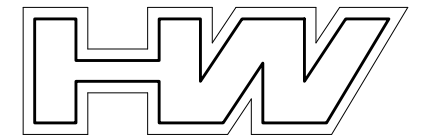


# HILFIKER MSE SQUARE PANEL WALL SYSTEM



## GENERAL NOTES

### DESIGN CRITERIA

1. THE ATTACHED DETAILS ARE BASED ON THE ASSUMPTIONS THAT THE MATERIAL WITHIN THE REINFORCED VOLUME, METHODS OF CONSTRUCTION AND QUALITY OF PREFABRICATED COMPONENTS MEET THE GOVERNING AGENCIES SPECIFICATION FOR MECHANICALLY STABILIZED EARTH STRUCTURES

2. MINIMUM DESIGN PARAMETERS

SEE WALL CONTROL DRAWINGS FOR SOIL CHARACTERISTICS OF FOUNDATION MATERIAL TO BE USED IN THE DESIGN OF THE WALL SYSTEM. THE CONTRACTOR SHALL PROVIDE SOIL DESIGN PARAMETERS FOR BACKFILL MATERIAL BASED ON THE ACTUAL SOIL CHARACTERISTICS UNITIZED AT THE SITE. THE VALUE OF THE INTERNAL FRICTION ANGLE, PHI, THE COHESION, C, AND THE UNIT WEIGHT, GAMMA, SHALL BE PROVIDED IN THE SHOP DRAWINGS.

#### EXTERNAL STABILITY

OVERTURNING  $\geq 2.0$   
SLIDING  $\geq 1.5$   
BEARING PRESSURE  $\geq 2.5$

OVERALL STABILITY  $\geq 1.5$

#### INTERNAL STABILITY

PULLOUT  $\geq 1.5$   
STEEL YIELD STRESS =  $0.47 F_y$

SERVICE LIFE = 75 YEARS

LIVE LOAD SURCHARGE = 250 PSF

3. THE MAXIMUM APPLIED BEARING PRESSURE AT THE INTERFACE OF THE FOUNDATION AND SELECT BACKFILL MATERIAL IS SHOWN ON THE PLANS. THE BEARING PRESSURE SHOWN IS THE MAXIMUM FOR THE GIVEN BASE MAT LENGTH. IT IS THE RESPONSIBILITY OF OTHERS TO DETERMINE THAT THE BEARING PRESSURE IS ALLOWABLE FOR THAT LOCATION.

4. ANY UNSUITABLE FOUNDATION MATERIAL BELOW THE REINFORCED VOLUME AS DETERMINED BY THE ENGINEER SHALL BE EXCAVATED AND REPLACED WITH SUITABLE MATERIAL AS DIRECTED BY THE ENGINEER.

5. THE DESIGN CONTAINED ON THESE DRAWINGS IS BASED ON INFORMATION PROVIDED BY OTHERS. ON THE BASIS OF THIS INFORMATION, T&B STRUCTURAL SYSTEMS IS RESPONSIBLE FOR THE INTERNAL STABILITY OF THE STRUCTURE. EXTERNAL STABILITY DESIGN INCLUDING FOUNDATION AND SLOPE STABILITY IS THE RESPONSIBILITY OF OTHERS.

### WALL CONSTRUCTION

1. WALLS FOUNDED ON CURVES SHALL HAVE THEIR PANELS DIMENSIONED AS A SERIES OF CORDS (AS DIMENSIONED IN SHOP DRAWINGS) IN ORDER TO MATCH THE REQUIRED WALL RADIUS.

2. FOR LOCATION AND ALIGNMENT OF THE MSE STRUCTURES REFERENCE THE RETAINING WALL CONTROL PLANS.

3. IF MANHOLE AND DROP INLETS ARE REQUIRED, THEY SHALL BE LOCATED AS SHOWN ON THE RETAINING WALL ELEVATION DRAWINGS.

4. IF PILES ARE LOCATED WITHIN THE REINFORCED VOLUME THEY SHALL BE DRIVEN PRIOR TO CONSTRUCTION OF THE WALL UNLESS AN ALTERNATE METHOD IS USED TO ISOLATE THE COLUMNS FROM THE REINFORCED VOLUME AS APPROVED BY THE ENGINEER.

5. BACKFILL MATERIAL SHALL BE COMPACTED IN ACCORDANCE WITH SECTION 548 TO A LEVEL 2" (PLUS OR MINUS) ABOVE THE ELEVATION OF THE SOIL REINFORCING ELEMENT. NO SOIL REINFORCEMENT SHALL BE ATTACHED TO ANY PANEL BEFORE THE BACKFILL IS PLACED AT THE REQUIRED ELEVATION AND IS COMPACTED.

6. STRUCTURES GREATER THAN 20 FEET SHALL HAVE THE FINISHED GRADE PLACED AND COMPACTED AT THE FRONT FACE OF THE STRUCTURE BEFORE THE STRUCTURE HEIGHT EXCEEDS 20 FEET. FINISH GRADE SHALL BE COMPACTED TO 95 % OF AASHTO T-180 UNLESS OTHERWISE DIRECTED BY THE ENGINEER.

7. IT IS THE RESPONSIBILITY OF THE CONTRACTOR TO LOCATE ANY GUARDRAIL POSTS PRIOR TO PLACING THE TOP ROW OF SOIL REINFORCEMENT. THE POST SPACING SHALL BE ADJUSTED TO AVOID CONFLICTS WITH THE LONGITUDINAL SOIL REINFORCING WIRE. CUTTING OF THE LONGITUDINAL WIRE SHALL BE ALLOWED ONLY AS DIRECTED BY THE ENGINEER.

8. IF EXISTING OR FUTURE STRUCTURES ARE TO BE PLACED IN THE REINFORCED VOLUME THAT INTERFERE WITH THE PROPER PLACEMENT OF THE SOIL REINFORCEMENT THE CONTRACTOR SHALL NOTIFY THE ENGINEER IMMEDIATELY FOR A COURSE OF ACTION.

9. TOP COPING PANELS BENEATH CAST-IN-PLACE COPING SHALL HAVE 1/2" DOWELS PROTRUDING FROM THEIR TOP EDGE.

10. FOR OTHER INFORMATION PERTAINING TO THE CONSTRUCTION OF THE HILFIKER RETAINING WALL PLEASE REFER TO T&B STRUCTURAL SYSTEMS ERECTION MANUAL.

11. IT IS THE RESPONSIBILITY OF THE CONTRACTOR TO DEFLECT THE TOP ROW OF SOIL REINFORCEMENT DOWNWARD SO AS TO NOT CONFLICT WITH ROADWAY MIXING OPERATIONS AND/OR ROADWAY CONSTRUCTION OPERATIONS. ANY SOIL REINFORCING MATERIAL THAT IS DAMAGED SHALL BE REPLACED AT THE CONTRACTORS EXPENSE.

### MISCELLANEOUS NOTES

1. NOMINAL SOIL REINFORCING GRID LENGTH

THE WELDED WIRE MESH IS MANUFACTURED IN LENGTHS CORRESPONDING TO THE DIMENSION "B" AS GIVEN IN THE RETAINING WALL ELEVATIONS. THE ACTUAL LENGTH FROM THE FRONT FACE OF THE PANEL TO THE TAIL OF THE SOIL REINFORCING GRID IS PLUS 12" THIS ACCOUNTS FOR THE THICKNESS OF THE PANEL AND THE LOCATION OF THE CONNECTION OF THE SOIL REINFORCING MAT WITH THE PANEL ANCHOR. THE FOUNDATION SHALL BE EXCAVATED TO AN EXTENT OF "B" PLUS 12".

2. SELECT BACKFILL QUANTITY

THE REQUIRED VOLUME OF IN-PLACE SELECT BACKFILL IS CALCULATED BY MULTIPLYING THE RETAINING WALL FACE AREA BY THE SOIL REINFORCING LENGTH. THIS IS PERFORMED AT EACH INDIVIDUAL SEGMENT OF WALL FOR EACH CORRESPONDING "B". THE BACKFILL QUANTITY IF GIVEN BY T&B STRUCTURAL SYSTEMS IS AN ESTIMATE ONLY. THE CONTRACTOR IS ULTIMATELY TO DETERMINE THE QUANTITY OF SELECT BACKFILL MATERIAL THAT IS REQUIRED.

3. PANEL FINISH

THE CONCRETE PANELS SHALL HAVE A PLAIN STEEL FORM FINISH UNLESS OTHERWISE SPECIFIED ON THE RETAINING WALL CONTROL PLANS.

4. THE FOLLOWING MATERIALS ARE SUPPLIED BY T&B STRUCTURAL SYSTEMS

- PRECAST CONCRETE FACING PANEL
- SOIL REINFORCING GRIDS
- CONNECTION PINS
- 1/2" DIAMETER ALIGNMENT PINS
- 60 DURO 3/4" X 8" BEARING PADS
- SYNTHETIC INDUSTRIES GEOTEX 401NONWOVEN GEOTEXTILE FILTER FABRIC

\*\*THIS SYSTEM FOR USE IN MODERATELY OR SLIGHT AGGRESSIVE ENVIRONMENTS ONLY\*\*

ANY OTHER MATERIAL REQUIRED TO BUILD THE MSE STRUCTURES ACCORDING TO THE GOVERNING SPECIFICATION SHALL BE SUPPLIED BY THE CONTRACTOR.

5. T&B STRUCTURAL SYSTEM SUPPLIES MECHANICALLY STABILIZED EARTH STRUCTURAL COMPONENTS FOR USE WITH THE HILFIKER RETAINING WALL SYSTEMS FOR THE STRUCTURES DETAILED HEREIN. THE ERECTION MANUAL PROVIDED BY T&B STRUCTURAL SYSTEMS IS A GENERAL GUIDELINE FOR ERECTING THE HILFIKER RETAINING WALL SYSTEM. ALL QUALITY CONTROL PROCEDURES, STAGING PROCEDURES, MATERIAL HANDLING, AND SAFETY IS THE RESPONSIBILITY OF THE CONTRACTOR. THIS DOES NOT RELIEVE THE CONTRACTOR OF THE OBLIGATION TO CONSTRUCT THE RETAINING WALL ACCORDING TO THE PROJECT PLANS AND SPECIFICATIONS AND ALL LAWS OF THE GOVERNING STATE.

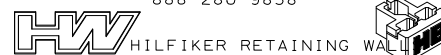
# ENGLISH

HILFIKER PRODUCTS ARE COVERED BY UNITED STATES AND FOREIGN PATENTS AND PATENTS PENDING. MATERIAL CONTAINED HERE WITHIN IS PROPRIETARY PROPERTY OF T&B STRUCTURAL SYSTEMS AND MAY NOT BE REPRODUCED OR TRANSMITTED. US PATENTS 4,260,296/4,324,508/4,343,572/4,616,959/4,661,023/4,929,125/4,993,879/4,329,089/4,117,686/4,505,621/5,484,235/5,702,208/5,722,799/0.P.

THE DESIGN CONTAINED IN THIS DRAWING IS BASED ON INFORMATION SUPPLIED BY THE FDOT CONSULTANT. TBSS IS CERTIFYING THE INTERNAL STABILITY OF THE MSE MASS ONLY. ALL EXTERNAL STABILITY REQUIREMENTS ARE THE RESPONSIBILITY OF THE OWNER.

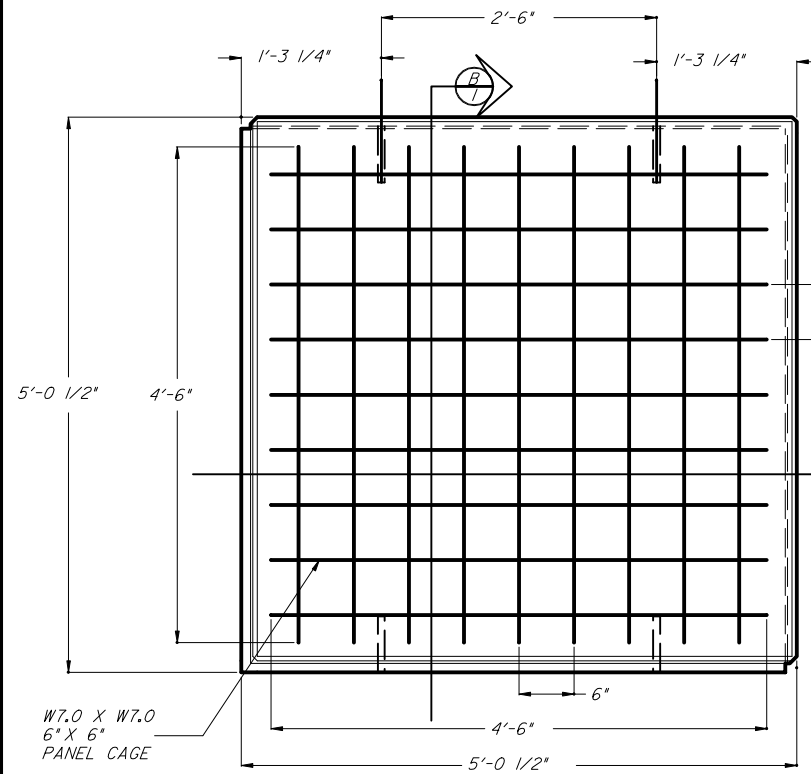
### T&B STRUCTURAL SYSTEMS INC.

ENGINEERED STRUCTURES  
637 WEST HURST BLVD.  
HURST, TEXAS 76053  
888-280-9858

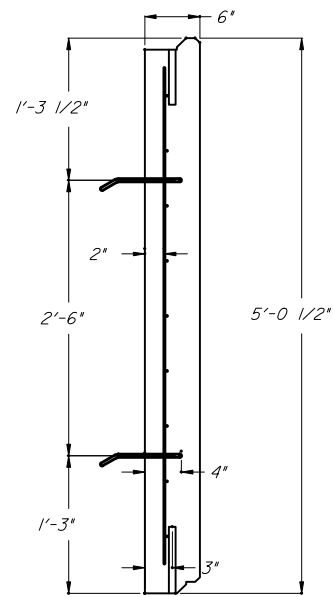


STATE OF FLORIDA DEPARTMENT OF TRANSPORTATION				
RETAINING WALL SYSTEM HILFIKER SQUARE PANEL				
Names	Dates	Approved By <i>W. J. [Signature]</i>		
Designed By		State Structures Design Engineer		
Drawn By	TPT	Revision	Sheet No.	Index No.
Checked By	TBW	00	1 of 13	5021

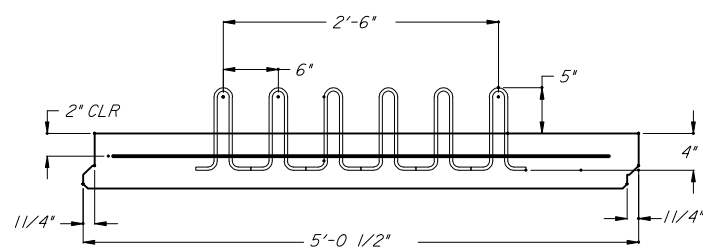
\*\*\*\*\*DGNSPECIFICATION\*\*\*\*\*  
\*\*\*\*\*SYTIME\*\*\*\*\*



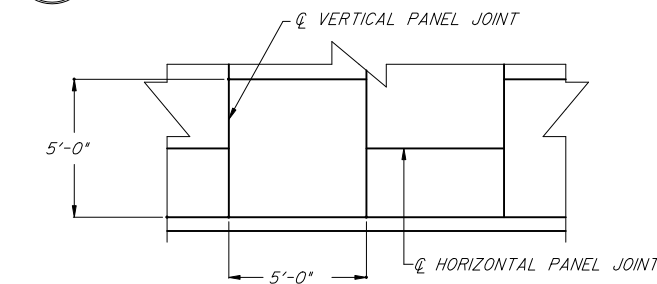
**A** STANDARD SQUARE PANEL  
TYPE G - FRONT FACE



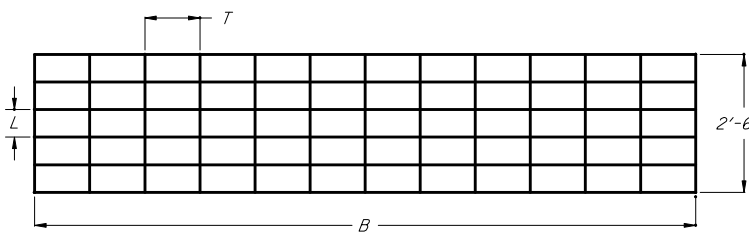
**B** STANDARD SQUARE PANEL  
TYPE G SECTION



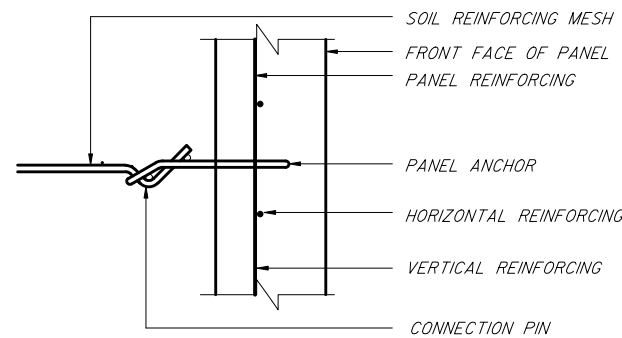
**E** STANDARD SQUARE PANEL  
TYPE B/G



**F** TYPICAL PANEL LAYOUT  
PARTIAL ELEVATION - FRONT FACE

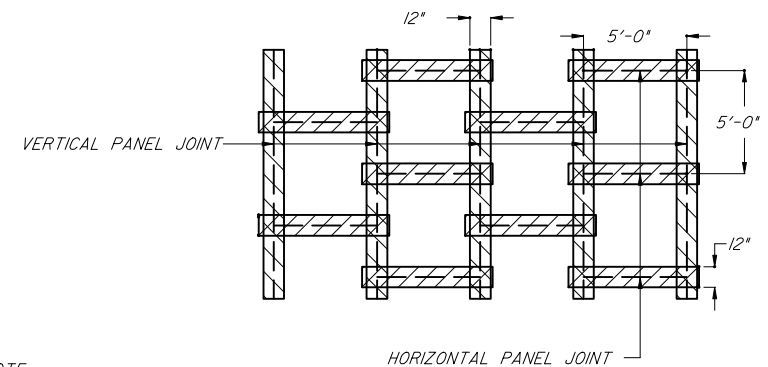


**G** SOIL REINFORCING ELEMENT  
MW45 MINIMUM WIRE SIZE



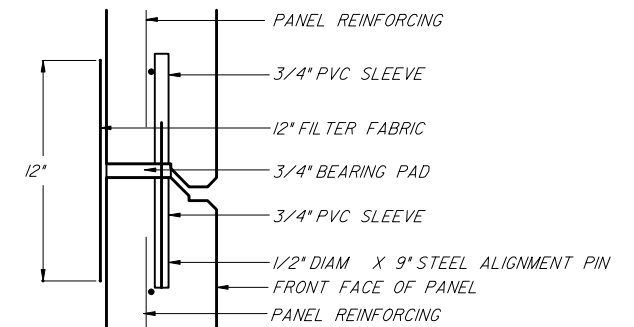
NOTE: ANCHOR SIZE SHALL BE MINIMUM SIZE OF ATTACHED SOIL REINFORCING

**H** CONNECTION DETAIL - TYP

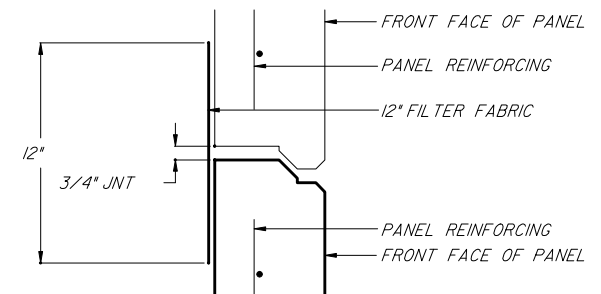


NOTE:  
1. FILTER FABRIC SHALL BE PLACED OVER ALL VERTICAL AND HORIZONTAL JOINTS  
2. FABRIC SHALL BE ADHERED TO BACK FACE OF PANEL WITH THE USE OF AN APPROVED CONSTRUCTION ADHESIVE  
3. MINIMUM OVER LAP OF 12\"/>

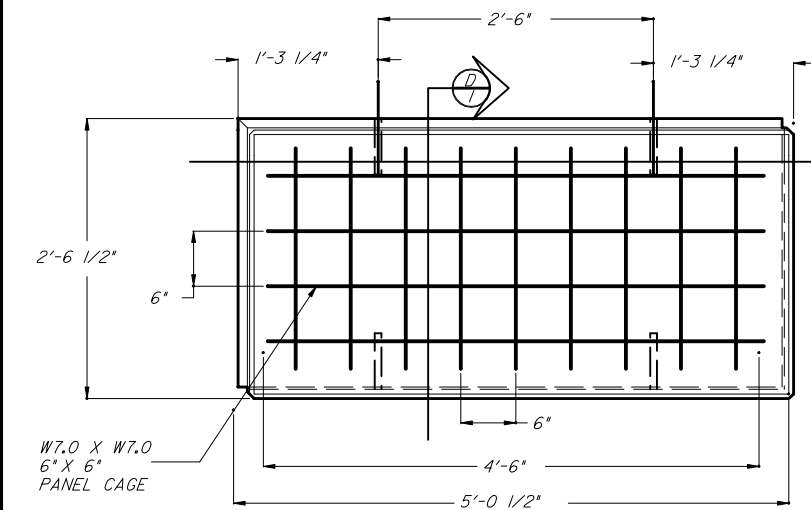
**J** FILTER CLOTH - JOINT DETAIL  
PARTIAL ELEVATION - BACK FACE



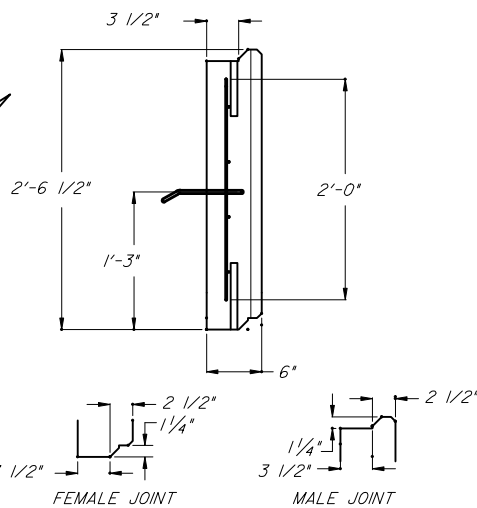
**K** HORIZONTAL JOINT DETAIL  
PARTIAL SECTION



**L** VERTICAL JOINT DETAIL  
PARTIAL SECTION



**C** STANDARD HALF PANEL  
TYPE B - FRONT FACE



**D** STANDARD HALF PANEL  
TYPE B SECTION

HILFIKER PRODUCTS ARE COVERED BY UNITED STATES AND FOREIGN PATENTS AND PATENTS PENDING. MATERIAL CONTAINED HERE WITHIN IS PROPRIETARY PROPERTY OF T&B STRUCTURAL SYSTEMS AND MAY NOT BE REPRODUCED OR TRANSMITTED. US PATENTS 4,260,296/4,324,508/4,343,572/4,616,959/4,661,023/4,929,125/4,983,879/4,329,089/4,117,686/4,505,621/5,484,235/5,702,208/5,722,799/0.P.

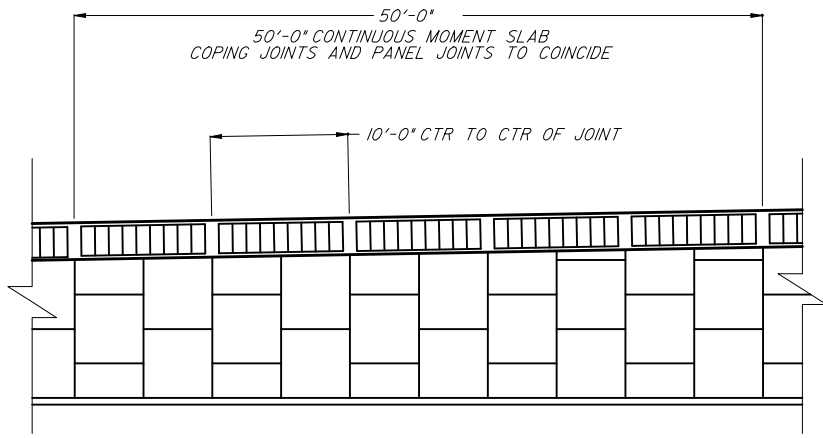
THE DESIGN CONTAINED IN THIS DRAWING IS BASED ON INFORMATION SUPPLIED BY THE FOOT CONSULTANT. TBSS IS CERTIFYING THE INTERNAL STABILITY OF THE MSE MASS ONLY. ALL EXTERNAL STABILITY REQUIREMENTS ARE THE RESPONSIBILITY OF THE OWNER.

T&B STRUCTURAL SYSTEMS INC.  
ENGINEERED STRUCTURES  
637 WEST HURST BLVD.  
HURST, TEXAS 76053  
888-280-9858

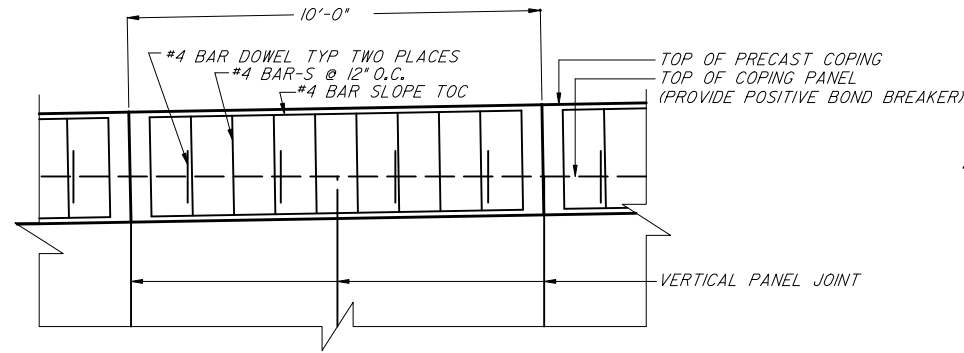


STATE OF FLORIDA DEPARTMENT OF TRANSPORTATION				
RETAINING WALL SYSTEM HILFIKER SQUARE PANEL				
Names	Dates	Approved By		
Designed By		W. J. [Signature]		
Drawn By	TPT	State Structures Design Engineer		
Checked By	TBM	Revision	Sheet No.	Index No.
		00	2 of 13	5021

\*\*\*\*\*DGN SPECIFICATION\*\*\*\*\*  
\*\*\*\*\*SYTIME\*\*\*\*\*

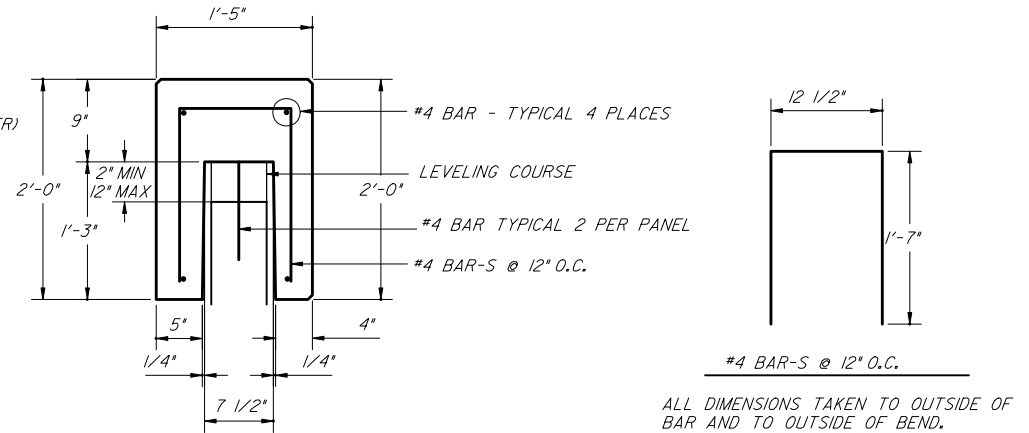


**A** PRECAST COPING ELEVATION  
2

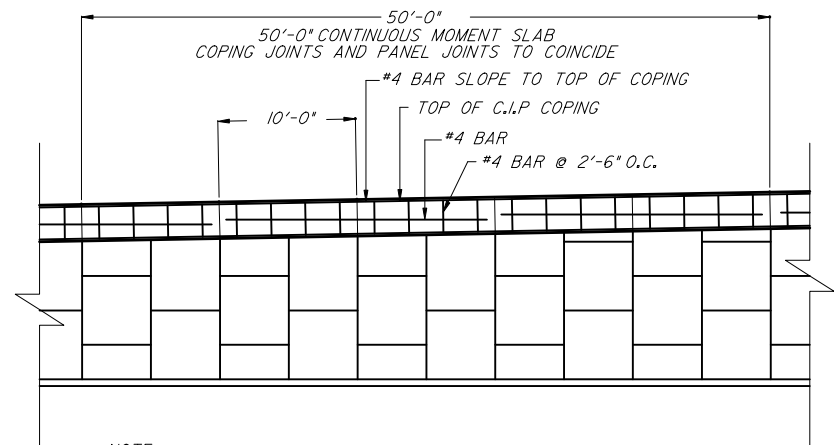


NOTE: PLACE PRE-CAST COPING SO JOINTS LINE UP WITH COPING PANEL BELOW. USE GROUT TO BRING TOP COPING PANEL TO GRADE.

**B** PRECAST COPING PARTIAL ELEVATION  
2

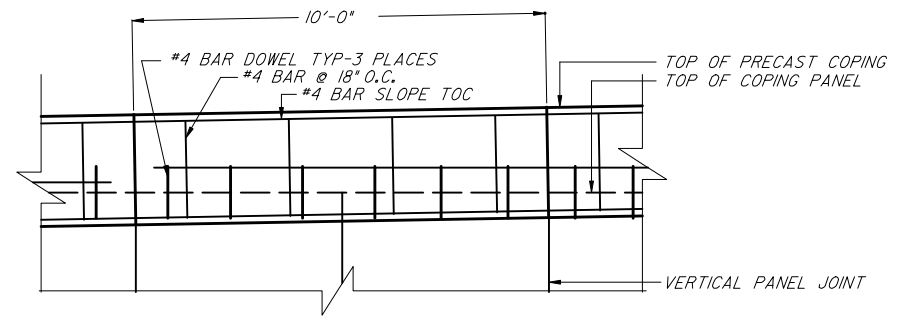


**C** PRECAST COPING  
2



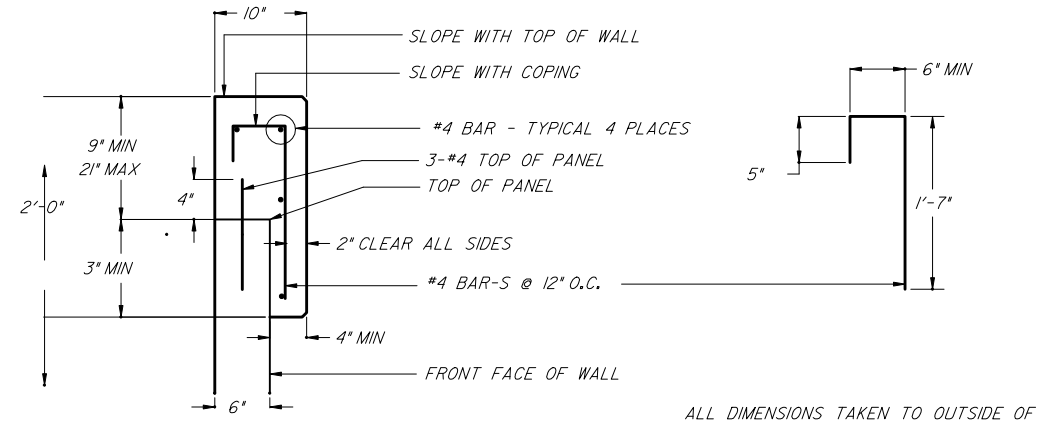
NOTE: JOINTS TO BE 10' O.C. AND SHALL LINE UP WITH THE PANEL JOINT BELOW

**D** C.I.P. COPING ELEVATION  
2



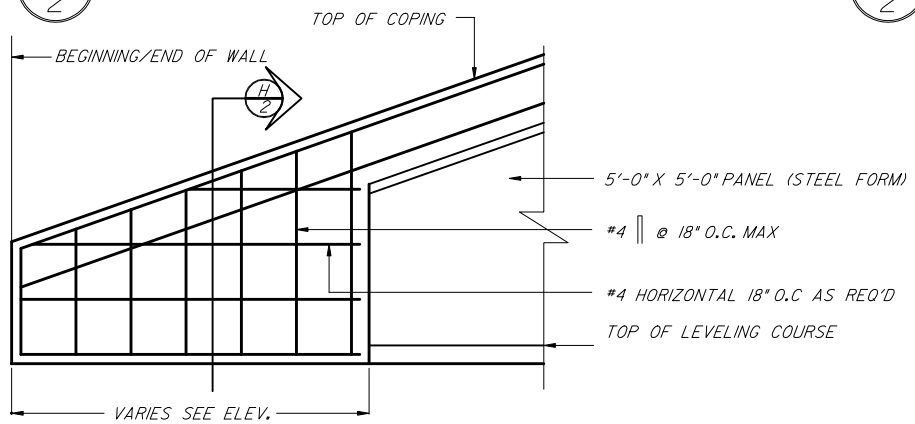
NOTE: PLACE PRE-CAST COPING SO JOINTS LINE UP WITH COPING PANEL BELOW. USE GROUT TO BRING TOP COPING PANEL TO GRADE.

**E** C.I.P. COPING PARTIAL ELEVATION  
2

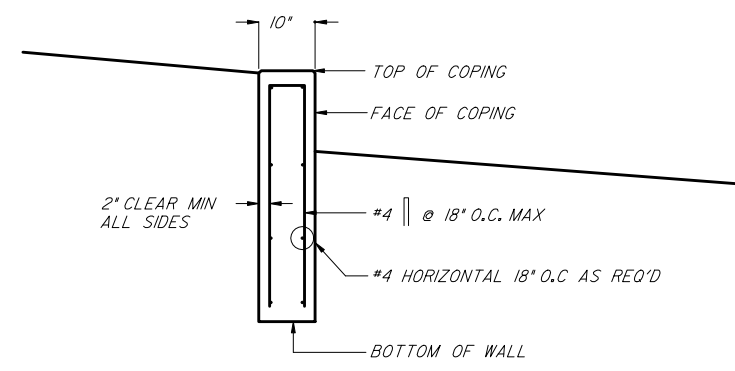


ALL DIMENSIONS AS SHOWN ARE MINIMUMS

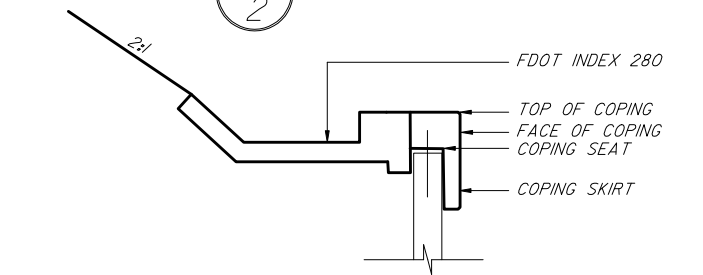
**F** C.I.P. COPING  
2



**G** COPING ENCLOSURE ELEVATION  
2



**H** COPING ENCLOSURE SECTION  
2

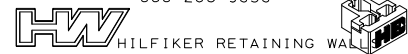


**I** COPING-DRAINAGE SECTION DETAIL  
2

HILFIKER PRODUCTS ARE COVERED BY UNITED STATES AND FOREIGN PATENTS AND PATENTS PENDING. MATERIAL CONTAINED HERE WITHIN IS PROPRIETARY PROPERTY OF T&B STRUCTURAL SYSTEMS AND MAY NOT BE REPRODUCED OR TRANSMITTED. US PATENTS: 4,960,296/4,324,508/4,343,572/4,616,959/4,661,023/4,929,125/4,993,879/4,329,089/4,117,686/4,505,621/5,484,235/5,702,208/5,722,799/O.P.

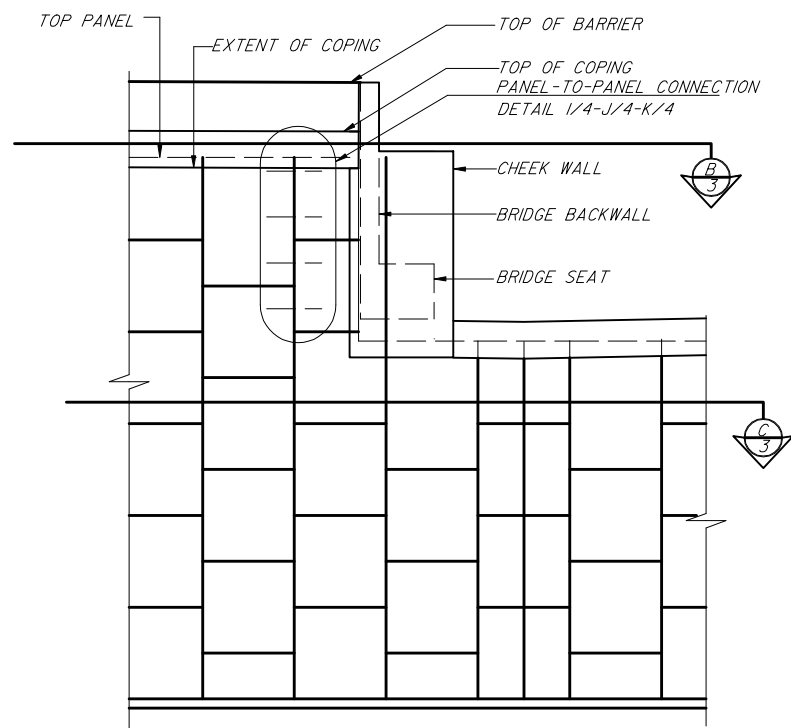
THE DESIGN CONTAINED IN THIS DRAWING IS BASED ON INFORMATION SUPPLIED BY THE FDOT CONSULTANT. TBSS IS CERTIFYING THE INTERNAL STABILITY OF THE MSE MASS ONLY. ALL EXTERNAL STABILITY REQUIREMENTS ARE THE RESPONSIBILITY OF THE OWNER.

T&B STRUCTURAL SYSTEMS INC.  
ENGINEERED STRUCTURES  
637 WEST HURST BLVD.  
HURST, TEXAS 76053  
888-280-9858

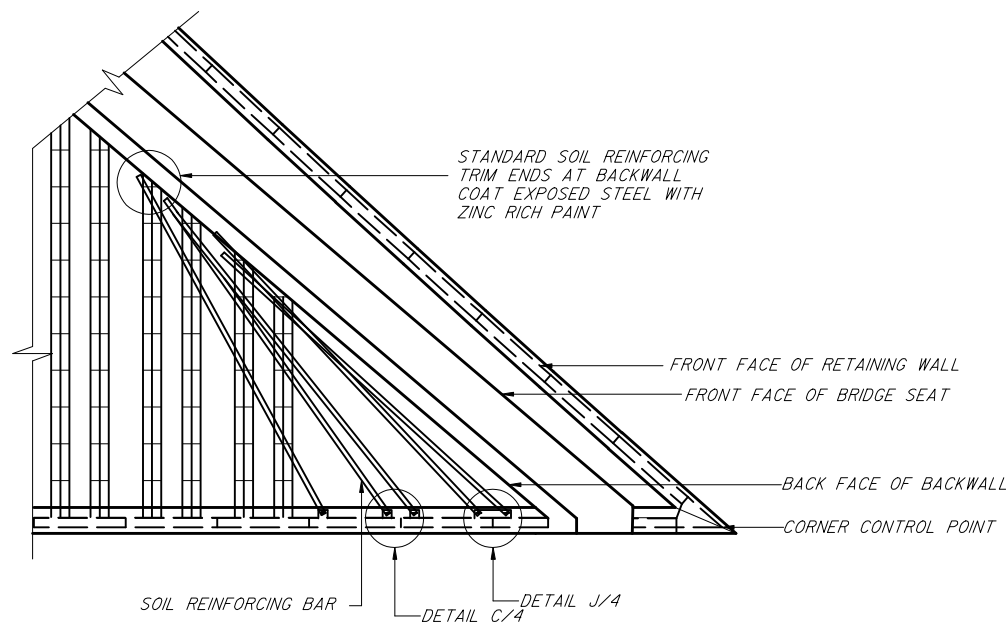


STATE OF FLORIDA DEPARTMENT OF TRANSPORTATION				
<b>RETAINING WALL SYSTEM HILFIKER SQUARE PANEL</b>				
Designed By	Names	Dates	Approved By <i>W. V. [Signature]</i>	
Drawn By	TPT		Revision	Sheet No. 3 of 13
Checked By	TBW		00	Index No. 5021

\*\*\*\*\*DGNSPECIFICATION\*\*\*\*\*  
\*\*\*\*\*SYTIME\*\*\*\*\*

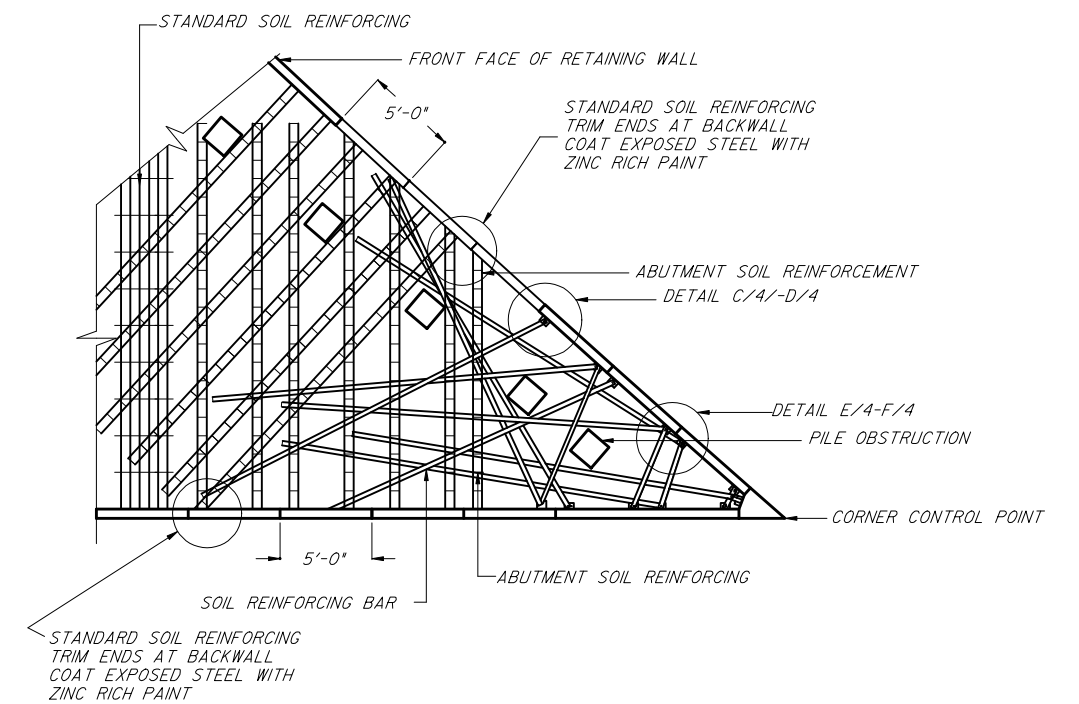


**A** ELEVATION ACUTE CORNER



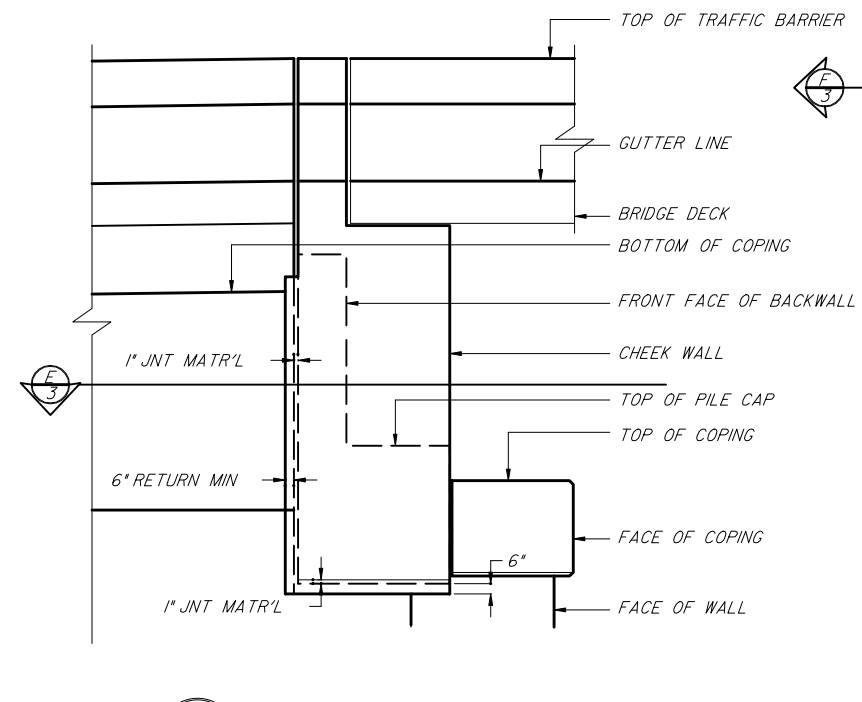
ABUTMENT RETAINING WALL SOIL REINFORCEMENT NOT SHOWN FOR CLARITY  
END BENT BACK WALL REINFORCING NOT SHOWN FOR CLARITY

**B** ACUTE CORNER PLAN SECTION

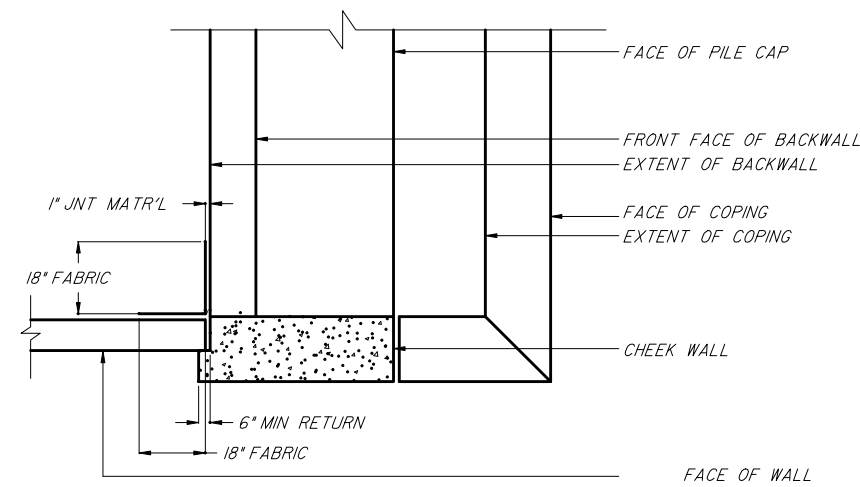


NOTE: REFERENCE DETAIL G/5 FOR ABUTMENT SOIL REINFORCEMENT SHOWN

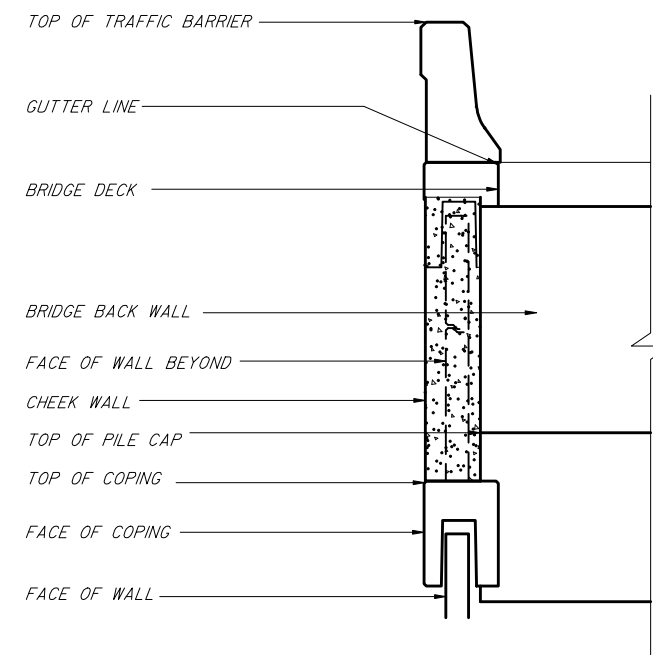
**C** ACUTE CORNER PLAN SECTION



**D** ELEVATION AT CHEEK WALL



**E** PLAN SECTION AT CHEEK WALL

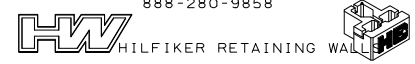


**F** SECTION AT CHEEK WALL

HILFIKER PRODUCTS ARE COVERED BY UNITED STATES AND FOREIGN PATENTS AND PATENTS PENDING. MATERIAL CONTAINED HERE WITHIN IS PROPRIETARY PROPERTY OF T&B STRUCTURAL SYSTEMS AND MAY NOT BE REPRODUCED OR TRANSMITTED. US PATENTS 4,260,286/4,324,508/4,343,572/4,616,959/4,661,023/4,929,125/4,993,879/4,329,089/4,117,686/4,505,621/5,484,235/5,702,208/5,722,799/O.P.

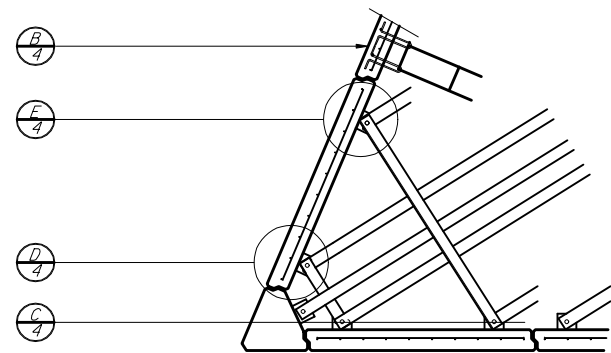
THE DESIGN CONTAINED IN THIS DRAWING IS BASED ON INFORMATION SUPPLIED BY THE FOOT CONSULTANT. TBSS IS CERTIFYING THE INTERNAL STABILITY OF THE MSE MASS ONLY. ALL EXTERNAL STABILITY REQUIREMENTS ARE THE RESPONSIBILITY OF THE OWNER.

T&B STRUCTURAL SYSTEMS INC.  
ENGINEERED STRUCTURES  
637 WEST HURST BLVD.  
HURST, TEXAS 76053  
888-280-9858

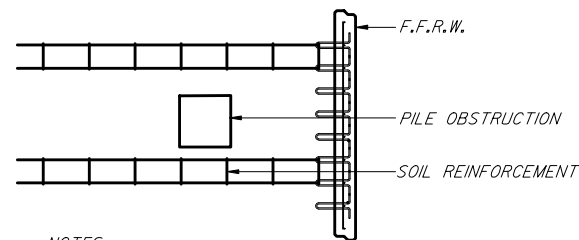


STATE OF FLORIDA DEPARTMENT OF TRANSPORTATION				
<b>RETAINING WALL SYSTEM HILFIKER SQUARE PANEL</b>				
Designed By	Names	Dates	Approved By <i>W. J. [Signature]</i>	
Drawn By	TPT		Revision	Sheet No. 4 of 13
Checked By	TBW		00	Index No. 5021

\*\*\*\*\*DGNSPECIFICATION\*\*\*\*\*  
\*\*\*\*\*SYTIME\*\*\*\*\*

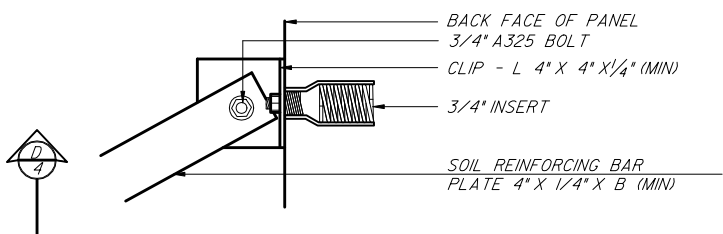


**A ACUTE CORNER DETAIL**  
4 ALL STEEL TO BE HOT DIP GALVANIZED U.N.O.

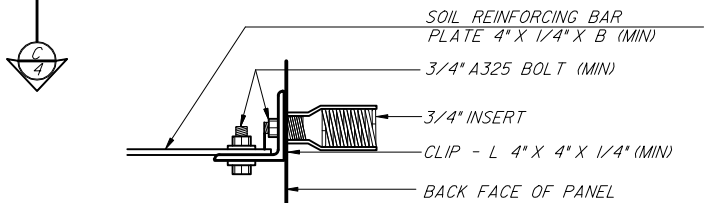


NOTES:  
1. SPACE SOIL REINFORCEMENT SO AS TO MISS OBSTRUCTION

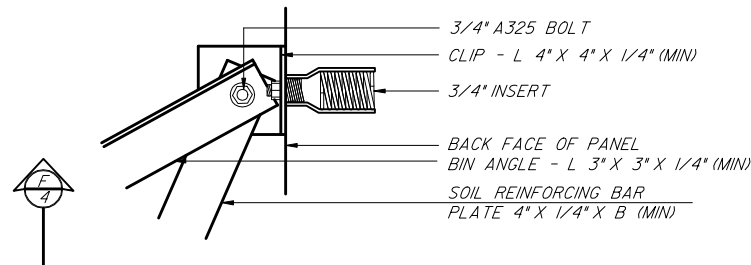
**B CONTINUOUS ANCHOR PLAN**  
4 ALL STEEL TO BE HOT DIP GALVANIZED U.N.O.



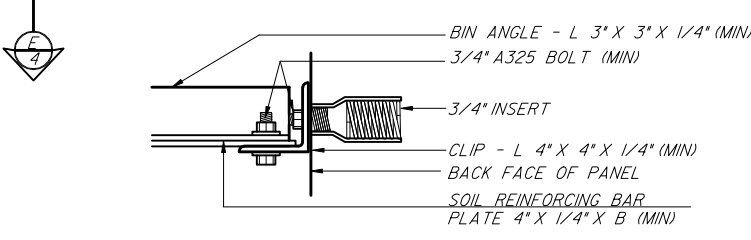
**C SOIL REINFORCING BAR PLAN**  
4



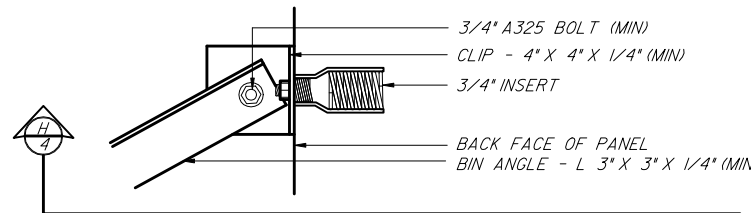
**D SOIL REINFORCING BAR DETAIL**  
4 ALL STEEL TO BE HOT DIP GALVANIZED U.N.O.



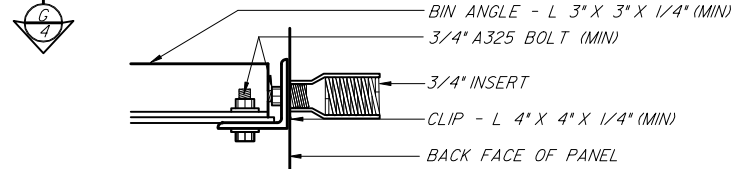
**E COMBINATION ANGLE/BAR PLAN**  
4 ALL STEEL TO BE HOT DIP GALVANIZED U.N.O.



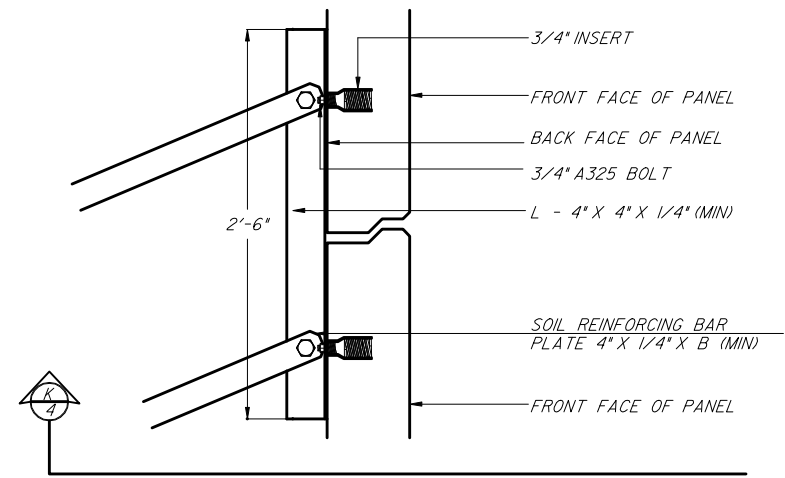
**F COMBINATION STRAP/BAR DETAIL**  
4 ALL STEEL TO BE HOT DIP GALVANIZED U.N.O.



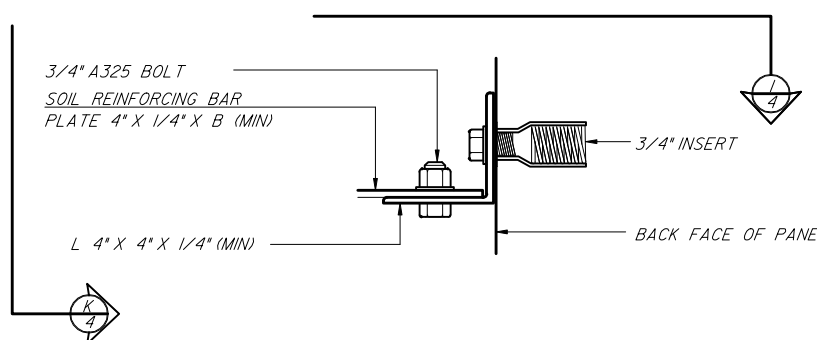
**G BIN CLIP PLAN DETAIL**  
4 ALL STEEL TO BE HOT DIP GALVANIZED U.N.O.



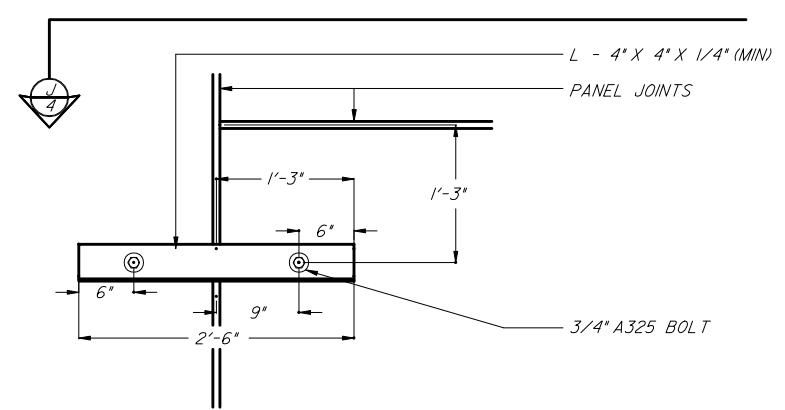
**H BIN CLIP SECTION DETAIL**  
4 ALL STEEL TO BE HOT DIP GALVANIZED U.N.O.



**I PANEL-TO-PANEL CONNECTION PLAN**  
4 ALL STEEL TO BE HOT DIP GALVANIZED U.N.O.



**J PANEL-TO-PANEL CONNECTION SECTION**  
4 ALL STEEL TO BE HOT DIP GALVANIZED U.N.O.

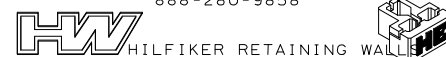


**K PANEL-TO-PANEL CONNECTION ELEVATION**  
4 ALL STEEL TO BE HOT DIP GALVANIZED U.N.O.

HILFIKER PRODUCTS ARE COVERED BY UNITED STATES AND FOREIGN PATENTS AND PATENTS PENDING. MATERIAL CONTAINED HERE WITHIN IS PROPRIETARY PROPERTY OF T&B STRUCTURAL SYSTEMS AND MAY NOT BE REPRODUCED OR TRANSMITTED.  
US PATENTS 4,260,296/4,324,508/4,343,572/4,616,959/4,661,023/4,929,125/4,993,879/4,329,089/4,117,686/4,505,621/5,484,235/5,702,208/5,722,799/0.P.

THE DESIGN CONTAINED IN THIS DRAWING IS BASED ON INFORMATION SUPPLIED BY THE FOOT CONSULTANT. T&B IS CERTIFYING THE INTERNAL STABILITY OF THE MSE MASS ONLY. ALL EXTERNAL STABILITY REQUIREMENTS ARE THE RESPONSIBILITY OF THE OWNER.

T&B STRUCTURAL SYSTEMS INC.  
ENGINEERED STRUCTURES  
637 WEST HURST BLVD.  
HURST, TEXAS 76053  
888-280-9858

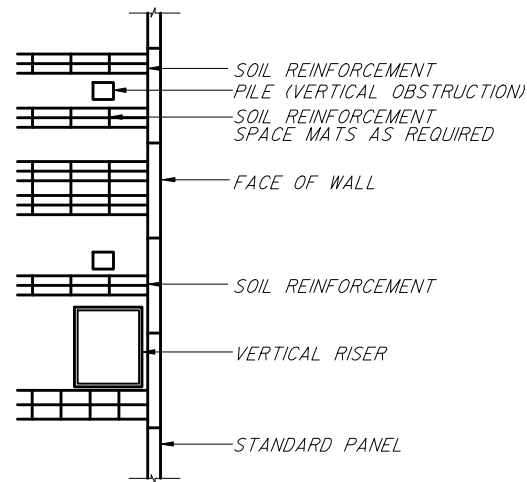


STATE OF FLORIDA DEPARTMENT OF TRANSPORTATION

RETAINING WALL SYSTEM  
HILFIKER SQUARE PANEL

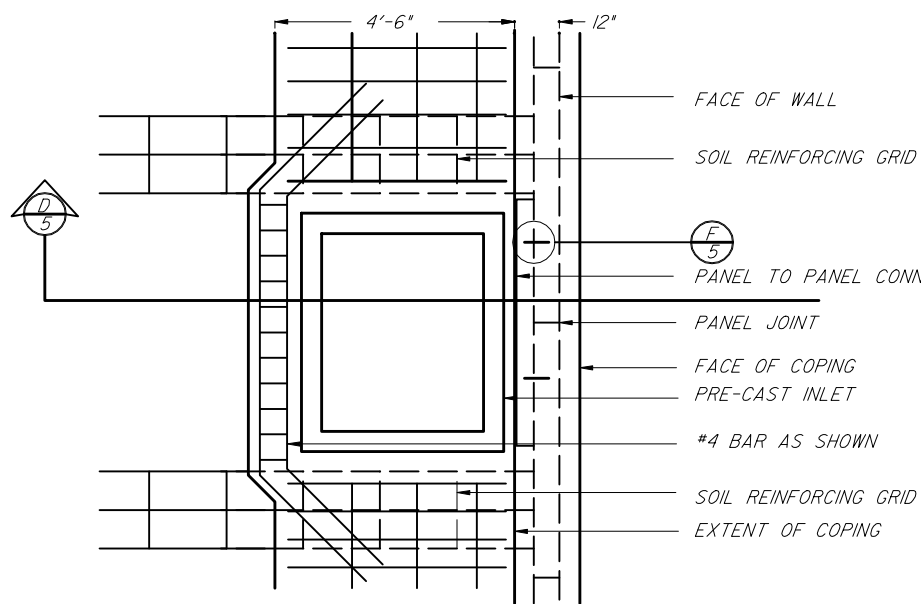
Names	Dates	Approved By			
Designed By		 State Structures Design Engineer			
Drawn By	TPT				
Checked By	TBW				
Revision	00				Sheet No.

\*\*\*\*\*DGN SPECIFICATION\*\*\*\*\*  
\*\*\*\*\*SYTIME\*\*\*\*\*



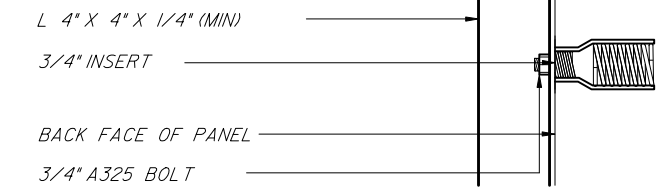
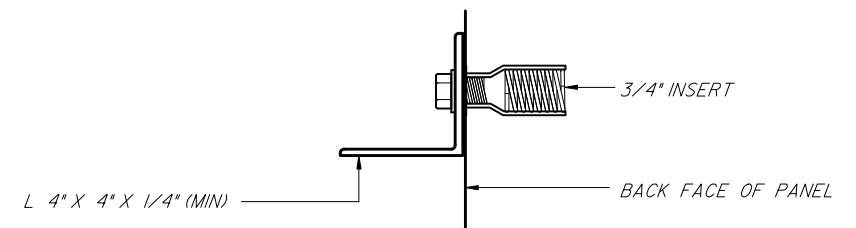
- NOTE:
1. VERTICAL OBSTRUCTIONS REQUIRE SPECIAL DESIGN CONSIDERATIONS
  2. THE DETAIL AS SHOWN IS FOR CONCEPT ONLY AND MAY VARY ON FINAL DESIGN
  3. REFERENCE SPECIAL DESIGN CALCULATIONS FOR DETAILS AND COMPONENT TYPE AND SIZE
  4. OBSTRUCTION SHALL BE INSTALLED BEFORE WALL

**A** VERTICAL OBSTRUCTION  
5

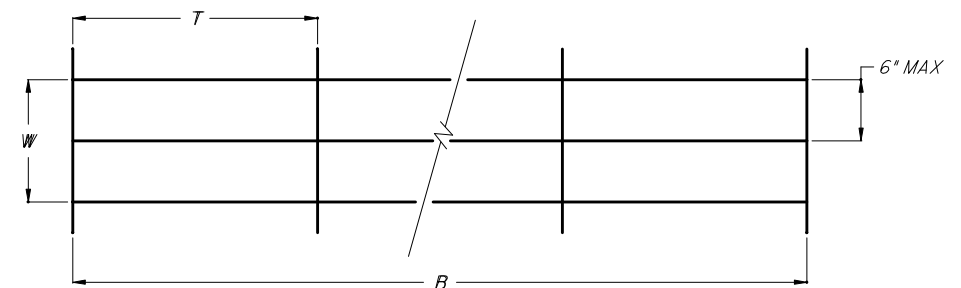


**C** VERTICAL OBSTRUCTION  
5

**E** PANEL-TO-PANEL CONNECTION DETAIL  
5 SECTION



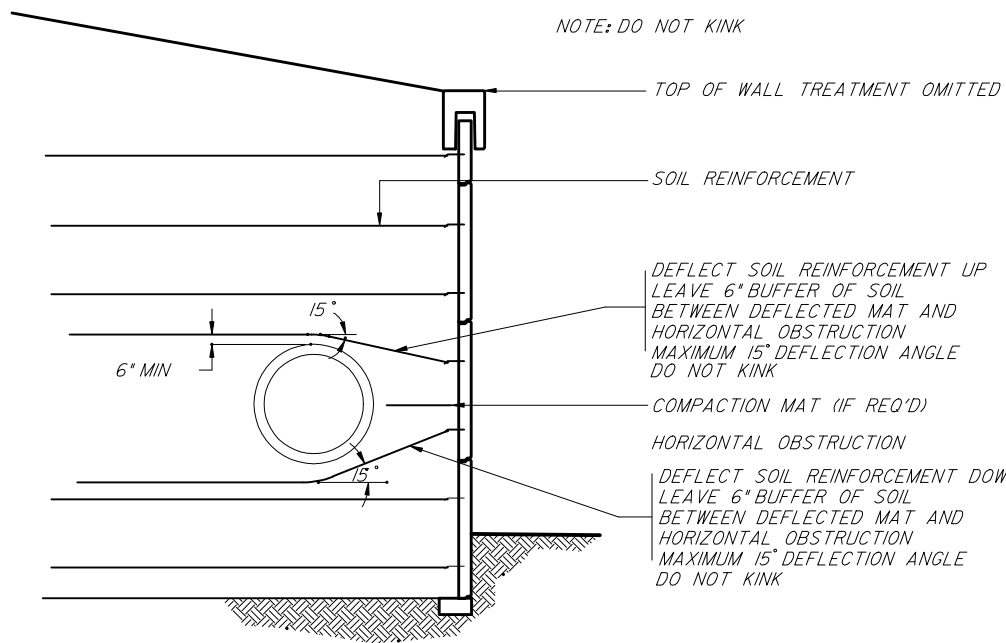
**F** PANEL-TO-PANEL CONNECTION DETAIL  
5 PLAN



B = SOIL REINFORCING LENGTH  
T = TRANSVERSE WIRE SPACING (2'-0" MAX)  
W = WIDTH OF SOIL REINFORCING ELEMENT

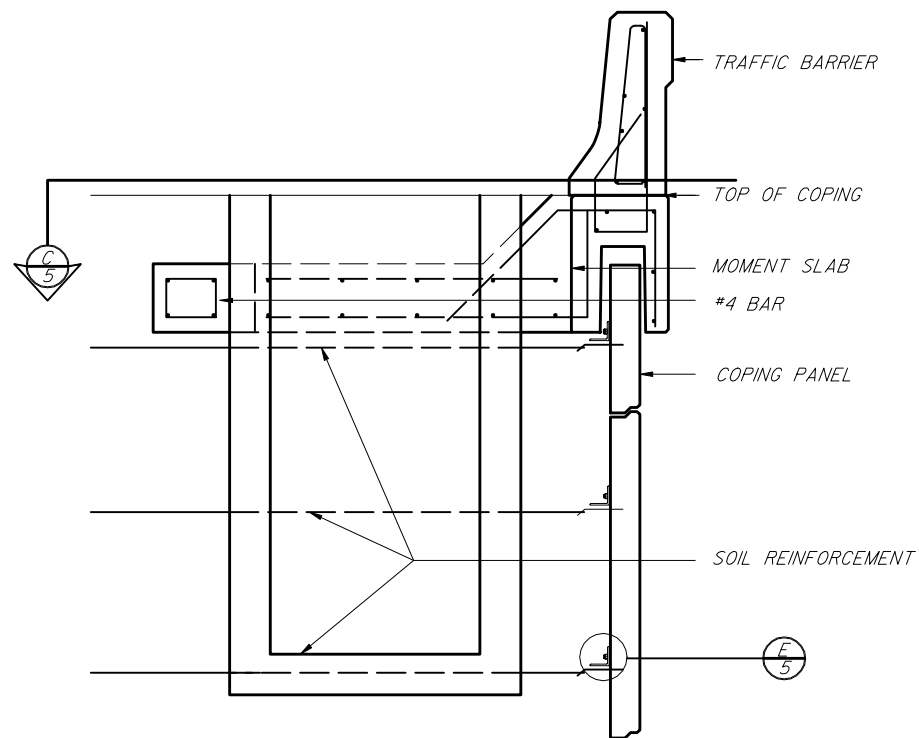
NOTE: THE MAT SHOWN IS USED TO PASS OBSTRUCTIONS AND TYPICALLY IS A WELDED WIRE MESH WITH LARGE DIAMETER WIRES. THE LONGITUDINAL WIRE SHALL BE EQUAL TO OR SMALLER THAN THE PANEL ANCHOR. A MINIMUM OF THREE LONGITUDINAL WIRES IS REQUIRED. THE MINIMUM WIRE SIZE SHALL BE AN W7.0

**G** OBSTRUCTION SOIL REINFORCING PLAN  
5 PLAN



- NOTE:
1. HORIZONTAL OBSTRUCTIONS REQUIRE SPECIAL DESIGN CONSIDERATIONS
  2. THE DETAIL AS SHOWN IS FOR CONCEPT ONLY AND MAY VARY ON FINAL DESIGN
  3. REFERENCE SPECIAL DESIGN CALCULATIONS FOR DETAILS AND COMPONENT TYPE AND SIZE

**B** HORIZONTAL OBSTRUCTION  
5



**D** PANEL-TO-PANEL CONNECTION DETAIL  
5

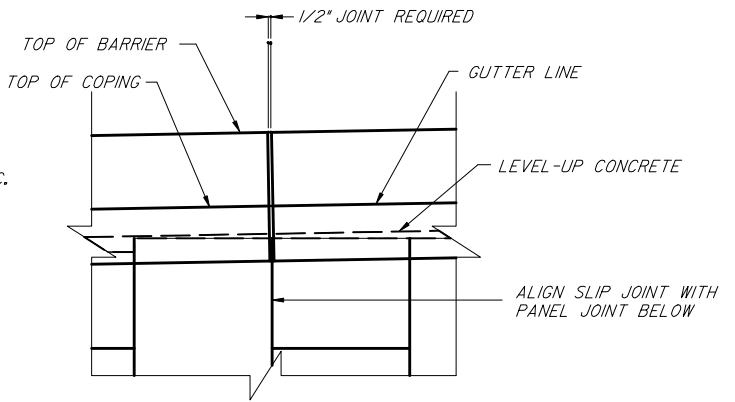
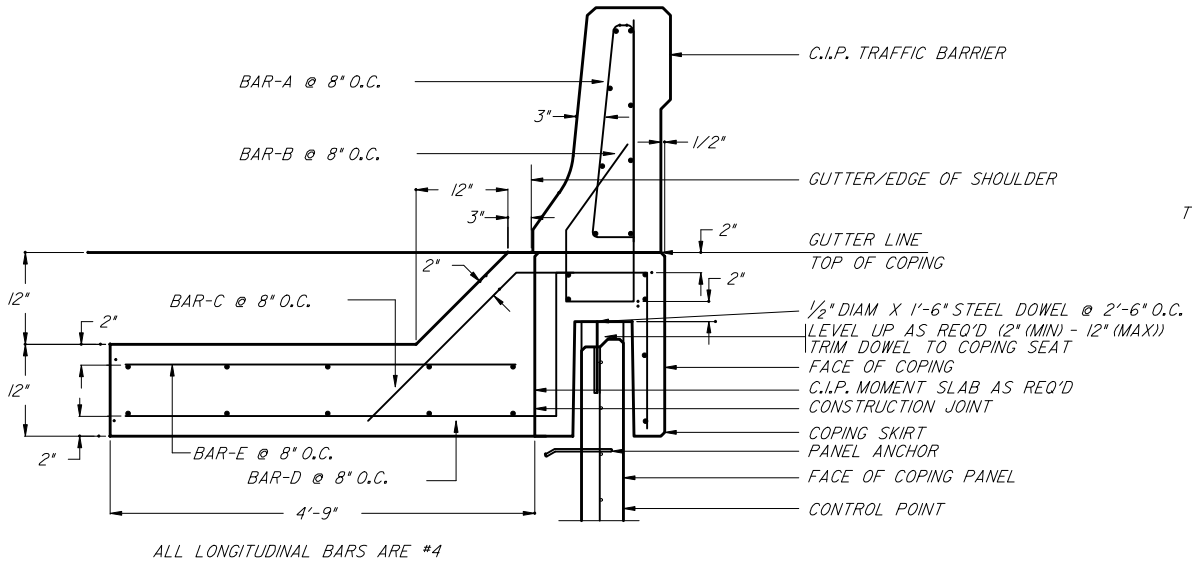
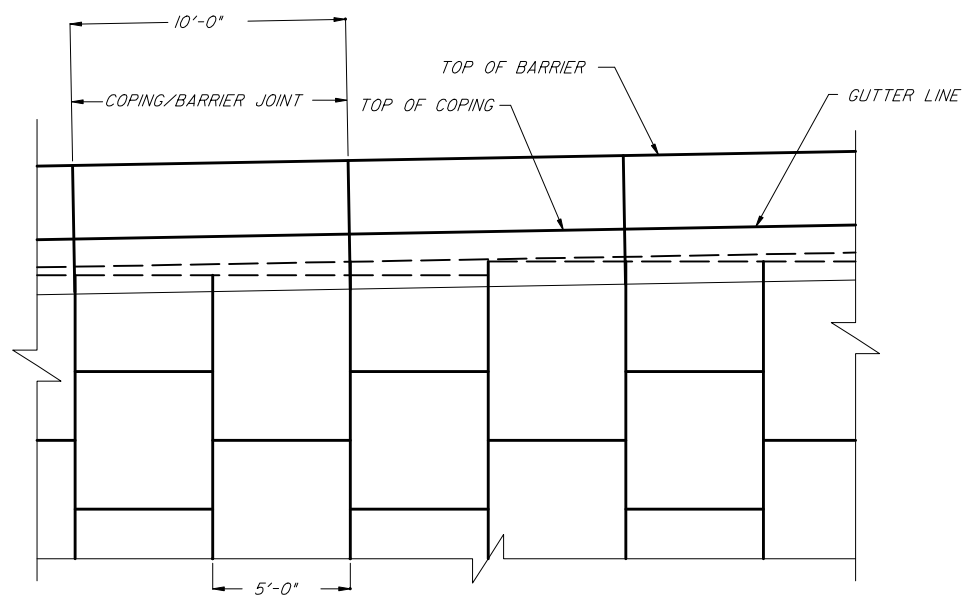
HILFIKER PRODUCTS ARE COVERED BY UNITED STATES AND FOREIGN PATENTS AND PATENTS PENDING. MATERIAL CONTAINED HERE WITHIN IS PROPRIETARY PROPERTY OF T&B STRUCTURAL SYSTEMS AND MAY NOT BE REPRODUCED OR TRANSMITTED. US PATENTS 4,260,296/4,324,508/4,343,572/4,616,959/4,661,023/4,929,125/4,993,879/4,329,089/4,117,686/4,505,621/5,484,235/5,702,208/5,722,799/O.P.

THE DESIGN CONTAINED IN THIS DRAWING IS BASED ON INFORMATION SUPPLIED BY THE FOOT CONSULTANT. T&B IS CERTIFYING THE INTERNAL STABILITY OF THE MSE MASS ONLY. ALL EXTERNAL STABILITY REQUIREMENTS ARE THE RESPONSIBILITY OF THE OWNER.

T&B STRUCTURAL SYSTEMS INC.  
ENGINEERED STRUCTURES  
637 WEST HURST BLVD.  
HURST, TEXAS 76053  
888-280-9858

STATE OF FLORIDA DEPARTMENT OF TRANSPORTATION				
<b>RETAINING WALL SYSTEM HILFIKER SQUARE PANEL</b>				
Designed By	Names	Dates	Approved By <i>W. J. [Signature]</i>	
Drawn By	TPT		Revision	Sheet No. 6 of 13
Checked By	TBW		00	Index No. 5021

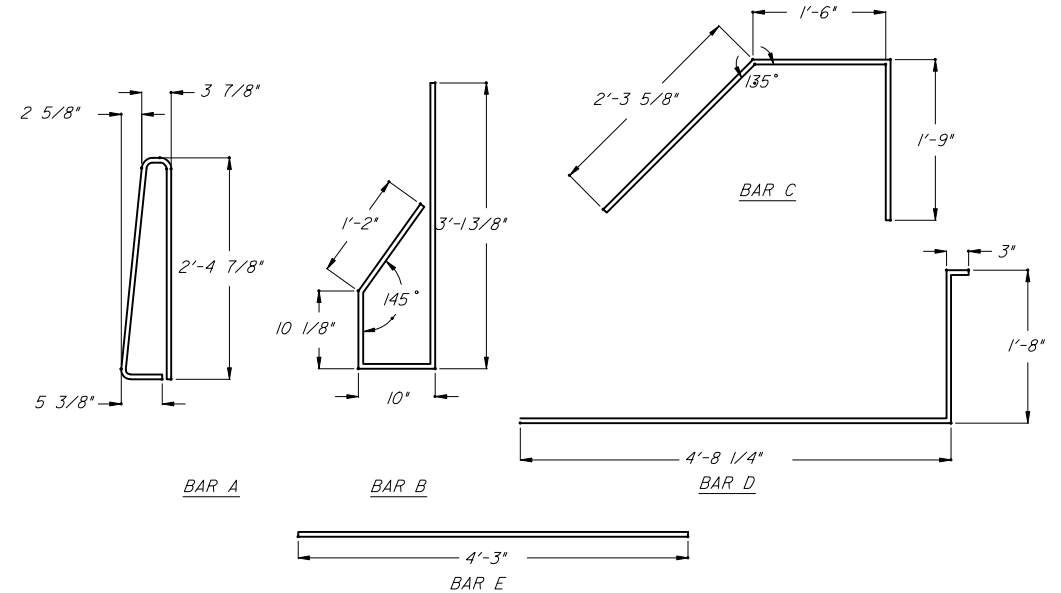
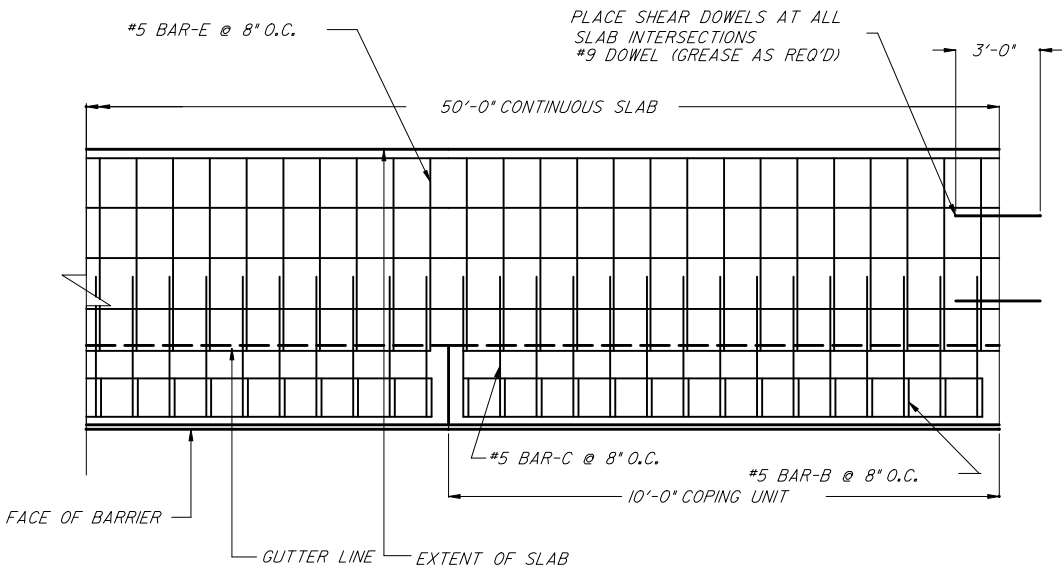
\*\*\*\*\*DGNSPECIFICATION\*\*\*\*\*  
\*\*\*\*\*SYTIME\*\*\*\*\*



**A** PRECAST COPING WITH C.I.P. BARRIER ELEVATION

**C** PRECAST COPING WITH C.I.P. BARRIER AND C.I.P. JUNCTION SLAP

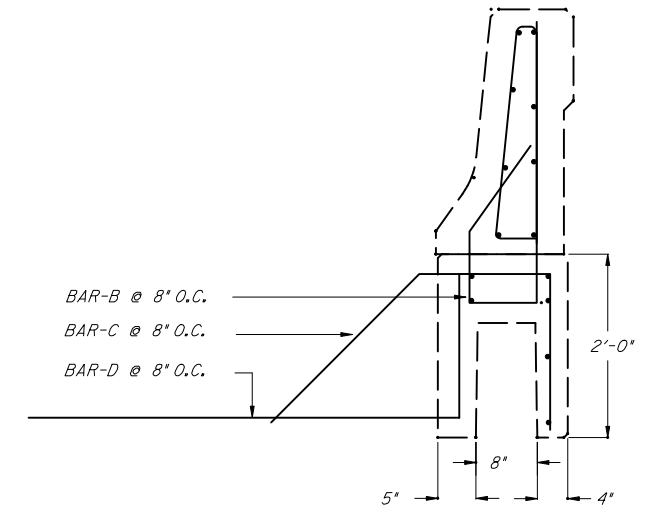
**E** TRAFFIC BARRIER SLIP JOINT



REBAR SCHEDULE

MARK	SIZE	QTY	LENGTH	BENDING
A	#5	11	AS DETAILED	AS DETAILED
B	#5	11	AS DETAILED	AS DETAILED
C	#5	11	AS DETAILED	AS DETAILED
D	#5	11	AS DETAILED	AS DETAILED

QUANTITIES SHOWN ARE FOR A 10'-0" COPING SECTION



REFERENCE FDOT INDEX 700 FOR BARRIER DIMENSIONS NOT SHOWN

**F** PRECAST COPING REBAR LAYOUT

**B** PRECAST COPING WITH C.I.P. BARRIER PLAN

**D** PRECAST BARRIER/COPING REINFORCING

HILFIKER PRODUCTS ARE COVERED BY UNITED STATES AND FOREIGN PATENTS AND PATENTS PENDING. MATERIAL CONTAINED HERE WITHIN IS PROPRIETARY PROPERTY OF T&B STRUCTURAL SYSTEMS AND MAY NOT BE REPRODUCED OR TRANSMITTED. US PATENTS 4,260,296/4,324,508/4,343,572/4,616,959/4,661,023/4,929,125/4,993,879/4,329,089/4,117,686/4,505,621/5,484,235/5,702,208/5,722,799/O.P. THE DESIGN CONTAINED IN THIS DRAWING IS BASED ON INFORMATION SUPPLIED BY THE FOOT CONSULTANT. TBSS IS CERTIFYING THE INTERNAL STABILITY OF THE MSE MASS ONLY. ALL EXTERNAL STABILITY REQUIREMENTS ARE THE RESPONSIBILITY OF THE OWNER.

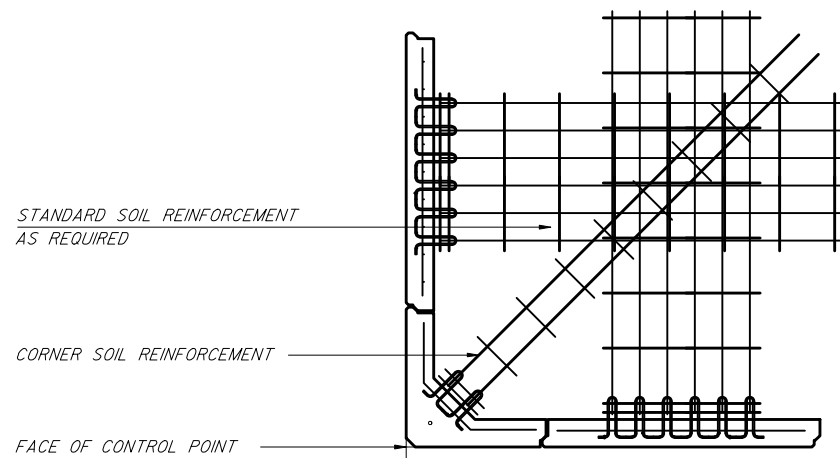
T&B STRUCTURAL SYSTEMS INC.  
ENGINEERED STRUCTURES  
637 WEST HURST BLVD.  
HURST, TEXAS 76053  
888-280-9858

STATE OF FLORIDA DEPARTMENT OF TRANSPORTATION

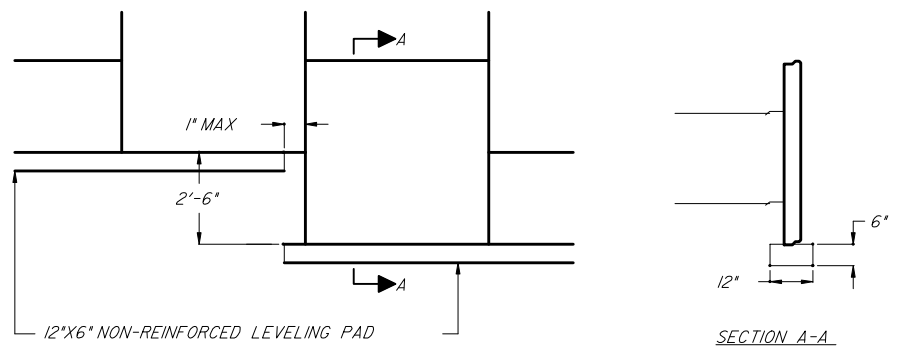
RETAINING WALL SYSTEM  
HILFIKER SQUARE PANEL

Designed By	Names	Dates	Approved By	[Signature]	
Drawn By	TPT		State Structures Design Engineer	Revision	Sheet No.
Checked By	TBW		00	7 of 13	5021

\*\*\*\*\*DGNSPECIFICATION\*\*\*\*\*  
\*\*\*\*\*SYTIME\*\*\*\*\*

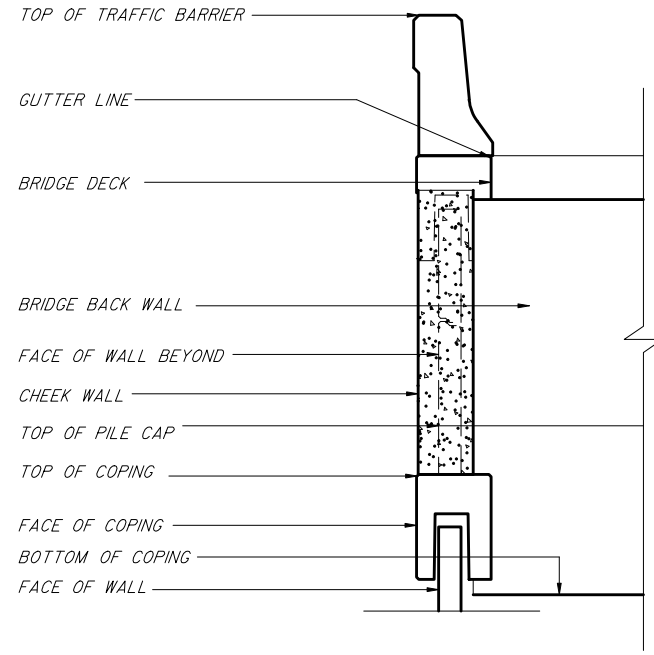


**A** 90° CORNER PLAN

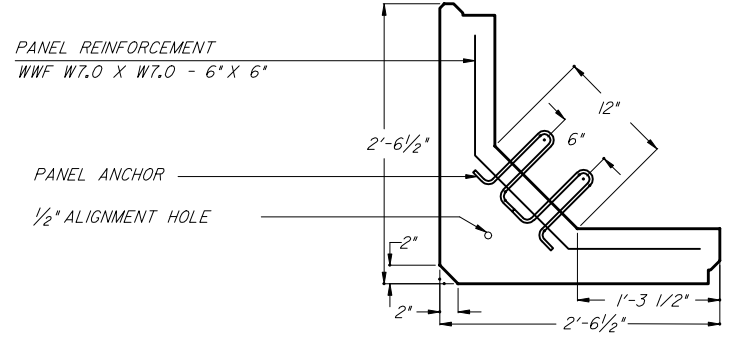


NOTE: LEVELING COURSE SHALL BE PLACED TO THE ELEVATIONS AS SHOWN ON THE PLANS. TOLERANCE FOR ELEVATIONS SHALL BE PLUS-MINUS 1/8"

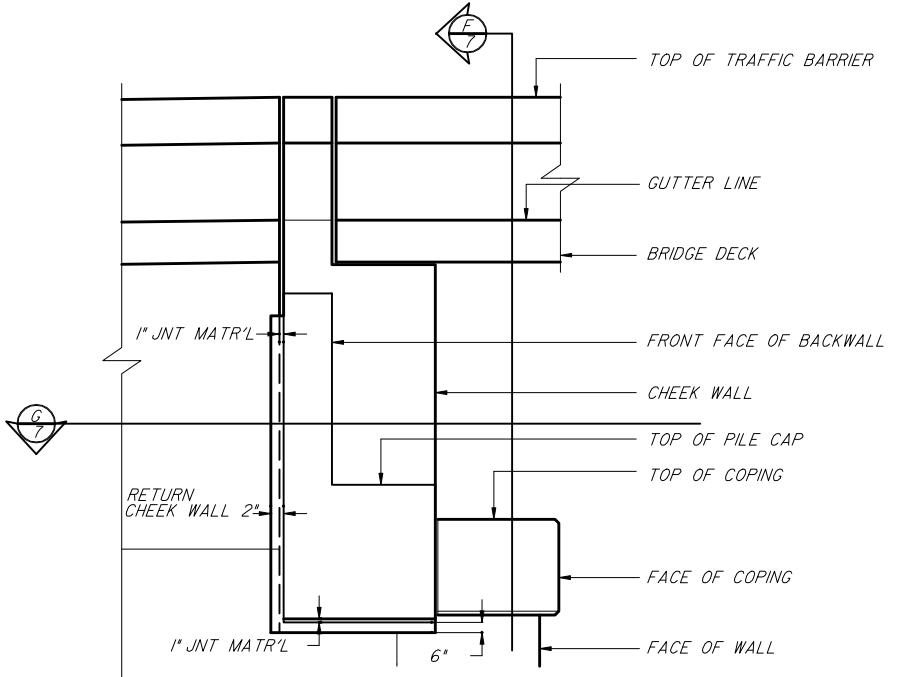
**D** LEVELING COURSE STEP ELEVATION



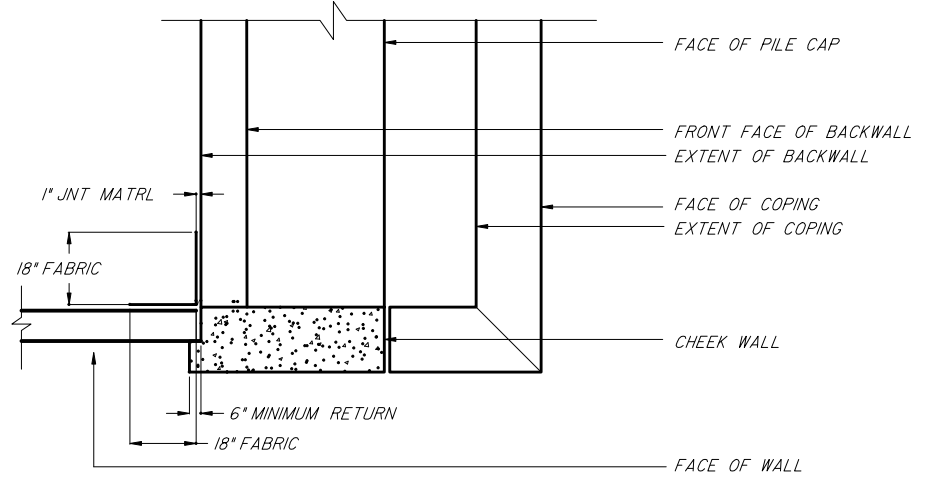
**F** SECTION AT CHEEK WALL



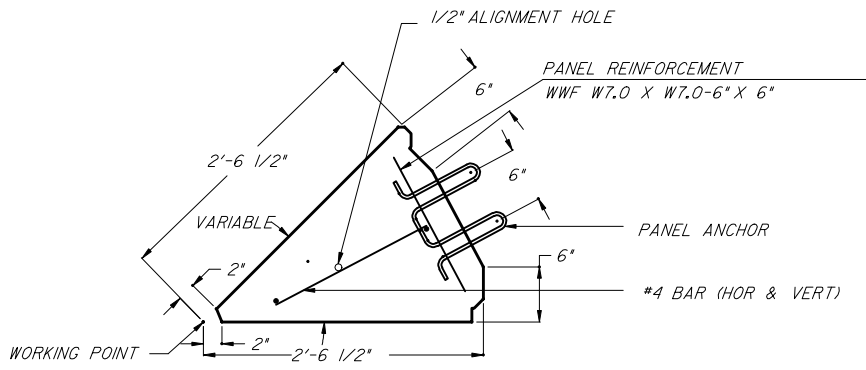
**B** ABTUSE CORNER PANEL  
PANEL ANGLE VARIES FROM 90° TO 180°



**E** ELEVATION AT CHEEK WALL



**G** PLAN SECTION AT CHEEK WALL



**C** ADJUSTABLE CORNER PANEL

HILFIKER PRODUCTS ARE COVERED BY UNITED STATES AND FOREIGN PATENTS AND PATENTS PENDING. MATERIAL CONTAINED HERE WITHIN IS PROPRIETARY PROPERTY OF T&B STRUCTURAL SYSTEMS AND MAY NOT BE REPRODUCED OR TRANSMITTED. US PATENTS 4,260,296/4,324,508/4,343,572/4,616,959/4,661,023/4,929,125/4,993,879/4,329,089/4,117,686/4,505,621/5,484,235/5,702,208/5,722,799/O.P.

THE DESIGN CONTAINED IN THIS DRAWING IS BASED ON INFORMATION SUPPLIED BY THE FOOT CONSULTANT. TBSS IS CERTIFYING THE INTERNAL STABILITY OF THE MSE MASS ONLY. ALL EXTERNAL STABILITY REQUIREMENTS ARE THE RESPONSIBILITY OF THE OWNER.

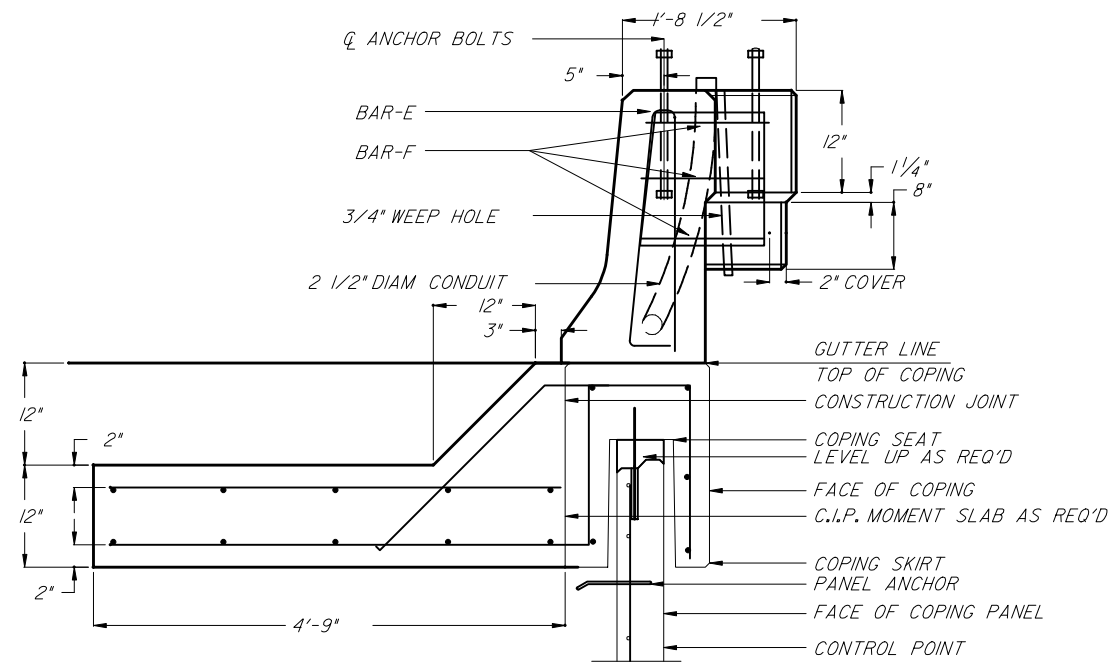
T&B STRUCTURAL SYSTEMS INC.  
ENGINEERED STRUCTURES  
637 WEST HURST BLVD.  
HURST, TEXAS 76053  
888-280-9858

**HW** HILFIKER RETAINING WALL

STATE OF FLORIDA DEPARTMENT OF TRANSPORTATION				
<b>RETAINING WALL SYSTEM HILFIKER SQUARE PANEL</b>				
Designed By	Names	Dates	Approved By <i>W. V. [Signature]</i>	
Drawn By	TPT		Revision	Sheet No. 8 of 13
Checked By	TBW		00	Index No. 5021

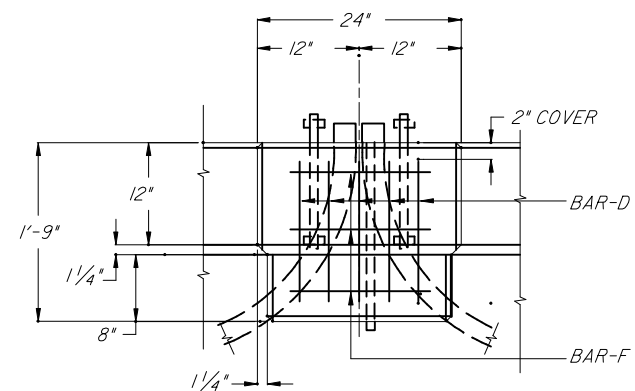
\*\*\*\*\*DGNSPECIFICATION\*\*\*\*\*  
\*\*\*\*\*SYTIME\*\*\*\*\*





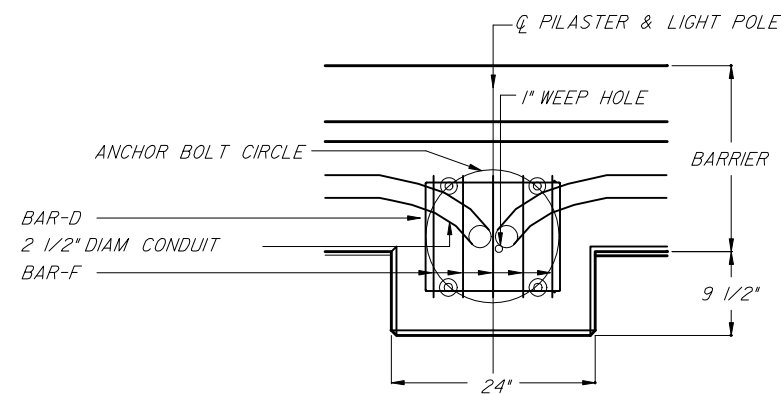
FOR ADDITIONAL DETAILS REFERENCE FDOT LIGHT POLE PILASTER SEE STRUCTURES STANDARD DRAWING 500  
FOR JUNCTION SLAB DIMENSIONS AND REINFORCING REFERENCE SHEET HW-6

**A** PRECAST COPING WITH PILASTER SECTION  
8



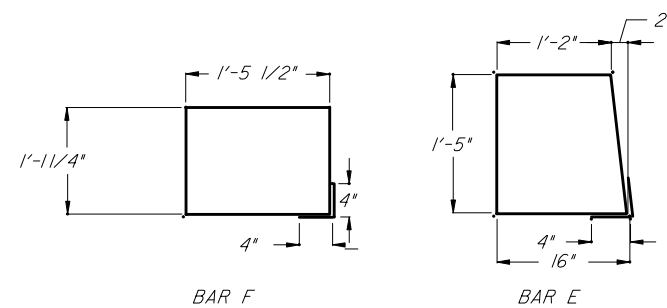
FOR ADDITIONAL DETAILS REFERENCE FDOT LIGHT POLE PILASTER SEE STRUCTURES STANDARD DRAWING 500

**C** PILASTER ELEVATION  
8



FOR ADDITIONAL DETAILS REFERENCE FDOT LIGHT POLE PILASTERS SEE STRUCTURES STANDARD DRAWING 500

**B** PILASTER PLAN VIEW  
8



REBAR SCHEDULE

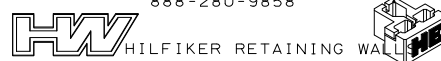
MARK	SIZE	QTY	LENGTH	BENDING
D	#5	5	AS DETAILED	AS DETAILED
F	#5	3	AS DETAILED	AS DETAILED

**D** PILASTER REINFORCING SCHEDULE  
8

HILFIKER PRODUCTS ARE COVERED BY UNITED STATES AND FOREIGN PATENTS AND PATENTS PENDING. MATERIAL CONTAINED HERE WITHIN IS PROPRIETARY PROPERTY OF T&B STRUCTURAL SYSTEMS AND MAY NOT BE REPRODUCED OR TRANSMITTED. US PATENTS 4,260,296/4,324,508/4,343,572/4,616,959/4,661,023/4,929,125/4,993,879/4,329,089/4,117,686/4,505,621/5,484,235/5,702,208/5,722,799/0.P.

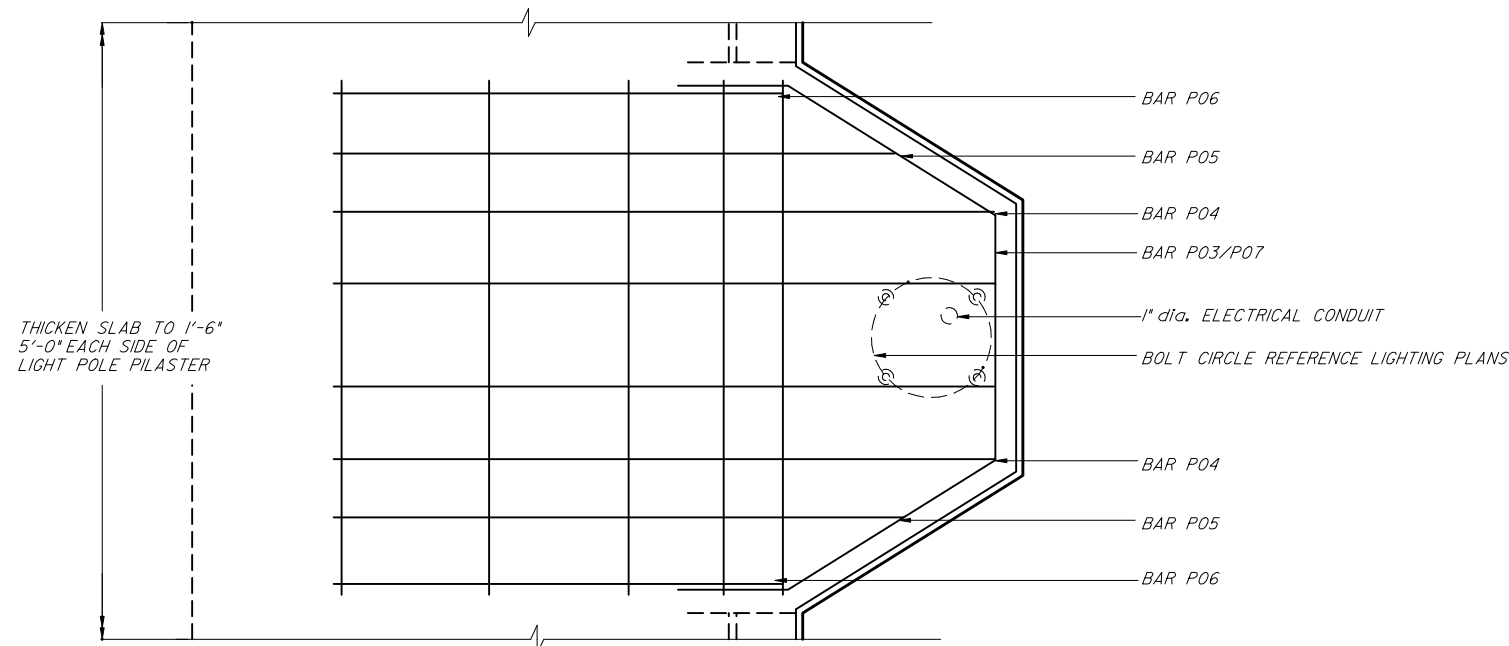
THE DESIGN CONTAINED IN THIS DRAWING IS BASED ON INFORMATION SUPPLIED BY THE FDOT CONSULTANT. TBSS IS CERTIFYING THE INTERNAL STABILITY OF THE MSE MASS ONLY. ALL EXTERNAL STABILITY REQUIREMENTS ARE THE RESPONSIBILITY OF THE OWNER.

T&B STRUCTURAL SYSTEMS INC.  
ENGINEERED STRUCTURES  
637 WEST HURST BLVD.  
HURST, TEXAS 76053  
888-280-9858



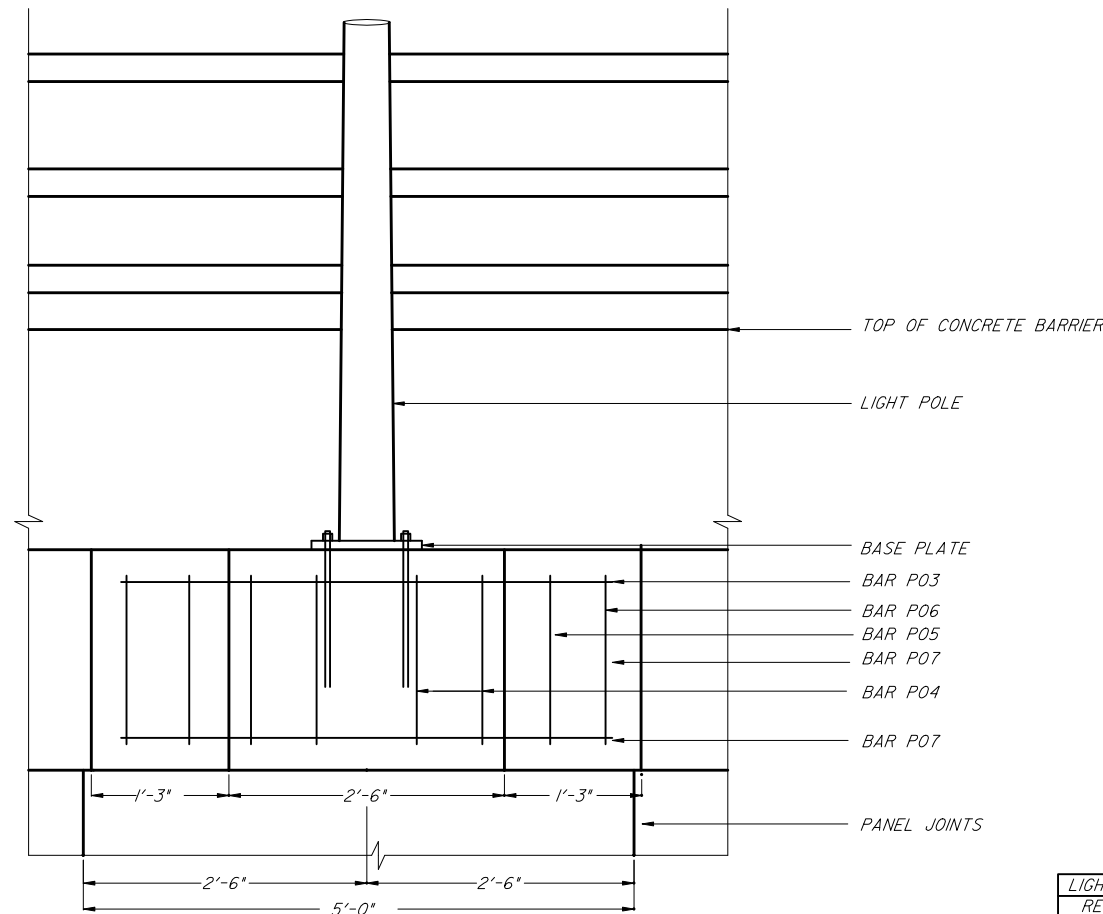
STATE OF FLORIDA DEPARTMENT OF TRANSPORTATION				
RETAINING WALL SYSTEM HILFIKER SQUARE PANEL				
Names	Dates	Approved By		
Designed By		W. J. [Signature]		
Drawn By	TPT	State Structures Design Engineer		
Checked By	TBW	Revision	Sheet No.	Index No.
		00	9 of 13	5021

\*\*\*\*\*DGNSPECIFICATION\*\*\*\*\*  
\*\*\*\*\*SYTIME\*\*\*\*\*



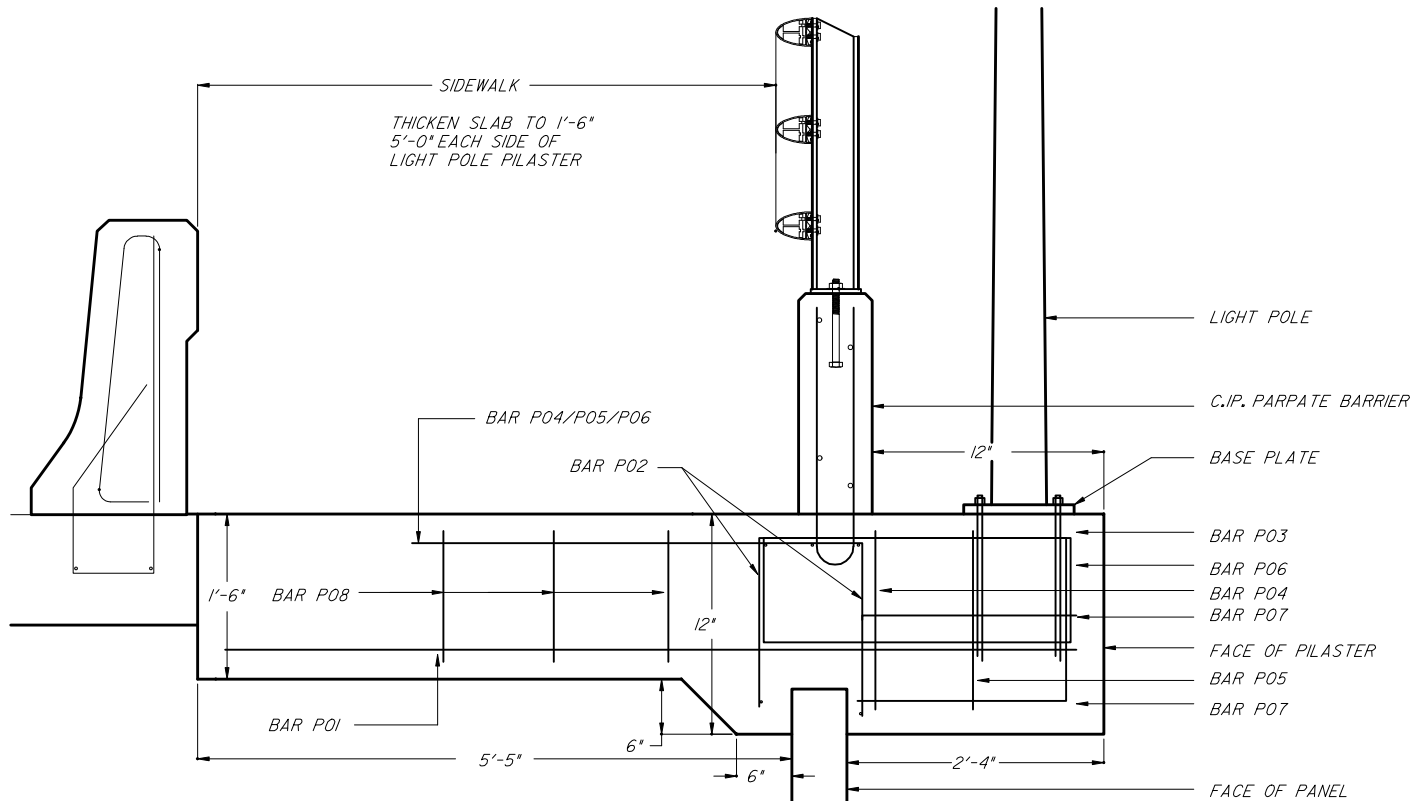
FOR ADDITIONAL DETAILS REFERENCE STRUCTURES STANDARD DRAWING 720

**A** PLAN BARRIER DETAIL @ LIGHT POLE  
 9 HORIZONTAL REINFORCING NOT SHOWN FOR CLARITY

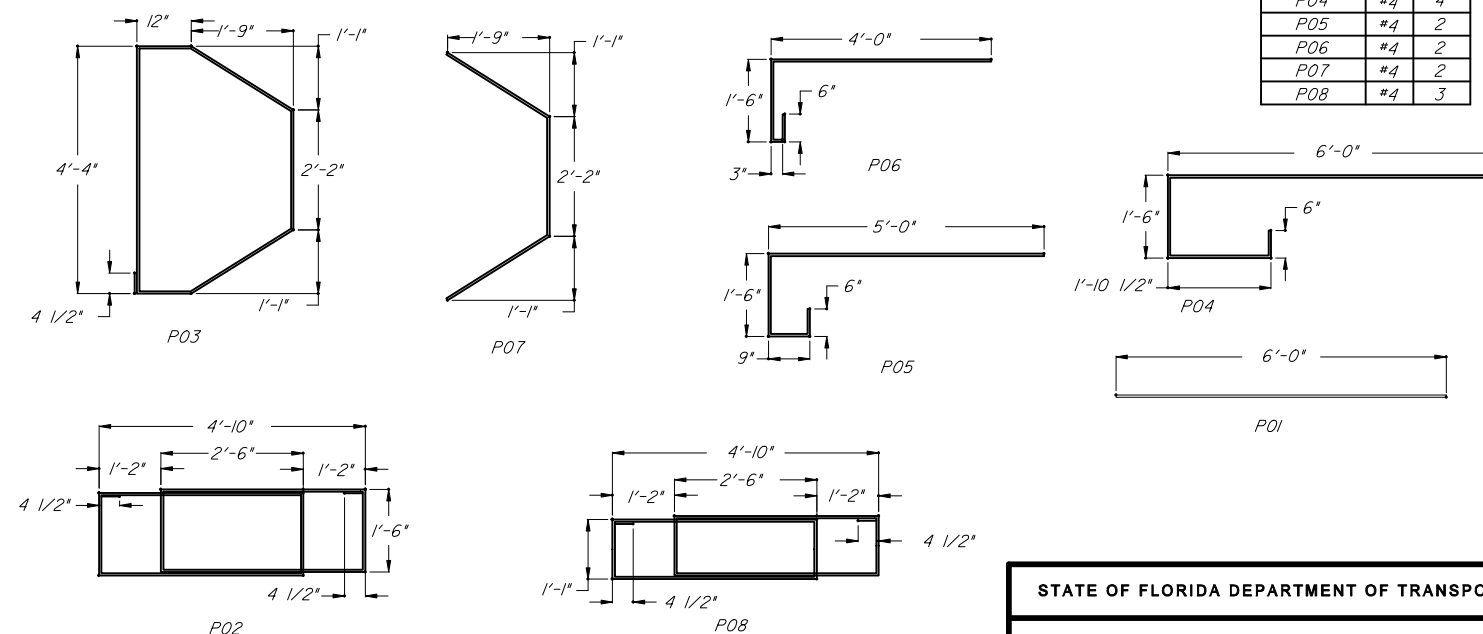


**B** ELEVATION BARRIER DETAIL @ LIGHT POLE  
 9

LIGHT POLE PILASTER REBAR SCHEDULE		
MARK	SIZE	QTY
P01	#4	6
P02	#4	2
P03	#4	1
P04	#4	4
P05	#4	2
P06	#4	2
P07	#4	2
P08	#4	3



**C** SECTION BARRIER DETAIL @ LIGHT POLE  
 9

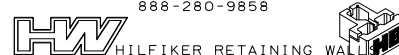


**D** LIGHT POLE PILASTER REINFORCING DETAIL  
 9

HILFIKER PRODUCTS ARE COVERED BY UNITED STATES AND FOREIGN PATENTS AND PATENTS PENDING. MATERIAL CONTAINED HERE WITHIN IS PROPRIETARY PROPERTY OF T&B STRUCTURAL SYSTEMS AND MAY NOT BE REPRODUCED OR TRANSMITTED. US PATENTS 4,260,296/4,324,508/4,343,572/4,616,959/4,661,023/4,929,125/4,993,879/4,329,089/4,117,686/4,505,621/5,484,235/5,702,208/5,722,799/O.P.

THE DESIGN CONTAINED IN THIS DRAWING IS BASED ON INFORMATION SUPPLIED BY THE FOOT CONSULTANT. TBSS IS CERTIFYING THE INTERNAL STABILITY OF THE MSE MASS ONLY. ALL EXTERNAL STABILITY REQUIREMENTS ARE THE RESPONSIBILITY OF THE OWNER.

T&B STRUCTURAL SYSTEMS INC.  
 ENGINEERED STRUCTURES  
 637 WEST HURST BLVD.  
 HURST, TEXAS 76053  
 888-280-9858

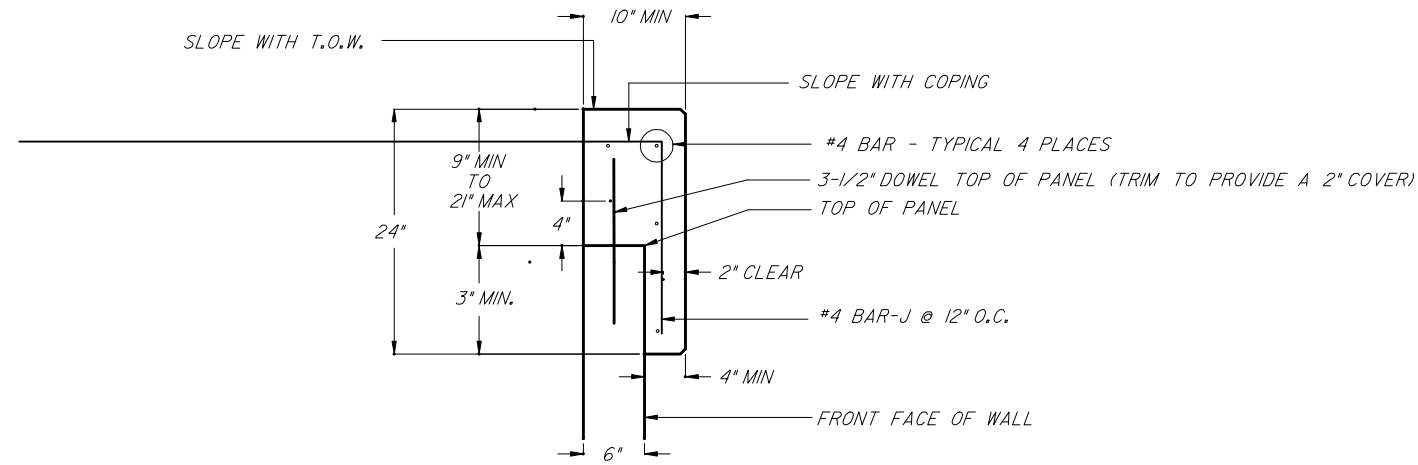


STATE OF FLORIDA DEPARTMENT OF TRANSPORTATION

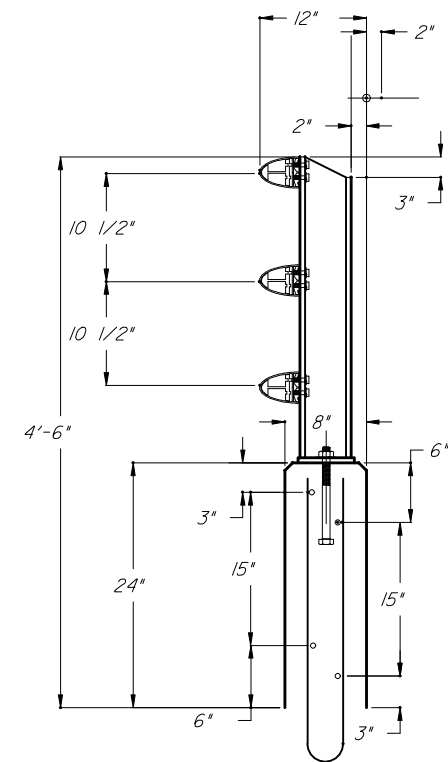
RETAINING WALL SYSTEM  
 HILFIKER SQUARE PANEL

Names	Dates	Approved By				
Designed By		 State Structures Design Engineer				
Drawn By	TPT				Revision	Sheet No.
Checked By	TBW				00	10 of 13
		Index No.	5021			

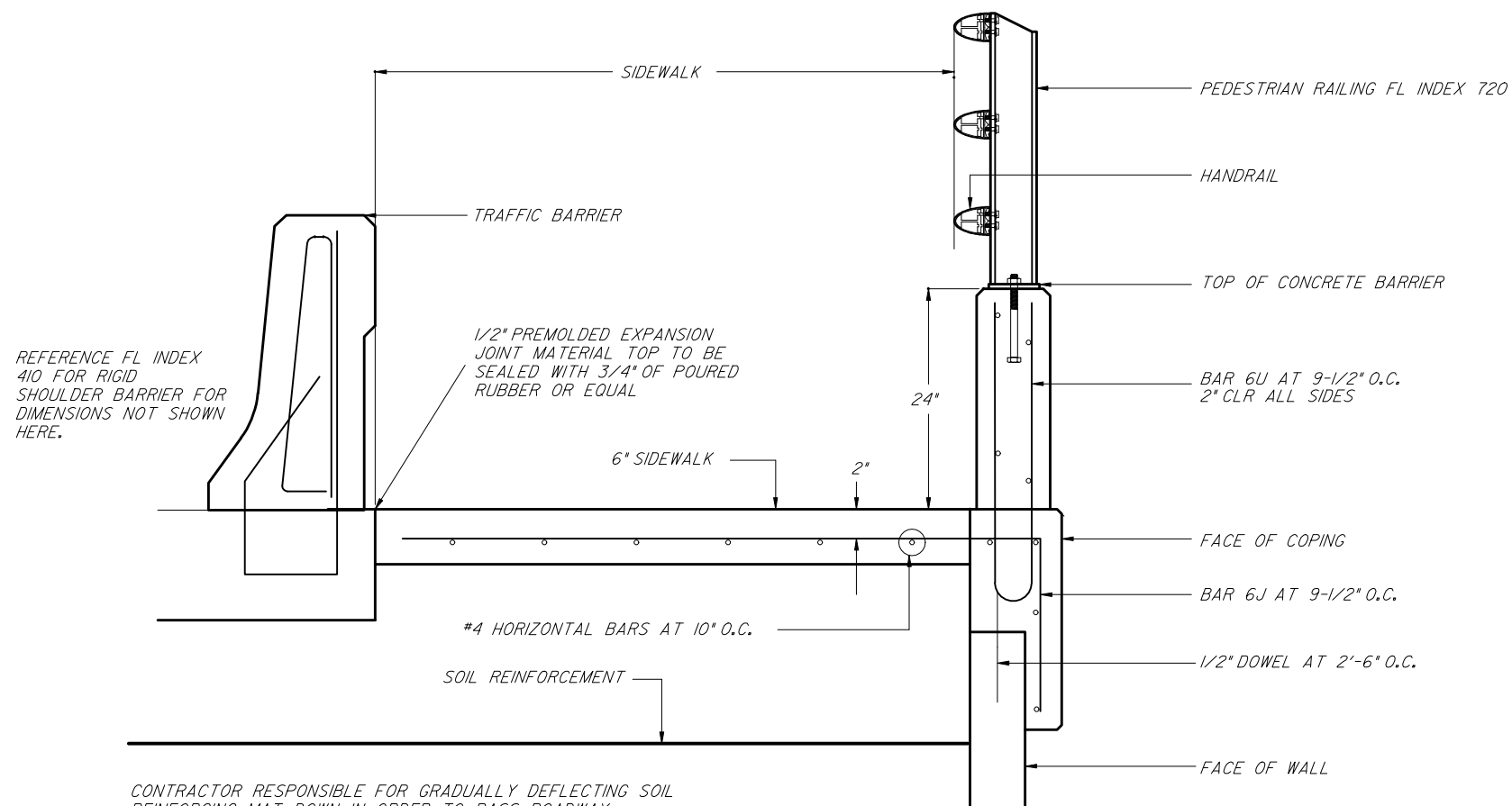
\*\*\*\*\*DGN SPECIFICATION\*\*\*\*\*  
 \*\*\*\*\*SYTIME\*\*\*\*\*



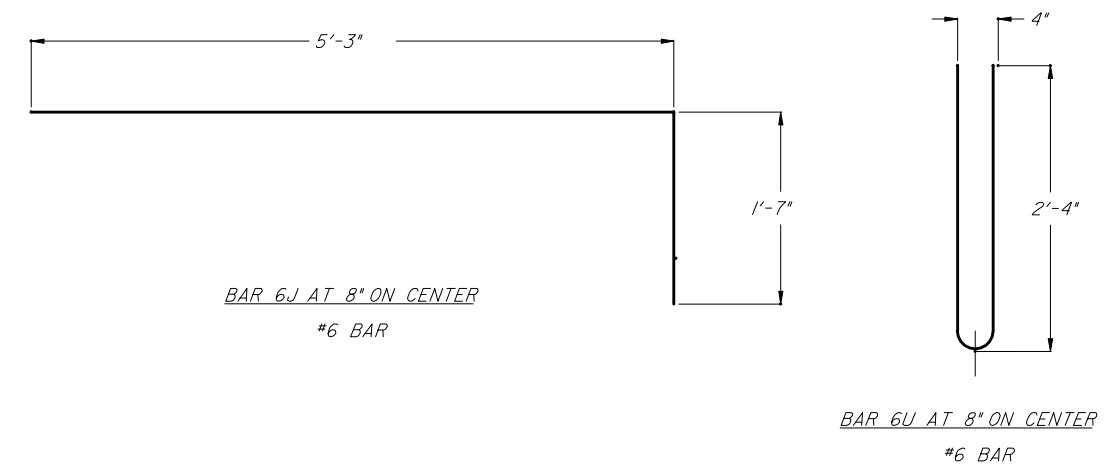
**A** SECTION C.I.P. PARAPET COPING  
 10 HORIZONTAL REINFORCING NOT SHOWN FOR CLARITY



**B** SECTION C.I.P. PEDESTRIAN BARRIER  
 10 REFERENCE STRUCTURES STANDARD DRAWING 720 FOR DETAILS NOT SHOWN



**C** SECTION C.I.P. BARRIER WITH PEDESTRIAN RAILING  
 10



**D** C.I.P. COPING WITH PEDESTRIAN BARRIER BAR DETAILS  
 10

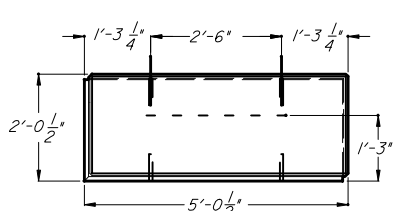
HILFIKER PRODUCTS ARE COVERED BY UNITED STATES AND FOREIGN PATENTS AND PATENTS PENDING. MATERIAL CONTAINED HERE WITHIN IS PROPRIETARY PROPERTY OF T&B STRUCTURAL SYSTEMS AND MAY NOT BE REPRODUCED OR TRANSMITTED. US PATENTS 4,260,296/4,324,508/4,343,572/4,616,959/4,661,023/4,929,125/4,993,879/4,329,089/4,117,686/4,505,621/5,484,235/5,702,208/5,722,799/0.P.

THE DESIGN CONTAINED IN THIS DRAWING IS BASED ON INFORMATION SUPPLIED BY THE FDOT CONSULTANT. TBSS IS CERTIFYING THE INTERNAL STABILITY OF THE MSE MASS ONLY. ALL EXTERNAL STABILITY REQUIREMENTS ARE THE RESPONSIBILITY OF THE OWNER.

T&B STRUCTURAL SYSTEMS INC.  
 ENGINEERED STRUCTURES  
 637 WEST HURST BLVD.  
 HURST, TEXAS 76053  
 888-280-9858

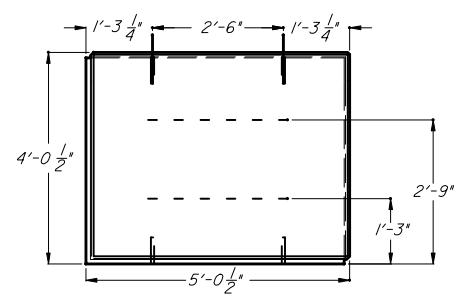
STATE OF FLORIDA DEPARTMENT OF TRANSPORTATION				
RETAINING WALL SYSTEM HILFIKER SQUARE PANEL				
Names	Dates	Approved By		
Designed By		W. J. [Signature]		
Drawn By	TPT	Revision	Sheet No.	Index No.
Checked By	TBW	00	11 of 13	5021

\*\*\*\*\*DGNSPECIFICATION\*\*\*\*\*  
 \*\*\*\*\*SYTIME\*\*\*\*\*



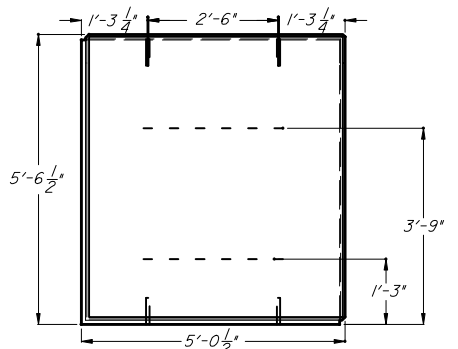
PANEL MATERIAL LIST		
DESG.	SIZE AND TYPE	QTY.
ANCHOR	W12	1 OF 6
CAGE	W7.0 - 6" X 6"	1
PVC	3/4" DIAM	4
HOOK	PRE-BENT	4

TYPE A - 2'-0" PANEL



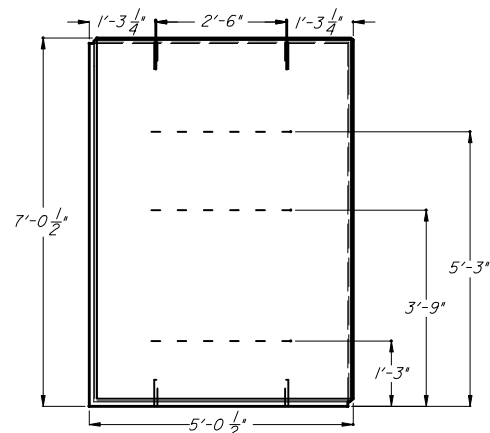
PANEL MATERIAL LIST		
DESG.	SIZE AND TYPE	QTY.
ANCHOR	W12	2 OF 6
CAGE	W7.0 - 6" X 6"	1
PVC	3/4" DIAM	4
HOOK	PRE-BENT	4

TYPE E - 4'-0" PANEL



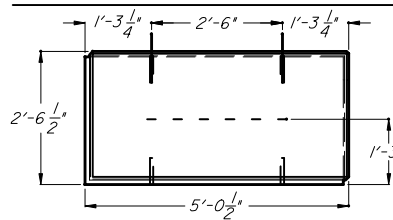
PANEL MATERIAL LIST		
DESG.	SIZE AND TYPE	QTY.
ANCHOR	W12	2 OF 6
CAGE	W7.0 - 6" X 6"	1
PVC	3/4" DIAM	4
HOOK	PRE-BENT	4

TYPE H - 5'-6" PANEL



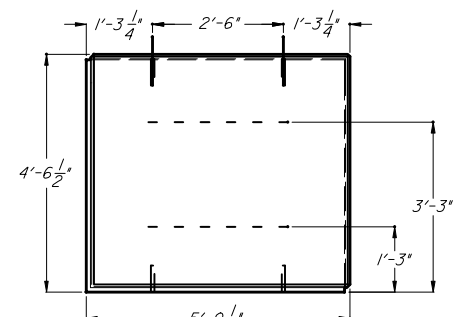
PANEL MATERIAL LIST		
DESG.	SIZE AND TYPE	QTY.
ANCHOR	W12	3 OF 6
CAGE	W7.0 - 6" X 6"	1
PVC	3/4" DIAM	4
HOOK	PRE-BENT	4

TYPE L - 7'-0" PANEL



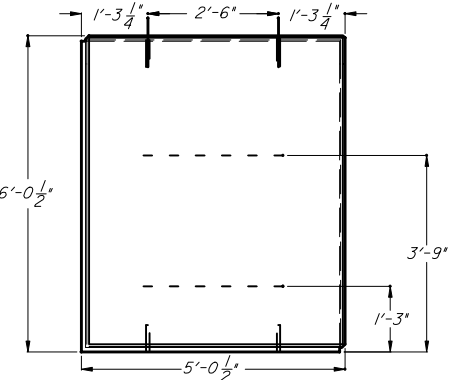
PANEL MATERIAL LIST		
DESG.	SIZE AND TYPE	QTY.
ANCHOR	W12	1 OF 6
CAGE	W7.0 - 6" X 6"	1
PVC	3/4" DIAM	4
HOOK	PRE-BENT	4

TYPE B - 2'-6" PANEL



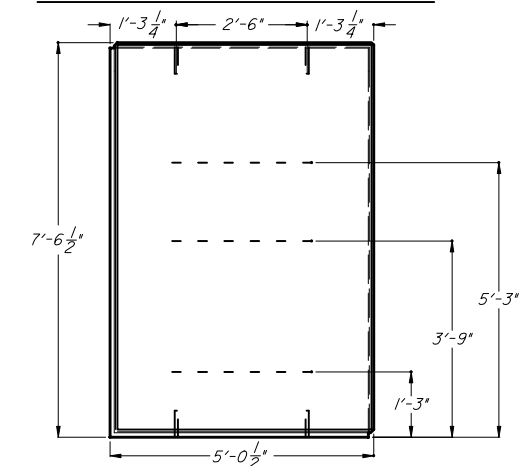
PANEL MATERIAL LIST		
DESG.	SIZE AND TYPE	QTY.
ANCHOR	W12	2 OF 6
CAGE	W7.0 - 6" X 6"	1
PVC	3/4" DIAM	4
HOOK	PRE-BENT	4

TYPE F - 4'-6" PANEL



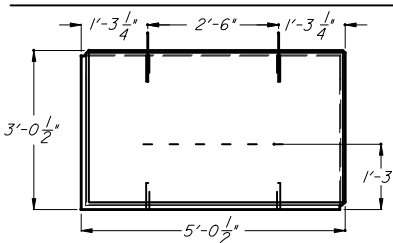
PANEL MATERIAL LIST		
DESG.	SIZE AND TYPE	QTY.
ANCHOR	W12	2 OF 6
CAGE	W7.0 - 6" X 6"	1
PVC	3/4" DIAM	4
HOOK	PRE-BENT	4

TYPE J - 6'-0" PANEL



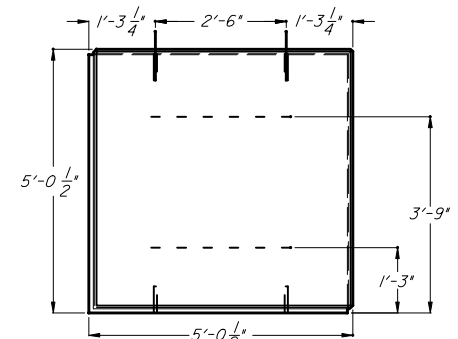
PANEL MATERIAL LIST		
DESG.	SIZE AND TYPE	QTY.
ANCHOR	W12	1 OF 6
CAGE	W7.0 - 6" X 6"	1
PVC	3/4" DIAM	4
HOOK	PRE-BENT	4

TYPE M - 7'-6" PANEL



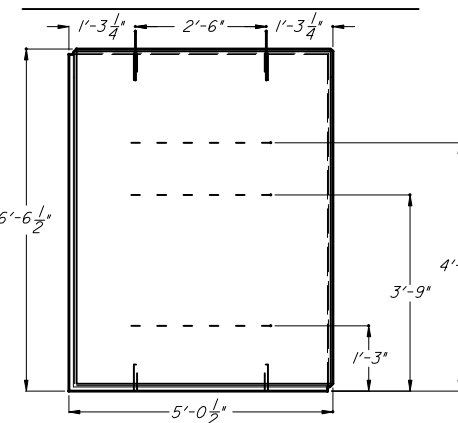
PANEL MATERIAL LIST		
DESG.	SIZE AND TYPE	QTY.
ANCHOR	W12	1 OF 6
CAGE	W7.0 - 6" X 6"	1
PVC	3/4" DIAM	4
HOOK	PRE-BENT	4

TYPE C - 3'-0" PANEL



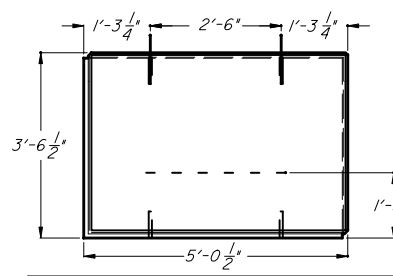
PANEL MATERIAL LIST		
DESG.	SIZE AND TYPE	QTY.
ANCHOR	W12	2 OF 6
CAGE	W7.0 - 6" X 6"	1
PVC	3/4" DIAM	4
HOOK	PRE-BENT	4

TYPE G - 5'-0" PANEL



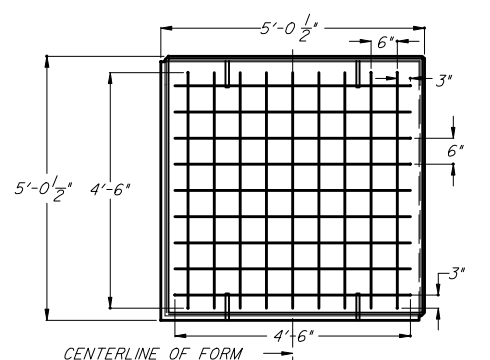
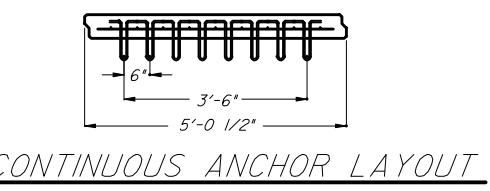
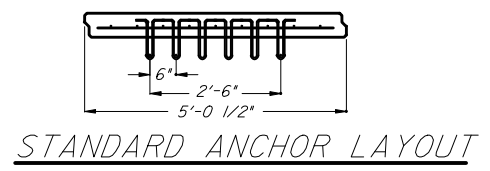
PANEL MATERIAL LIST		
DESG.	SIZE AND TYPE	QTY.
ANCHOR	W12	3 OF 6
CAGE	W7.0 - 6" X 6"	1
PVC	3/4" DIAM	4
HOOK	PRE-BENT	4

TYPE K - 6'-6" PANEL



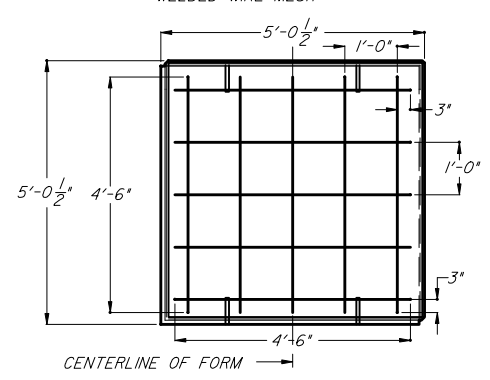
PANEL MATERIAL LIST		
DESG.	SIZE AND TYPE	QTY.
ANCHOR	W12	1 OF 6
CAGE	W7.0 - 6" X 6"	1
PVC	3/4" DIAM	4
HOOK	PRE-BENT	4

TYPE D - 3'-6" PANEL



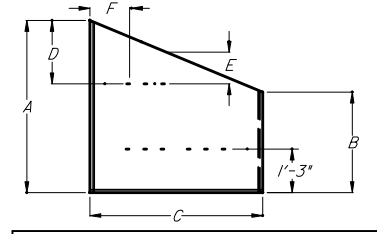
- NOTE:
1. MINIMUM 3" COVER AT ALL EDGES
  2. CENTER MESH IN FORM
  3. WIRE MESH TO BE PLACED ON TOP OF PVC ALIGNMENT SLEEVES.
  4. TRIM AS REQUIRED
  5. MINIMUM W7.0 X W7.0 WWF

PANEL REINFORCING LAYOUT



- NOTE:
1. MINIMUM 3" COVER AT ALL EDGES
  2. CENTER REBAR IN FORM
  3. REBAR TO BE PLACED ON TOP OF PVC ALIGNMENT SLEEVES.
  4. TRIM AS REQUIRED
  5. MINIMUM #4 BAR BOTH WAYS
  6. TIE REBAR TOGETHER AT INTERSECTION POINTS

PANEL REINFORCING LAYOUT



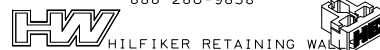
PANEL MATERIAL LIST		
DESG.	SIZE AND TYPE	QTY.
ANCHOR	W12	VARIABLE
CAGE	W7.0 - 6" X 6"	1
PVC	3/4" DIAM	4
HOOK	PRE-BENT	4

SPECIAL SLOPED PANEL

HILFIKER PRODUCTS ARE COVERED BY UNITED STATES AND FOREIGN PATENTS AND PATENTS PENDING. MATERIAL CONTAINED HEREIN IS PROPRIETARY PROPERTY OF T&B STRUCTURAL SYSTEMS AND MAY NOT BE REPRODUCED OR TRANSMITTED. US PATENTS 4,260,296/4,324,508/4,343,572/4,616,959/4,661,023/4,929,125/4,993,879/4,329,089/4,117,686/4,505,621/5,484,235/5,702,208/5,722,799/70.P.


THE DESIGN CONTAINED IN THIS DRAWING IS BASED ON INFORMATION SUPPLIED BY THE FOOT CONSULTANT. TBSS IS CERTIFYING THE INTERNAL STABILITY OF THE USE MASS ONLY. ALL EXTERNAL STABILITY REQUIREMENTS ARE THE RESPONSIBILITY OF THE OWNER.

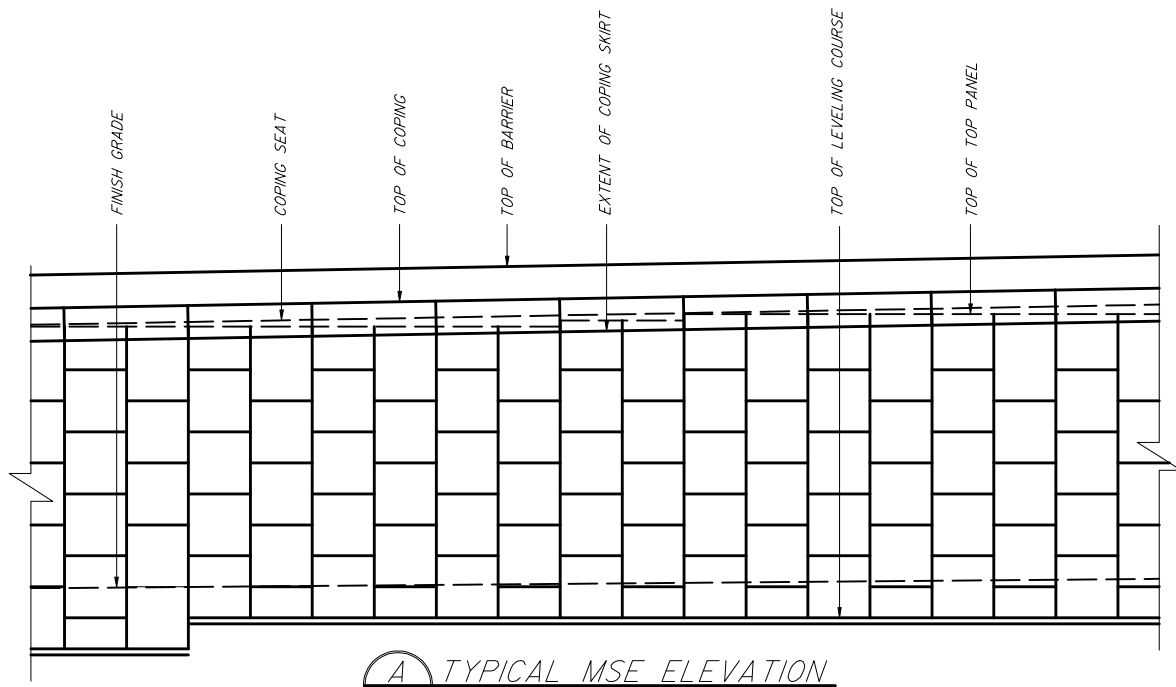
T&B STRUCTURAL SYSTEMS INC.  
ENGINEERED STRUCTURES  
637 WEST HURST BLVD.  
HURST, TEXAS 76053  
888-280-9858



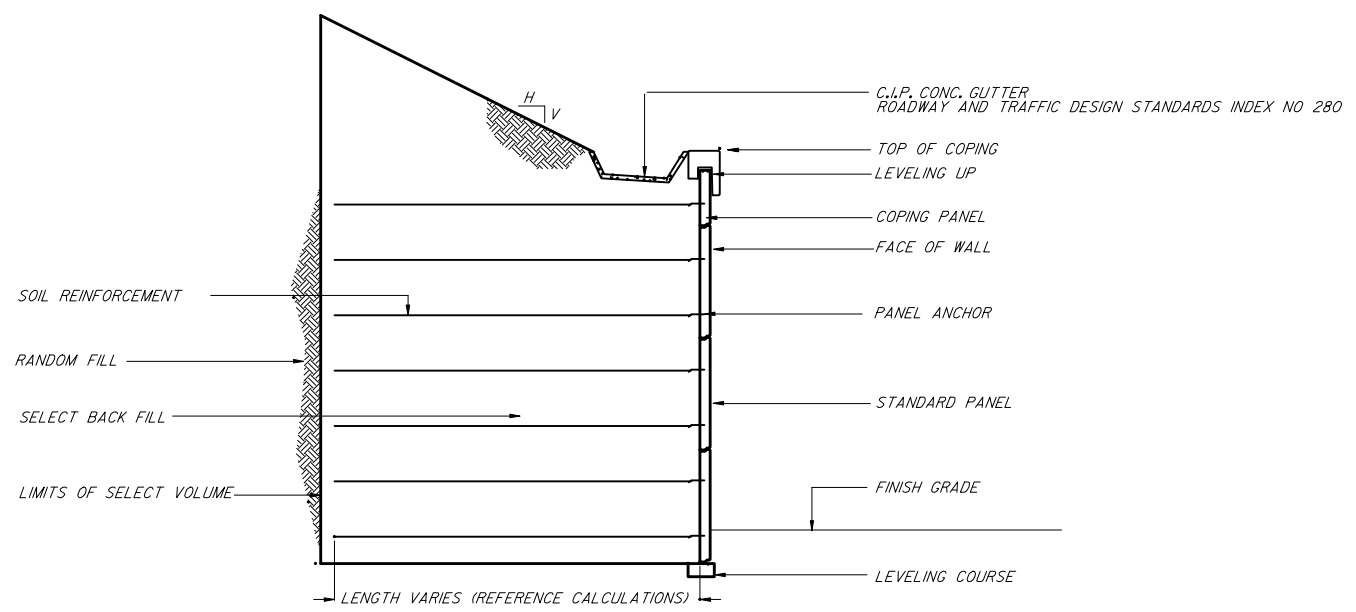
STATE OF FLORIDA DEPARTMENT OF TRANSPORTATION

RETAINING WALL SYSTEM  
HILFIKER SQUARE PANEL

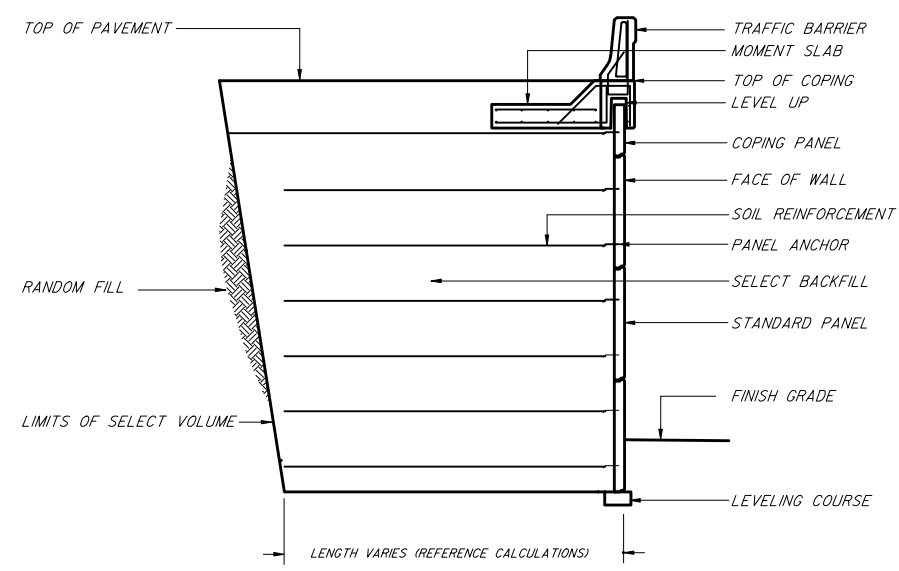
Names	Dates	Approved By			
Designed By		 State Structures Design Engineer			
Drawn By	TPT				
Checked By	TBW				
Revision	00	Sheet No.	12 of 13	Index No.	5021



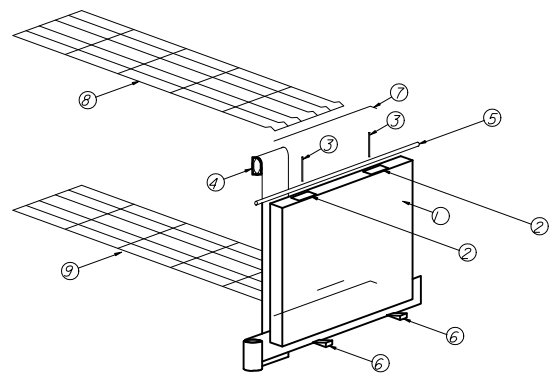
**A** TYPICAL MSE ELEVATION  
12



**B** TYPICAL MSE SECTION WITH SLOPE  
12

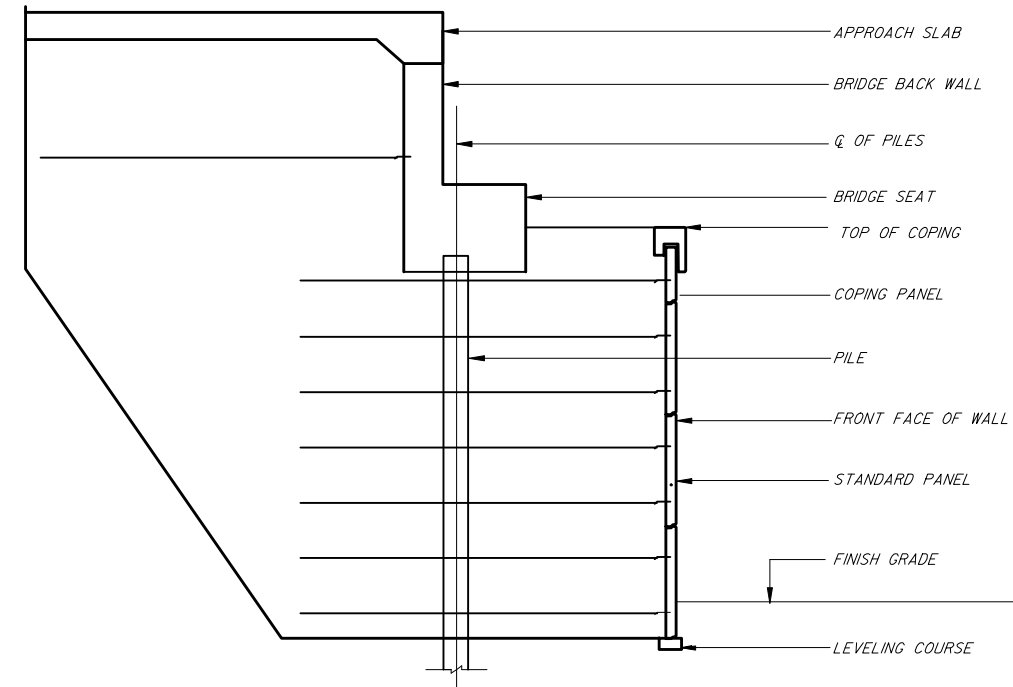


**C** TYPICAL MSE SECTION WITH BARRIER  
12



1. TYPICAL PRE-CAST PANEL WITH CAST IN PLACE ANCHORS
2. 3" X 8" X 3/4" NEOPRENE PAD 2 PER PANEL
3. 1/2" X 8" GALVANIZED STEEL ALIGNMENT PIN
4. 12" FILTER FABRIC
5. 3/4" BACKER ROD (OPTIONAL BY OTHERS)
6. HARD WOOD SHIMS (USE IF NECESSARY)
7. CONNECTION PIN - 1 PER SOIL REINFORCING MAT
8. WELDED WIRE GRID SOIL REINFORCING MAT (AS REQUIRED)
9. WELDED WIRE GRID SOIL REINFORCING MAT (AS REQUIRED)

**D** TYPICAL MATERIAL ISOMETRIC  
12



**E** TYPICAL MSE SECTION AT ABUTMENT  
12

HILFIKER PRODUCTS ARE COVERED BY UNITED STATES AND FOREIGN PATENTS AND PATENTS PENDING. MATERIAL CONTAINED HERE WITHIN IS PROPRIETARY PROPERTY OF T&B STRUCTURAL SYSTEMS AND MAY NOT BE REPRODUCED OR TRANSMITTED. US PATENTS 4,260,296/4,324,508/4,343,572/4,616,959/4,661,023/4,929,125/4,993,879/4,329,089/4,117,686/4,505,621/5,484,235/5,702,208/5,722,799/0.P.  
THE DESIGN CONTAINED IN THIS DRAWING IS BASED ON INFORMATION SUPPLIED BY THE FOOT CONSULTANT. TBSS IS CERTIFYING THE INTERNAL STABILITY OF THE MSE MASS ONLY. ALL EXTERNAL STABILITY REQUIREMENTS ARE THE RESPONSIBILITY OF THE OWNER.

T&B STRUCTURAL SYSTEMS INC.  
ENGINEERED STRUCTURES  
637 WEST HURST BLVD.  
HURST, TEXAS 76053  
888-280-9858  
HILFIKER RETAINING WALL

STATE OF FLORIDA DEPARTMENT OF TRANSPORTATION				
<b>RETAINING WALL SYSTEM HILFIKER SQUARE PANEL</b>				
Designed By	Names	Dates	Approved By <i>W. V. [Signature]</i>	
Drawn By	TPT		Revision	Sheet No. Index No.
Checked By	TBW		00	13 of 13 5021

\*\*\*\*\*DGNSPECIFICATION\*\*\*\*\*  
\*\*\*\*\*SYTIME\*\*\*\*\*