

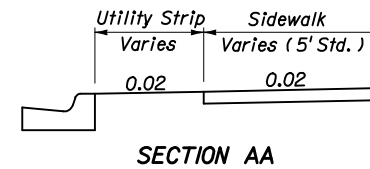
EXAGGERATED SCALE
LONGITUDINAL SECTION
SIDEWALK JOINTS

JOINT LEGEND

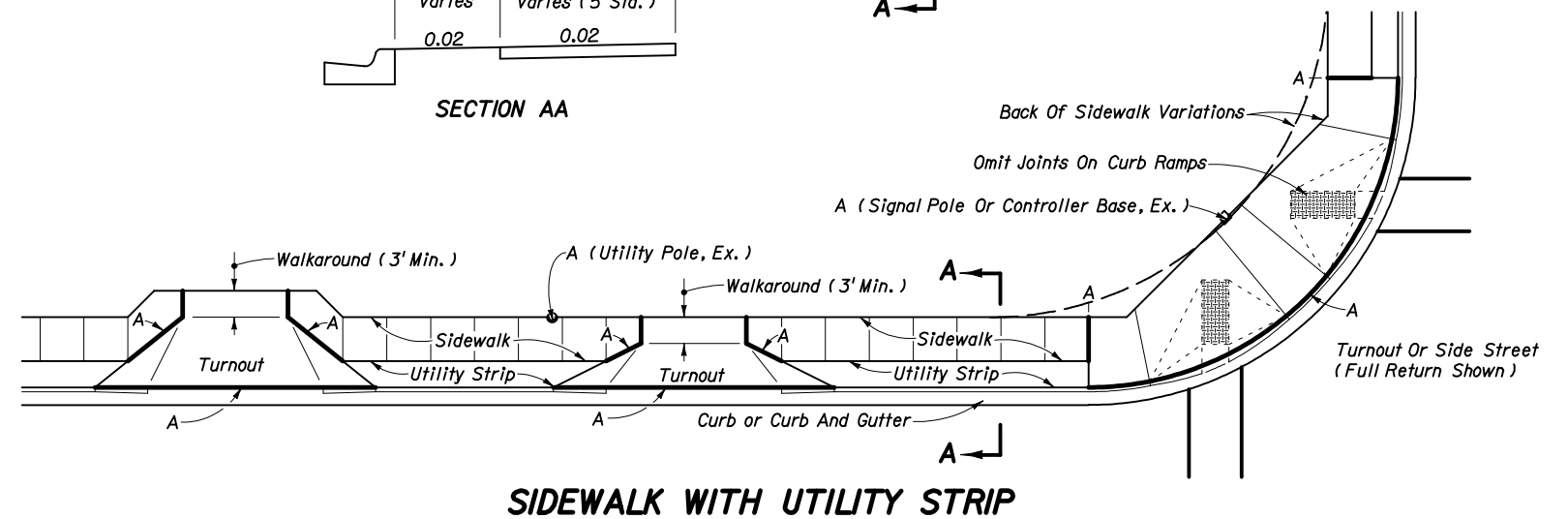
- A- $\frac{1}{2}$ " Expansion Joints (Preformed Joint Filler)
- B- $\frac{1}{8}$ " Dummy Joints, Tooled
- C- $\frac{1}{8}$ " Formed Open Joints
- D- $\frac{1}{8}$ " Saw Cut Joints, $1\frac{1}{2}$ " Deep (96 Hour) Max. 5' Centers
- E- $\frac{1}{8}$ " Saw Cut Joints, $1\frac{1}{2}$ " Deep (12 Hour) Max. 30' Centers
- F- $\frac{1}{2}$ " Expansion Joint When Run Of Sidewalk Exceeds 120'.
Intermediate locations when called for in the plans or at locations as directed by the Engineer.
- G- Cold Joint With Bond Breaker, Tooled

NOTES FOR CONCRETE SIDEWALK ON CURBED ROADWAYS

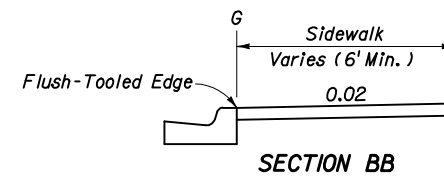
1. Sidewalks shall be constructed in accordance with Section 522 of the FDOT Standard Specifications except for public sidewalk curb ramp runs which shall be finished in accordance with Index No. 304.
2. Bond breaker material can be any impermeable coated or sheet membrane or preformed material having a thickness of not less than 6 mils nor more than $\frac{1}{2}$ ".
3. For public sidewalk curb ramps see Index No. 304.
4. For turnouts see Index No. 515.
5. Sidewalk shall be paid for under the contract unit price for Sidewalk Concrete (___ Thick), S.Y.



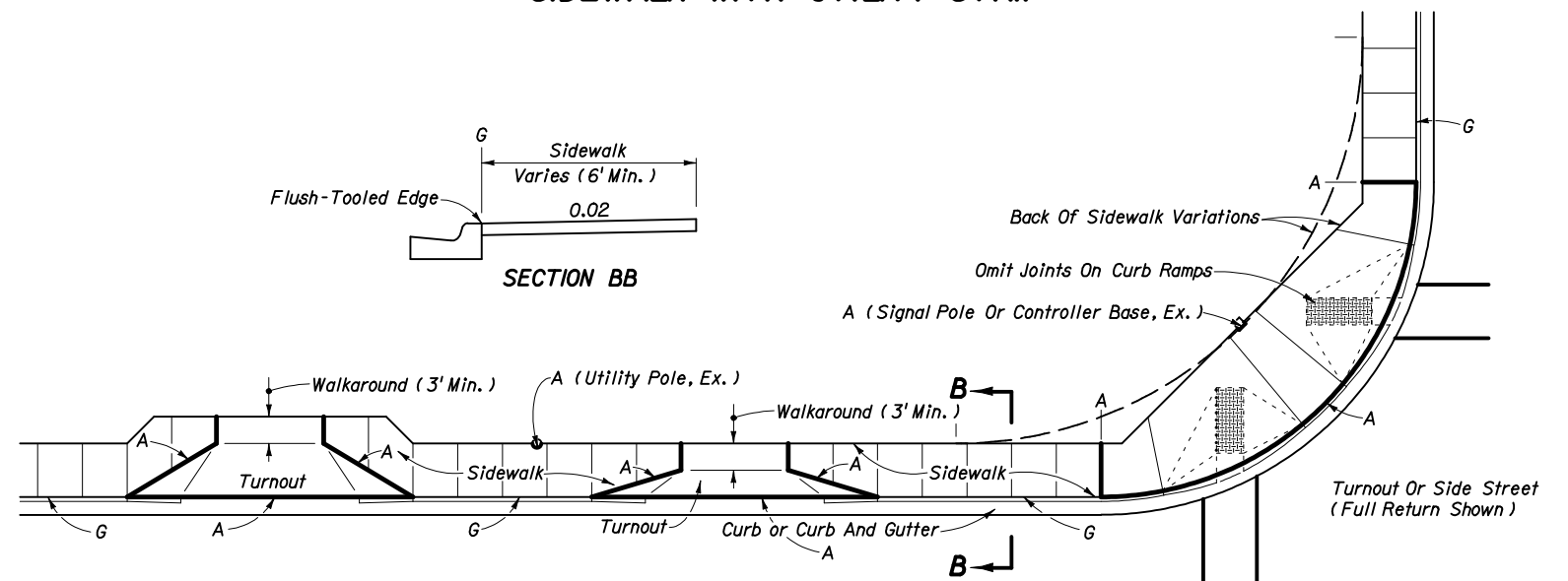
SECTION AA



SIDEWALK WITH UTILITY STRIP



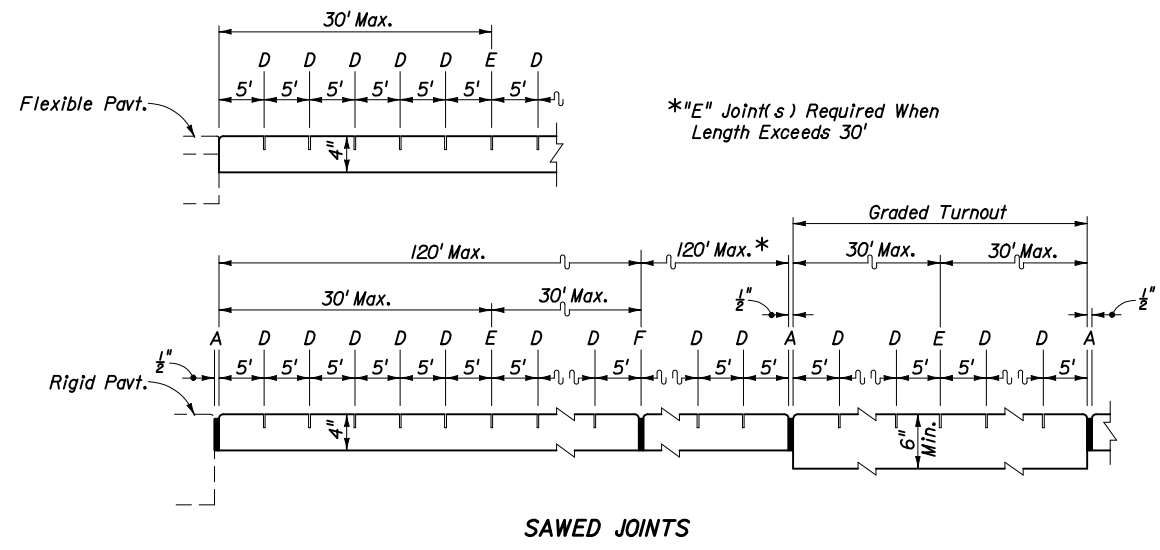
SECTION BB



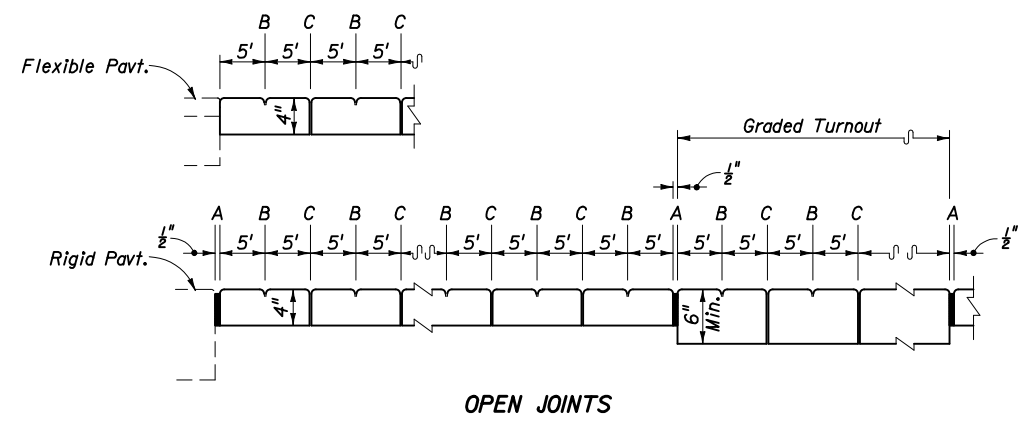
SIDEWALK WITHOUT UTILITY STRIP

STATE OF FLORIDA DEPARTMENT OF TRANSPORTATION				
CONCRETE SIDEWALK				
Designed By	SPBCS	Dates	Approved By <i>Brian Blankenship</i> State Roadway Design Engineer	
Drawn By	HKH	11/93	Revision	Sheet No. Index No.
Checked By	JVG	11/93	00	1 of 2 310

CONCRETE SIDEWALK FOR CURBED ROADWAYS



*"E" Joint(s) Required When Length Exceeds 30'



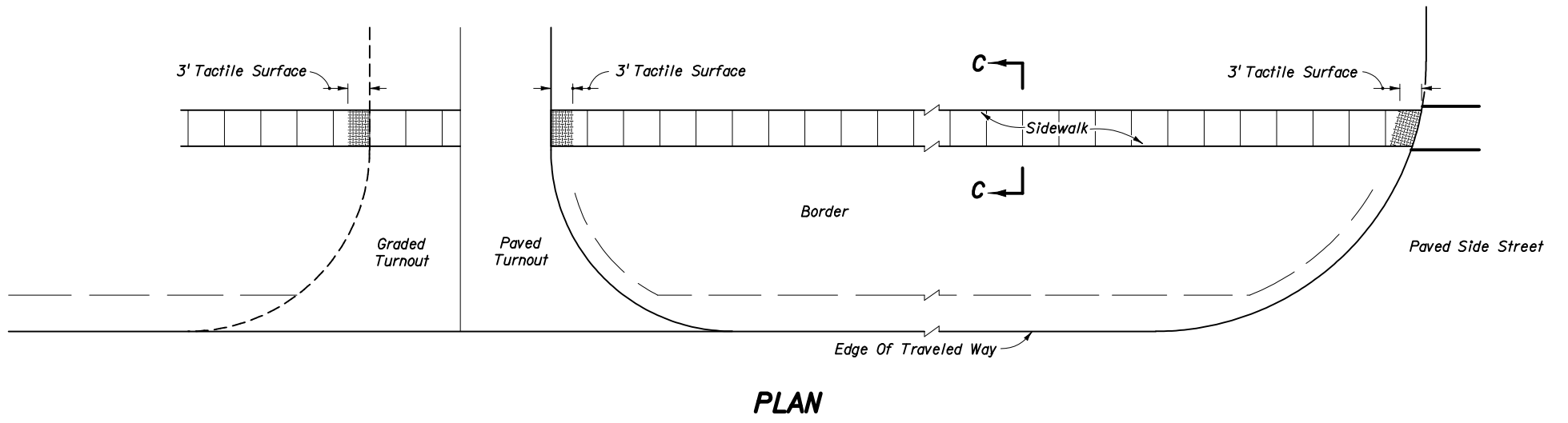
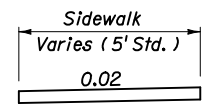
EXAGGERATED SCALE
**LONGITUDINAL SECTIONS
SIDEWALK JOINTS**

JOINT LEGEND

- A- 1/2" Expansion Joints (Preformed Joint Filler)
- B- 1/8" Dummy Joints, Tooled
- C- 1/8" Formed Open Joints
- D- 3/16" Saw Cut Joints, 1 1/2" Deep (96 Hour) Max. 5' Centers
- E- 3/16" Saw Cut Joints, 1 1/2" Deep (12 Hour) Max. 30' Centers
- F- 1/2" Expansion Joint When Run Of Sidewalk Exceeds 120'. Intermediate locations when called for in the plans or at locations as directed by the Engineer.

NOTES FOR CONCRETE SIDEWALKS ON UNCURBED ROADWAYS

1. Sidewalks shall be constructed in accordance with Section 522 of the FDOT Standard Specifications.
2. Sidewalks crossing streets and driveways shall have a tactile surface for a minimum of 3' adjacent to each crossing. Tactile surfaces shall conform to the requirements described in the General Notes on Index No. 304.
3. For turnouts see Index No. 515.
4. Sidewalk shall be paid for under the contract unit price for Sidewalk Concrete (____ Thick), SY.



STATE OF FLORIDA DEPARTMENT OF TRANSPORTATION

CONCRETE SIDEWALK

Names		Dates		Approved By	
Designed By	SPBCS			 State Roadway Design Engineer	
Drawn By	HKH	4/99			
Checked By	JVG	4/99		Revision	00
				Sheet No.	2 of 2
				Index No.	310

CONCRETE SIDEWALKS FOR UNCURBED ROADWAYS