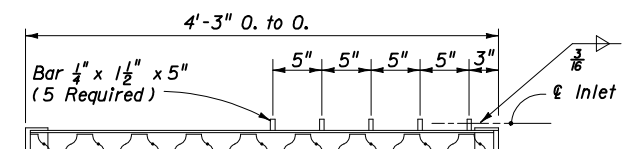


NOTE: Alt. B Structure Bottom Only. See Index No. 200 for structure bottom details and hole reinforcement. (For Pipes 30" Dia. And Larger)

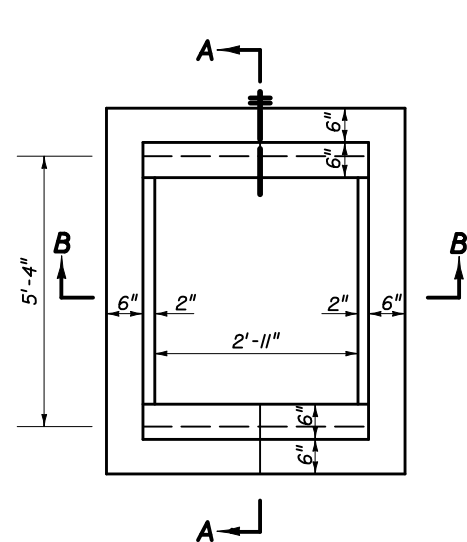
**INLET WITH STRUCTURE BOTTOM**

**GENERAL NOTES**

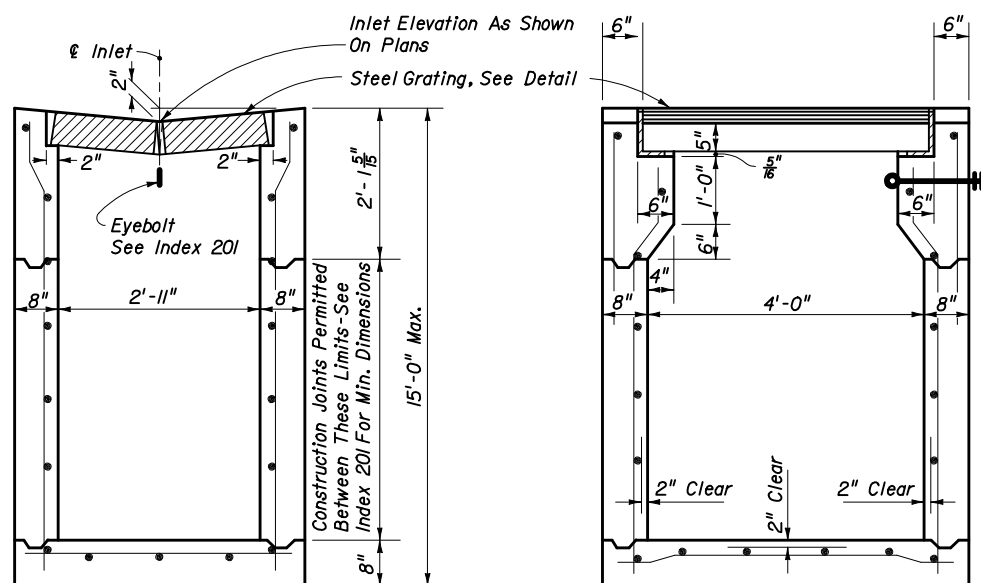
1. This inlet is designed for village swales, ditches, or other areas subject to heavy wheel loads, minimum debris and subject to pedestrian and/or bicycle traffic.
2. When alternate "G" grate is specified in plans, the grate is to be hot dipped galvanized after fabrication.
3. Reinforcing - #4 bars at 12" ctrs. both ways. Cut or bend bars out of way of pipe to clear pipe 1/2".
4. All exposed edges and corners shall be tooled to 1/4" radius.
5. Recommended maximum pipe sizes shown are for concrete pipe.
6. For supplementary details see Index No. 201.



**OPTIONAL BAR SPACING**



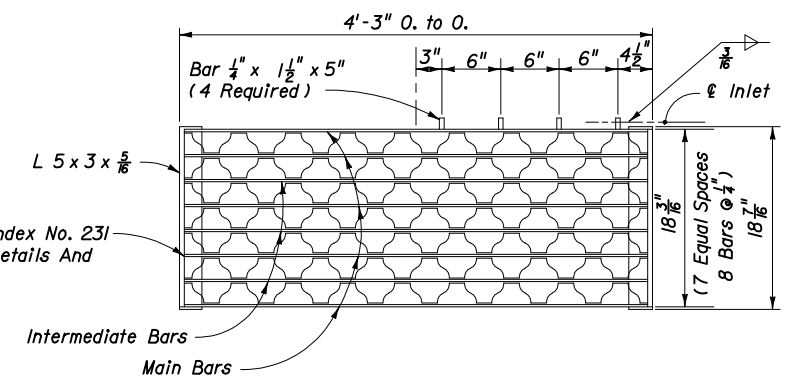
**PLAN**



**SECTION BB**

**SECTION AA**

Recommended Maximum Pipe Size:  
2'-11" Wall - 24" Size  
4'-0" Wall - 30" Size



**STEEL GRATE**

TWO REQUIRED PER INLET  
5" Steel Grate Main Bars 5" x 1/4"  
Intermediate Bars 1 1/2" x 1/4" Reticuline Bars 1 1/4" x 3/8"  
Steel Grate : Manufactured By Borden, Florida Steel, U.S. Foundry Irving, Reliance, Greulich ( Or Equal ).

STATE OF FLORIDA DEPARTMENT OF TRANSPORTATION				
<b>GUTTER INLET TYPE V</b>				
Names	Dates	Approved By <i>S. A. McHenry</i>		
Designed By		State Drainage Engineer		
Drawn By	WHW 4/57	Revision	Sheet No.	Index No.
Checked By	RMM 4/57	02	1 of 1	221