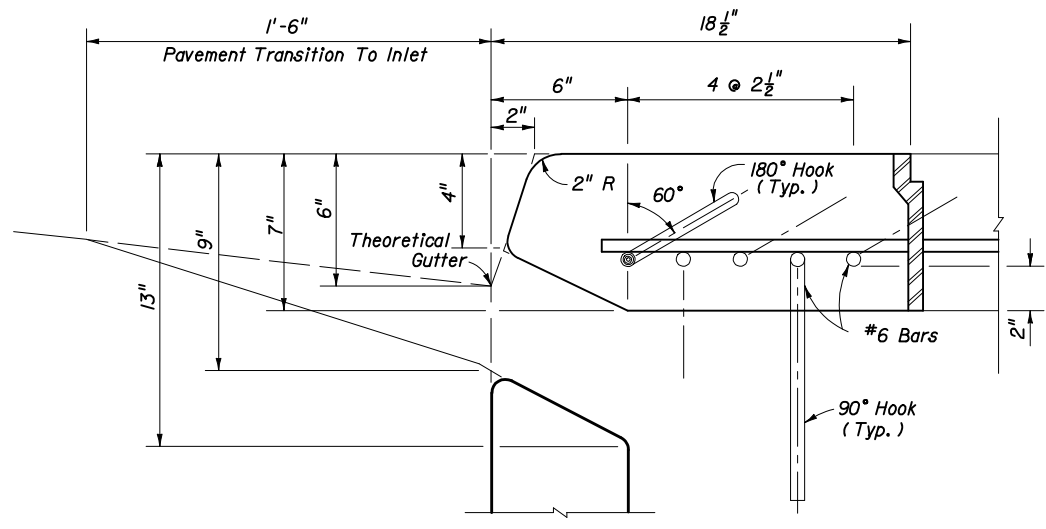
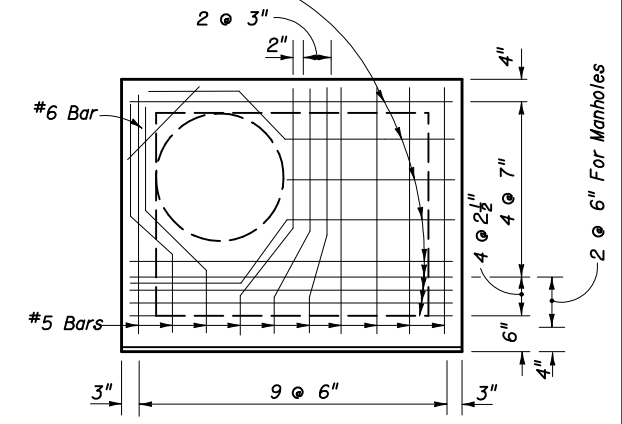


**PLAN**

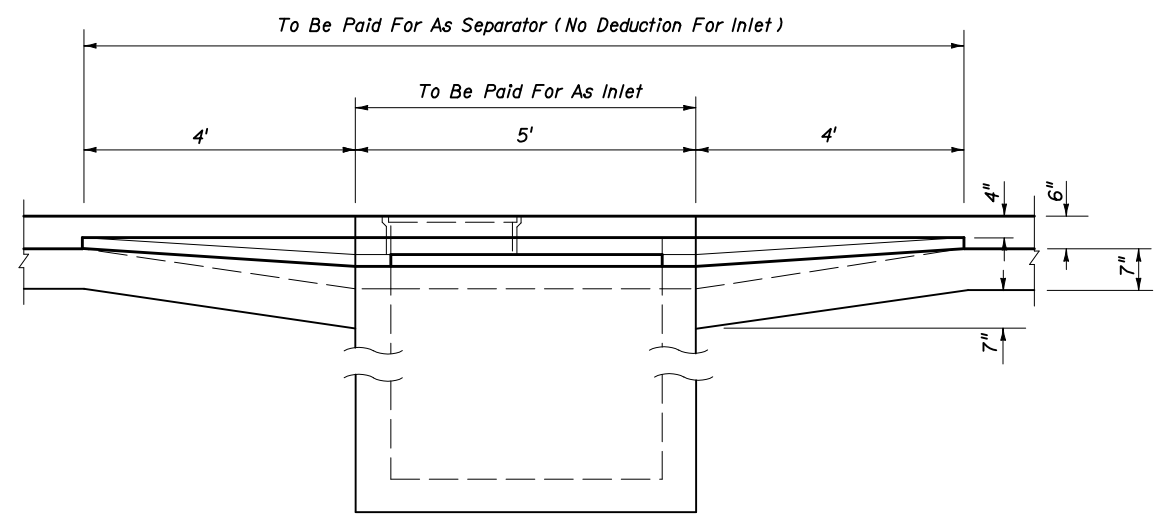


**THROAT DETAIL (SECTION AA)**

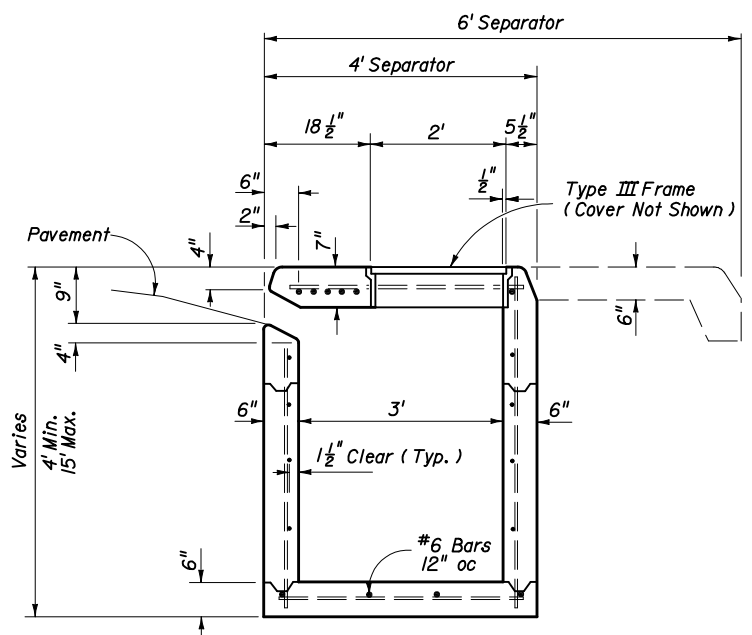
#6 Bars  
 ACI Std. Hooks Required Each End Of  
 Straight Bars And Right End Of Bent  
 Bars. 180° Hooks, Canted 60° (+), On Odd  
 Bars; 90° Hooks, Down, On Even Bars  
 Numbered From Throat Side.



**REINFORCING STEEL DIAGRAM  
 TOP SLAB OF INLET**

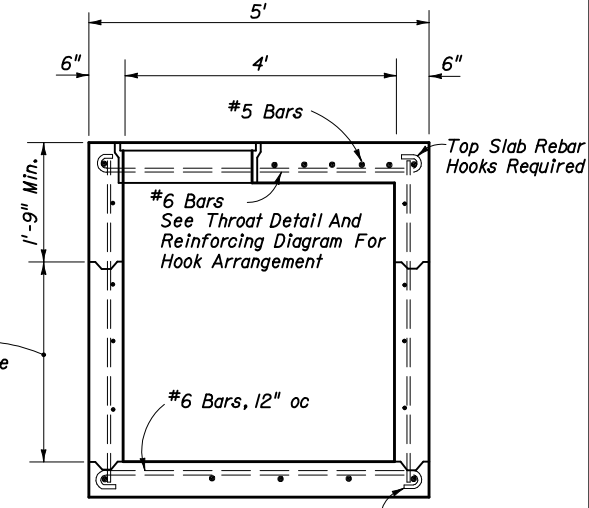


**SECTION CC**



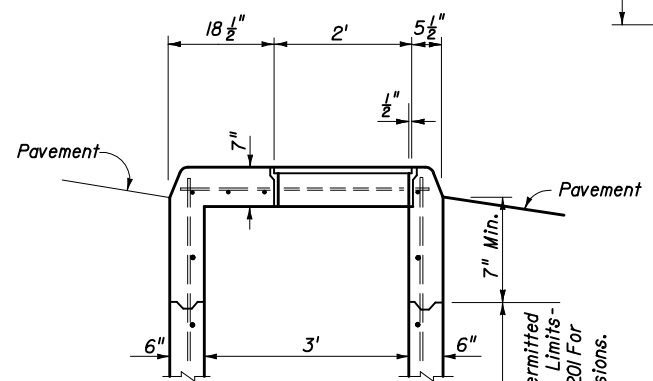
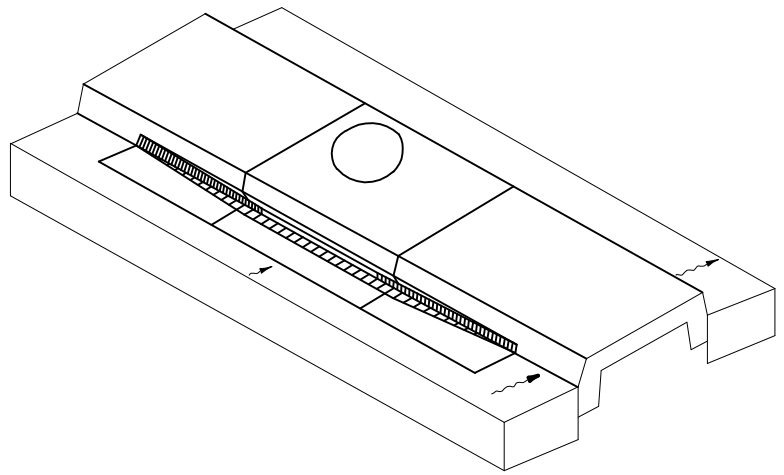
**SECTION AA**

Const. Joints Permitted  
 Between These Limits - See  
 Index No. 201 For Minimum  
 Dimensions.



**SECTION BB**

For Bottom Slab  
 Rebar Embedment  
 Options See Optional  
 Construction Joints,  
 Index No. 201.



**MODIFICATION WHEN USED  
 AS A MANHOLE**

Const. Joints Permitted  
 Between These Limits -  
 See Index No. 201 For  
 Minimum Dimensions.

**GENERAL NOTES**

1. This inlet is to be used only in Traffic Separators Types IV and V; or, in separators constructed with Curbs Types D and F and sidewalk paving, which cannot accommodate Inlets Types 1, 2, 3, 4, 5 or 6. Use of this inlet on the through traffic side of the separator should be avoided in medians constructed with Curb Type D (Curb inlets Types 9 or 10 are recommended). Locate inlet outside of pedestrian cross traffic.
2. Reinforcing - #4 bars at 12" centers unless otherwise noted. Cut or bend bars out of way of pipe when necessary. Bars to clear pipe by 1/2".
3. Recommended maximum pipe sizes are 24" longitudinal and 30" transverse. For larger pipe, inlets with Alt. B bottoms, Index No. 200 are recommended.
4. For supplemental details see Index No. 201.
5. Inlet to be paid for under the contract unit price for Inlets (Curb) (Type 8), Each.

STATE OF FLORIDA DEPARTMENT OF TRANSPORTATION

**CURB INLET  
 TYPE 8**

Names	Dates	Approved By		
Designed By	EGR 07/81	 State Drainage Engineer		
Drawn By	HSD 07/81			
Checked By	JG 07/81	Revision	Sheet No.	Index No.
		00	1 of 1	213