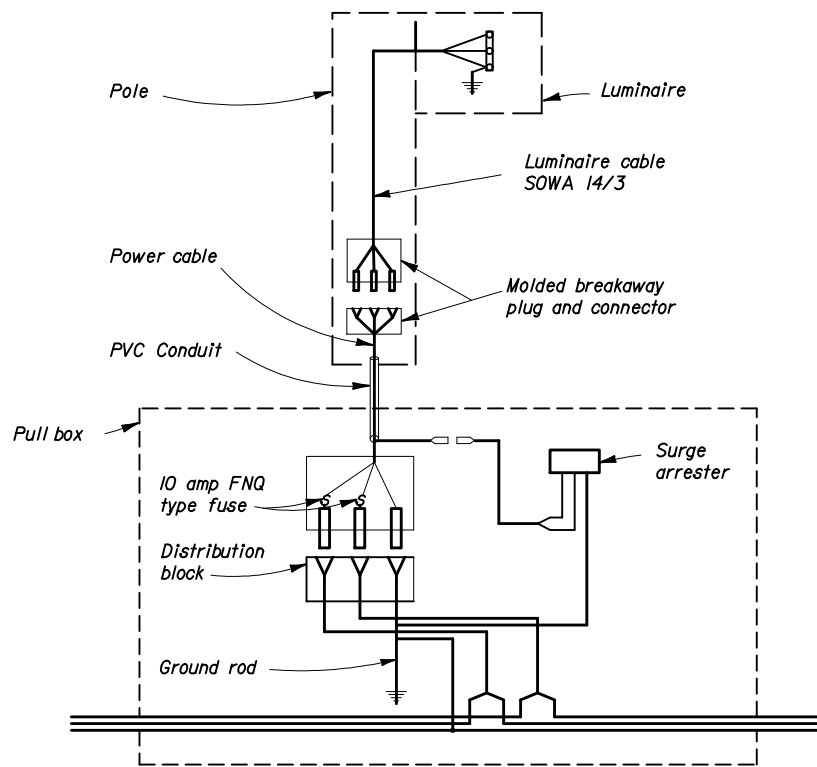
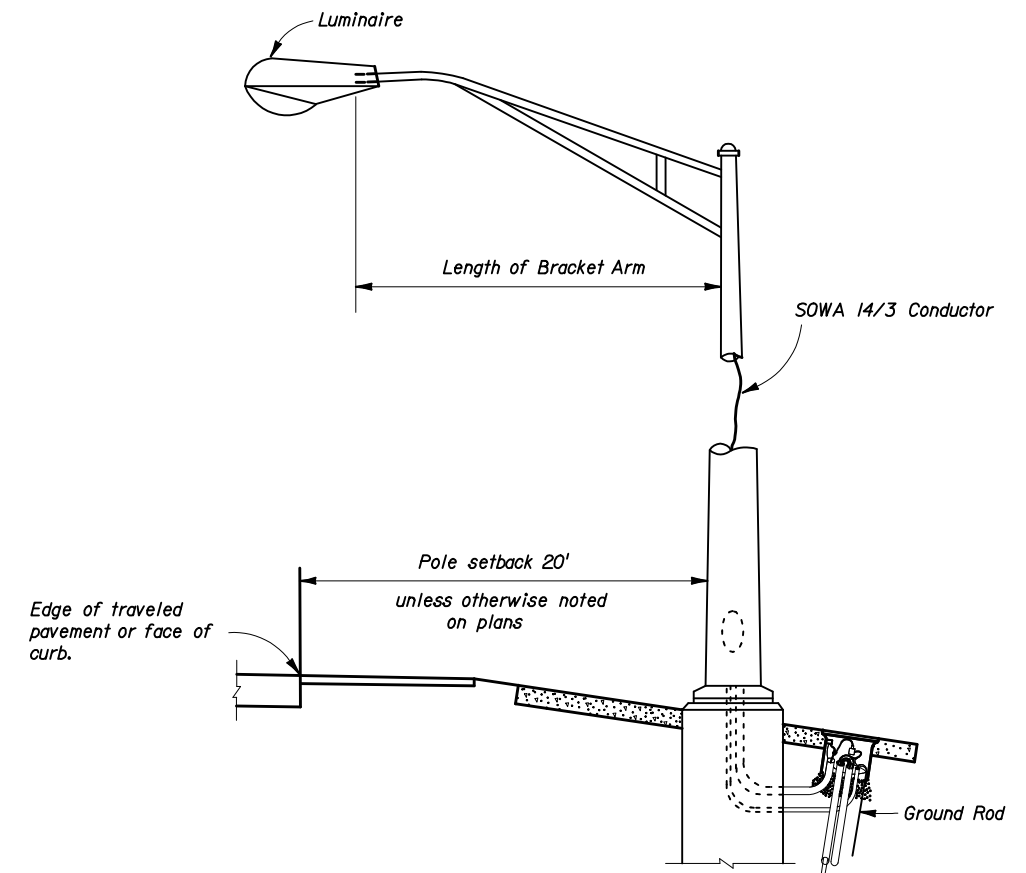


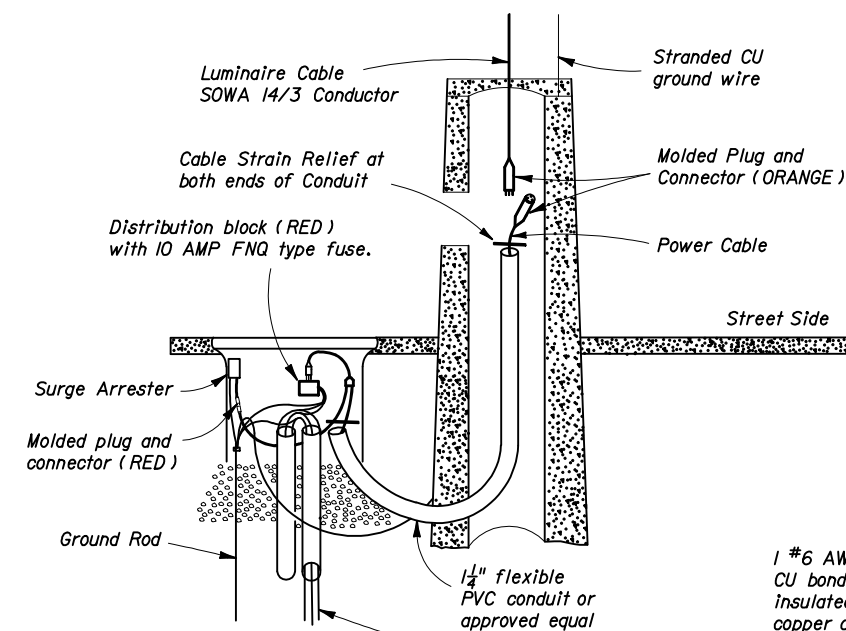
CONCRETE POLE DETAIL



WIRING DIAGRAM

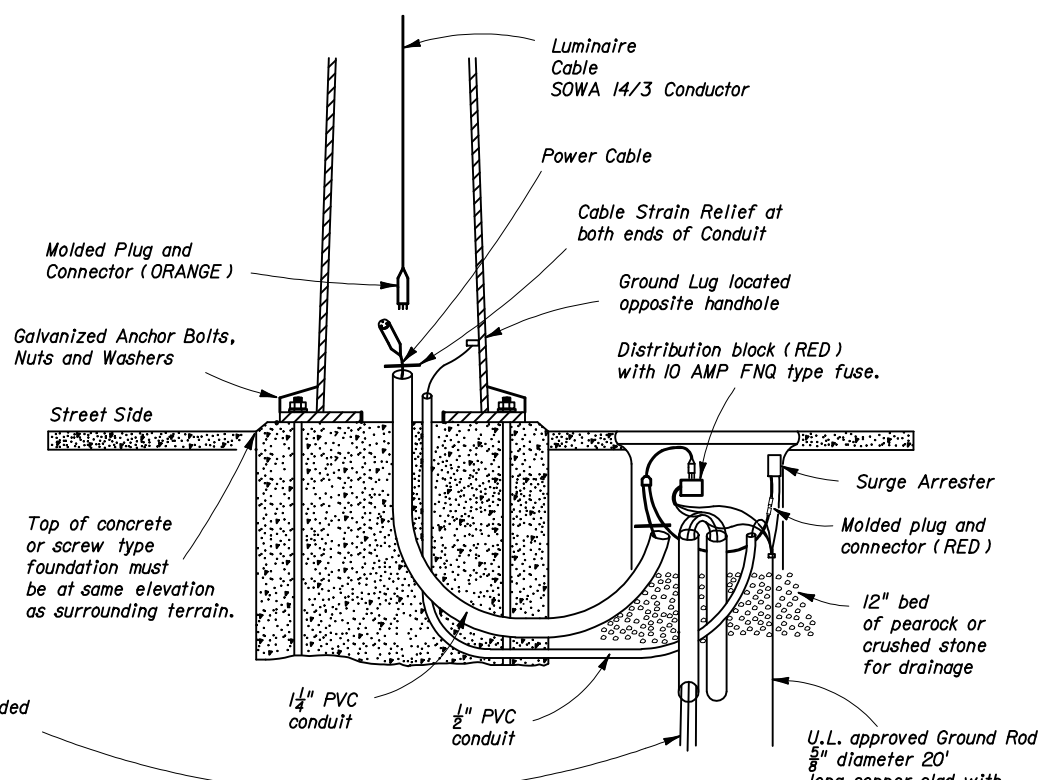


METAL POLE DETAIL



CONCRETE POLE WIRING DETAIL

1 #6 AWG insulated (TW Green) stranded CU bond wire connecting all poles, and insulated (THW or THWN) stranded copper circuit conductors in schedule 40 PVC conduit. Circuit conductors and conduit size as shown in plans. (Typical)



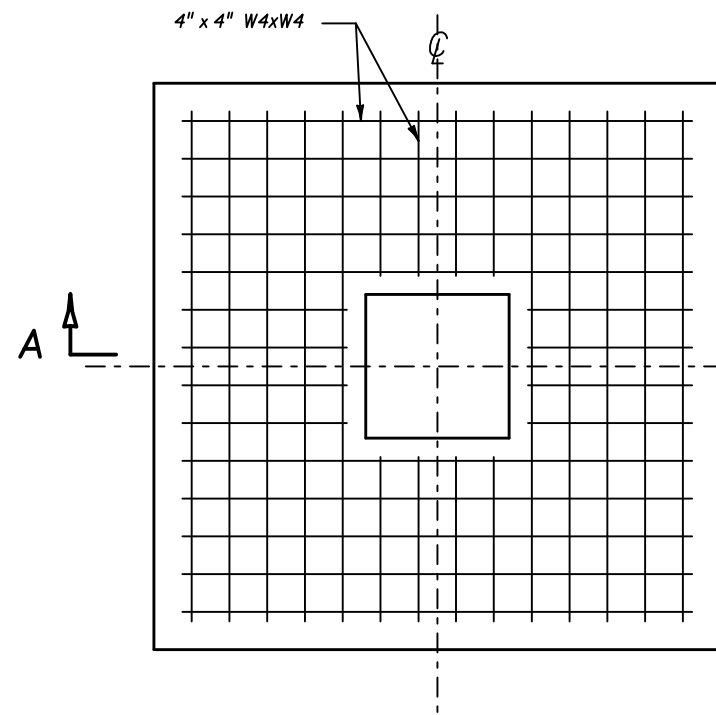
METAL POLE WIRING DETAIL

NOTES:

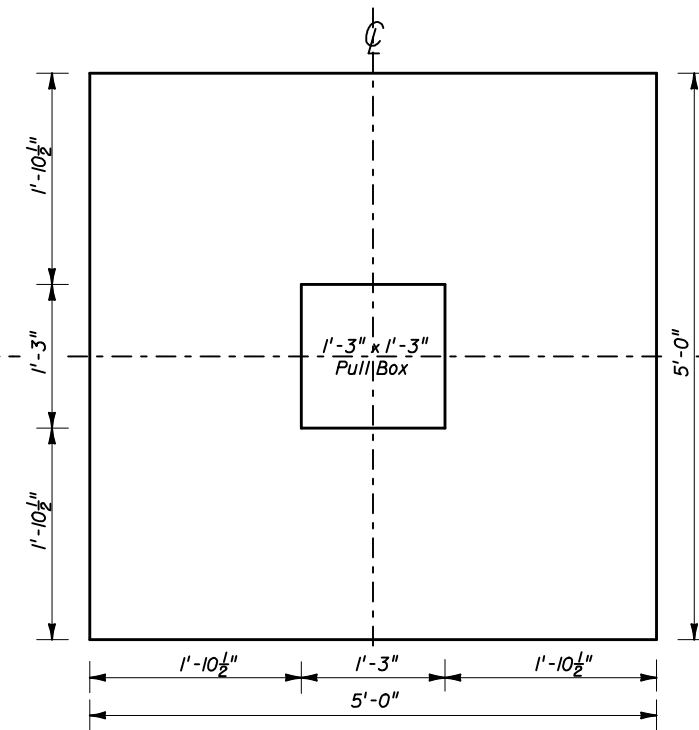
1. The Duraline Division of the J.B. Nottingham Company (Duraline) claims exclusive rights to the wiring diagram illustrated in this drawing under U. S. Patent 5,335,160. Any infringement on the rights claimed by Duraline shall be the sole responsibility of the contractor or supplier infringing on the rights of Duraline.
2. Barrier wall or bridge mounted poles: The wiring shall be in accordance with Section 992 of the Standard Specifications.

LIGHTING POLE DETAILS

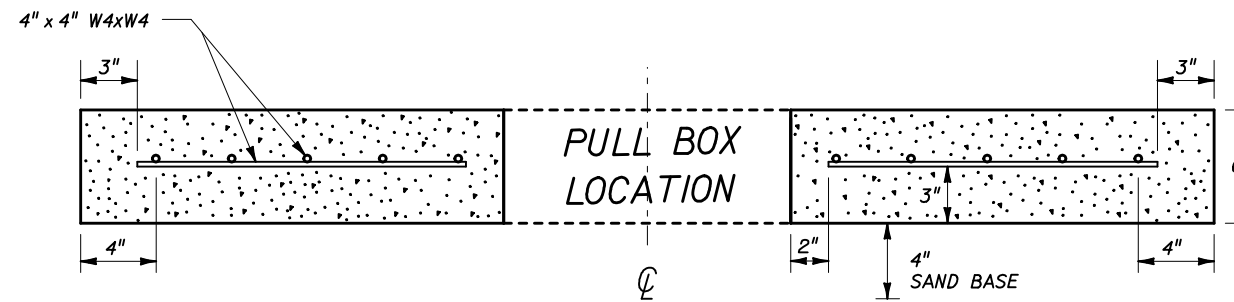
STATE OF FLORIDA DEPARTMENT OF TRANSPORTATION				
CONVENTIONAL LIGHTING				
Designed By	Names	Dates	Approved By	
Drawn By			<i>Charles A. Scott</i> State Traffic Standards Engineer	
Checked By			Revision	Sheet No. Index No.
			02	1 of 3 17500



REINFORCEMENT LAYOUT



SLAB DIMENSIONS



SECTION A-A

NOTES:

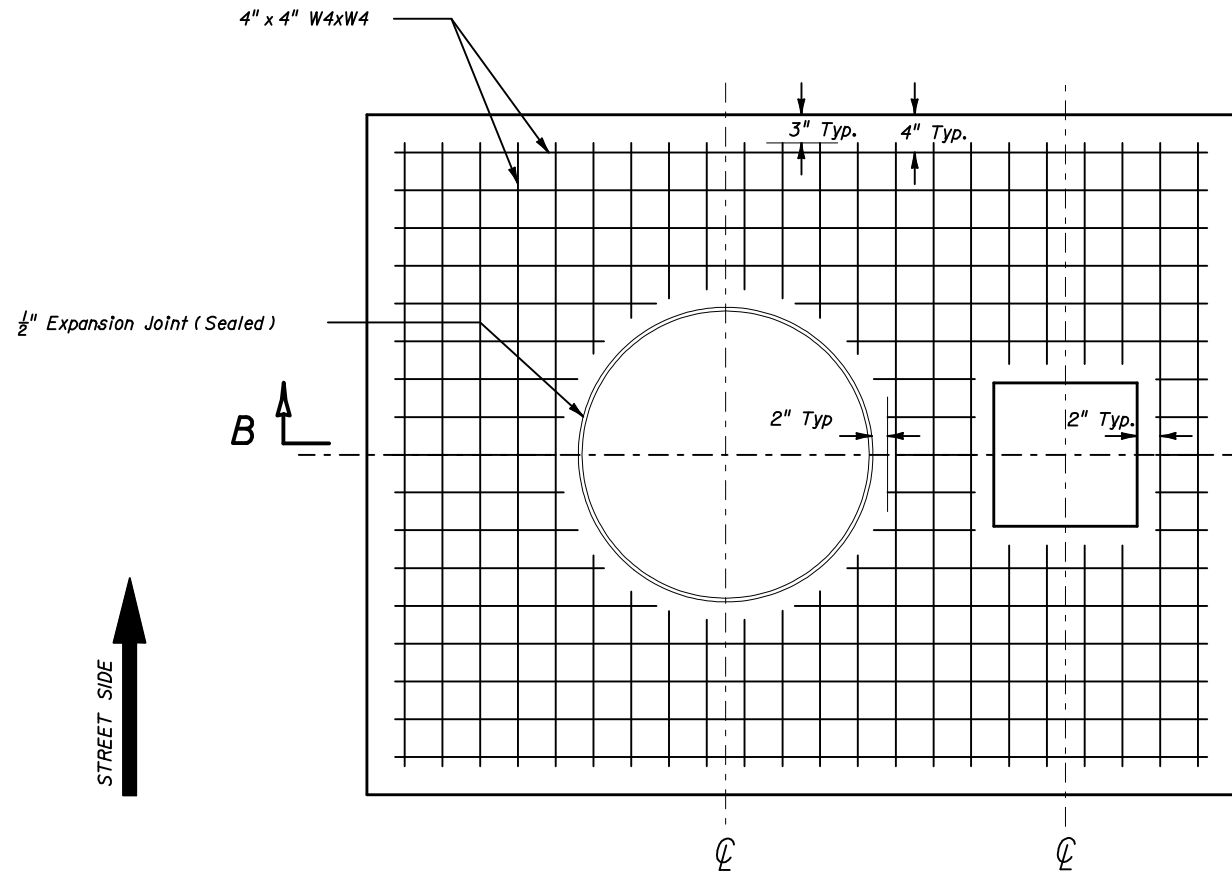
1. Use clean free draining sand < 5% passing No. 200 sieve for base.
2. Welded wire fabric shall meet the requirements of ASTM A185.
3. Concrete strength at 28 days shall be $f'c = 3$ ksi
4. Outside edges of slab shall be cast against formwork.
5. The pull box shown is 1'-3" x 1'-3"; others approved under Section 635 of the Standard Specifications may be used.

LIGHTING GENERAL NOTES AND SLAB DETAILS FOR PULLBOX LOCATIONS

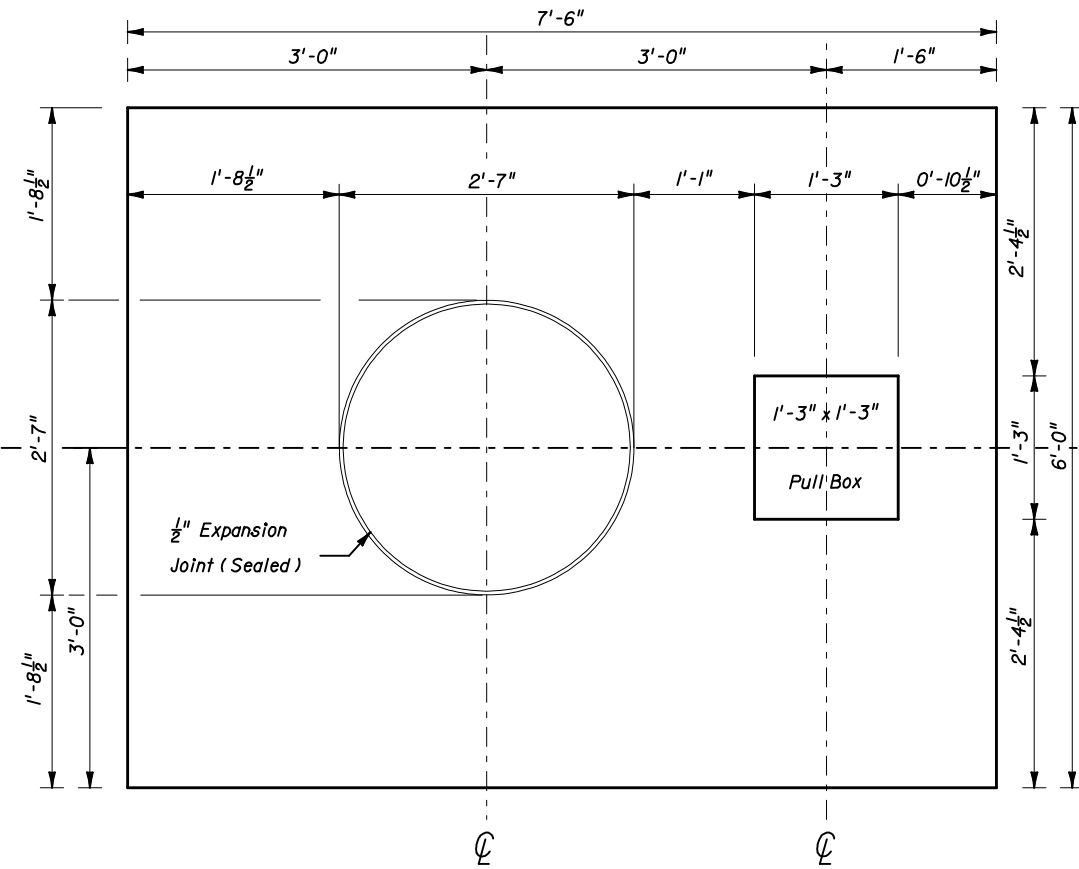
STATE OF FLORIDA DEPARTMENT OF TRANSPORTATION

CONVENTIONAL LIGHTING

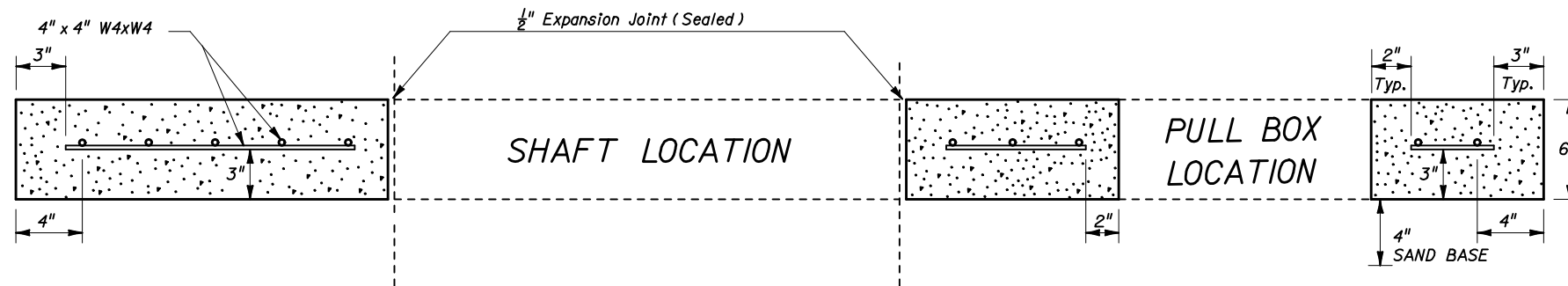
Names	Dates	Approved By <i>Charles A. Scott</i>		
Designed By		State Traffic Standards Engineer		
Drawn By		Revision	Sheet No.	Index No.
Checked By		00	2 of 3	17500



REINFORCEMENT LAYOUT



SLAB DIMENSIONS



SECTION B-B

NOTES:

1. Use clean free draining sand < 5% passing No. 200 sieve for base (4").
2. Welded wire fabric shall meet the requirements of ASTM A185.
3. Concrete strength at 28 days shall be $f'c = 3$ ksi.
4. Outside edges of slab shall be cast against formwork.

5. The $\frac{1}{2}$ " thick expansion joint between shaft and slab shall be sealed with a hot poured elastic joint sealer.
6. Slabs to be placed around all Poles and Pull Boxes in rural locations. In urban areas or where space is limited slab dimensions may be adjusted as shown in the plans.
7. The pull box shown is 1'-3" x 1'-3"; others approved under Section 635 of the Standard Specifications may be used.

SLAB DETAILS FOR POLE AND PULL BOX LOCATIONS

STATE OF FLORIDA DEPARTMENT OF TRANSPORTATION

CONVENTIONAL LIGHTING

Names	Dates	Approved By <i>Charles A. Scott</i>		
Designed By		State Traffic Standards Engineer		
Drawn By		Revision	Sheet No.	Index No.
Checked By		00	3 of 3	17500