

FIGURE A
POLE MOUNTED
DETECTOR STATION

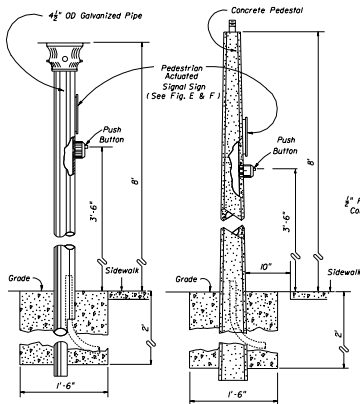


FIGURE B
PEDESTAL STATION
DETECTOR STATION

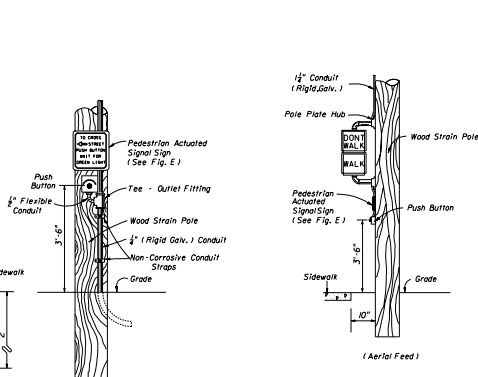


FIGURE C
WOOD POLE MOUNTED
DETECTOR STATION

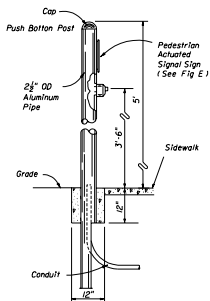


FIGURE D
POST DETECTOR STATION
DETECTOR STATION

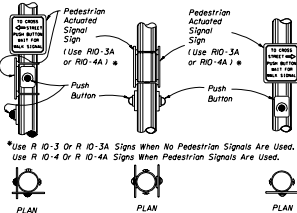


FIGURE E

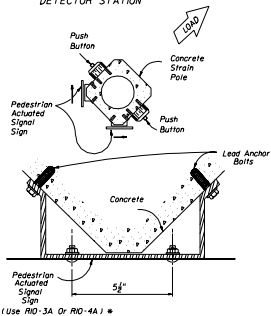


FIGURE F

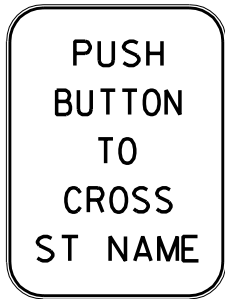
Notes:

- 1 Signs (RIO-3A & RIO-4A) shall be mounted above detectors, explaining their purpose and use.
- 2 The positioning of pedestrian push button should clearly indicate which cross-walk signal is actuated by each push button.
- 3 Push buttons and signs are to be mounted in accordance with Standard Specifications, section 665.
- 4 Meet all grounding requirements of Section 620 of the Standard Specifications.

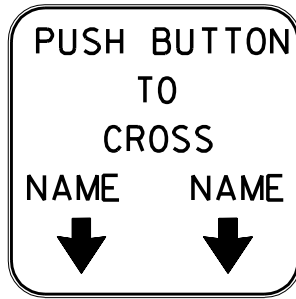
STATE OF FLORIDA DEPARTMENT OF TRANSPORTATION
TRAFFIC DESIGN

**PEDESTRIAN DETECTOR
ASSEMBLY INSTALLATION
DETAILS**

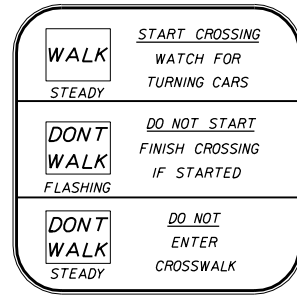
| | | | |
|-------------|------|-------------|--------|
| DESIGNED BY | DATE | APPROVED BY | |
| DRAWN BY | | SCALE | DATE |
| CHECKED BY | | NO. | 1 of 2 |



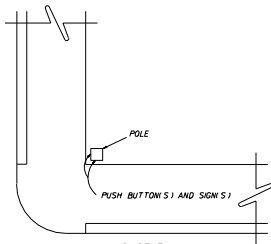
FTP-47



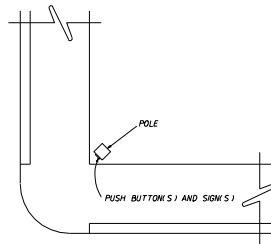
FTP-48



FTP-49



CASE I
POLE PARALLEL TO CURBLINE
ALTERNATE TO FIGURE F



CASE II
POLE DIAGONAL TO CURBLINE

WHITE BACKGROUND WITH BLACK LEGEND AND BORDER
WALK PLAQUE - WHITE LEGEND ON BLACK BACKGROUND
DONT WALK PLAQUE - ORANGE LEGEND ON BLACK BACKGROUND
THE INTERNATIONAL SYMBOLS MAY BE USED FOR WALK AND DONT WALK.

Note:
1. See index I7355 for sign details.

| STATE OF FLORIDA DEPARTMENT OF TRANSPORTATION TRAFFIC DESIGN | | | | | |
|---|------|-----------------------------|--------|-------|--------------|
| PEDESTRIAN DETECTOR ASSEMBLY INSTALLATION DETAILS | | | | | |
| DESIGNED BY | DATE | APPROVED BY | DATE | SCALE | REVISION NO. |
| | | <i>Charles A. Smith</i> | | | |
| DRAWN BY | | STATE TRAFFIC DESIGN CENTER | | | |
| CHECKED BY | | 00 | 2 of 2 | 17784 | |