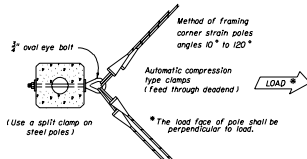


Notes:

1. With the approval of the resident engineer, the service head hole for joint use poles may be drilled by the utility company at an angle of 90° but not less than 45° to the face of the pole.
2. Lashing wire should normally be used for distances of 12' or greater.
3. The overlapped connection of adjustable hangers shall use a minimum of 2 bolts with a minimum spacing of 2" between bolts.
4. Meet all grounding requirements of Section 620 of the Standard Specifications.

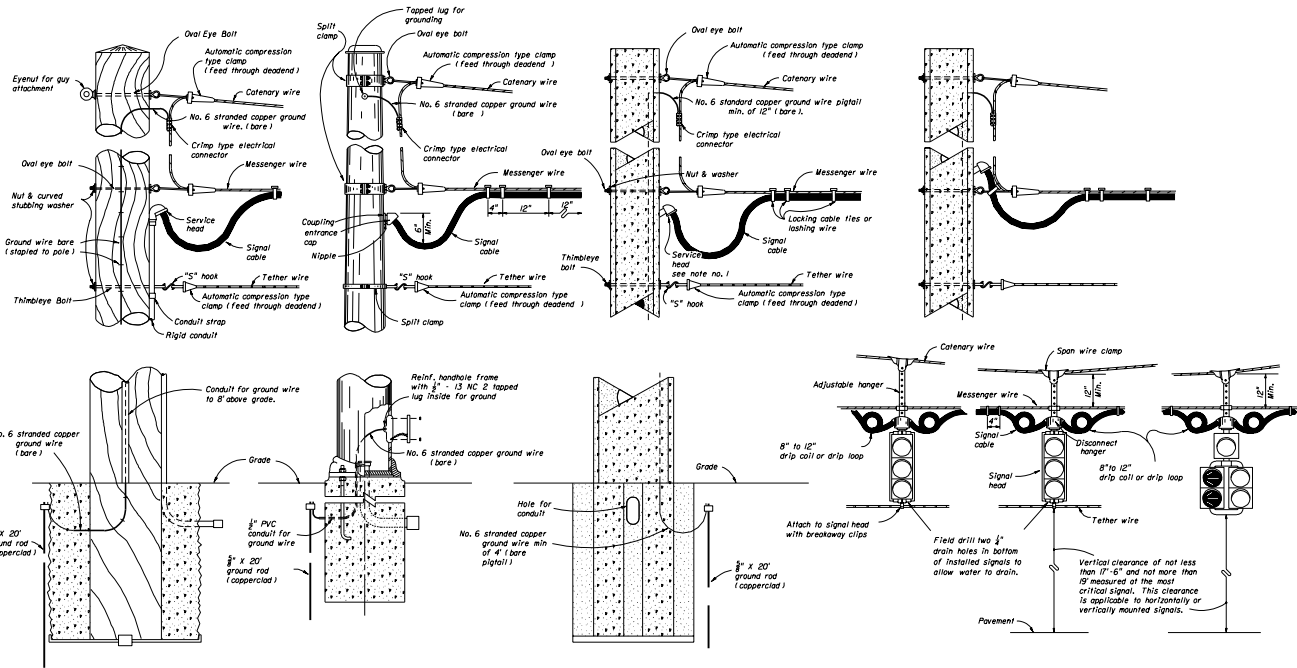


SINGLE POINT ATTACHMENT

STATE OF FLORIDA DEPARTMENT OF TRANSPORTATION
TRAFFIC DESIGN

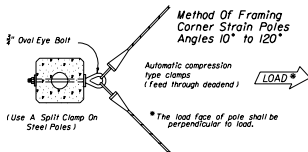
**SIGNAL CABLE & SPAN WIRE
INSTALLATION DETAILS**

Designed By	Checked By	Approved By	<i>Charles A. Smith</i>
Drawn By	DATE	SCALE	STATION
Checked By	00	1 of 2	17727



Notes

1. With the approval of the resident engineer, The service head hole for joint use poles may be drilled by the utility company at an angle of 90° but not less than 45° to the face of the pole.
2. Lashing wire should normally be used for distances of 12' or greater.
3. The overlapped connection of adjustable hangers shall use a minimum of 2 bolts with a minimum spacing of 2" between bolts.
4. Meet all grounding requirements of Section 620 of the Standard Specifications.



TWO POINT ATTACHMENT

STATE OF FLORIDA DEPARTMENT OF TRANSPORTATION
TRAFFIC DESIGN

**SIGNAL CABLE & SPAN WIRE
INSTALLATION DETAILS**

Revised By	Drawn By	Checked By	Approved By
			<i>Clark A. Smith</i>
DATE	DATE	DATE	DATE
ISSUED BY	DATE	NO.	REV.
00	2 of 2	17727	