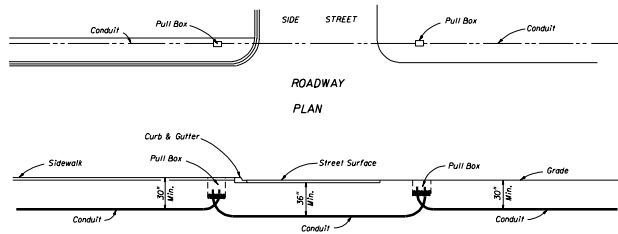


PULL BOX ENTRY OF CONDUIT UNDER SIDEWALKS

FIGURE A



UNDER SIDEWALK

UNDER ROADWAY

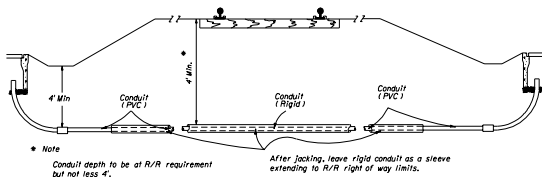
UNDER NON-TRAFFIC BEARING SURFACE

SECTION

FIGURE B

Note:
Ends of conduit shall be sealed in accordance with Section 630 of the Standard Specifications for Road and Bridge Construction.

Note:
One run of conduit (between pull boxes) shall not contain more than 360° of bend including pull box bends.



Note
Conduit depth to be at R/R requirement but not less 4'.

After jacking, leave rigid conduit as a sleeve extending to R/R right of way limits.

FOR USE UNDER RAILROADS

FIGURE C

STATE OF FLORIDA DEPARTMENT OF TRANSPORTATION
TRAFFIC DESIGN

CONDUIT INSTALLATIONS
DETAILS

Designed By	Checked By	Date	Approved By
			<i>Charles Scott</i>
Drawn By	Scale	Sheet No.	Project No.
		00	17721
Checked By		2 of 2	