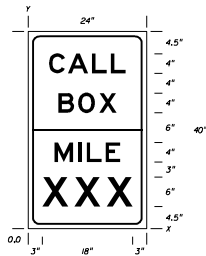
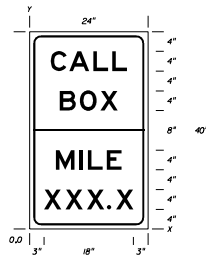


SEE SHEET 2 OF 2 FOR CONCRETE PAD DETAILS.

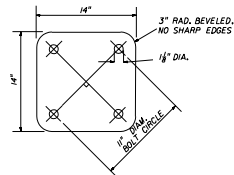
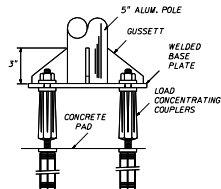
TYPICAL MOTORIST AID CALL BOX TERMINAL



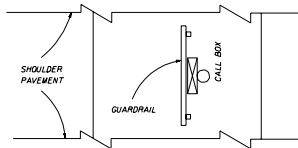
SIGN A



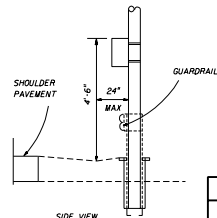
SIGN B



BASE PLATE & BOLT PATTERN



PLAN VIEW



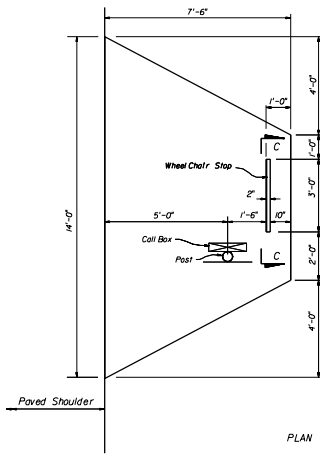
SIDE VIEW

TERMINALS

STATE OF FLORIDA DEPARTMENT OF TRANSPORTATION
TRAFFIC DESIGN

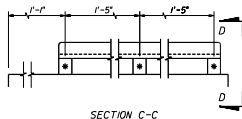
MOTORIST AID CALL BOX

Designed By	Checked	Drawn	Approved By
CSE	CSE	CSE	Charles A. Smith
Drawn By	Checked	Scale	Notes
CS	CSE		
Checked By	Date	Sheet	of
CSE	2-19	00	1 of 2



PLAN

Call Box Attachment To Slab
As Per Manufacturer's Recommendation.



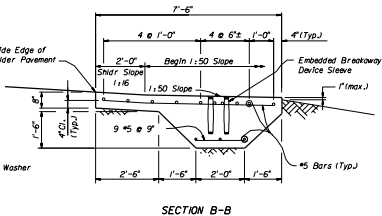
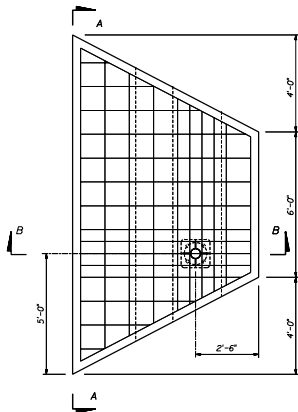
SECTION C-C

2" x 1" x 1/4" Gask. Angle And
3-3/8" Ø x 5' Galvanized Steel Expansion
Anchor Bolt With 3" Min. Embedment

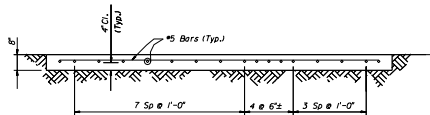
VIEW D-D

• 1 1/2" Ø x 1" High
Galvanized Steel Pipe Spacer

WHEEL CHAIR STOP DETAIL



SECTION B-B



SECTION A-A

MOTORIST AID CALL BOX CONCRETE PAD QUANTITIES

Concrete : 3.5 c.y. (each)
Reinforcing Steel : 243 lb. (each)

GENERAL NOTES

1. General Specifications: FDOT Standard Specifications for Road and Bridge Construction (Current Edition) and Supplements thereto.
2. Design Specifications: AASHTO Standard Specifications For Highway Bridges (Current Edition and approved revisions thereto).
3. Concrete: Concrete strength shall be Class II (F_c = 3,400 psi).
4. Reinforcing Steels: Reinforcing Steel shall conform to ASTM A65-96a, Grade 60.
5. Payment : Motorist Aid Call Box Concrete Pads shall be paid for under the contract unit price for Class II Concrete (Miscellaneous), c.y. and shall include all labor, materials, and installation of embedded breakaway device sleeves, and miscellaneous galvanized steel for wheel chair stop and attachments.
6. Breakaway Device shall be paid for under Call Box Assembly.

CONCRETE PAD

STATE OF FLORIDA DEPARTMENT OF TRANSPORTATION
ROAD DESIGN

MOTORIST AID CALL BOX

Designed By	Checked By	Approved By
5.07	5.16	<i>[Signature]</i>
Drawn By	Checked By	State Structures Detail Engineer
5.07	5.16	<i>[Signature]</i>
Checked By	5.07	5.16
	00	2 of 2
		17600