

SIGN IDENTIFICATION NUMBER	SIGN				TYPE OF SIGN BRACKET				SIGN IDENTIFICATION NUMBER	SIGN				TYPE OF SIGN BRACKET				
	PROFILE - SIZE		SQ. FT.		WIND ZONE					PROFILE - SIZE		SQ. FT.		WIND ZONE				
	60	70	80	90	60	70	80	90		60	70	80	90	60	70	80	90	
1		24 x 24	1.7	2-1	2-1	2-1	2-1	2-1	2-1	30		15 x 30	8.1	1-1	1-1	1-1	1-1	
2		30 x 30	2.7	2-1	2-1	2-1	2-1	2-1	2-1	31		15 x 21	9.7	1-1	1-1	1-1	1-1	
3		36 x 36	3.9	2-1	2-1	2-1	2-1	2-1	2-1	32		15 x 30	10.6	1-1	1-1	1-1	1-1	
4		48 x 48	6.9	1-1	1-1	1-1	1-1	1-1	1-1	33		12 x 24	8.2	1-1	1-1	1-1	1-1	
5		60 x 60	10.8	DO NOT USE SINGLE COLUMN							34		15 x 30	9.3	1-1	1-1	1-1	1-1
6		36 Ø	7.1	2-1	2-1	2-1	2-1	2-1	2-1	35		24 x 24	9.2	1-1	1-1	1-1	1-1	
7		48 Ø	12.6	2-1	2-1	2-1	2-1	2-1	2-1	36		15 x 30	10.3	1-1	1-1	1-1	1-1	
8		18 x 18	1.9	2-1	2-1	2-1	2-1	2-1	2-1	37		12 x 24, 12 x 24	15.6	1-1	1-1	1-1	1-1	
9		24 x 24	3.3	2-1	2-1	2-1	2-1	2-1	2-1	38		12 x 24, 12 x 24	15.2	1-1	1-1	1-1	1-1	
10		30 x 30	5.2	2-1	2-1	2-1	2-1	2-1	2-1	39		12 x 24, 12 x 24	16.4	1-1	1-1	1-1	1-1	
11		36 x 36	7.5	2-1	2-1	2-1	2-1	2-1	2-1	40		15 x 30, 15 x 30	19.2	DO NOT USE SINGLE COLUMN				
12		48 x 48	13.3	2-1	2-1	2-1	2-1	2-1	2-1	41		12 x 24, 12 x 24	20.4	1-1	1-1	1-1	1-1	
13		12 x 24	5.4	1-1	1-1	1-1	1-1	1-1	1-1	42		15 x 21	22.6	1-1	1-1	1-1	1-1	
14		15 x 30	6.5	1-1	1-1	1-1	1-1	1-1	1-1	43		12 x 24, 12 x 24	25.6	DO NOT USE SINGLE COLUMN				
15		12 x 24	6.3	1-1	1-1	1-1	1-1	1-1	1-1	44		18 x 12	1.5	1-1	1-1	1-1	1-1	
16		15 x 30	7.4	1-1	1-1	1-1	1-1	1-1	1-1	45		12 x 36	3.0	1-1	1-1	1-1	1-1	
17		15 x 30	10.8	1-1	1-1	1-1	1-1	1-1	1-1	46		18 x 24	3.0	2-1	2-1	2-1	2-1	
18		36 x 45	12.6	1-1	1-1	1-1	1-1	1-1	1-1	47		24 x 18	3.0	2-1	2-1	2-1	2-1	
19		15 x 30	16.7	1-1	1-1	1-1	1-1	1-1	1-1	48		18 x 18	3.0	2-1	2-1	2-1	2-1	
20		15 x 30	20.1	DO NOT USE SINGLE COLUMN							49		18 x 30	3.8	2-1	2-1	2-1	2-1
21		12 x 24	7.6	1-1	1-1	1-1	1-1	1-1	1-1	50		30 x 40	3.9	2-1	2-1	2-1	2-1	
22		15 x 30	8.7	1-1	1-1	1-1	1-1	1-1	1-1	51		24 x 24	4.0	2-1	2-1	2-1	2-1	
23		24 x 30	8.5	2-1	2-1	2-1	2-1	2-1	2-1	52		24 x 24	4.0	2-1	2-1	2-1	2-1	
24		15 x 30	9.6	1-1	1-1	1-1	1-1	1-1	1-1	53		18 x 36	4.5	2-1	2-1	2-1	2-1	
25		12 x 24	6.0	1-1	1-1	1-1	1-1	1-1	1-1	54		30 x 30	4.7	2-1	2-1	2-1	2-1	
26		24 x 24	6.2	2-1	2-1	2-1	2-1	2-1	2-1									
27		15 x 30	7.1	1-1	1-1	1-1	1-1	1-1	1-1									
28		12 x 24	7.0	1-1	1-1	1-1	1-1	1-1	1-1									
29		24 x 30	7.2	2-1	2-1	2-1	2-1	2-1	2-1									

55		30 x 24	5.0	2-1	2-1	2-1	2-1	2-1	2-1	56		36 x 48	5.6	2-II	2-II	2-II	2-II	
57		24 x 36	6.0	2-1	2-1	2-1	2-1	2-1	2-1	58		36 x 24	6.0	2-1	2-1	2-1	2-1	
59		30 x 30	6.3	2-1	2-1	2-1	2-1	2-1	2-1	60		30 x 30	6.3	2-1	2-1	2-1	3-1	
61		36 x 36	6.75	2-1	2-1	2-1	2-1	2-1	2-1	62		30 x 36	7.5	2-1	2-1	2-1	2-1	
63		36 x 30	7.5	2-1	2-1	2-1	2-1	2-1	2-1	64		24 x 48	8.0	2-II	2-II	2-II	2-II	
65		12 x 36	8.2	1-1	1-1	1-1	1-1	1-1	1-1	66		30 x 42	8.8	2-1	2-1	2-II	2-II	
67		36 x 36	9.0	2-1	2-1	2-1	2-1	2-1	2-1	68		36 x 36	9.0	2-1	2-1	2-1	2-1	
69		12 x 36	9.3	1-1	1-1	1-1	1-1	1-1	1-1	70		30 x 30	9.3	2-1	2-1	2-1	3-1	
71		48 x 64	9.9	DO NOT USE SINGLE COLUMN							72		30 x 48	10.0	2-II	2-II	2-II	2-II
73		12 x 36	10.5	1-1	1-1	1-1	1-1	1-1	1-1	74		30 x 54	11.3	DO NOT USE SINGLE COLUMN				
75		36 x 48	12.0	2-II	2-II	2-II	2-II	2-II	2-II	76		48 x 36	12.0	2-1	2-1	2-1	2-1	
77		36 x 36	12.0	2-1	2-1	2-1	2-1	2-1	2-1	77		18 x 24	12.0	2-1	2-1	2-1	2-1	
78		48 x 48	12.0	1-1	1-1	1-1	1-1	1-1	1-1	79		30 x 60	12.5	DO NOT USE SINGLE COLUMN				
80		48 x 48	16.0	2-1	2-1	2-1	2-1	2-1	2-1	81		48 x 48	16.0	2-1	2-1	2-1	2-1	
82		30 x 78	16.3	DO NOT USE SINGLE COLUMN							82		30 x 78	16.3	DO NOT USE SINGLE COLUMN			
83		30 x 84	17.5	DO NOT USE SINGLE COLUMN							84		48 x 54	18.0	DO NOT USE SINGLE COLUMN			
85		42 x 66	19.3	DO NOT USE SINGLE COLUMN							85		60 x 48	20.0	3-II	3-II	3-II	3-II
86		60 x 48	22.0	3-II	3-II	3-II	3-II	3-II	3-II	87		66 x 48	22.0	3-II	3-II	3-II	3-II	
88		60 x 72	30.0	DO NOT USE SINGLE COLUMN							88		60 x 72	30.0	DO NOT USE SINGLE COLUMN			
89		96 x 48	30.0	DO NOT USE SINGLE COLUMN							89		96 x 48	30.0	DO NOT USE SINGLE COLUMN			
90		24 x 78	18.0	DO NOT USE SINGLE COLUMN							90		36 x 78	19.5	DO NOT USE SINGLE COLUMN			

NOTE:

- 1. The Gate Exit Panel (FTP-3), Index 07355, Sheet 3.1, Sign Identification Number 86, can be installed on a single column with the following specifications:
- 1. Maximum height to bottom of sign is 14'.
- 2. Column size is 6" aluminum round tube with 1" wall.
- 3. 3 Type II Brackets required for attachment.
- 4. For Type II Bracket details, Attachment and General Notes see Index No. 0860.
- 5. For footing size and Sign Base Details, see Index No. 0853.

Sign size is in inches unless otherwise specified.

STATE OF FLORIDA DEPARTMENT OF TRANSPORTATION  
ROAD DESIGN

**SINGLE COLUMN  
GROUND SIGNS**

Designed By:	002	10/94	Approved By:	
Drawn By:	0003	10/94	Checked By:	00
Checked By:	003	11/94	of 3	11860

## GENERAL NOTES

GENERAL SPECIFICATIONS : Florida Department of Transportation Standard Specifications for Road and Bridge Construction (1999) and Supplements thereto.  
 DESIGN SPECIFICATIONS : Standard Specifications for Structural Supports for Highway Signs, Luminaires and Traffic Signals, AASHTO 1994.

ALUMINUM : Except as noted below, Aluminum Materials shall meet the requirements of Aluminum Association Alloy 6061-T6 (ASTM B209 , B221, or B308).

1. Permitted Alternate for Sheets and Plates --- Alloy 5154-H38 (ASTM-B209)

CONCRETE : All concrete shall be Class (Special), the specified compressive strength at 28 days (f'c) shall be 3 ksi min.

SIGN PANELS : Sign Panels shall be  $\frac{1}{8}$ " min. thick Aluminum Plate with all corners rounded. See sign layout sheet. Panels are to be depressed, etched, neutralized and treated with Alodine 1200, Irdine 14-2, Banderite 721 or equal. No stenciling permitted on panels.

ALUMINUM BOLTS, NUTS & LOCKWASHERS : Aluminum bolts shall meet the requirements of ASTM F468, Alloy 2024-T4.

The Bolts shall have an Anodic Coating of at least 0.0002 inches thick and be chromate sealed. Lockwashers shall meet the requirements of Aluminum Association Alloy 7075-T6 (ASTM B221). Nuts shall meet the requirements of ASTM F-467, Alloy 6061-T6 or 6262-T9.

STAINLESS STEEL BOLTS, NUTS AND LOCKWASHERS : Stainless Steel Bolts, Nuts and Lockwashers conforming to ASTM F593 Alloy Group 2, Condition A, CW2, or 316 may be provided in lieu of Aluminum Bolts, Nuts and Washers.

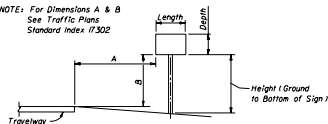
U-BOLTS, NUTS & LOCKWASHERS : U-Bolts, Nuts and Lockwashers shall meet the requirements of ASTM A307, Grade A and shall be galvanized in accordance with ASTM A153.

INSTALLING FRAMABLE COLUMN SUPPORTS : Columns (Posts) may be installed by driving the columns in accordance with Index Nos. 11861 thru 11865, or as an alternate method the contractor may set the columns (Posts) to the depth indicated in preformed holes backfilled with suitable material tamped in layers not thicker than 6" to provide adequate compaction.

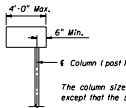
SHOP DRAWINGS : When Type C ground sign supports are furnished and fabricated in accordance with these plans, shop drawings will NOT be required for approval by the Engineer.

HOW TO USE THIS TABLE : Select the appropriate Sign Profile and Size to determine the Sign Identification Number. If the exact Sign Size of all Components are not listed, select the appropriate profile and larger Component Sizes. This table also gives the Quantity and Type of Sign Brackets required for each Sign for each Wind Zone. Where the Sign Size is given as a Vertical and Horizontal Dimension, the Vertical Dimension (Depth) is given first and the Horizontal Dimension (Length) is given last. For Column Sizes, Heights and Footings see appropriate (Wind Zone or Height - H' Max.) sheets titled "Column Sizes, Column Heights and Footings" Index Numbers 11861 thru 11865. No Shop or Field Splice is allowed in Sign Panels. All Panels shall be furnished in one piece.

NOTE: For Dimensions A & B  
 See Traffic Plans  
 Standard Index 17302



TYPICAL SECTION



The column size shall be as tabulated in the Standard except that the size shall not be smaller than  $3\frac{1}{2}$ " Ø.

Note: All cantilever sign installations shall comply with standard index 17302.  
 The sign shall be supported by an aluminum round column with concrete footing and breakaway support. All sign brackets shall be Type II.

CANTILEVER SIGN

### WIND SPEEDS BY COUNTY

#### ZONE NO. 1 (160 M.P.H.)

Alachua, Baker, Bay, Bradford, Calhoun, Clay, Columbia, Escambia, Gadsden, Gilchrist, Hamilton, Holmes, Jackson, Jefferson, Lafayette, Lake, Leon, Liberty, Madison, Marion, Okaloosa, Putnam, Santa Rosa, Sumter, Suwannee, Union, Walton and Washington Counties.

#### ZONE NO. 2 (70 M.P.H.)

Citrus, De Soto, Dixie, Duval, Flagler, Franklin, Glades, Gulf, Hardee, Hendry, Hernando, Highlands, Hillsborough, Levy, Nassau, Okeechobee, Orange, Osceola, Pasco, Pinellas, Polk, Seminole, St. Johns, Taylor and Volusia Counties.

#### ZONE NO. 3 (80 M.P.H.)

Brevard, Charlotte, Collier, Indian River, Lee, Manatee, Martin, Palm Beach, Sarasota, St. Lucie and Volusia Counties.

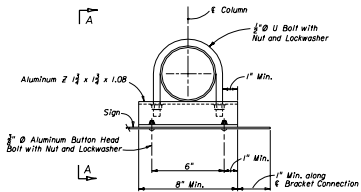
#### ZONE NO. 4 (90 M.P.H.)

Broward, Dade and Monroe Counties.

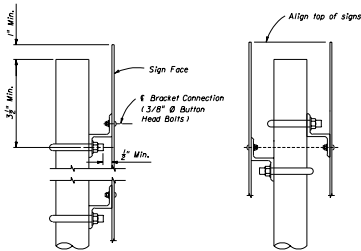
STATE OF FLORIDA DEPARTMENT OF TRANSPORTATION  
 ROAD DESIGN

## SINGLE COLUMN GROUND SIGNS

Designed By	Date	Approved By	Title
5001	10-94	<i>[Signature]</i>	STATE WORKSPACE DESIGN REVIEW
5001	10-94		DATE
5001	10-94	00	2 of 3 11860

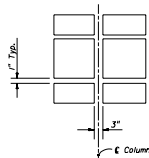


TYPE I BRACKET

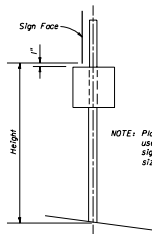


VIEW AA

NOTE: Use profile of largest sign and height to bottom of largest sign to determine column size.

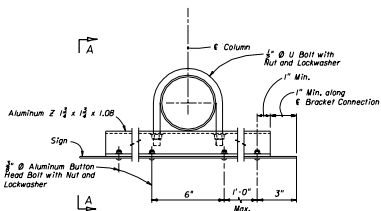


SIGN CLEARANCE

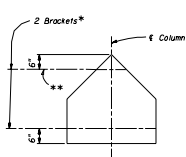


SIGNS AT 90°

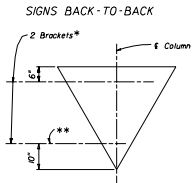
NOTE: Place largest sign on top, use profile of largest sign to determine column size.



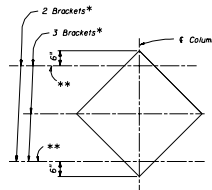
TYPE II BRACKET (SINGLE SIGN)



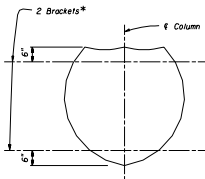
SCHOOL



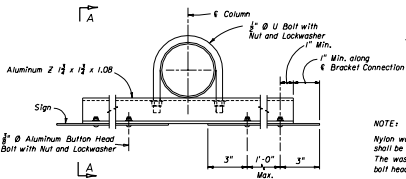
YIELD



DIAMOND



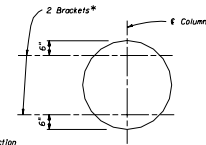
SHIELD



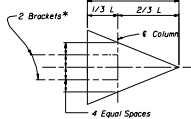
TYPE II BRACKET (DOUBLE SIGNS)

NOTE: 3/8" Stainless Steel Hex Head Bolts with Flat Washer under Head and Lockwasher under Nut may be used in lieu of 3/8" Aluminum Button Head Bolts.

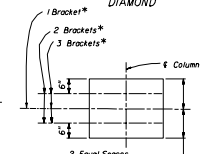
NOTE: Nylon washers provided by the sheeting supplier shall be used on all ground mounted signs. The washers shall be installed under the sign bolt head to protect the sheeting.



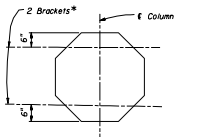
RAILROAD



PENDANT



RECTANGLE



STOP

BRACKET LOCATIONS (SEE VIEW AA)

\* NOTE: The above Bracket locations apply to the 1/2" U-bolt Bracket-Sign Connection (3/8" Button Head Bolts). See View AA. The locations also apply to Double Signs configurations. When installing back-to-back signs the topmost bracket location of one of the signs will require adjustment as shown on the above detail.

\*\* NOTE: Use Type I Bracket at the apex location (always).

STATE OF FLORIDA DEPARTMENT OF TRANSPORTATION ROAD DESIGN			
SINGLE COLUMN GROUND SIGNS			
Drawn By	Checked By	Design Date	Approved By
5003	00	10/96	<i>[Signature]</i>
5003	00	10/96	00 3 of 3 11860