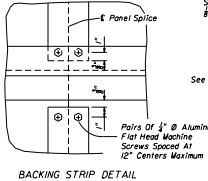
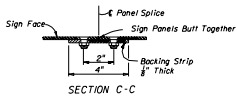
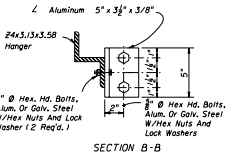


NOTE:
If the Sign Panels are deeper than 4'-0", a horizontal panel splice is allowed at an interior support, shop drawings shall be required. Minimum panel section width = 2'-6".

*Note: Spacing of vertical hangers may be varied slightly or as necessary to clear the truss struts and diagonals at panel points.

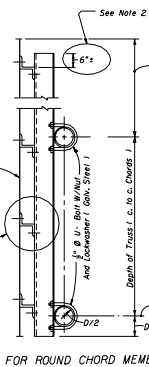
TYPICAL SIGN FACE ELEVATION FOR OVERHEAD TRUSS



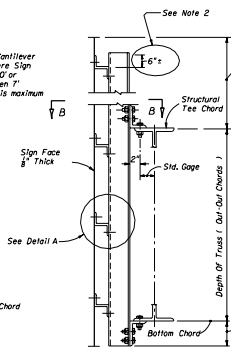
GENERAL NOTES

- (1) For "General Notes" covering Material Specifications; see Sheets 1 of 3, Index 9535.
- (2) This dimension shall be adjusted for porcelain enameled sign panel.

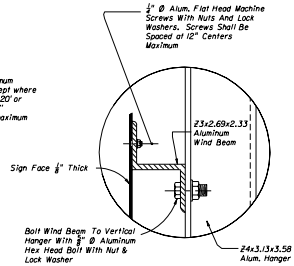
Number Of 23x2.69x2.33 Horiz. Wind Beams For Sign Depth And Wind			Number Of 24x3.13x3.58 Vertical Hanger Beams For Sign Length			
Wind W.P.H.	No. Beams	Max. Depth	2 Hangers	3 Hangers	4 Hangers	5 Hangers
			Sign Length	Sign Length	Sign Length	Sign Length
100	2	5'-0"	0'-15"-0"	15'-1"-30'-0"	30'-1"-45'-0"	
100	3	8'-6"	0'-15"-0"	15'-1"-30'-0"	30'-1"-45'-0"	
100	4	11'-6"	0'-15"-0"	15'-1"-30'-0"	18'-4"-24'-9"	24'-10"-31'-4"
100	5	14'-0"	0'-15"-0"	13'-1"-18'-3"	18'-4"-24'-9"	24'-10"-31'-4"
100	2	5'-3"	0'-15"-0"	15'-1"-30'-0"	30'-1"-45'-0"	
100	3	8'-10"	0'-15"-0"	15'-1"-22'-3"	22'-4"-30'-0"	30'-1"-38'-0"
100	4	12'-0"	0'-15"-0"	15'-1"-22'-3"	22'-4"-30'-0"	30'-1"-38'-0"
100	5	15'-0"	0'-11'-7"	11'-8"-16'-4"	16'-5"-22'-2"	22'-3"-28'-0"
90	2	5'-6"	0'-15"-0"	15'-1"-30'-0"	30'-1"-45'-0"	
90	3	9'-6"	0'-15"-0"	15'-1"-27'-3"	27'-4"-37'-0"	
90	4	12'-9"	0'-15"-0"	15'-1"-27'-3"	27'-4"-37'-0"	
90	5	16'-0"	0'-14'-3"	14'-4"-20'-0"	20'-1"-27'-0"	27'-1"-34'-3"
80	2	6'-0"	0'-15"-0"	15'-1"-30'-0"	30'-1"-45'-0"	
80	3	10'-0"	0'-15"-0"	15'-1"-30'-0"	30'-1"-45'-0"	
80	4	14'-0"	0'-15"-0"	15'-1"-25'-9"	25'-10"-34'-10"	



FOR ROUND CHORD MEMBERS



FOR ROLLED STRUCTURAL SHAPES



(SHOWING ATTACHMENT OF SIGN FACE PANEL TO VERTICAL HANGER SUPPORTS)
DETAIL A

STATE OF FLORIDA DEPARTMENT OF TRANSPORTATION
ROAD DESIGN

ALUMINUM & STEEL
OVERHEAD SIGN STRUCTURES

Name	Date	Approved By
Designed By	05/21/74	
Drawn By	5003 11/74	
Checked By	05/21/74	

1 of 1 11037