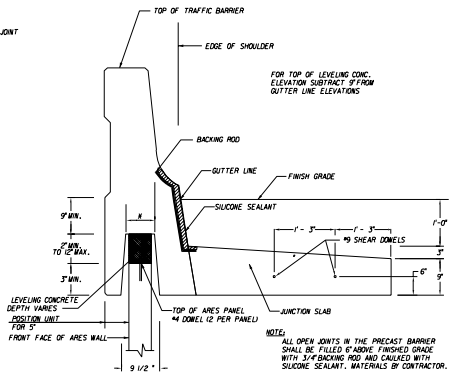
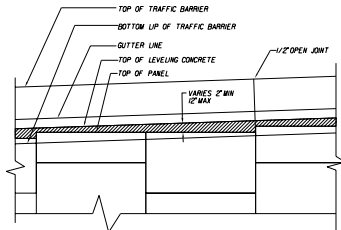


PLAN VIEW
PRECAST TRAFFIC BARRIER
NOT TO SCALE



SECTION A-A AT APPROACH SLAB
NOT TO SCALE



PRECAST TRAFFIC BARRIER PARTIAL ELEVATION VIEW
NOT TO SCALE

7/8" FOR PANELS IN SLIGHTLY TO MODERATELY AGGRESSIVE ENVIRONMENTS
5/8" FOR SALT WATER ENVIRONMENTS

THIS SYSTEM WALL MAY BE USED IN ALL ENVIRONMENTS.

THIS DESIGN IS BASED UPON SPECIFIC PROPERTIES OF TENSAR PRODUCTS (GEOTEXTILES, DRAINAGE COMPOSITES AND EROSION MEDIA) WHICH ARE PROPRIETARY TO THE TENSAR CORPORATION (200 CITIZENS PARKWAY, MORROW GA, 30260, ANY SUBSTITUTION OF THE SPECIFIED PRODUCTS WILL INVALIDATE THIS DESIGN.

THIS DRAWING, DESIGN NOTES AND ASSOCIATED CALCULATIONS HAVE BEEN PREPARED BY TENSAR EARTH TECHNOLOGIES, INC. FOR PRELIMINARY DESIGN PURPOSES AND SHALL NOT BE USED FOR FINAL DESIGN OR CONSTRUCTION.

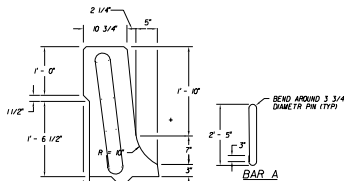
© 1998, TENSAR EARTH TECHNOLOGIES, INC.

TENSAR
EARTH TECHNOLOGIES, INC.
375-25 South Loop Drive
Lakeside Center, Suite 450
Atlanta, GA 30328
(404) 250-1200

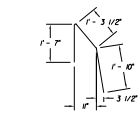


STATE OF FLORIDA DEPARTMENT OF TRANSPORTATION ROAD DESIGN			
RETAINING WALL SYSTEM TENSAR EARTH TECHNOLOGIES MSE RETAINING WALL			
Designed By	Checked By	Approved By	DATE
Drawn By	JMS	WJH	00
Checked By	JMS	00	10 of 17
			5025

*****NOT FOR CONSTRUCTION*****



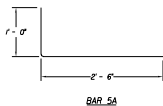
C.J.P. TRAFFIC BARRIER PARAPET
NOT TO SCALE



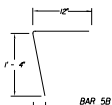
BAR B



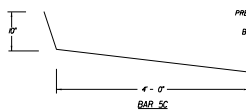
BAR D



BAR 5A

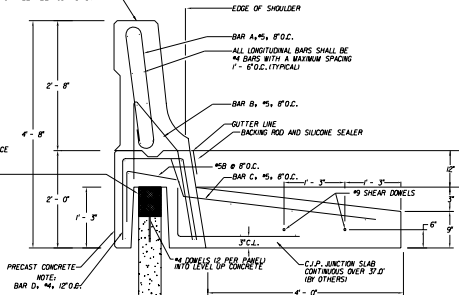


BAR 5B



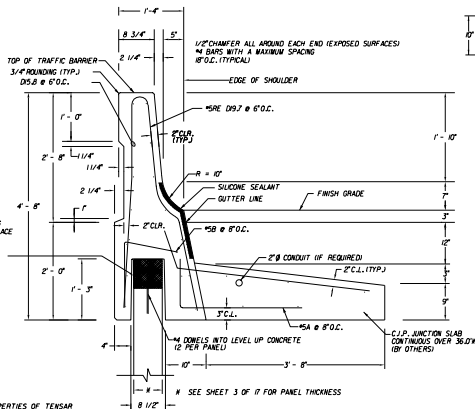
BAR 5C

PRECAST OR C.J.P. TRAFFIC BARRIER
(MIN. LENGTH BETWEEN JOINTS 10')

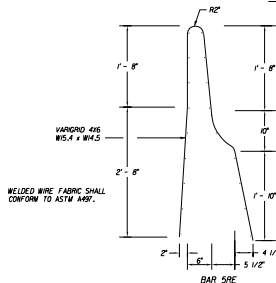


- NOTES:
- ALL OPEN JOINTS IN PRECAST BARRIER SHALL BE FILLED ABOVE FINISHED GRADE WITH 3/4\"/>

PRECAST BARRIER - STANDARD REBAR REINFORCEMENT
NOT TO SCALE



PRECAST BARRIER - VARIGRID REINFORCEMENT
NOT TO SCALE



VARIGRID #16
W5.4 x W4.5

WELDED WIRE FABRIC SHALL CONFORM TO ASTM A957.

THIS SYSTEM MAY BE USED IN ALL ENVIRONMENTS.

THIS DESIGN IS BASED UPON SPECIFIC PROPERTIES OF TENSAR PRODUCTS (GEORGRIDS, DRAINAGE COMPOSITES AND EROSION MEDIA) WHICH ARE PROPRIETARY TO THE TENSAR CORPORATION (20) CITIZENS PARKWAY, MORROW GA, 30260. ANY SUBSTITUTION OF THE SPECIFIED PRODUCTS WILL INVALIDATE THIS DESIGN. ANY PARTY ACCEPTING THIS DOCUMENT DOES SO IN CONFIDENCE AND AGREES THAT IT SHALL NOT BE DUPLICATED WHOLE OR IN PART, NOR DISCLOSED TO OTHERS, WITHOUT THE CONSENT OF TENSAR EARTH TECHNOLOGIES, INC.

THIS DRAWING, DESIGN NOTES AND ASSOCIATED CALCULATIONS HAVE BEEN PREPARED BY TENSAR EARTH TECHNOLOGIES, INC. FOR PRELIMINARY DESIGN PURPOSES AND SHALL NOT BE USED FOR FINAL DESIGN OR CONSTRUCTION.

© 1998, TENSAR EARTH TECHNOLOGIES, INC.

TENSAR
EARTH TECHNOLOGIES, INC.
5745 Northpoint Drive
Lawville Center, Suite 450
Atlanta, GA 30329
404.250-1200



MARK	QUANTITY	REMARKS
5A	8	3'-6" LONG
5B	15	6'-6" LONG
A	VARGARD	W4.5 @ 6' O.C.
B	VARGARD	W5.4 @ 4' O.C.

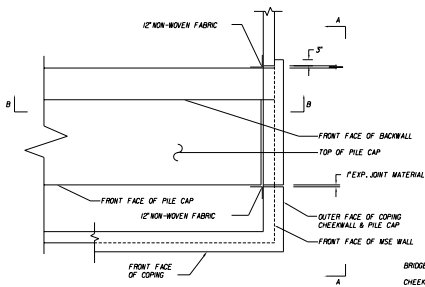
STATE OF FLORIDA DEPARTMENT OF TRANSPORTATION
ROAD DESIGN

RETAINING WALL SYSTEM
TENSAR EARTH TECHNOLOGIES
MSE RETAINING WALL

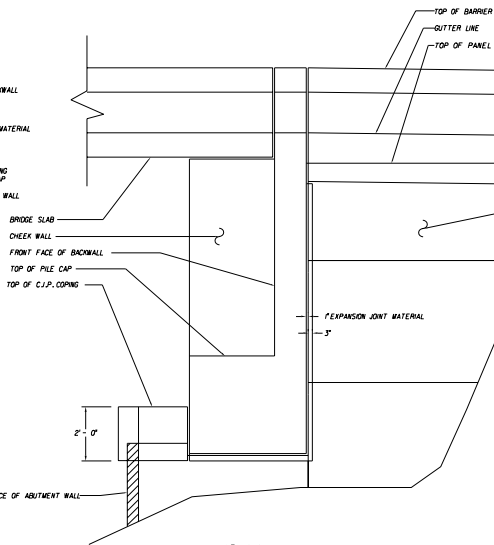
Revised	Date	Approved By	Checked By	Scale	Rev. No.
00	04/16/98	[Signature]	JMS	00	5025

11 of 17

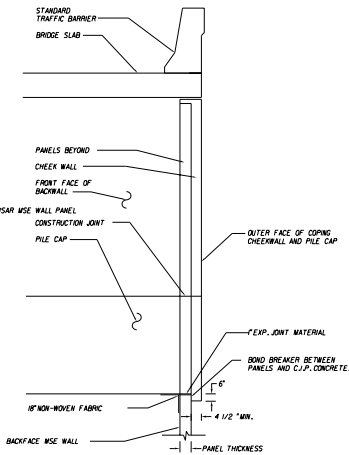
000005716C000000



PLAN VIEW @ ENDBENT
NOT TO SCALE



VIEW A-A



SECTION B-B

SECTIONS @ ENDBENT
NOT TO SCALE

THIS SYSTEM MAY BE USED IN ALL ENVIRONMENTS.

THIS DESIGN IS BASED UPON SPECIFIC PROPERTIES OF TENSAR PRODUCTS (GEOTRIDS, DRAINAGE COMPOSITES AND EROSION MEDIA), WHICH ARE PROPRIETARY TO THE TENSAR CORPORATION 1210 CITIZENS PARKWAY, NORWON GA, 30050. ANY SUBSTITUTION OF THE SPECIFIED PRODUCTS WILL INVALIDATE THIS DESIGN.

THIS DRAWING, DESIGN NOTES AND ASSOCIATED CALCULATIONS HAVE BEEN PREPARED BY TENSAR EARTH TECHNOLOGIES, INC. FOR PRELIMINARY DESIGN PURPOSES AND SHALL NOT BE USED FOR FINAL DESIGN OR CONSTRUCTION.

© 1998, TENSAR EARTH TECHNOLOGIES, INC.

TENSAR
EARTH TECHNOLOGIES, INC.
5715-B Greenhope Drive
Latopesta Center, Suite 450
Atlanta, GA 30358
1404.250-1290

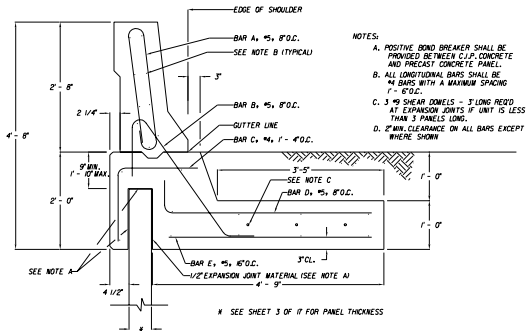


STATE OF FLORIDA DEPARTMENT OF TRANSPORTATION
ROAD DESIGN

RETAINING WALL SYSTEM
TENSAR EARTH TECHNOLOGIES
MSE RETAINING WALL

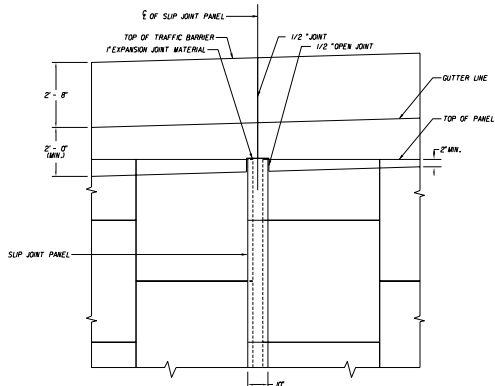
Revised	Date	Approved By
Developed By		<i>[Signature]</i>
Drawn By	JMS 8/14/78	DATE SPECIFIED DESIGN IS GOOD
Checked By	JMS	DATE
	00	12 of 17 5025

*****0208202702/04/02080000
*****5715/NC/0800

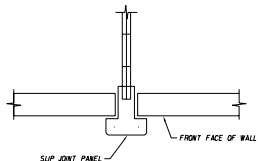


C.I.P. CONCRETE TRAFFIC BARRIER
NOT TO SCALE

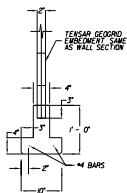
- NOTES:
- POSITIVE BOND BREAKER SHALL BE PROVIDED BETWEEN C.I.P. CONCRETE AND PRECAST CONCRETE PANEL.
 - ALL LONGITUDINAL BARS SHALL BE #4 BARS WITH A MAXIMUM SPACING 1' - 0" O.C.
 - 3 #9 SHEAR DOMELS - 3 LONG REQ'D AT EXPANSION JOINTS IF UNIT IS LESS THAN 3 PANELS LONG.
 - 2" MIN. CLEARANCE ON ALL BARS EXCEPT WHERE SHOWN



C.I.P. TRAFFIC BARRIER OVER SLIP JOINT PANEL



SLIP JOINT DETAIL
NOT TO SCALE



THIS DESIGN IS BASED UPON SPECIFIC PROPERTIES OF TENSAR PRODUCTS (GEOTEXTILES, DRAINAGE COMPOSITES AND EROSION MEDIA), WHICH ARE PROPRIETARY TO THE TENSAR CORPORATION (200 CITIZENS PARKWAY, WORWON, GA, 30090). ANY SUBSTITUTION OF THE SPECIFIED PRODUCTS WILL INVALIDATE THIS DESIGN.

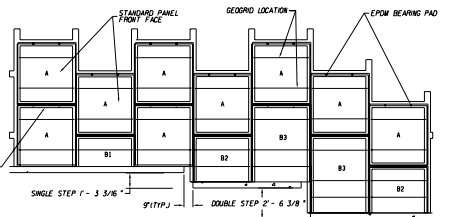
THIS DRAWING, DESIGN NOTES AND ASSOCIATED CALCULATIONS HAVE BEEN PREPARED BY TENSAR EARTH TECHNOLOGIES, INC., FOR PRELIMINARY DESIGN PURPOSES AND SHALL NOT BE USED FOR FINAL DESIGN OR CONSTRUCTION.

© 1998, TENSAR EARTH TECHNOLOGIES, INC.

TENSAR
EARTH TECHNOLOGIES, INC.
5175 Centerville Drive
Lakeland Center, Suite 450
Atlanta, GA 30328
(404) 250-1290



8" WIDE NON-WOVEN FABRIC COVER ALL JOINTS



TYPICAL LEVELING PAD STEP DETAIL
NOT TO SCALE

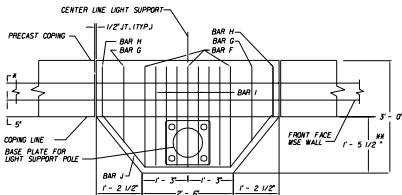
THIS SYSTEM MAY BE USED IN ALL ENVIRONMENTS.

STATE OF FLORIDA DEPARTMENT OF TRANSPORTATION
ROAD DESIGN

RETAINING WALL SYSTEM
TENSAR EARTH TECHNOLOGIES
MSE RETAINING WALL

Designed By	Checked By	Date	Approved By
JMS	JMS	04/14/98	[Signature]
Checked By		00	13 of 17
			5025

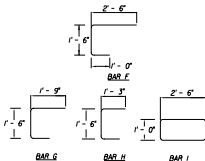
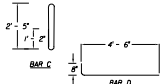
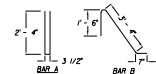
*****NOT FOR CONSTRUCTION*****



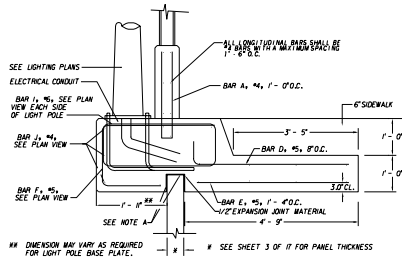
PLAN
NOT TO SCALE

NOTE: REBAR IN BARRIER AND JUNCTION SLAB NOT SHOWN FOR CLARITY

NOTE:
REFER TO LIGHT POLE PLASTER DETAILS IN BRIDGE PLANS FOR NOTES AND ADDITIONAL DETAILS (CONDUIT, JUNCTION BOXES, ETC.)

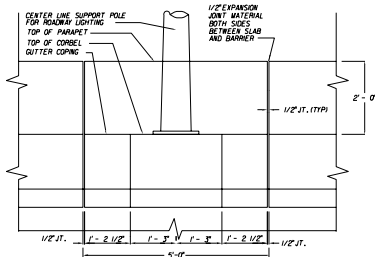


BAR BENDING DETAIL
NOT TO SCALE



PARAPET DETAIL AT LIGHT POLE
NOT TO SCALE

NOTES:
A. POSITIVE BOND BREAKER (E.G. MIL POLYETHYLENE OR APPROVED EQUAL) SHALL BE PROVIDED BETWEEN CAST-IN PLACE CONC. AND PRECAST CONC. PANEL.
B. MAINTAIN A 2\"/>



PARTIAL ELEVATION

THIS SYSTEM MAY BE USED IN ALL ENVIRONMENTS.

THIS DESIGN IS BASED UPON SPECIFIC PROPERTIES OF TENSAR PRODUCTS (GEOTEXTILES, DRAINAGE COMPOSITES AND GEOSPIN MEDIA), WHICH ARE PROPRIETARY TO THE TENSAR CORPORATION (200 CITIZENS PARKWAY, WORWON GA. 30090). ANY SUBSTITUTION OF THE SPECIFIED PRODUCTS WILL INVALIDATE THIS DESIGN.

THIS DRAWING, DESIGN NOTES AND ASSOCIATED CALCULATIONS HAVE BEEN PREPARED BY TENSAR EARTH TECHNOLOGIES, INC. FOR PRELIMINARY DESIGN PURPOSES AND SHALL NOT BE USED FOR FINAL DESIGN OR CONSTRUCTION.

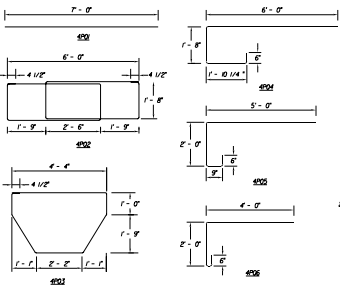
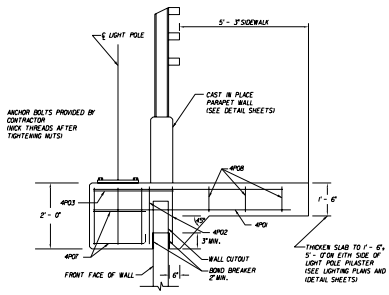
© 1998, TENSAR EARTH TECHNOLOGIES, INC.

TENSAR
EARTH TECHNOLOGIES, INC.
5715-D Conroy Drive
Lawrenceville, GA 30046
4041-252-1200



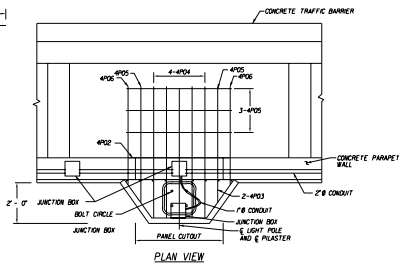
STATE OF FLORIDA DEPARTMENT OF TRANSPORTATION ROAD DESIGN			
RETAINING WALL SYSTEM TENSAR EARTH TECHNOLOGIES MSE RETAINING WALL			
Issued Date	Approved By	[Signature]	
Designed By	Checked By	DATE	SCALE
Drawn By	JMS	00	14 of 17
Checked By			5025

0000057AC0000000

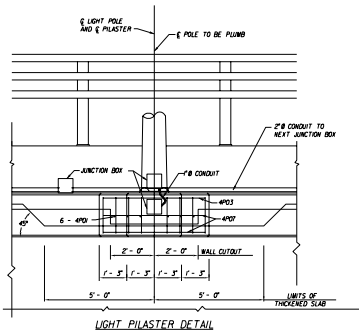
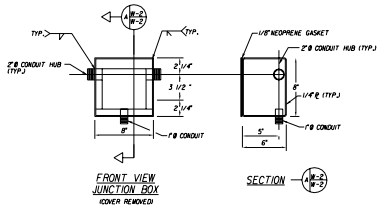


BAR BENDING DIAGRAM

BILL OF REINFORCING STEEL				
MARK	SIZE	NO. REQUIRED	LENGTH	
4P02	4	6	7'-0"	
4P03	4	2	24'-5"	
4P03	4	1	16'-9"	
4P04	4	4	9'-0"	
4P05	4	2	7'-0"	
4P07	4	2	6'-2"	
4P07	4	2	6'-4"	
4P08	4	3	22'-1"	



PLAN VIEW



LIGHT PILASTER DETAIL

THIS SYSTEM MAY BE USED IN ALL ENVIRONMENTS.

THIS DESIGN IS BASED UPON SPECIFIC PROPERTIES OF TENSAR PRODUCTS (GEORGS, DRAINAGE COMPOSITES AND EROSION MEDIA), WHICH ARE PROPRIETARY TO THE TENSAR CORPORATION (200 CITIZENS PARKWAY, MORROW GA. 30560. ANY SUBSTITUTION OF THE SPECIFIED PRODUCTS WILL INVALIDATE THIS DESIGN.

THIS DRAWING, DESIGN NOTES AND ASSOCIATED CALCULATIONS HAVE BEEN PREPARED BY TENSAR EARTH TECHNOLOGIES, INC. FOR PRELIMINARY DESIGN PURPOSES AND SHALL NOT BE USED FOR FINAL DESIGN OR CONSTRUCTION.

© 1998, TENSAR EARTH TECHNOLOGIES, INC.

TENSAR
EARTH TECHNOLOGIES, INC.
3750-B Greenidge Drive
Lafayette Center, Suite 450
Atlanta, Ga. 30339
4041-250-1290

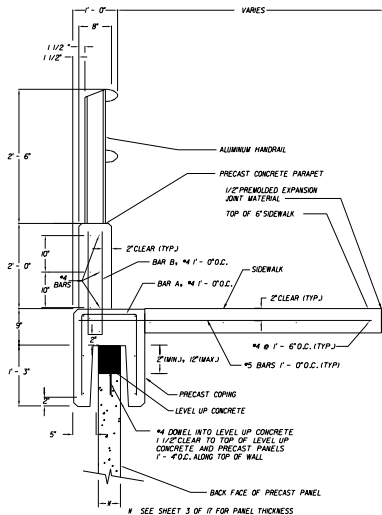


STATE OF FLORIDA DEPARTMENT OF TRANSPORTATION
ROAD DESIGN

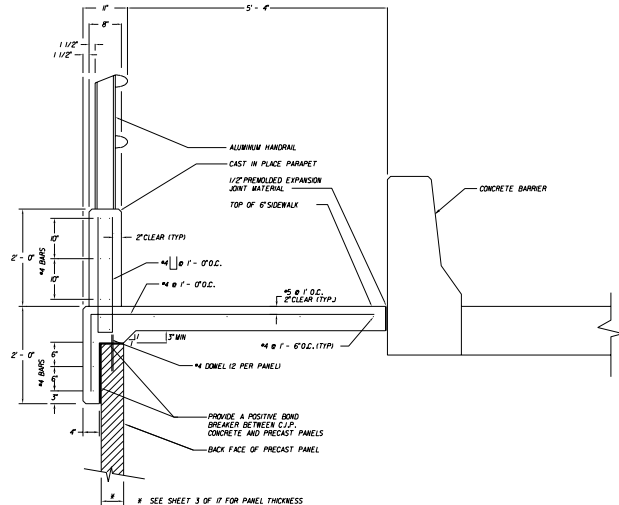
RETAINING WALL SYSTEM
TENSAR EARTH TECHNOLOGIES
MSE RETAINING WALL

Revised	Date	Approved By	Drawn By	Checked By	Title	Scale	Sheet No.	Total No.
		<i>[Signature]</i>	JMS	JKW	DD	15 OF 17	5025	

00000557AC200000



PRECAST PARAPET DETAIL
NOT TO SCALE



C.J.P. PARAPET DETAIL
NOT TO SCALE

THIS DESIGN IS BASED UPON SPECIFIC PROPERTIES OF TENSAR PRODUCTS (GEOTEXTILES, DRAINAGE COMPOSITES AND EROSION CONTROL) WHICH ARE PROPRIETARY TO THE TENSAR CORPORATION 420 CITIZENS PARKWAY, MORROW GA, 30260. ANY SUBSTITUTION OF THE SPECIFIED PRODUCTS WILL INVALIDATE THIS DESIGN.

THIS DRAWING, DESIGN NOTES AND ASSOCIATED CALCULATIONS HAVE BEEN PREPARED BY TENSAR EARTH TECHNOLOGIES, INC. FOR PRELIMINARY DESIGN PURPOSES AND SHALL NOT BE USED FOR FINAL DESIGN OR CONSTRUCTION.

© 1994, TENSAR EARTH TECHNOLOGIES, INC.

TENSAR
EARTH TECHNOLOGIES, INC.
5755-B Centeridge Drive
Lakeside Center, Suite 450
Atlanta, GA 30329
404/250-1200



THIS SYSTEM MAY BE USED IN ALL ENVIRONMENTS.

STATE OF FLORIDA DEPARTMENT OF TRANSPORTATION ROAD DESIGN			
RETAINING WALL SYSTEM TENSAR EARTH TECHNOLOGIES USE RETAINING WALL			
Designed By	Checked	Date	Approved By
Drawn By	JMS	8/14/94	<i>[Signature]</i>
Checked By	JMS	8/14/94	00
		17 of 17	5025

*****SITING*****