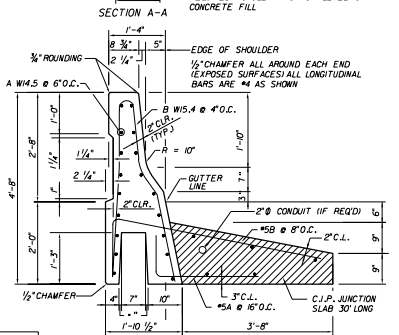
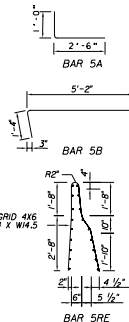
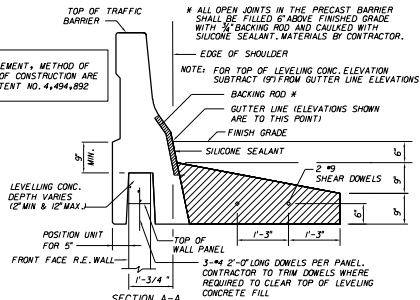


PRECAST TRAFFIC BARRIER  
PARTIAL ELEVATION

TRAFFIC BARRIER ELEMENT, METHOD OF  
SUPPORT AND METHOD OF CONSTRUCTION ARE  
COVERED BY U.S. PATENT NO. 4,494,892



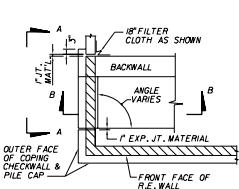
MARK	QUANTITY	REMARKS
5A	8	3'-6" LONG
5B	15	6'-6" LONG
A	VARIGRID	W14.5 @ 6\"/>
B	VARIGRID	W15.4 @ 4\"/>

THIS SYSTEM SHALL BE USED IN SLIGHTLY OR  
MODERATELY AGGRESSIVE ENVIRONMENTS ONLY  
CRUCIFORM AND SQUARE PANELS

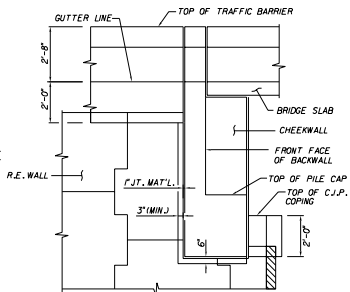
STATE OF FLORIDA DEPARTMENT OF TRANSPORTATION  
ROAD DESIGN

RETAINING WALL SYSTEM  
REINFORCED EARTH COMPANY  
REINFORCED EARTH WALL

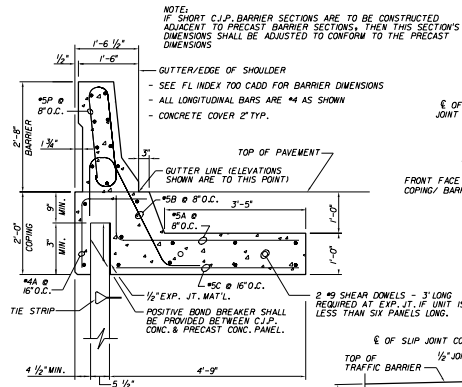
Designed By	Checked By	Approved By	Date
		<i>WJ/26</i>	
Drawn By	Reviewed By	00	8 of 14
Checked By			5015



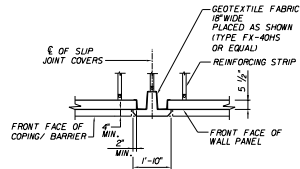
PLAN VIEW @ BEND (TYP.)



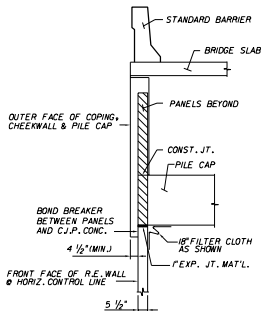
SECTION A-A



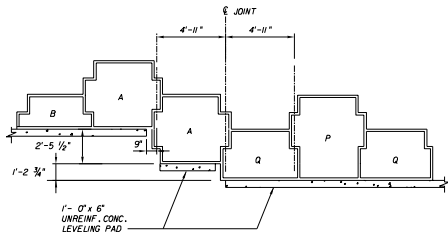
C.J.P. CONC. TRAFFIC BARRIER



SLIP JOINT COVER DETAIL

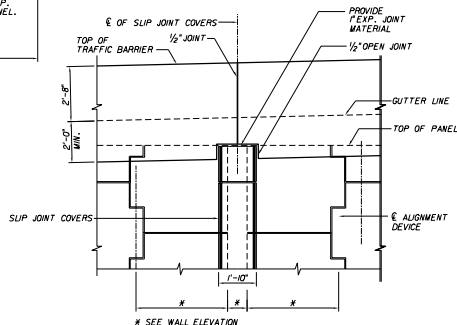


SECTION B-B



TYPICAL LEVELING PAD STEP DETAIL

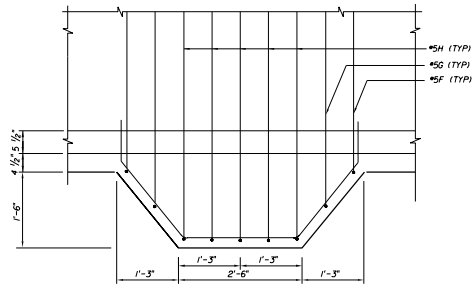
(LEVELING PAD DIMENSIONS ARE THE SAME FOR BOTH CRUCIFORM AND SQUARE PANELS. SEE WALL ELEVATIONS FOR PANEL TYPES AT STEPS)



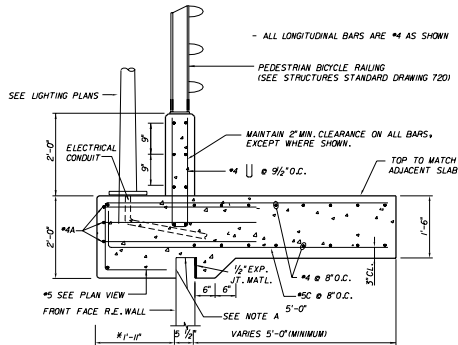
C.J.P. TRAFFIC BARRIER OVER SLIP JOINT COVER

THIS SYSTEM SHALL BE USED IN SLIGHTLY OR MODERATELY AGGRESSIVE ENVIRONMENTS ONLY  
CRUCIFORM AND SQUARE PANELS

STATE OF FLORIDA DEPARTMENT OF TRANSPORTATION ROAD DESIGN			
RETAINING WALL SYSTEM REINFORCED EARTH COMPANY REINFORCED EARTH WALL			
Drawn By	Checked By	Approved By	Date
		<i>W. J. [Signature]</i>	
			00 9 of 14 5015



1 PLAN



2 BARRIER DETAIL @ LIGHT POLE

\* DIMENSION MAY VARY AS REQUIRED FOR LIGHT POLE BASE PLATE.

(SEE NOTE B)  
 (6-PANEL UNIT STD)  
 (5-PANEL UNIT MIN)

NOTE A:  
 POSITIVE BOND BREAKER SHALL BE PROVIDED BETWEEN C.J.P., CONCRETE AND CONCRETE PANEL.

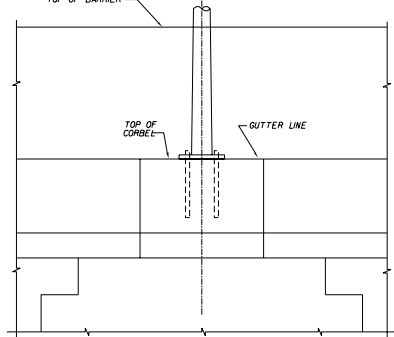
NOTE B:  
 THE BARRIER JUNCTION SLAB SHALL HAVE THESE DIMENSIONS FOR ONE PRECAST UNIT EITHER SIDE OF LIGHT POLE BARRIER. LONGITUDINAL BARS SHALL BE AS SHOWN ABOVE.

NOTE C:  
 2 - #9 SHEAR DOWELS - 3'-0" LONG REFER TO PRECAST BARRIER SHEET.

NOTE D:  
 LIGHT POLE MANUFACTURER IS RESPONSIBLE FOR PROVIDING ANCHOR BOLTS THAT EFFECTIVELY TRANSMIT LOADS TO THE PILASTER AND FIT THE REINFORCING CAGE.

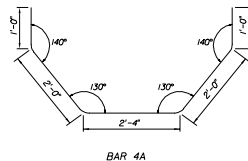
NOTE E:  
 SEE STRUCTURES STANDARD DRAWING 500 FOR ADDITIONAL DETAILS.

TOP OF BARRIER  
 SUPPORT POLE FOR ROADWAY LIGHTING

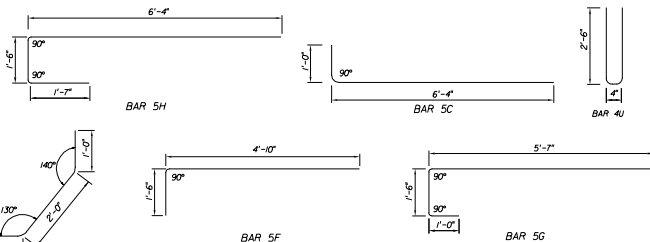


3 PARTIAL ELEVATION

REBAR SCHEDULE	
MARK	QTY.
4A	3
5C	8
5F	2
5G	2
5H	5
4U	6



BAR 4A



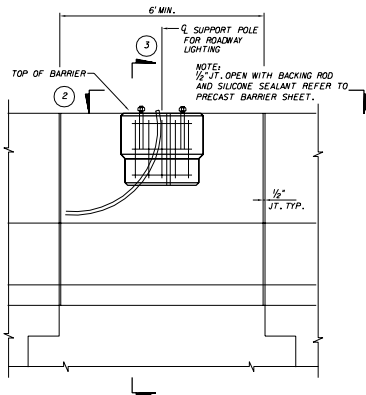
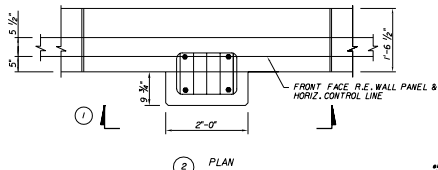
4 BAR BENDING DETAILS

THIS SYSTEM SHALL BE USED IN SLIGHTLY OR MODERATELY AGGRESSIVE ENVIRONMENTS ONLY CRUCIFORM AND SQUARE PANELS

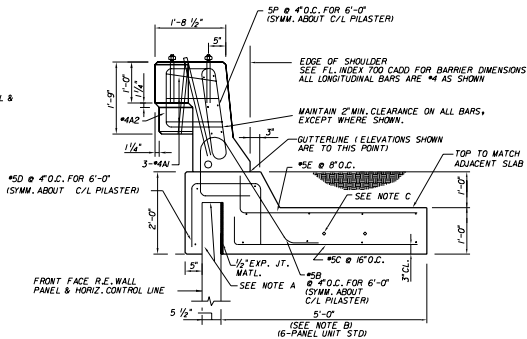
STATE OF FLORIDA DEPARTMENT OF TRANSPORTATION  
 ROAD DESIGN

RETAINING WALL SYSTEM  
 REINFORCED EARTH COMPANY  
 REINFORCED EARTH WALL

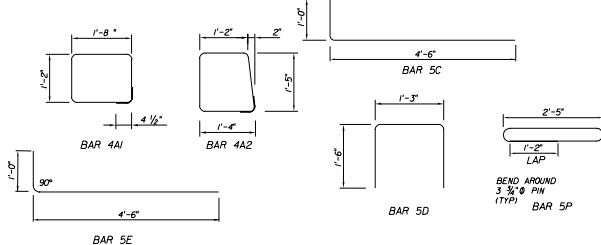
Designed By	Checked By	Approved By	Date
		<i>WJ/RL</i>	
Drawn By	Scale	Sheet No.	Rev. No.
		00	
Checked By	Date	10 of 14	5015



1 PARTIAL ELEVATION



3 BARRIER DETAIL @ LIGHT POLE

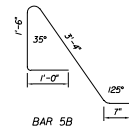


4 BAR BENDING DETAILS

NOTES:

- A. POSITIVE BOND BREAKER SHALL BE PROVIDED BETWEEN CAST IN PLACE CONC. AND PRECAST CONC. PANEL.
- B. THE BARRIER JUNCTION SLAB SHALL HAVE THESE DIMENSIONS FOR ONE PRECAST UNIT EITHER SIDE OF LIGHT POLE BARRIER LONGITUDINAL BARS SHALL BE AS SHOWN ABOVE.
- C. 2 - #9 SHEAR DONELS - 3'-0" LONG REFER TO PRECAST BARRIER SHEET
- D. LIGHT POLE SUPPLIER IS RESPONSIBLE FOR PROVIDING ANCHOR BOLTS THAT EFFECTIVELY TRANSMIT THE LIGHT POLE LOADS TO THE PLASTER AND FIT THE REINFORCING CAGE.
- E. SEE STRUCTURES STANDARD DRAWING 500 FOR ADDITIONAL DETAILS.

MARK	QTY.
4A1	3
4A2	5
5C	10
5D	18
5E	9
5P	18

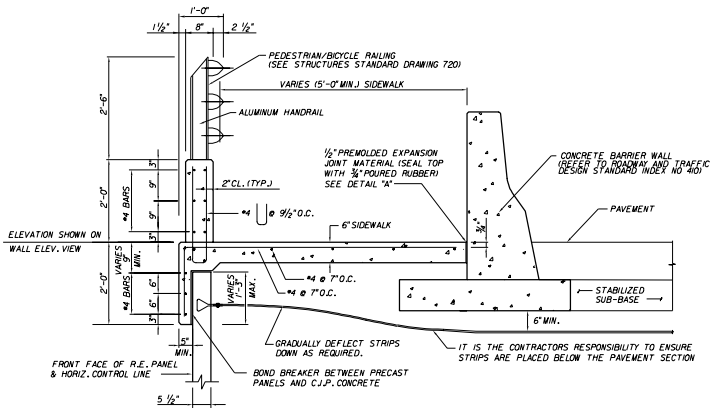


STATE OF FLORIDA DEPARTMENT OF TRANSPORTATION  
ROAD DESIGN

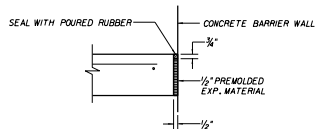
RETAINING WALL SYSTEM  
REINFORCED EARTH COMPANY  
REINFORCED EARTH WALL

Designed By	Checked By	Drawn By	Scale	Revised
Approved By		Date		
[Signature]		00 11 of 14 5015		

THIS SYSTEM SHALL BE USED IN SLIGHTLY OR MODERATELY AGGRESSIVE ENVIRONMENTS ONLY  
CRUCIFORM AND SQUARE PANELS



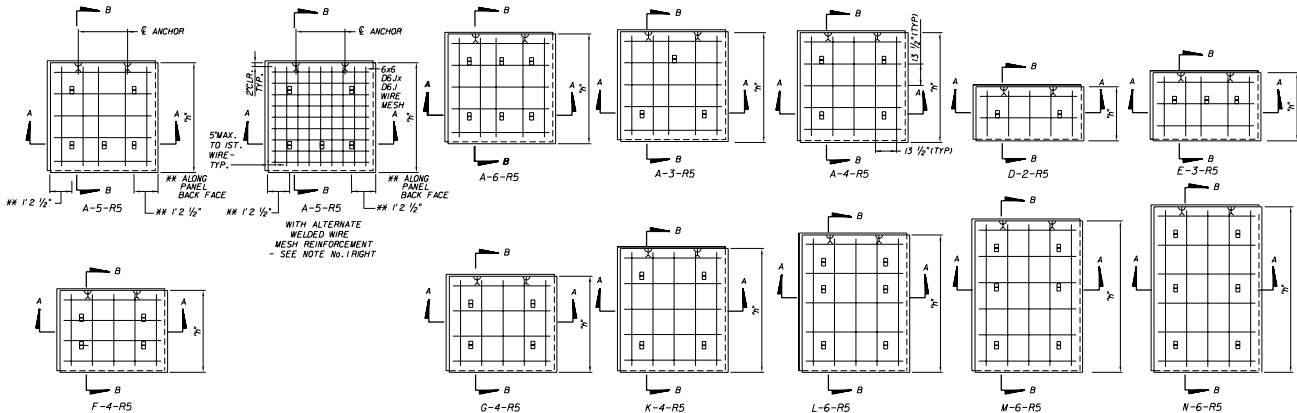
C.J.P. PARAPET DETAIL w/ HANDRAIL



DETAIL "A"

THIS SYSTEM SHALL BE USED IN SLIGHTLY OR MODERATELY AGGRESSIVE ENVIRONMENTS ONLY  
CRUCIFORM AND SQUARE PANELS

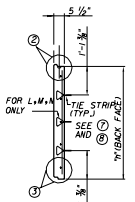
STATE OF FLORIDA DEPARTMENT OF TRANSPORTATION ROAD DESIGN			
<b>RETAINING WALL SYSTEM REINFORCED EARTH COMPANY REINFORCED EARTH WALL</b>			
Designed By	Name	Date	Approved By <i>W. J. [Signature]</i>
Drawn By			Scale: 1/4" = 1'-0"
Checked By			00 12 of 14 5015



TYPICAL PANELS

NOTES:

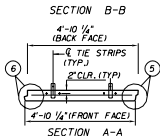
1. REINFORCING STEEL TO BE A615, GRADE 60, DEFORMED WELDED WIRE MESH (ASTM A497) MAY BE SUBSTITUTED FOR REBARS. DEFORMED WELDED MESH REQUIREMENTS FOR PANEL 'A' IS SHOWN IN THIS SHEET. MESH FOR OTHER PANEL TYPES SHALL BE DETERMINED BASED ON PANEL SHAPE, MESH STYLE, AND MINIMUM EDGE CLEAR DISTANCES SHOWN ON THIS SHEET.
2.  $\frac{1}{2}$ " x  $\frac{1}{2}$ " CHAMFER SHALL BE PROVIDED ON ALL EXPOSED EDGES (FRONT FACE ONLY).
3. ALL PANEL TYPES AND OTHER RELATED ELEMENTS WILL BE DETAILED ON PANEL SHOP DRAWINGS.
4. ALL PANELS SHALL HAVE TWO (2) ANCHORS.
5. PANEL DESIGN THICKNESS IS  $5\frac{1}{2}$ " THICKNESS OF CONCRETE MUST INCREASE TO ACCOMMODATE ANY ARCHITECTURAL SURFACE FINISH THAT MAY BE SPECIFIED.
6. ACTUAL LOCATION OF REBARS WILL BE ADJUSTED TO ACCOMMODATE PANEL CASTING. MINIMUM  $1\frac{3}{8}$ " CLEARANCE IS REQUIRED BETWEEN REBARS & TIE-STRIPS.



PANEL TYPE	H"
A	4'-10 $\frac{1}{4}$ "
D	2'-4 $\frac{3}{4}$ "
E	3'-0 $\frac{1}{4}$ "
F	3'-7 $\frac{1}{2}$ "
G	4'-3"
K	5'-5 $\frac{3}{4}$ "
L	6'-7"
M	6'-8 $\frac{1}{2}$ "
N	7'-4"

NOTE: CONCRETE COVER ON ALL REINFORCEMENT TO BE 2" MIN.

PANEL THICKNESS	REINFORCEMENT DESIGNATION	PANEL REINFORCEMENT #5	MAXIMUM ALLOWABLE HORIZONTAL STRESS AT FACING (KSF)
$5\frac{1}{2}$ " (MIN.)	R5	5-#3 VERTICAL	1.9
		5-#3 HORIZONTAL	
	R7	7-#3 VERTICAL	1.78
		6-#3 HORIZONTAL	

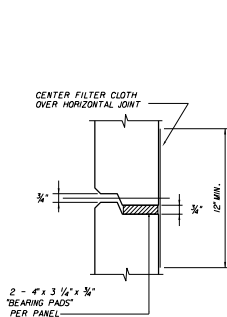


STATE OF FLORIDA DEPARTMENT OF TRANSPORTATION  
ROAD DESIGN

RETAINING WALL SYSTEM  
REINFORCED EARTH COMPANY  
REINFORCED EARTH WALL

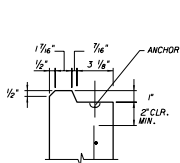
Designed By	Checked By	Approved By	DATE
		<i>WJZ</i>	
Drawn By	Checked By	DATE	SCALE
Checked By		DATE	SCALE
		00	13 of 14

5015

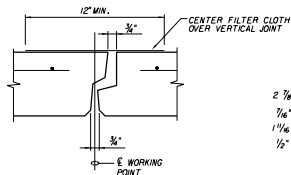


1 HORIZONTAL JOINT

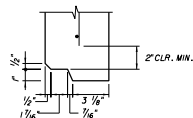
2 - 4" x 3 1/4" x 3/8"  
"BEARING PADS"  
PER PANEL



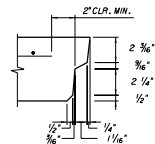
2 SECTION @ PANEL TOP



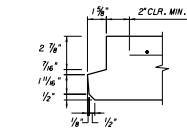
4 VERTICAL JOINT



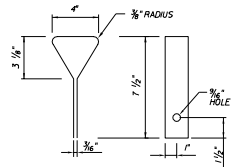
3 SECTION @ PANEL BOTTOM



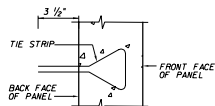
5 SECTION @ PANEL RIGHT SIDE



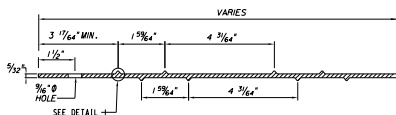
6 SECTION @ PANEL LEFT SIDE



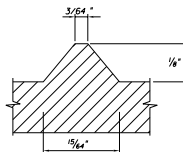
8 TIE STRIP DETAIL



7 PARTIAL SECTION @ TIE STRIP



REINFORCING STRIP DETAIL



DETAIL I

THIS SYSTEM SHALL BE USED IN SLIGHTLY OR  
MODERATELY AGGRESSIVE ENVIRONMENTS ONLY  
SQUARE PANELS

STATE OF FLORIDA DEPARTMENT OF TRANSPORTATION ROAD DESIGN			
RETAINING WALL SYSTEM REINFORCED EARTH COMPANY REINFORCED EARTH WALL			
Designed By	Name	Date	Approved By
Drawn By			<i>W. J. [Signature]</i>
Checked By			DATE SUBMITTED: 08/20/07
			REVISION:
		00	14 of 14 5015