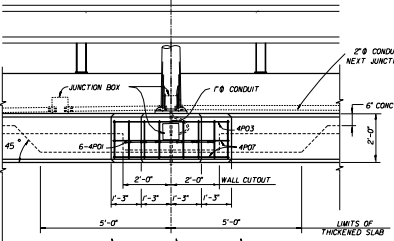


CONC. PARAPET WALL

BOLT CIRCLE JUNCTION BOX
PANEL CUTOUT
1'-0" CONDUIT
2-#403
1'-0" CONDUIT
2-#403
1'-0" CONDUIT

PLAN

1'-0" CONDUIT
2-#403
1'-0" CONDUIT
2-#403
1'-0" CONDUIT



LIGHT PILASTER DETAIL

NOTES

1. ADDITIONAL CONCRETE AND REINFORCING STEEL REQUIRED FOR THE CONSTRUCTION OF THE PILASTER SHALL MEET THE SAME REQUIREMENTS AS THAT OF THE PARAPET WALL.

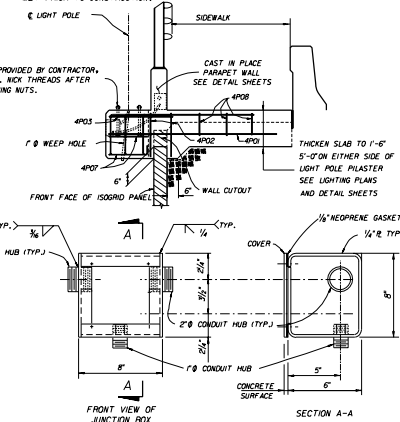
2. TOP OF PILASTER SHALL BE FINISHED TO A TRULY LEVEL AREA.

3. LIGHT POLE PILASTER IS DESIGNED TO RESIST WORKING LOADS IN ANY DIRECTION FROM THE LIGHT POLE APPLIED AT THE TOP OF THE PILASTER AS FOLLOWS:

LONGITUDINAL MOMENT = 30,000 FT. POUND
TRANSVERSE MOMENT = 6,000 FT. POUND
LONGITUDINAL SHEAR = 1,000 POUND
TRANSVERSE SHEAR = 200 POUND
TORSION = 3,000 FT. POUNDS
AXIAL = 400 POUNDS

IF THE LIGHT POLE PROVIDED APPLIES LOADS THAT ARE IN EXCESS OF THOSE SHOWN ABOVE, THE CONTRACTOR SHALL REDESIGN THE PILASTER AND SUBMIT HIS DESIGN TO THE DEPARTMENT FOR REVIEW. THE CONTRACTOR'S REDESIGN SHALL BE PREPARED, SIGNED AND SEALED BY A PROFESSIONAL ENGINEER REGISTERED IN THE STATE OF FLORIDA, AND QUALIFIED TO PERFORM THE WORK.

4. THE CONTRACTOR IS RESPONSIBLE FOR PROVIDING ANCHOR BOLTS THAT EFFECTIVELY TRANSMIT THE LIGHT POLE LOADS TO THE PILASTER AND THAT FIT THE REINFORCING CAGE. CALCULATIONS SIGNED AND SEALED BY A PROFESSIONAL ENGINEER REGISTERED IN THE STATE OF FLORIDA SHALL BE SUBMITTED BY THE CONTRACTOR TO THE DEPARTMENT FOR REVIEW AND APPROVAL SHOWING THAT THESE REQUIREMENTS HAVE BEEN MET PRIOR TO CONSTRUCTION.



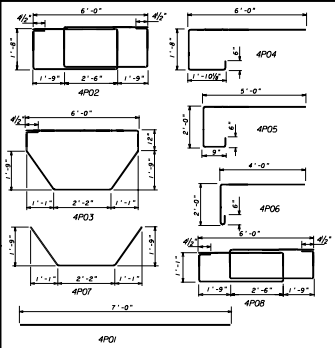
5. STEEL FOR JUNCTION BOXES SHALL CONFORM WITH ASTM-A36. THE BOXES SHALL BE HOT DIP GALVANIZED AFTER FABRICATION. IN LIEU OF STEEL BOXES THE CONTRACTOR MAY SUBMIT FOR APPROVAL MOLDED P.V.C. BOXES (SCHEDULE 80).

6. ALL CONDUITS SHALL BE RIGID GALVANIZED STEEL OR SCHEDULE 80 P.V.C.

7. THE COST OF ANCHOR BOLTS SHALL BE INCLUDED IN THE BID PRICE FOR LIGHT POLES.

8. PAYMENT: THE COST OF ALL LABOR, CONCRETE AND REINFORCING STEEL REQUIRED FOR THE CONSTRUCTION OF THE PILASTERS AND ALL CONDUITS, EXPANSION COUPLINGS, JUNCTION BOXES AND MISCELLANEOUS HARDWARE REQUIRED FOR COMPLETION OF THE ELECTRICAL INSTALLATION WITHIN THE LIMITS SHOWN ON THIS SHEET, SHALL BE INCLUDED IN THE CONTRACTOR'S BID PRICE FOR THE MSE WALLS.

BAR BENDING DIAGRAMS



BILL OF REINFORCING STEEL				
MARK	SIZE	NO. REQ'D	LENGTH	
4P0	4	6	7'-0"	
4P02	4	2	24'-5"	
4P03	4	1	14'-0"	
4P04	4	4	9'-0"	
4P05	4	2	7'-0"	
4P06	4	2	6'-2"	
4P07	4	2	6'-4"	
4P08	4	3	22'-0"	

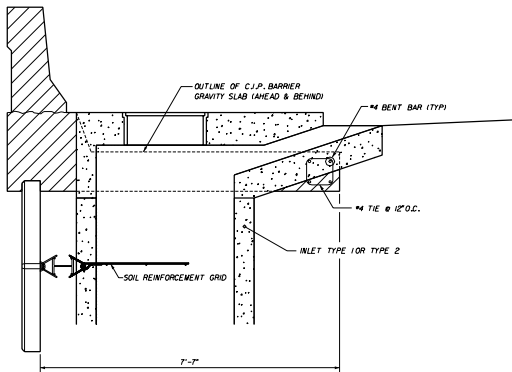
DESIGNER
THE NEEL COMPANY
2830 S. HANCOCK AVE
CLEARWATER BEACH, FLORIDA 33615
PH: (727) 413-3300
FAX: (727) 413-3301

PRECASTER
OLDCASTLE PRECAST, INC.
11640 US HWY 91
CLEARWATER BEACH, FLORIDA 33615
PH: (727) 413-3300
FAX: (727) 413-3301

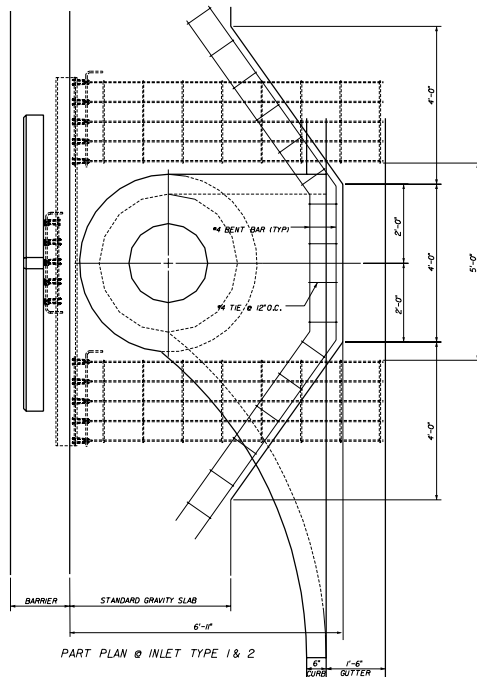
STATE OF FLORIDA DEPARTMENT OF TRANSPORTATION
ROAD DESIGN

RETAINING WALL SYSTEM
THE NEEL COMPANY ISOGRID

Designed By	JMC	DAVIS	Approved By	<i>J.P. Davis</i>
Drawn By	DLA	REVISIONS	DATE REVISIONS	
Checked By	JMC	3/91/96	00	11 of 20 5012



PART SECTION @ INLET TYPE 1 & 2
 NOTE: GRID RELOCATION HARDWARE, SEE SHEET 13 OF 20 FOR DETAILS



PART PLAN @ INLET TYPE 1 & 2

GRAVITY SLAB AT INLET TYPE 1 & 2

DESIGNER



THE NEEL COMPANY

6000 W. HAWTHORNE LANE
 SUITE 1000
 MCKINNEY, TEXAS 75069
 PH: (972) 961-2500
 FX: (972) 961-2501

PRECASTER

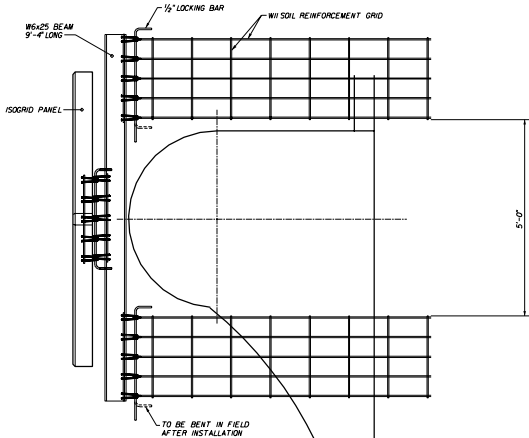
OLDCASTLE PRECAST, INC.

13400 LAMAR STREET
 JACKSONVILLE, FL 32218
 PH: (904) 778-2200
 FX: (904) 778-2202

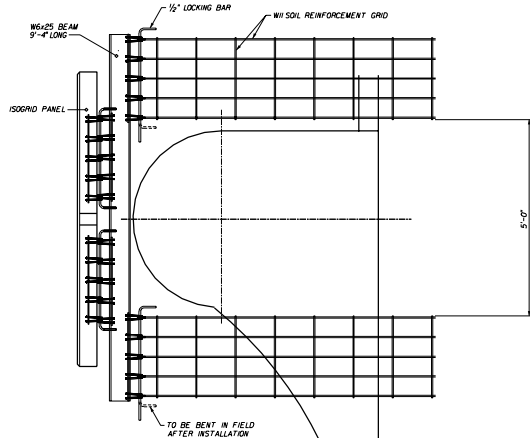
STATE OF FLORIDA DEPARTMENT OF TRANSPORTATION
 ROAD DESIGN

RETAINING WALL SYSTEM
 THE NEEL COMPANY ISOGRID

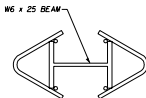
DESIGNED BY	DRAWN BY	CHECKED BY	DATE	APPROVED BY	SCALE	REVISIONS
JNC	SAI	JNC	00	<i>W. Neel</i>		
JNC	SAI	JNC	12		00	5012



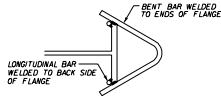
SOIL GRID RELOCATION HARDWARE
FOR SINGLE GRID PANEL
(2 NO. REQUIRED)



SOIL GRID RELOCATION HARDWARE
FOR DOUBLE GRID PANEL
(3 NO. REQUIRED)



SECTION THRU BEAM
(NO SCALE)



LONGITUDINAL BAR
WELDED TO BACK SIDE
OF FLANGE

- NOTES:
1. WELDING:
CONNECTION INSERTS TO BE WELDED
TO W6 x 25 BEAM.
2. GALVANIZATION:
AFTER FABRICATION, BEAM/INSERT ASSEMBLY
TO BE HOT-DIPPED GALVANIZED IN ACCORDANCE
WITH ASTM A125 (AASHTO M11-80)

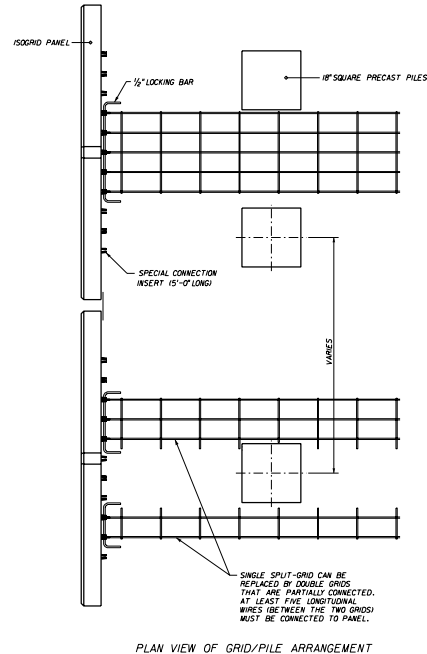
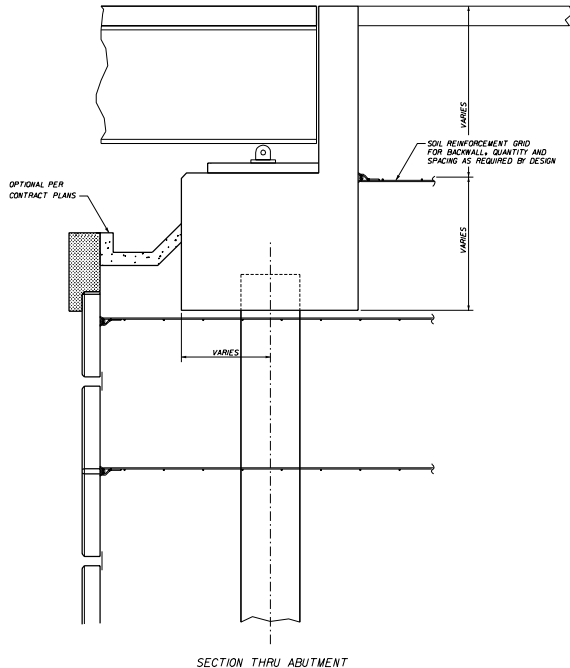
DESIGNER
THE NEEL COMPANY
6280 S HWY 290 W
SPRING HILL, FLORIDA 32122
PH (352) 913-7000
FX (352) 913-7000

PRECASTER
OLDCASTLE PRECAST, INC.
13413 134th STREET
JACKSONVILLE, FL 32018
PH (904) 719-2900
FX (904) 719-2900

STATE OF FLORIDA DEPARTMENT OF TRANSPORTATION
ROAD DESIGN

RETAINING WALL SYSTEM
THE NEEL COMPANY ISOGRID

DESIGNED BY	DRAWN BY	CHECKED BY	DATE	APPROVED BY
JMC	DAK	JMC	00	<i>[Signature]</i>
DATE	SCALE	REVISION		
1/3			13 of 20	5012



DESIGNER:
THE NEEL COMPANY
6262 S. 170TH AVE. SUITE 100
 5000 N.W. 11TH AVENUE SUITE 2075D
 PALM BEACH GARDENS, FL 33411

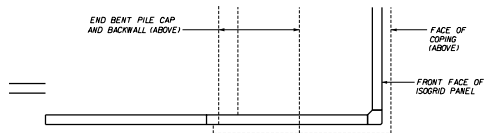
PRECASTER:
OLDCASTLE PRECAST, INC.
13425 HIGHWAY 19E
 JACKSONVILLE, FL 32218
 PALM BEACH GARDENS, FL 33411
 TEL: 561-770-2980

STATE OF FLORIDA DEPARTMENT OF TRANSPORTATION
 ROAD DESIGN

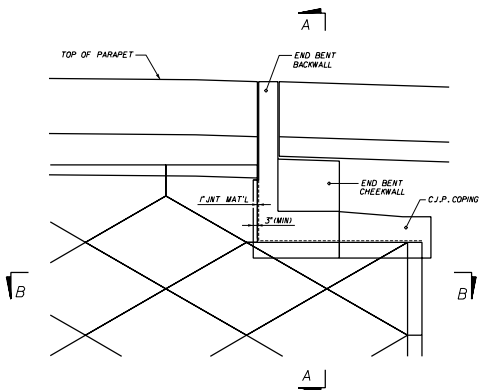
**RETAINING WALL SYSTEM
 THE NEEL COMPANY ISOGRID**

Designed By:	JMC 10/01/10	Approved By:	<i>[Signature]</i>
Drawn By:	CAA 10/01/10	Checked:	00 14 of 20 5012
Checked By:	JMC 10/01/10	Scale:	

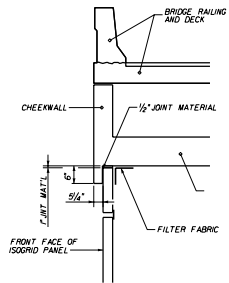
000000000000000000000000000000000000



SECTION B-B
STEM / END BENT PILE INTERFACE



PART ELEVATION SHOWING
WINGWALL / END BENT INTERFACE



SECTION A-A
SECTION THRU PILE CAP

DESIGNER



THE NEEL COMPANY
6250 S. TAMPA LANE
SPRING HILL, FL 34481-2216
PH. (352) 913-1888
FAX (352) 913-1889

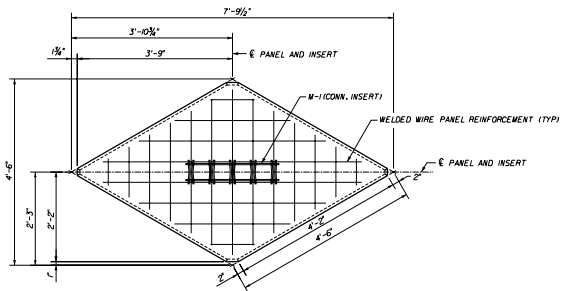
PRECASTER

OLDCASTLE PRECAST, INC.
11805 18TH STREET
JACKSONVILLE, FL 32218
PH. (904) 778-1986
FAX (904) 763-3829

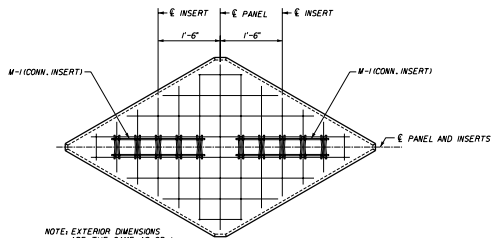
STATE OF FLORIDA DEPARTMENT OF TRANSPORTATION
ROAD DESIGN

RETAINING WALL SYSTEM
THE NEEL COMPANY ISOGRID

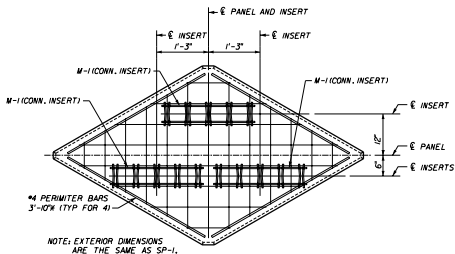
DESIGNED BY	DRAWN BY	CHECKED BY	DATE	APPROVED BY	SCALE	REVISION
JNC	JNC	JNC	00	<i>[Signature]</i>	15 of 20	5012



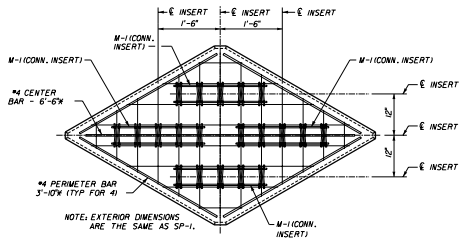
SP-1
FULL-SIZE PANEL - ONE GRID
ELEVATION (REAR FACE)



SP-2
FULL-SIZE PANEL - TWO GRIDS
ELEVATION (REAR FACE)



SP-3
FULL-SIZE PANEL - THREE GRIDS
ELEVATION (REAR FACE)



SP-4
FULL-SIZE PANEL - FOUR GRIDS
ELEVATION (REAR FACE)

DESIGNER
THE NEEL COMPANY
8000 S. WINDFORD LANE
JACKSONVILLE, FL 32216
PH: (904) 778-2900
FAX: (904) 778-2909

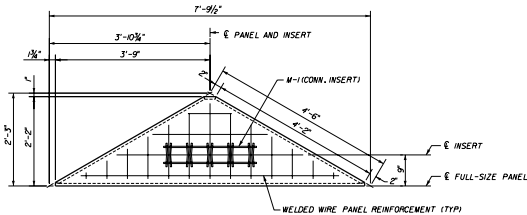
PRECASTER
OLDCASTLE PRECAST, INC.
13848 EDWARDS STREET
JACKSONVILLE, FL 32216
PH: (904) 778-2900
TX: (904) 778-2909

NOTE: FOR MATERIALS NOTES, SEE SHEET 2.

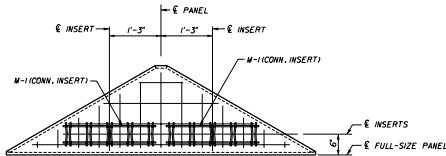
STATE OF FLORIDA DEPARTMENT OF TRANSPORTATION
ROAD DESIGN

RETAINING WALL SYSTEM
THE NEEL COMPANY ISOGRID

DESIGNED BY	CHECKED BY	DATE	APPROVED BY
JMC	JMB/PM	08/16/20	[Signature]
Drawn By	Checked By	Scale	Revised
CAJ	JMB/PM		
Checked By	JMC	08/16/20	5012

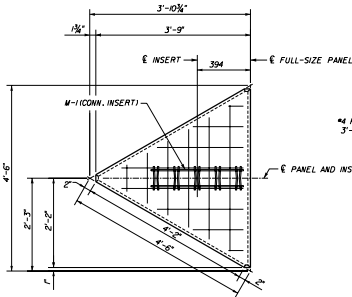


HH-1
 HORIZ.-HALF PANEL - ONE GRID
 ELEVATION (REAR FACE)

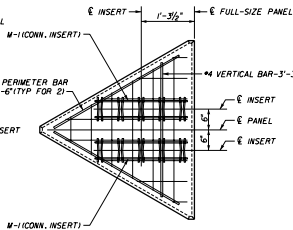


NOTES:
 EXTERIOR DIMENSIONS
 ARE THE SAME AS HH-1

HH-2
 HORIZ.-HALF PANEL - TWO GRIDS
 ELEVATION (REAR FACE)

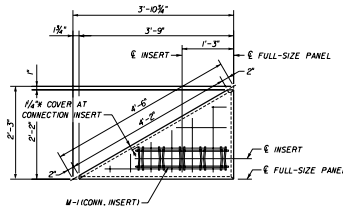


VH-1
 VERT.-HALF PANEL - ONE GRID
 ELEVATION (REAR FACE)

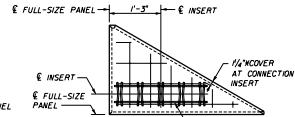


NOTES:
 EXTERIOR DIMENSIONS
 ARE THE SAME AS VH-1

VH-2
 VERT.-HALF PANEL - TWO GRIDS
 ELEVATION (REAR FACE)



QP-R
 TOP RIGHT / BOTTOM LEFT
 QUARTER PANEL - ONE GRID
 ELEVATION (REAR FACE)



NOTES:
 EXTERIOR DIMENSIONS
 ARE THE SAME AS QP-R
 BUT OPPOSITE HAND

QP-L
 TOP LEFT / BOTTOM RIGHT
 QUARTER PANEL - ONE GRID
 ELEVATION (REAR FACE)

DESIGNER



THE NEEL COMPANY
 6002 S 170TH AVE
 MIAMI, FL 33143
 PH: (781) 542 1998
 FX: (781) 542 1998

PRECASTER

OLDCASTLE PRECAST, INC.
 13475 18th STREET
 MIAMI, FL 33186
 PH: (781) 750 7995
 FX: (781) 750 7995

NOTE: FOR MATERIALS NOTES, SEE SHEET 2.

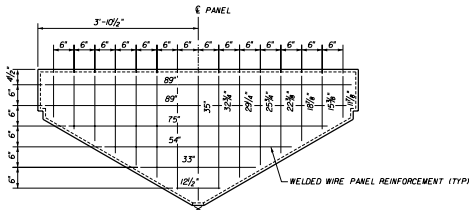
STATE OF FLORIDA DEPARTMENT OF TRANSPORTATION
 ROAD DESIGN

RETAINING WALL SYSTEM
THE NEEL COMPANY ISOGRID

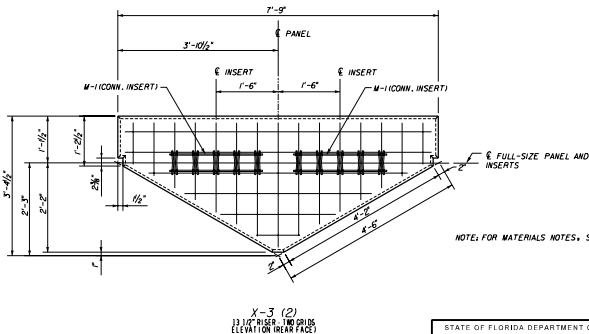
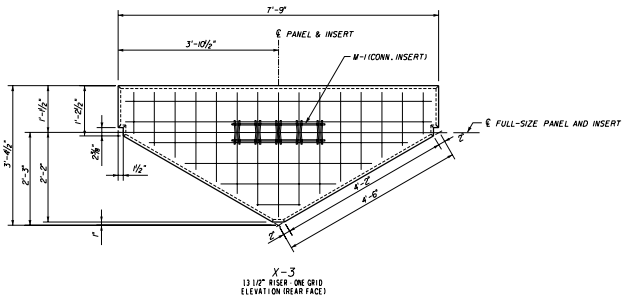
Drawn By	Checked By	Date	Approval
JNC	JNC	03/07/08	<i>[Signature]</i>
JNC	JNC	03/07/08	

Checked By: JNC Date: 03/07/08 00 of 20 5012

00000002002070307000000000
 00000570200000



WELDED WIRE MESH PANEL REINFORCEMENT - X-3 AND X-3(2) PANELS
ELEVATION (REAR FACE)



NOTE: FOR MATERIALS NOTES, SEE SHEET 2.

DESIGNER



THE NEEL COMPANY
2520 S. 74th AVE. SUITE 100
MCKINNAH, FL 32061
PH: (321) 913-4000
FX: (321) 913-3825

PRECASTER

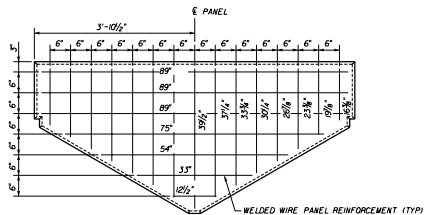
OLDCASTLE PRECAST, INC.
13603 US HWY 90 E
CORCORAN, FL 32110
PH: (904) 776-2900
FX: (904) 776-2900

STATE OF FLORIDA DEPARTMENT OF TRANSPORTATION
ROAD DESIGN

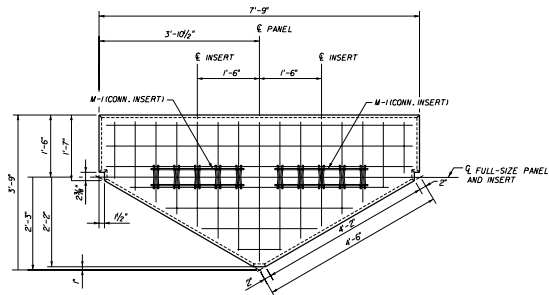
RETAINING WALL SYSTEM
THE NEEL COMPANY ISOGRID

DESIGNED BY	DRAWN BY	CHECKED BY	DATE	APPROVED BY
JMC	CAK	JMC	00	<i>[Signature]</i>
JMC	CAK	JMC	00	
JMC	CAK	JMC	00	
JMC	CAK	JMC	00	

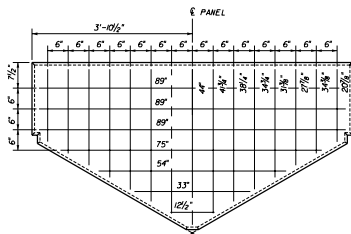
19 of 20 5012



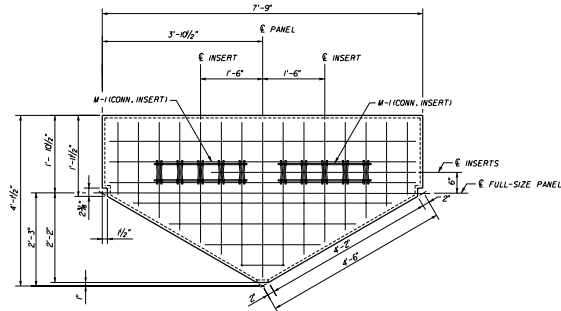
WELDED WIRE MESH PANEL REINFORCEMENT - X-4 PANEL
ELEVATION (REAR FACE)



X-4
18\"/>



WELDED WIRE MESH PANEL REINFORCEMENT - X-5 PANEL
ELEVATION (REAR FACE)



X-5
22 1/2\"/>

NOTE: FOR MATERIALS NOTES, SEE SHEET 2.

DESIGNER:



THE NEEL COMPANY
5200 N. WINDYBROOK LANE
PALM HILLS, FLORIDA 33410
PH: (352) 953-7000
FX: (352) 953-7020

PRECASTER:

OLDCASTLE PRECAST, INC.
13423 LINDENWAY
JACKSONVILLE, FL 32210
PH: (904) 778-2900
FX: (904) 778-2900

STATE OF FLORIDA DEPARTMENT OF TRANSPORTATION
ROAD DESIGN

RETAINING WALL SYSTEM
THE NEEL COMPANY ISOGRID

DESIGNED BY	DRAWN BY	CHECKED BY	DATE	APPROVED BY	SCALE	REVISION
JMC	CAK	JMC	00	<i>[Signature]</i>		
JMC	CAK	JMC	00			
JMC	CAK	JMC	00			

20 of 20 5012