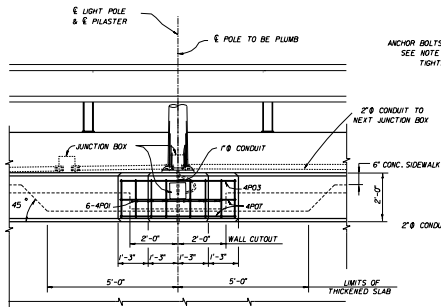
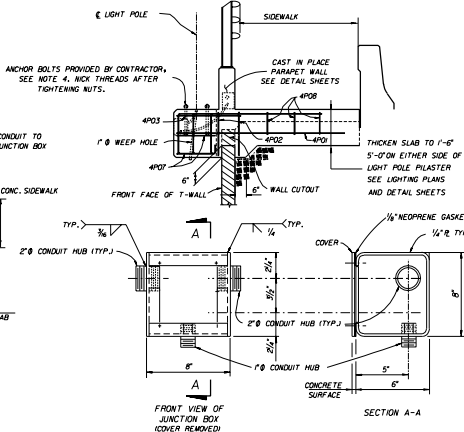


PLAN



LIGHT PLASTER DETAIL



FRONT VIEW OF JUNCTION BOX (COVER REMOVED)

SECTION A-A

NOTES

1. ADDITIONAL CONCRETE AND REINFORCING STEEL REQUIRED FOR THE CONSTRUCTION OF THE PILASTER SHALL MEET THE SAME REQUIREMENTS AS THAT OF THE PARAPET WALL.

2. TOP OF PILASTER SHALL BE FINISHED TO A TRULY LEVEL AREA.

3. LIGHT POLE PILASTER IS DESIGNED TO RESIST WORKING LOADS IN ANY DIRECTION FROM THE LIGHT POLE APPLIED AT THE TOP OF THE PILASTER AS FOLLOWS:

LONGITUDINAL MOMENT	=	30,000 FT. POUND
TRANSVERSE MOMENT	=	6,000 FT. POUND
LONGITUDINAL SHEAR	=	1,000 POUND
TRANSVERSE SHEAR	=	200 POUND
TORSION	=	3,000 FT. POUNDS
AXIAL	=	400 POUNDS

IF THE LIGHT POLE PROVIDED APPLIES LOADS THAT ARE IN EXCESS OF THOSE SHOWN ABOVE, THE CONTRACTOR SHALL REDESIGN THE PILASTER AND SUBMIT HIS DESIGN TO THE DEPARTMENT FOR REVIEW. THE CONTRACTOR'S REDESIGN SHALL BE PREPARED, SIGNED AND SEALED BY A PROFESSIONAL ENGINEER REGISTERED IN THE STATE OF FLORIDA, AND QUALIFIED TO PERFORM THE WORK.

4. THE CONTRACTOR IS RESPONSIBLE FOR PROVIDING ANCHOR BOLTS THAT EFFECTIVELY TRANSMIT THE LIGHT POLE LOADS TO THE PILASTER AND THAT FIT THE REINFORCING CAGE. CALCULATIONS, SIGNED AND SEALED BY A PROFESSIONAL ENGINEER REGISTERED IN THE STATE OF FLORIDA SHALL BE SUBMITTED BY THE CONTRACTOR TO THE DEPARTMENT FOR REVIEW AND APPROVAL SHOWING THAT THESE REQUIREMENTS HAVE BEEN MET PRIOR TO CONSTRUCTION.

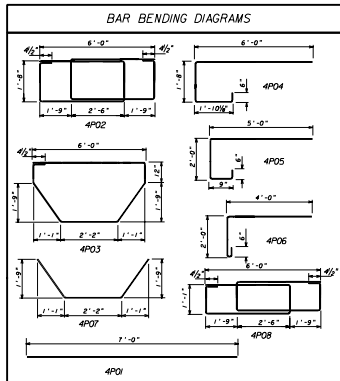
ANCHOR BOLTS PROVIDED BY CONTRACTOR, SEE NOTE 4, NICK THREADS AFTER TIGHTENING NUTS.

5. STEEL FOR JUNCTION BOXES SHALL CONFORM WITH ASTM-A36, THE BOXES SHALL BE HOT DIP GALVANIZED AFTER FABRICATION. IN LIEU OF STEEL BOXES THE CONTRACTOR MAY SUBMIT FOR APPROVAL MOLDED P.V.C. BOXES (SCHEDULE 80).

6. ALL CONDUITS SHALL BE RIGID GALVANIZED STEEL OR SCHEDULE 80 P.V.C.

7. THE COST OF ANCHOR BOLTS SHALL BE INCLUDED IN THE BID PRICE FOR LIGHT POLES.

8. PAYMENTS: THE COST OF ALL LABOR, CONCRETE AND REINFORCING STEEL REQUIRED FOR THE CONSTRUCTION OF THE PILASTERS AND ALL CONDUITS, EXPANSION COUPLERS, JUNCTION BOXES AND MISCELLANEOUS HARDWARE REQUIRED FOR COMPLETION OF THE ELECTRICAL INSTALLATION WITHIN THE LIMITS SHOWN ON THIS SHEET, SHALL BE INCLUDED IN THE CONTRACTOR'S BID PRICE FOR THE WISE WALLS.



MARK	SIZE	NO. REQ'D	LENGTH
4P01	4	6	7'-0"
4P02	4	2	24'-5"
4P03	4	1	14'-9"
4P04	4	4	9'-6"
4P05	4	2	7'-11"
4P06	4	2	6'-2"
4P07	4	2	6'-4"
4P08	4	3	22'-7"

STATE OF FLORIDA DEPARTMENT OF TRANSPORTATION
ROAD DESIGN

RETAINING WALL SYSTEM
THE NEEL COMPANY T-WALL
(2" COVER)

Designed By	JMC	10/1/96	Checked By	DAK	10/1/96	Approved By	[Signature]
Drawn By	DAK	10/1/96	Scale				
Checked By	JMC	10/1/96	CO	12	of 21	5011	

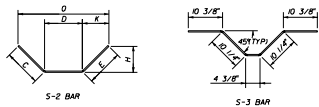
DESIGNER



THE NEEL COMPANY
11400 W. STATE ROAD
MIRAGE, FLORIDA 32150
PH 386/683-9000
FX 386/683-9000

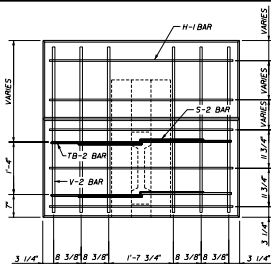
PRECASTER

OLDCASTLE PRECAST, INC.
11400 W. STATE ROAD
MIRAGE, FLORIDA 32150
PH 386/683-9000
FX 386/683-9000

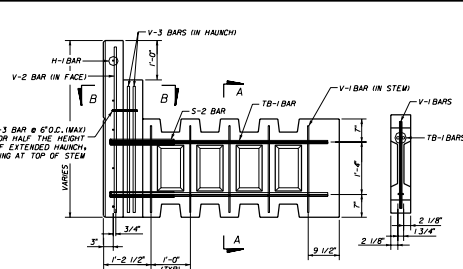


VI. V-2 & V-3 BAR

TB-1 BAR



FRONT VIEW
H-1 BARS IN STEM AND V-3 BARS
IN HAUNCH OMITTED FOR CLARITY



SIDE VIEW

SECTION A-A

REBAR SCHEDULE - 80 x 5.0 x 0 TOP UNIT

BAR#	QTY	SIZE	TYPE	LEN	B	C	D	E	H	K	Z	ANGLE	REMARKS
H-1	4	4	-	4'-0"	-	-	-	-	-	-	-	-	-
V-2	4	6	-	4'-0"	-	-	-	-	-	-	-	-	-
V-3	4	6	-	4'-0"	-	-	-	-	-	-	-	-	-
S-2	4	3	2'-0"	8'-0"	1'-2 3/4"	8'-0"	7'-0"	7'-0"	2'-0"	45	-	-	SEE REBARING DET.
S-3	4	3	3'-3 3/4"	-	-	-	-	-	-	-	-	-	-
TB-1	4	7	0"	1'-2 3/4"	2'-2 3/4"	4'-8 3/4"	-	-	-	-	-	-	90

REBAR SCHEDULE - 80 x 5.0 x 0 TOP UNIT

BAR#	QTY	SIZE	TYPE	LEN	B	C	D	E	H	K	Z	ANGLE	REMARKS
H-1	4	4	-	4'-0"	-	-	-	-	-	-	-	-	-
V-2	4	6	-	4'-0"	-	-	-	-	-	-	-	-	-
V-3	4	6	-	4'-0"	-	-	-	-	-	-	-	-	-
S-2	4	3	2'-0"	8'-0"	1'-2 3/4"	8'-0"	7'-0"	7'-0"	2'-0"	45	-	-	SEE REBARING DET.
S-3	4	3	3'-3 3/4"	-	-	-	-	-	-	-	-	-	-
TB-1	4	7	0"	1'-2 3/4"	2'-2 3/4"	4'-8 3/4"	-	-	-	-	-	-	90

REBAR SCHEDULE - 80 x 5.0 x 0 TOP UNIT

BAR#	QTY	SIZE	TYPE	LEN	B	C	D	E	H	K	Z	ANGLE	REMARKS
H-1	4	4	-	4'-0"	-	-	-	-	-	-	-	-	-
V-2	4	6	-	4'-0"	-	-	-	-	-	-	-	-	-
V-3	4	6	-	4'-0"	-	-	-	-	-	-	-	-	-
S-2	4	3	2'-0"	8'-0"	1'-2 3/4"	8'-0"	7'-0"	7'-0"	2'-0"	45	-	-	SEE REBARING DET.
S-3	4	3	3'-3 3/4"	-	-	-	-	-	-	-	-	-	-
TB-1	4	7	0"	1'-2 3/4"	2'-2 3/4"	4'-8 3/4"	-	-	-	-	-	-	90

REBAR SCHEDULE - 80 x 5.0 x 0 TOP UNIT

BAR#	QTY	SIZE	TYPE	LEN	B	C	D	E	H	K	Z	ANGLE	REMARKS
H-1	4	4	-	4'-0"	-	-	-	-	-	-	-	-	-
V-2	4	6	-	4'-0"	-	-	-	-	-	-	-	-	-
V-3	4	6	-	4'-0"	-	-	-	-	-	-	-	-	-
S-2	4	3	2'-0"	8'-0"	1'-2 3/4"	8'-0"	7'-0"	7'-0"	2'-0"	45	-	-	SEE REBARING DET.
S-3	4	3	3'-3 3/4"	-	-	-	-	-	-	-	-	-	-
TB-1	4	7	0"	1'-2 3/4"	2'-2 3/4"	4'-8 3/4"	-	-	-	-	-	-	90

REBAR SCHEDULE - 80 x 5.0 x 0 TOP UNIT

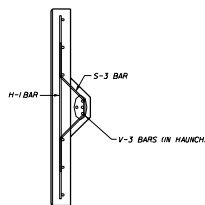
BAR#	QTY	SIZE	TYPE	LEN	B	C	D	E	H	K	Z	ANGLE	REMARKS
H-1	4	4	-	4'-0"	-	-	-	-	-	-	-	-	-
V-2	4	6	-	4'-0"	-	-	-	-	-	-	-	-	-
V-3	4	6	-	4'-0"	-	-	-	-	-	-	-	-	-
S-2	4	3	2'-0"	8'-0"	1'-2 3/4"	8'-0"	7'-0"	7'-0"	2'-0"	45	-	-	SEE REBARING DET.
S-3	4	3	3'-3 3/4"	-	-	-	-	-	-	-	-	-	-
TB-1	4	7	0"	1'-2 3/4"	2'-2 3/4"	4'-8 3/4"	-	-	-	-	-	-	90

REBAR SCHEDULE - 80 x 5.0 x 0 TOP UNIT

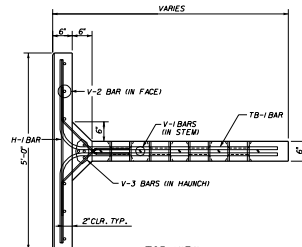
BAR#	QTY	SIZE	TYPE	LEN	B	C	D	E	H	K	Z	ANGLE	REMARKS
H-1	4	4	-	4'-0"	-	-	-	-	-	-	-	-	-
V-2	4	6	-	4'-0"	-	-	-	-	-	-	-	-	-
V-3	4	6	-	4'-0"	-	-	-	-	-	-	-	-	-
S-2	4	3	2'-0"	8'-0"	1'-2 3/4"	8'-0"	7'-0"	7'-0"	2'-0"	45	-	-	SEE REBARING DET.
S-3	4	3	3'-3 3/4"	-	-	-	-	-	-	-	-	-	-
TB-1	4	7	0"	1'-2 3/4"	2'-2 3/4"	4'-8 3/4"	-	-	-	-	-	-	90

REBAR SCHEDULE - 80 x 5.0 x 0 TOP UNIT

BAR#	QTY	SIZE	TYPE	LEN	B	C	D	E	H	K	Z	ANGLE	REMARKS
H-1	4	4	-	4'-0"	-	-	-	-	-	-	-	-	-
V-2	4	6	-	4'-0"	-	-	-	-	-	-	-	-	-
V-3	4	6	-	4'-0"	-	-	-	-	-	-	-	-	-
S-2	4	3	2'-0"	8'-0"	1'-2 3/4"	8'-0"	7'-0"	7'-0"	2'-0"	45	-	-	SEE REBARING DET.
S-3	4	3	3'-3 3/4"	-	-	-	-	-	-	-	-	-	-
TB-1	4	7	0"	1'-2 3/4"	2'-2 3/4"	4'-8 3/4"	-	-	-	-	-	-	90



SECTION B-B



TOP VIEW
S-3 BARS IN EXTENDED HAUNCH 1, ALL UNITS ON THIS SHEET WILL ONLY BE USED BY
APPROVAL OF THE F.D.O.T. STRUCTURES DESIGN
OFFICE ON A PROJECT BY PRODUCT BASIS.

REINFORCING STEEL - TOP UNITS (III)

DESIGNER



THE NEEL COMPANY
5025 S. 170TH AVE
JACKSONVILLE, FL 32218
PH: (904) 963-2000
FX: (904) 963-2000

PRECASTER

OLDCASTLE PRECAST, INC.
11402 DUNDAS BLVD
JACKSONVILLE, FL 32218
PH: (904) 776-2200
FX: (904) 776-2200

NOTE: ALL STEEL REINFORCING BARS SHALL HAVE 2" MIN. CONCRETE COVER

STATE OF FLORIDA DEPARTMENT OF TRANSPORTATION
ROAD DESIGN

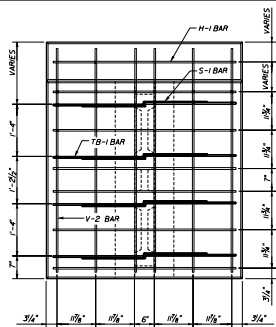
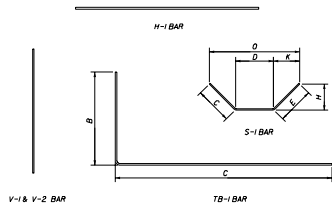
RETAINING WALL SYSTEM
THE NEEL COMPANY T-WALL
(2" COVER)

Drawn By	Checked By	Approved By	Date
JMC	JMC	WJZ	10/21/00
Drawn By	Checked By	Approved By	Date
GA	JMC	WJZ	10/21/00
Checked By	Date		
JMC	10/21/00		

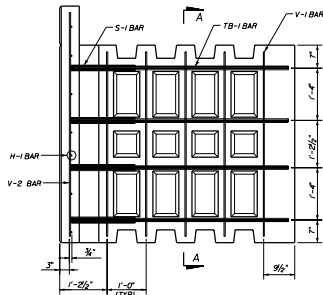
17 of 21

5011

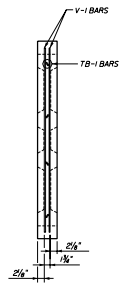
000005702/00000000



FRONT VIEW
N-1 BARS IN STEW OMITTED FOR CLARITY



SIDE VIEW



SECTION A-A

REBAR SCHEDULE - 5.5 x 5.0 x 06 DBL TOP UNIT

MARK	QNTY	SIZE	TYPE	LGTH	B	C	D	E	H	K	O	ANGLE	REMARKS
N-1	6	4	-	4'-6"	-	-	-	-	-	-	-	-	-
V-1	10	3	-	4'-6"	-	-	-	-	-	-	-	-	-
V-2	6	5	-	5'-0"	-	-	-	-	-	-	-	-	-
S-1	8	3	3	2'-9 3/4"	11/8"	11/8"	11/8"	8"	8"	8"	2'-3 3/4"	45	-
TB-1	8	5	7	7'-8 1/2"	2'-3 1/2"	5'-6 1/2"	-	-	-	-	-	90	-

REBAR SCHEDULE - 6.0 x 5.0 x 06 DBL TOP UNIT

MARK	QNTY	SIZE	TYPE	LGTH	B	C	D	E	H	K	O	ANGLE	REMARKS
N-1	7	4	-	4'-6"	-	-	-	-	-	-	-	-	-
V-1	10	3	-	4'-6"	-	-	-	-	-	-	-	-	-
V-2	6	5	-	5'-0"	-	-	-	-	-	-	-	-	-
S-1	8	3	3	2'-9 3/4"	11/8"	11/8"	11/8"	8"	8"	8"	2'-3 3/4"	45	-
TB-1	8	5	7	7'-8 1/2"	2'-3 1/2"	5'-6 1/2"	-	-	-	-	-	90	-

REBAR SCHEDULE - 6.5 x 5.0 x 06 DBL TOP UNIT

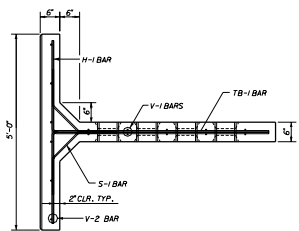
MARK	QNTY	SIZE	TYPE	LGTH	B	C	D	E	H	K	O	ANGLE	REMARKS
N-1	7	4	-	4'-6"	-	-	-	-	-	-	-	-	-
V-1	10	3	-	4'-6"	-	-	-	-	-	-	-	-	-
V-2	6	5	-	5'-0"	-	-	-	-	-	-	-	-	-
S-1	8	3	3	2'-9 3/4"	11/8"	11/8"	11/8"	8"	8"	8"	2'-3 3/4"	45	-
TB-1	8	5	7	7'-8 1/2"	2'-3 1/2"	5'-6 1/2"	-	-	-	-	-	90	-

REBAR SCHEDULE - 7.0 x 5.0 x 06 DBL TOP UNIT

MARK	QNTY	SIZE	TYPE	LGTH	B	C	D	E	H	K	O	ANGLE	REMARKS
N-1	8	4	-	4'-6"	-	-	-	-	-	-	-	-	-
V-1	10	3	-	4'-6"	-	-	-	-	-	-	-	-	-
V-2	6	5	-	5'-0"	-	-	-	-	-	-	-	-	-
S-1	8	3	3	2'-9 3/4"	11/8"	11/8"	11/8"	8"	8"	8"	2'-3 3/4"	45	-
TB-1	8	5	7	7'-8 1/2"	2'-3 1/2"	5'-6 1/2"	-	-	-	-	-	90	-

REBAR SCHEDULE - 7.5 x 5.0 x 06 DBL TOP UNIT

MARK	QNTY	SIZE	TYPE	LGTH	B	C	D	E	H	K	O	ANGLE	REMARKS
N-1	8	4	-	4'-6"	-	-	-	-	-	-	-	-	-
V-1	10	3	-	4'-6"	-	-	-	-	-	-	-	-	-
V-2	6	5	-	7'-0"	-	-	-	-	-	-	-	-	-
S-1	8	3	3	2'-9 3/4"	11/8"	11/8"	11/8"	8"	8"	8"	2'-3 3/4"	45	-
TB-1	8	5	7	7'-8 1/2"	2'-3 1/2"	5'-6 1/2"	-	-	-	-	-	90	-



TOP VIEW
REINFORCING STEEL - DOUBLE TOP UNITS (I)

NOTE: ALL STEEL REINFORCING BARS SHALL HAVE 2" MIN. CONCRETE COVER

DESIGNER:
THE NEEL COMPANY
5020 W. 10TH AVE.
CORP. OFFICE, FT. LAUDERDALE, FL 33304
TEL: (754) 941-1000
FAX: (754) 941-1000

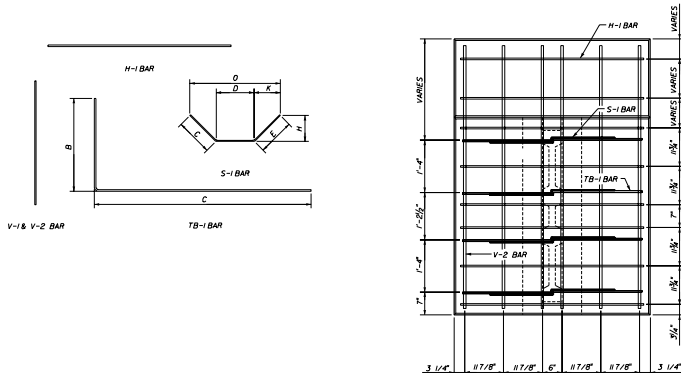
PRECASTER:
OLDCASTLE PRECAST, INC.
15403 154TH STREET
CORCORAN, FL 32110
TEL: (754) 941-1000
FAX: (754) 941-1000

STATE OF FLORIDA DEPARTMENT OF TRANSPORTATION
ROAD DESIGN

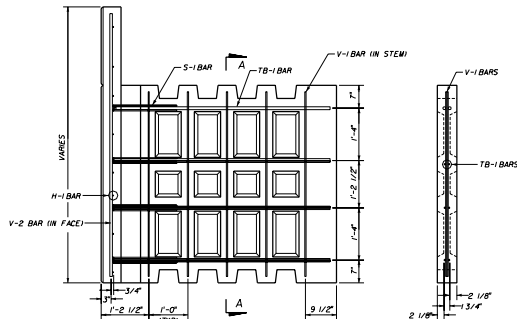
**RETAINING WALL SYSTEM
THE NEEL COMPANY T-WALL
(2" COVER)**

DESIGNED BY	JMC	DATE	03/01/06	APPROVED BY	<i>[Signature]</i>
DRAWN BY	GAJ	DATE	03/01/06	CHECKED BY	JMC
CHECKED BY	JMC	DATE	03/01/06	NO. OF SHEETS	19 of 21

5011



FRONT VIEW
(H-1 BARS OMITTED FOR CLARITY)



SIDE VIEW

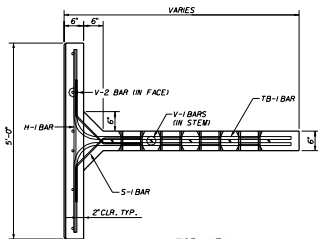
SECTION A-A

REBAR SCHEDULE - 8.0 x 5.0 x DB OBL TOP UNIT													
MARK	QTY	SIZE	TYPE	LGTH	B	C	D	E	H	K	O	ANGLE	REMARKS
H-1	9	4	-	4'-6"								-	
V-1	14	3	-	4'-6"								-	
V-2	6	6	-	7'-6"								-	
S-1	8	3	3	2'-9"	9"	1'-3"	9"	5 3/8"	5 3/8"	2'-1 1/2"		45	
TB-1	8	6	17	9'-8 1/2"	2'-3 1/2"	7'-6 1/2"						90	

REBAR SCHEDULE - 8.5 x 5.0 x DB OBL TOP UNIT													
MARK	QTY	SIZE	TYPE	LGTH	B	C	D	E	H	K	O	ANGLE	REMARKS
H-1	9	4	-	4'-6"								-	
V-1	14	3	-	4'-6"								-	
V-2	6	6	-	8'-0"								-	
S-1	8	3	3	2'-9"	9"	1'-3"	9"	5 3/8"	5 3/8"	2'-1 1/2"		45	
TB-1	8	6	17	9'-8 1/2"	2'-3 1/2"	7'-6 1/2"						90	

REBAR SCHEDULE - 9.0 x 5.0 x DB OBL TOP UNIT													
MARK	QTY	SIZE	TYPE	LGTH	B	C	D	E	H	K	O	ANGLE	REMARKS
H-1	10	4	-	4'-6"								-	
V-1	14	3	-	4'-6"								-	
V-2	6	6	-	9'-0"								-	
S-1	8	3	3	2'-9"	9"	1'-3"	9"	5 3/8"	5 3/8"	2'-1 1/2"		45	
TB-1	8	6	17	9'-8 1/2"	2'-3 1/2"	7'-6 1/2"						90	

REBAR SCHEDULE - 9.5 x 5.0 x DB OBL TOP UNIT													
MARK	QTY	SIZE	TYPE	LGTH	B	C	D	E	H	K	O	ANGLE	REMARKS
H-1	10	4	-	4'-6"								-	
V-1	14	3	-	4'-6"								-	
V-2	6	6	-	9'-0"								-	
S-1	8	3	3	2'-9"	9"	1'-3"	9"	5 3/8"	5 3/8"	2'-1 1/2"		45	
TB-1	8	6	17	9'-8 1/2"	2'-3 1/2"	7'-6 1/2"						90	



TOP VIEW
REINFORCING STEEL - DOUBLE TOP UNITS (III)

THESE TWO UNITS WILL ONLY BE USED BY APPROVAL OF THE F.D.D.T. STRUCTURES DESIGN OFFICE ON A PROJECT BY PROJECT BASIS.

DESIGNER:



THE NEEL COMPANY
8000 S. 110th AVE. UNIT 100
MIRAGE, FL 33150
PH: (305) 913-1800
FAX: (305) 913-1800

PRECASTER:

OLDCASTLE PRECAST, INC.
11602 15th STREET
MCKINLEY, FL 32010
PH: (904) 241-1100
FAX: (904) 778-2390

NOTE: ALL STEEL REINFORCING BARS SHALL HAVE 2" MIN. CONCRETE COVER

STATE OF FLORIDA DEPARTMENT OF TRANSPORTATION
ROAD DESIGN

RETAINING WALL SYSTEM
THE NEEL COMPANY T-WALL
(2" COVER)

Drawn By	Checked By	Approved By	Date
JMC	JMC	<i>[Signature]</i>	01/16/06
DAK	JMC		01/16/06
JMC	JMC		01/16/06

00 20 of 21 5011

00000577AC000000

