

SECTION SHOWING TYPICAL DETAILS
(NOT ALL DETAILS APPLY TO EACH WALL)

NOTE: ALL EXTENDED FACE TOP UNITS REQUIRE
A MINIMUM OF TWO SHEAR KEYS. ALL OTHER UNITS
ARE AS SHOWN BELOW:

- TOP UNITS - 2 SHEAR KEYS
- 6' STEM - 2 SHEAR KEYS
- 8' STEM - 2 SHEAR KEYS
- 10' STEM - 2 SHEAR KEYS
- 12' STEM - 2 SHEAR KEYS
- 14' STEM - 3 SHEAR KEYS
- 16' STEM - 3 SHEAR KEYS

PART ELEVATION SHOWING TYPICAL DETAILS
(NO SCALE)

DESIGNER
THE NEEL COMPANY
3100 N. UNIVERSITY BLVD.
SUITE 201
BOCA RATON, FL 33433
PH 1 (561) 372-2800
FH 1 (561) 372-2899

PRECASTER
OLDCASTLE PRECAST, INC.
15601 BIRCHMOUNT
BOCA RATON, FL 33430
PH 1 (561) 756-2900
FH 1 (561) 756-2990

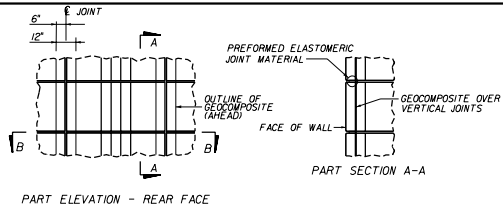
STATE OF FLORIDA DEPARTMENT OF TRANSPORTATION
ROAD DESIGN

RETAINING WALL SYSTEM THE NEEL COMPANY T-WALL (2" COVER)

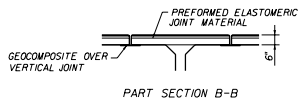
Revised	Drawn	Approved By
03/01/19	JMC	[Signature]
03/01/19	JMC	STATE REGISTERED CIVIL ENGINEER
03/01/19	GAN	CHECKED BY
03/01/19	JMC	00

2 of 21 5011

*****NOT FOR CONSTRUCTION*****
00000577/NC22000



PART ELEVATION - REAR FACE



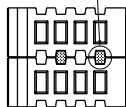
PART SECTION B-B

JOINT MATERIAL DETAILS

NOTES:

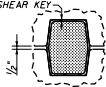
- HORIZONTAL JOINT:
1/2" x 4" x 5'-0" PREFORMED ELASTOMERIC JOINT MATERIAL
- VERTICAL JOINT:
1/2" SPACE
12" WIDE GEOCOMPOSITE BACKING, CENTERED ABOUT JOINT CENTERLINE.

SHEAR KEY WRAPPED IN JOINT MATERIAL. SEE DETAILS THIS SHEET.



PART SECTION

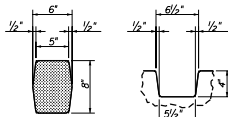
1/4" JOINT MATERIAL ALL AROUND SHEAR KEY



SHEAR KEY / JOINT MATERIAL ARRANGEMENT

NOTES:

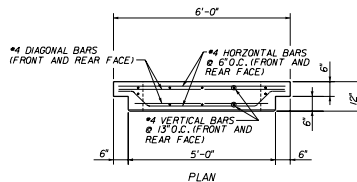
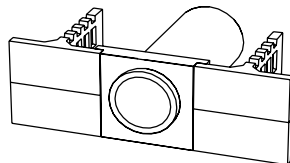
- SHEAR KEY JOINT MATERIAL: MINIMUM OF ONE 1/4" x 8" x 24" PIECE OF AVI ASTRO-FOAM AF-250 PER SHEAR KEY.
- JOINT MATERIAL MAY BE ADDED OR REMOVED TO AID IN SHIMMING AND ALIGNING. HOWEVER, SHEAR KEY MUST FIT SNUG IN THE SHEAR KEY BLOCKOUT WHEN UNIT IS IN ITS FINAL POSITION.
- MINIMUM OF 2 SHEAR KEYS REQUIRED PER UNIT. SEE NOTES ON SHEET 2 OF 2, TYPICAL DETAILS (U).



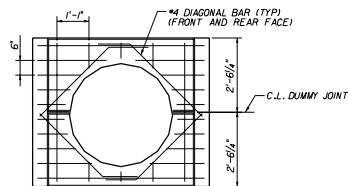
SHEAR KEY DIMENSIONS

SHEAR KEY BLOCKOUT DIM'S

SHEAR KEY DETAILS



PLAN



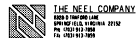
ELEVATION (FRONT FACE)
PRECAST HEADWALL PANEL FOR LARGE DIAMETER PIPES

STATE OF FLORIDA DEPARTMENT OF TRANSPORTATION
ROAD DESIGN

RETAINING WALL SYSTEM
THE NEEL COMPANY T-WALL
(2" COVER)

DESIGNED BY	DRAWN BY	CHECKED BY	DATE	APPROVED BY				
INC	INC	INC	00	<i>[Signature]</i>				
DATE	DATE	DATE						
3/21/00	3/21/00	3/21/00						
<table border="0" style="width:100%"> <tr> <td style="text-align:right">Checked By: INC</td> <td style="text-align:right">Date: 3/21/00</td> <td style="text-align:right">Sheet No. 3 of 21</td> <td style="text-align:right">Job No. 5011</td> </tr> </table>					Checked By: INC	Date: 3/21/00	Sheet No. 3 of 21	Job No. 5011
Checked By: INC	Date: 3/21/00	Sheet No. 3 of 21	Job No. 5011					

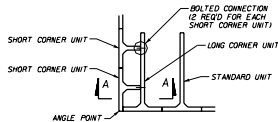
DESIGNER:



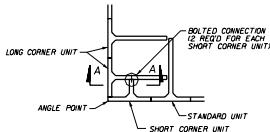
THE NEEL COMPANY
4800 S. HUNTERS LANE
GREENWICH, GA 30330
Ph: (404) 776-2000
Fz: (404) 776-2000

PRECASTER:

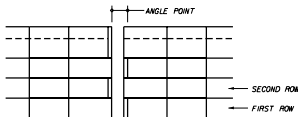
OLDCASTLE PRECAST, INC.
11803 165th STREET
GREENWICH, GA 30338
Ph: (404) 776-2000
Fz: (404) 776-2000



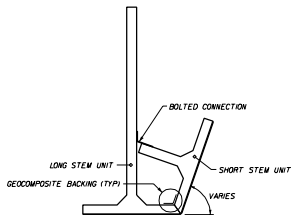
PART PLAN - FIRST ROW



PART PLAN - SECOND ROW

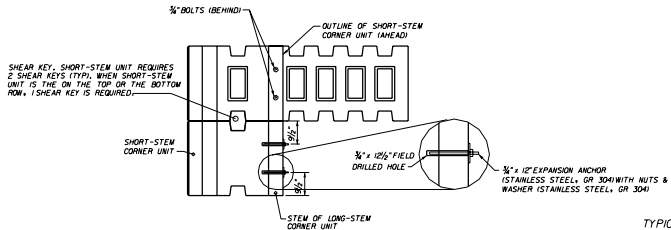


PART ELEVATION

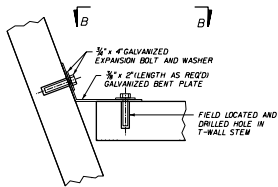


PART PLAN - ANGLE > 90°

SHORT AND LONG STEMS ALTERNATE
PER 90° CORNER DETAIL

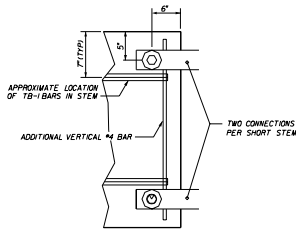


TYPICAL CORNER UNIT ARRANGEMENT
STEM LENGTHS VARY - SEE SPECIFIC
ELEVATIONS FOR PROPER UNITS
NO SCALE



TYPICAL BOLTED CONNECTION FOR ANGLE POINTS > 90°

TYPICAL ANGLE POINT DETAIL
NO SCALE



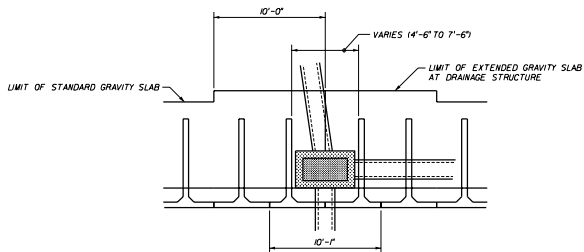
VIEW B-B



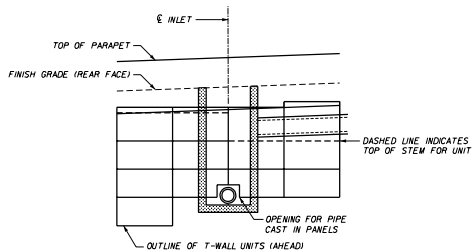
DESIGNER
THE NEEL COMPANY
8280 S. 106TH AVE
MIAMI, FL 33156-2612
PH: 781-325-2000
FX: 781-325-2000

PRECASTER
OLDCASTLE PRECAST, INC.
11822 125th STREET
CORNWALL, FL 32910
PH: 888-375-2900
FX: 888-375-2900

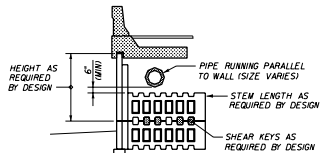
STATE OF FLORIDA DEPARTMENT OF TRANSPORTATION ROAD DESIGN					
RETAINING WALL SYSTEM THE NEEL COMPANY T-WALL (2" COVER)					
DESIGNED BY	JMC	DATE	06/01/00	APPROVED BY	<i>[Signature]</i>
DRAWN BY	DAW	DATE	06/01/00	CHECKED BY	JMC
CHECKED BY	JMC	DATE	06/01/00	NO	4 of 21 5011



PART PLAN



PART ELEVATION (FRONT FACE)



SECTION
(SHOWING PIPE PARALLEL TO WALL)

DESIGNER



THE NEEL COMPANY
 5000 W. 170th Street
 Spring Hill, FL 34481-0114 21512
 Ph: (352) 912-1000
 Fax: (352) 912-1000

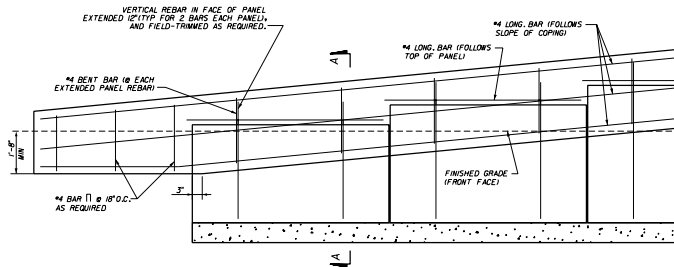
PRECASTER

OLDCASTLE PRECAST, INC.
 15423 32nd Street
 Jacksonville, FL 32218
 Ph: (904) 770-2900
 Fax: (904) 770-2900

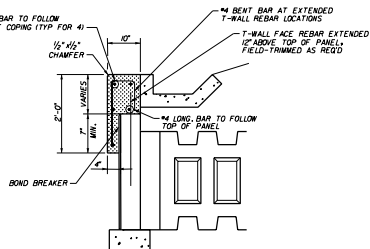
STATE OF FLORIDA DEPARTMENT OF TRANSPORTATION
 ROAD DESIGN

**RETAINING WALL SYSTEM
 THE NEEL COMPANY T-WALL
 (2" COVER)**

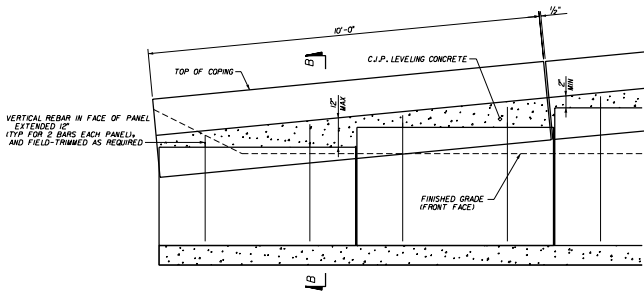
DESIGNED BY	DATE	APPROVED BY	SCALE	REVISIONS
JMC	3/8/19	<i>[Signature]</i>		
DRAWN BY	CAA	DATE	6 of 21	5011
CHECKED BY	JMC	DATE		



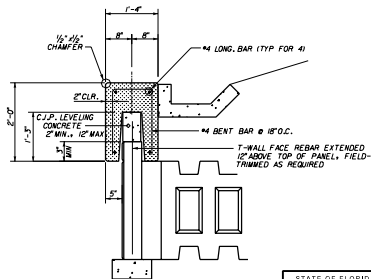
C.J.P. COPING TREATMENT AT BEGINNING/END OF WALLS



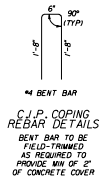
SECTION A-A
C.J.P. COPING



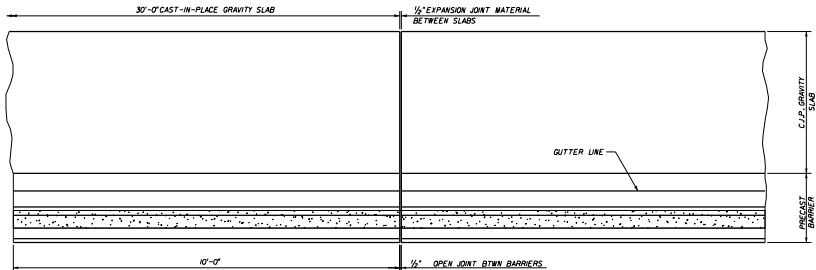
PRECAST COPING - PART ELEVATION



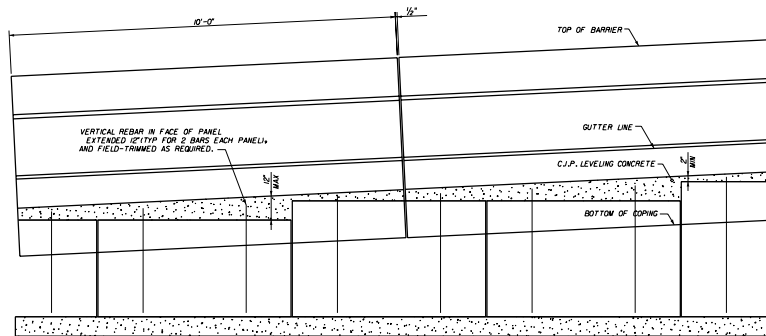
SECTION B-B
PRECAST COPING



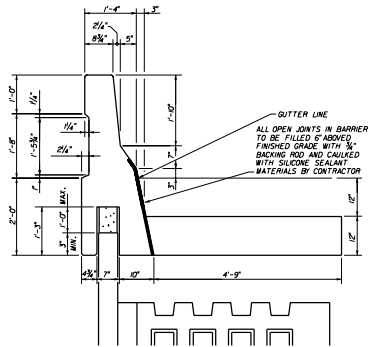
STATE OF FLORIDA DEPARTMENT OF TRANSPORTATION ROAD DESIGN			
RETAINING WALL SYSTEM THE NEEL COMPANY T-WALL (2" COVER)			
Designed By	JMC / 08/19/06	Approved By	<i>W. J. ...</i>
Drawn By	GAJ / 08/19/06	Checked By	JMC / 08/19/06
Sheet No.	00	7 of 21	5011



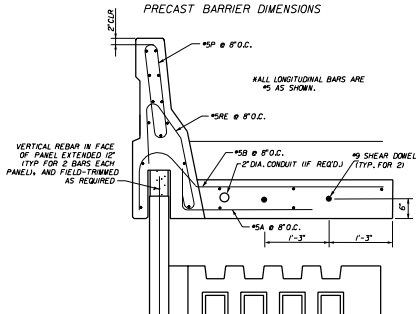
PART PLAN - PRECAST BARRIER



PART ELEVATION - PRECAST BARRIER



PRECAST BARRIER DIMENSIONS



PRECAST BARRIER REBAR

STATE OF FLORIDA DEPARTMENT OF TRANSPORTATION
ROAD DESIGN

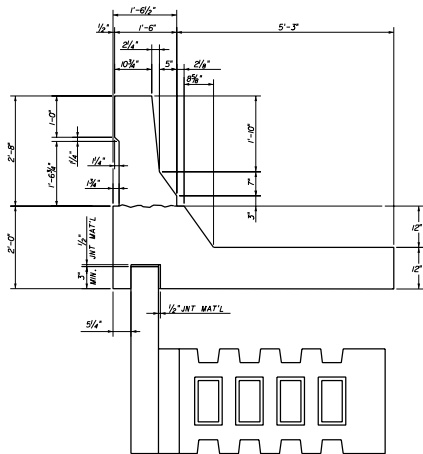
RETAINING WALL SYSTEM
THE NEEL COMPANY T-WALL
(2" COVER)

DESIGNED BY	CHECKED BY	DATE	APPROVED BY	DATE
JNC	JNC	08/18/19	(Signature)	08/21/19
DAW	JNC	08/19/19	00	8 of 21
JNC	JNC	08/19/19		5011

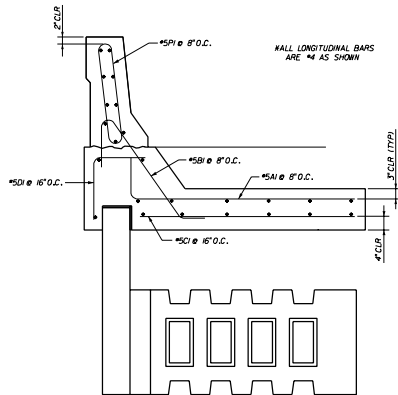


THE NEEL COMPANY
5232 S. 130th AVE.
JUPITER, FL 33414
PH: 561-744-3322
FX: 561-744-3300

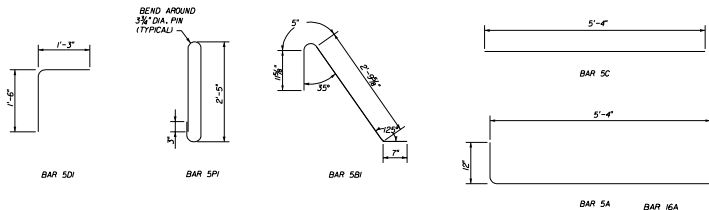
OLDCASTLE PRECAST, INC.
13802 124th STREET
JUPITER, FL 33414
PH: 561-744-3322
FX: 561-744-3300



C.J.P. BARRIER AND C.J.P. JUNCTION SLAB DIMENSIONS



C.J.P. BARRIER AND C.J.P. JUNCTION SLAB REBAR




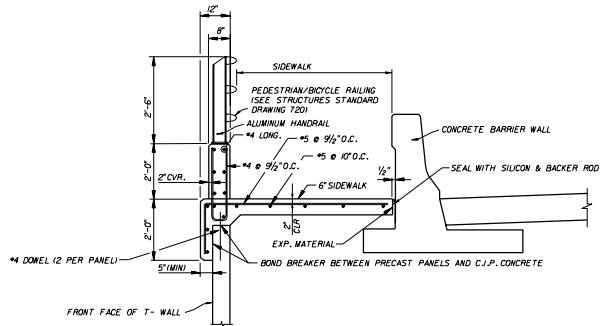
C.J.P. BARRIER REBAR DETAILS

DESIGNER

THE NEEL COMPANY
 2225 W. 194TH AVE.
 SUITE 100, FT. LAUDERDALE, FL 33312
 Ph: (760) 913-1200
 Fa: (760) 913-1200

PRECASTER
OLDCASTLE PRECAST, INC.
 13403 S.W. 17TH AVE.
 JACKSONVILLE, FL 32218
 Ph: (904) 778-7900
 Fa: (904) 778-7900

STATE OF FLORIDA DEPARTMENT OF TRANSPORTATION ROAD DESIGN			
RETAINING WALL SYSTEM THE NEEL COMPANY T-WALL (2" COVER)			
DESIGNED BY	JMC	DATE	08/17/00
DRAWN BY	SAK	CHECKED BY	SEAN DAVIS
CHECKED BY	JMC	DATE	08/17/00
APPROVED BY			
TITLE		RETAINING WALL SYSTEM ENGINEER	
PROJECT NO.		00	
SHEET NO.		9 of 21	
DATE		5/01/11	



C.J.P. PARAPET DETAIL W/ HANDRAIL

DESIGNER:



THE NEEL COMPANY
 6225 N. THUNDERBOLT LANE
 8749 HOPKINS LANE
 PALM HARBOR, FL 34683
 TEL: 888.963.7858
 FAX: 888.963.7859

PRECASTER:

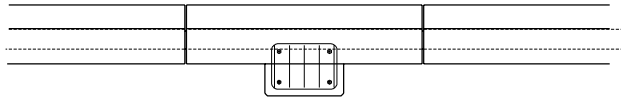
OLDCASTLE PRECAST, INC.
 13433 EDWARDS STREET
 JACKSONVILLE, FL 32218
 TEL: 904.778.2946
 FAX: 904.778.2946

STATE OF FLORIDA DEPARTMENT OF TRANSPORTATION
 ROAD DESIGN

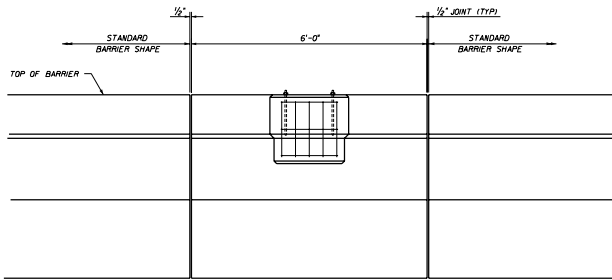
**RETAINING WALL SYSTEM
 THE NEEL COMPANY T-WALL
 (2" COVER)**

DESIGNED BY	DRAWN BY	CHECKED BY	DATE	APPROVED BY
JMC	DAK	JMC	10/21/11	<i>W. J. [Signature]</i>
JMC	DAK	JMC	10/21/11	
JMC	DAK	JMC	10/21/11	

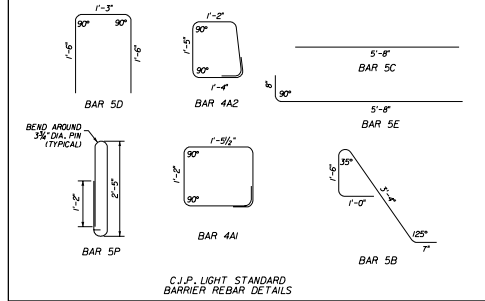
10 of 21 5011



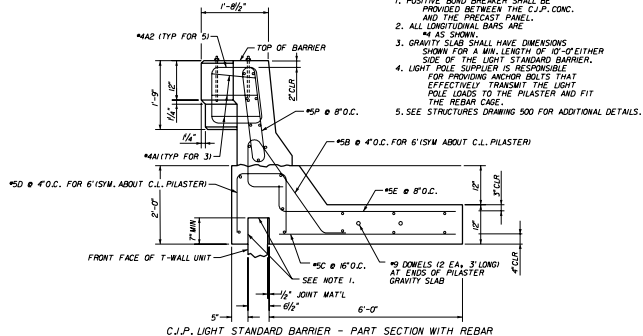
C.J.P. LIGHT STANDARD BARRIER - PART PLAN WITH REBAR
(BARRIER AND GRAVITY SLAB REBAR OMITTED FOR CLARITY)



C.J.P. LIGHT STANDARD BARRIER - PART ELEVATION
(BARRIER AND GRAVITY SLAB REBAR OMITTED FOR CLARITY)



C.J.P. LIGHT STANDARD BARRIER REBAR DETAILS



C.J.P. LIGHT STANDARD BARRIER - PART SECTION WITH REBAR

- NOTES
- POSITIVE BOND BREAKER SHALL BE PROVIDED BETWEEN THE C.J.P. CONC. AND THE PRECAST PANEL.
 - ALL LONGITUDINAL BARS ARE #4 AS SHOWN.
 - GRAVITY SLAB SHALL HAVE DIMENSIONS SHOWN FOR A MIN. LENGTH OF 10'-0" EITHER SIDE OF THE LIGHT STANDARD BARRIER.
 - LIGHT POLE SUPPLIER IS RESPONSIBLE FOR PROVIDING ANCHOR BOLTS THAT EFFECTIVELY TRANSMIT THE LIGHT POLE LOADS TO THE PILASTER AND FIT THE REBAR CAGE.
 - SEE STRUCTURES DRAWING 500 FOR ADDITIONAL DETAILS.

DESIGNER
THE NEEL COMPANY
 2160 S. 25th AVENUE
 GAINESVILLE, FL 32609
 PH: 352-382-1900
 FX: 352-382-2000

PRECASTER
OLDCASTLE PRECAST, INC.
 13405 STATE STREET
 GAINESVILLE, FL 32609
 PH: 352-382-1900
 FX: 352-382-2000

STATE OF FLORIDA DEPARTMENT OF TRANSPORTATION
 ROAD DESIGN

RETAINING WALL SYSTEM
 THE NEEL COMPANY T-WALL
 (2" COVER)

Designed By	JMC	Checked By	JMC	Approved By	<i>W. J. [Signature]</i>
Drawn By	CSA	Scale	As Shown	Revision	00
Checked By	JMC	Date	11 of 21	Sheet No.	5011