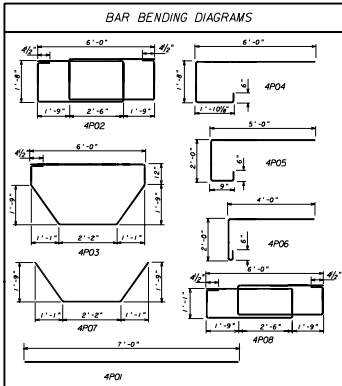


NOTES

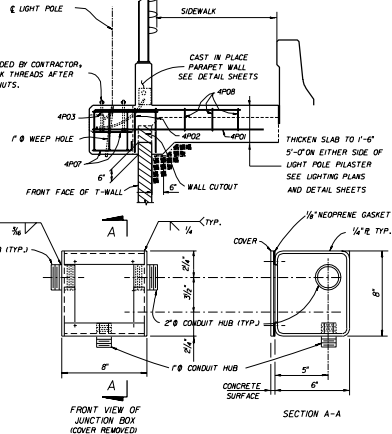
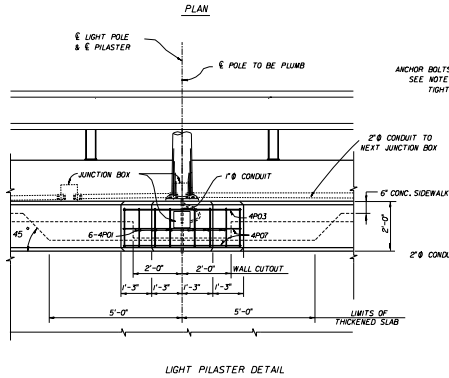
- ADDITIONAL CONCRETE AND REINFORCING STEEL REQUIRED FOR THE CONSTRUCTION OF THE PILASTER SHALL MEET THE SAME REQUIREMENTS AS THAT OF THE PARAPET WALL.
- TOP OF PILASTER SHALL BE FINISHED TO A TRULY LEVEL AREA.
- LIGHT POLE PILASTER IS DESIGNED TO RESIST WORKING LOADS (IN ANY DIRECTION) FROM THE LIGHT POLE APPLIED AT THE TOP OF THE PILASTER AS FOLLOWS:
 LONGITUDINAL MOMENT = 30,000 FT. POUND
 TRANSVERSE MOMENT = 6,000 FT. POUND
 LONGITUDINAL SHEAR = 1,000 POUND
 TRANSVERSE SHEAR = 200 POUND
 TORSION = 3,000 FT. POUNDS
 AXIAL = 400 POUNDS
 IF THE LIGHT POLE PROVIDED APPLIES LOADS THAT ARE IN EXCESS OF THOSE SHOWN ABOVE, THE CONTRACTOR SHALL REDESIGN THE PILASTER AND SUBMIT HIS DESIGN TO THE DEPARTMENT FOR REVIEW. THE CONTRACTOR'S REDESIGN SHALL BE PREPARED, SIGNED AND SEALED BY A PROFESSIONAL ENGINEER REGISTERED IN THE STATE OF FLORIDA, AND QUALIFIED TO PERFORM THE WORK.
- THE CONTRACTOR IS RESPONSIBLE FOR PROVIDING ANCHOR BOLTS THAT EFFECTIVELY TRANSMIT THE LIGHT POLE LOADS TO THE PILASTER AND THAT FIT THE REINFORCING CAGE. CALCULATIONS SIGNED AND SEALED BY A PROFESSIONAL ENGINEER REGISTERED IN THE STATE OF FLORIDA SHALL BE SUBMITTED BY THE CONTRACTOR TO THE DEPARTMENT FOR REVIEW AND APPROVAL SHOWING THAT THESE REQUIREMENTS HAVE BEEN MET PRIOR TO CONSTRUCTION.

- STEEL FOR JUNCTION BOXES SHALL CONFORM WITH ASTM-A36. THE BOXES SHALL BE HOT DIP GALVANIZED AFTER FABRICATION. IN USE OF STEEL BOXES THE CONTRACTOR MAY SUBMIT FOR APPROVAL MOULDED P.V.C. BOXES (SCHEDULE 80).
- ALL CONDUITS SHALL BE RIGID GALVANIZED STEEL OR SCHEDULE 80 P.V.C.
- THE COST OF ANCHOR BOLTS SHALL BE INCLUDED IN THE BID PRICE FOR LIGHT POLES.
- PAYMENT OF THE COST OF ALL LABOR, CONCRETE AND REINFORCING STEEL REQUIRED FOR THE CONSTRUCTION OF THE PILASTERS AND ALL CONDUITS, EXPANSION COUPLINGS, JUNCTION BOXES AND MISCELLANEOUS HARDWARE REQUIRED FOR COMPLETION OF THE ELECTRICAL INSTALLATION WITHIN THE LIMITS SHOWN ON THIS SHEET, SHALL BE INCLUDED IN THE CONTRACTOR'S BID PRICE FOR THE WIRE WALLS.



BILL OF REINFORCING STEEL

MARK	SIZE	NO. REQ'D	LENGTH
4P01	4	6	7'-0"
4P02	4	2	24'-5"
4P03	4	1	14'-9"
4P04	4	4	9'-8"
4P05	4	2	7'-8"
4P06	4	2	6'-2"
4P07	4	2	6'-4"
4P08	4	3	22'-1"



LIGHT PILASTER DETAIL

THE NEEL COMPANY
 6400 S. 170th DR. LAKELAND, FL 33803
 PHONE (813) 943-1100 FAX (813) 943-1101

OLDCASTLE PRECAST, INC.
 11840 154th ST. SE. ALBUQUERQUE, N.M. 87116
 PHONE (505) 776-2900 FAX (505) 776-2902

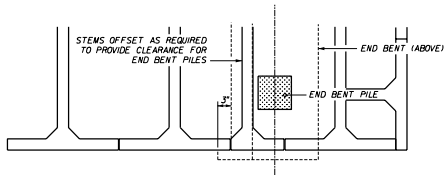
STATE OF FLORIDA DEPARTMENT OF TRANSPORTATION
 ROAD DESIGN

**RETAINING WALL SYSTEM
 THE NEEL COMPANY T-WALL
 (3" COVER)**

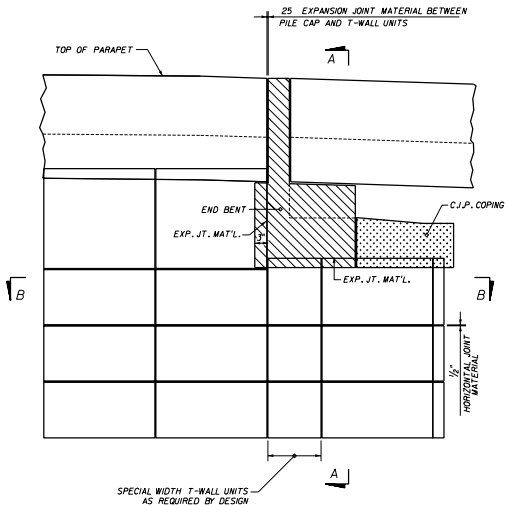
DESIGNED BY: JAC 02/99
 DRAWN BY: CAJ 02/99
 CHECKED BY: JAC 02/99

APPROVED BY: [Signature]
 DATE: 02/99

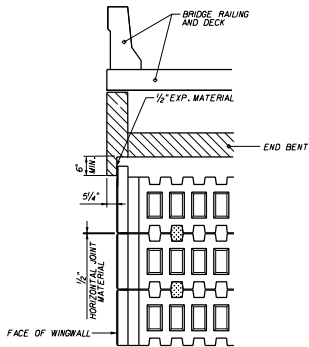
11 of 20 5010



SECTION B-B
STEM / END BENT PILE INTERFACE



PART ELEVATION SHOWING
WINGWALL / END BENT INTERFACE



SECTION A-A
SECTION THRU PILE CAP



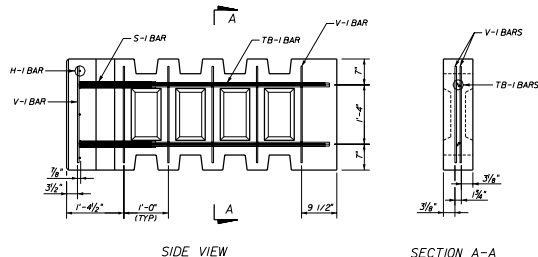
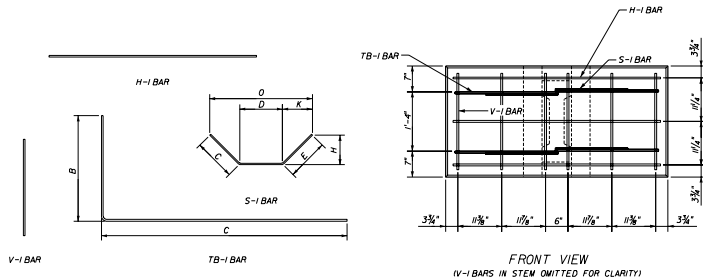
THE NEEL COMPANY
 6250 S. 174th AVE. UNIT 100
 MIAMI GARDENS, FLORIDA 33149
 PH. (305) 963-1700
 FX. (305) 963-1900

OLDCASTLE PRECAST, INC.
 13443 132nd STREET
 JACKSONVILLE, FL 32218
 PH. (904) 778-2900
 FX. (904) 778-2900

STATE OF FLORIDA DEPARTMENT OF TRANSPORTATION
ROAD DESIGN

RETAINING WALL SYSTEM
THE NEEL COMPANY T-WALL
(3" COVER)

DESIGNED BY	DATE	APPROVED BY	SCALE	REVISION
		<i>[Signature]</i>		
DRAWN BY			00	12 of 20
CHECKED BY				5010



REBAR SCHEDULE - 2.5 x 5.0 x 04 STD UNIT

MARK	QNTY	SIZE	TYPE	LGTH	B	C	D	E	H	K	O	ANGLE	REMARKS
H-1	3	4	-	4'-6"	-	-	-	-	-	-	-	-	-
V-1	12	3	-	2'-0"	-	-	-	-	-	-	-	-	-
S-1	4	3	3	2'-9 7/8"	11 1/4"	11 1/4"	11 1/4"	8"	8"	8"	2'-3 3/4"	45	-
TB-1	4	4	17	5'-8 1/2"	2'-3 1/2"	3'-6 1/2"	-	-	-	-	-	90	-

REBAR SCHEDULE - 2.5 x 5.0 x 06 STD UNIT

MARK	QNTY	SIZE	TYPE	LGTH	B	C	D	E	H	K	O	ANGLE	REMARKS
H-1	3	4	-	4'-6"	-	-	-	-	-	-	-	-	-
V-1	16	3	-	2'-0"	-	-	-	-	-	-	-	-	-
S-1	4	3	3	2'-9 7/8"	11 1/4"	11 1/4"	11 1/4"	8"	8"	8"	2'-3 3/4"	45	-
TB-1	4	4	17	7'-8 1/2"	2'-3 1/2"	5'-6 1/2"	-	-	-	-	-	90	-

REBAR SCHEDULE - 2.5 x 5.0 x 08 STD UNIT

MARK	QNTY	SIZE	TYPE	LGTH	B	C	D	E	H	K	O	ANGLE	REMARKS
H-1	3	4	-	4'-6"	-	-	-	-	-	-	-	-	-
V-1	20	3	-	2'-0"	-	-	-	-	-	-	-	-	-
S-1	4	3	3	2'-9 7/8"	11 1/4"	11 1/4"	11 1/4"	8"	8"	8"	2'-3 3/4"	45	-
TB-1	4	4	17	9'-8 1/2"	2'-3 1/2"	7'-6 1/2"	-	-	-	-	-	90	-

REBAR SCHEDULE - 2.5 x 5.0 x 10 STD UNIT

MARK	QNTY	SIZE	TYPE	LGTH	B	C	D	E	H	K	O	ANGLE	REMARKS
H-1	3	4	-	4'-6"	-	-	-	-	-	-	-	-	-
V-1	24	3	-	2'-0"	-	-	-	-	-	-	-	-	-
S-1	4	3	3	2'-9 7/8"	11 1/4"	11 1/4"	11 1/4"	8"	8"	8"	2'-3 3/4"	45	-
TB-1	4	4	17	11'-8 1/2"	2'-3 1/2"	9'-6 1/2"	-	-	-	-	-	90	-

REBAR SCHEDULE - 2.5 x 5.0 x 12 STD UNIT

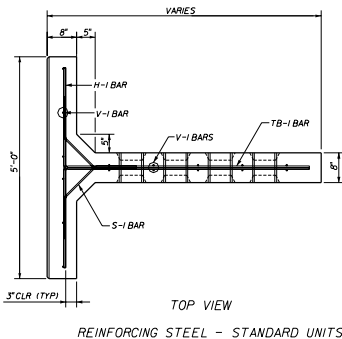
MARK	QNTY	SIZE	TYPE	LGTH	B	C	D	E	H	K	O	ANGLE	REMARKS
H-1	3	4	-	4'-6"	-	-	-	-	-	-	-	-	-
V-1	28	3	-	2'-0"	-	-	-	-	-	-	-	-	-
S-1	4	3	3	2'-9 7/8"	11 1/4"	11 1/4"	11 1/4"	8"	8"	8"	2'-3 3/4"	45	-
TB-1	4	4	17	13'-8 1/2"	2'-3 1/2"	11'-6 1/2"	-	-	-	-	-	90	-

REBAR SCHEDULE - 2.5 x 5.0 x 14 STD UNIT

MARK	QNTY	SIZE	TYPE	LGTH	B	C	D	E	H	K	O	ANGLE	REMARKS
H-1	3	4	-	4'-6"	-	-	-	-	-	-	-	-	-
V-1	32	3	-	2'-0"	-	-	-	-	-	-	-	-	-
S-1	4	3	3	2'-9 7/8"	11 1/4"	11 1/4"	11 1/4"	8"	8"	8"	2'-3 3/4"	45	-
TB-1	4	4	17	15'-8 1/2"	2'-3 1/2"	13'-6 1/2"	-	-	-	-	-	90	-

REBAR SCHEDULE - 2.5 x 5.0 x 16 STD UNIT

MARK	QNTY	SIZE	TYPE	LGTH	B	C	D	E	H	K	O	ANGLE	REMARKS
H-1	3	4	-	4'-6"	-	-	-	-	-	-	-	-	-
V-1	36	3	-	2'-0"	-	-	-	-	-	-	-	-	-
S-1	4	3	3	2'-9 7/8"	11 1/4"	11 1/4"	11 1/4"	8"	8"	8"	2'-3 3/4"	45	-
TB-1	4	4	17	17'-8 1/2"	2'-3 1/2"	15'-6 1/2"	-	-	-	-	-	90	-



NOTE: ALL STEEL REINFORCING BARS SHALL HAVE 3" MIN. CONCRETE COVER



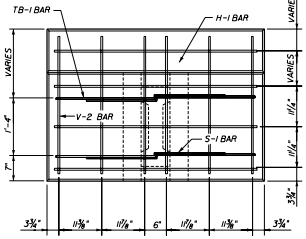
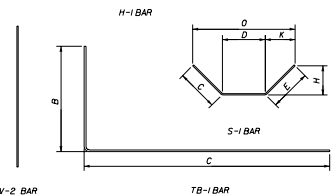
THE NEEL COMPANY
6220 N 17th Ave
GROVE CITY, FL 32706
PH: (407) 913-1700
FX: (407) 913-1700

OLDCASTLE PRECAST, INC.
11651 16th STREET
OLDCASTLE, FL 32068
PH: (407) 716-2900
FX: (407) 716-2900

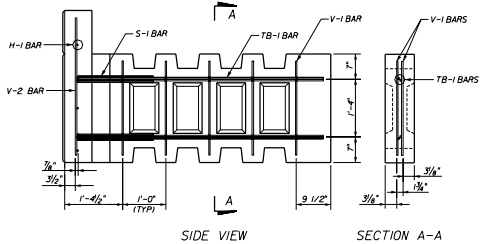
STATE OF FLORIDA DEPARTMENT OF TRANSPORTATION
ROAD DESIGN

RETAINING WALL SYSTEM
THE NEEL COMPANY T-WALL
(3" COVER)

Drawn By	Checked By	Approved By	Date
JAC	CM	WJZ	00
Checked By	JAC	00	13 of 20
Scale	AS SHOWN	Sheet No.	5010



FRONT VIEW
V-I BARS IN STEM OMITTED FOR CLARITY



SIDE VIEW
SECTION A-A

REBAR SCHEDULE - 3.0 x 5.0 x 04 TOP UNIT

MARK	QNTY	SIZE	TYPE	LGTH	B	C	D	E	H	K	O	ANGLE	REMARKS
H-1	4	4	-	4'-8"								-	
V-1	6	3	-	2'-0"								-	
V-2	6	5	-	2'-0"								-	
S-1	4	3	3	2'-3 3/4"				1 1/4"	1 1/4"	8"	8"	2'-3 3/4"	45
TB-1	4	4	11	5'-8 1/2"	2'-3 1/2"	3'-6 1/2"							90

REBAR SCHEDULE - 3.0 x 5.0 x 06 TOP UNIT

MARK	QNTY	SIZE	TYPE	LGTH	B	C	D	E	H	K	O	ANGLE	REMARKS
H-1	4	4	-	4'-8"								-	
V-1	6	3	-	2'-0"								-	
V-2	6	5	-	2'-0"								-	
S-1	4	3	3	2'-3 3/4"				1 1/4"	1 1/4"	8"	8"	2'-3 3/4"	45
TB-1	4	4	11	7'-8 1/2"	2'-3 1/2"	3'-6 1/2"							90

REBAR SCHEDULE - 3.5 x 5.0 x 04 TOP UNIT

MARK	QNTY	SIZE	TYPE	LGTH	B	C	D	E	H	K	O	ANGLE	REMARKS
H-1	5	4	-	4'-8"								-	
V-1	6	3	-	2'-0"								-	
V-2	6	5	-	3'-0"								-	
S-1	4	3	3	2'-3 3/4"				1 1/4"	1 1/4"	8"	8"	2'-3 3/4"	45
TB-1	4	4	11	7'-8 1/2"	2'-3 1/2"	3'-6 1/2"							90

REBAR SCHEDULE - 3.5 x 5.0 x 06 TOP UNIT

MARK	QNTY	SIZE	TYPE	LGTH	B	C	D	E	H	K	O	ANGLE	REMARKS
H-1	5	4	-	4'-8"								-	
V-1	6	3	-	2'-0"								-	
V-2	6	5	-	3'-0"								-	
S-1	4	3	3	2'-3 3/4"				1 1/4"	1 1/4"	8"	8"	2'-3 3/4"	45
TB-1	4	4	11	7'-8 1/2"	2'-3 1/2"	3'-6 1/2"							90

REBAR SCHEDULE - 4.0 x 5.0 x 04 TOP UNIT

MARK	QNTY	SIZE	TYPE	LGTH	B	C	D	E	H	K	O	ANGLE	REMARKS
H-1	5	4	-	4'-8"								-	
V-1	6	3	-	2'-0"								-	
V-2	6	5	-	3'-0"								-	
S-1	4	3	3	2'-3 3/4"				1 1/4"	1 1/4"	8"	8"	2'-3 3/4"	45
TB-1	4	4	11	5'-8 1/2"	2'-3 1/2"	3'-6 1/2"							90

REBAR SCHEDULE - 4.0 x 5.0 x 06 TOP UNIT

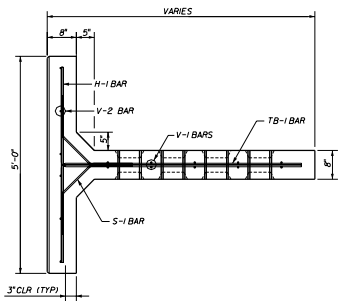
MARK	QNTY	SIZE	TYPE	LGTH	B	C	D	E	H	K	O	ANGLE	REMARKS
H-1	5	4	-	4'-8"								-	
V-1	6	3	-	2'-0"								-	
V-2	6	5	-	3'-0"								-	
S-1	4	3	3	2'-3 3/4"				1 1/4"	1 1/4"	8"	8"	2'-3 3/4"	45
TB-1	4	4	11	7'-8 1/2"	2'-3 1/2"	3'-6 1/2"							90

REBAR SCHEDULE - 4.5 x 5.0 x 06 TOP UNIT

MARK	QNTY	SIZE	TYPE	LGTH	B	C	D	E	H	K	O	ANGLE	REMARKS
H-1	6	4	-	4'-8"								-	
V-1	6	3	-	2'-0"								-	
V-2	6	5	-	4'-0"								-	
S-1	4	3	3	2'-3 3/4"				1 1/4"	1 1/4"	8"	8"	2'-3 3/4"	45
TB-1	4	4	11	7'-8 1/2"	2'-3 1/2"	3'-6 1/2"							90

REBAR SCHEDULE - 5.0 x 5.0 x 06 TOP UNIT

MARK	QNTY	SIZE	TYPE	LGTH	B	C	D	E	H	K	O	ANGLE	REMARKS
H-1	6	4	-	4'-8"								-	
V-1	6	3	-	2'-0"								-	
V-2	6	5	-	4'-0"								-	
S-1	4	3	3	2'-3 3/4"				1 1/4"	1 1/4"	8"	8"	2'-3 3/4"	45
TB-1	4	4	11	7'-8 1/2"	2'-3 1/2"	3'-6 1/2"							90



TOP VIEW
REINFORCING STEEL - TOP UNITS (1)

NOTE: ALL STEEL REINFORCING BARS SHALL HAVE 3" MIN. CONCRETE COVER

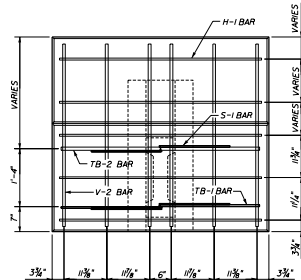
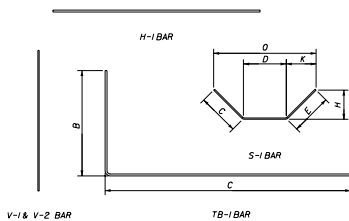
THE NEEL COMPANY **OLDCASTLE PRECAST, INC.**
 1940 W. 118th Ave. 1940 W. 118th Ave.
 ORLANDO, FL 32817 ORLANDO, FL 32817
 PH: (407) 931-7880 PH: (407) 931-7880
 FAX: (407) 931-7880 FAX: (407) 931-7880

STATE OF FLORIDA DEPARTMENT OF TRANSPORTATION
ROAD DESIGN

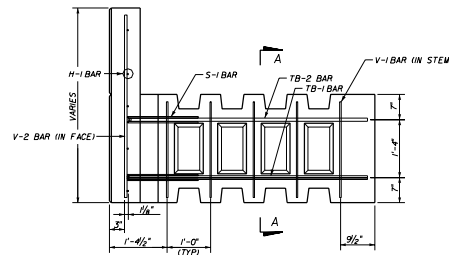
RETAINING WALL SYSTEM
THE NEEL COMPANY T-WALL
(3" COVER)

Drawn By: **JAC** Date: **01/08** Approved By: *[Signature]*
 Checked By: **CMA** Date: **01/08** Date: **14 of 20** **5010**

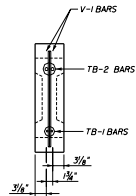
988899028P017/01/08000000
000057/AC000000



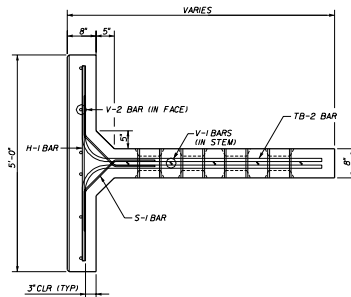
FRONT VIEW
(V-1 BARS IN STEM OMITTED FOR CLARITY)



SIDE VIEW



SECTION A-A



TOP VIEW
REINFORCING STEEL - TOP UNITS (II)

REBAR SCHEDULE - 5.5 x 5.0 x OB TOP UNIT

MARK	QTY	SIZE	TYPE	LGTH	B	C	D	E	H	K	O	ANGLE	REMARKS
H-1	6	4	-	4'-6"								-	-
V-1	4	3	-	2'-0"								-	-
V-2	6	6	-	5'-0"								-	-
S-1	4	3	3	2'-9"		9"	1'-3"	9"	5 3/8"	5 3/8"	2'-1 3/8"	45	
TB-1	4	6	17	9'-8 1/2"	2'-3 1/2"	7'-6 1/2"						90	

REBAR SCHEDULE - 6.0 x 5.0 x OB TOP UNIT

MARK	QTY	SIZE	TYPE	LGTH	B	C	D	E	H	K	O	ANGLE	REMARKS
H-1	7	4	-	4'-6"								-	-
V-1	4	3	-	2'-0"								-	-
V-2	6	6	-	5'-0"								-	-
S-1	4	3	3	2'-9"		9"	1'-3"	9"	5 3/8"	5 3/8"	2'-1 3/8"	45	
TB-1	4	6	17	9'-8 1/2"	2'-3 1/2"	7'-6 1/2"						90	

REBAR SCHEDULE - 6.5 x 5.0 x OB TOP UNIT

MARK	QTY	SIZE	TYPE	LGTH	B	C	D	E	H	K	O	ANGLE	REMARKS
H-1	8	4	-	4'-6"								-	-
V-1	4	3	-	2'-0"								-	-
V-2	6	6	-	5'-0"								-	-
S-1	4	3	3	2'-9"		9"	1'-3"	9"	5 3/8"	5 3/8"	2'-1 3/8"	45	
TB-1	4	6	17	9'-8 1/2"	2'-3 1/2"	7'-6 1/2"						90	

REBAR SCHEDULE - 7.0 x 5.0 x OB TOP UNIT

MARK	QTY	SIZE	TYPE	LGTH	B	C	D	E	H	K	O	ANGLE	REMARKS
H-1	9	4	-	4'-6"								-	-
V-1	4	3	-	2'-0"								-	-
V-2	6	6	-	5'-0"								-	-
S-1	4	3	3	2'-9"		9"	1'-3"	9"	5 3/8"	5 3/8"	2'-1 3/8"	45	
TB-1	4	6	17	9'-8 1/2"	2'-3 1/2"	7'-6 1/2"						90	

THESE UNITS WILL ONLY BE USED BY
APPROVAL OF THE F.D.O.T. STRUCTURES DESIGN
OFFICE ON A PROJECT BY PROJECT BASIS.

NOTE: ALL STEEL REINFORCING BARS SHALL HAVE 3" MIN. CONCRETE COVER



THE NEEL COMPANY
8226 S. FORT MEADOW LANE
JACKSONVILLE, FL 32218
PH: (904) 963-7888
TX: (904) 963-7889

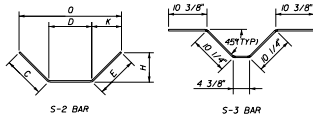
OLDCASTLE PRECAST, INC.
13843 COUNTY ROAD 1
JACKSONVILLE, FL 32216
PH: (904) 776-2990
TX: (904) 776-2991

STATE OF FLORIDA DEPARTMENT OF TRANSPORTATION
ROAD DESIGN

RETAINING WALL SYSTEM
THE NEEL COMPANY T-WALL
(3" COVER)

Drawn By	Checked By	QC	DATE	APPROVED BY	DATE
JAC	JAC		09/29	(Signature)	12/24/20
CM	CM		09/29	(Signature)	12/24/20
JAC	JAC		09/29		00

15 of 20 5010



V1, V-2 & V-3 BAR

TB-1 BAR

REBAR SCHEDULE - 7.5 x 5.0 x 0 TOP UNIT													
MARK	QTY	SIZE	TYPE	LGTH	B	C	D	E	H	K	D	ANGLE	REMARKS
H-1	8	4	-	4'-6"	-	-	-	-	-	-	-	-	-
V-1	8	3	-	2'-0"	-	-	-	-	-	-	-	-	-
V-2	6	6	-	7'-0"	-	-	-	-	-	-	-	-	-
V-3	4	6	-	6'-0"	-	-	-	-	-	-	-	-	-
S-2	4	3	3	2'-0"	Ø 3/4"	1'-2 3/8"	Ø 3/8"	7 1/2"	7 1/2"	2'-0"	Ø 5/8"	45	-
S-3	4	3	3	2'-3 3/8"	-	-	-	-	-	-	-	-	SEE BENDING DTL.
TB-1	4	7	Ø	12'-7 1/2"	2'-2 1/4"	Ø 6 3/8"	-	-	-	-	-	-	90

REBAR SCHEDULE - 8.0 x 5.0 x 0 TOP UNIT													
MARK	QTY	SIZE	TYPE	LGTH	B	C	D	E	H	K	D	ANGLE	REMARKS
H-1	8	4	-	4'-6"	-	-	-	-	-	-	-	-	-
V-1	8	3	-	2'-0"	-	-	-	-	-	-	-	-	-
V-2	6	6	-	7'-0"	-	-	-	-	-	-	-	-	-
V-3	4	6	-	7'-0"	-	-	-	-	-	-	-	-	-
S-2	4	3	3	2'-0"	Ø 3/4"	1'-2 3/8"	Ø 3/8"	7 1/2"	7 1/2"	2'-0"	Ø 5/8"	45	-
S-3	4	3	3	2'-3 3/8"	-	-	-	-	-	-	-	-	SEE BENDING DTL.
TB-1	4	7	Ø	12'-7 1/2"	2'-2 1/4"	Ø 6 3/8"	-	-	-	-	-	-	90

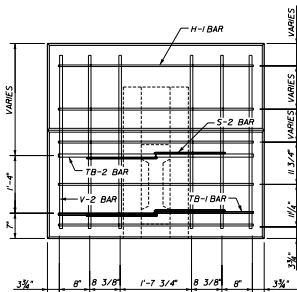
REBAR SCHEDULE - 8.5 x 5.0 x 0 TOP UNIT													
MARK	QTY	SIZE	TYPE	LGTH	B	C	D	E	H	K	D	ANGLE	REMARKS
H-1	8	4	-	4'-6"	-	-	-	-	-	-	-	-	-
V-1	8	3	-	2'-0"	-	-	-	-	-	-	-	-	-
V-2	6	6	-	7'-0"	-	-	-	-	-	-	-	-	-
V-3	4	6	-	7'-0"	-	-	-	-	-	-	-	-	-
S-2	4	3	3	2'-0"	Ø 3/4"	1'-2 3/8"	Ø 3/8"	7 1/2"	7 1/2"	2'-0"	Ø 5/8"	45	-
S-3	4	3	3	2'-3 3/8"	-	-	-	-	-	-	-	-	SEE BENDING DTL.
TB-1	4	7	Ø	12'-7 1/2"	2'-2 1/4"	Ø 6 3/8"	-	-	-	-	-	-	90

REBAR SCHEDULE - 9.0 x 5.0 x 0 TOP UNIT													
MARK	QTY	SIZE	TYPE	LGTH	B	C	D	E	H	K	D	ANGLE	REMARKS
H-1	8	4	-	4'-6"	-	-	-	-	-	-	-	-	-
V-1	8	3	-	2'-0"	-	-	-	-	-	-	-	-	-
V-2	6	6	-	7'-0"	-	-	-	-	-	-	-	-	-
V-3	4	6	-	7'-0"	-	-	-	-	-	-	-	-	-
S-2	4	3	3	2'-0"	Ø 3/4"	1'-2 3/8"	Ø 3/8"	7 1/2"	7 1/2"	2'-0"	Ø 5/8"	45	-
S-3	4	3	3	2'-3 3/8"	-	-	-	-	-	-	-	-	SEE BENDING DTL.
TB-1	4	7	Ø	12'-7 1/2"	2'-2 1/4"	Ø 6 3/8"	-	-	-	-	-	-	90

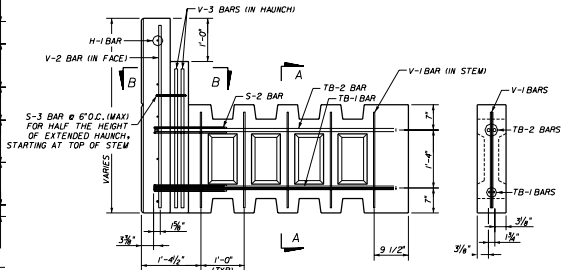
REBAR SCHEDULE - 9.5 x 5.0 x 0 TOP UNIT													
MARK	QTY	SIZE	TYPE	LGTH	B	C	D	E	H	K	D	ANGLE	REMARKS
H-1	8	4	-	4'-6"	-	-	-	-	-	-	-	-	-
V-1	8	3	-	2'-0"	-	-	-	-	-	-	-	-	-
V-2	6	6	-	7'-0"	-	-	-	-	-	-	-	-	-
V-3	4	6	-	7'-0"	-	-	-	-	-	-	-	-	-
S-2	4	3	3	2'-0"	Ø 3/4"	1'-2 3/8"	Ø 3/8"	7 1/2"	7 1/2"	2'-0"	Ø 5/8"	45	-
S-3	4	3	3	2'-3 3/8"	-	-	-	-	-	-	-	-	SEE BENDING DTL.
TB-1	4	7	Ø	12'-7 1/2"	2'-2 1/4"	Ø 6 3/8"	-	-	-	-	-	-	90

REBAR SCHEDULE - 10.0 x 5.0 x 0 TOP UNIT													
MARK	QTY	SIZE	TYPE	LGTH	B	C	D	E	H	K	D	ANGLE	REMARKS
H-1	8	4	-	4'-6"	-	-	-	-	-	-	-	-	-
V-1	8	3	-	2'-0"	-	-	-	-	-	-	-	-	-
V-2	6	6	-	7'-0"	-	-	-	-	-	-	-	-	-
V-3	4	6	-	7'-0"	-	-	-	-	-	-	-	-	-
S-2	4	3	3	2'-0"	Ø 3/4"	1'-2 3/8"	Ø 3/8"	7 1/2"	7 1/2"	2'-0"	Ø 5/8"	45	-
S-3	4	3	3	2'-3 3/8"	-	-	-	-	-	-	-	-	SEE BENDING DTL.
TB-1	4	7	Ø	12'-7 1/2"	2'-2 1/4"	Ø 6 3/8"	-	-	-	-	-	-	90

REBAR SCHEDULE - 10.5 x 5.0 x 0 TOP UNIT													
MARK	QTY	SIZE	TYPE	LGTH	B	C	D	E	H	K	D	ANGLE	REMARKS
H-1	8	4	-	4'-6"	-	-	-	-	-	-	-	-	-
V-1	8	3	-	2'-0"	-	-	-	-	-	-	-	-	-
V-2	6	6	-	7'-0"	-	-	-	-	-	-	-	-	-
V-3	4	6	-	7'-0"	-	-	-	-	-	-	-	-	-
S-2	4	3	3	2'-0"	Ø 3/4"	1'-2 3/8"	Ø 3/8"	7 1/2"	7 1/2"	2'-0"	Ø 5/8"	45	-
S-3	4	3	3	2'-3 3/8"	-	-	-	-	-	-	-	-	SEE BENDING DTL.
TB-1	4	7	Ø	12'-7 1/2"	2'-2 1/4"	Ø 6 3/8"	-	-	-	-	-	-	90

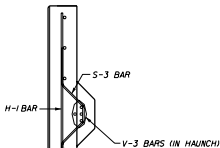


FRONT VIEW
(V-1-BARS IN STEM AND V-3 BARS IN HAUNCH OMITTED FOR CLARITY)

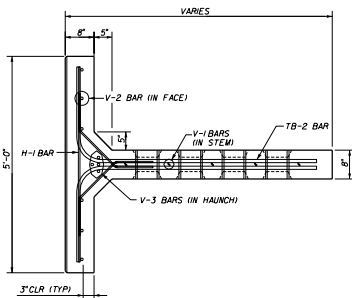


SIDE VIEW

SECTION A-A



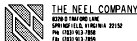
SECTION B-B



TOP VIEW
S-3 BARS IN EXTENDED HAUNCH OMITTED FOR CLARITY

1. ALL UNITS ON THIS SHEET WILL ONLY BE USED BY APPROVAL OF THE F.D.O.T. STRUCTURES DESIGN OFFICE ON A PROJECT BY PROJECT BASIS.

REINFORCING STEEL - TOP UNITS (III)



THE NEEL COMPANY
5210 S. 170th AVE.
MIDDLEBURY, FL 32150
Ph: (352) 853-7800
Fax: (352) 853-7800

OLDCASTLE PRECAST, INC.

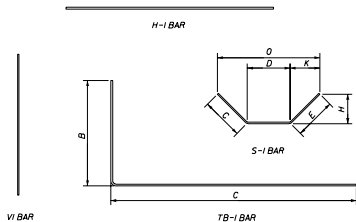
11643 SENECA STREET
MIDDLEBURY, FL 32150
Ph: (352) 750-2900
Fax: (352) 750-2900

NOTE: ALL STEEL REINFORCING BARS SHALL HAVE 3" MIN. CONCRETE COVER

STATE OF FLORIDA DEPARTMENT OF TRANSPORTATION
ROAD DESIGN

RETAINING WALL SYSTEM
THE NEEL COMPANY T-WALL
(3" COVER)

Revised	Date	Approved By
Designed By	JMC 01/20	<i>W. J. [Signature]</i>
Drawn by	CAW 01/20	
Checked by	JMC 01/20	
Scale	00	
Sheet No.	16 of 20	5010



REBAR SCHEDULE - 5.0 x 5.0 x 04 DBL UNIT

MARK	QNTY	SIZE	TYPE	LGTH	B	C	D	E	H	K	O	ANGLE	REMARKS
H-1	6	4	-	4'-6"	-	-	-	-	-	-	-	-	-
V-1	12	3	-	4'-6"	-	-	-	-	-	-	-	-	-
S-1	8	3	3	2'-9 1/2"	-	11 1/4"	11 1/4"	11 1/4"	8"	8"	2'-3 3/4"	45	-
TB-1	8	4	17	5'-8 1/2"	2'-3 1/2"	3'-6 1/2"	-	-	-	-	-	90	-

REBAR SCHEDULE - 5.0 x 5.0 x 06 DBL UNIT

MARK	QNTY	SIZE	TYPE	LGTH	B	C	D	E	H	K	O	ANGLE	REMARKS
H-1	6	4	-	4'-6"	-	-	-	-	-	-	-	-	-
V-1	16	3	-	4'-6"	-	-	-	-	-	-	-	-	-
S-1	8	3	3	2'-9 1/2"	-	11 1/4"	11 1/4"	11 1/4"	8"	8"	2'-3 3/4"	45	-
TB-1	8	4	17	7'-8 1/2"	2'-3 1/2"	5'-6 1/2"	-	-	-	-	-	90	-

REBAR SCHEDULE - 5.0 x 5.0 x 08 DBL UNIT

MARK	QNTY	SIZE	TYPE	LGTH	B	C	D	E	H	K	O	ANGLE	REMARKS
H-1	6	4	-	4'-6"	-	-	-	-	-	-	-	-	-
V-1	20	3	-	4'-6"	-	-	-	-	-	-	-	-	-
S-1	8	3	3	2'-9 1/2"	-	11 1/4"	11 1/4"	11 1/4"	8"	8"	2'-3 3/4"	45	-
TB-1	8	4	17	9'-8 1/2"	2'-3 1/2"	7'-6 1/2"	-	-	-	-	-	90	-

REBAR SCHEDULE - 5.0 x 5.0 x 10 DBL UNIT

MARK	QNTY	SIZE	TYPE	LGTH	B	C	D	E	H	K	O	ANGLE	REMARKS
H-1	6	4	-	4'-6"	-	-	-	-	-	-	-	-	-
V-1	24	3	-	4'-6"	-	-	-	-	-	-	-	-	-
S-1	8	3	3	2'-9 1/2"	-	11 1/4"	11 1/4"	11 1/4"	8"	8"	2'-3 3/4"	45	-
TB-1	8	4	17	11'-8 1/2"	2'-3 1/2"	9'-6 1/2"	-	-	-	-	-	90	-

REBAR SCHEDULE - 5.0 x 5.0 x 12 DBL UNIT

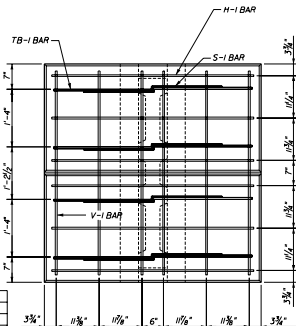
MARK	QNTY	SIZE	TYPE	LGTH	B	C	D	E	H	K	O	ANGLE	REMARKS
H-1	6	4	-	4'-6"	-	-	-	-	-	-	-	-	-
V-1	28	3	-	4'-6"	-	-	-	-	-	-	-	-	-
S-1	8	3	3	2'-9 1/2"	-	11 1/4"	11 1/4"	11 1/4"	8"	8"	2'-3 3/4"	45	-
TB-1	8	4	17	13'-8 1/2"	2'-3 1/2"	11'-6 1/2"	-	-	-	-	-	90	-

REBAR SCHEDULE - 5.0 x 5.0 x 14 DBL UNIT

MARK	QNTY	SIZE	TYPE	LGTH	B	C	D	E	H	K	O	ANGLE	REMARKS
H-1	6	4	-	4'-6"	-	-	-	-	-	-	-	-	-
V-1	32	3	-	4'-6"	-	-	-	-	-	-	-	-	-
S-1	8	3	3	2'-9 1/2"	-	11 1/4"	11 1/4"	11 1/4"	8"	8"	2'-3 3/4"	45	-
TB-1	8	4	17	15'-8 1/2"	2'-3 1/2"	15'-6 1/2"	-	-	-	-	-	90	-

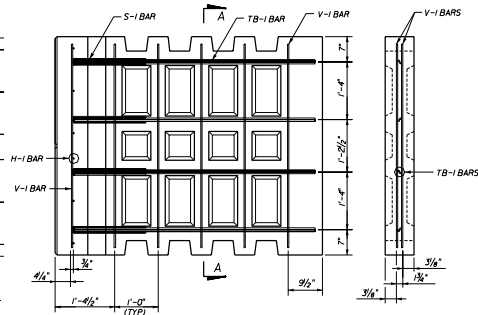
REBAR SCHEDULE - 5.0 x 5.0 x 16 DBL UNIT

MARK	QNTY	SIZE	TYPE	LGTH	B	C	D	E	H	K	O	ANGLE	REMARKS
H-1	6	4	-	4'-6"	-	-	-	-	-	-	-	-	-
V-1	36	3	-	4'-6"	-	-	-	-	-	-	-	-	-
S-1	8	3	3	2'-9 1/2"	-	11 1/4"	11 1/4"	11 1/4"	8"	8"	2'-3 3/4"	45	-
TB-1	8	4	17	17'-8 1/2"	2'-3 1/2"	15'-6 1/2"	-	-	-	-	-	90	-



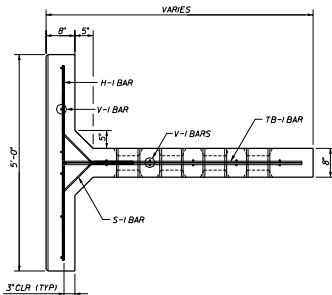
FRONT VIEW

(V-1 BARS IN STEM OMITTED FOR CLARITY)



SIDE VIEW

SECTION A-A



TOP VIEW

REINFORCING STEEL - DOUBLE WALLS

NOTE: ALL STEEL REINFORCING BARS SHALL HAVE 3" MIN. CONCRETE COVER



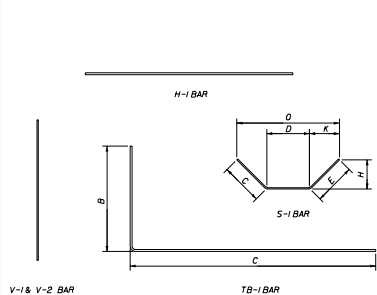
THE NEEL COMPANY
 8320 S. THOMPSON AVE.
 SPRING HILL, FLORIDA 32150
 PH. (352) 913-1200
 FAX (352) 913-1200

OLDCASTLE PRECAST, INC.
 11643 126th STREET
 JACKSONVILLE, FL 32218
 PH. (904) 778-2900
 FAX (904) 778-2900

STATE OF FLORIDA DEPARTMENT OF TRANSPORTATION
 ROAD DESIGN

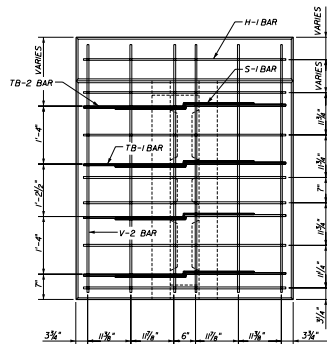
RETAINING WALL SYSTEM
 THE NEEL COMPANY T-WALL
 (3" COVER)

Drawn By	Checked By	Date	Revision	Approved By
JAC	JAC	08/09	00	[Signature]
CM	JAC	08/09	00	

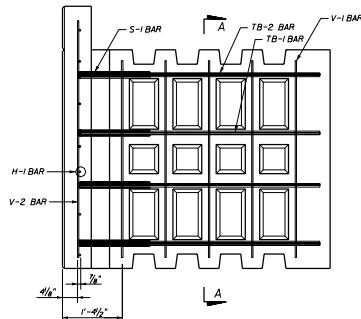


V-1 & V-2 BAR

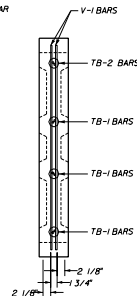
TB-1 BAR



FRONT VIEW
(V-1 BARS IN STEM OMITTED FOR CLARITY)



SIDE VIEW



SECTION A-A

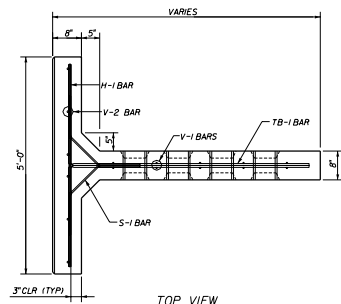
REBAR SCHEDULE - 5.5 x 5.0 x 06 DBL TOP UNIT													
MARK	QNTY	SIZE	TYPE	LGTH	B	C	D	E	H	K	O	ANGLE	REMARKS
H-1	6	4	-	4'-6"									-
V-1	10	3	-	4'-6"									-
V-2	6	5	-	5'-0"									-
S-1	8	3	3	2'-9 3/4"	1 1/4"	1 1/4"	1 1/4"	1 1/4"	8"	8"	2'-3 3/4"	45	
TB-1	8	5	17	7'-8 1/2"	2'-3 1/2"	5'-6 1/2"						90	

REBAR SCHEDULE - 6.0 x 5.0 x 06 DBL TOP UNIT													
MARK	QNTY	SIZE	TYPE	LGTH	B	C	D	E	H	K	O	ANGLE	REMARKS
H-1	7	4	-	4'-6"									-
V-1	10	3	-	4'-6"									-
V-2	6	5	-	5'-6"									-
S-1	8	3	3	2'-9 3/4"	1 1/4"	1 1/4"	1 1/4"	1 1/4"	8"	8"	2'-3 3/4"	45	
TB-1	8	5	17	7'-8 1/2"	2'-3 1/2"	5'-6 1/2"						90	

REBAR SCHEDULE - 6.5 x 5.0 x 06 DBL TOP UNIT													
MARK	QNTY	SIZE	TYPE	LGTH	B	C	D	E	H	K	O	ANGLE	REMARKS
H-1	7	4	-	4'-6"									-
V-1	10	3	-	4'-6"									-
V-2	6	5	-	6'-0"									-
S-1	8	3	3	2'-9 3/4"	1 1/4"	1 1/4"	1 1/4"	1 1/4"	8"	8"	2'-3 3/4"	45	
TB-1	8	5	17	7'-8 1/2"	2'-3 1/2"	5'-6 1/2"						90	

REBAR SCHEDULE - 7.0 x 5.0 x 06 DBL TOP UNIT													
MARK	QNTY	SIZE	TYPE	LGTH	B	C	D	E	H	K	O	ANGLE	REMARKS
H-1	8	4	-	4'-6"									-
V-1	10	3	-	4'-6"									-
V-2	6	5	-	6'-6"									-
S-1	8	3	3	2'-9 3/4"	1 1/4"	1 1/4"	1 1/4"	1 1/4"	8"	8"	2'-3 3/4"	45	
TB-1	8	5	17	7'-8 1/2"	2'-3 1/2"	5'-6 1/2"						90	

REBAR SCHEDULE - 7.5 x 5.0 x 06 DBL TOP UNIT													
MARK	QNTY	SIZE	TYPE	LGTH	B	C	D	E	H	K	O	ANGLE	REMARKS
H-1	8	4	-	4'-6"									-
V-1	10	3	-	4'-6"									-
V-2	6	5	-	7'-0"									-
S-1	8	3	3	2'-9 3/4"	1 1/4"	1 1/4"	1 1/4"	1 1/4"	8"	8"	2'-3 3/4"	45	
TB-1	8	5	17	7'-8 1/2"	2'-3 1/2"	5'-6 1/2"						90	



TOP VIEW
REINFORCING STEEL - DOUBLE TOP UNITS (1)

NOTE: ALL STEEL REINFORCING BARS SHALL HAVE 3" MIN. CONCRETE COVER



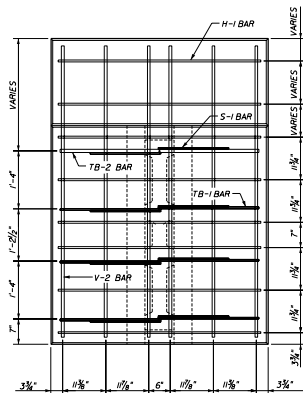
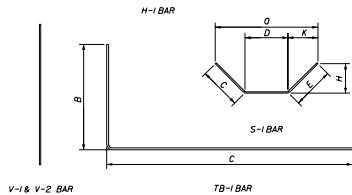
THE NEE COMPANY
8276 S. TRINITY LANE
SPRINGFIELD, VIRGINIA 22150
PH (540) 813 7100
FX (540) 813 7000

OLDCASTLE PRECAST, INC.
11443 WINDYBUSH LANE
JACKSONVILLE, FL 32216
PH (904) 778 7900
FX (904) 778 7900

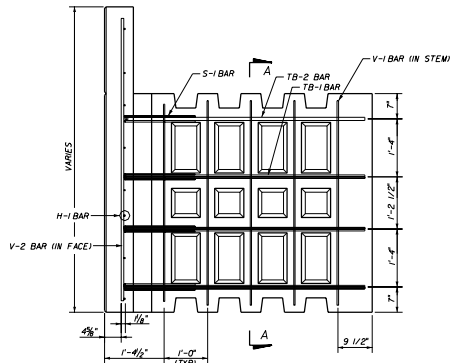
STATE OF FLORIDA DEPARTMENT OF TRANSPORTATION
ROAD DESIGN

RETAINING WALL SYSTEM
THE NEE COMPANY T-WALL
(3" COVER)

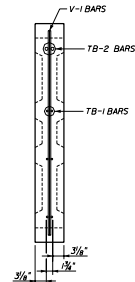
Designed By	JAC	00/0/00	Checked By	JAC	00/0/00
Drawn by	CM	00/0/00	Reviewed By		
Checked By	JAC	00/0/00	Date	00 18 of 20	5010



FRONT VIEW
(V-1 BARS OMITTED FOR CLARITY)



SIDE VIEW



SECTION A-A

REBAR SCHEDULE - 8.0 x 5.0 x 08 DBL TOP UNIT

MARK	QNTY	SIZE	TYPE	LGTH	B	C	D	E	H	K	O	ANGLE	REMARKS
H-1	9	4	-	4'-6"								-	
V-1	14	3	-	4'-6"								-	
V-2	6	6	-	7'-6"								-	
S-1	8	3	3	2'-9"		9"	1'-3"	9"	5 3/8"	5 3/8"	2'-1 3/4"	45	
TB-1	8	6	11	9'-8 1/2"	2'-3 1/2"	7'-6 1/2"						90	

REBAR SCHEDULE - 8.5 x 5.0 x 08 DBL TOP UNIT

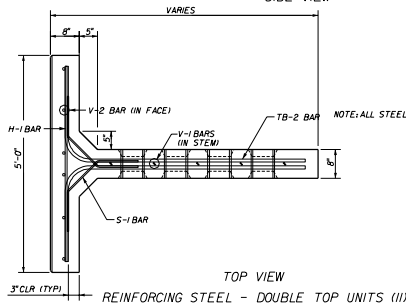
MARK	QNTY	SIZE	TYPE	LGTH	B	C	D	E	H	K	O	ANGLE	REMARKS
H-1	9	4	-	4'-6"								-	
V-1	14	3	-	4'-6"								-	
V-2	6	6	-	8'-0"								-	
S-1	8	3	3	2'-9"		9"	1'-3"	9"	5 3/8"	5 3/8"	2'-1 3/4"	45	
TB-1	8	6	11	9'-8 1/2"	2'-3 1/2"	7'-6 1/2"						90	

REBAR SCHEDULE - 9.0 x 5.0 x 08 DBL TOP UNIT

MARK	QNTY	SIZE	TYPE	LGTH	B	C	D	E	H	K	O	ANGLE	REMARKS
H-1	10	4	-	4'-6"								-	
V-1	14	3	-	4'-6"								-	
V-2	6	6	-	8'-6"								-	
S-1	8	3	3	2'-9"		9"	1'-3"	9"	5 3/8"	5 3/8"	2'-1 3/4"	45	
TB-1	8	6	11	9'-8 1/2"	2'-3 1/2"	7'-6 1/2"						90	

REBAR SCHEDULE - 9.5 x 5.0 x 08 DBL TOP UNIT

MARK	QNTY	SIZE	TYPE	LGTH	B	C	D	E	H	K	O	ANGLE	REMARKS
H-1	10	4	-	4'-6"								-	
V-1	14	3	-	4'-6"								-	
V-2	6	6	-	9'-0"								-	
S-1	8	3	3	2'-9"		9"	1'-3"	9"	5 3/8"	5 3/8"	2'-1 3/4"	45	
TB-1	8	6	11	9'-8 1/2"	2'-3 1/2"	7'-6 1/2"						90	



TOP VIEW
REINFORCING STEEL - DOUBLE TOP UNITS (III)

THESE TWO UNITS WILL ONLY BE USED BY APPROVAL OF THE F.D.O.T. STRUCTURES DESIGN OFFICE ON A PROJECT BY PROJECT BASIS.



THE NEEL COMPANY
2800 S. HUNTERS LANE
JACKSONVILLE, FL 32218
PH: (904) 770-2900
TEL: (904) 770-2900

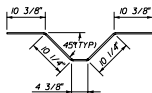
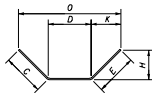
OLDCASTLE PRECAST, INC.
11840 154TH STREET
JACKSONVILLE, FL 32218
PH: (904) 770-2900
TEL: (904) 770-2900

STATE OF FLORIDA DEPARTMENT OF TRANSPORTATION
ROAD DESIGN

RETAINING WALL SYSTEM
THE NEEL COMPANY T-WALL
(3" COVER)

Drawn By	Checked By	Approved By	Date
CM	CM	[Signature]	08/09/20
CM	CM		00
CM	CM		19 of 20

5010



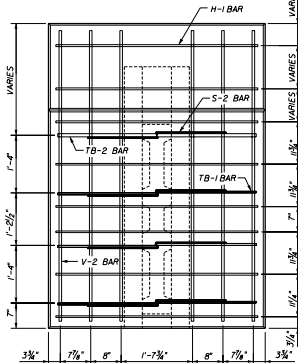
S-2 BAR

S-3 BAR

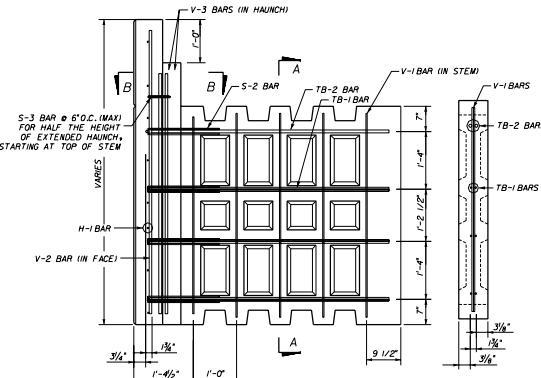
H-1 BAR

TB-1 BAR

V-1, V-2 & V-3 BAR



FRONT VIEW
(V-1 BARS IN STEM AND V-3 BARS
IN HAUNCH OMITTED FOR CLARITY)



SIDE VIEW

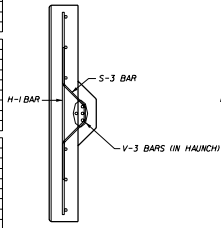
SECTION A-A

REBAR SCHEDULE - 10.0 x 5.0 x 10.0 OBL TOP UNIT													
MARK	QTY	SIZE	TYPE	LGTH	B	C	D	E	H	K	O	ANGLE	REMARKS
H-1	8	4	-	4'-6"	-	-	-	-	-	-	-	-	-
V-1	8	3	-	4'-6"	-	-	-	-	-	-	-	-	-
V-2	6	6	-	9'-0"	-	-	-	-	-	-	-	-	-
V-3	4	6	-	9'-6"	-	-	-	-	-	-	-	-	-
S-2	8	3	3	2'-0"	10 3/8"	1'-2 3/8"	10 3/8"	7 1/2"	7 1/2"	2'-5"	45	-	-
S-3	8	3	3	3'-3 3/8"	2'-2 1/4"	9'-6 1/2"	-	-	-	-	-	-	SEE BENDING DTL
TB-1	8	7	1/2	1'-7 1/2"	2'-2 1/4"	9'-6 1/2"	-	-	-	-	-	90	-

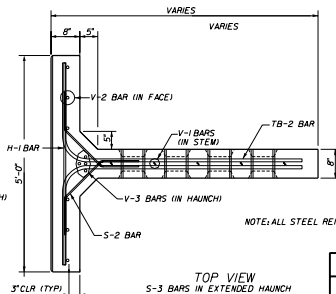
REBAR SCHEDULE - 10.5 x 5.0 x 10.0 OBL TOP UNIT													
MARK	QTY	SIZE	TYPE	LGTH	B	C	D	E	H	K	O	ANGLE	REMARKS
H-1	8	4	-	4'-6"	-	-	-	-	-	-	-	-	-
V-1	8	3	-	4'-6"	-	-	-	-	-	-	-	-	-
V-2	6	6	-	9'-0"	-	-	-	-	-	-	-	-	-
V-3	4	6	-	9'-6"	-	-	-	-	-	-	-	-	-
S-2	8	3	3	2'-0"	10 3/8"	1'-2 3/8"	10 3/8"	7 1/2"	7 1/2"	2'-5"	45	-	-
S-3	8	3	3	3'-3 3/8"	2'-2 1/4"	9'-6 1/2"	-	-	-	-	-	-	SEE BENDING DTL
TB-1	8	7	1/2	1'-7 1/2"	2'-2 1/4"	9'-6 1/2"	-	-	-	-	-	90	-

REBAR SCHEDULE - 11.0 x 5.0 x 10.0 OBL TOP UNIT													
MARK	QTY	SIZE	TYPE	LGTH	B	C	D	E	H	K	O	ANGLE	REMARKS
H-1	8	4	-	4'-6"	-	-	-	-	-	-	-	-	-
V-1	8	3	-	4'-6"	-	-	-	-	-	-	-	-	-
V-2	6	6	-	9'-0"	-	-	-	-	-	-	-	-	-
V-3	4	6	-	9'-6"	-	-	-	-	-	-	-	-	-
S-2	8	3	3	2'-0"	10 3/8"	1'-2 3/8"	10 3/8"	7 1/2"	7 1/2"	2'-5"	45	-	-
S-3	8	3	3	3'-3 3/8"	2'-2 1/4"	9'-6 1/2"	-	-	-	-	-	-	SEE BENDING DTL
TB-1	8	7	1/2	1'-7 1/2"	2'-2 1/4"	9'-6 1/2"	-	-	-	-	-	90	-

REBAR SCHEDULE - 11.5 x 5.0 x 10.0 OBL TOP UNIT													
MARK	QTY	SIZE	TYPE	LGTH	B	C	D	E	H	K	O	ANGLE	REMARKS
H-1	8	4	-	4'-6"	-	-	-	-	-	-	-	-	-
V-1	8	3	-	4'-6"	-	-	-	-	-	-	-	-	-
V-2	6	6	-	9'-0"	-	-	-	-	-	-	-	-	-
V-3	4	6	-	9'-6"	-	-	-	-	-	-	-	-	-
S-2	8	3	3	2'-0"	10 3/8"	1'-2 3/8"	10 3/8"	7 1/2"	7 1/2"	2'-5"	45	-	-
S-3	8	3	3	3'-3 3/8"	2'-2 1/4"	9'-6 1/2"	-	-	-	-	-	-	SEE BENDING DTL
TB-1	8	7	1/2	1'-7 1/2"	2'-2 1/4"	9'-6 1/2"	-	-	-	-	-	90	-



SECTION B-B



TOP VIEW
S-3 BARS IN EXTENDED HAUNCH
OMITTED FOR CLARITY

REINFORCING STEEL - DOUBLE TOP UNITS (III)

1. ALL UNITS ON THIS SHEET WILL ONLY BE USED BY APPROVAL OF THE P.E./D.T. STRUCTURES DESIGN OFFICE ON A PROJECT BY PROJECT BASIS.

NOTE: ALL STEEL REINFORCING BARS SHALL HAVE 3" MIN. CONCRETE COVER



THE NEEL COMPANY
6250 S. FM 900 S. LANE
DUNWOODY, GA 30118
PH: (770) 913 3000
FX: (770) 913 7000

OLDCASTLE PRECAST, INC.
11443 134th STREET
DUNWOODY, GA 30118
PH: (770) 750 2900
FX: (770) 750 2900

STATE OF FLORIDA DEPARTMENT OF TRANSPORTATION
ROAD DESIGN

RETAINING WALL SYSTEM
THE NEEL COMPANY T-WALL
(3" COVER)

Designed By	Checked By	Approved By	Date
JAC	GCN	[Signature]	00
Drawn By	Checked By		20 of 20
GCN	JAC		5010