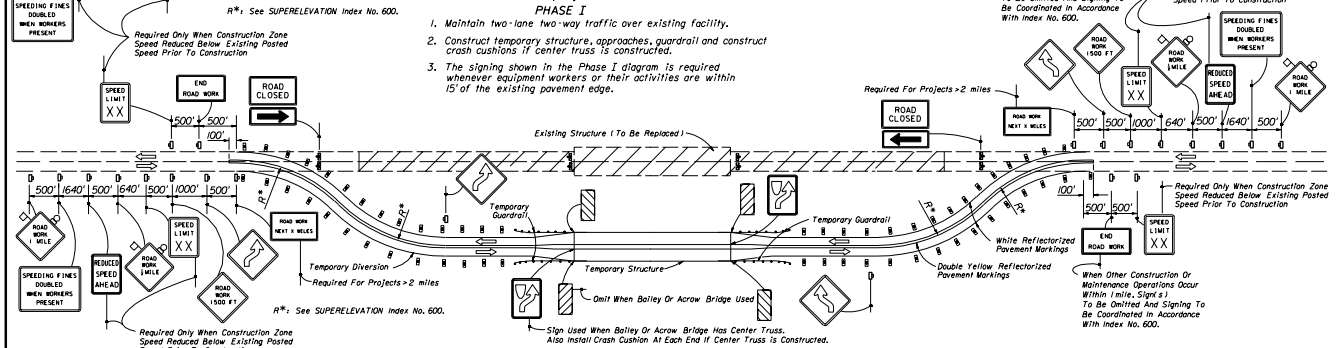
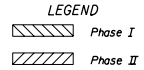


- PHASE I**
1. Maintain two-lane two-way traffic over existing facility.
 2. Construct temporary structure, approaches, guardrail and construct crash cushions if center truss is constructed.
 3. The signing shown in the Phase I diagram is required whenever equipment workers or their activities are within 15' of the existing pavement edge.



- PHASE II**
1. Re-sign and mark as shown in Phase II plan.
 2. Reroute traffic to diversion and maintain two-way traffic on diversion. Install Type III barricades.
 3. Construct proposed structure and reconstruct or resurface existing approaches.

PHASE III (See Sheet 2 of 2)
GENERAL NOTES (See Sheet 2 of 2)



Required Only When Construction Zone Speed Reduced Below Existing Posted Speed Prior To Construction

Required For Projects > 2 miles

Required Only When Construction Zone Speed Reduced Below Existing Posted Speed Prior To Construction

R*: See SUPERELEVATION Index No. 600.

R*: See SUPERELEVATION Index No. 600.

When Other Construction Or Maintenance Operations Occur Within 1 mile, Signs 1 To Be Omitted And Signing To Be Coordinated In Accordance With Index No. 600.

When Other Construction Or Maintenance Operations Occur Within 1 mile, Signs 1 To Be Omitted And Signing To Be Coordinated In Accordance With Index No. 600.

Sign Used When Bailey Or Arcow Bridge Has Center Truss. Also Install Crash Cushion At Each End If Center Truss is Constructed.

- SYMBOLS**
- Sign With 18" x 18" (Min.) Orange Flag And Type B Light
 - Type I Or Type II Barricade Or Vertical Panel Or Drum (With Steady Burning Light At Night Only).
 - Type III Barricade (With Flashing Light)
 - Work Zone Sign

STATE OF FLORIDA DEPARTMENT OF TRANSPORTATION
ROAD DESIGN

TRAFFIC CONTROL THROUGH WORK ZONES
TWO-LANE, TWO-WAY • RURAL STRUCTURE REPLACEMENT


Designed By	06/79	Checked By	06/79
Drawn By	06/79	Approved By	06/79
Checked By	06/79	Scale	1 of 2

PHASE III

1. Reroute traffic to final alignment and maintain two-way traffic.
2. Remove all temporary construction items.

GENERAL NOTES

1. All signing, pavement marking, barricades and warning lights necessary for maintenance of traffic shall conform to Index No. 600.
2. The first two warning signs shall have an 18" x 18" (min.) orange flag and a Type B light attached and operating at all times.
3. For speed sign applications see Index No. 600.
4. For lane width requirements see Index No. 600. When one-way one-lane operations are necessary, a minimum width of 12' shall be maintained and traffic controlled in accordance with Indexes Nos. 603, 604, 606, 607 or 608. Minimum width for the detour shoulders is 6'.
5. Method of attaching temporary guardrail to the diversion structure to be approved by the Engineer. Cost of temporary guardrail systems, including end anchorage assemblies, transitions and attachment to temporary structures, are to be included in the contract unit price for guardrail (temporary) LF.
6. Provisions approved by the Engineer shall be made for the removal of storm water from the roadway(s) during construction.
7. Temporary crash cushions shall be in accordance with Index No. 435 unless other device called for in the plans.
8. Arrows denote direction of traffic only and do not reflect pavement markings.
9. Longitudinal dimensions are to be adjusted to fit field conditions. See Index No. 600.
10. Where the temporary structure is not required the diversion may be constructed in accordance with Index No. 609, unless otherwise stipulated in the plans.
11. For reflective raised pavement marker application see Index No. 600 and Index No. 17352.
12. For general TCZ requirements and additional information refer to Index No. 600.

STATE OF FLORIDA DEPARTMENT OF TRANSPORTATION ROAD DESIGN			
TRAFFIC CONTROL THROUGH WORK ZONES			
TWO-LANE, TWO-WAY • RURAL			
STRUCTURE REPLACEMENT			
Design No.	06/79	Approved By	
Drawn By	06/79	Checked By	06/79
Scale	00	Sheet No.	2 of 2
Index No.		Project No.	650