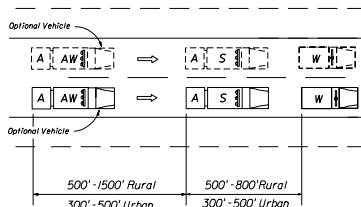
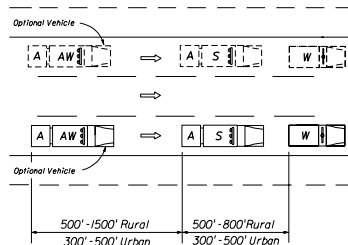


MODE • WARNING



MODE • PASS LEFT [RIGHT]



MODE • PASS LEFT [RIGHT]

## MOVING OPERATIONS

### GENERAL NOTES

1. These illustrations are representative of general conditions.
2. The intensity of light and the position of panels shall be as specified in Index No. 600.
3. The Advance Warning Vehicle (Optional) may be used at the direction of the Engineer. If an Advance Warning Vehicle is operated within the travel way, an approved Truck Mounted Attenuator will be required on the Advance Warning Vehicle but not required on the Shadow Vehicle. The Advance Warning Arrow Panel and Warning Sign are required on both the Advance Warning and Shadow Vehicles.
4. For general TCZ requirements and additional information refer to Index No. 600.
5. If the work vehicle speed exceeds the minimum legal speed limit on limited access facilities and one-half the posted speed limit on other facilities the engineer in charge may delete requirements for shadow vehicle and attenuators. The work vehicle will be required to have an advance warning arrow panel and sign message.

### SYMBOLS

- Work Vehicle With Flashing Beacon
- Shadow (S) Or Advance Warning (AW) Vehicle With Advance Warning Arrow Panel And Sign Message
- Truck Mounted Attenuator (TMA)
- Lane Identification And Direction Of Traffic

### TYPICAL APPLICATIONS

Striping  
RPM Placement  
Vegetation Control

### CONDITIONS MOVING OPERATION

STATE OF FLORIDA DEPARTMENT OF TRANSPORTATION ROAD DESIGN			
TRAFFIC CONTROL THROUGH WORK ZONES			
<b>MOVING OPERATIONS</b>			
Designed By	DATE	Approved By	
Drawn By	DATE	Checked By	00
Checked By	DATE	1 of 1	627