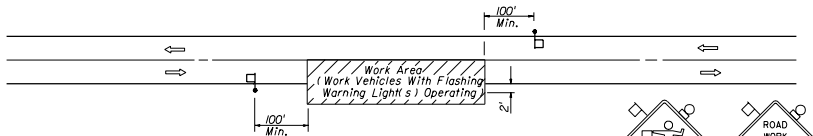


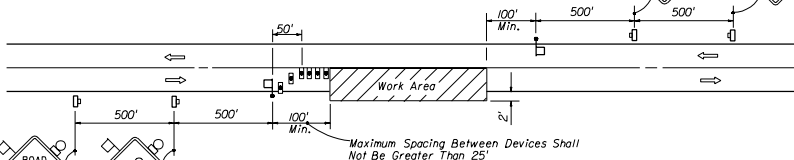
CONDITIONS

FOR ANY OPERATION THAT IS 2' OR MORE OUTSIDE THE EDGE OF THE PAVEMENT FOR A PERIOD OF LESS THAN 60 MINUTES.



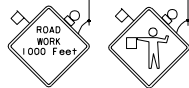
CONDITIONS

FOR ANY OPERATION THAT ENEROACHES IN THE AREA BETWEEN THE CENTERLINE AND A LINE 2' OUTSIDE THE EDGE OF THE PAVEMENT FOR A PERIOD OF 15 MINUTES OR LESS



CONDITIONS

FOR ANY OPERATION THAT ENEROACHES IN THE AREA BETWEEN THE CENTERLINE AND A LINE 2' OUTSIDE THE EDGE OF THE PAVEMENT FOR A PERIOD IN EXCESS OF 15 MINUTES BUT LESS THAN 60 MINUTES.



Maximum Spacing Between Devices Shall Not Be Greater Than 25'

GENERAL NOTES

- The maximum length of work area to be determined by the Engineer, but in no case to exceed the length of one-half (1/2) days operation or 2 miles whichever is less.
- All vehicles, equipment, workers (except flaggers) and their activities are restricted at all times to one side of the roadway.
- Additional one-way control may be effected by the following means:
 - Flag-carrying vehicle;
 - Official vehicle;
 - Pilot vehicles;
 - Traffic signals.
- The first two warning signs shall have an 18" x 18" (min.) orange flag and a Type B light attached and operating at all times. Mesh signs may be used for (Daylight Only) operations. Type B Lights and Orange Flags are not required.
- The FLAGGER legend sign may be substituted for the symbol sign.
- Arrows denote direction of traffic only and do not reflect pavement markings.
- Longitudinal dimensions are to be adjusted to fit field conditions. See Index No. 600.
- When a side road intersects the highway on which work is being performed additional traffic control devices shall be erected in accordance with other applicable TCZ indexes.
- For general TCZ requirements and additional information refer to Index No. 600.

TYPICAL APPLICATIONS

Marking Patches
 Field Patches
 String Line
 Utility Work
 Cleaning Up Debris On Pavement
 Pavement Coring And Straight Edging

SYMBOLS

- Work Area
- Sign With 18" x 18" (Min.) Orange Flag And Type B Light
- Type I Or Type II Barricade Or Vertical Panel Or Drum (With Steady Burning Light At Night Only). (Tubular Markers May Be Used During Daylight Only. Cones May Be Used -See Index 600).
- Work Zone Sign
- Flagger

STATE OF FLORIDA DEPARTMENT OF TRANSPORTATION			
ROAD DESIGN			
TRAFFIC CONTROL THROUGH WORK ZONES			
TWO-LANE TWO-WAY RURAL			
SHORTTIME			
DAY OR NIGHT OPERATIONS			
DESIGNED BY	DATE	APPROVED BY	
DRAWN BY	DATE	CHECKED BY	00
CHECKED BY	DATE	NO. OF SHEETS	1 of 1
			607