

GENERAL NOTES

- Work operations shall be confined to one traffic lane, leaving the opposite lane open to traffic.
- All vehicles, equipment, workers (except flaggers), and their activities are restricted at all times to one side of the roadway.
- If the work operation does not exceed 60 minutes, traffic control will be in conformance with Index No. 607.
- Additional one-way control may be effected by the following means:
(1) Flag-carrying vehicles; (2) Official vehicles; (3) Pilot vehicles; (4) Traffic signals.

When flaggers are the sole means of one-way control the flaggers shall be in sight of each other or in direct communication at all times.
- The first two warning signs shall have an 18" x 18" (min.) orange flag and a Type B light attached and operating at all times.

Mesh signs may be used for (Daylight Only) operations. Type B Lights and Orange Flags are not required.
- The FLAGGER legend sign may be substituted for the symbol sign.
- $L (min) = \frac{WS}{2}$ for speeds ≥ 45 mph
 $\frac{WS^2}{120}$ for speeds ≤ 40 mph

Where:
W = Width of lateral transition in feet
S = Posted speed limit (mph)
- The ONE-LANE ROAD signs are to be fully covered and the FLAGGER signs either removed or fully covered when no work is being performed and the highway is open to two-way traffic.
- Arrows denote direction of traffic only and do not reflect pavement markings.
- Longitudinal dimensions are to be adjusted to fit field conditions. See Index No. 600.
- When a side road intersects the highway on which work is being performed additional traffic control devices shall be erected in accordance with other applicable TCZ indexes.
- For general TCZ requirements and additional information, refer to Index No. 600.

TYPICAL APPLICATIONS

Pavement Resurfacing
Pavement Repair
Utility Work
Bridge Repair
Guardrail Work

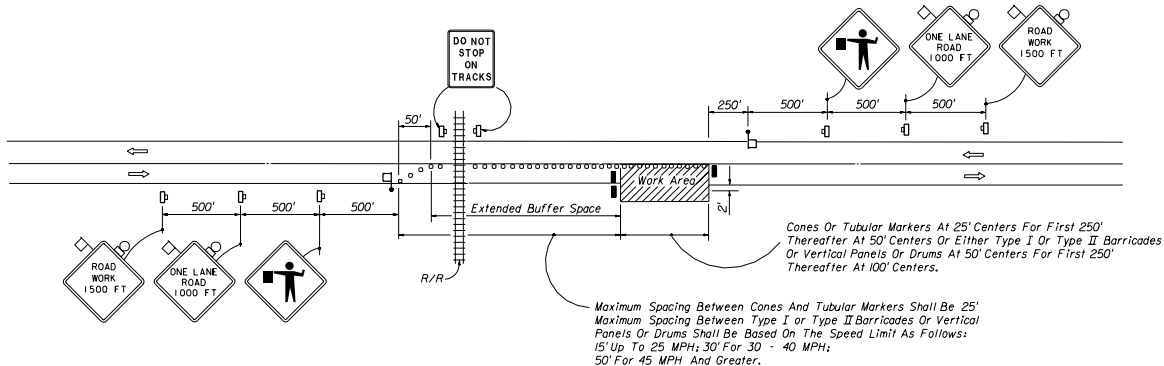
CONDITIONS

WHERE ANY VEHICLE, EQUIPMENT, WORKERS OR THEIR ACTIVITIES ENCRANCH THE AREA BETWEEN THE CENTERLINE AND A LINE 2' OUTSIDE THE EDGE OF PAVEMENT

SYMBOLS

- Work Area
- Sign With 18" x 18" (Min.) Orange Flag And Type B Light
- Type I, Type II Or Type III Barricade Or Vertical Panel Or Drum
- Type I Or Type II Barricade Or Vertical Panel Or Cone Or Tubular Marker Or Drum
- Work Zone Sign
- Flagger

STATE OF FLORIDA DEPARTMENT OF TRANSPORTATION ROAD DESIGN			
TRAFFIC CONTROL THROUGH WORK ZONES TWO-LANE, TWO-WAY * RURAL OPERATIONS ONE DAYLIGHT PERIOD OR LESS			
Designed By	Checked By	Drawn By	Approved By
Drawn By	00	00	00
Checked By	00	00	00
			1 of 2
			603



GENERAL NOTES

- Work operations shall be confined to one traffic lane, leaving the opposite lane open to traffic.
- All vehicles, equipment, workers (except flaggers), and their activities are restricted at all times to one side of the roadway.
- When flaggers are the sole means of one-way control the flaggers shall be in sight of each other or in direct communication at all times.
- The first two warning signs shall have an 18" x 18" (min.) orange flag and a Type B light attached and operating at all times.
Mesh signs may be used for (Daylight Only) operations. Type B Lights and Orange Flags are not required.
- The FLAGGER legend sign may be substituted for the symbol sign.
- The ONE-LANE ROAD signs are to be fully covered and the FLAGGER signs either removed or fully covered when no work is being performed and the highway is open to two-way traffic.
- Arrows denote direction of traffic only and do not reflect pavement markings.
- Longitudinal dimensions are to be adjusted to fit field conditions. See Index No. 600.
- When a side road intersects the highway on which work is being performed additional traffic control devices shall be erected in accordance with other applicable TCZ indexes.
- For general TCZ requirements and additional information, refer to Index No. 600.
ii. Discontinuing of extended buffer space will not occur until the queue length plus 300' is reached.

TYPICAL APPLICATIONS

Pavement Resurfacing
Pavement Repair
Utility Work
Bridge Repair
Guardrail Work

CONDITIONS

WHERE ANY VEHICLE, EQUIPMENT, WORKERS OR THEIR ACTIVITIES ENCROACH THE AREA BETWEEN THE CENTERLINE AND A LINE 2' OUTSIDE THE EDGE OF PAVEMENT THAT REQUIRES A LANE CLOSURE IN THE VICINITY OF A RAILROAD CROSSING.

SYMBOLS

- Work Area
- Sign With 18" x 18" (Min.) Orange Flag And Type B Light
- Type I, Type II Or Type III Barricade Or Vertical Panel Or Drum
- Type I Or Type II Barricade Or Vertical Panel Or Cone Or Tubular Marker Or Drum
- Work Zone Sign
- Flagger

STATE OF FLORIDA DEPARTMENT OF TRANSPORTATION ROAD DESIGN			
TRAFFIC CONTROL THROUGH WORK ZONES TWO-LANE, TWO-WAY • RURAL OPERATIONS ONE DAYLIGHT PERIOD OR LESS			
Designed By	Checked By	Date	Approved By
AWP	AWP	00	
Drawn By	Checked By	Date	Scale
AWP	AWP	00	2 of 2
Checked By	AWP	00	603