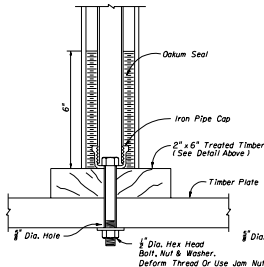
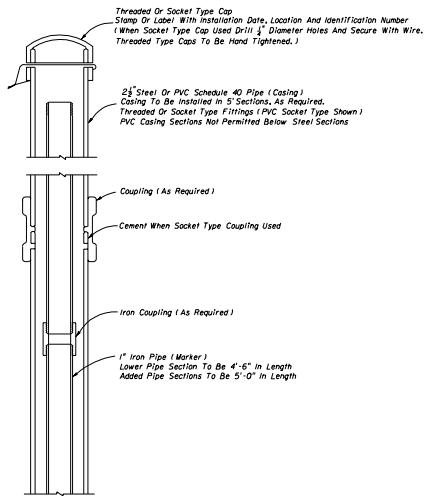


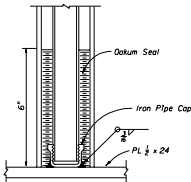
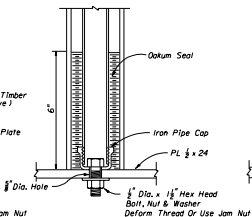
PLAN  
TIMBER PLATE



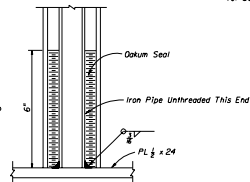
TIMBER PLATE



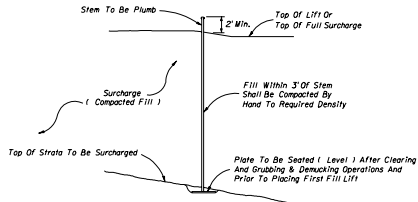
STEEL PLATE  
STEM AND PLATE OPTIONS



STEEL PLATE



STEEL PLATE



INSTALLATION

NOTES

- Elevation of the top of each length of marker pipe shall be determined as soon as it is installed and also immediately before the next length of marker pipe is added.
- Settlement plate locations shall be flagged and protected from construction vehicles and equipment. If settlement plates are disturbed, they shall be replaced in kind.
- Oakum used to construct seal should not have a mesh covering (plastic or other synthetic material).
- The settlement plates shall be paid for under the contract unit price for Settlement Plate Assembly, AS.

STATE OF FLORIDA DEPARTMENT OF TRANSPORTATION  
ROAD DESIGN

SETTLEMENT PLATE

Revised No.	Date	Approved By
001	10-78	<i>[Signature]</i>
Drawn By	10-77	STATE HIGHWAY DESIGN CENTER
Checked By	10-77	00
1 of 1		540