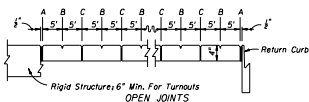


\*"E" Joints Required When Length Exceeds 30'  
SAWED JOINTS



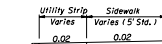
EXAGGERATED SCALE  
LONGITUDINAL SECTION  
SIDEWALK JOINTS

JOINT LEGEND

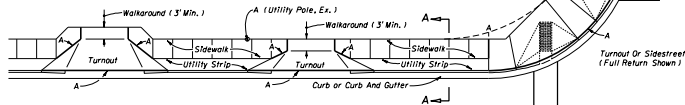
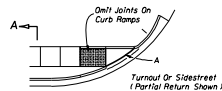
- A -  $\frac{1}{2}$ " Expansion Joints (Preformed Joint Filler)
- B -  $\frac{1}{2}$ " Dummy Joints, Tooled
- C -  $\frac{1}{2}$ " Formed Open Joints
- D -  $\frac{1}{2}$ " Saw Cut Joints,  $\frac{1}{2}$ " Deep (96 Hour) Max. 5' Centers
- E -  $\frac{1}{2}$ " Saw Cut Joints,  $\frac{1}{2}$ " Deep (12 Hour) Max. 30' Centers
- F -  $\frac{1}{2}$ " Expansion Joint When Run Of Sidewalk Exceeds 120'
- G - Cold Joint With Bond Breaker, Tooled

NOTES FOR CONCRETE SIDEWALK ON CURBED ROADWAYS

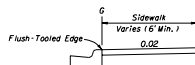
1. Sidewalks shall be constructed in accordance with Section 522 of the FDOT Standard Specifications except for public sidewalk curb ramp runs which shall be finished in accordance with Index No. 304.
2. Bond breaker material can be any impermeable coated or sheet membrane or preformed material having a thickness of not less than 6 mils nor more than  $\frac{1}{4}$ ".
3. For public sidewalk curb ramps see Index No. 304.
4. For turnouts see Index No. 515.
5. Sidewalk shall be paid for under the contract unit price for Sidewalk Concrete (..... Thick), S.Y.



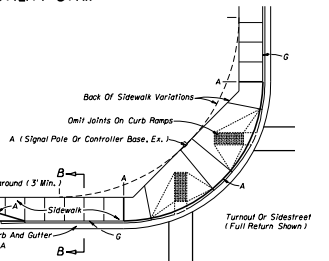
SECTION AA



SIDEWALK WITH UTILITY STRIP



SECTION BB



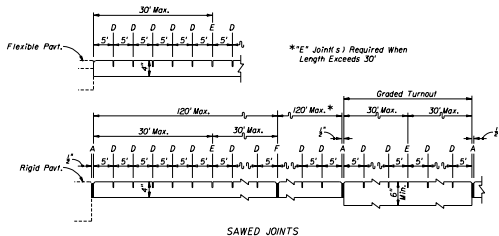
SIDEWALK WITHOUT UTILITY STRIP

STATE OF FLORIDA DEPARTMENT OF TRANSPORTATION  
ROAD DESIGN

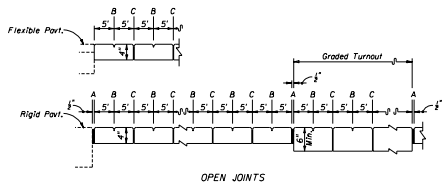
CONCRETE SIDEWALK

Drawn By	DATE	APPROVED BY
Checked By	DATE	DATE
1 of 2	3/0	

CONCRETE SIDEWALK FOR CURBED ROADWAYS



SAWED JOINTS



OPEN JOINTS

EXAGGERATED SCALE  
LONGITUDINAL SECTIONS  
SIDEWALK JOINTS

**JOINT LEGEND**

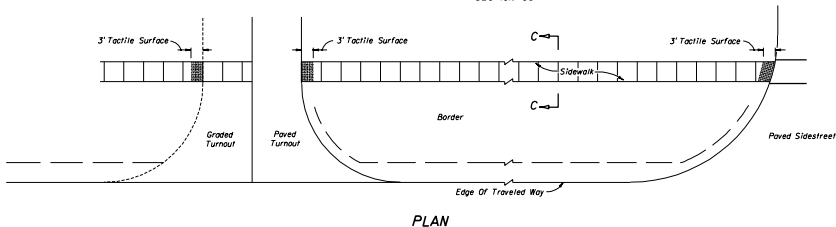
- A -  $\frac{1}{2}$ " Expansion Joints (Preformed Joint Filler)
- B -  $\frac{1}{2}$ " Dummy Joints, Tooled
- C -  $\frac{1}{2}$ " Formed Open Joints
- D -  $\frac{1}{2}$ " Saw Cut Joints,  $1\frac{1}{2}$ " Deep (96 Hour) Max. 5' Centers
- E -  $\frac{1}{2}$ " Saw Cut Joints,  $1\frac{1}{2}$ " Deep (12 Hour) Max. 30' Centers
- F -  $\frac{1}{2}$ " Expansion Joint When Run Of Sidewalk Exceeds 120'

**NOTES FOR CONCRETE SIDEWALKS ON UNCURBED ROADWAYS**

1. Sidewalks shall be constructed in accordance with Section 522 of the FDOT Standard Specifications.
2. Sidewalks crossing streets and driveways shall have a tactile surface for a minimum of 3' adjacent to each crossing. Tactile surfaces shall conform to the requirements described in the General Notes on Index No. 304.
3. For turnouts see Index No. 515.
4. Sidewalk shall be paid for under the contract unit price for Sidewalk Concrete (..... Thick), SY.

Sidewalk Varies (5' Std.) 0.02
--------------------------------------

SECTION CC



PLAN

**CONCRETE SIDEWALKS FOR UNCURBED ROADWAYS**

STATE OF FLORIDA DEPARTMENT OF TRANSPORTATION  
ROAD DESIGN

**CONCRETE SIDEWALK**

Designed By	DATE	APPROVED BY	
Drawn By	1/13	STATE OF FLORIDA DEPARTMENT OF TRANSPORTATION	
Checked By	1/13	00	2 of 2
			3/10