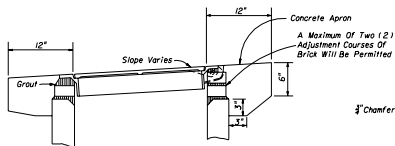
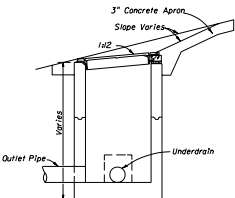


TYPICAL URBAN INSTALLATION

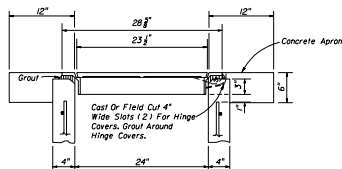


PERMISSIBLE TOP ADJUSTMENT

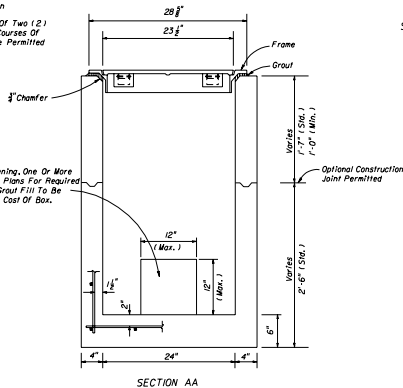


SECTION

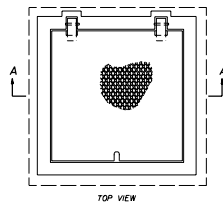
TYPICAL INSTALLATION ON SLOPES



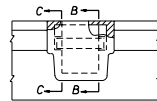
TYPICAL TOP AND APRON



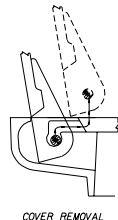
BOX AND TOP



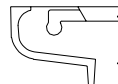
TOP VIEW



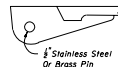
BACK VIEW



COVER REMOVAL



SECTION CC



SECTION BB

HINGE DETAIL

GENERAL NOTES

1. Cast Iron cover and frame to be Neenah Foundry Company R-6660-JH, U.S. Foundry Manufacturing Corporation No. A-632 or equal. Neenah R-6660-JH detailed this index.
2. Box to be Class I Concrete, reinforced with No. 3 bars on 8" centers both ways, sides and bottom.
3. Concrete apron to be included in the contract unit price for Underdrain Inspection Box.
4. All covers shall be furnished with pick holes. Fitted lifts or handles are not permitted.
5. Monhole Type P Alternate A, Index 200, with Type I Frame and Cover, Index 200, may be used in lieu of the box detailed on this sheet, and is recommended when high ADT increases chance of the repeated vehicle loadings.

STATE OF FLORIDA DEPARTMENT OF TRANSPORTATION  
ROAD DESIGN

UNDERDRAIN  
INSPECTION BOX

DESIGNED BY	DATE	APPROVED BY	DATE
JW	05/08	J. A. McNamee	05/08
DRAWN BY	DATE	CHECKED BY	DATE
JW	05/08	JW	05/08
CHECKED BY	DATE	NO. OF SHEETS	TOTAL SHEETS
JW	05/08	00	1 OF 1