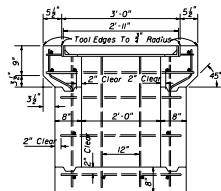
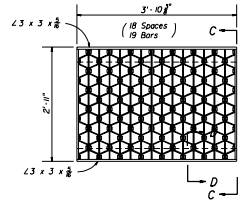


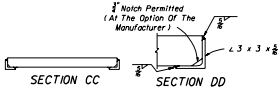
SECTION AA #4 Bars @ 12" Ctrs.



SECTION BB

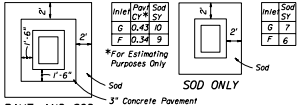


STEEL GRATE
Steel Grating, Straight Bars 3" x 4"
Reinforcing Bars 2" x 3"



SECTION CC

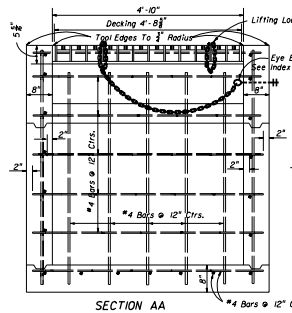
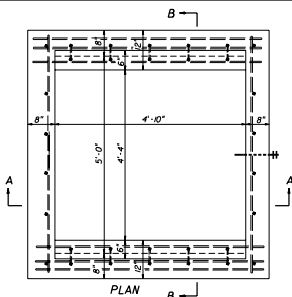
SECTION DD



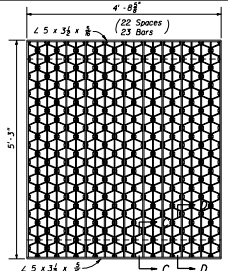
PAVT. AND SOD
SOD ONLY
3" Concrete Pavement

Notes: 1. Pavement and/or sod to be used only where called for in the plans.
2. Cost of paving to be included in cost of inlet.

PAVEMENT AND SODDING

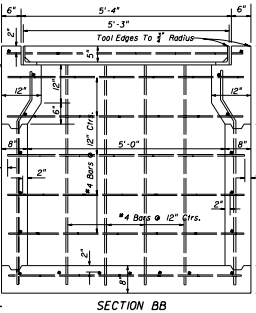


SECTION AA #4 Bars @ 12" Ctrs.



STEEL GRATE

5" Steel Decking, Weight 630 Lbs. Main Bars 5" x 1/2"
Intermediate Bars 1 1/2" x 3/4". Reinforcing Bars 1 1/2" x 3/8"



SECTION BB

TYPE G

GENERAL NOTES

- These Inlets are designed for use in ditches, medians, pavement areas, or other areas subject to heavy wheel loads where debris is minimal and is subject to pedestrian and/or bicycle traffic.
- When alternate G grate is specified in plans, the grate is to be not dipped galvanized after fabrication.
- These inlets may be used with All, B structure bottoms, Index 200. The inlet and bottom combinations are to be paid for under the contract unit price for Inlets (DT Bot) (Type F (or G)) (J Bot, Depth), Etc.
- For supplemental details (Type F only), see index 200.

STATE OF FLORIDA DEPARTMENT OF TRANSPORTATION
ROAD DESIGN

DITCH BOTTOM INLETS
TYPES F & G

Designed By	REV	DATE	Checked By	DATE	Drawn By	DATE	Scale	Sheet No.	Project No.	Approved By	DATE
MM		01/90	MM	01/90	MM	01/90		1 of 1		<i>J. A. McNamee</i>	01/90