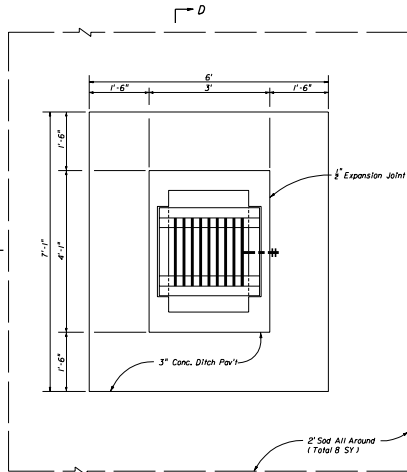
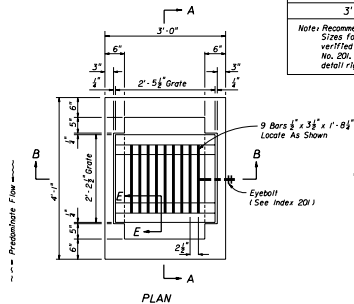
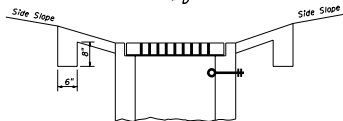


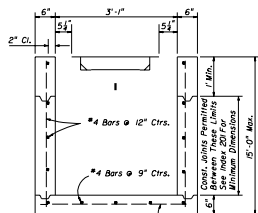
SECTION DD



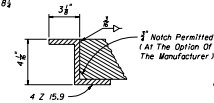
SECTION CC



PLAN



SECTION AA

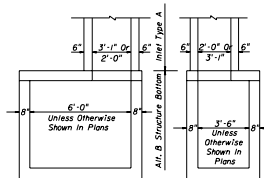


SECTION EE

RECOMMENDED MAXIMUM PIPE SIZES

INLET INSIDE WIDTH	PIPE SIZE
2'-0"	18"
3'-1"	24"

Note: Recommended sizes are for concrete pipe. Sizes for other types of pipe must be verified for fit in accordance with Index No. 201. For larger pipe see bottom detail right and Index No. 200.



NOTE: Ailt. B Structure Bottom Only. See Index No. 200 for Structure Bottom Details And Hole Reinforcement.

INLET WITH STRUCTURE BOTTOM

GENERAL NOTES

1. This Inlet is designed for ditches, medians, or other areas subject to heavy wheel loads on limited access facilities where debris may be a problem. NOTICE: This Inlet is not for use in areas subject to pedestrian and/or bicycle traffic.
2. Reinforcing-2" clearance to inside face. Cut or bend bars out of way of pipe to clear pipe by 1/2".
3. Chamfer exposed edges (1/4" Chamfer).
4. When alternate "G" grate is specified in plans, the grate is to be hot dipped galvanized after fabrication.
5. Cost of ditch paving to be included in the cost of Inlet. Sealing to be paid for under contract unit price for Sealing, S/C.
6. For supplemental details see Index No. 201.

STATE OF FLORIDA DEPARTMENT OF TRANSPORTATION
ROAD DESIGNDITCH BOTTOM INLET
TYPE A

Drawn By:	Checked By:	Approved By:	DATE OF ISSUE:
		A. A. Robinson	
			PROJECT NO.
			230