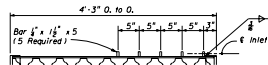


NOTE: A11. B Structure Bottom Only. See Index No. 200 for structure bottom details and hole reinforcement. (For Pipes 30" Dia. And Larger)

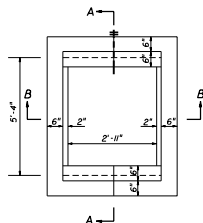
INLET WITH STRUCTURE BOTTOM

GENERAL NOTES

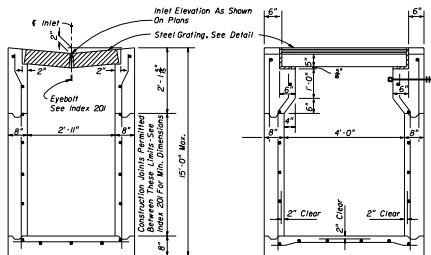
1. This inlet is designed for village swales, ditches, or other areas subject to heavy wheel loads, minimum debris and subject to pedestrian and/or bicycle traffic.
2. When alternate "C" grate is specified in plans, the grate is to be hot dipped galvanized after fabrication.
3. Reinforcing - #4 bars at 12" ctrs. both ways. Cut or bend bars out of way of pipe to clear pipe 1 1/2".
4. All exposed edges and corners shall be tooled to 1/4" radius.
5. Recommended maximum pipe sizes shown are for concrete pipe.
6. For supplementary details see index No. 201.



OPTIONAL BAR SPACING



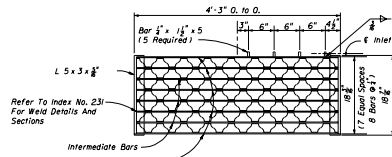
PLAN



SECTION BB

Recommended Maximum Pipe Size:
2'-11" Wall - 24" Size
4'-0" Wall - 36" Size

SECTION AA



STEEL GRATE

TWO REQUIRED PER INLET

5" Steel Grate Main Bars 5" x 1/4"
Intermediate Bars 1 1/2" x 1/4" Reticuline Bars 1 1/2" x 1/4"
Steel Grate : Manufactured By Borden, Florida Steel, U.S. Foundry
Irving, Reliance, Greulich (Or Equal).

STATE OF FLORIDA DEPARTMENT OF TRANSPORTATION
ROAD DESIGN

GUTTER INLET TYPE V

DESIGNED BY	DATE	APPROVED BY
DMW	4/87	DD
DRAWN BY	DMW	SCALE
CHECKED BY	DMW	1 OF 1

221