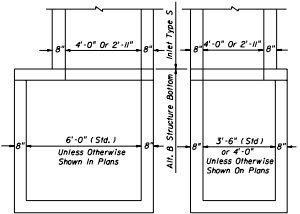
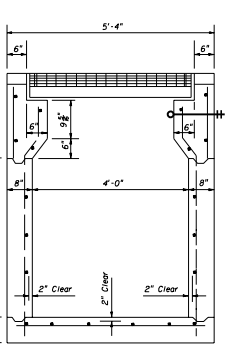
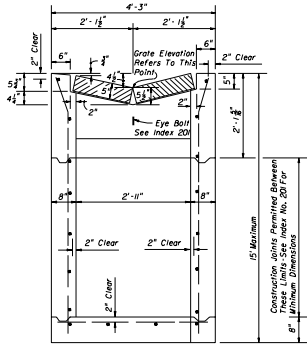
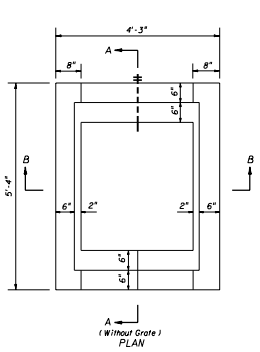


RECOMMENDED MAXIMUM PIPE SIZES

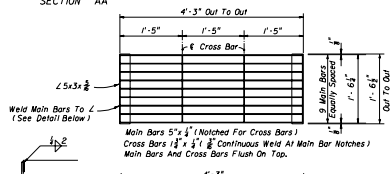
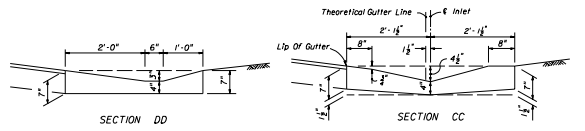
INLET INSIDE WIDTH	PIPE SIZE
2'-11"	24"
4'-0"	36"

Note: Recommended sizes are for concrete pipe. Sizes for other types of pipe must be verified for fit in accordance with Index No. 201. For larger pipe see bottom detail right and Index No. 200.



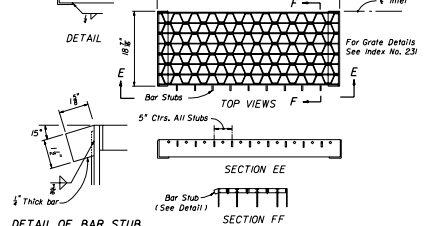
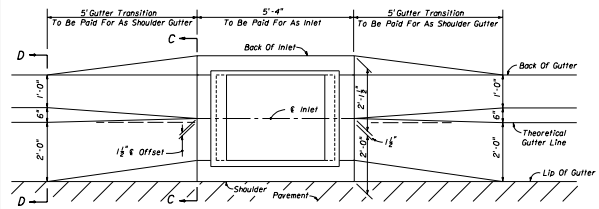
NOTE: All, B Structure Bottom Only. See Index No. 200 for structure bottom details and hole reinforcement.

INLET WITH STRUCTURE BOTTOM



GENERAL NOTES

1. This inlet with parallel bar grate shall be used for limited access facilities and other bicycle restricted facilities subject to heavy loads and, may be used in locations where inlets Type A and B, with wide grate opening, are unacceptable. On limited access facilities with designated bicycle access and on all other facilities, including roads overpassing limited access highways, the retioluine grate shall be used.
2. Reinforcing steel all No. 4 bars at 12" centers both ways with 2" clearance to inside of walls and bottom. Bars to be cut or bent for 1/2" minimum clearance around pipe.
3. All exposed edges and corners shall be tool to 3/8" radius.
4. When Alternate G grate is specified in plans, the grate is to be hot dipped galvanized after fabrication.
5. For supplementary details see index Nos. 200 and 201.



STEEL GRATE

STATE OF FLORIDA DEPARTMENT OF TRANSPORTATION
ROAD DESIGN

GUTTER INLET TYPE S

DESIGNED BY	DATE	APPROVED BY	
DRAWN BY		SCALE	
CHECKED BY		NO. OF SHEETS	220