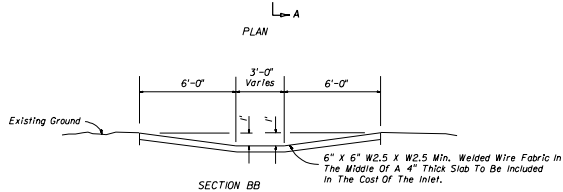
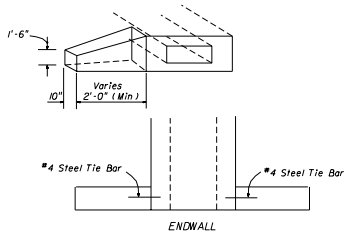


* Bricks To Dissipate Energy When Called For In Plans. Bricks To Be Included In The Cost Of The Inlet.

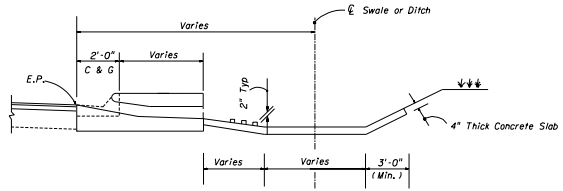
PLAN



SECTION BB

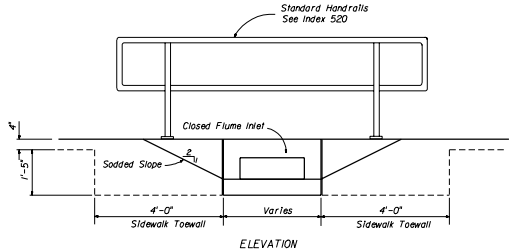


ENDWALL



Ditch Pavement To Be Adjusted When Inlet Present
SECTION AA

INLET • NO SIDEWALK BACK OF CURB



ELEVATION

INLET • WITH SIDEWALK BACK OF CURB

GENERAL NOTES

- 1. Chamfer all exposed edges $\frac{3}{8}$ "

STATE OF FLORIDA DEPARTMENT OF TRANSPORTATION ROAD DESIGN			
CLOSED FLUME INLET			
Drawn By	Scale	Approved By	
J.P.T.	AS SHOWN	A. A. [Signature]	
Checked By	Project No.	Sheet No.	Total
K.P.M.	00	2 OF 2	216