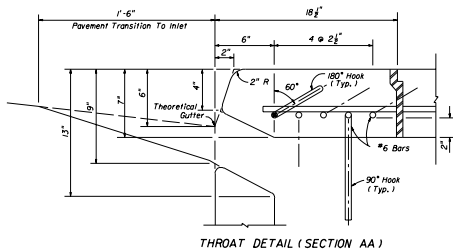
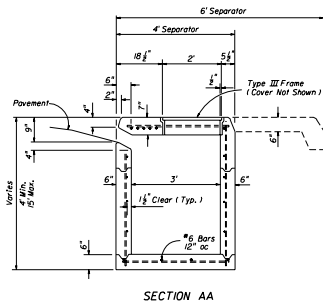
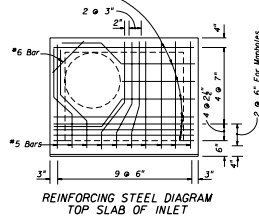


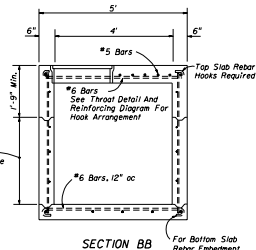
Const. Joints Permitted Between These Limits - See Index No. 201 For Minimum Dimensions.



#6 Bars ACI Std. Hooks Required Each End Of Straight Bars And Right End Of Bent Bars. 180° Hooks, Cont'd 60° (+). On Odd Bars; 90° Hooks, Down, On Even Bars Numbered From Throat Side.



Const. Joints Permitted Between These Limits - See Index No. 201 For Minimum Dimensions.



For Bottom Slab Rebar Embedment Options See Optional Construction Joints, Index No. 201.

GENERAL NOTES

- This inlet is to be used only in Traffic Separators Types III and II or, in separators constructed with Curb Types 3 and 1 and sidewalk paving, which cannot accommodate inlets Types 1, 2, 3, 4, 5 or 6. Use of this inlet on the through traffic side of the separator should be avoided in medians constructed with Curb Type D (Curb inlets Types 9 or 10 are recommended). Locate inlet outside of pedestrian cross traffic.
- Reinforcing #4 bars at 12" centers unless otherwise noted. Cut or bend bars out of way of pipe when necessary. Bars to clear pipe by 1 1/2".
- Recommended maximum pipe sizes are 24" longitudinal and 30" transverse. For larger pipe, inlets with A1, B bottoms, Index No. 200 are recommended.
- For supplemental details see Index No. 201.
- Inlet to be paid for under the contract unit price for inlets (Curb) (Type 8), Each.

STATE OF FLORIDA DEPARTMENT OF TRANSPORTATION ROAD DESIGN			
CURB INLET TYPE 8			
DESIGNED BY	DATE	APPROVED BY	
108	07/88	<i>J. A. McNamee</i>	STATE OF FLORIDA HIGHWAY
DRAWN BY	DATE	REVISION	SCALE
108	07/88		1" = 1'
CHECKED BY	DATE	NO.	OF
10	07/88	00	1
			213