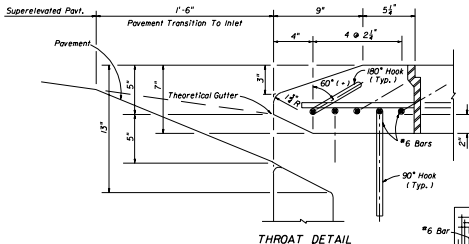
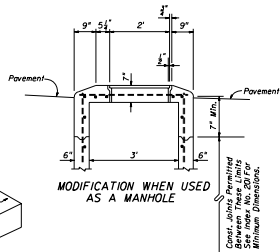
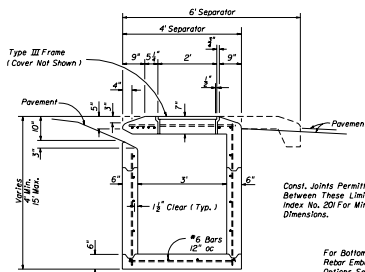
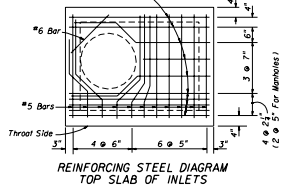


MODIFICATION WHEN USED AS A MANHOLE



THROAT DETAIL

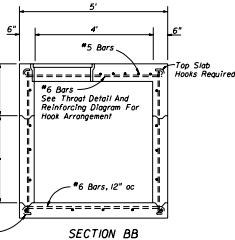
#6 Bars
 All Slab Hooks Required Each End Of
 Straight Bars And Right End Of Bent
 Bars: 180° Hooks, Cantd 60° (+), On
 Odd Bars; 90° Hooks, Down, On Even
 Bars Numbered From Throat Side.



SECTION AA

Const. Joints Permitted
 Between These Limits-See
 Index No. 201 For Minimum
 Dimensions.

For Bottom Slab
 Rebar Embedment
 Options See Optional
 Construction Joints,
 Index No. 201.



SECTION BB

GENERAL NOTES

1. This Inlet is used in Traffic Separators Types I and II; or, in separators constructed with Curb Types A, B and E and sidewalk paving, which cannot accommodate Inlets Types 1, 2, 3, 4, 5, or 6. Use of this inlet on through traffic side of the separator is not permitted in medians with Curb Types A and B. Locate Inlet outside of pedestrian cross traffic.
2. Reinforcing: #4 bars @ 12" centers unless otherwise noted. Cut or bend bars out of way of pipe when necessary. Bars to clear pipe by 1 1/2".
3. Recommended maximum pipe sizes are 24" longitudinal and 30" transverse. For larger pipe, inlets with A11, B bottoms, Index No. 200 are recommended.
4. For supplementary details see Index No. 201.
5. Inlet to be paid for under the contract unit price for Inlets (Curb) (Type 7), Each.

STATE OF FLORIDA DEPARTMENT OF TRANSPORTATION
 ROAD DESIGN

CURB INLET
 TYPE 7

Checked By	MM	DATE	00	Approved By	I. A. McHenry
Drawn By	HSD	DATE	00	Scale	AS SHOWN
Checked By	JL	DATE	00	Sheet No.	212