

Printing Overview

JIMMIE PROW

ecso.support@dot.state.fl.us

Topics Covered

Print Drivers

Pen Tables

Print Styles

Single Sheet Printing

Print Organizer

Sheet Navigator

Q&A

Types of Print Drivers

Postscript	System Drivers	HPGLRTL	PDF
Recommended for printing to paper.	Can be used for paper when printer does not support postscript.	Recommended for large format prints with raster.	Create single or multi-page PDF
Least user input required.	Single driver can use all printers in “Devices and Printers”		
Must be assigned to a printer or port.	Scale must be entered for each print.		

Print Drivers

Postscript	System Drivers	HPGLRTL	PDF
hp5000.pltcfg	fdotprinter.pltcfg	hpglrtl.pltcfg	FDOTPDF.pltcfg
hp1055.pltcfg		hpglrtl_c.pltcfg	Color_FDOTPDF.pltcfg
hp1055c.pltcfg			

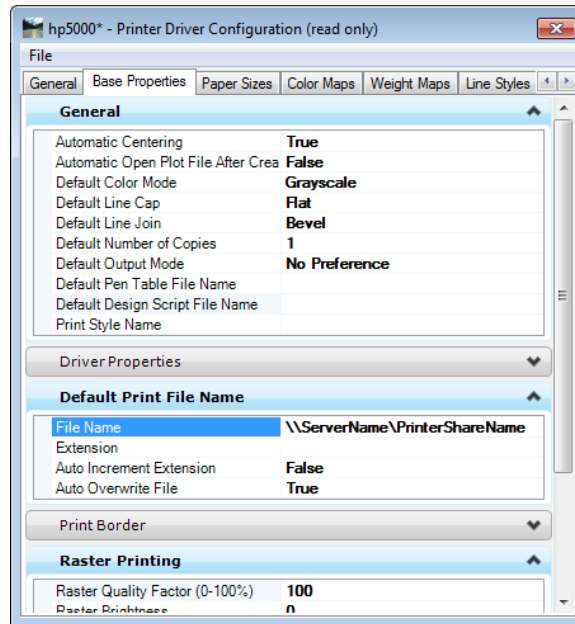
All of the FDOT provided drivers are capable of printing raster. If your image is not printing check the level the image is on to ensure it is not a non-plotting level.

Editing Drivers

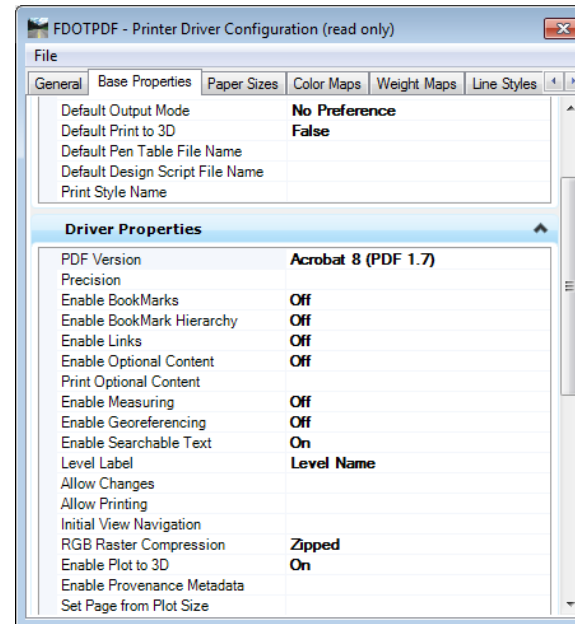
POSTSCRIPT

Postscript drivers require you to define an output device

- Shared Printer:
\\SERVER\PRINTER
- Port: LPT3



PDF



PDF drivers have many enhanced functions that are turned off by default to increase speed.

PDF driver is the only type that can print “Transparency” without using the Rasterized option

Pen Tables

Pen Tables are a very effective method of customizing printed output.

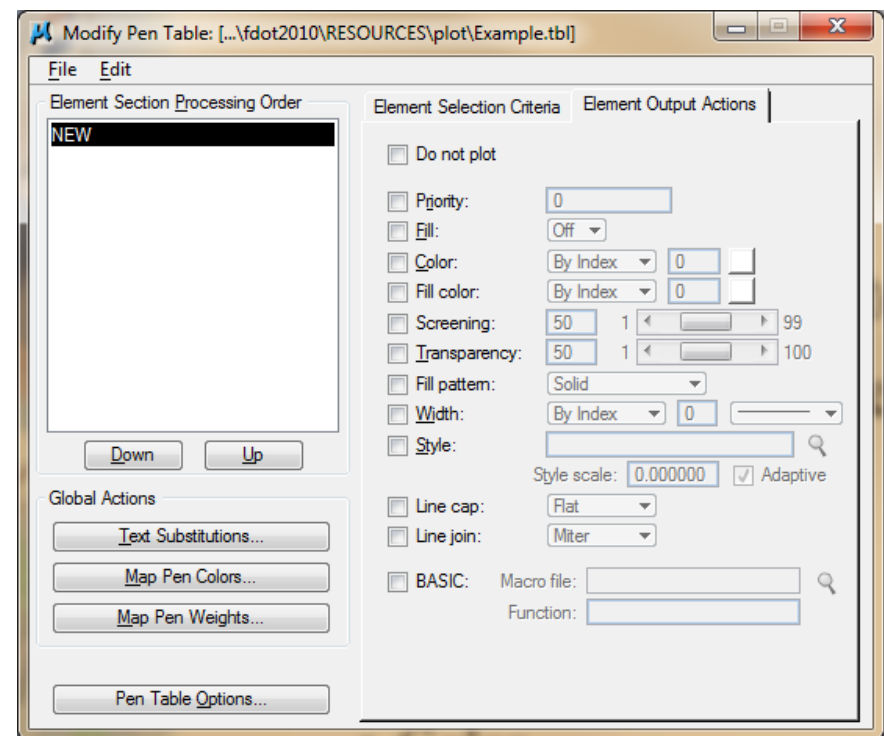
- Modify anything from an entire file to a single element.
- Turn elements off.
- Change the symbology.
 - Color
 - Weight
 - Style
- Change the order (priority) so elements are always printed on to or below other.

Pen Tables Are Easy

Editing a pen table is very easy. It has 3 basic steps.

1. Insert a Section
2. Define Selection Criteria
3. Define Output Actions

It's like creating a selection set and changing symbology for prints.

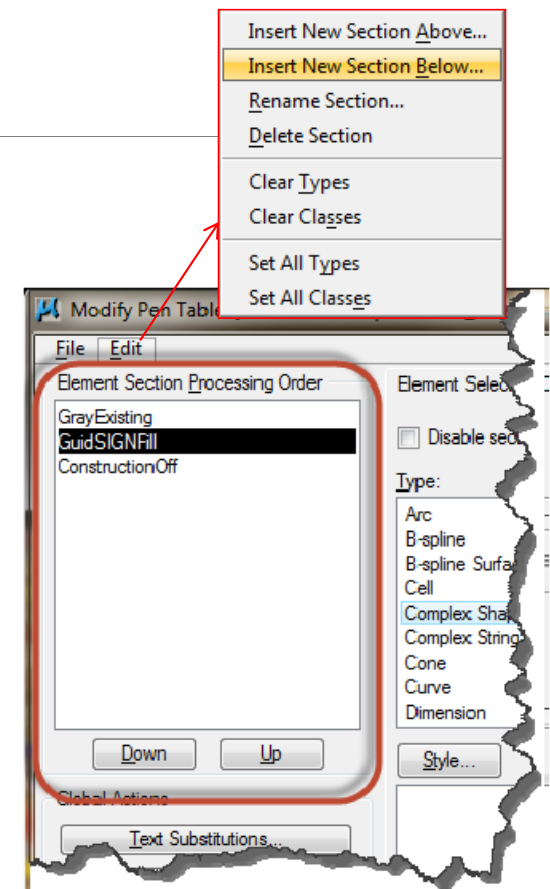


1. Insert a Section

Insert a section into the “Element Section Processing Order” field.

This holds the Selection Criteria and Output Actions for a particular change.

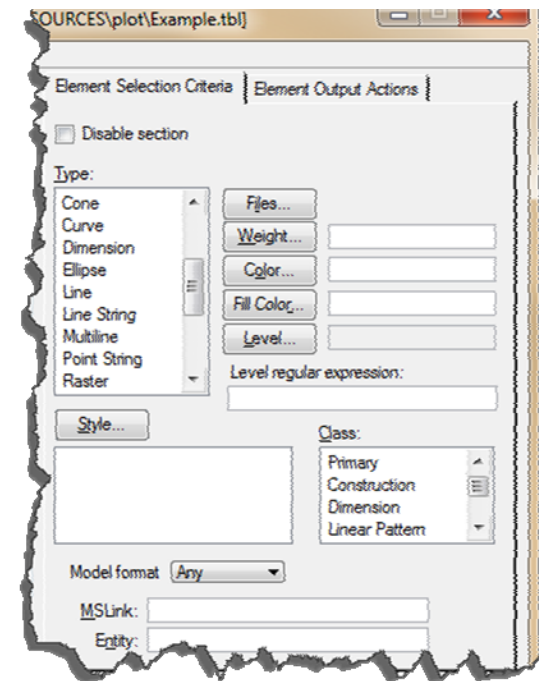
Adjust order as needed.



2. Define Selection Criteria

Element Selection Criteria is used to identify the elements to change.

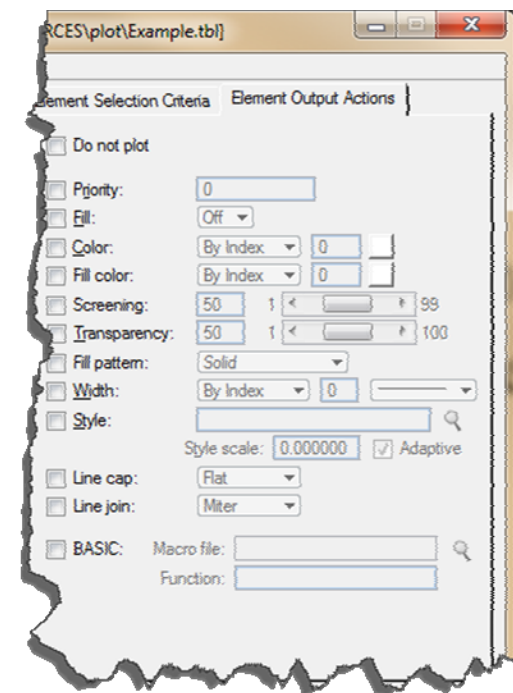
- Define enough properties to uniquely identify the element.
- All properties are not required.



3. Define Output Actions

Element Output Action is used to define the change in printed symbology.

- Check the box by the attribute to be modified.
- Set new attribute properties



Print Styles

Print Styles allow you to define and reuse named collections of print definition properties.

- Paper Size
- Pen Table
- Plot Driver
- Fence Definitions (plot border)

They can be used in both Print Organizer and the Print dialog.

Where are Print Styles Stored?

Print Styles are stored in DGN Library (DGNLIB) files.



In the FDOT workspace the default styles, are stored on the server in FDOT_PrintStyles.dgnlib.



Site specific Print Styles can be stored in a file named Custom_PrintStyles.dgnlib in the FDOT2010\RESOURCES\Dgnlibs directory on the server.



User specific Print Styles can be stored in a file named USER_PrintStyles.dgnlib in the local \FDOT2010\Workspace/prefs/ directory.



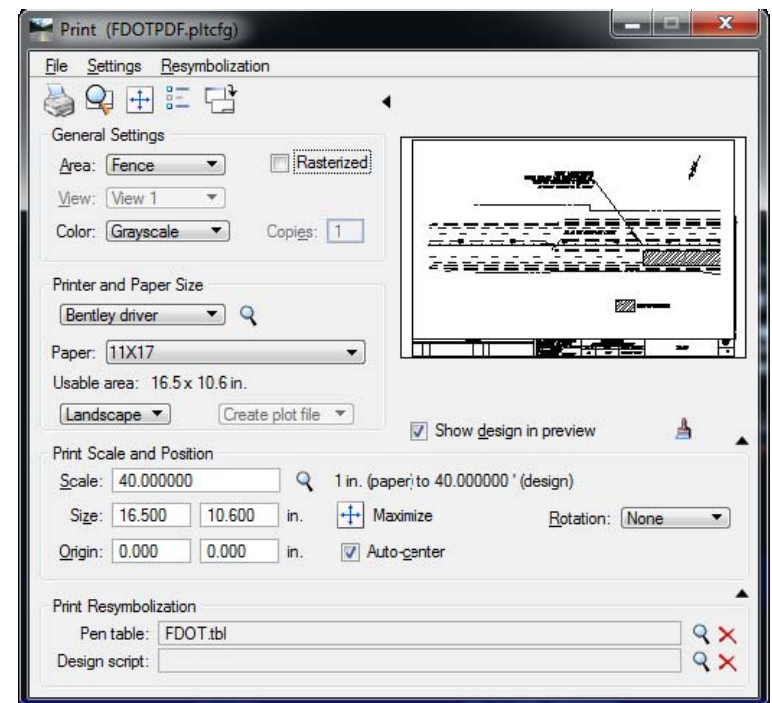
Project specific Print Styles can be stored in the symb directory.

Single Sheet Printing

Select “Settings > Apply Print Style” to quickly apply all settings, including the fence.

Dialog was updated to include Pen Table field.

Now supports (InterPlot) Design Scripts



Using Print Styles in Print Dialog

There are many benefits to using Print Styles in the single sheet Print dialog.

- No need to place a fence.
- No need to select a plot driver.
- No need to select a pen tables.
- No need to adjust display settings.

Once a Style has been applied you can override settings if needed

Print Organizer

Some best practices when using Print Organizer include:

- Make sure all sheets will print as expected using the same print driver. All sheets in the Print Set (PSET) will be printed using the same PLTCFG file.
- Make sure print styles and the print driver (PLTCFG) do not set the same properties. One will wind up overriding the other and you may not get the desired results.
- Do not reapply print styles to print definitions. The file is only scanned for borders the first time. If a print style is reapplied to a file that has multiple sheets the first sheet will be used for all print definitions.

Print Organizer FAQs

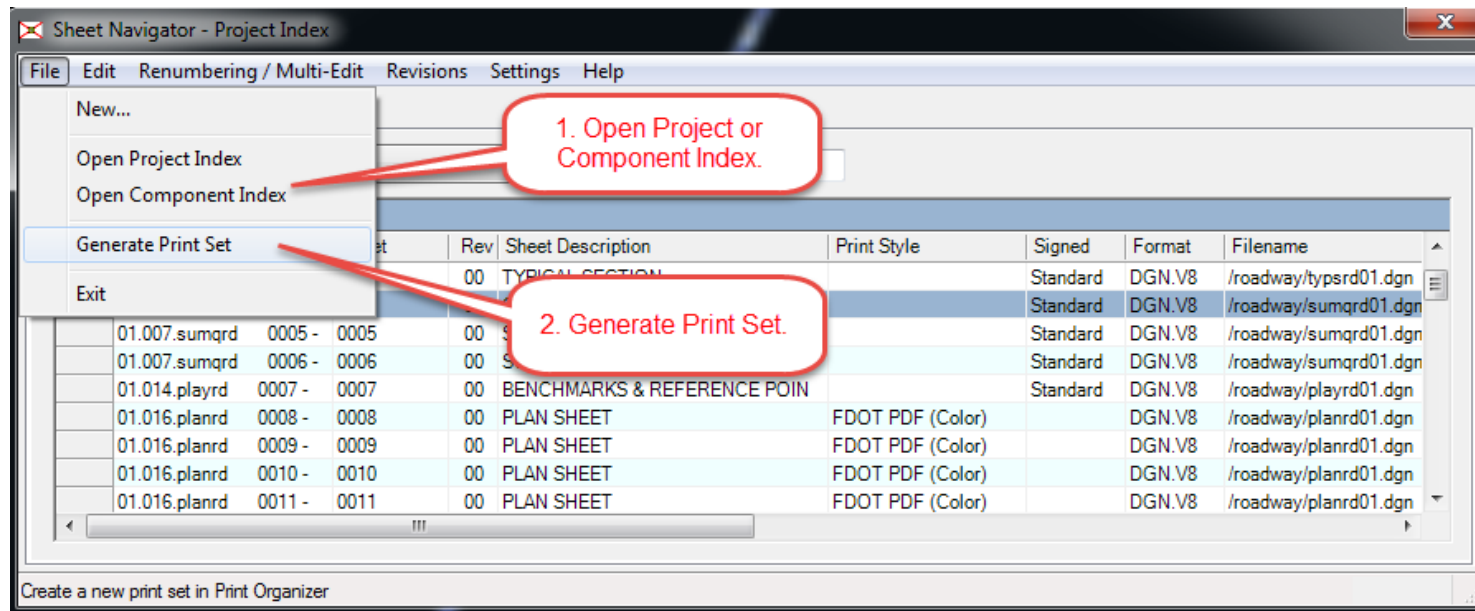
- Q. Why do I only get the first sheet of my cross sections over and over when I print.
 - A. Do not reapply print styles to print definitions. The file is only scanned for borders the first time. If a print style is reapplied to a file that has multiple sheets the first sheet will be used for all print definitions.

- Q. My rasters will not print from the Print dialog or in Print Organizer.
 - A. Make sure the raster image is not on a non-plotting level.

- Q. My rasters will print from the Print dialog but are not printing in Print Organizer.
 - A. Confirm that Raster is enabled in Print Definition properties. If it still doesn't work try printing it using the "FDOTSS2 (no GEOPAK)".

Sheet Navigator

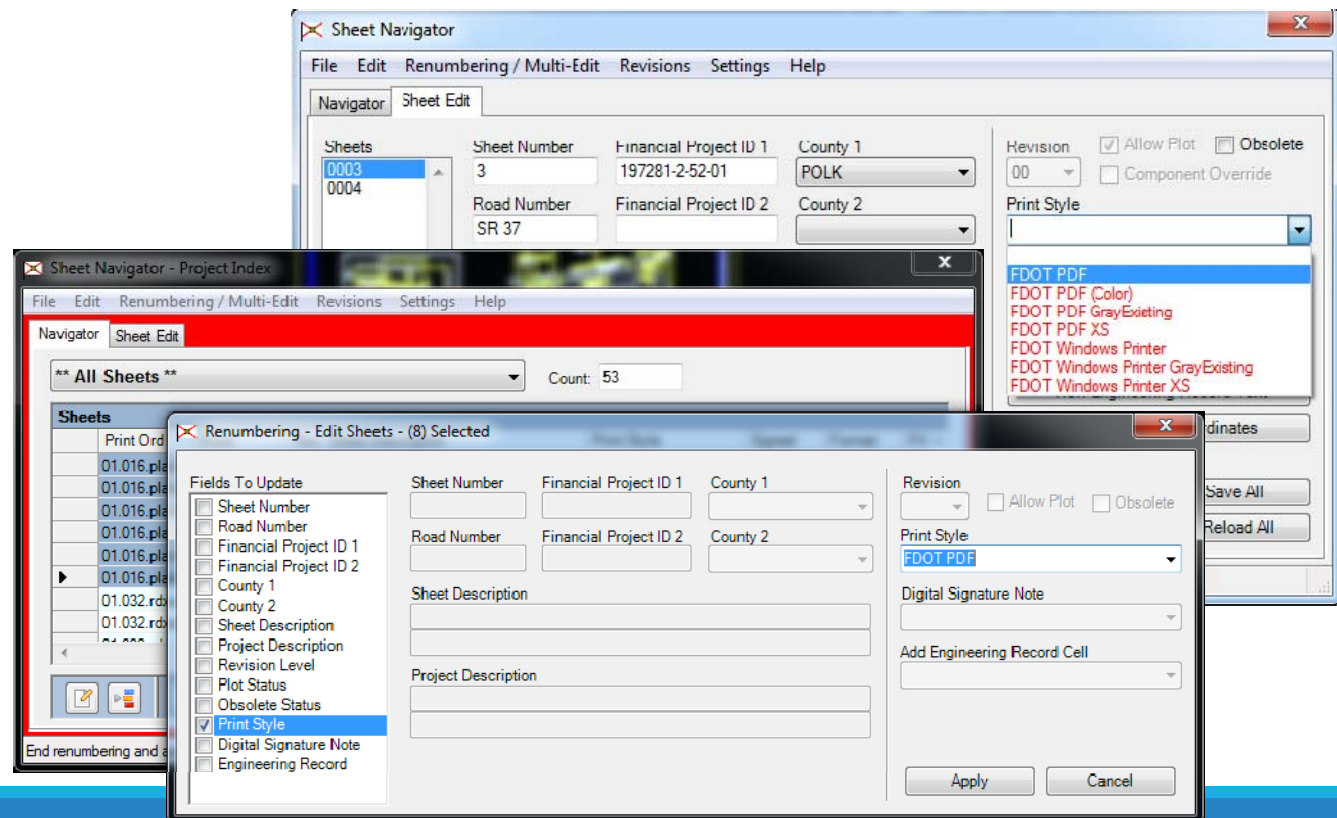
Sheet Navigator can generate Print Organizer PSETs from the Project Index.



Sheet Navigator – Print Styles

Print Styles can be applied in the Sheet Edit tab or by using the Multi-Edit process.

If no Print Style is defined a default style is applied.



ecso.support@dot.state.fl.us

Questions

Questions about this process can also be sent to ecso.support@dot.state.fl.us or posted on our Be Community site at:

http://communities.bentley.com/communities/user_communities/fdot_cadd_support/default.aspx