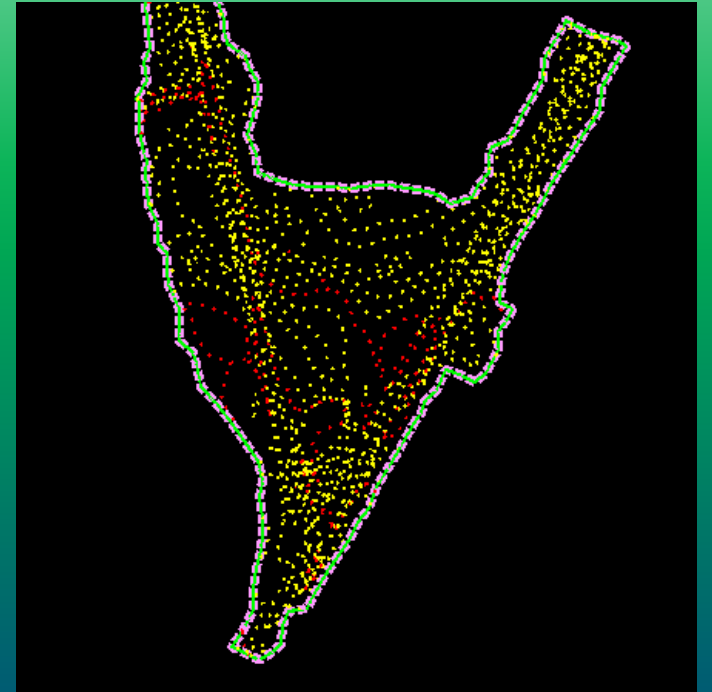
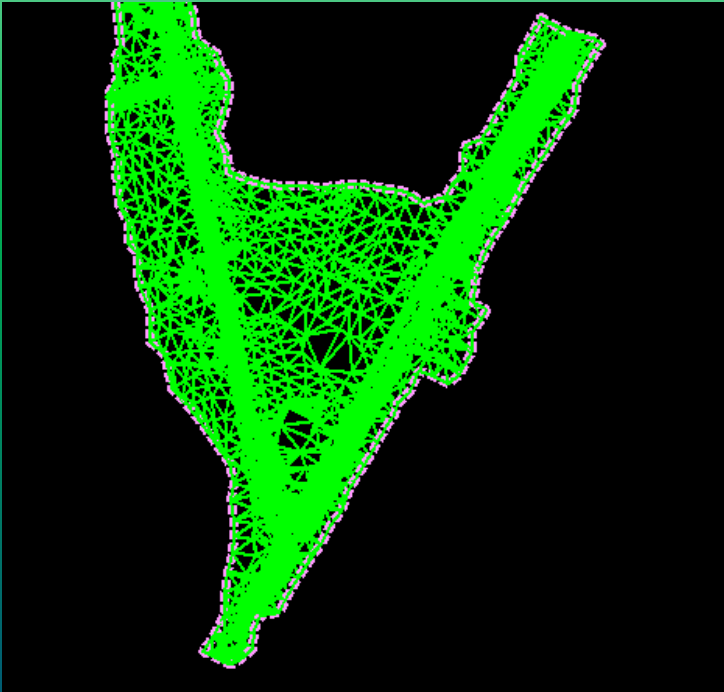


# *How to Handle Multiple Displays in a Terrain File*



Presented by:

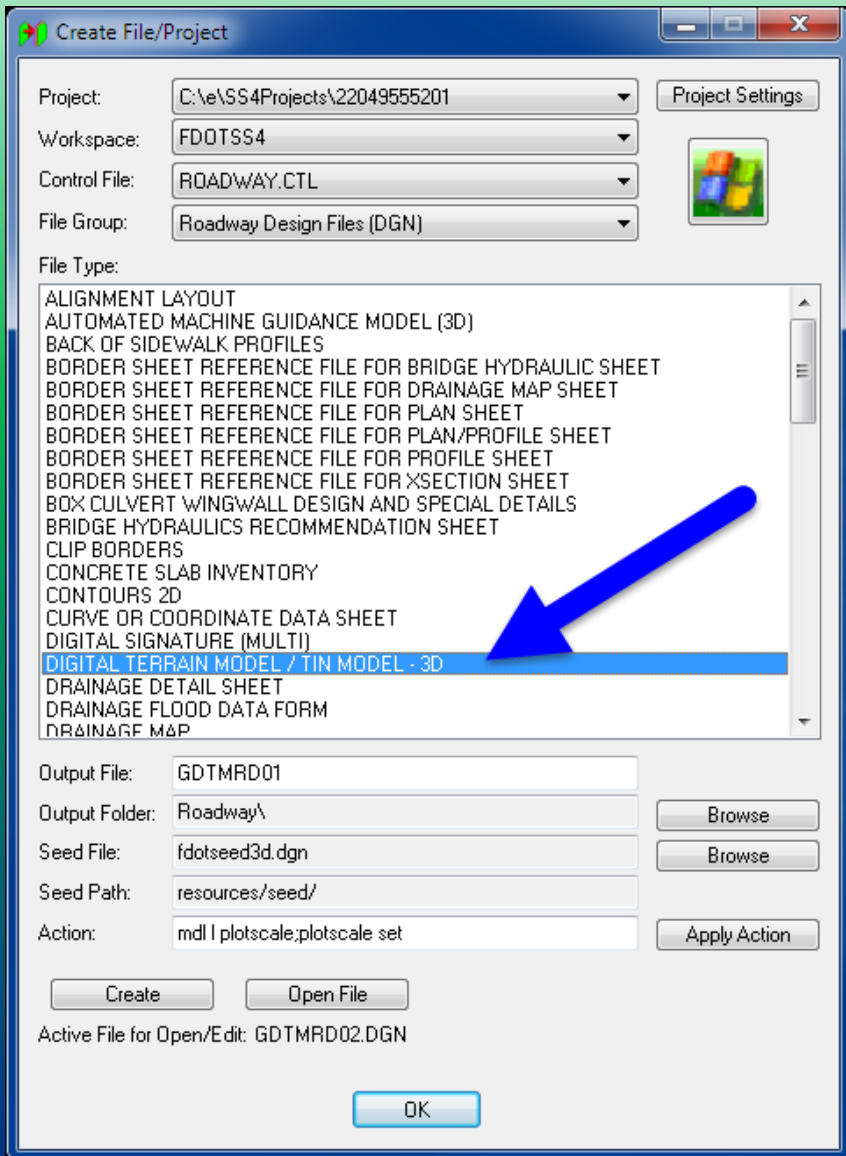
Denise Broom

CADD Support Specialist

# *Basic Workflow*

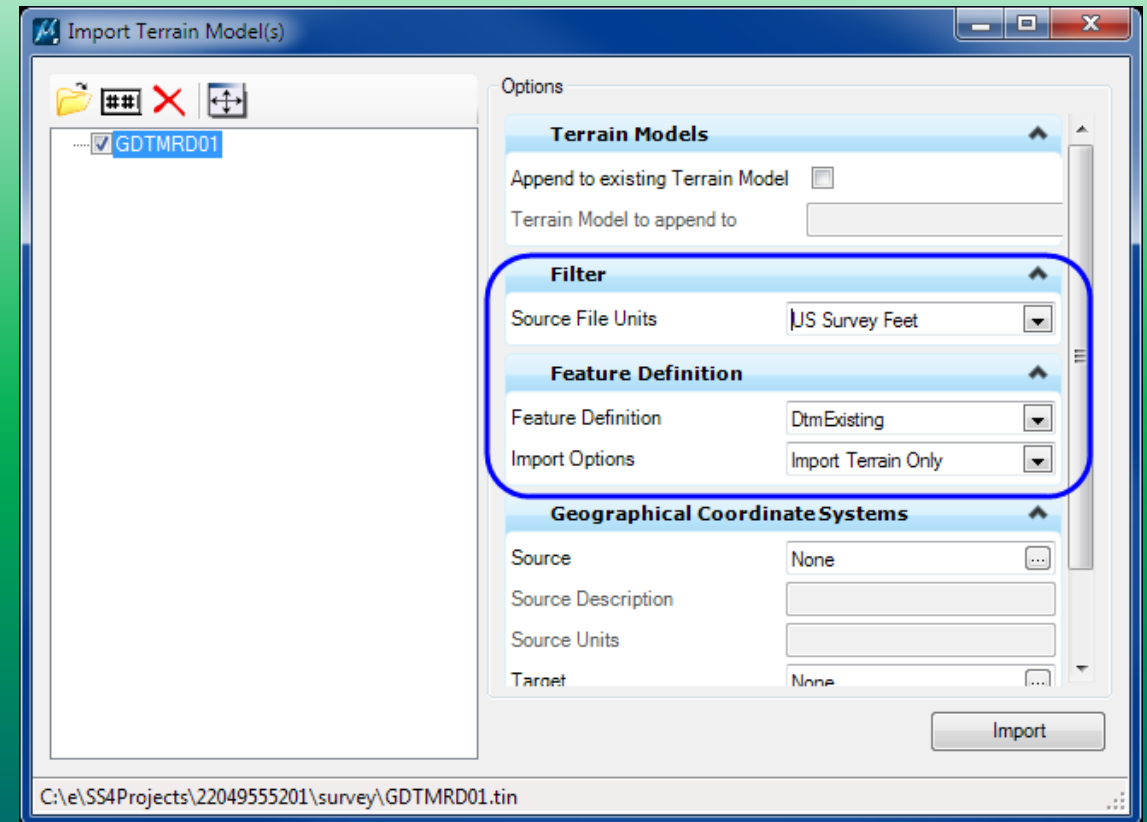
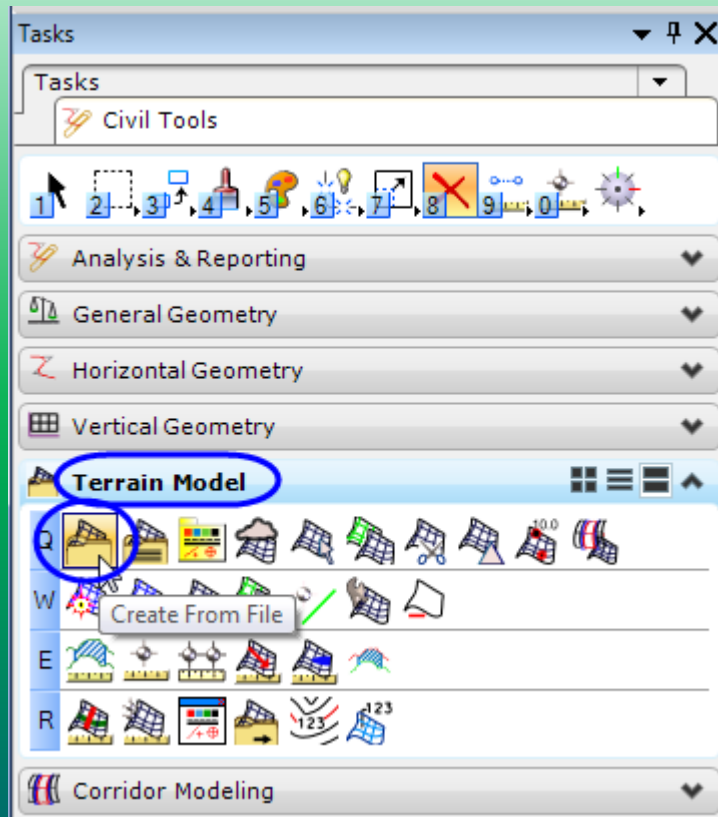
- *Create the DTM file.*
- *Import the Terrain from TIN file*
- *Create New Models...*
  - *Contours*
  - *Triangles*
- *Set Up Models for Display*
- *Reference to Other Files*

# Create the DTM File



- *Create File/Project*
  - *Under Roadway.CTL and Roadway Design Files (DGN)*
  - *Digital Terrain Model/ TIN Model - 3D*

# Import the Terrain

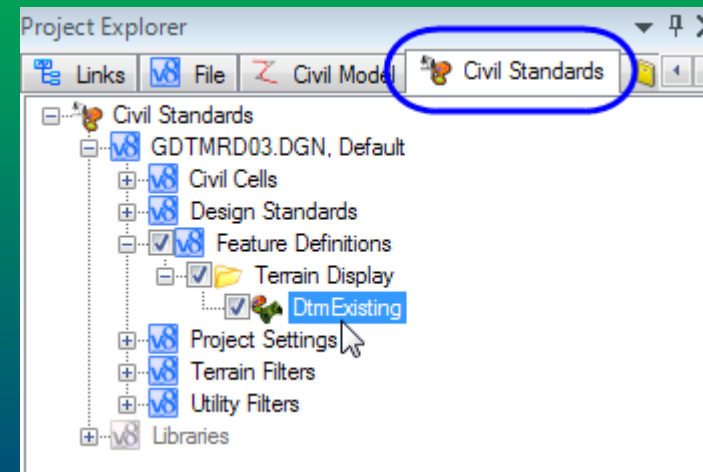
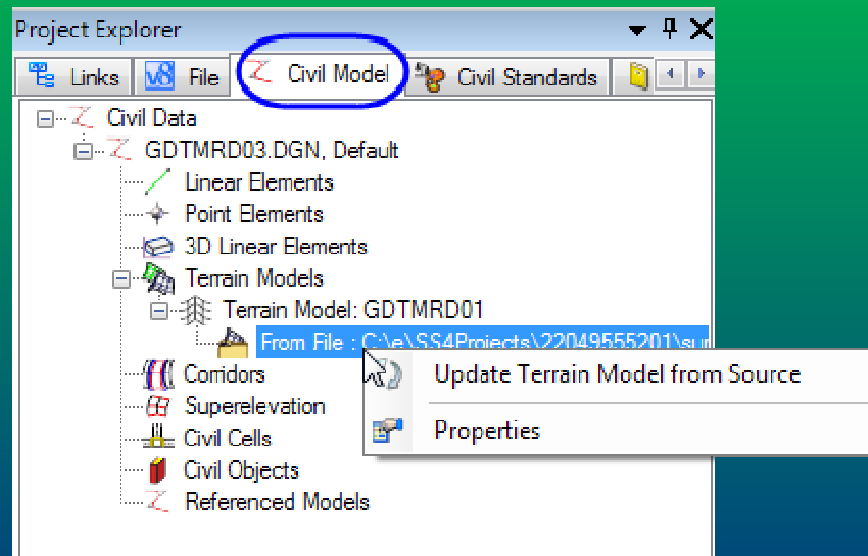


*Other options also available for Creating/Importing...*

- From ASCII File
- By Graphical Filter
- From Point Cloud
- From Elements

# Import the Terrain

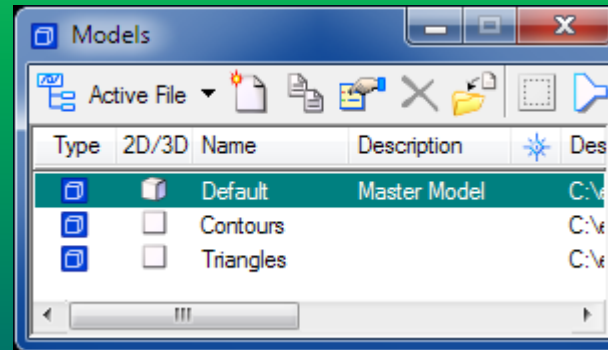
- *Default Model contains the original imported data.*
- *Project Explorer (In the Model with imported data)*
  - *Civil Model - Can be used to update the data from the source.*
  - *Civil Standards - View the Terrain Feature Definitions in the Active File.*



# Create New Models

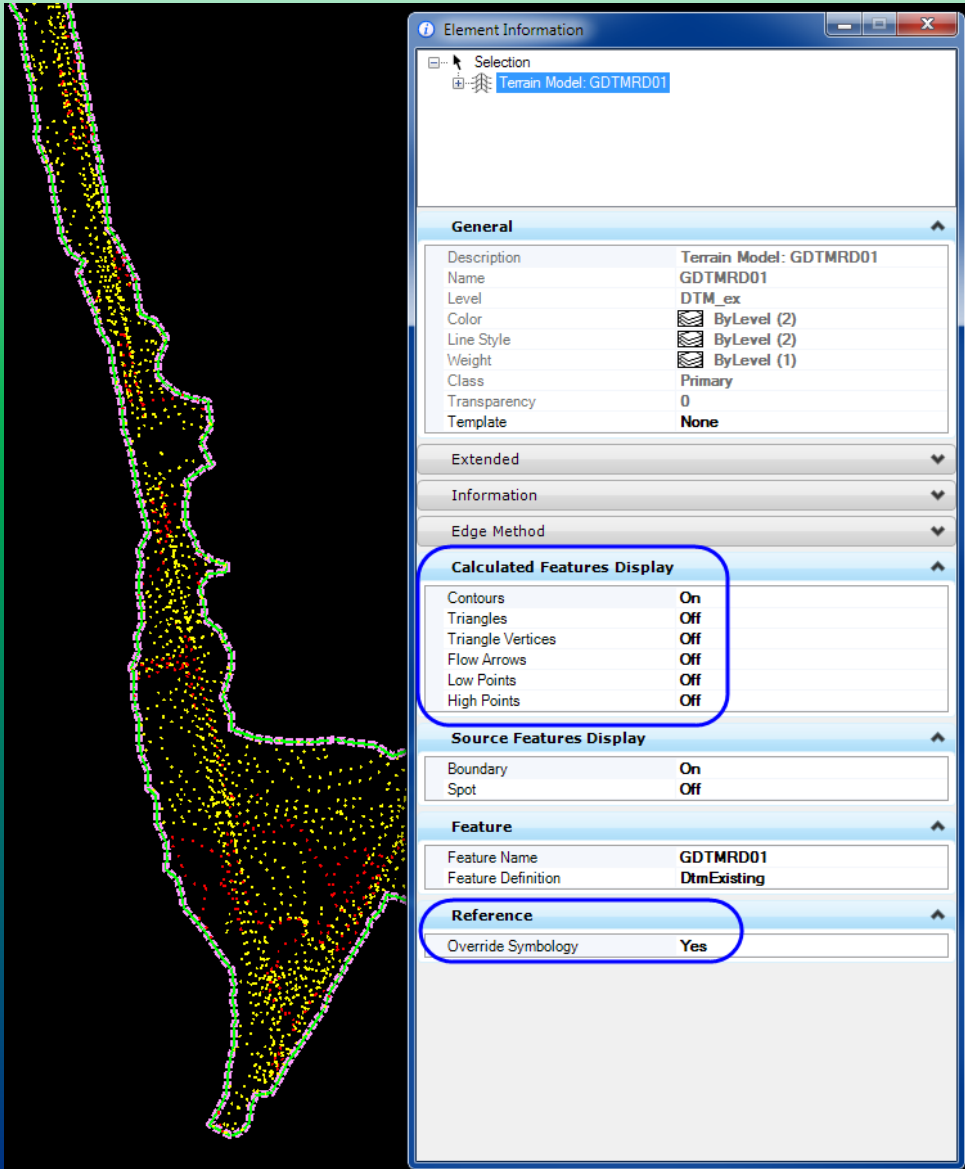
- *Create New Models...*
  - *2D models that will be used to reference to other design files when the information is needed.*
  - *Recommended*

- *Contours*
- *Triangles*



- *Note: In SS4, these will be set up with the file when Create File/Project is used to create the GDTMRD file.*

# Set Up Models for Display



- Reference the Default model to the current model (Contours or Triangles)
- Select the boundary element of the Terrain and then select Element Information.
- Turn On the option you would like to see displayed under Calculated Features Display.
- Turn On Override Symbology
  - This keeps the settings from changing the view/display in the Default model.

# Set Up Models for Display

The image displays two screenshots of the 'Element Information' dialog box in a GIS application, showing the configuration for terrain models.

**Left Screenshot: Contours Settings**

Contours	
Max Slope Option	None
Max Slope Value	0
Contour Label Precision	0
Smoothing factor	5
Smoothing	None
Major Interval	5.0000
Minor Interval	1.0000

**Right Screenshot: Major Contours Settings**

General	
Display	On
Level	ContoursMajor_ep
Color	ByLevel (3)
Line Style	ByLevel (1)
Weight	ByLevel (1)
Transparency	0

Contour Labels	
Display Text	Yes
Text Style	FDOT (Small)
Text Interval	50.0000

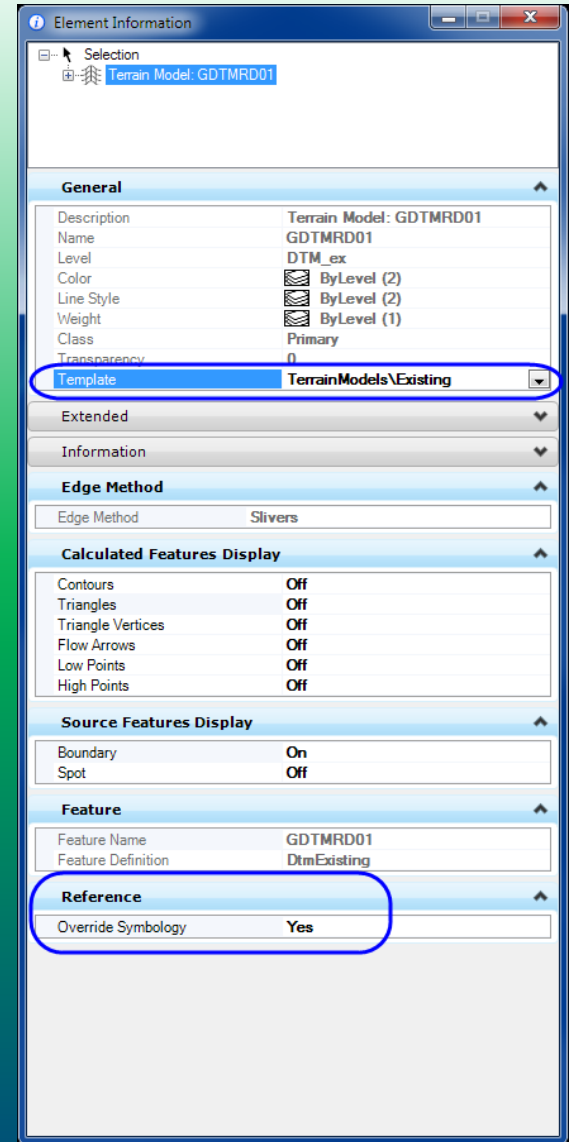
Depression	
Color	ByLevel (3)
Line Style	ByLevel (1)
Weight	ByLevel (1)

- At the top of the *Element Information* dialog, expand the *Terrain Element* options.
- Under *Calculated Features Display > Contours*, options are available to change the settings for the interval, precision, and level symbology.
- *Text Style and Drawing Scale* controls the text size.



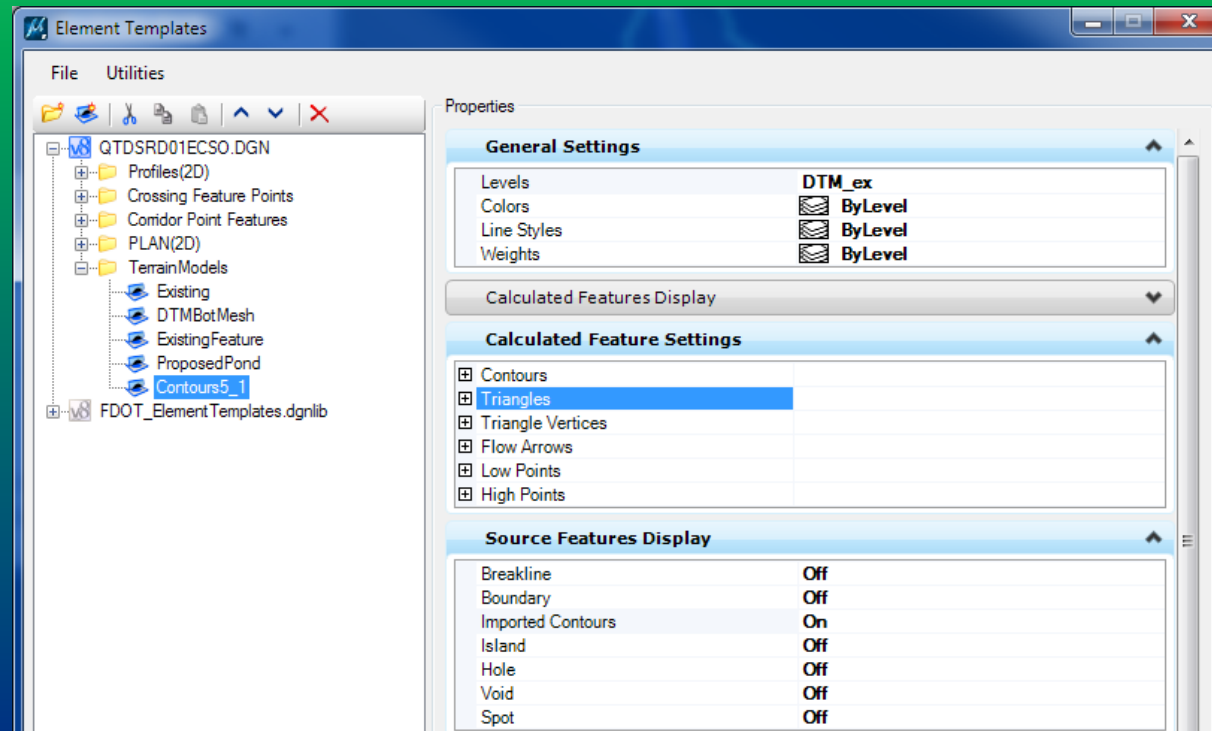
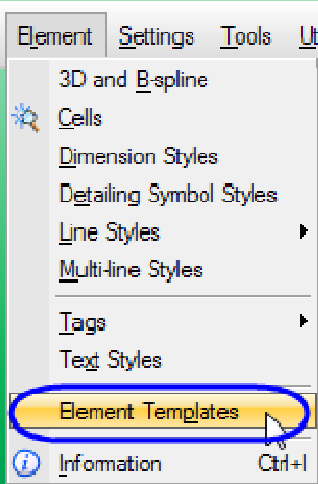
# Reference to Other Files

- *Select the Terrain element and then select Element Information.*
- *Turn ON the Override Symbology option under Reference.*
- *Select the Template to change the display setting, if desired. (I.E. contours, triangles, boundary, etc.)*
- *Note: When Referencing Contours or Triangles model, turn on Live Nesting.*



# Reference to Other Files

- *If a template does not exist with the desired display option, an Element Template can be added to the file.*



# Questions...

*Thank you for attending today's webinar.*

*Need some HELP? Contact me...*

*(850) 414-4751*

*E-mail: [Denise.Broom@dot.state.fl.us](mailto:Denise.Broom@dot.state.fl.us)*

*OR: [ecso.support@dot.state.fl.us](mailto:ecso.support@dot.state.fl.us)*

*<http://www.dot.state.fl.us/ecso>*

*FDOT CADD Support Forum On-line*

*[http://communities.bentley.com/communities/user\\_communities/fdot\\_cadd\\_support/default.aspx](http://communities.bentley.com/communities/user_communities/fdot_cadd_support/default.aspx)*