



ENGINEERING / CADD SYSTEMS OFFICE

FDOT SS4 MR1 Update

Christiana Holmes

Topics Covered

- System Requirements for MR1
- Updated Manuals
- Upcoming Training
- The **NEW** FDOT YouTube Channel
- Workspace Enhancements
- 3D Drainage Cells and SUDA
- New Civil Cells
- DDB and Pay items changes
- New LDM Tables and documents
- Survey Updates



System Requirements

FDOT SS4 MR1:

- Microsoft Windows 7
- 32 bit or 64 bit Operating Systems
- Microsoft .NET Framework 3.5
- Microsoft Office 2013
- PowerGEOPAK 08.11.09.845
- -or- MicroStation 08.11.09.714 w/ GEOPAK Suite 08.11.09.845
- **FDOT SS4 MR 1 Download:**
<http://www.dot.state.fl.us/ecso/downloads/software/FDOTSS4CaddSoftware.shtml>



Updated Manuals

- Plans Development Manual:
 - <http://www.dot.state.fl.us/ecso/downloads/documentation/FDOTPlanDevelopmentWorkflows/FDOTPlanDevelopmentWorkflows.shtm>
- **NEW!!** Digital Delivery Manual
 - Will be posted to the Training Manuals page this week!
- Updated CADD Manual
 - Will be released within the next 30 days!



Upcoming Training

- FREE Regional Training in D4:
 - February 23rd and 24th 2016.
 - <https://www.eventbrite.com/e/south-florida-regional-cadd-training-february-23-24-2016-tickets-19064817382>
- FDOT Design EXPO – Daytona Beach
 - June 13th thru June 15th 2016.
 - <http://www.dot.state.fl.us/officeofdesign/Training/DesignExpo/2016/default.shtm>
- Spring FLUG – Cocoa Beach
 - June 28th thru July 1st 2016.



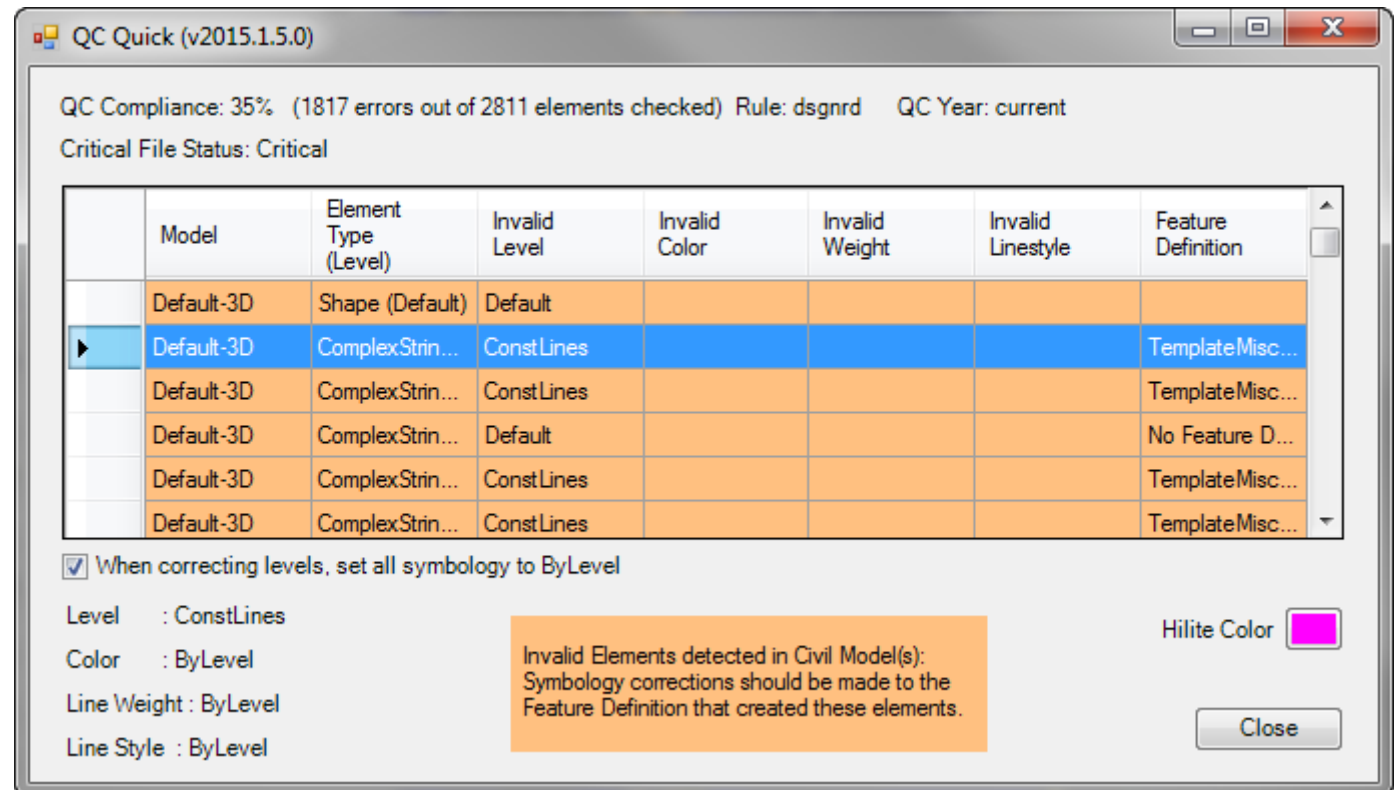
FDOT CADD Office YouTube Channel

- 4 YouTube Channels:
 - **Main Channel** – FDOT CADD Office: will host all subsequent channels. Also, will display updates and upcoming training.
 - <https://www.youtube.com/channel/UCT2GSoQtPEMg7jjUlee67fw>
 - Subsequent Channels
 - FDOT CADD Training Channel
 - FDOT CADD Help Channel
 - FDOT Webinars Channel



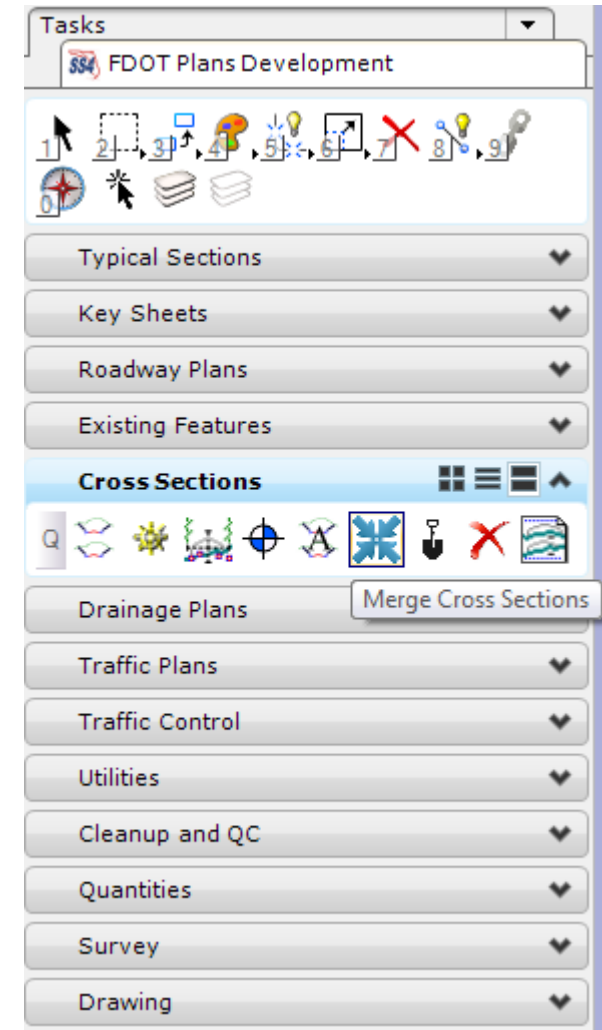
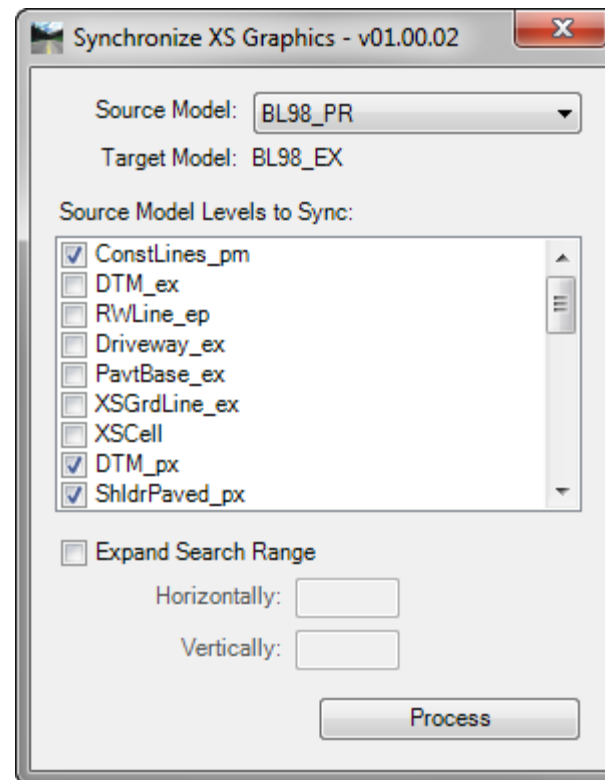
Workspace Enhancements

- QC Quick Check
 - Now includes checking for non-compliant features in the 3D model.
 - Does not fix the feature or level. They get highlighted QC Quick dialog.



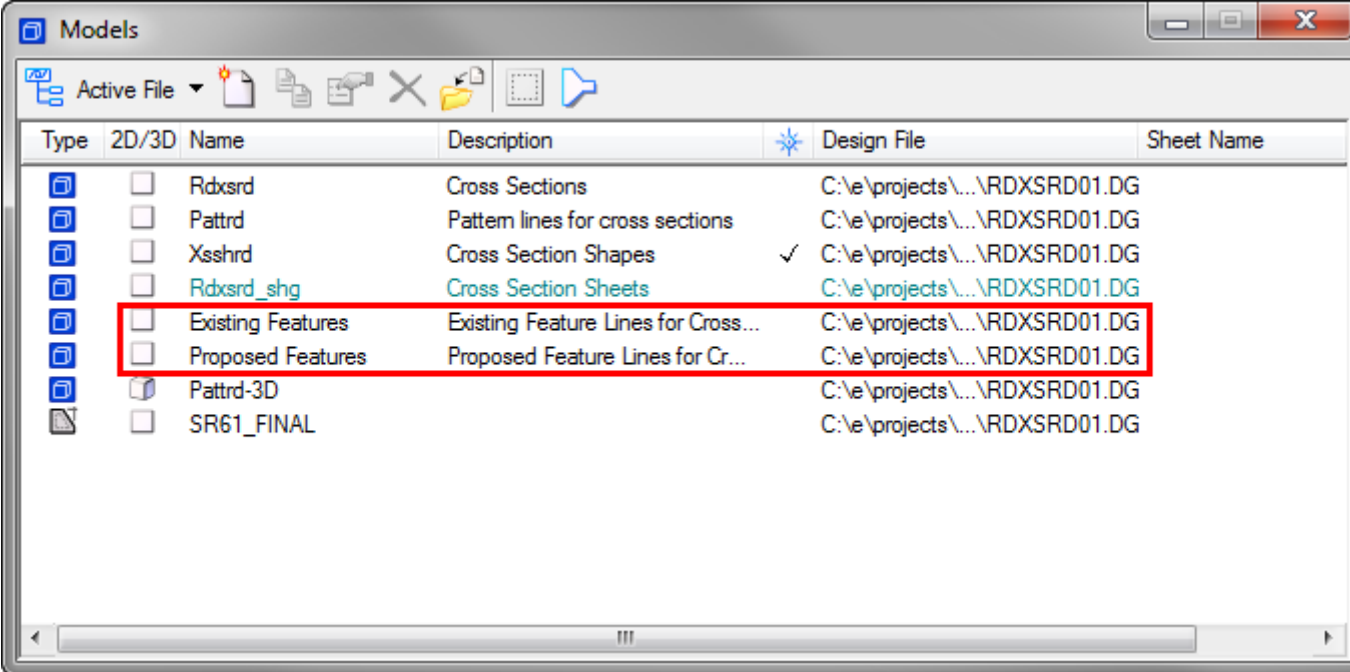
Workspace Enhancements









- Merge XS tool
 - Allows you to merge cross section models together.
 - FDOT Plans Development > Cross Sections > Merge Cross Sections.



Workspace Enhancements

- XS Models
 - There are 2 new models that are created in the XS file:
 - Existing Features
 - Proposed Features



Type	2D/3D	Name	Description	Design File	Sheet Name
	<input type="checkbox"/>	Rdxsrd	Cross Sections	C:\e\projects\...\RDXSRD01.DG	
	<input type="checkbox"/>	Pattrd	Pattern lines for cross sections	C:\e\projects\...\RDXSRD01.DG	
	<input type="checkbox"/>	Xsshrd	Cross Section Shapes	✓ C:\e\projects\...\RDXSRD01.DG	
	<input type="checkbox"/>	Rdxsrd_shg	Cross Section Sheets	C:\e\projects\...\RDXSRD01.DG	
	<input type="checkbox"/>	Existing Features	Existing Feature Lines for Cross...	C:\e\projects\...\RDXSRD01.DG	
	<input type="checkbox"/>	Proposed Features	Proposed Feature Lines for Cr...	C:\e\projects\...\RDXSRD01.DG	
	<input type="checkbox"/>	Pattrd-3D		C:\e\projects\...\RDXSRD01.DG	
	<input type="checkbox"/>	SR61_FINAL		C:\e\projects\...\RDXSRD01.DG	

Workspace Enhancements

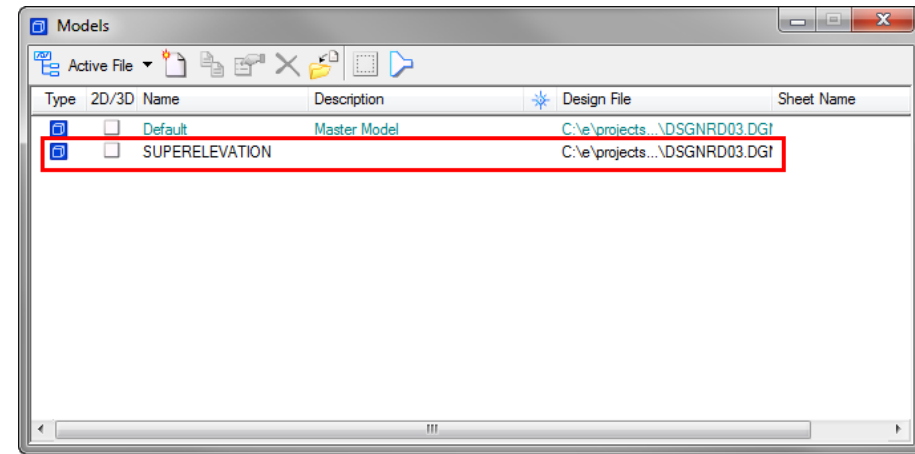
- Superelevation Tables
 - The eRounding parameter for the superelevation tables now round to the hundredth decimal place.

Superelevation	Name	Station	Curve Set	Cross Slope
left	left - 698+53	698+53.789 R1		-2.000%
left	left - 701+29	701+27.862 R1		-2.000%
left	left - 702+24	702+23.786 R1		0.000%
left	left - 703+19	703+19.709 R1		2.000%
left	left - 706+80	706+80.862 R1		9.530%
left	left - 712+15	712+13.907 R1		9.530%
left	left - 715+76	715+75.060 R1		2.000%
left	left - 716+71	716+70.983 R1		0.000%
left	left - 717+66	717+66.907 R1		-2.000%
left	left - 726+42	726+41.488 R1		-2.000%



Workspace Enhancements

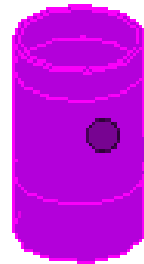
- “Super Model” or Superelevation Model
 - There is now a superelevation model that gets created when you create a DSGNRD file using the create file tool.



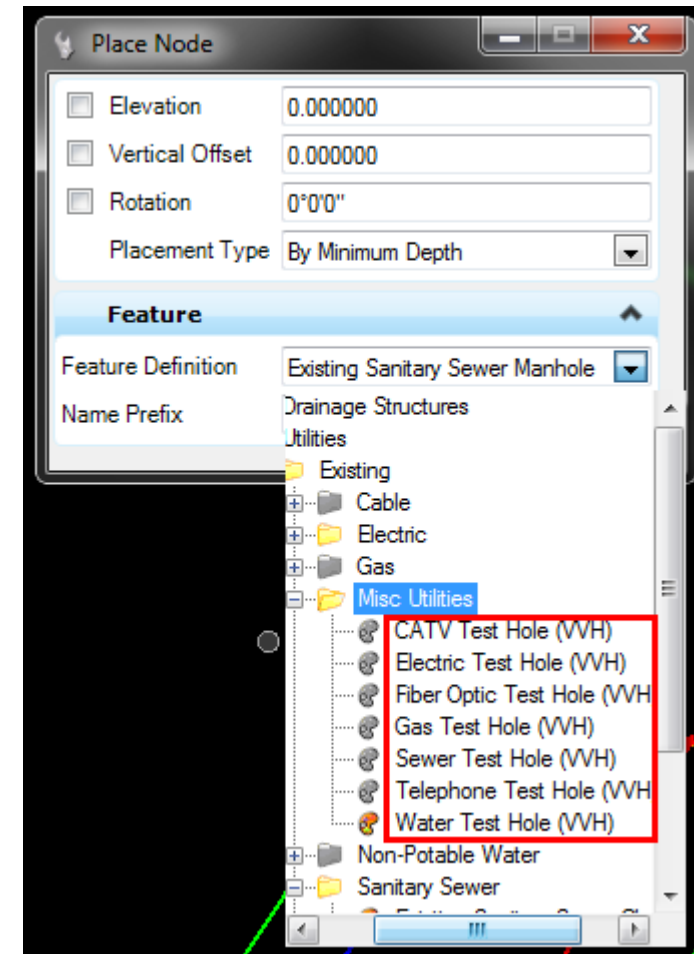
- Vertical Alignments
 - Vertical alignments now use K values instead of minimum curve lengths.

Workspace Enhancements

- Multiple test holes for utilities
 - There are now test holes for each type of utility (i.e. water, sewer, gas...)

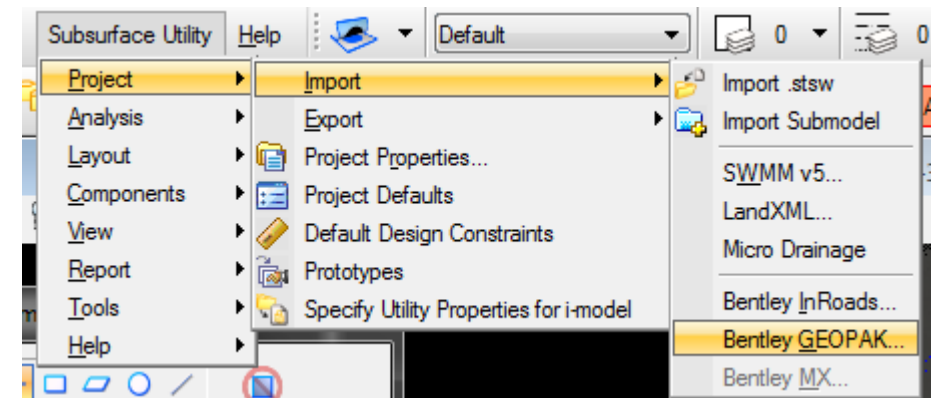
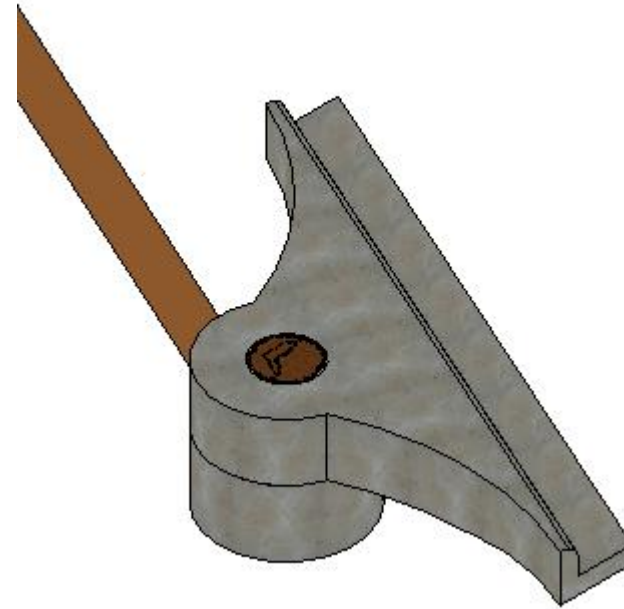


Node: VVH-3
Level: UtilsMisc



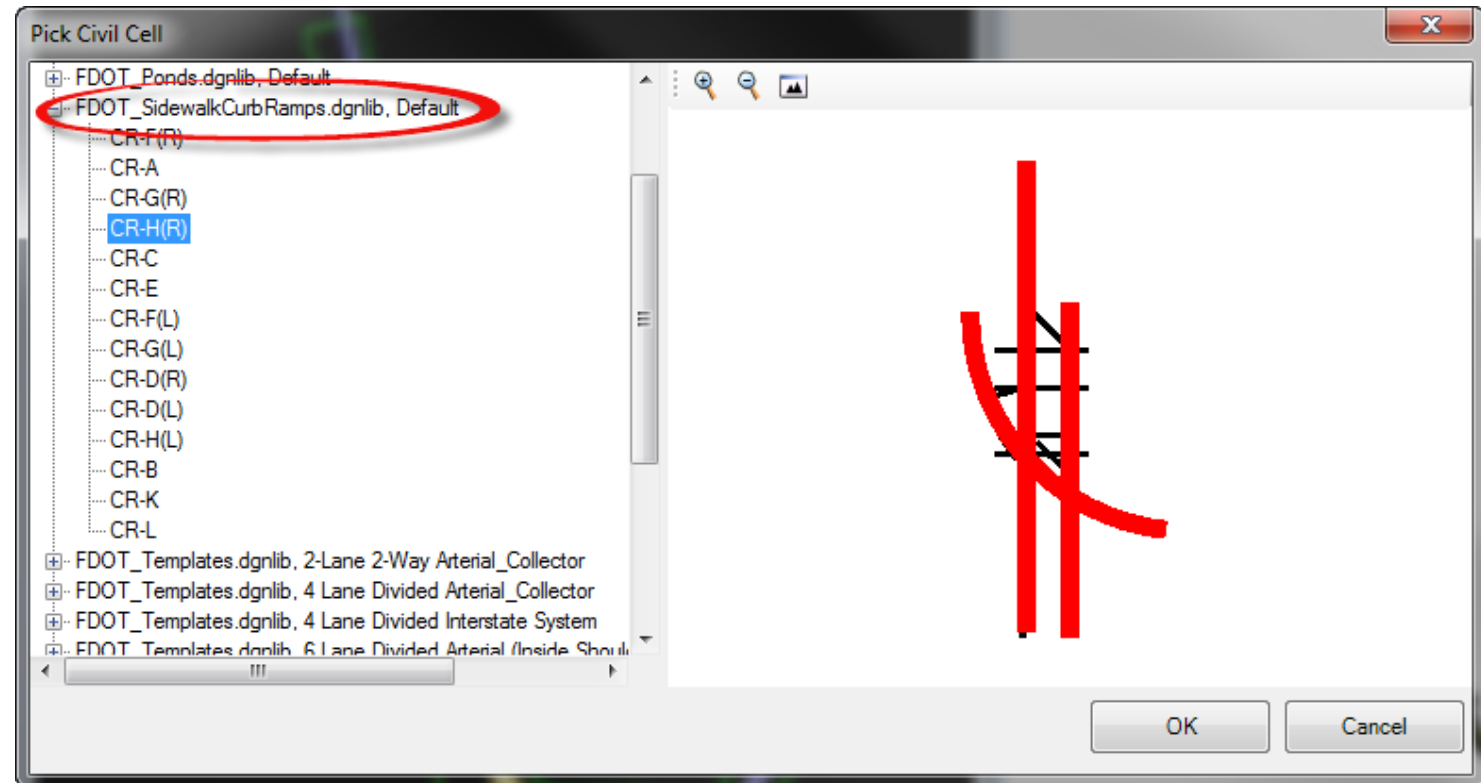
3D Drainage and SUDA

- 3D Drainage is now available!
- Existing GDF files can be imported into a 3D model.
- SUDA can be used to create drainage projects.
- Training will be coming soon!



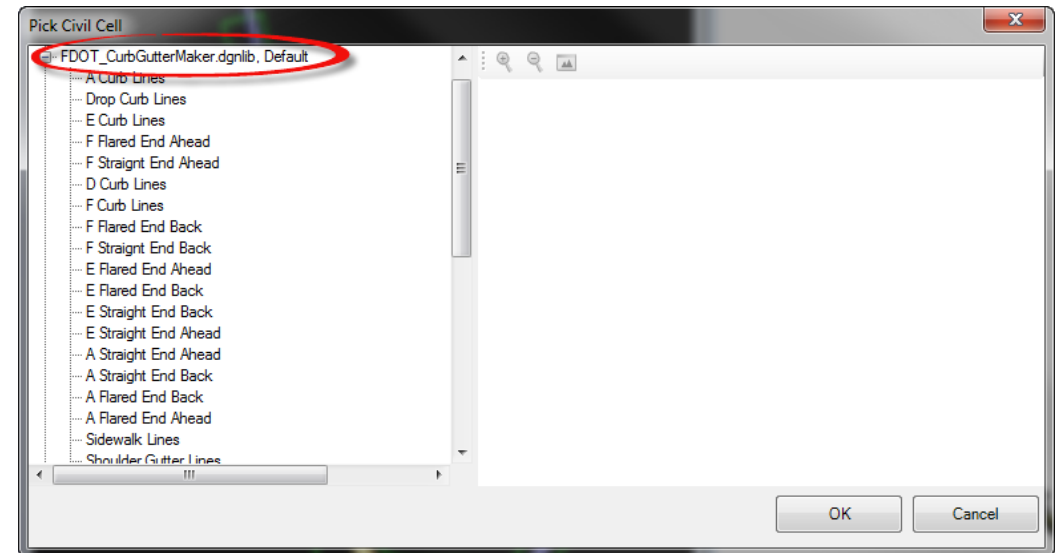
New Civil Cells

- Complete Set of Curb Cut Ramp Civil Cells
 - FDOT_SidewalkCurbRamps.dgnlib



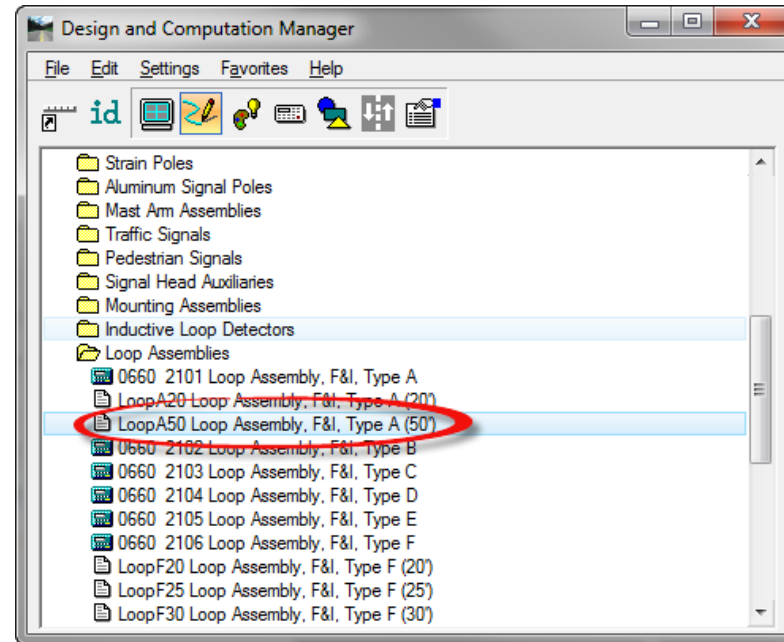
New Civil Cells

- “Curb & Gutter Maker” Civil Cell
 - Workflow to replace Curb and Gutter Maker tool.
 - FDOT_CurbGutterMaker.dgnlib
 - Youtube Help Video:
<https://www.youtube.com/watch?v=2lvDqn46F80&list=PLavISlrHb34FuJ-hqf-dvin3llpDZRtR5>



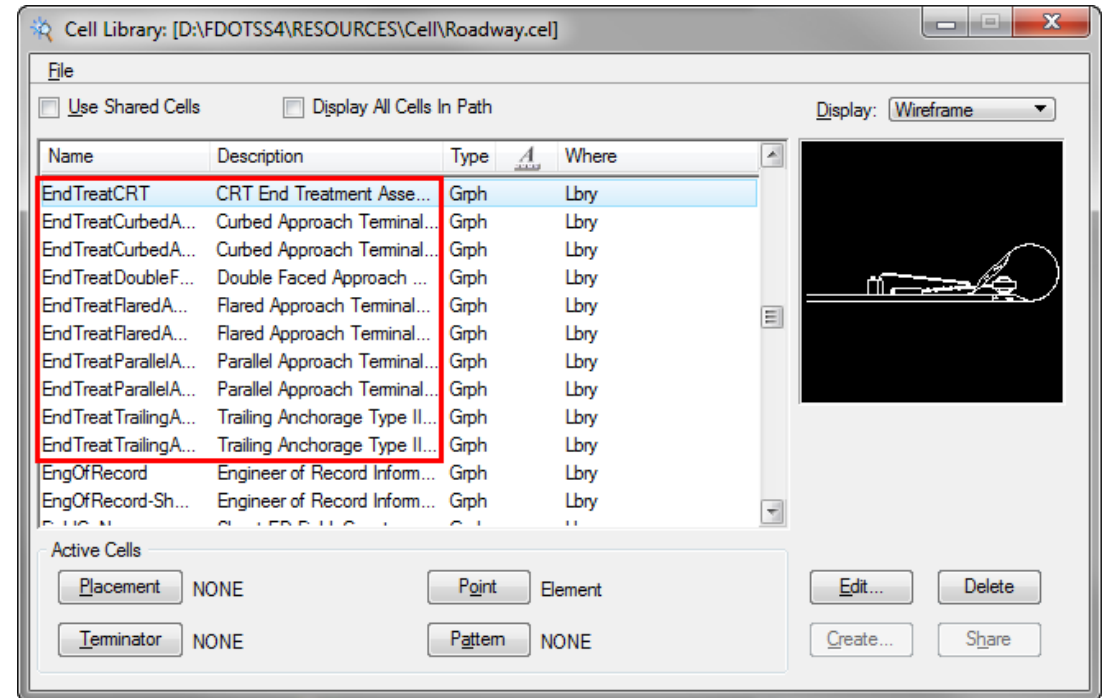
DDB and Pay Item Changes

- Permanent Pavement Markings
 - DDB item can now calculate paint and thermoplastic simultaneously from 1 MicroStation element.
- A 50' Type A Loop has been added for signals



DDB and Pay Item Changes

- New Guardrail Items
 - Guardrail End Anchorage standard has been changed.
 - End Anchorages will now be called End Treatments.
 - New cells have been created to reflect the changes.
 - Old cells are still available.
 - New standard will not take effect until 2017.
 - A bulletin with the new standard will be released by the end of this month.



- New Summary Boxes:
 - Traffic Monitoring Site

Select FDOT Template

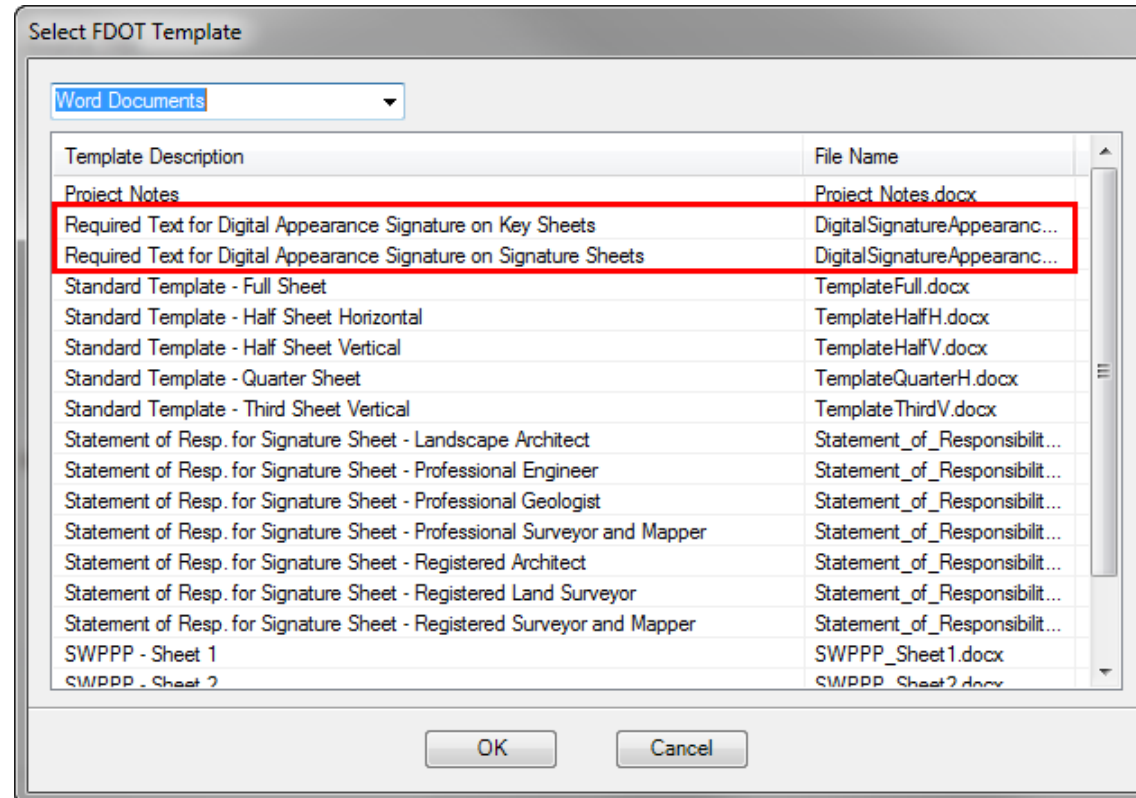
Computation Summary Boxes ▾

Template Description	File Name
Summary of Railing	Summary_of_Railing.xlsx
Summary of Removal Items	Summary_of_Removal_Ite...
Summary of Side Drain and MES	Summary_of_Side_Drain_a...
Summary of Side Drain and MES with Flowlines	Summary_of_Side_Drains_...
Summary of Sidewalk	Summary_of_Sidewalk.xlsx
Summary of Temporary Crash Cushions	Summary_of_Temporary_C...
Summary of Temporary Driveways	Summary_of_Temporary_D...
Summary of Temporary Signalization and Detection	Summary_of_Temporary_Si...
Summary of Traffic Control Plan Items	Summary_of_TCP.xlsx
Summary of Traffic Monitoring Site Items	Summary_of_Traffic_Monit...
Summary of Trench Drain	Summary_of_Trench_Drain...
Summary of Turf and Prepared Soil Layer	Summary_of_Turf_and_Pre...
Summary of Turnouts	Summary_of_Turnouts.xlsx
Summary of Underdrain	Summary_of_Underdrain.xlsx
Summary of Utility Adjustments - NOT for use with JPA with utilities	Summary_of_Utility_Adjust...
Summary of Walls	Summary_of_Walls.xlsx

OK Cancel

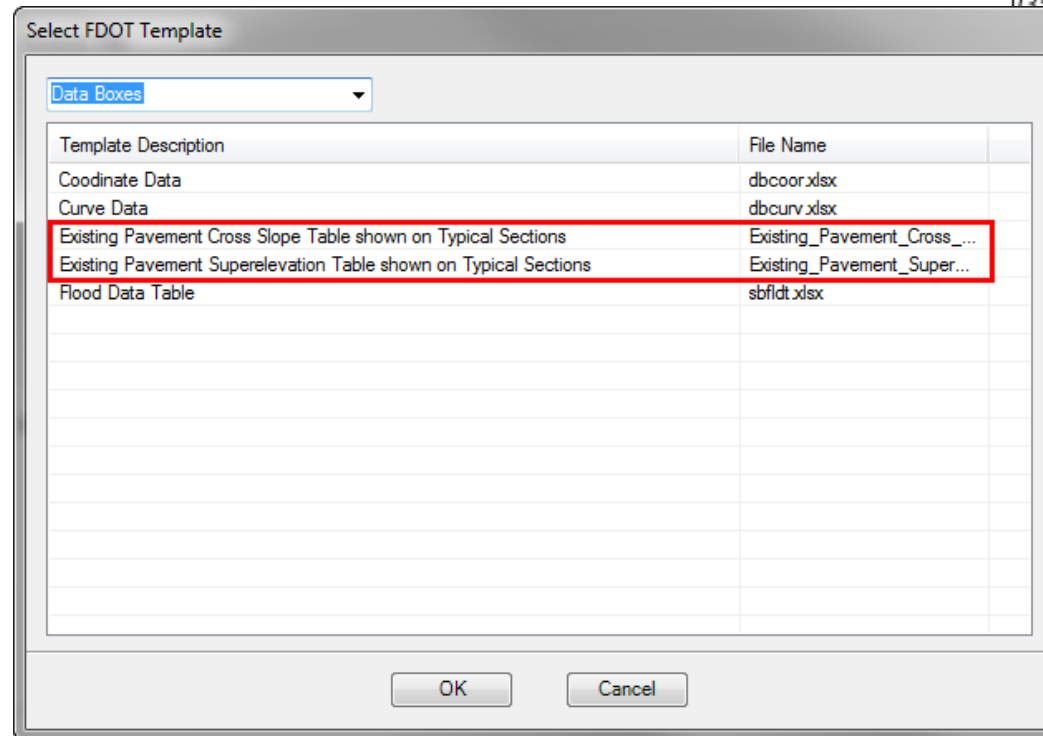
New LDM Tables and Documents

- New Word Documents:
 - 2 new documents for electronic signatures on keysheets and signature sheets.



New LDM Tables and Documents

- New Tables:
 - Existing Pavt. Cross Slope Table
 - Existing Pavt. Elevation Table



STA. 130+77.00 TO STA. 157+00.00

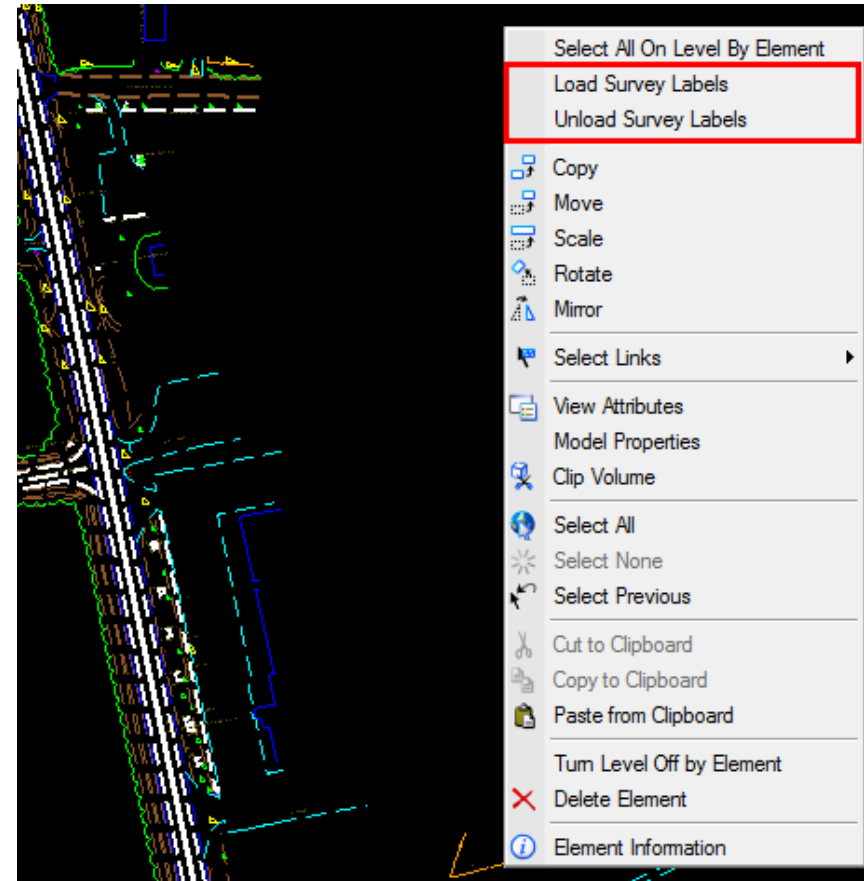
*EXISTING PAVEMENT CROSS SLOPES		
STATION	ROADWAY	
	LT	RT
131+00	0.014	0.014
132+00	0.014	0.014
133+00	0.013	0.013
134+00	0.013	0.012
135+00	0.013	0.013
00	0.013	0.013
00	0.012	0.013
00	0.012	0.013
00	0.013	0.014
00	0.012	0.013
00	0.013	0.011
00	0.014	0.011
00	0.015	0.011
00	0.015	0.011

*EXISTING PAVEMENT CROSS SLOPES		
STATION	ROADWAY	
	LT	RT
145+00	0.014	0.010
146+00	0.013	0.010
147+00	0.012	0.010
148+00	0.013	0.012
149+00	0.013	0.012
150+00	0.014	0.012
151+00	0.016	0.012
152+00	0.013	0.012
153+00	0.014	0.012
154+00	0.016	0.012
155+00	0.013	0.012
156+00	0.013	0.012
157+00	0.014	0.012

EXHIBIT TYP-8A
Date: 1/1/14
SHEET 2 OF 2

Survey Updates

- Survey Files now have right-click menus menus:
 - DREXRD
 - SURVRD, SURVRW
 - TOPORD, TOPORW
 - UTEXRD



Questions?

- Christiana Holmes:
 - Phone: 850-414-4884
 - Email: christiana.holmes@dot.state.fl.us
 - Support Email: ECSO.Support@dot.fl.us

