

FDOTSS4 Standard & CellApps Menus

Presented By: Denise Broom

CADD Support Specialist, Engineering/CADD Systems Office



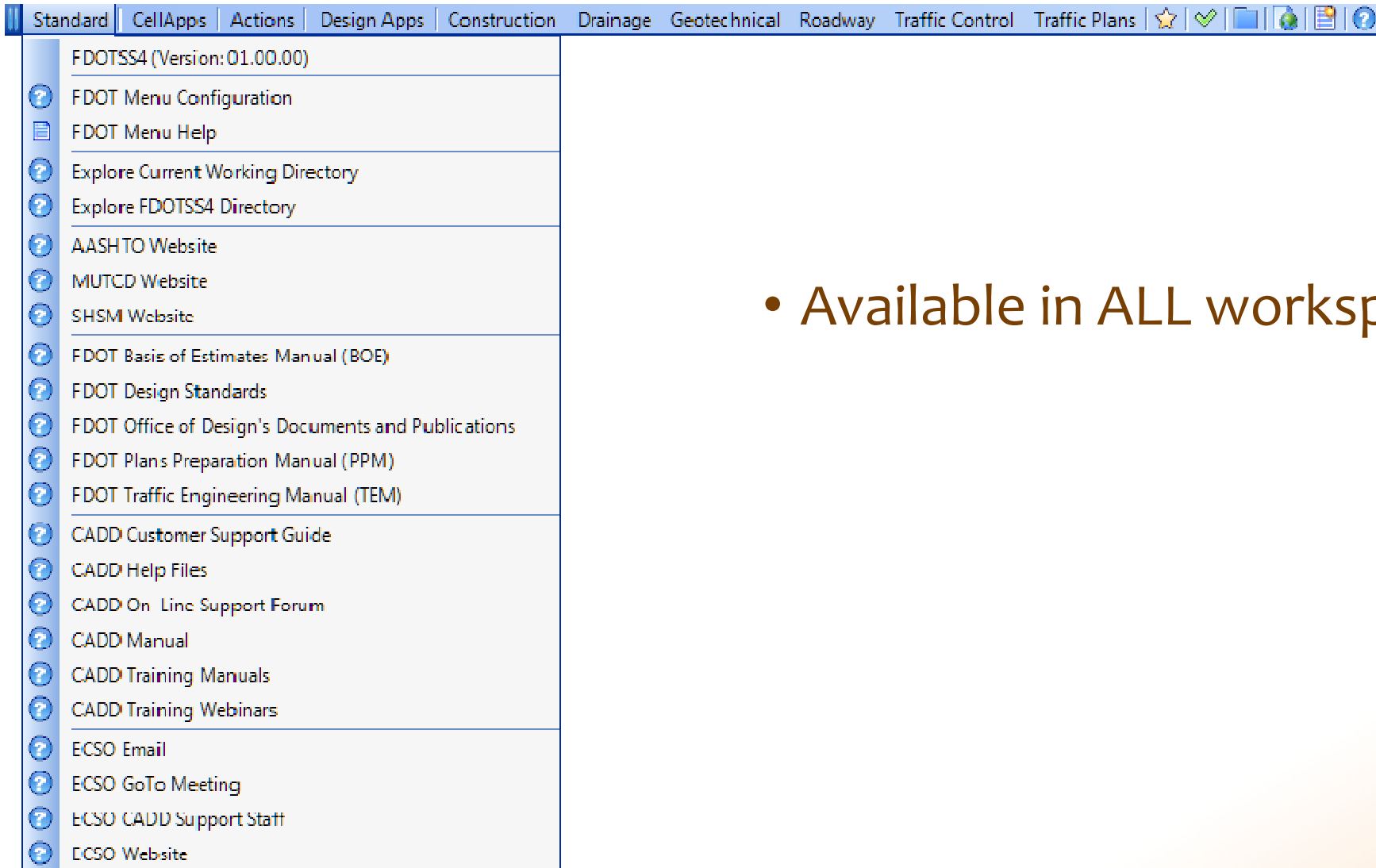
Objectives

- Explore the FDOT Standard and Cell Apps Menus
 - Valuable resources
 - Tools available to help save design time

Introduction

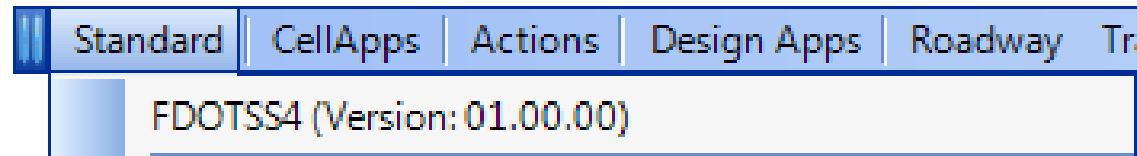
- Part 1 of 3 of a series of webinars go over the FDOT Menu. There are a variety of tools and resources made available to the designers to help in the CADD processes.

Standard Menu



- Available in ALL workspaces

Standard Menu - Information

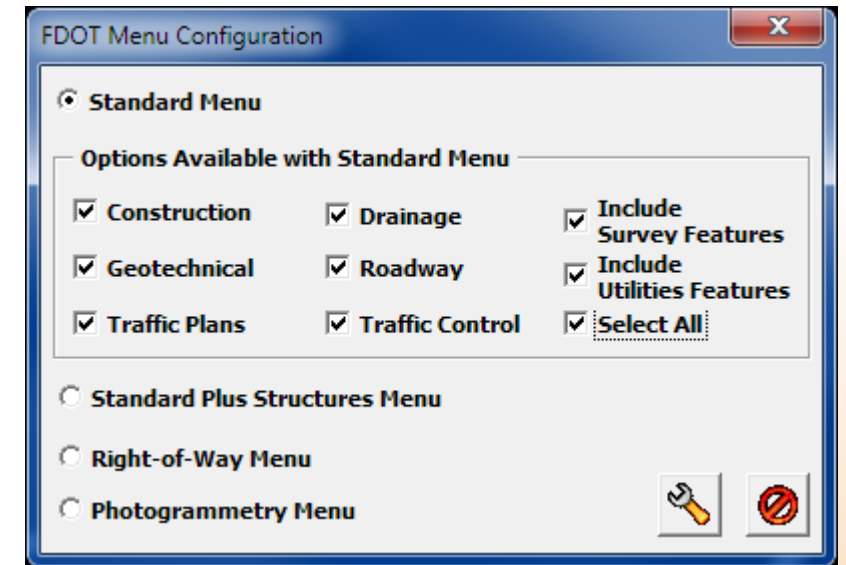


- FDOT Software Version Number

Standard Menu – FDOT Menu Configuration

FDOT Menu Configuration

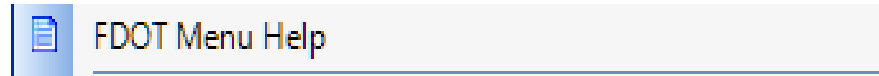
- Used to change the workspace and options available on the Menu.
 - Workspaces
 - Standard (often referred to as Roadway)
 - Structures
 - Right of Way
 - Photogrammetry
 - Standard and Structures Optional Menu Options
 - Also controls the attached resources
 - Cell libraries
 - Features
 - Levels/DGNLIB's



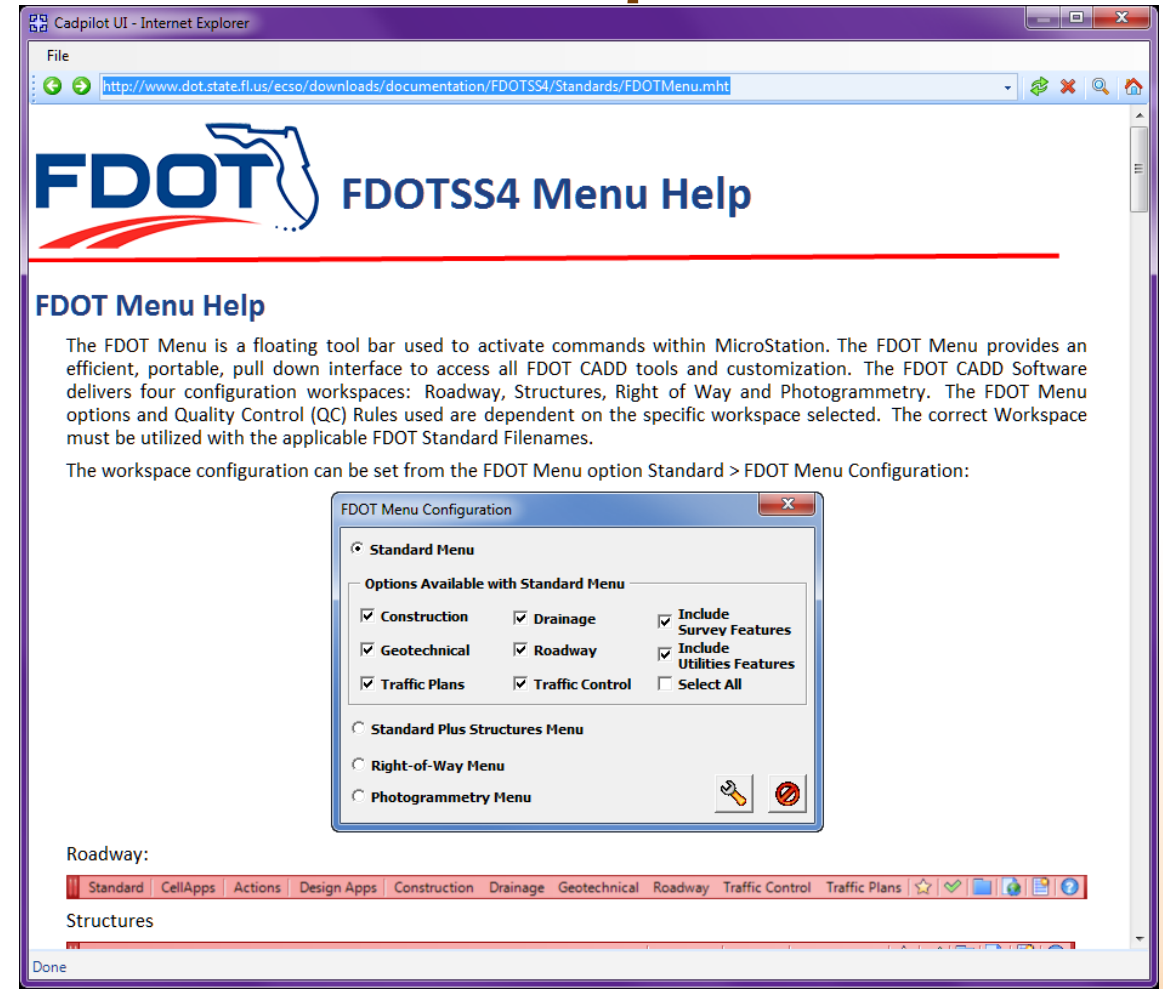
NOTE: MicroStation will not re-open correctly if you have MS Connect installed on your machine along side the currently supported software.



Standard Menu – FDOTSS4 Menu Help



- Opens the FDOTSS4 Menu Help Page
- Provides Information about the Menu as a whole, not a specific menu.
 - Configuration set up
 - Command buttons
 - Right click options
 - Tool tips
 - Help links



Standard Menu – Exploring Directories...

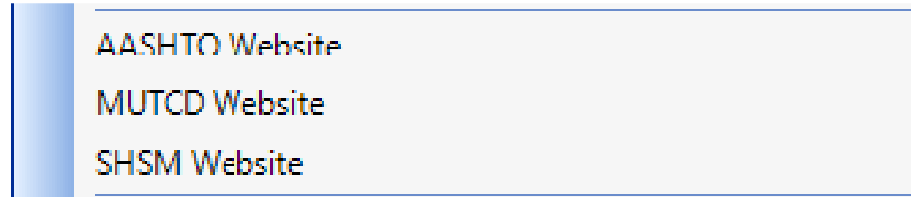
Explore Current Working Directory

Explore FDOTSS4 Directory

- Opens Explorer window to...
 - Current Working Directory
 - FDOT Directory
- Provides quick access to the file directories you need while working on a project.



Standard Menu – Website Links



- Quick links to resource websites
 - AASHTO
 - American Association of State Highway and Transportation Officials
 - MUTCD
 - Manual on Uniform Traffic Control Devices
 - SHSM
 - Standard Highway Signs and Markings



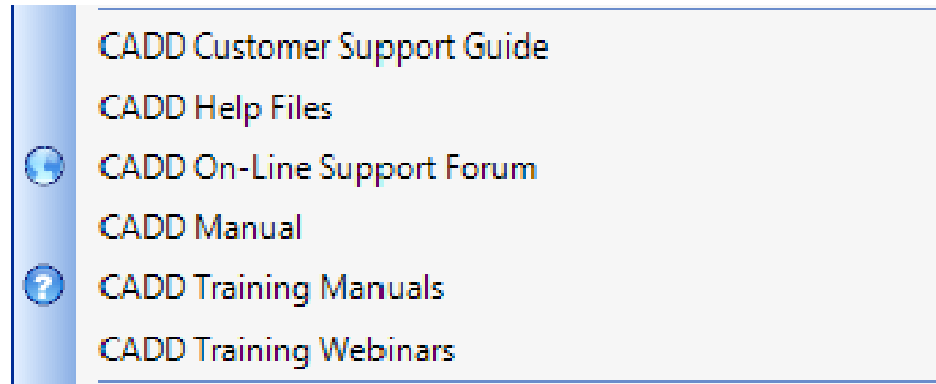
Standard Menu – FDOT Publication Resources

- ? FDOT Basis of Estimates Manual (BOE)
- ? FDOT Design Standards
- ? FDOT Office of Design's Documents and Publications
- ? FDOT Plans Preparation Manual (PPM)
- ? FDOT Traffic Engineering Manual (TEM)

- Quick links to FDOT resource websites



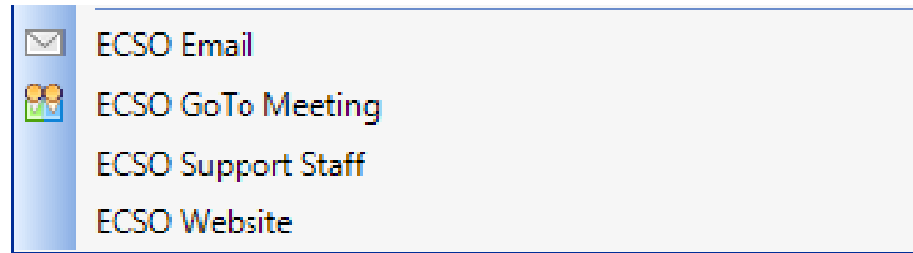
Standard Menu – CADD Support & Training Resources



- Quick links to ECSO/CADD resource websites
 - Customer Support Guide – Who should you contact?
 - Help Files – All of our files are now web based.
 - On-Line Support Forum – Support & Resources
 - Training Manuals
 - Training Webinars



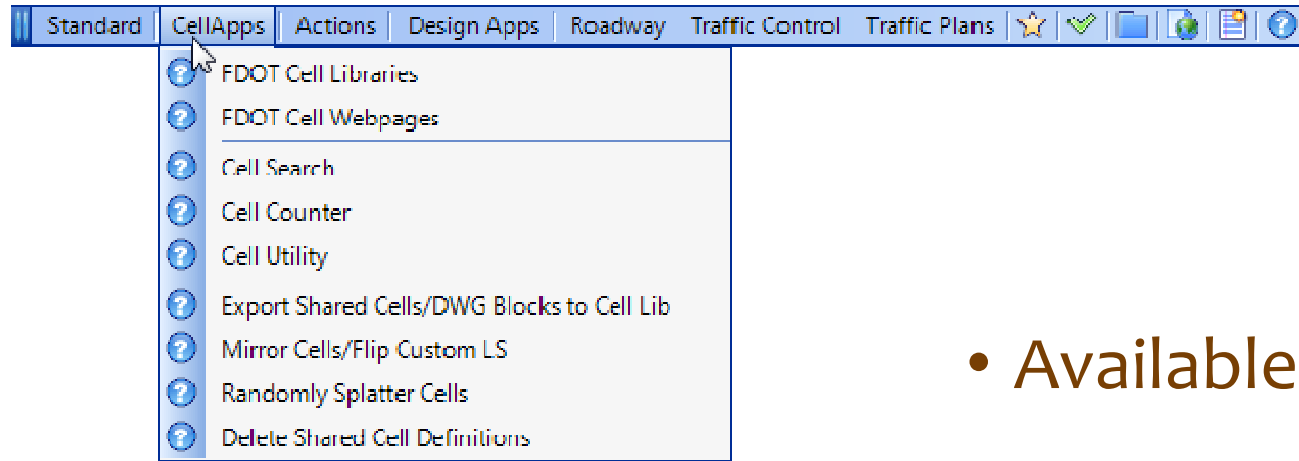
Standard Menu – ECSO Connection...



- E-mail – opens e-mail addressed to ECSO Support
- GoToMeeting – Opens sign in page for a GoToMeeting
- Support Staff – Application that lists all of the ECSO staff supporting MicroStation and what we support along with our contact information
- Website – Link to the ECSO homepage



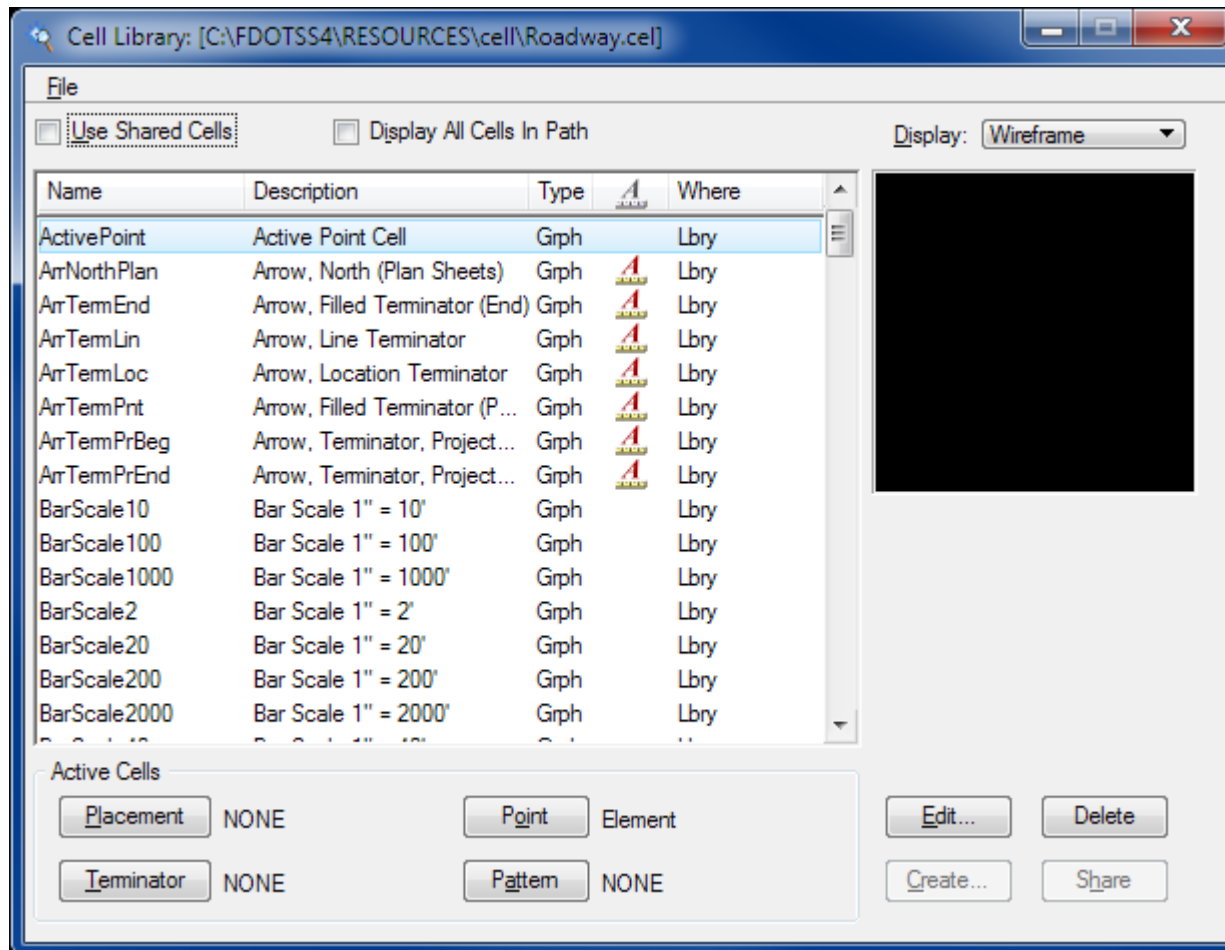
CellApps Menu



- Available in ALL workspaces

CellApps Menu – Cell Libraries


? FDOT Cell Libraries

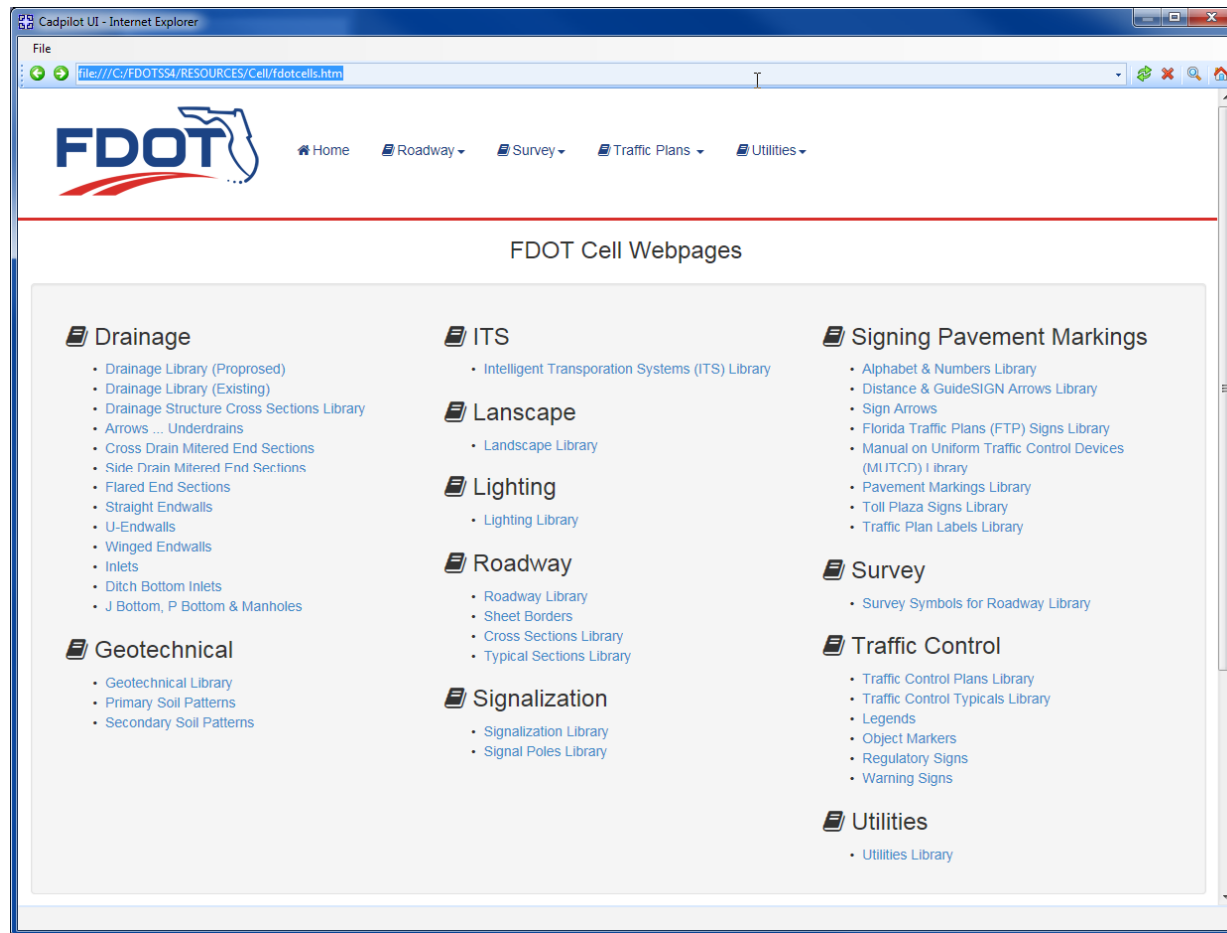


- Opens the Cell Library dialog box
 - Active Library will be attached



CellApps Menu – Cell Webpages

 FDOT Cell Webpages



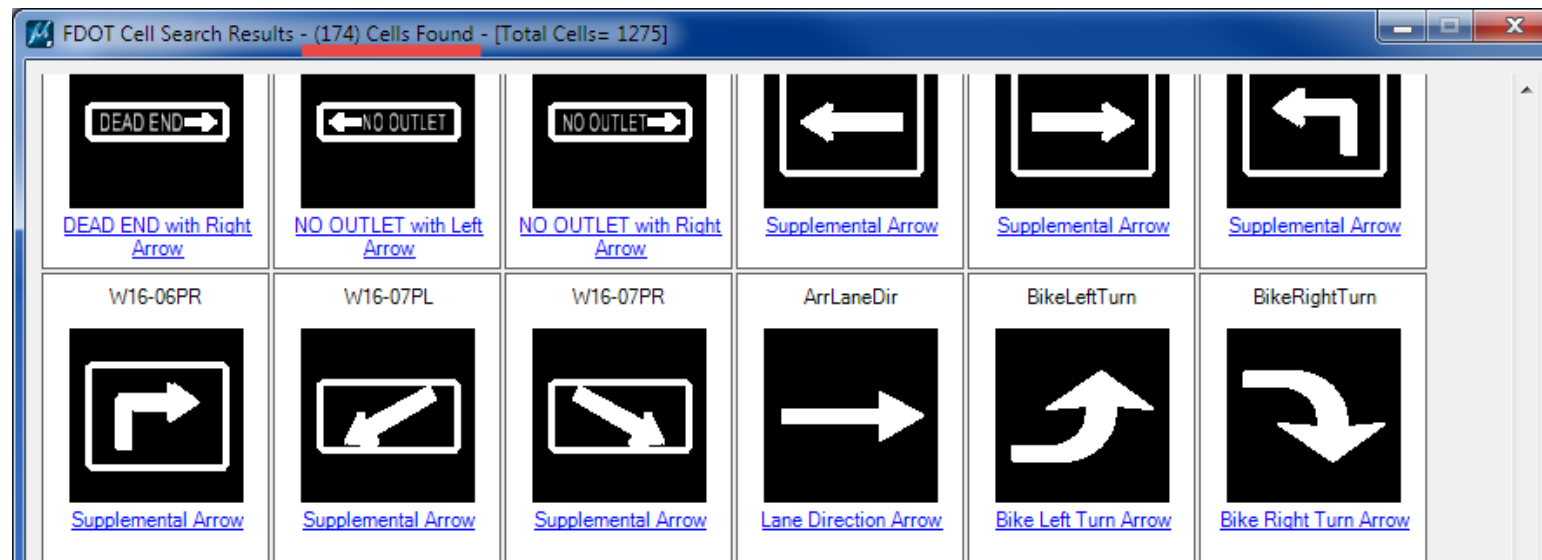
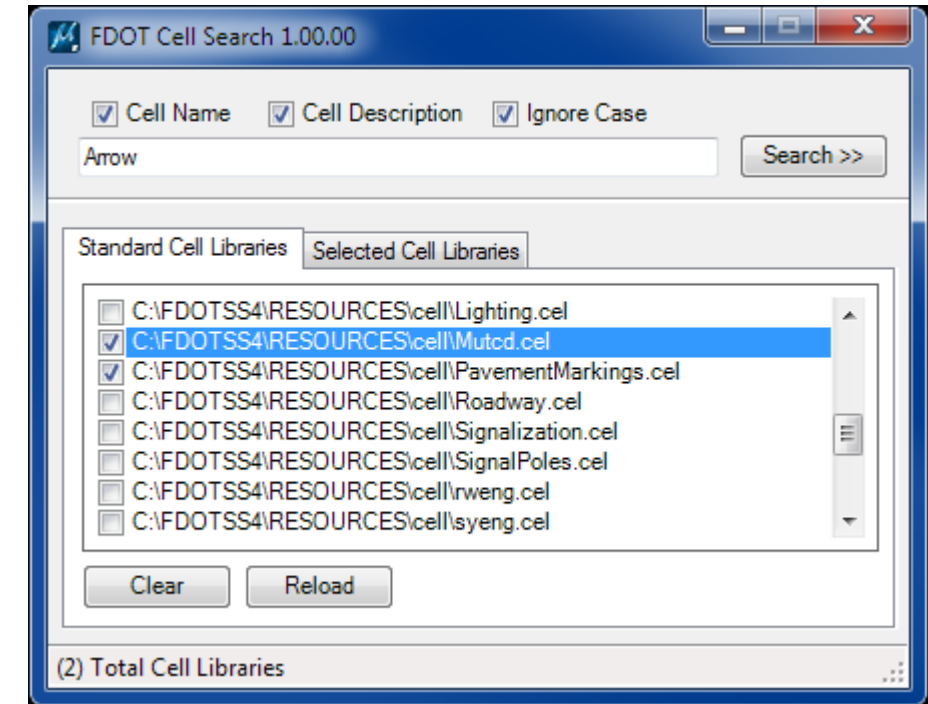
- Opens the FDOT Cell Webpages
 - These cells are **NOT** actually posted out on the internet. They are only available through our software.
- Customized groups of cells displayed with images for ease of access
 - New options under Traffic Control in FDOTSS4



CellApps Menu – Cell Utilities

- ? Cell Search
- ? Cell Counter
- ? Cell Utility

- FDOT Cell Search
 - Generates a graphical listing of cells based on search parameters from multiple cell libraries

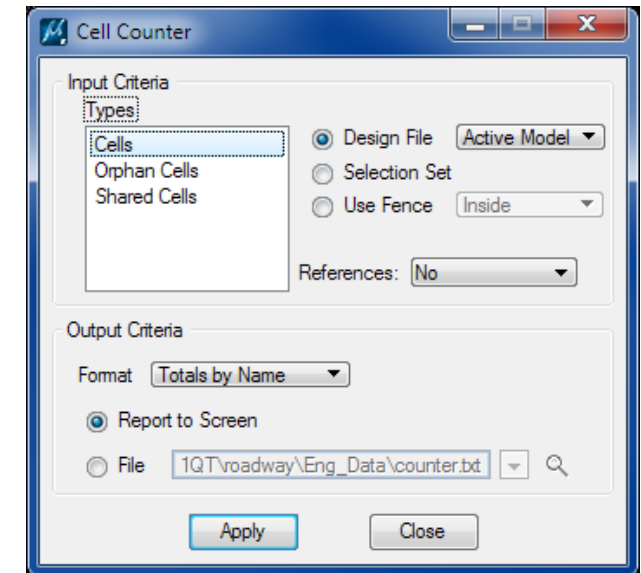


CellApps Menu – Cell Utilities

- ? Cell Search
- ? Cell Counter
- ? Cell Utility

• Cell Counter

- Generates a list of the cells in a design file
 - Name
 - Description
 - Count
- Can generate for:
 - Graphic Cells – Normal Cells each defined with a separate definition from a cell library
 - Orphan Cells – Groups of elements that can be manipulated as a cell but remain unnamed
 - Shared Cells – Uses one cell definition from a cell library
 - **DO NOT USE SHARED CELLS!!**

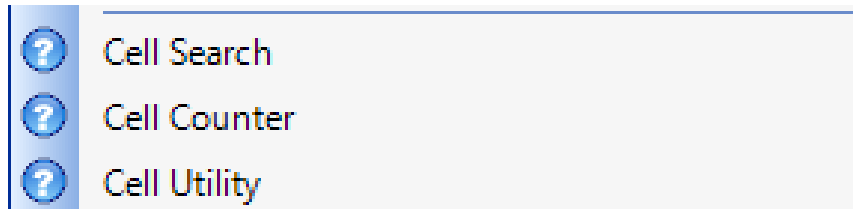


The View Report dialog box displays the following table:

Cell Name	Description	Count
IRC	Monument (Iron Rod and Cap)	273
PST	Monument (Wooden Post Stake Staub)	49
CMON	Monument (Cast Concrete)	94
HOLE	Empty Hole Test Hole	21
TREEOA	Tree (Oak)	49
SSS	Sign (Single Pole Support)	197
MBX	Mailbox	76
TREE	Tree (Unknown)	20
OM	Monument (Other Described)	67
NL	Monument (PK Nail, Spike Nail or Pin)	264
FLD	Flood Light	20
FP	Flag Pole	4
TA	Tum Arrow	13
SIL0	Silo	1
PIP	Monument (Metal Pipe, Rod, Bar or Axle)	17
TREEPI	Tree (Pine)	9
OP	Ornamental Plant (Shrub)	7
TREED	Tree (Deciduous)	6
SAT	Monument (Stake and Tac)	1
STM	Tree Stump	7
TREEPA	Tree (Palm)	7
GND	Ground Shot for DTM Densification	2
SHRD	Shrub (Deciduous)	3
STTK	Storage Tank	2
SHR	Shrub	2

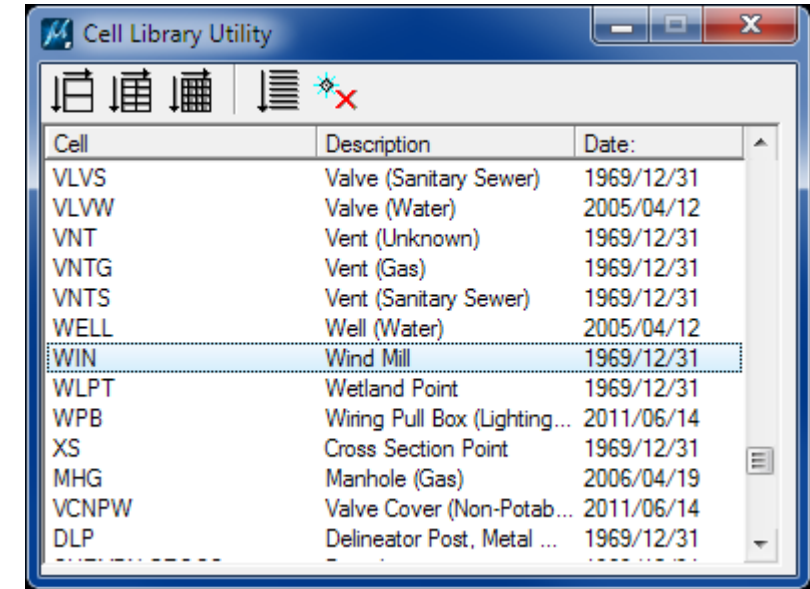
Buttons: Save As..., Close

CellApps Menu – Cell Utilities



- Cell Utility

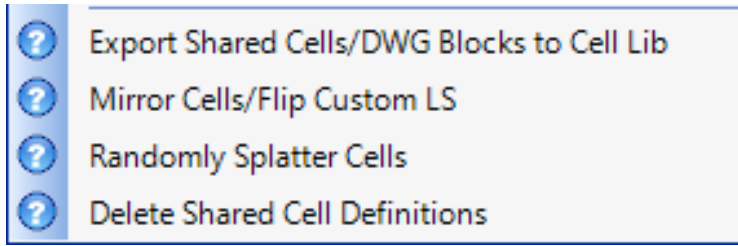
- Creates “sheets” displaying the selected cells from the active cell library
 - 1x2
 - 2x4
 - 4x8
- Creates a list of the cells and saves it to a *.lis file with the same information as shown in the dialog box for selected cells
- Deletes cells in the library

A screenshot of the Cell Library Utility dialog box. It features a table with three columns: Cell, Description, and Date. The 'WIN' row is selected.

Cell	Description	Date:
VLVS	Valve (Sanitary Sewer)	1969/12/31
VLVW	Valve (Water)	2005/04/12
VNT	Vent (Unknown)	1969/12/31
VNTG	Vent (Gas)	1969/12/31
VNTS	Vent (Sanitary Sewer)	1969/12/31
WELL	Well (Water)	2005/04/12
WIN	Wind Mill	1969/12/31
WLPT	Wetland Point	1969/12/31
WPB	Wiring Pull Box (Lighting...	2011/06/14
XS	Cross Section Point	1969/12/31
MHG	Manhole (Gas)	2006/04/19
VCNPW	Valve Cover (Non-Potab...	2011/06/14
DLP	Delineator Post, Metal ...	1969/12/31



CellApps Menu – Cell Manipulation Tools



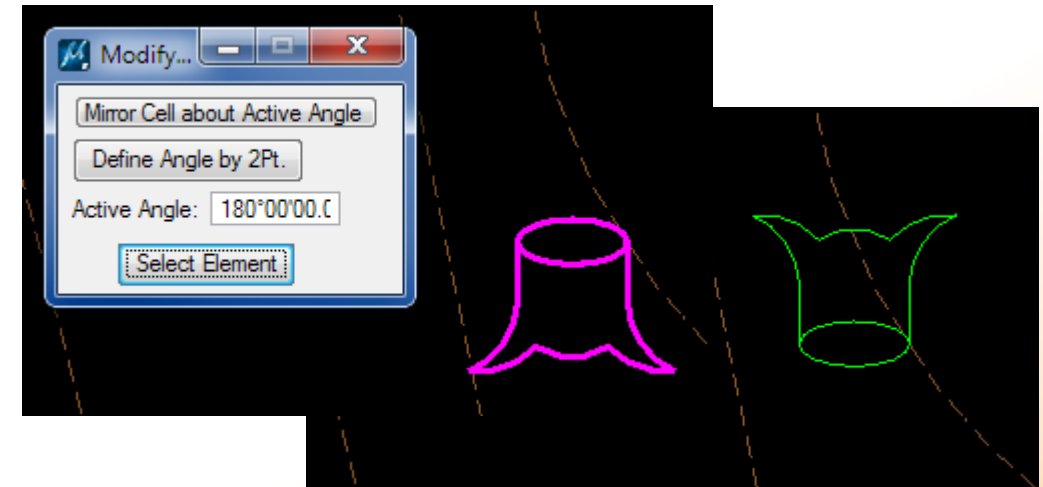
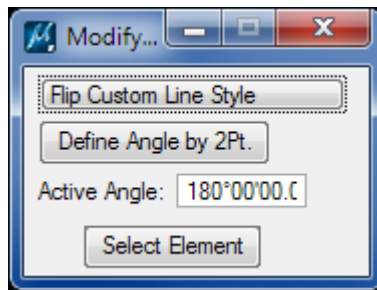
- Export Shared Cells/DWG Blocks to Cell Lib
 - Saves Shared Cells or Blocks from DWG file and saves them to a MicroStation cell library
 - File saved as celllib.cel in the active working directory

CellApps Menu – Cell Manipulation Tools

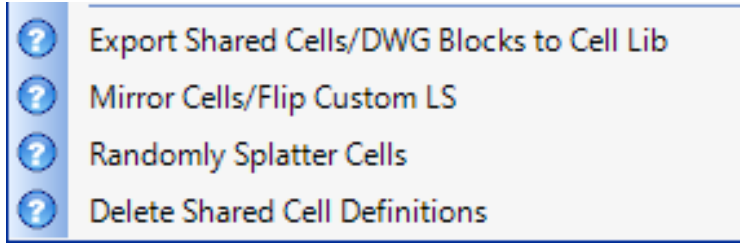
- ? Export Shared Cells/DWG Blocks to Cell Lib
- ? Mirror Cells/Flip Custom LS
- ? Randomly Splatter Cells
- ? Delete Shared Cell Definitions

- Mirror Cells/Flip Custom LS

- Modify too that can be used to mirror cells around an Active Angle – or –
- Flip a Custom Line Style

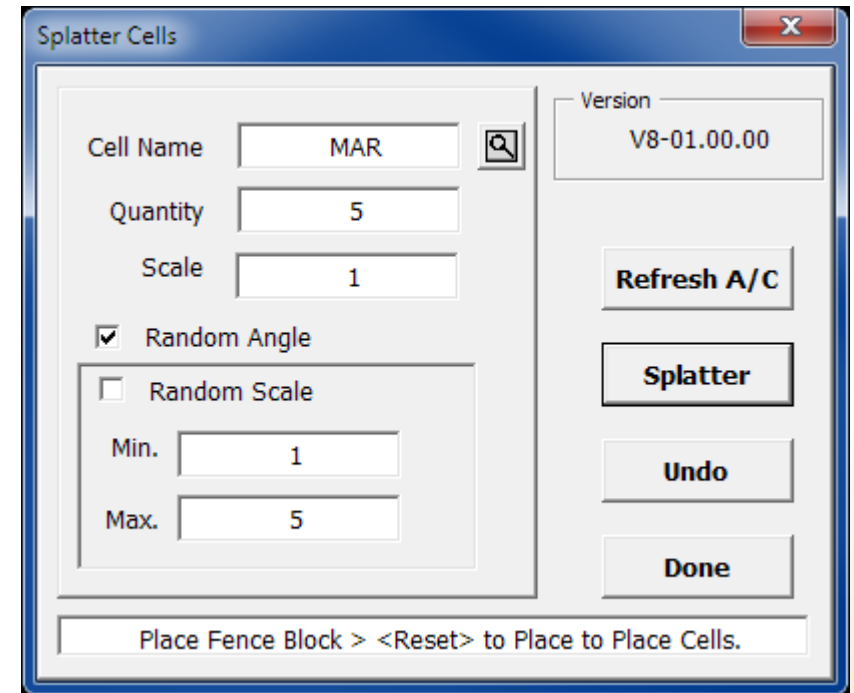


CellApps Menu – Cell Manipulation Tools

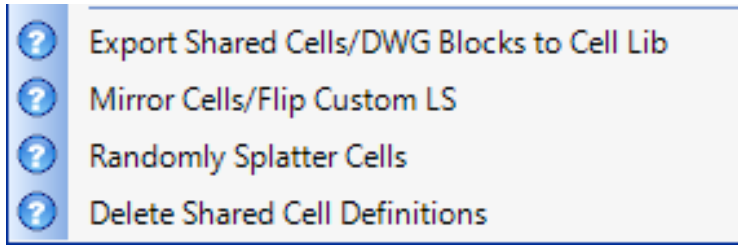


- **Splatter Cells**

- Tool randomly places cells within an area defined by the designer
 - Set up dialog with Cell, Quantity, Scale and define if Random Angle or Scale should be used
 - Click Splatter
 - Define a Fence area and then Right-click to place cells
 - Recommend using the shape or element mode to create the fence
 - Click Undo to remove the splatter cells just created
 - Done exits the tool

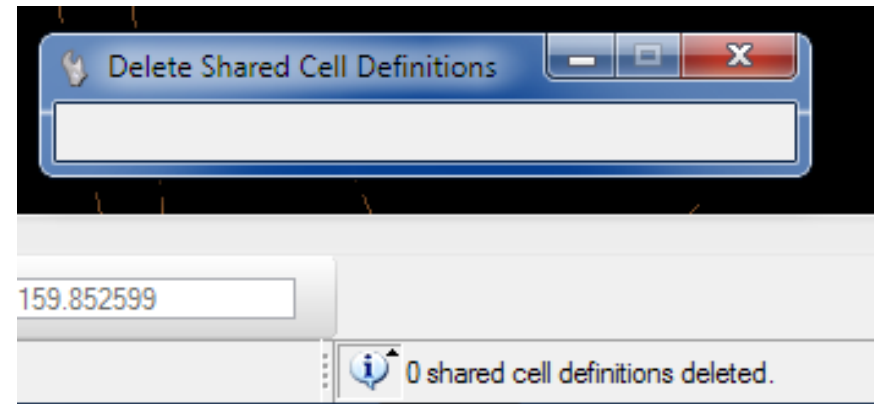


CellApps Menu – Cell Manipulation Tools



- Delete Shared Cell Definitions

- Automatically deletes any shared cell definitions in the file when activated
- Empty dialog will pop up and the number of definitions deleted will come up in the Message Center



Thank you...

Need some HELP? Contact me...

(850) 414-4751

E-mail: Denise.Broom@dot.state.fl.us

OR: ecso.support@dot.state.fl.us

<http://www.dot.state.fl.us/ecso>

FDOT CADD Support Forum On-line

http://communities.bentley.com/communities/user_communities/fdot_cadd_support/default.aspx