

Temporary Traffic Control Plan Resource Changes

Presented By: Denise Broom

CADD Support Specialist, Engineering/CADD Systems Office



Objectives








- Learn what changes have been made to the Temporary Traffic Control Resources in FDOTSS4.
 - Background...
 - Resource Changes
- Review FDOT Traffic Control Menu
- Answer questions

Background

- No longer using Lights and Flags in the TTC Plans.
- Contract Plans should NOT show proprietary products.
 - We are not to show Cones, Drums, and Type I or II Barricades in Plan view.
 - Typical Section view cells have been used in Plan view.
 - I.e. Type III Barricades
- Inconsistency with cell library and Design Standard Indexes
 - Note: We are still working on the Index cells.

SYMBOLS

The symbols shown are found in the FDOT site menu under Traffic Control cell library on the CADD system. Symbols assigned to the 600 series Design Standards and applicable to traffic control plans, unless otherwise identified in the plans, are as follows:

	Work Area, Hazard Or Work Phase (Any pattern within a boundary)
	Channelizing Device
	Pedestrian Longitudinal Channelizing Device (LCD)
	Type III Barricade
	Work Zone Sign
	Flagger
	Automated Flagger Assistance Device (AFAD)

Resource Changes

- Levels
- Custom Line Styles
- Cells / Cell Library
- Cell Web Pages
- D&C Manager

Resource Changes

- Levels

- **Retired**

- Barricade
- Barricade1(2,3,4)
- Cone
- Drum
- Flag
- FlashingLight
- TCZMisc
- TCZSign
- TCZSign1(2,3)

- **New (Plan View)**

- AdvWarnVehicle
- BarricadeIII
- ChannelDev
- Flagman
- SignalWorkZone
- SignWorkZone
- TrafficControlMisc

- **New (Typical/XS View)**

- Barricade_px
- BarricadeIII_px
- ChannelDevPed_px
- Cone_px
- Drum_px
- TubularMarker_px
- WallTempBarrier_px

Resource Changes

- Custom Line Styles

- Retired ALL of the custom line styles except...

- MOT-Attenuator
- MOT-ChannelDevPed



- Why?

- Uses Proprietary Device Symbols
- D&C counts cells placed X Days
 - Not set up with a formula to determine number from the linear elements
 - (And no, not changing it... Try placing with the Draw Cell by Feature tools...)

Resource Changes

- Cells
 - Removed Proprietary Plan View & Legend Cells
 - Cones, Drums, etc.
 - Removed Lights and Flags
 - Plan View Cells
 - Legend Cells
 - From Index Cells
 - Updated cell for Index 660 (Peds)
 - Updated All cells with new levels
 - Renamed some cells
 - Renamed the TCZ numbered cells
 - A few renamed for consistency
- Cell Library (TrafficControl.cel)
 - Split into 2 cell libraries
 - TrafficControlPlans.cel
 - Contains Index cells & Plan View cells
 - TrafficControlTypicals.cel
 - Contains Typical & Typical/XS View cell for channelizing devices and walls

Resource Changes

- Cell Web Pages
 - Reorganized for easier access to the cells you need...

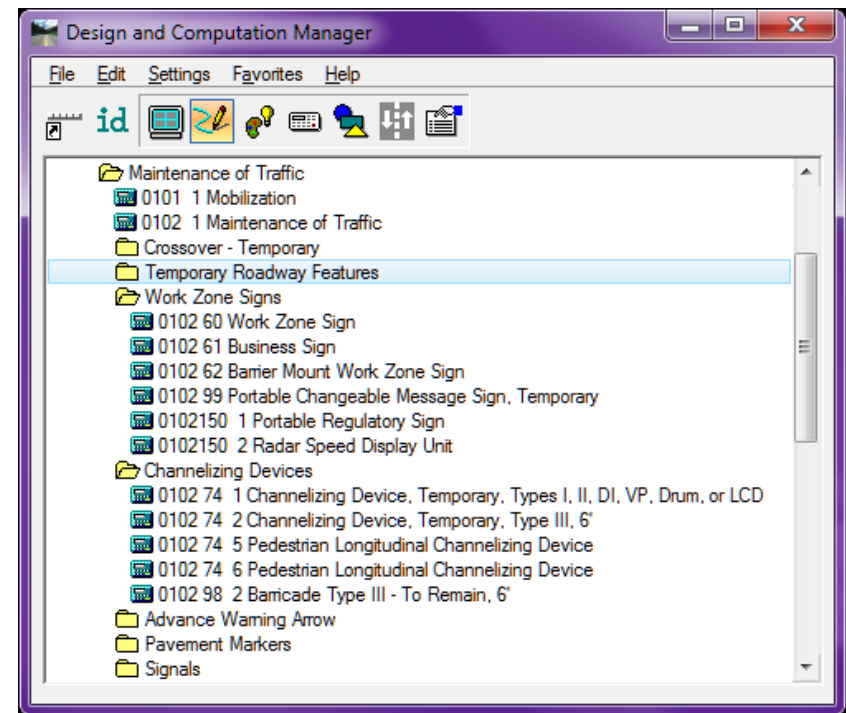
Traffic Control

- Traffic Control Plans Library
- Traffic Control Typical Library
- Legends
- Object Markers
- Regulatory Signs
- Warning Signs

- Pulls from the Traffic Control cell libraries as well as the MUTCD cell library

Resource Changes

- D&C Manager
 - Removed options for Channelizing Devices (102-74-1)
 - Added Pay Items
 - Portable Regulatory Sign (102-150-1)
 - Radar Speed Display Unit (102-150-2)
 - Pedestrian LCD (ED) (102-74-6)
 - Replacing 102-74-5 (LF) effective Jan 2016
 - Removed the Category for Lights
 - Renamed and Moved the VMS sign to the Work Zone Signs Category as Portable Changeable Message Sign (102-99)



FDOT Traffic Control Menu

- Review

Thank you...

Need some HELP? Contact me...

(850) 414-4751

E-mail: Denise.Broom@dot.state.fl.us

OR: ecso.support@dot.state.fl.us

<http://www.dot.state.fl.us/ecso>

FDOT CADD Support Forum On-line

http://communities.bentley.com/communities/user_communities/fdot_cadd_support/default.aspx