



# Change Management Board Meeting



# Welcome and Introductions

**Steve Corbin, CMB Chairman**



# Change Management Board



Time	Item	Lead	Supporting Materials	
8:30 – 8:35	Welcome and Introductions	Corbin		
8:35 – 8:50	Previous Meeting Recap and Action Item Review	Corbin	March 8, 2007 Meeting Notes	
8:50 – 9:10	CMB Process Update	Corbin	CMB Process	
9:10 – 9:40	SunGuide <sup>SM</sup> Footprints Issues Review	Heller	CMB .ppt	
9:40 – 10:00	SunGuide <sup>SM</sup> Software Release 3.1	Travel Time Subsystem Requirements ( <i>Vote</i> )	Bonds	March 8, 2007 Meeting Notes Action Item 11 Additional Requirements.doc
10:00 – 10:15	<b>BREAK</b>			
10:15 – 11:00	SunGuide <sup>SM</sup> Software Release 3.x	FHP CAD Interface	Tillander	Draft Concept of Operations
		AMBER Alert	Glotzbach	Draft Concept of Operations
11:00 – 11:20	Using SunGuide <sup>SM</sup> in Multiple TMCs Currently	Corbin	Draft Concept of Operations	
11:20 – 11:30	Closing and Action Item Review	Corbin		



# Change Management Board



## Previous Meeting Recap and Action Item Review

Steve Corbin



# Change Management Board



## Action Items – 1/3

1. Trey will follow up with the FDOT Legal Office on the required duration of archiving of data.
2. District 4 will send out the CitiLog offer letter to other Districts for review.
3. David Chang will send out the original CMB charter to Districts for review.
4. The Central Office will set up a teleconference with District 4 to go over comments prior to the next CMB meeting.
5. SwRI GUI screen snapshot – research name of the Set log level.
6. James Bitting will send out the OIS procedure for security access and the password requirements and duration.



# Change Management Board



## Action Items - 2/3

7. CAD interface ConOps will be distributed by Trey before next CMB in April.
8. Gene will send out Amber Alert ConOps/functional requirements before next CMB in April.
9. Jesus will provide the final report on cell phone travel time from FIU
10. Gene will provide a final report on portable roadside readers to CMB.
11. John Bonds and Trey to come up with the three new travel time requirements to handle the travel time calculation with probes and detectors in the same TSS link.
12. Robert Heller will provide research on the data logger to make it more user friendly.



# Change Management Board



## Action Items – 3/3

- 13.** Trey will send out Release 2.2.2 and its documentation, including the Software Users' Manual and Version Description Document.
- 14.** Steve Corbin will provide CMB with the travel arrangement for Release 3 activities, including FAT at San Antonio and design review meetings.
- 15.** Peter will provide CMB with information for the FUSION meeting and the SunGuide Users' Group meeting.
- 16.** Steve Corbin will provide Gene with the Google Map Contacts and cost information.
- 17.** Ron Meyer will install SunGuide Release 2.2.2 at TERL and will support District 2 on their installation.



# Change Management Board



## CMB Process Update

Steve Corbin





# Change Management Board



## SunGuide<sup>SM</sup> Software Footprints Issues Review

Robert Heller



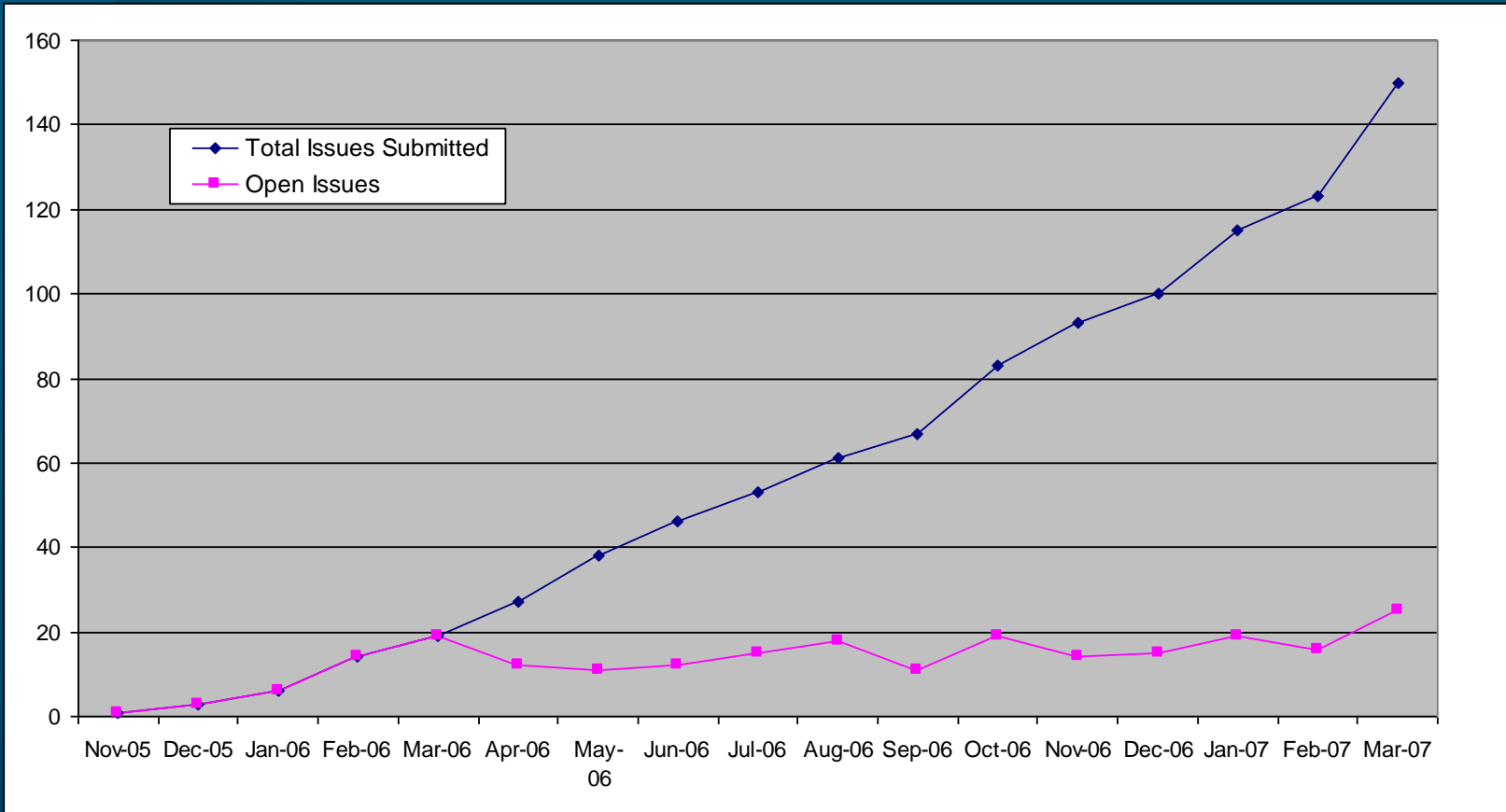
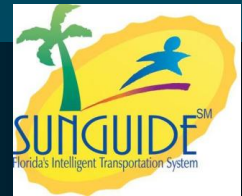
# Footprints Issues Status



	<b>New</b>	<b>Open</b>	<b>Closed</b>	<b>Public Solution</b>	<b>Total</b>
Mar 29, 07	26	25	125	2	150
Feb 28, 07	19	16	106	2	124
Jan 9, 07	11	15	89	1	105
Dec 1, 06		14	79	1	94



# Open / Total Issues





# All Open Issues



Issue Number	Date Submitted	Status	Last Edit Date	Title
<a href="#">51</a>	6/6/2006	Needs FDOT Approval	11/27/2006	TVT messages with multiple destinations but missing data
<a href="#">65</a>	8/22/2006	SwRI Reviewing	11/27/2006	CCTV Gui not correctly showing status of camera lock
<a href="#">97</a>	11/16/2006	More Information Requested	3/13/2007	Preferences lost
<a href="#">101</a>	11/30/2006	More Information Requested	12/12/2006	Detectors reporting 0-0-0 for both no vehicles (empty roadway), and stopped vehicles (congestion)
<a href="#">102</a>	11/30/2006	SwRI Reviewing	12/11/2006	Allow 'failed' devices to still periodically poll
<a href="#">107</a>	12/22/2006	More Information Requested	3/7/2007	MCP / Joystick issue
<a href="#">110</a>	1/3/2007	SwRI Reviewing	3/6/2007	MAS subsystem locks up
<a href="#">116</a>	1/18/2007	SwRI Reviewing	1/22/2007	Improvement to Admin Editor device pages
<a href="#">120</a>	1/26/2007	More Information Requested	2/19/2007	TSS Status Incorrect
<a href="#">125</a>	2/6/2007	More Information Requested	2/19/2007	Average Travel Speeds (ATS) not being recorded
<a href="#">134</a>	3/1/2007	SwRI Reviewing	3/1/2007	Ability to convert NonTSS link to TSS link
<a href="#">138</a>	3/5/2007	More Information Requested	3/6/2007	RWIS module not working with ZENO RWIS stations
<a href="#">142</a>	3/9/2007	More Information Requested	3/28/2007	Default DMS Message Duration Problem
<a href="#">143</a>	3/15/2007	SwRI Reviewing	3/22/2007	Service restart required when device IP addresses modified
<a href="#">145</a>	3/16/2007	More Information Requested	3/23/2007	Release 2.2.2 Installation Cautions
<a href="#">147</a>	3/16/2007	More Information Requested	3/20/2007	JScript error on 2.2.2 map
<a href="#">148</a>	3/20/2007	SwRI Reviewing	3/20/2007	Data Archive / TSS logs have inconsistent timestamps
<a href="#">149</a>	3/20/2007	SwRI Reviewing	3/20/2007	Data Archive TSS logs include first few polls of next day
<a href="#">151</a>	3/20/2007	SwRI Reviewing	3/20/2007	Video Wall Subsystem not starting after installing Release 2.2.2
<a href="#">153</a>	3/20/2007	SwRI Addressing	3/23/2007	Video Switching is sometimes delayed
<a href="#">154</a>	3/21/2007	More Information Requested	3/22/2007	Detector and Lane status are inconsistent
<a href="#">156</a>	3/22/2007	More Information Requested	3/27/2007	+TSS detector not displaying data in sunguide
<a href="#">157</a>	03/22/2007	Issue Submitted	03/26/2007	Lat & Long for SunGuide in Admin Editor
<a href="#">158</a>	03/22/2007	SwRI Reviewing	03/26/2007	Executive handler Failure
<a href="#">160</a>	03/28/2007	SwRI Reviewing	03/28/2007	D9 Ramp Metering subsystem will not start



# Footprints #145

## R 2.2.2 Installation Cautions



- Release 2.2.2 performed by TMC staff, not SwRI staff
- Release 2.2.2 installation Footprints issues moved to 145
  - Issued copied to 145
  - Other issues closed
- TERL (Ron Meyer) produced good set of detailed notes that were added
- Emails were sent on periodic basis to district “POCs”
- Improvement to VDD based on
  - Footprints issues
  - D4 detailed comments



# Questions?



# Change Management Board



## SunGuide<sup>SM</sup> Software Release 3.1 Travel Time Subsystem Requirements

John Bonds



# Change Management Board



- **March 8, 2007 CMB videoconference action item:**
  - *11. John Bonds and Trey to come up with the three new travel time requirements to handle the travel time calculation with probes and detectors in the same TSS link.*
- **The 3 new requirements are:**
  - **TM013T** SunGuide shall be able to create multiple travel time links from different data sources on the same roadway segment.
  - **TM013T1** A travel time link shall be allowed to contain TSS links of varied types (i.e., AVL, LPR, roadway sensors)
  - **TM013T2** SunGuide shall be able to display on the SunGuide GUI, for comparison purposes, the multiple Travel Times for each roadway segment if different data sources are used to calculate it and indicate what data source was used to calculate the travel time.





# Change Management Board



- *The following requirement is modified:*

## **REPLACE**

- *“TM005G The SunGuide GUI shall enable viewing of current travel times and speeds for different segments in a tabular format.”*

## **WITH**

- *“TM005G The SunGuide GUI shall enable viewing of current travel times for different segments in a tabular format.”*

*The speed portion of this requirement is already handled through existing TSS and the map color-coded links.*

- *The following requirement is deleted:*

## **DELETE**

- *TM001G1 SunGuide shall enable viewing of current travel times for different segments in a tabular format DMS module.*

*This requirement is redundant with TS005G.link.*



# Probe TT Data Collection Requirements



- TM013T** SunGuide shall be able to create multiple travel time links from different data sources on the same roadway segment.
- TM013T1** A travel time link shall be allowed to contain TSS links of varied types (i.e., AVL, LPR, roadway Sensor Types)
- TM013T2** SunGuide shall be able to display on the SunGuide GUI, for comparison purposes, the multiple Travel Times for each roadway segment if different data sources are used to calculate it and indicate what data source was used to calculate the travel time.

## CMB Vote

Y / N
Y / N
Y / N



# Probe TT Data Collection Requirements

- **Additional Cost:**
  - \$19,418
- **Total TvT Cost:**
  - **\$407,245**
    - \$387,827 (03/08/2007 CMB Approved)
    - \$19,418 (Additional Cost for new requirements)



# Questions?



# Change Management Board



Time	Item	Lead	Supporting Materials	
8:30 – 8:35	Welcome and Introductions	Corbin		
8:35 – 8:50	Previous Meeting Recap and Action Item Review	Corbin	March 8, 2007 Meeting Notes	
8:50 – 9:10	CMB Process Update	Corbin	CMB Process	
9:10 – 9:40	SunGuide <sup>SM</sup> Footprints Issues Review	Heller	CMB .ppt	
9:40 – 10:00	SunGuide <sup>SM</sup> Software Release 3.1	Bonds	March 8, 2007 Meeting Notes Action Item 11 Additional Requirements.doc	
<b>10:00 – 10:15</b>	<b>BREAK</b>			
10:15 – 11:00	SunGuide <sup>SM</sup> Software Release 3.x	FHP CAD Interface	Tillander	Draft Concept of Operations
		AMBER Alert	Glotzbach	Draft Concept of Operations
11:00 – 11:20	Using SunGuide <sup>SM</sup> in Multiple TMCs Currently	Corbin	Draft Concept of Operations	
11:20 – 11:30	Closing and Action Item Review	Corbin		



# Change Management Board



## FHP CAD Interface

Trey Tillander



# FHP CAD - ConOps



## Concept of Operations



## Florida Department of Transportation

## Florida Highway Patrol Computer-aided Dispatch Data in SunGuide<sup>SM</sup> Software

March 28, 2007  
Draft Version 1.1



Prepared for:

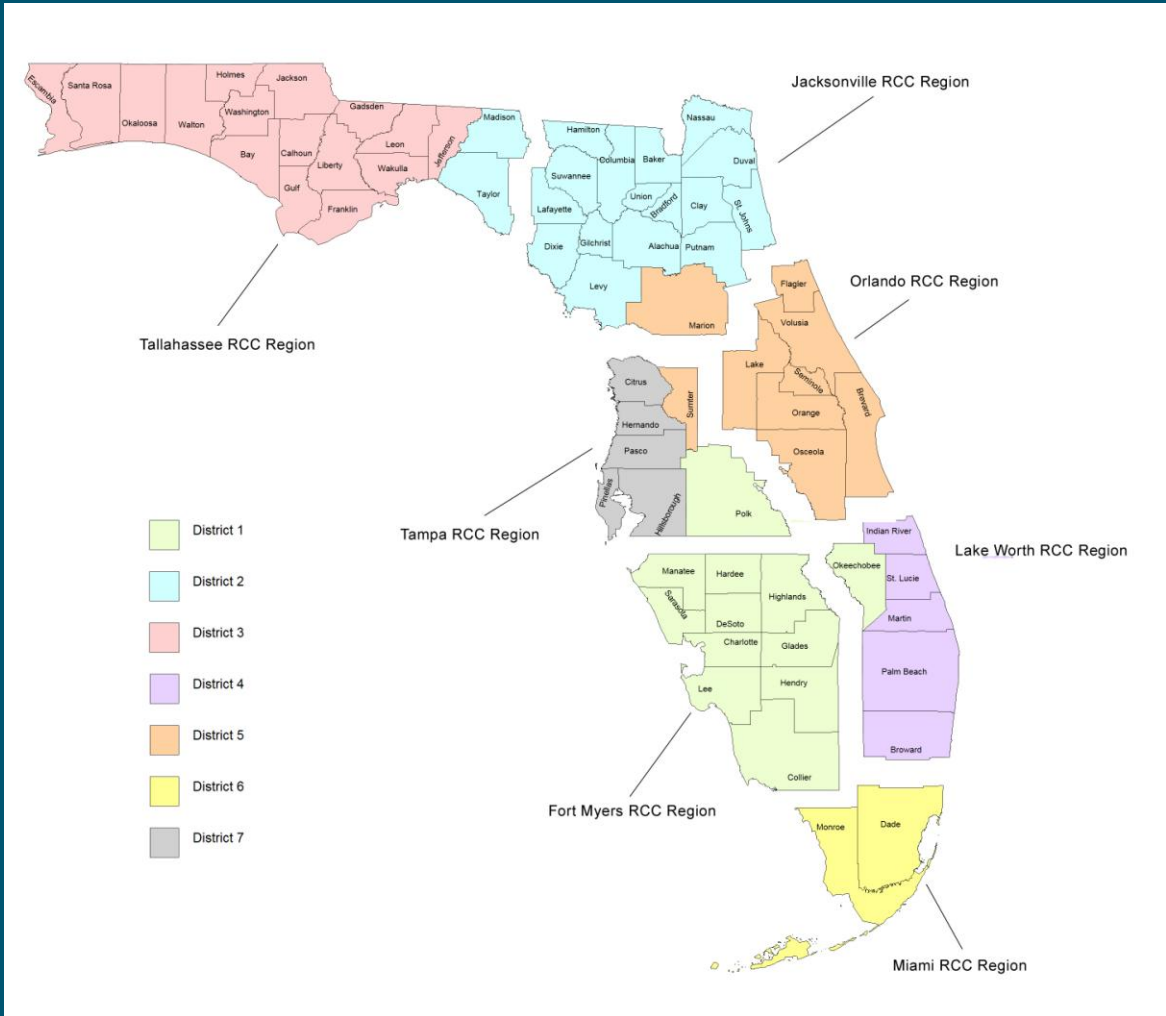
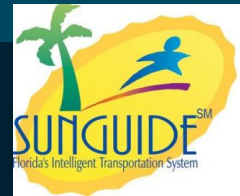
Florida Department of Transportation  
Traffic Engineering and Operations Office  
Intelligent Transportation Systems Section  
605 Suwannee Street, M.S. 90  
Tallahassee, Florida 32399-0450  
(850) 410-5600  
Revised: March 28, 2007

*March 28, 2007 – Draft Version 1.1*

*i*



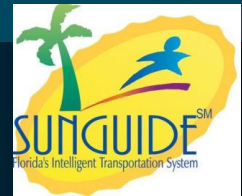
# FHP Regional Communication Center







# FHP Traffic Incident Web Site



FHP - Florida Highway Patrol - Traffic Incidents by Region - Microsoft Internet Explorer

File Edit View Favorites Tools Help

Back Forward Stop Home Search Favorites Refresh Print Mail News RSS

Address http://www.fhp.state.fl.us/traffic/ Go Links

## Traffic Incidents by Region

Reports are updated every five minutes. All reports are troop level reports, even when selected by county.

Select a County

Select a Troop

---

**Do you need to:**

- Renew your Driver License?
- Renew your Vehicle Registration?
- Change your address?

**If so click here!**

For more information about the Florida Highway Patrol Troops:

Select a Troop

[State Road Listings by Troop](#)

[Construction Projects](#)

[Florida Traffic Information](#)

[Florida 511 - Traveler Information](#)

"Experiencing problems with this page?"

Effective 07/01/03.

Start | FHP - Florida Highway... | 12:09 PM



# Regional Crash Report



Florida Highway Patrol - Traffic - Microsoft Internet Explorer

Address: http://www.fhp.state.fl.us/traffic/crs\_h407.htm

Florida Highway Patrol - Traffic Crash Report - 20 incidents shown.  
 FHP Troop D serving the Orlando, Deland, Cocoa area  
 Information Last Update: 11:51:45 on 03/19/07

View: Select a County | FHP Home | Traffic Page | FDOT Road Construction Info. | Report An Error

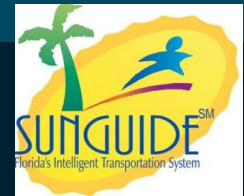
Show Map

INCIDENT TYPE	DISPATCH TIME	ARRIVE TIME	COUNTY	LOCATION	REMARKS
Hit and Run Crash w/roadblock	7:01:28 AM	8:43:07 AM	ORANGE	<a href="#">TANNER RD [TANNER RD] x[LAKE PICKETT RD] [ORLANDO]</a>	NO ROADBLOCK
Fire - Structure	9:04:09 AM	9:43:21 AM	ORANGE	<a href="#">BRIAR DR [7008 BRIAR DR] x[WESTMAR DR] [ORLANDO]</a>	AREA CLEAR
Vehicle Crash w/injuries	9:14:19 AM	10:03:06 AM	ORANGE	<a href="#">5051 EDGEWATER DR x[LEE RD] [ORLANDO]</a>	NO ROAD BLOCKAGE
Fire - Structure	9:16:46 AM	9:56:11 AM	ORANGE	<a href="#">10TH ST [156] x[S HAWTHORNE AVE] [APOPKA]</a>	AREA CLEAR
Vehicle Crash w/injuries	9:18:26 AM	9:48:12 AM	ORANGE	<a href="#">ECONLOCKHATCHEE TRL x[E COLONIAL DR] [ORLANDO]</a>	UNKNOWN ROAD BLOCKAGE
Vehicle Crash w/injuries	10:21:39 AM	10:49:16 AM	ORANGE	<a href="#">ROCKWOOD AVE x[MARY JESS RD] [ORLANDO]</a>	ROAD CLEAR
Vehicle Crash	10:55:36 AM	11:07:46 AM	BREVARD	<a href="#">US-1 NB x[LOUIS DR] [COCOA]</a>	ROAD CLEAR
Vehicle Crash w/roadblock	11:08:21 AM	11:23:53 AM	ORANGE	<a href="#">SR-600 x[W MICHIGAN ST] [ORLANDO]</a>	NOW BOTH SOUTH BOUND LANES OF STATE ROAD SIX HUNDRED ARE CLOSED AND TRAFFIC BEING ROUTED THROUGH TWO GUYS PARKING
Vehicle Crash	11:09:41 AM	11:35:39 AM	ORANGE	<a href="#">PERSHING AVE x[REDDITT RD] [ORLANDO]</a>	NO ROAD BLOCKAGE
Vehicle Crash w/injuries	11:20:33 AM		OSCEOLA	<a href="#">FLORIDA PKY [805] x[ROYAL PALM DR] [KISSIMMEE]</a>	ROAD BLOCKS
Vehicle Crash	11:14:06 AM	11:27:14 AM	ORANGE	<a href="#">GOLDENROD RD x[VALENCIA COLLEGE LN] [ORLANDO]</a>	NO ROAD BLOCKAGE
Vehicle Crash	11:41:34 AM		ORANGE	<a href="#">CENTRAL FLORIDA PKY x[US441] [ORLANDO]</a>	NO ROAD BLOCKS
Vehicle Crash	11:27:50 AM	11:51:34 AM	OSCEOLA	<a href="#">US-192 x[CELEBRATION AVE] [KISSIMMEE]</a>	NO ROAD BLOCKAGE

Start | Florida Highway Patro... | 12:10 PM



# Incident Screen Display via Google™ Map



Florida Highway Patrol - Traffic - Microsoft Internet Explorer

Address: [http://www.fhp.state.fl.us/traffic/crs\\_h407.htm](http://www.fhp.state.fl.us/traffic/crs_h407.htm)

**Florida Highway Patrol - Traffic Crash Report - 20 incidents shown.**  
 FHP Troop D serving the Orlando, Deland, Cocoa area  
 Information Last Update: 11:51:45 on 03/19/07

View: Select a County | **FHP Home** | **Traffic Page** | FDOT Road Construction Info. | Report An Error

Map | Satellite | Hybrid

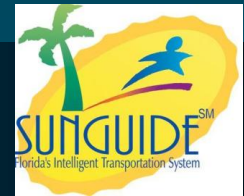
Incident # : DRCC07CAD034154  
 Date : 3/19/2007  
 Incident Type : Vehicle Crash w/roadblock  
 Dispatched : 11:08:21 AM  
 Arrival : 11:23:53 AM  
 County : ORANGE  
 Location : SR-600 x(W MICHIGAN ST) [ORLANDO]  
 Remarks : NOW BOTH SDUTH BOUND LANES OF STATE ROAD SIX HUNDRED ARE CLOSED AND TRAFFIC B

\* If the incident you have selected is not on the mapping, it is because no longitude and latitude is available to correctly determine the incident location.

Start | Florida Highway Patrol - ... | 12:15 PM



# iFlorida GUI - Incoming Message Page



FLCRS v03\_102\_015

Incoming Messages Region: All Event Type: All Back

**CAD Event List**

ORCC07CAD015251 debris on roadway  
on unknown road at 28.554N, 81.270W  
7:17 AM, 02/06/07

Show Accepted Events

Refresh Sort by Start Time (Asc.)

Brief descriptions My situations only Sort by Create Time  History View Settings Refresh

ends soon recently created from archive

Situation #: ORCC07CAD015251 Compare Messages

CARS: debris on roadway  
on unknown road at 28.554N, 81.270W  
since 7:17 AM, 02/06/07

Edit

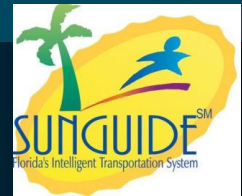
CAD: 02/06/07 7:17:08 AM  
DEBRIS ON ROADWAY  
-81.27048 28.55385  
Location: SR-417 EXIT RAMP SB x[VALENCIA COLLEGE LN] [ORLANDO]  
Remarks:

Accept Hold Take Over Event





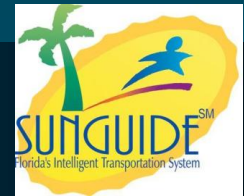
# iFlorida GUI – FHP Incident Icon



The screenshot displays the iFlorida GUI interface. At the top, the title bar reads "FLCRS v03\_102\_015". Below the title bar is a "Situation Map" header with a "View Settings" button. On the left side, there is a "Legend" panel with various incident icons such as Accident, Road Closure, Congestion, Construction, Danger, Delay, Hazard, Event, Ferry, Info, Lane Closed, Weather Report, Weather Warning, Parking, Visibility, Warning, Wind, Range of Incident, 511 Report, DMS Sign, and Traffic Detector. Below the legend is an "Incoming Messages" section showing "Region: Statewide", "Requires Approval: 1", and "On Hold: 0", with a "View" button. The main map area shows a geographical view of the Fort Myers region, including counties like Charlotte Co., Lee Co., Hendry Co., and Collier Co., and cities like Fort Myers, Estero, Bonita Springs, Naples, and Vanderbilt Beach. Several incident icons are overlaid on the map, including a yellow square with a black 'X' and a red square with a white 'X'. At the bottom of the map, coordinates are displayed: "Lat=26.3743; Lon=-81.7157; Scale=757". Below the map are four control panels: "Pan/Zoom Controls" with In, Out, and directional arrows; "Area Controls" with Region, Default, and Back buttons; "Mouse Action" with instructions "Left is Zoom / Center" and "Right is Create Situation"; and "Master Clock" showing "7:23:43 AM". The Windows taskbar at the bottom shows the Start button and several open applications: "FLCRS - Microsoft Int...", "FLCRS v03\_102\_015", and "Document1 - Microsof...".



# iFlorida GUI – FHP Incident Detail



**Situation Map** | Legend | View Settings | Back | Help

**Legend**

- Accident
- Road Closure
- Congestion
- Construction
- Danger
- Delay
- Hazard
- Event
- Ferry
- Info
- Lane Closed
- Weather Report
- Weather Warning
- Parking
- Visibility
- Warning
- Wind
- Range of Incident
- 511 Report
- DMS Sign
- Traffic Detector

**Incoming Messages**

Region: Statewide

Require Approval: 1  
On Hold: 0

**Situation element**

accident on unknown road at 26.431N, 81.788W

History:

1. created by lnmibe at 7:23 AM, 02/06/07  
CADs-FMRC07CAD010071.1 Author: NA-CAD accident on unknown road at 26.431N, 81.788W since 7:19 AM, 02/06/07 Internal Comment: Incident ID: FMRC07CAD010071 Incident type: ACCIDENT County/Region: Location: CORKSCREW RD x[THREE OAKS PKY] [ESTERO]  
Remarks: @WEB NO INJ NO ROADBLOCK Priority level: high Access level: public domain

OK More No History Delete

Lat=26.3743; Lon=-81.7157; Scale=757

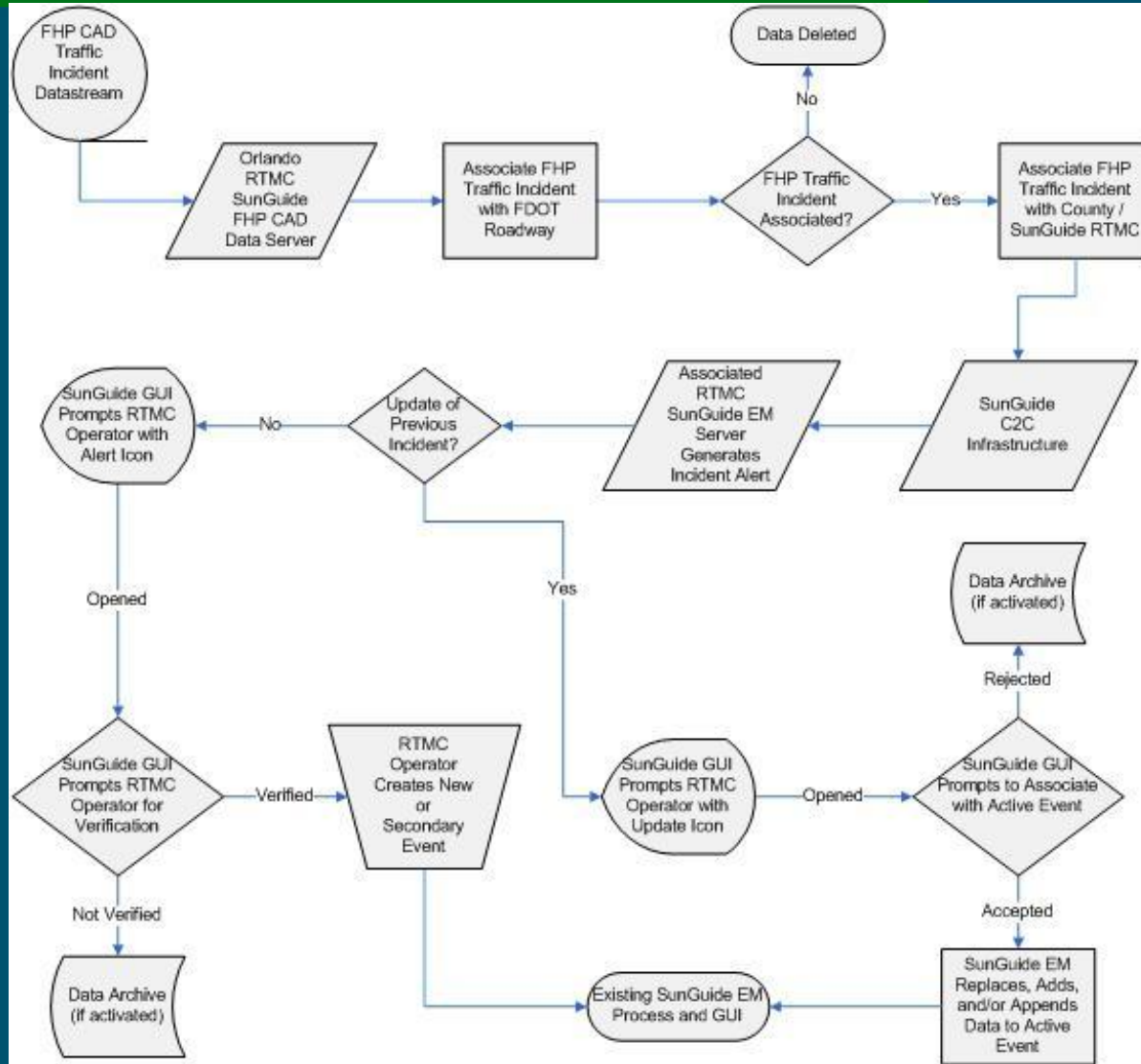
**Pan/Zoom Controls** | **Area Controls** | **Mouse Action** | **Master Clock**

7:24:02 AM





# Proposed Concept for SunGuide FHP CAD Interface







# FHP Incident Alert - Example



SunGuide EmPm Main Event List - Microsoft Internet Explorer

File Edit View Favorites Tools Help Links >>

**System Alert, FHP Alert**

Event List Block CCTV Road Rangers/SIRV Reports Audit Admin Logged in as dashon LOG OUT

Enter a single value → Event Number Search Reset List Printable List Add Event

ID	Event	Primary Vehicle	Event Type	Blockage	RR/SIRV	Org	Operator	Date Added	Last Updated
Active Events with Travel Lane Blockage									
Active Events <i>without</i> Travel Lane Blockage									
304752			Disabled Vehicle		T18	SGB TMC	TV	11/13 4:02 PM	11/13 4:02 PM
304751	BC 95 S Beyond Exit 36A ATLANTIC BLVD		Disabled Vehicle	Right Shoulder Blocked	T15	SGB TMC	TV	11/13 3:53 PM	11/13 3:58 PM
304750	BC 95 N Beyond Exit 18 HALLANDALE BEACH		Disabled Vehicle	Right Shoulder Blocked	T09	SGB TMC	CP	11/13 3:50 PM	11/13 3:55 PM
304749	BC 595 W At Exit 3 NOB HILL RD	Blue Geo TAG# FL-H89WZV	Disabled Vehicle	Right Shoulder Blocked	T01	SGB TMC	CP	11/13 3:47 PM	11/13 3:59 PM
304747	BC 595 E At Exit 7 DAVIE RD		Disabled Vehicle	Right Shoulder Blocked	T16	SGB TMC	CP	11/13 3:33 PM	11/13 3:55 PM
Unconfirmed Events									
Unresolved Events									

**Automated Detection Alerts**

FHP Reported Incident I-95 Before Cypress Creek 2 mins. ago

**Currently Blocked CCTVs**

Copyright © Florida Department of Transportation, 2005-2006



# Questions and Next Steps?



# Change Management Board



## AMBER Alert

Gene Glotzbach



# Change Management Board



## Using SunGuide<sup>SM</sup> in Multiple TMCs Currently

Steve Corbin



# Change Management Board



## Using SunGuide<sup>SM</sup> in Multiple TMCs Currently

Steve Corbin



# Issues



- **Single SunGuide installation used in multiple locations**
- **Operations staff with geographic responsibilities**
- **Separate / combined reporting**
  - **Report regions separately**
  - **Report regions combined**



# Capabilities



- **Introduce concept of Resource Groups**
  - Identify equipment with resource groups
  - Associate users with resource groups to which their permissions apply
- **Enforce or suspend application of Resource Groups**
  - Temporarily, e.g. when staffing changes
  - Scheduled, e.g. during shifts with minimal staffing
- **Reporting**
  - Based on resource group
  - Based on all equipment



# Example

- **Two Resource Groups: BC and PC**
- **Operator**
  - Operator OB has typical operator privileges
  - Operator OB associated with Resource Group BC
- **During “normal operations” OB can control equipment in BC**
- **Schedule suspends Resource Group enforcement between 10 PM and 6 AM: OB can control BC and PC**





# Change Management Board



## Closing and Action Item Review

Steve Corbin, CMB Chairman