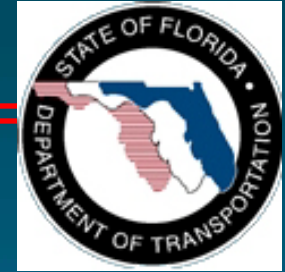


Change Management Board Meeting

Wednesday, May 22 2012

Video Conference: CO- Burns Video Bridge 3

Audio: 850 - 410 - 5667



Welcome and Call for Quorum

Javier Rodriguez, CMB Chairman



Agenda



Time	Item	Lead
1:30 – 1:35	Welcome and Call for Quorum	Javier Rodriguez
1:35 – 1:40	Previous Meeting Recap and Action Item Review	Javier Rodriguez
1:40 – 1:50	ITS WAN Update	Randy Pierce or Frank Deasy
1:50 – 1:55	SSUG Update	John Hope
1:55 – 2:00	Event Type Mapping (vote)	John Hope or Jason Summerfield
2:00 – 2:15	Video on Desktop	Clay Packard
2:15 – 2:35	Bulk Update AVL RR (vote)	Robert Heller or Tucker Brown
2:35 – 3:00	Need for SunGuide GUI update	Arun Krishnamurthy



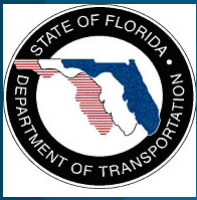
Agenda



Time	Item	Lead
2:50 – 3:00	Break	
3:00 – 3:15	Vehicle Alert Templates <i>(vote)</i>	Robert Heller or Tucker Brown
3:15 – 3:30	DMS Blanking	Robert Heller or Tucker Brown
3:30 – 3:45	DMS C2C for OOCEA <i>(vote)</i>	Robert Heller or Tucker Brown
3:45 – 4:00	Update on upcoming SunGuide releases	Arun K or Robert Heller
4:00 – 4:15	Top Priority SunGuide Item by District	Arun Krishnamurthy
4:15 – 4:20	Action Item Review	Javier Rodriguez

CMB agenda, slides, and attachments posted here:

http://www.dot.state.fl.us/trafficoperations/ITS/Projects_Deploy/CMB.shtm



Change Management Board



Previous Meetings Recap and Action Items Review

Javier Rodriguez



November 2011 Action Items



1. A. Krishnamurthy to send T. Hensley the SQL Storage Guidelines document.
2. Districts to review Footprint 1744 suggestions and provide comments for finalization.
3. SwRI to provide cost estimate / description for making separate templates for Amber, Silver and Leo alerts.
4. SSUG to discuss ONVIF and requirements for video decoding.
5. A. Krishnamurthy to send ONVIF requirements and cost estimate to Districts.
6. SSUG to discuss bulk update AVL-RR solutions.



Change Management Board



ITS WAN Update

Randy Pierce or
Frank Deasy



ITS WAN Update-The Future



- **FTE RTMCs, Pompano and Turkey Lake**
 - ITS WAN equipment installed at Pompano RTMC
 - Next Step: FTE switch configuration and connection to ITS WAN switch
- **Connecting D7 & D1**
 - ITS WAN equipment ready for on-site commissioning
 - Fiber splicing needed from D6 to FTE fiber
 - TransCore preparing to test and characterize fibers
- **Connecting D6 RTMC to TERL**
 - 1 Gbps connection in place
 - Supporting testing and video to the State EOC
- **Connecting D3 RTMCs, Pensacola and Tallahassee**
 - GBIC's received, connections being scheduled



ITS WAN Update-The Future



- **FHP CAD**
 - Connected directly to ITS WAN equipment at D5 RTMC
 - Available to Districts connected to ITS WAN
- **MultiCast Re-Addressing**
 - Districts should re-address now to enable Statewide MultiCasting
 - VAS can then receive MultiCasting video without the need for further re-addressing
- **Working with VAS**
 - Replacing dedicated circuits with ITS WAN where fiber connections are available
 - Resolving connectivity issues at D5 and D4



Change Management Board



SSUG Update

John Hope



SSUG Update

Current Topics



- C2C Issues Discussion
- ONVIF Video Encoders/Decoders Plans
- Event Type Flag Recommendations
- HAR and SQL Storage Guidelines Feedback
- SSUG Charter Document
- Zero Speeds and Occupancy Issue
- Additional User Permissions per devices/highways
- AVL-RR Mobile Reconnect Issue Recommendations

Agenda and notes available here:

http://www.dot.state.fl.us/trafficoperations/ITS/Projects_Deploy/SSUG.shtm



Change Management Board



Event Type Mapping (vote)

John Hope &
Jason Summerfield



Footprint 1744: Event type flag



- SSUG suggestions for response plans event type flags are in the following table

Event Type	Current SunGuide DMS event type flag	SSUG suggestions for DMS, email and FL-ATIS event type tag in auto messages
ABANDONED VEHICLE	ABANDONED VEHICLE	<i>DISABLED VEHICLE</i>
CRASH	INCIDENT	<i>CRASH</i>
BRIDGE WORK	CONSTRUCTION	<i>CONSTRUCTION</i>
CONGESTION	CONGESTION	<i>CONGESTION</i>
DEBRIS	INCIDENT	<i>DEBRIS</i>
DISABLED VEHICLE	DISABLED VEHICLE	<i>DISABLED VEHICLE</i>
EMERGENCY VEHICLES	INCIDENT	<i>EMERGENCY VEHICLES</i>
OFF RAMP BACKUP	INCIDENT	<i>CONGESTION</i>
PEDESTRIAN	INCIDENT	<i>PEDESTRIAN</i>
POLICE ACTIVITY	INCIDENT	<i>EMERGENCY VEHICLES</i>



Footprint 1744: Event type flag



Event Type	Current SunGuide DMS event type flag	SSUG suggestions for DMS, email and FL-ATIS event type tag in auto messages
PSA	SPECIAL EVENT	<i>SPECIAL EVENT</i>
ROAD WORK - EMERGENCY	CONSTRUCTION	<i>CONSTRUCTION</i>
ROAD WORK - SCHEDULED	CONSTRUCTION	<i>CONSTRUCTION</i>
SPECIAL EVENT	SPECIAL EVENT	<i>SPECIAL EVENT</i>
VEHICLE ALERT	(Some template)	<i>Needs to be specific: silver, leo, amber</i>
VEHICLE FIRE	INCIDENT	<i>VEHICLE FIRE</i>
VISIBILITY	INCIDENT	<i>LOW VISIBILITY</i>
WEATHER	INCIDENT	<i>WEATHER ALERT</i>
EVACUATION	OTHER	<i>EVACUATION</i>
FLOODING	INCIDENT	<i>FLOODING</i>
OTHER	OTHER	<i>OTHER</i>
INTERAGENCY COORDINATION	OTHER	<i>INTERAGENCY COORDINATION</i>



Event Type Flag



- **Cost: nominal support effort**
- ***(vote)***



Change Management Board



**Video on Desktop:
Virtual Video Wall**

Clay Packard

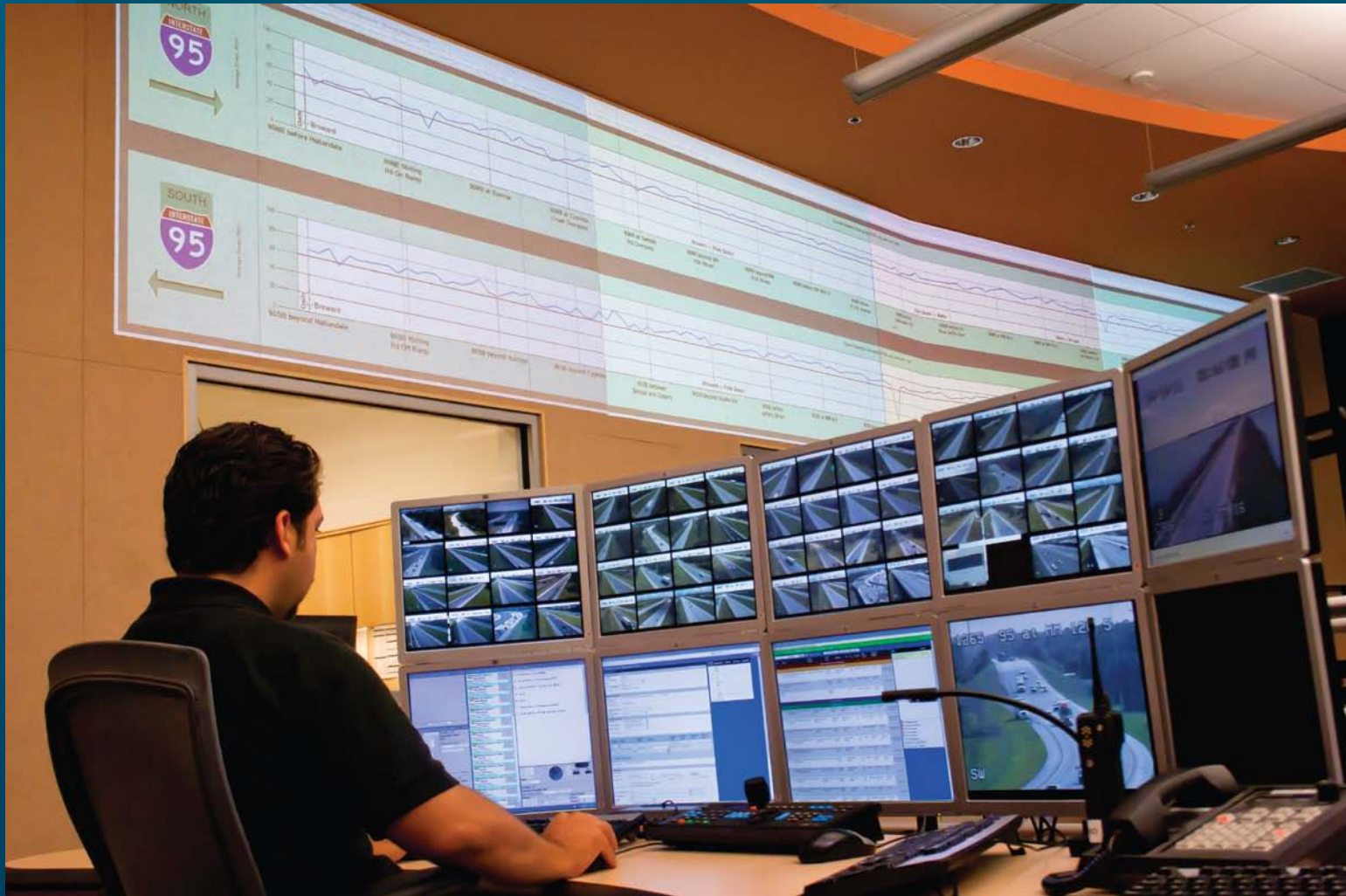


Virtual Video Wall - Background

- Originally requested by Lee County
 - No shared Video Wall
- Video on Desktop used by many users currently
 - No SunGuide Integration
 - Approved by CMB on April 18, 2011
- District 4 has new scope for building this
- We can partner with them to specify a feature-set that works well for all users
- Updated Conops describes value added features



Virtual Video Wall – Inspiration





Show Layer List

Click to view CCTV feeds for I-95 AT MD 24

I-95/S of MD24

C019
76.3

A map interface showing the location of I-95 at MD 24. The map includes a search bar, navigation controls, and a list of active feeds. A large video feed is overlaid on the map, showing a view of I-95 south of MD 24. The video feed includes a north arrow and a speed indicator (C019 76.3).

- Active (5)
- All
- I-68
- I-70
- I-83
- I-95



I-68 AT CUMBERLAND



I-97 AT MD 100





Virtual Video Wall - Concept



- Integrated into Operator map
 - Double-click, drag-and-drop
- Full-featured and detailed for usability
 - User saves/loads VWW viewer positions (and tours)
 - PTZ control and preset buttons in viewer
 - Full screen
 - Virtual video wall in monitor
 - Viewer in the virtual video wall
 - Support for video tour “drag and drop-on-top”
 - Tour configuration saved with virtual video wall layout



AVLRR Bulk Update (FP 1591)

Tucker Brown



The Problem



- **When there are rapid position from the AVLRR system (due to queued updates in mobile application), the GUI will refresh and make the AVLRR screen unusable**
 - **Each position update causes a refresh in the GUI**
 - **Access to GUI is degraded until all updates are processed**



Proposed Solution

- **Bulk Position Update Messages**
 - AVLRR and SPARR Drivers would make a bulk update message that would allow clients to pass older position information
 - AVL Subsystem will store these updates directly to the database with no update notifications to the GUI
 - Client applications will handle the situation of when this message should be used
- **Status Updates**
 - Status update are tied directly to events (assisting/not assisting) so separating them out from events does not work with current design of AVL



Cost/Schedule and Vote

- **Schedule: Released with 6.0**
- **Cost**
 - Drivers/Subsystem: \$10K
 - SPARR Application: \$2.5K
- ***(vote)***



Change Management Board



SunGuide GUI

Arun K



Need for GUI update

- **Move admin editor into SunGuide operator map**
 - D6 high priority item
 - Several FPs would be addressed
- **Convert all IE screens to WPF screens**
 - We believe, software performance improves if we move from IE to WPF
 - When using IE, workarounds needed to make SunGuide work



What could be added to the scope

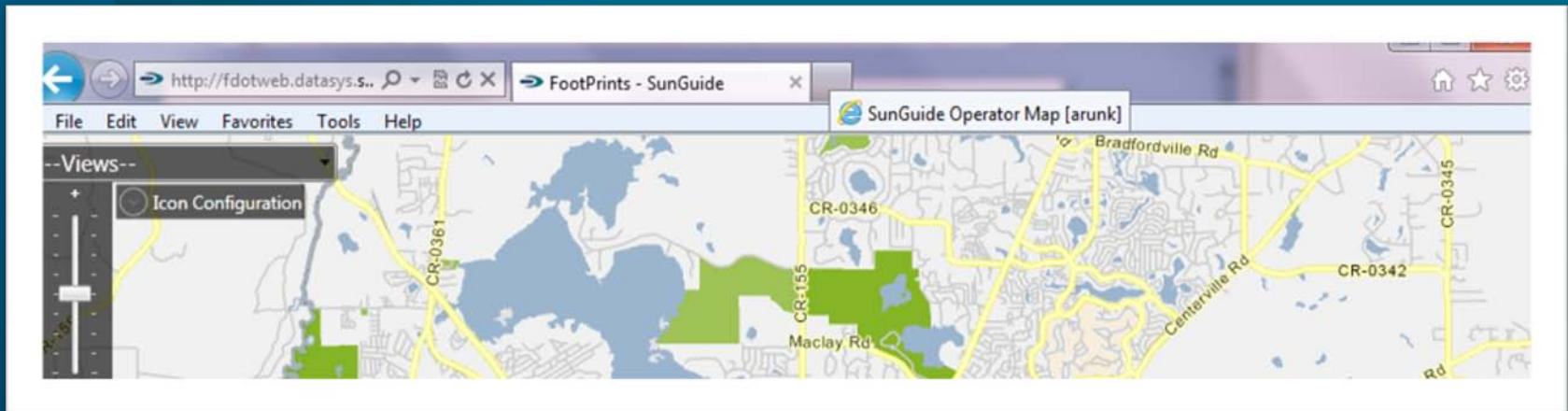


- This touches several aspects of SunGuide
- Could be used as an opportunity to re-design the GUI to better meet our needs



Introduce tabbed GUI

- Inspiration: IE
- Drag and drop screens

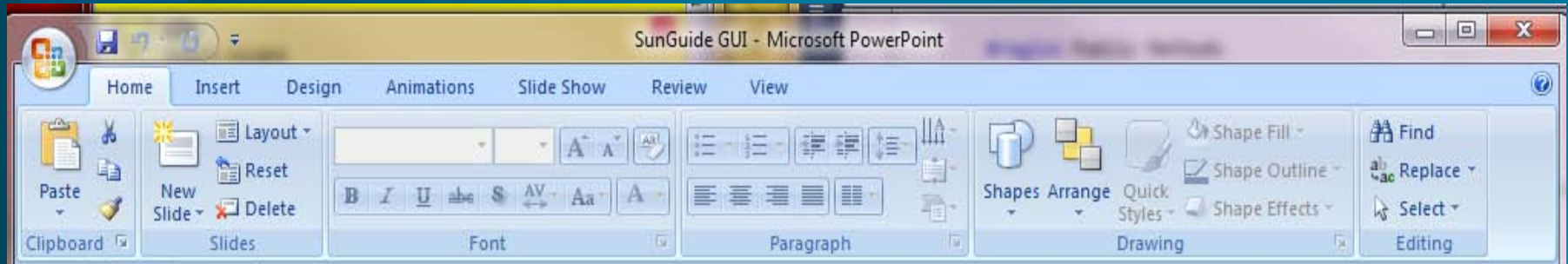




Ribbon style menu structure

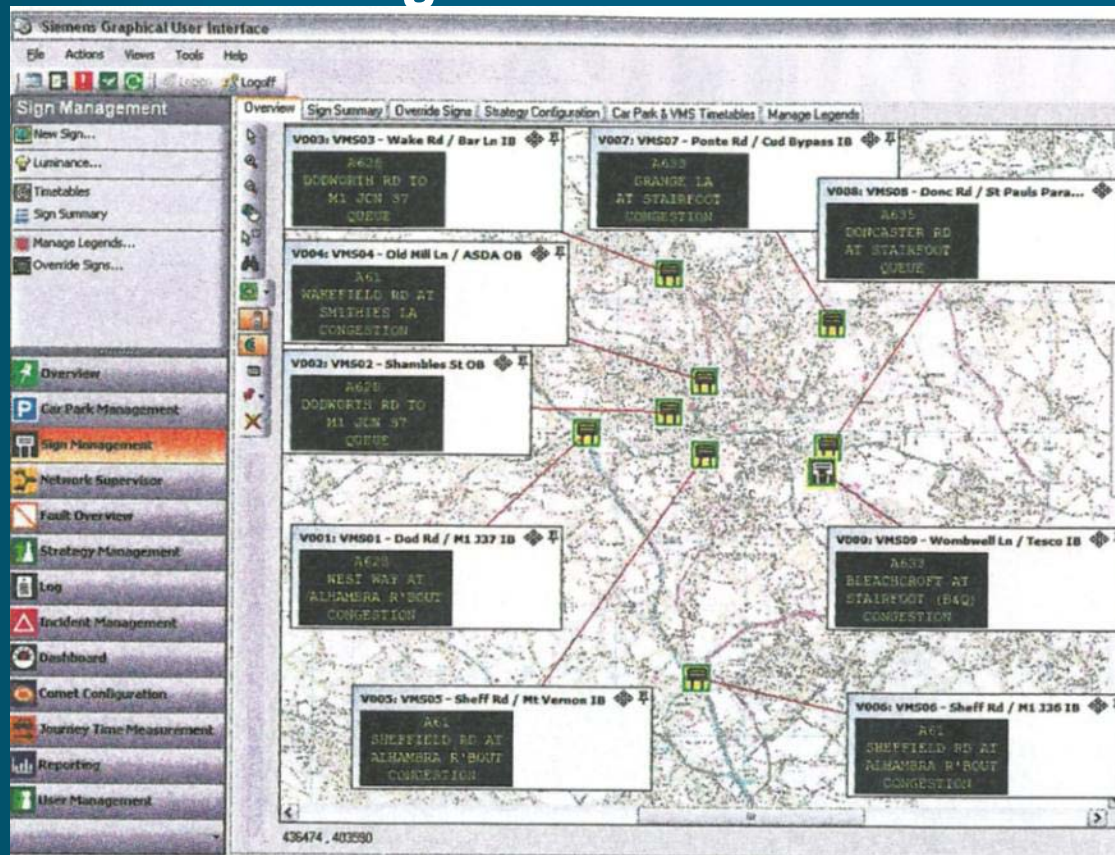


- Inspiration : Microsoft Office, Outlook
- Context specific menu structure



Dock & Pin Screens

- Inspiration: Visual Studio/ Pining and unpinning of screens & docking of screens.



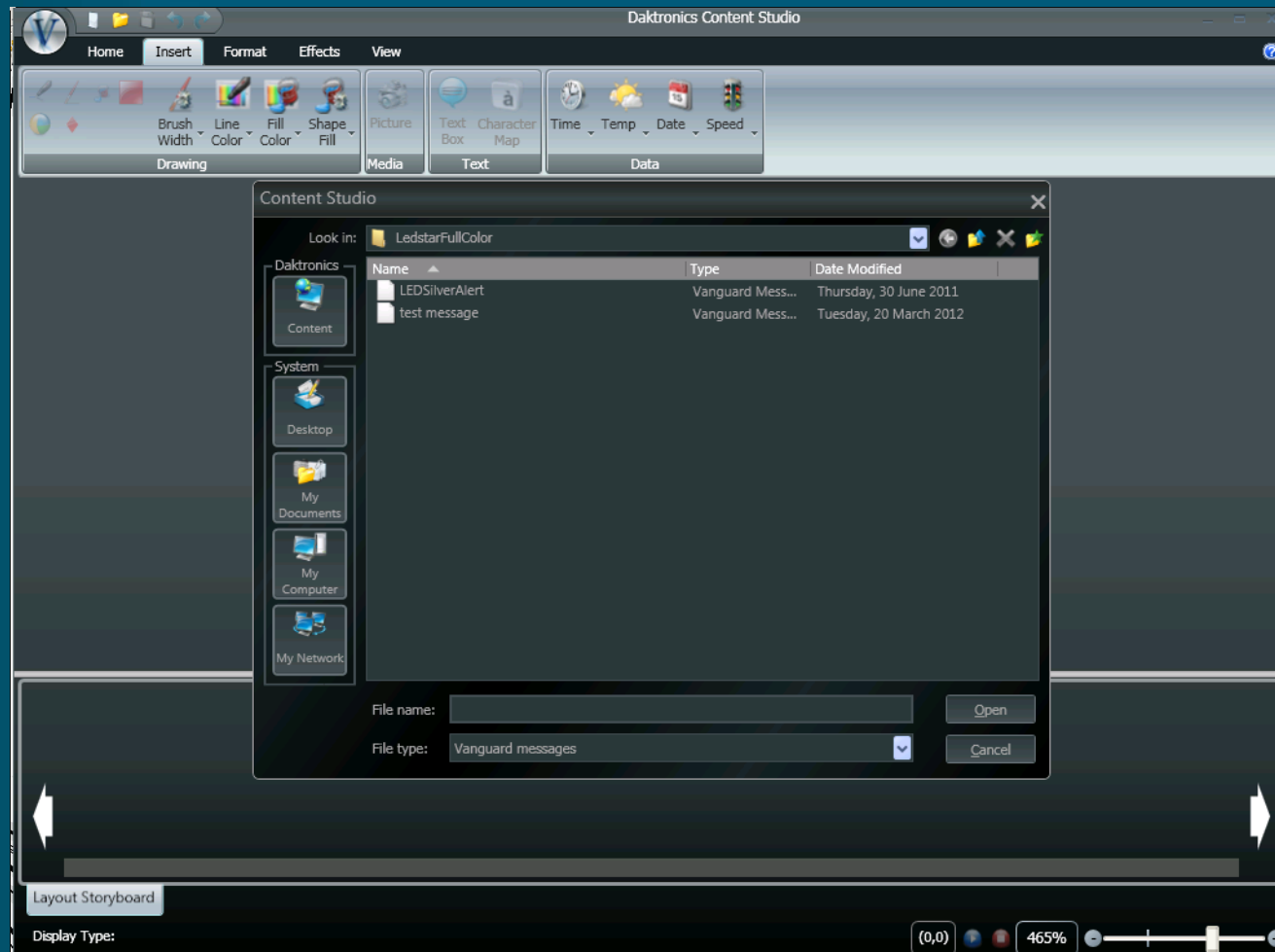
Siemens uses the pinning concept in their software.



Look at similar software



- Daktronics software /use of ribbon style menu





● Delcan software / Consistent “look and feel”

Inventory

CCTV ID# **GDOT-CAM-140** AGENCY: **GDOT** [Edit Privilege](#)

CCTV Video Server

Device Information

ID: **GDOT-CAM-140**

Active: **N**

Maximum Presets: **10**

Image Support: **other**

Control Type: **not specific**

Location Information

Roadway Type:

Roadway Name: **I-85**

Direction: **S**

Cross Street: **Clairmont**

City:

Region:

County:

Mile Marker: **91.18**

State: **GA**

Vendor Information

Vendor Name:

Protocol Name:

Camera Control Information

Comm Type: **N/A**

Drop ID:

Optionals:

Viewer

CCTV ID# **GDOT-CAM-516** [View Only](#)

1575 N of Hwy 92
1575 N of Hwy 92

Status: **Failed** I-575 N at N OF Hwy 9 VLC

Auto Auto
+ + +
- - -
ZOOM FOCUS IRIS

[Change Play](#)

[Close Tours](#)

- CCTV Tours**
- RJ 4 Camera Tour
 - RJ 4 Cam
 - Kiersten Tour

- Camera List**
- GDOT-CAM-1
 - GDOT-CAM-100
 - GDOT-CAM-101
 - GDOT-CAM-102

Tour Camera List

Reporting | **CCTV Reporting**

Report Category

- CCTV Activity History
- CCTV Status Report - Current
- CCTV Status Report - Historical

Device Information

ID: **All**

Date Range

Date (mm-dd-yyyy): **10/14/2010** Time (hh24:mi): **08:58**

Map

Map controls: **Atlanta Metro**, [Close Legend](#), [Icon Layering](#)

[DMS](#) [CCTV](#) [Events](#) [Ramps HAR](#) [Weather VDS](#)

Select a Device

[All](#) [DMS](#) [CCTV](#) [Events](#) [Ramps HAR](#) [Weather VDS](#) [AVL](#) [Gates](#) [TTPaths](#) [Contacts](#)

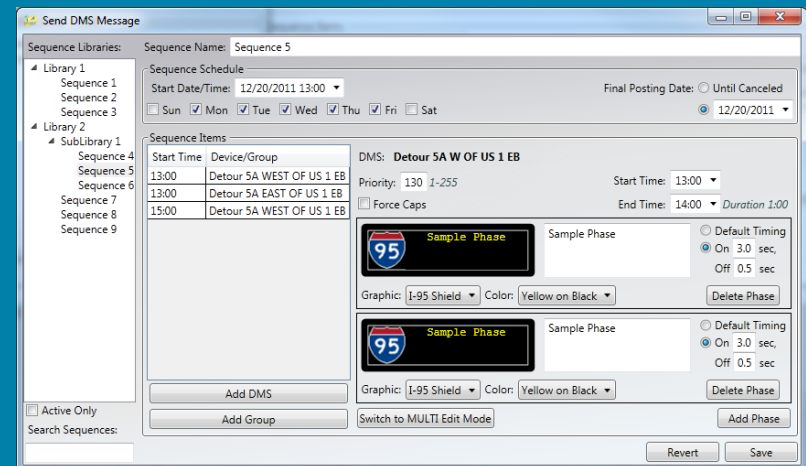
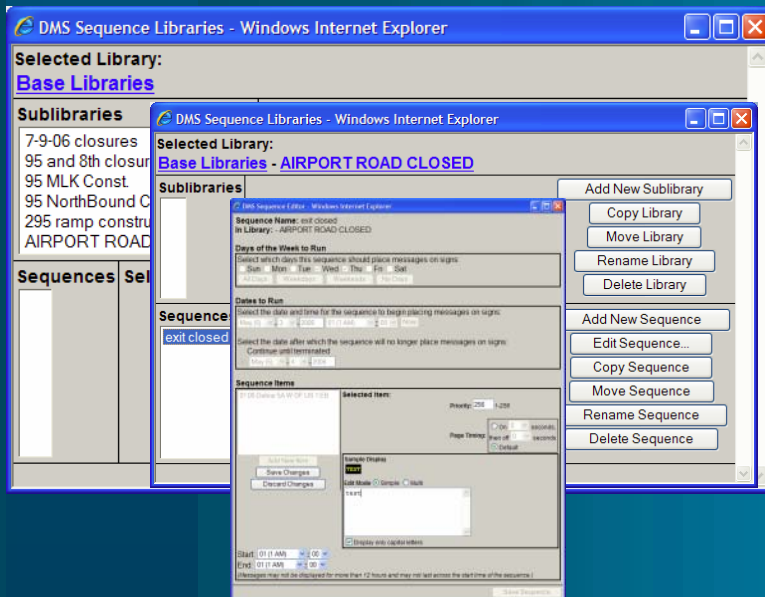
[DMS](#) [CCTV](#) [Events](#) [Ramps HAR](#) [Weather VDS](#) [AVL](#) [Gates](#)



Cost to develop new GUI

- Order of magnitude effort similar (design effort is unknown as we haven't gone through it)
 - If screens kept same, it still needs to be re-done from IE to WPF

Conversion of IE screens to WPF





Summary



- **Need to move to new GUI**
 - Admin editor needs to be moved within SunGuide
 - Performance improved by migrating from IE to WPF
 - Will require the software installed in every TMC computer rather than be browser based.



Change Management Board



10 Minute Break

Everyone



Change Management Board



Vehicle Alert Templates: Amber, Leo, and Silver Alerts

Tucker Brown



The Problem

- **Current implementation does not distinguish between different types of vehicle alerts**
 - Amber
 - Silver
 - Leo
- **Only one template that can be saved and is used for all three types**
 - Leads to slower response time as operators must manually edit messages



Proposed Solution

- **Create 3 new event types**
 - Amber Alert
 - Silver Alert
 - Leo Alert
- **“Vehicle Alert” would be ceased but would remain in the database**
- **Create ability to define templates for all 3 types**



Proposed Solution



- Standard Device Template format
- No changes to template creation
- New selectable templates for each of the new event types

The screenshot shows the SunGuide Administrative Editor interface. The browser address bar displays `http://fatsrv/SunGuideAdmin/`. The page title is "SunGuide® Administrative Editor". On the left is a navigation tree with categories like AVL/RR, CCTV / VS, Data Archive, DMS, Event Management, Location Configuration, Response Plans, and Vehicle Tracking. The main content area is titled "Edit RPG Device Template" and contains several dropdown menus for selecting templates for different device types. The "Amber alert template" dropdown is highlighted with a red box and is currently set to "amber-alert". Other templates include "On road template" (dms-on-route), "On road ramp template" (dms-on-route-ramp), "Off road template" (dms-off-route), "Off road ramp template" (dms-off-route-ramp), "Road closed template" (dms-route-closed), "Leo alert template" (leo-alert), and "Silver alert template" (silver-alert). At the bottom are "Save and Exit" and "Cancel" buttons.



Proposed Solution



- Standard default templates for DMS, HAR, and TAM
- New default template for email
- Only used in cases of Amber, Leo, or Silver alerts

The screenshot shows the SunGuide Administrative Editor interface. The browser address bar displays <http://fatsrv/SunGuideAdmin/>. The page title is "SunGuide® Administrative Editor". On the left is a navigation tree with the following items: AVL/RR, CCTV / VS, Data Archive, DMS, Event Management (expanded), Location Configuration, Response Plans, and Vehicle Tracking. Under "Event Management", "Device Templates" is selected. The main content area is titled "RPG Device Templates" and contains a list of templates: (Default DMS), (Default HAR), (Default TAM), and (Default Email). The "(Default Email)" entry is highlighted with a red box. Below the list are three buttons: "Add", "Edit", and "Delete".



Cost



- \$10,000
- *(vote)*



DMS Blanking (FP 1310)

Tucker Brown



The Problem



- **When a sign loses communication with SunGuide, the reported message of the sign within SunGuide can not be changed until communications are restored**
 - **FLATIS will continue to report this message as the current state of the DMS even though the DMS may have a different message**
- **Communication status changes may result in the MAS queue and the message of the DMS to become out of sync**



Proposed Solution

- **When a communication loss occurs operators will still be able to blank the message on the sign within SunGuide GUI and FL-ATIS**
 - **Operators will be notified if this is the case to avoid confusion from inconsistencies between the sign and SunGuide at this point**
- **When the sign comes back online, SunGuide will ensure the current message on the MAS queue matches what is displayed on the sign; else, the sign will be updated to match the intended message to be displayed.**
- **Scheduled to be released as part of 5.1.1**



District to District DMS Control

Tucker Brown



The Problem



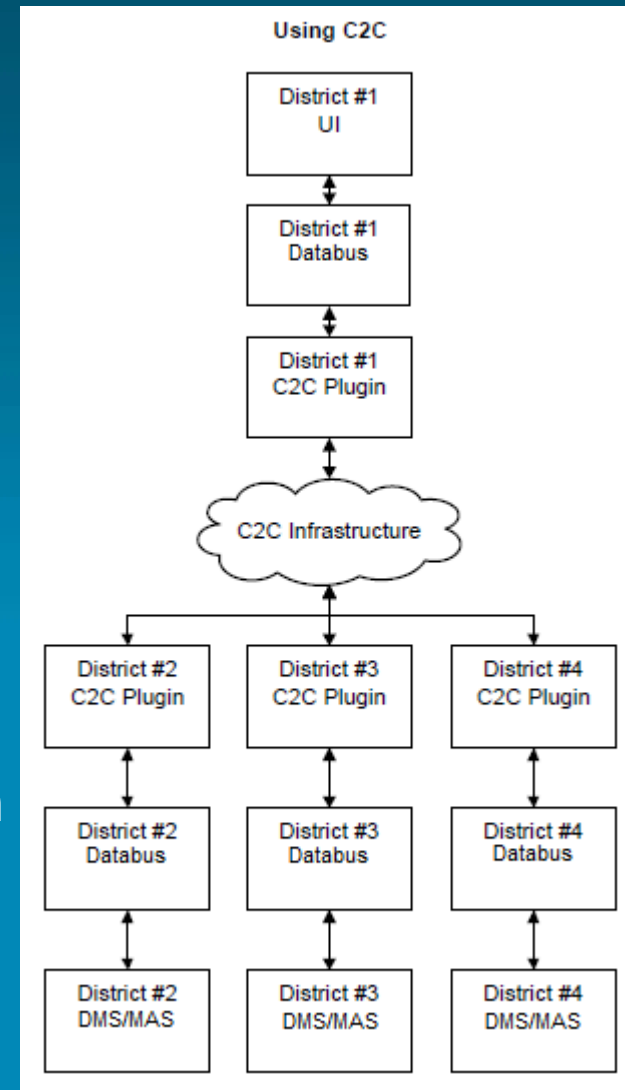
- **When attempting to control another SunGuide installation, C2C DMS control is intentionally limited to a partial set of the full DMS functionality**
 - **Can modify messages, but only if you posted them**
 - **Can not modify/blank messages originating from the remote district**



Possible Solutions



- Expanded C2C command/control capability
 - Web Service based
 - Expanded DMS status
 - NTCIPv2 structure
 - New datatypes (MAS)
 - New commands
 - Current commands do not support full functionality such as blank queue commands
 - New GUI implementation

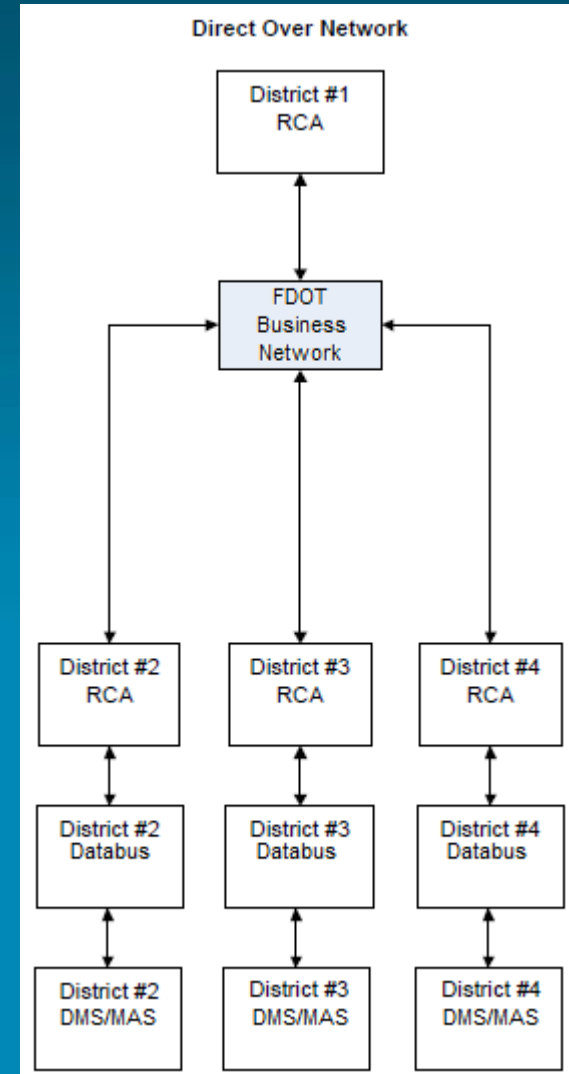




Possible Solutions



- Remote Command Application from TxDOT
 - Socket based connection (more reliable)
 - Expanded DMS GUI
 - Same controls but more DMSs to choose from
 - No new commands or datatypes
 - Command and status data will already exist





Implementation Issues

- Release 6.0 will modify all current DMS GUIs
 - NTCIPv2 to include color graphics
- If enhancement is done before 6.0, SwRI will have to modify existing HTML/JavaScript and re-implement in Release 6.0
- If done along with Release 6.0, schedule will have to be pushed out for more development
- Recommendation is to start development after Release 6.0
 - Allows development against new DMS GUIs



Recommendation

- **SwRI recommends using RCA**
 - Consolidates local and remote DMS control to a single window
 - Gives one set of “full DMS control”
 - Through C2C, new enhancements would need to be done through DMS and C2C
 - More stable/reliable connection



Cost/Schedule and Vote



- Proposed Schedule: Included in the next release after 6.0
- Cost: 66K
- *(vote)*



Change Management Board



Update on upcoming SunGuide releases

Robert Heller



5.1.1 Development Status



Issue	Status
Short name vs long name	100%
Safety Barrier Alert	95% needs configurable list of options
DMS Blanking	50%
Probe Data Matching Algorithm Improvement	50%
Protocol Name (AVI TCP)	100%
Multiple Contact	95%
SPARR Driver	100%
CSV Classification Data	95%



6.0.0 Development Status



Issue	Status
Sql Server Conversion	
Nested tables unwound	100%
User types replaced	100%
Triggers migrated to code	100%
Columns renamed that conflicted with SQL Server reserved words	100%
Dual Support (ADO) 80-85%	85-90%
EM 65%	65%
Database ID	20%
DMS not started	0% (Dylla)
SAS	0 % (Starkweather)



Change Management Board



Top Priority Item by District

Arun Krishnamurthy

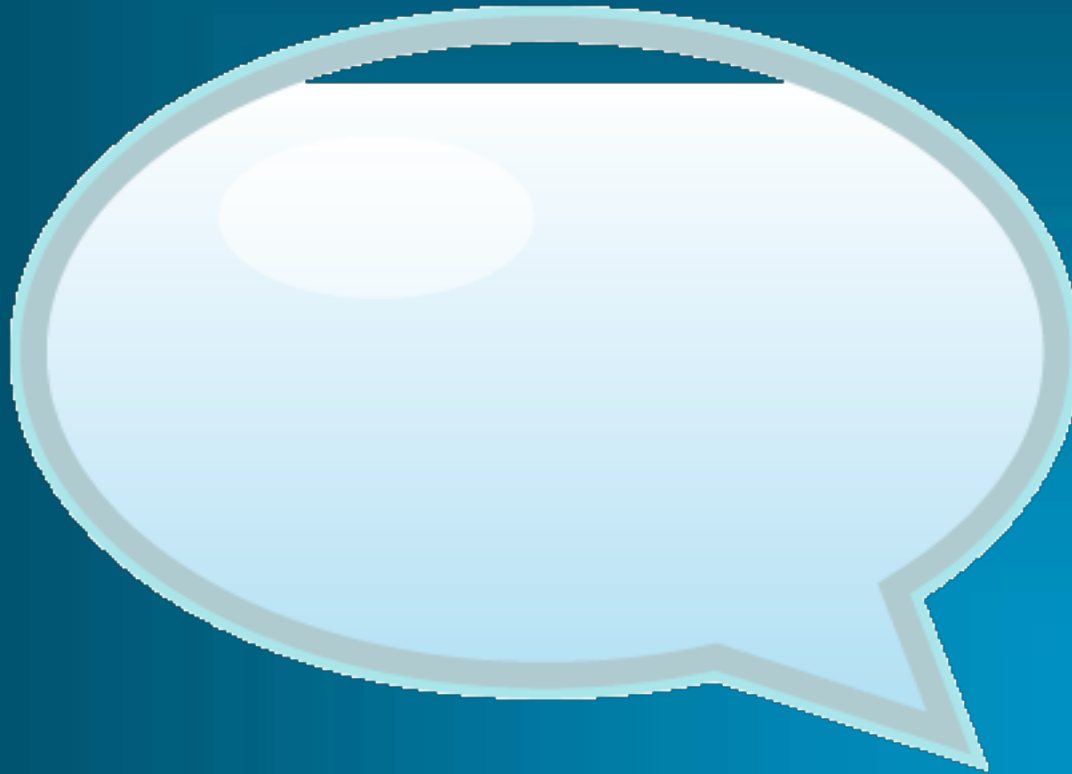


Issues discussed last meeting

- D7 – Floodgate issue
- OOCEA – C2C for DMS
 - Discussed at this CMB
- D1 – FP 722: turn lane in EM
- FTE – short name and long name configurable for emails
 - Added to R5.1.1
- FTE – rich email text
 - Still being investigated



Comments





Change Management Board



Action Items Review

Javier Rodriguez