

TEMPORARY RETAINING WALL SYSTEM DATA TABLES

GEOTECHNICAL INFORMATION		Table Date 1-01-11				
		Reinforced Soil & Random Backfill	Loose Fine Sand	Firm Fine Sand	Loose Clayey Fine Sand	Firm Clayey Fine Sand
Depth Below Existing Ground Line (ft.)	Wall No. 1					
	Wall No. 2					
Effective Unit Weight (pcf)						
Cohesion (psf)						
Internal Friction Angle						
Depth Below Existing Ground Line (ft.)	Wall No. 3					
	Wall No. 4					
Effective Unit Weight (pcf)						
Cohesion (psf)						
Internal Friction Angle						

NOTE:
If the unit weight and/or internal friction angle of the fill proposed by the Contractor differs from that shown above, the Project Engineer will contact both the District Geotechnical Engineer and the Wall Designer for a possible redesign.

RETAINING WALL VARIABLES				Table Date 1-01-11
Wall No.	Wall Settlement			Air Contaminants Classification
	Long Term Settlement (in.)	Short Term Settlement (in.)	Differential Settlement (%) (ft./100 ft.)	

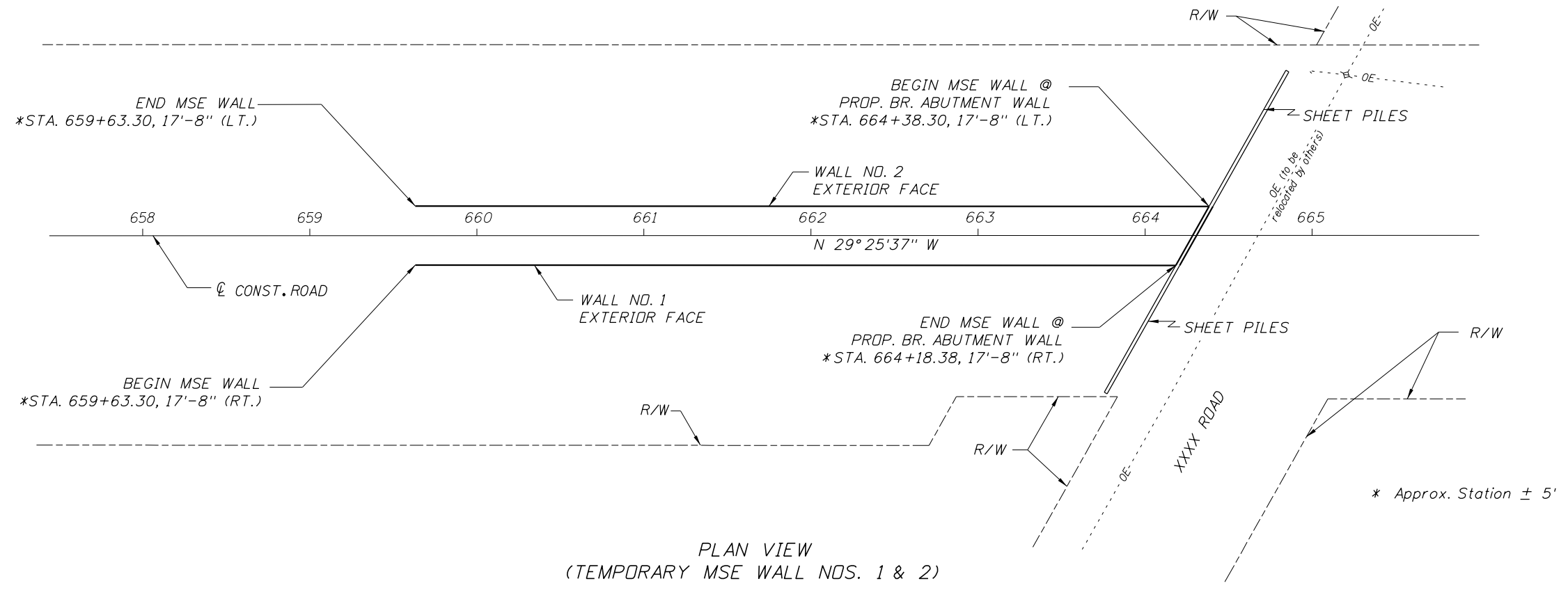
NOTE:
Design walls for the settlements noted in the table.
Long term settlement is measured from the beginning of wall construction.

SOIL REINFORCEMENT LENGTHS FOR EXTERNAL STABILITY										Table Date 1-01-11
Walls 1 thru 4	Wall Height (ft.)									
	Reinforcement Length (ft.)									
	Factored Bearing Resistance (psf)									

NOTES:
1. The reinforcement strap lengths shown above are the minimum lengths required for external stability. The reinforcement lengths used in the construction of the retaining walls will be the longer of that required for external or internal stability (determined by proprietary wall companies).
2. The Factored Bearing Resistances shown above are the critical (lowest) values from all the load cases analyzed using LRFD methodology.

BRIDGE NO. XXXXXX

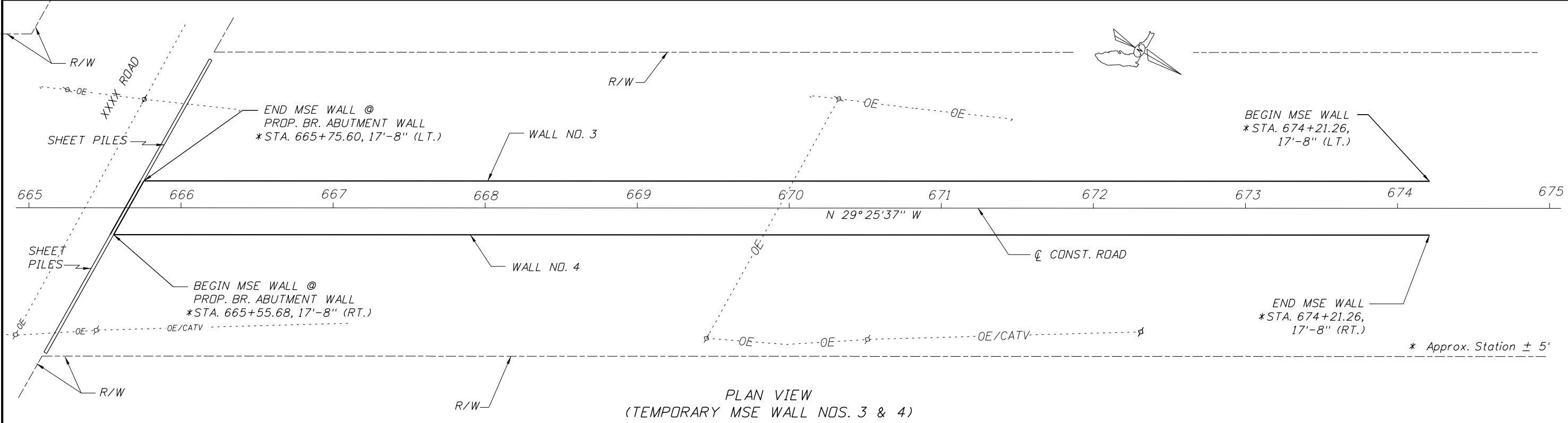
REVISIONS					STRUCTURES DESIGN OFFICE	DRAWN BY: XXX-MM-YY	CHECKED BY: XXX-MM-YY	DESIGNED BY: XXX-MM-YY	CHECKED BY: XXX-MM-YY	STATE OF FLORIDA DEPARTMENT OF TRANSPORTATION			SHEET TITLE:		REF. DWG. NO.
DATE	BY	DESCRIPTION	DATE	BY						DESCRIPTION	ROAD NO.	COUNTY	FINANCIAL PROJECT ID	TEMPORARY CRITICAL MSE WALLS (SHEET 1 OF 3) WALL DATA TABLES	
9/20/13	KWD	Revised for Phased Submittals											PROJECT NAME: TEMPORARY CRITICAL WALL DRAWINGS EXAMPLE 2 TEMPORARY CRITICAL MSE WALLS		SHEET NO.



PLAN VIEW
(TEMPORARY MSE WALL NOS. 1 & 2)

BRIDGE NO. XXXXXX

REVISIONS						STRUCTURES DESIGN OFFICE CENTRAL OFFICE 605 Suwannee Street, MS 33 Tallahassee, Florida 32399-0450	DRAWN BY: XXX MM-YY CHECKED BY: XXX MM-YY DESIGNED BY: XXX MM-YY CHECKED BY: XXX MM-YY	STATE OF FLORIDA DEPARTMENT OF TRANSPORTATION			SHEET TITLE: TEMPORARY CRITICAL MSE WALLS (SHEET 2 OF 3) WALL CONTROL DRAWINGS	REF. DWG. NO.
DATE	BY	DESCRIPTION	DATE	BY	DESCRIPTION			ROAD NO.	COUNTY	FINANCIAL PROJECT ID		
9/20/13	KWD	Revised for Phased Submittals								TEMPORARY CRITICAL WALL DRAWINGS EXAMPLE 2 TEMPORARY CRITICAL MSE WALLS		



BRIDGE NO. XXXXXX

REVISIONS					
DATE	BY	DESCRIPTION	DATE	BY	DESCRIPTION
9/20/13	KWD	Revised for Phased Submittals			

STRUCTURES DESIGN OFFICE
CENTRAL OFFICE
 605 Suwannee Street, MS 33
 Tallahassee, Florida 32399-0450

DRAWN BY: XXX MM-YY	STATE OF FLORIDA DEPARTMENT OF TRANSPORTATION		
CHECKED BY: XXX MM-YY			
DESIGNED BY: XXX MM-YY	ROAD NO.	COUNTY	FINANCIAL PROJECT ID
CHECKED BY: XXX MM-YY			

SHEET TITLE: TEMPORARY CRITICAL MSE WALLS (SHEET 3 OF 3) WALL CONTROL DRAWINGS	REF. DWG. NO.
PROJECT NAME: TEMPORARY CRITICAL WALL DRAWINGS EXAMPLE 2 TEMPORARY CRITICAL MSE WALLS	SHEET NO.