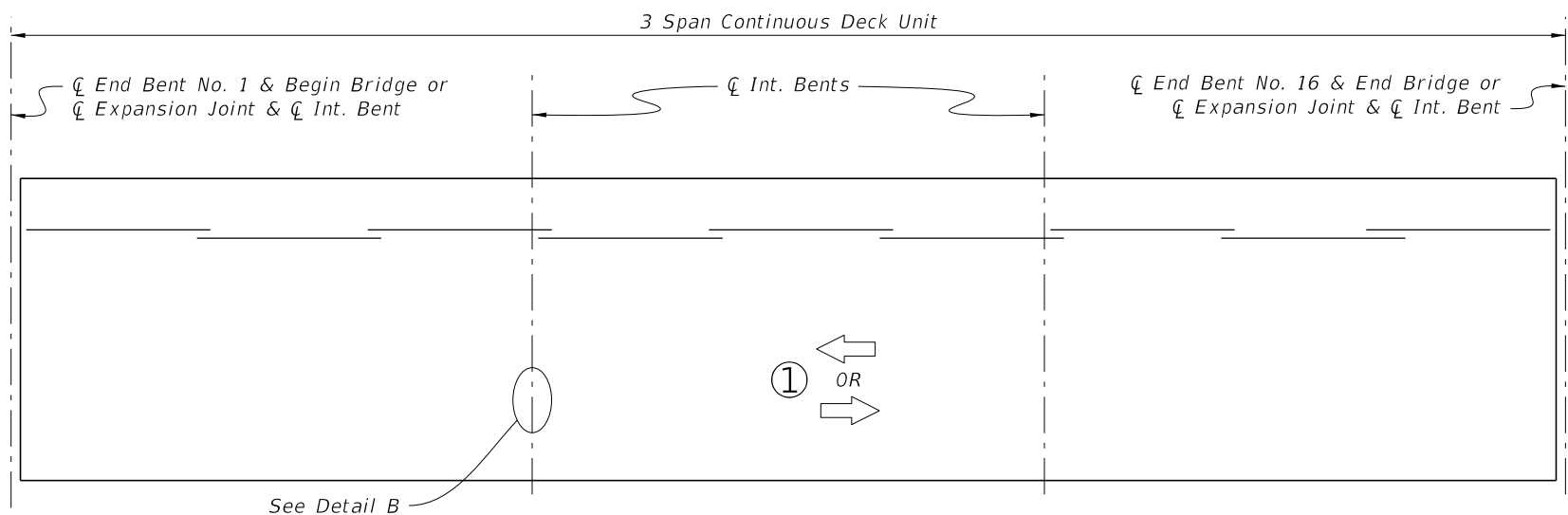


DECK CASTING SEQUENCE - MULTIPLE POURS
(SPANS 1 THRU 3 SHOWN; SPANS 4 THRU 15 SIMILAR)



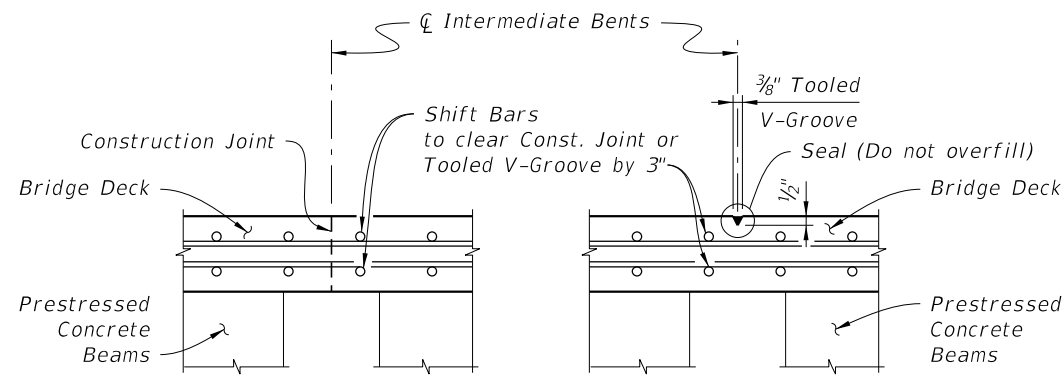
DECK CASTING SEQUENCE - SINGLE POUR
(SPANS 1 THRU 3 SHOWN; SPANS 4 THRU 15 SIMILAR)

LEGEND:

- ③ = Pour Number
- ← = Direction of Pour

NOTES:

1. At the Contractor's option, either Deck Casting Sequence may be used.
2. A minimum of 72 hours is required between adjacent pours in a given continuous deck unit.
3. Fill Tooled V-groove with Rapid Cure Silicone or Hot Poured Seal. Groove shall be clean and free of grease and debris before filling.



DETAIL A

DETAIL B

BRIDGE NO. XXXXXX

REVISIONS						STRUCTURES DESIGN OFFICE CENTRAL OFFICE 605 SUWANNEE STREET, MS 33 TALLAHASSEE, FLORIDA 32399-0450 PE NAME PE NUMBER	DRAWN BY: CHECKED BY: DESIGNED BY: CHECKED BY:	STATE OF FLORIDA DEPARTMENT OF TRANSPORTATION			SHEET TITLE:		REF. DWG. NO.		
DATE	BY	DESCRIPTION	DATE	BY	DESCRIPTION			ROAD NO.	COUNTY	FINANCIAL PROJECT ID	DECK CASTING SEQUENCE SIMPLE SPAN PRESTRESSED CONCRETE BEAMS			SHEET NO.	
											PROJECT NAME:				
											SUPERSTRUCTURE DETAILS EXAMPLE 8 SHEET 1 OF 1				