

***Design Up-date
Training
April 18, 2012***

Thomas A. Andres P.E.
Assist. State Structures
Design Engineer



**Structures Design Bulletin C11-07/
Roadway Design Bulletin 11-07**

On June 30, 2011, a joint
Structures/Roadway Design Bulletin
was issued providing prefabricated
STEEL TRUSS pedestrian bridges
design guidance.

*Design Up-date
Training
April 18, 2012*

Thomas A. Andres P.E.
Assist. State Structures
Design Engineer

Design Guidance outlined in Structures Design Bulletin C11-07/ Roadway Design Bulletin 11-07 was incorporated into the Plans Preparation Manual (PPM), Vol. 1, Section 8.7.2 and the Structures Design Guidelines, Chapter 10 in January 2012.

***Design Up-date
Training
April 18, 2012***

Thomas A. Andres P.E.
Assist. State Structures
Design Engineer

Policy Prior to June 30, 2011

All pedestrian bridges were custom designed and fully detailed in the bid documents.

*Design Up-date
Training
April 18, 2012*

Thomas A. Andres P.E.
Assist. State Structures
Design Engineer

The Problem

In most cases the custom bridge detailed in the plans never got constructed. The contractor substituted a prefabricated proprietary bridge design through a Contractor Redesign.

*Design Up-date
Training
April 18, 2012*

Thomas A. Andres P.E.
Assist. State Structures
Design Engineer

New Policy

When a prefabricated steel truss pedestrian bridges is specified:

- Superstructure plans will not be included in the plans prior to bid.
- Superstructure to be detailed in shop drawings after bid by a Pre-qualified Steel Truss Pedestrian Bridge Producer.
- Foundation and substructure to be detailed in the plans prior to bid.

*Design Up-date
Training*

April 18, 2012

Thomas A. Andres P.E.
Assist. State Structures
Design Engineer

New Policy (cont.)

When a specific non-proprietary steel truss bridge is required due to project aesthetics, etc. (not available by two or more of the FDOT proprietary qualified producers):

- Superstructure, Substructure, and Foundation will be fully detailed in the contract plans prior to bid.

For all non-steel truss spans:

- Superstructure, Substructure, and Foundation will be fully detailed in the contract plans prior to bid.

*Design Up-date
Training
April 18, 2012*

Thomas A. Andres P.E.
Assist. State Structures
Design Engineer


Before Bid

After approval of BDR/30% plans, the Project EOR sends out a Proprietary Pedestrian Bridge Invitation to Participate (ITP) to all preapproved pedestrian bridge producers.

*Design Up-date
Training
April 18, 2012*

Thomas A. Andres P.E.
Assist. State Structures
Design Engineer

Preapproved Pedestrian Bridge Producers

		Metal Producers with Accepted Quality Control Plans		Last Updated: 4/3/2012 4:02:38AM	
FDOT State Materials Office, 5007 N.E. 39th Avenue, Gainesville, FL 32609 (352) 955-6600 The materials/producer listings are updated once every 24 hours, therefore changes to a producer's status may not appear until the next business day.					
Source Number	Producer Name Physical Address	Contact Email / Phone	Additional Information	Status Date of Action	
Bridges					
BR-TX-002	COSMEC 1501 ROCKY RIDGE ROAD ATHENS, TX 75751	DONALD VOSE dvose@cosmecinc.com 903-677-2871			Quality Control Plan ACCEPTED 08/14/2008
BR-NY-002	ECHO BRIDGE 1051 S. MAIN STREET ELMIRA, NY 14904	TOM RADFORD tommy@echobridgeinc.com 607-733-1559	PEDESTRIAN BRIDGE		Quality Control Plan ACCEPTED 08/12/2009
BR-CA-001	EXCEL BRIDGE MANUFACTURING CO HWY 395 & HWY 190 OLANCHA, CA 93549	KEN LONGINO kenlongino@exoelbridge.com 562-944-0701	PEDESTRIAN BRIDGE		Quality Control Plan ACCEPTED 03/03/2008
BR-FL-001	FLORIDA STRUCTURAL STEEL - ADAMO 5205 ADAMO DRIVE TAMPA, FL 33619 USA	STEVE MCGEE smcgee@FSSstructural.com 813-823-2675	MAJOR BRIDGE		Quality Control Plan ACCEPTED 01/03/2005

**Design Up-date
Training
April 18, 2012**

Thomas A. Andres P.E.
Assist. State Structures
Design Engineer

Before Bid (Cont.)

The ITP is intended to solicit qualified producers for information required to design the foundation and substructure of the pedestrian bridge. The following attachments will be included with the ITP:

- Invitation to Participate Cover Letter
- Project Location Map
- General Plan and Elevation
- Bridge Typical Section
- Pedestrian Bridge Data Sheet

*Design Up-date
Training
April 18, 2012*

Thomas A. Andres P.E.
Assist. State Structures
Design Engineer

Before Bid (Cont.)

- The pedestrian bridge producers shall acknowledge receipt of the ITP package.
- To be eligible to participate in the project the pedestrian bridge producers must respond to the ITP on or before the specified due date (prior to 60% plans submittal). All completed Pedestrian Bridge Data Sheets will become part of the plan set.

*Design Up-date
Training
April 18, 2012*

Thomas A. Andres P.E.
Assist. State Structures
Design Engineer

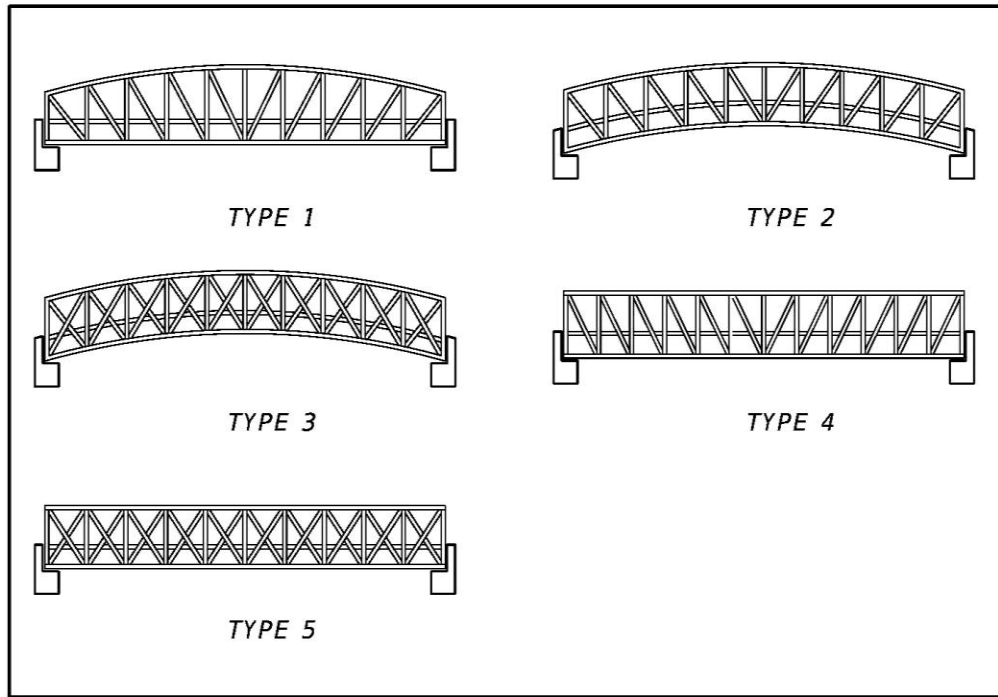
Before Bid (Cont.)

After all ITP responses are received, the Project EOR shall design and detail the foundation and substructure to accommodate all eligible superstructure alternates. Design shall envelope the most extreme loading conditions of all alternates.

*Design Up-date
Training
April 18, 2012*

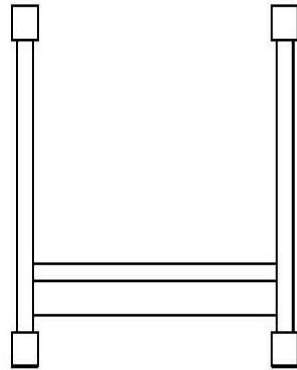
Thomas A. Andres P.E.
Assist. State Structures
Design Engineer

Aesthetic Options

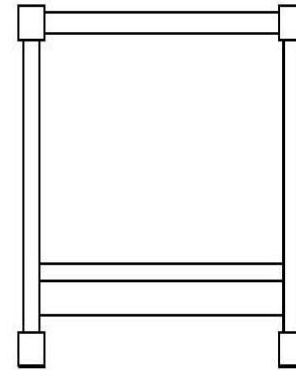


If project specific aesthetic requirements warrant the use of truss configurations not included in the standard configurations depicted in PPM Figure 8.7.2 (shown above), the EOR can specify additional truss configurations. However, a minimum of two steel truss pedestrian bridge producers shall be capable of satisfying the aesthetic requirements.

Aesthetic Options (Cont.)



*TYPE 1
(THROUGH TRUSS)*



*TYPE 2
(BOX TRUSS)*

After Bid

Prior to fabrication the Contractor's EOR shall submit signed and sealed superstructure shop drawings, technical specifications, and design calculations to the project Engineer of Record for review and approval.

*Design Up-date
Training
April 18, 2012*

Thomas A. Andres P.E.
Assist. State Structures
Design Engineer

**THANKS FOR YOUR
ATTENTION!!!**

***Design Up-date
Training
April 18, 2012***

Thomas A. Andres P.E.
Assist. State Structures
Design Engineer

