



Florida Department of
TRANSPORTATION



**Contractor Quality Control (QC) Plans
Construction Academy
2026**



Contractor QC Plan

Does it have to be produced
at a facility under the
Aggregate Control Program or
QC Program?



Contractor QC Plan

SECTION 105 CONTRACTOR QUALITY CONTROL GENERAL REQUIREMENTS

105-1 General.

105-1.1 Quality Control Documentation:

105-1.1.1 Submission of Materials Certification and Reporting Test Results:

Submit certifications prior to placement of materials. Report test results at completion of the test and meet the requirements of the applicable Specifications.

105-1.1.2 Databases: Obtain access to the Department's databases prior to testing and material placement. Database access information is available through the Department's website. Enter all required and specified documentation and test results into the Department's databases.

105-1.1.3 Worksheets: Make available to the Department, when requested, worksheets used for collecting test information. Ensure the worksheets at a minimum contain the



Contractor QC Plan

105-3 Quality Control Program.

Certain operations require personnel with specific qualifications. Certain materials require production under an approved Quality Control (QC) Plan to ensure that these materials meet the requirements of the Contract Documents. Applicable materials include hot mix asphalt, portland cement concrete (structural), earthwork, cementitious materials, timber, steel and miscellaneous metals, galvanized metal products, prestressed and/or precast concrete products, drainage products, and fiber reinforced polymer products. For all applicable materials included in the Contract, submit a QC Plan prepared in accordance with the requirements of this Section to the Engineer. Do not incorporate any of these materials into the project prior to the Engineer's approval of the QC Plan.

Steel and Miscellaneous Metal products, including aluminum, are defined as the metal components of bridges, including pedestrian and moveable bridges, overhead and cantilevered sign supports, ladders and platforms, bearings, end wall grates, roadway gratings, drainage items, expansion joints, roadway decking, shear connectors, handrails, galvanized products, fencing, guardrail, light poles, high mast light poles, standard mast arm assemblies and Monotube assemblies, stay in-place forms, casing pipe, strain poles, fasteners, connectors and other hardware.



Contractor QC Plan

105-4 Producer Quality Control Program.

105-4.1 General: When accreditation or certification is required, make supporting documents from the two previous inspections performed by the accrediting or certifying agency available to the Department upon request.

Obtain Department approval prior to beginning production. Meet and maintain the approved Producer Quality Control Program requirements at all times. Production of these products without the Department's prior acceptance of the Producer Quality Control Program may result in rejection of the products. Continued approval will be subject to satisfactory results from Department evaluations, including the Independent Assurance program. In cases of non-compliance with the accepted Producer Quality Control Program, identify all affected material and do not incorporate or supply to the Department projects. The following conditions may result in suspension of a Producer Quality Control Program:



105-5 Contractor Quality Control (QC) Plan.

105-5.1 General: Submit the Contractor QC Plan in the Department's database seven days prior to beginning work on any QC material as defined in this Section. The QC Plan may be submitted as a whole or in portions for the work related to the Contract.

Update the QC Plan at least five working days prior to the implementation of any changes.

If at any time the Work is not in compliance with the Contract Documents, the Engineer may suspend operations in accordance with 8-6.1.

105-5.2 Personnel Qualification: Submit the Training Identification Numbers for all technicians performing sampling, testing and inspection for field tests. Include employed and subcontracted technicians.

105-5.3 Production Facilities: Identify the producers of materials listed in 105-4.4 for the project. Include the Department's facility ID number as part of the identification. All producers must have accepted Producer's Quality Control Program and be listed on the Department's Production Facility Listing.

105-5.3.1 Structural Concrete Mix Designs: Identify the approved structural concrete mix designs for each structural concrete production facility for review and approval by the Engineer. Do not begin work on the material without the Engineer's approval. The Engineer will review and respond within five calendar days of submittal.

105-5.4 Testing Laboratories: Identify the laboratories performing testing. Ensure that the testing laboratories comply with the Laboratory Qualification Program requirements of this Section.



Contractor QC Plan

**QC Program
Material**

Producer

**Delivered
to the
project**

Contractor



Contractor QC Plan

Precast Pipe

PI-XX plant

**Delivered to
the project**

Stored on site
Installed



Contractor QC Plan

105-3 Quality Control Program.

Certain operations require personnel with specific qualifications. Certain materials require production under an approved Quality Control (QC) Plan to ensure that these materials meet the requirements of the Contract Documents. Applicable materials include hot mix asphalt, portland cement concrete (structural), earthwork, cementitious materials, timber, steel and miscellaneous metals, galvanized metal products, prestressed and/or precast concrete products, drainage products, and fiber reinforced polymer products. For all applicable materials included in the Contract, submit a QC Plan prepared in accordance with the requirements of this Section to the Engineer. Do not incorporate any of these materials into the project prior to the Engineer's approval of the QC Plan.

Steel and Miscellaneous Metal products, including aluminum, are defined as the metal components of bridges, including pedestrian and moveable bridges, overhead and cantilevered sign supports, ladders and platforms, bearings, end wall grates, roadway gratings, drainage items, expansion joints, roadway decking, shear connectors, handrails, galvanized products, fencing, guardrail, light poles, high mast light poles, standard mast arm assemblies and Monotube assemblies, stay in-place forms, casing pipe, strain poles, fasteners, connectors and other hardware.

July 30, 2024



MATERIALS BULLETIN NO. 24-02

DCE MEMORADUM NO. 24-04

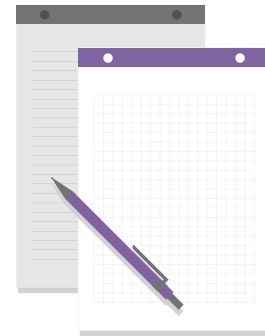
(FHWA Approval: 07/30/2024)

SUBJECT: REVISED PROCUREMENT AND CONTRACTOR'S QUALITY CONTROL PLAN REQUIREMENTS OF SPECIFIC STRUCTURAL MATERIALS FOR PROJECTS LET AFTER JULY 1, 2024

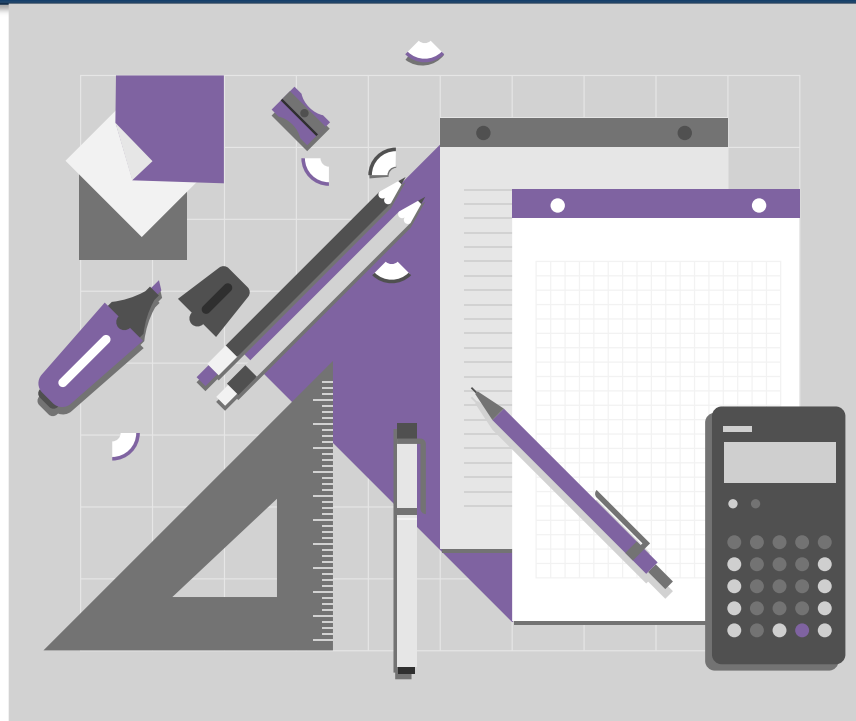
- Aluminum Light Poles
- Steel Mast Lighting (High Mast Lighting, Conventional Lighting)
- Steel Railing
- Aluminum Railing
- Drainage (Welded gratings, inlets, frames)
- Drainage (Cast manhole, grating, inlets, frames)
- Coated Steel Fence (Aluminized, PVC, Powder)
- Galvanizing
- Powder Coating
- Stairs
- Stay-In-Place Forms (with Polymer coating)
- Stay-In-Place Forms (without Polymer coating)
- Laminated Bearing Pads
- Ancillary Bearing Pads
- Steel Mast Arm
- Steel Strain Pole
- Steel CCTV Pole
- Aluminum J-Arms

Contractor QC Plan

- If you don't have any of these materials on the contract, do you need a Contractor QC plan?
- Do you need a QC Manager?



Contractor QC Plan



Contractor QC Plan Exercise



Contractor QC Plan

- What does the Contractor do?

105-5 Contractor Quality Control (QC) Plan.

105-5.1 General: Submit the Contractor QC Plan in the Department's database **seven** days prior to beginning work on any QC material as defined in this Section. The QC Plan may be submitted as a whole or in portions for the work related to the Contract.

Update the QC Plan at least **five** working days prior to the implementation of any changes.

If at any time the Work is not in compliance with the Contract Documents, the Engineer may suspend operations in accordance with 8-6.1.



Contractor QC Plan

- What does the Contractor do?

Create New Contractor QC Plan

Contract: T6543: CRS CONTRACTS [OHLA USA, IN] *

Project(s):

- 441836-1-52-01: SR 93/I-75 RAMPS AT NW 138 STREET
- 441836-1-52-02: SR 93/I-75 RAMPS AT NW 138 STREET
- 441836-1-5A-01: SR 93/I-75 RAMPS AT NW 138 STREET

Company: ABC Roads and Bridges, Inc.

Material Types: Earthwork *

7 Days

Create



Contractor QC Plan

• \

105-5

days p
submit

change

Engine

Earthwork

Technicians [0]

No Technicians have been set up

Labs [0]

No results found

Production Facilities [0]

No Production Facilities have been set up for this Material Type

se seven
Plan may be
ation of any
ents, the



Contractor QC Plan

• What does the Contractor do?

Update

Company
ABC Roads and Bridges, Inc.

Material Types
Earthwork x Asphalt x

Save

Asphalt

Technicians [0]

Labs [0]

Production Facilities [0]

even

may be

of any

, the



Contractor QC Plan

- What does the Contractor do?

[Update Status](#) [Update](#) [Copy Plan](#) [View](#)

[Create Addendum for Structural Concrete](#)

5 days

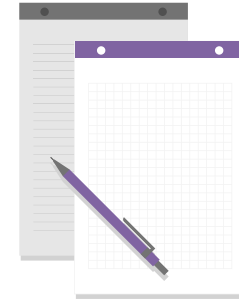
Production Facilities [1]

Production Facility	City	Status
26-990 - ABC Roads and Bridges, Inc.	Hometown, FLORIDA	QC Plan Accepted for Structural Concrete [5/3/2022]

Mix Design	Category	Environment Code	Intended Use	Material Availability	Program Maintenance User Reviewed
99-9001 [Approved]	Class II (3400 PSI) / Conventional			Is Available	Yes
99-9001-01 [Approved]	Class IV (5500 PSI) / Conventional			No	Added
99-9002 [Approved]	Class IV (5500 PSI) / Conventional			No	Added

Contractor QC Plan

- What does the PA do?
 - Are all materials included?
 - They don't all have to be there at the beginning
 - Time frames apply to each material type, not the Contractor QC Plan entry





Contractor QC Plan

Topic No. 700-000-000
Construction Project Administration Manual
Preconstruction Activities

Effective: July 23, 2002
Revised: December 2, 2021

Section 3.3

CONTRACTOR'S QUALITY CONTROL PLAN

3.3.1 Purpose

This section describes the review and approval process of the ***Contractor's Quality Control Plan (QCP)*** when required per ***Contract Documents***. This section also describes the process of suspending Contractor's work due to inadequate Quality Control (QC) Operations.



Contractor QC Plan

(A) Resident Level Responsibilities

The PA shall review the **Contractor's QCP** to ensure it is correct and complete using the checklist provided as a guide in [Attachment 3.3-1, Quality Control Plan Review Checklist](#). All QC Program materials on the contract must be included in the Contractor's QCP prior to material being produced for the contract. Each QC Program material must have at least one production facility listed as the source of the material. Each production facility must have a **Producer's QCP** in acceptable status prior to material being produced for the contract. MAC will update the information with any status change to a technician, laboratory, production facility, or concrete mix design and will notify the PA of any production facility status changes.



Contractor QC Plan

Topic No. 700-000-000
Construction Project Administration Manual
Preconstruction Activities

Effective: July 23, 2002
Revised: December 2, 2021

Attachment 3.3-1 Quality Control Plan Review Checklist

QCP Item	Y	N	N/A
105-5.2 Personnel Qualifications			
Ensure all qualified personnel are listed with Technician Identification Number (TIN) for each qualification. The PA will review with the QC Manager any qualifications designated as anything other than qualified.			
Bridge Personnel			
The PA will confirm the bridge personnel qualifications, if applicable.			
Post Tensioning Level I			
Post Tensioning Level II			
Grouting Technician Level I			



Contractor QC Plan

- PA Reviews and Approves (accepts)
 - Hot mix Asphalt, Earthwork
 - Structural Concrete
 - Production Facilities with mix designs
- PA Reviews (no MAC approval button)
 - All other Material Types

Update Status

Accept Asphalt

Reject Asphalt



Contractor QC Plan

- You may see “bad” statuses
 - You can accept a material with flagged entries
 - Production Facilities
 - Technicians
 - **Labs**



Contractor QC Plan

Asphalt

Technicians [4]

Labs [2]

Production Facilities [1]

Production Facility

[A0990 - ABC Roads and Bridges, Inc.](#)

City

Hometown, FLORIDA

Status

QC Plan Suspended for Asphalt [2/5/2024]



Contractor QC Plan

Asphalt (Addendum 2)

Technicians [10]

TIN/Name	Qualification Status	Expiration Date
Asphalt Paving Level I		
Eduardo Delgado [38288]	Qualified	5/1/2028
Julio Leganoa [33581]	Qualified	6/30/2027
Francisco Escobar [29816]	Qualified	9/26/2027
Jose Rodriguez [66998]	Qualified	5/1/2028
Carlos Guillen [35390]	Qualified	2/7/2029
Hernan Tortolero [1000000672]	Qualified	2/17/2030
Asphalt Paving Level II		
Julio Leganoa [33581]	Qualified	6/30/2027
Francisco Escobar [29816]	Qualified	9/26/2027
Carlos Guillen [35390]	Qualified	2/7/2029
John Mcdoe [54154]	Not Qualified	



Contractor QC Plan

Asphalt

Technicians [4]

Labs [2]

Lab	City	Lab Status
A0990 - ABC Roads and Bridges, Inc.	Hometown, FLORIDA	Suspended
A0992 - ABC Roads and Bridges, Inc.	Hometown, FLORIDA	Qualified



Contractor QC Plan

- Lab Status is not an indicator if the lab has the test methods for the material

Structural Concrete		
Technicians [2]		
Labs [2]		
Lab	City	Lab Status
I09901 - ABC Roads and Bridges, Inc.	Hometown, FLORIDA	Qualified
I09903 - ABC Roads and Bridges, Inc.	Hometown, FLORIDA	Qualified

Doesn't mean it's a qualified "concrete" lab



Contractor QC Plan

Lab

Active Labs & Inspections

Active Labs and Inspections Report

[Active Labs per Project](#)

Summary of the labs identified on sample header information for a specific project or projects.

Aggregate Products Few Samples

Report of Aggregate Mines with fewer than the specified number of samples since a specified date.

[Bearing Pad Lab Report](#)

This report is similar to the Qualified Labs Report but only shows Bearing Pad Labs (FM5-598).

[Contractor QCP Lab Check](#)

Check of labs for qualification in material types

[FRP Lab Report](#)

This report shows labs that are certified to test Fiber Reinforced Polymer (FRP) Reinforcing Bars.

[Invoice Lab Status Report](#)

Invoice Lab Status Report

[QC Lab Noncomparison \(C39\)](#)

This report shows all of the non-comparisons for concrete compressive strength ranked least to most.

[Qualified Labs Report](#)

Listing of Qualified Labs by District and/or Category


Test Turnaround Time

Test Turnaround Time Report.



Florida Department of TRANSPORTATION



		Contractor QCP Lab Check	
FDOT State Materials 5007 NE 39th Ave Gainesville, FL 32609 (352)955-6600			

Lab

Asphalt

Active Labs

Active Lab

Aggregate

Bearing P

Contractor

FRP Lab F

Invoice La

QC Lab N

Qualified L

Test Turnar

Lab ID:A0	Lab Status:Qualified	Suitable for Asphalt : YES	Test status
AASHTOT312 - Gyration Compaction			Valid
FM1-T030 - Mechanical Analysis of Extracted Aggregate			Valid
FM1-T166 - Bulk Specific Gravity of Compacted Hot Mix Asphalt (HMA) Specimens			Valid
FM1-T209 - Maximum Specific Gravity of Asphalt Paving Mixtures			Valid
FM5-563 - Quantitative Determination of Asphalt Content from Asphalt Paving Mixtures by the Ignition			Valid
Lab ID:A0	Lab Status:Qualified	Suitable for Asphalt : YES	Test status
AASHTOT312 - Gyration Compaction			Valid
FM1-T030 - Mechanical Analysis of Extracted Aggregate			Valid
FM1-T166 - Bulk Specific Gravity of Compacted Hot Mix Asphalt (HMA) Specimens			Valid
FM1-T209 - Maximum Specific Gravity of Asphalt Paving Mixtures			Valid
FM5-563 - Quantitative Determination of Asphalt Content from Asphalt Paving Mixtures by the Ignition			Valid
Lab ID:A0	Lab Status:Qualified	Suitable for Asphalt : YES	Test status
AASHTOT312 - Gyration Compaction			Valid
FM1-T030 - Mechanical Analysis of Extracted Aggregate			Valid
FM1-T166 - Bulk Specific Gravity of Compacted Hot Mix Asphalt (HMA) Specimens			Valid
FM1-T209 - Maximum Specific Gravity of Asphalt Paving Mixtures			Valid
FM5-563 - Quantitative Determination of Asphalt Content from Asphalt Paving Mixtures by the Ignition			Valid



or projects.
a specified
s (FM5-598).
reinforcing Bars.
nked least to



Contractor QC Plan

Lab ID:	Lab Status:	Suitable for Earthwork :	Test status
107	Qualified	NO	
AASHTOT267 - Determination of Organic Content in Soils by Loss on Ignition			Valid
AASHTOT27 - Sieve Analysis of Fine and Coarse Aggregates			Valid
AASHTOT88 - Particle Size Analysis of Soils			Valid
AASHTOT89 - Determining the Liquid Limit of Soils			Inactive
AASHTOT90 - Plastic Limit and Plasticity Index of Soils			Suspended
AASHTOT99 - Moisture-Density Relations of Soils Using a 2.5-kg (5.5-lb) Rammer and a 305-mm (12-in.) Drop			Valid
FM1-T011 - Total Amount of Material Finer Than 0.075 mm (No. 200) Sieve in Aggregate			Valid
FM1-T180 - Moisture Density Relations of Soils Using a 10-lb. (4.54kg) Rammer and an 18-in. (457mm) Drop			Valid
FM5-515 - Limerock Bearing Ratio			Valid





Contractor QC Plan

Concrete				
Lab ID: I050	Lab Status: Qualified	Suitable for Concrete : YES	Test status	End treatment
ASTMC1231 - Use of Unbonded Caps in Determination of Compressive Strength of Hardened Concrete Cylinders			Valid	Unbonded Caps
ASTMC39 - Compressive Strength of Cylindrical Concrete Specimens			Valid	
ASTMC511 - Moist Curing Room			Valid	
ASTMC617 - Capping Cylindrical Concrete Specimens			Valid	Sulfur Mortar
Lab ID: I07	Lab Status: Qualified	Suitable for Concrete : NO	Test status	End treatment
ASTMC1231 - Use of Unbonded Caps in Determination of Compressive Strength of Hardened Concrete Cylinders			Valid	Unbonded Caps
ASTMC39 - Compressive Strength of Cylindrical Concrete Specimens			Valid	
ASTMC511 - Moist Curing Room			Not Assigned	
ASTMC617 - Capping Cylindrical Concrete Specimens			Valid	Sulfur Mortar





Contractor QC Plan

- What does “Reject” do?

[Update Status](#)

[View for Print](#)

[Reject Asphalt \(Addendum 11\)](#)

[Reject Earthwork \(Addendum 9\)](#)

[Reject Structural Concrete \(Addendum 11\)](#)

- Just don't accept it until you're satisfied
- What about suspensions?
 - CPAM 3.3 – Suspend QC ***Operations***



Contractor QC Plan

- Listed on the Contractor QC plan?
 - Steel Rebar
 - Fiber Reinforced Polymer Rebar
 - Pull and junction boxes
 - Retaining wall panels
 - Barrier wall



Contractor QC Plan

- Listed on the Contractor QC plan?
 - Riprap
 - Base Material
 - Cathodic Protection
 - Aluminum Light Poles
 - Guardrail
 - Flexible Pipe



Contractor QC Plan

- Can a PA suspend QC Operations at an asphalt plant?



Contractor QC Plan

15-3 [redacted] NC

CLEARWATER, FLORIDA

QC Plan Accepted for Structural Concrete [2/7/2019]

Mix Design	Category	Environment Code	Intended Use	Material Availability	Program Maintenance User Reviewed
01-1411-02 [Approved]	Class I (3000 PSI) / Conventional	Extremely Aggressive	CL I STRUCTURAL	Is Available	Yes
01-1413-02 [Approved]	Class II (3400 PSI) / Conventional	Extremely Aggressive	CL II	Is Available	Yes
01-1429-02/NC(5:15) [Approved]	Class IV Drilled Shaft (4000 PSI) / Conventional	Extremely Aggressive	Drilled Shaft	Is Available	Yes
01-1454 [Approved]	Class II (3400 PSI) / Conventional	Extremely Aggressive	CL II REG	Is Available	Yes
01-1429-02/SC(6:45) [Approved]	Class IV Drilled Shaft (4000 PSI) / Conventional	Extremely Aggressive	Drilled Shaft	Is Available	Yes
01-1482 [Approved]	Class I (3000 PSI) / Conventional	Extremely Aggressive	CL I REG	Is Available	Yes
01-1457/SC(6:00) [Approved]	Class IV Drilled Shaft (4000 PSI) / Conventional	Extremely Aggressive	Drilled Shaft	Is Available	Yes
01-1457/NC(5:15) [Approved]	Class IV Drilled Shaft (4000 PSI) / Conventional	Extremely Aggressive	Drilled Shaft	Is Available	Yes

Showing 1 to 8 of 8



Contractor QC Plan

15-3 [redacted] NC

CLEARWATER, FLORIDA

QC Plan Accepted for Structural Concrete [2/7/2019]

Mix Design	Category	Environment Code	Intended Use	Material Availability	Program Maintenance User Reviewed
01-1411-02 [Approved]	Class I (3000 PSI) / Conventional	Extremely Aggressive	CL I STRUCTURAL	Is Available	Yes
01-1413-02 [Approved]	Class II (3400 PSI) / Conventional	Extremely Aggressive	CL II	Is Available	Yes
01-1429-02/NC(5:15) [Approved]	Class IV Drilled Shaft (4000 PSI) / Conventional	Extremely Aggressive	Drilled Shaft	Is Available	Yes
01-1454 [Approved]	Class II (3400 PSI) / Conventional	Extremely Aggressive	CL II REG	Is Available	Yes
01-1429-02/SC(6:45) [Approved]	Class IV Drilled Shaft (4000 PSI) / Conventional	Extremely Aggressive	Drilled Shaft	Is Available	Yes
01-1482 [Approved]	Class I (3000 PSI) / Conventional	Extremely Aggressive	CL I REG	Is Available	Yes
01-1457/SC(6:00) [Approved]	Class IV Drilled Shaft (4000 PSI) / Conventional	Extremely Aggressive	Drilled Shaft	Is Available	Yes
01-1457/NC(5:15) [Approved]	Class IV Drilled Shaft (4000 PSI) / Conventional	Extremely Aggressive	Drilled Shaft	Is Available	Yes

Showing 1 to 8 of 8

Mix Design Number	Request Number	Mix Design Type	Spec Version
01-1411-02	00027353	Concrete	346 - Struct
Current Status	Status Date		
Approved	8/10/2020		



Contractor QC Plan

15-3 [redacted] NC

CLEARWATER, FLORIDA

QC Plan Accepted for Structural Concrete [2/7/2019]

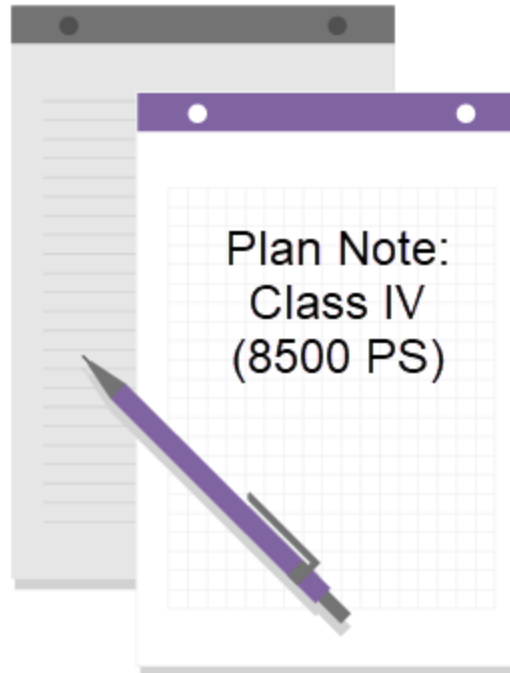


Mix Design	Category	Environment Code	Intended Use	Material Availability	Program Maintenance User Reviewed
01-1411-02 [Approved]	Class I (3000 PSI) / Conventional	Extremely Aggressive	CL I STRUCTURAL	Is Available	Yes
01-1413-02 [Approved]	Class II (3400 PSI) / Conventional	Extremely Aggressive	CL II	Is Available	Yes
01-1429-02/NC(5:15) [Approved]	Class IV Drilled Shaft (4000 PSI) / Conventional	Extremely Aggressive	Drilled Shaft	Is Available	Yes
01-1454 [Approved]	Class II (3400 PSI) / Conventional	Extremely Aggressive	CL II REG	Is Available	Yes
01-1429-02/SC(6:45) [Approved]	Class IV Drilled Shaft (4000 PSI) / Conventional	Extremely Aggressive	Drilled Shaft	Is Available	Yes
01-1482 [Approved]	Class I (3000 PSI) / Conventional	Extremely Aggressive	CL I REG	Is Available	Yes
01-1457/SC(6:00) [Approved]	Class IV Drilled Shaft (4000 PSI) / Conventional	Extremely Aggressive	Drilled Shaft	Is Available	Yes
01-1457/NC(5:15) [Approved]	Class IV Drilled Shaft (4000 PSI) / Conventional	Extremely Aggressive	Drilled Shaft	Is Available	Yes

Showing 1 to 8 of 8



Contractor QC Plan



Contractor QC Plan





Florida Department of
TRANSPORTATION



Contractor QC Plan





Contractor QC Plan

Notification of Placing Order – Section 105

105-1.2.3 Notification of Placing Order: Order materials sufficiently in advance of their incorporation in the work to allow time for sampling, testing and inspection. Notify the Engineer prior to placing orders for materials.

Submit to the Engineer a fabrication schedule for all items requiring commercial inspection at least 30 days before beginning fabrication. These items include steel bridge components, moveable bridge components, pedestrian bridges, castings, forgings, structures erected either partially or completely over the travelled roadway or mounted on bridges as overhead traffic signs (some of these may be further classified as cantilevered, overhead trusses, or monotubes) or any other item identified as an item requiring commercial inspection in the Contract Documents.



Contractor QC Plan

Steel and Miscellaneous Metal products, including aluminum, are defined as the metal components of bridges, including pedestrian and moveable bridges, overhead and cantilevered sign supports, ladders and platforms, bearings, end wall grates, roadway gratings, drainage items, expansion joints, roadway decking, shear connectors, handrails, galvanized products, fencing, guardrail, light poles, high mast light poles, standard mast arm assemblies and Monotube assemblies, stay in-place forms, casing pipe, strain poles, fasteners, connectors and other hardware.

Submit to the Engineer a fabrication schedule for all items requiring commercial inspection at least 30 days before beginning fabrication. These items include steel bridge components, moveable bridge components, pedestrian bridges, castings, forgings, structures erected either partially or completely over the travelled roadway or mounted on bridges as overhead traffic signs (some of these may be further classified as cantilevered, overhead trusses, or monotubes) or any other item identified as an item requiring commercial inspection in the Contract Documents.



Florida Department of TRANSPORTATION



Contractor QC Plan





Contractor QC Plan

Notification of Placing Order – Section 105

Commercial Inspection

How does this tab get on the CQCP?

What's on the tab?

3 questions – Contractor answers 1

PA answers 2 & 3



Contractor QC Plan

Notification of Placing Order – Section 105

Commercial Inspection

Update [Close]

Company
QUINN CONSTRUCTION, INC. [X]

Material Types

Asphalt [X] Earthwork [X] Guardrail [X] Incidental Precast Products [X]
Precast Drainage Structures [X] Precast Pipe [X] Prestressed Concrete Products [X]

[Dropdown Menu]
Overhead Gantry
Overhead Monotube
Overhead Span/Truss
Painting
Plastic Pipe

[Save]



Contractor QC Plan

- 1st question - review to ensure the Contractor responds
- If yes, items that require commercial inspection are listed
- Make sure the fabricator(s) are listed

Are there steel and/or miscellaneous metal items on this project that require commercial inspection per section 105 Notification of Placing Order? ?

Yes ▼

Inspection Items

- 460 - Structural Steel & Misc Metal - Bascule (New) Bridge & Components
- 460 - Structural Steel & Misc Metal - Bascule Bridge Rehab & Components
- 460 - Structural Steel & Misc Metal - Gantry
- 460 - Structural Steel & Misc Metal - Pedestrian Bridge
- 460 - Structural Steel & Misc Metal - Steel (New) Bridge & Components
- 460 - Structural Steel & Misc Metal - Steel Bridge Rehab & Components
- 465 - Movable Bridges - Movable (New) Bridge & Components
- 465 - Movable Bridges - Movable Bridge Rehab & Components
- 700 - Highway Signing - Overhead Truss Cantilever
- 700 - Highway Signing - Overhead Truss Monotube
- 700 - Highway Signing - Overhead Truss Span
- 700 - Highway Signing - Sign Panel Overhead Mount
- 781 - ITS System Components - Cantilevered Sign
- Other as required by Contract Documents



Save

QC Manager

Show All Material Addendums

Overhead Cantilever

Production Facilities [1]

Structural Concrete (Addendum 3)

Commercial Inspection

Are there steel and/or miscellaneous metal items on this project that require commercial inspection per section 707.04, Florida Statute?

Yes



Items to be Inspected

Component

700 - Highway Signing

Overhead Truss Cantilever

700 - Highway Signing

Overhead Truss Span

700 - Highway Signing

Sign Panel Overhead Mount

781 - ITS System Components

Cantilevered Sign

MC Review
MOA



Contractor QC Plan

- 3rd question – are there items that will not be commercially inspected?
 - If yes, a reminder is placed on the Contractor QC Plan



Are there steel and miscellaneous metal items on the project that will NOT have commercial inspection?

Yes ●

The Contractor should collect certified test reports and submit them to the PA on items not receiving commercial inspection.



Contractor QC Plan

- 3rd question – are there items that will not be commercially inspected?
 - High Mast Light Pole

715-18 Method of Measurement.

The quantities to be paid for will be as follows, completed and accepted:

7. High Mast Lighting Pole Complete: The Contract unit price will include the pole, luminaires with lamps, lowering system, breakers and anchor bolts with lock nuts and washers, and foundation as indicated in the Plans and Standard Plans.



Contractor QC Plan

- 3rd question – are there items that will not be commercially inspected?

962-7 High-Strength Bolts, Nuts, Washers and Direct-Tension-Indicator (DTI) Devices.

Provide high-strength bolts, nuts, washers and DTI devices in accordance with this Section and Table 962-7. High-strength bolts shall have identifying marks meeting ASTM F3125 Table 2 and ASTM A563. High-strength bolted assemblies shall be made of similar coating composition. When galvanizing is specified in the contract documents, provide galvanizing in accordance with 962-11.3.2. Bolts meeting the requirements of ASTM F3125 Grade A490, washers meeting the requirements of ASTM F844, and nuts meeting the requirements of ASTM A194 or AASHTO M 292 may be used with the Engineer's approval.



Florida Department of TRANSPORTATION



Contractor QC Plan

Welcome to the MAC Application

The Department's official system of record for Quality Assurance Procedure for Construction data.

Want to know more about MAC? Visit the SMO MAC information website at <https://www.fdot.gov/materials/mac/default.shtm>.

Production Facilities and Laboratories Listings can be generated from MAC by selecting the Reports menu option and selecting the specific production facility or laboratory listing. You do not need MAC access or to log into MAC to generate the reports. Just select the Reports menu option to be taken to the Reports screen.

Access


How to access MAC

- Internet Subscriber Account (ISA) Setup
- ISA Password Reset
- Updating an Existing ISA (company, email, etc.)
- FDOT User Id Automated Access Request Form (AARF) Instructions
- For both ISAs and FDOT user id requests, you will need to know what roles you wish to have assigned. Visit [MAC Role Summary](#).
- FDOT District Map

Database Dashboard

MAC Statistics

- Number of Samples - 1,817,910
- Number of Projects Certified - 5,597
- Number of Projects with samples - 4,748
- Number of Projects with ERS Projects - 877



News

Materials Bulletins

Updates to CTQP TIN format
Implementation of Trainee Identification Number (TIN) for CTQP Technicians
Updates to QC program Materials and impact on Contractor QC Plan
Materials Bulletin 24-02

Spec Mandated changes

State Materials Office is developing the following updates:

- Removing Material Types (MB 24-02)
- Updating Contractor QC Plan for non-OQC structural concrete
- Adding Sample Level for non-OQC structural concrete
- Updating Conflict of Interest
- Other related changes

Technical Support and Contacts

Contacts

List of MAC Contacts

Steel and Miscellaneous Metals

Email the Steel and Miscellaneous Metals - Commercial Inspection team at SM-StructuresCI@dot.state.fl.us

Product Evaluation - APL / PATH

APL (PATH)
Email the Product Evaluation Team at Product.Evaluation@dot.state.fl.us

Ride Acceptance / Laser Profile

For Laser Profile Ride Acceptance request samples under MAC Material 330, please note:

- The roadway should be ready, clean, open to traffic, and free of any construction equipment, etc. at the time of testing.
- The laser profiling MAC login request should be submitted at least 2 weeks prior to testing.

Detailed instructions can be found at [Ride Acceptance for Laser Profile Sample Quick Sheet](#).
Email the Ride Acceptance Team at SM-LaserAcceptance@dot.state.fl.us.



Technical Support and Contacts

Contacts

List of MAC Contacts

Steel and Miscellaneous Metals

Email the Steel and Miscellaneous Metals – Commercial Inspection team at SM-StructuresCI@dot.state.fl.us

Product Evaluation – APL / PATH

APL (PATH)

Email the Product Evaluation Team at Product.Evaluation@dot.state.fl.us

Ride Acceptance / Laser Profile

For Laser Profile Ride Acceptance request samples under MAC Material 330, please note:

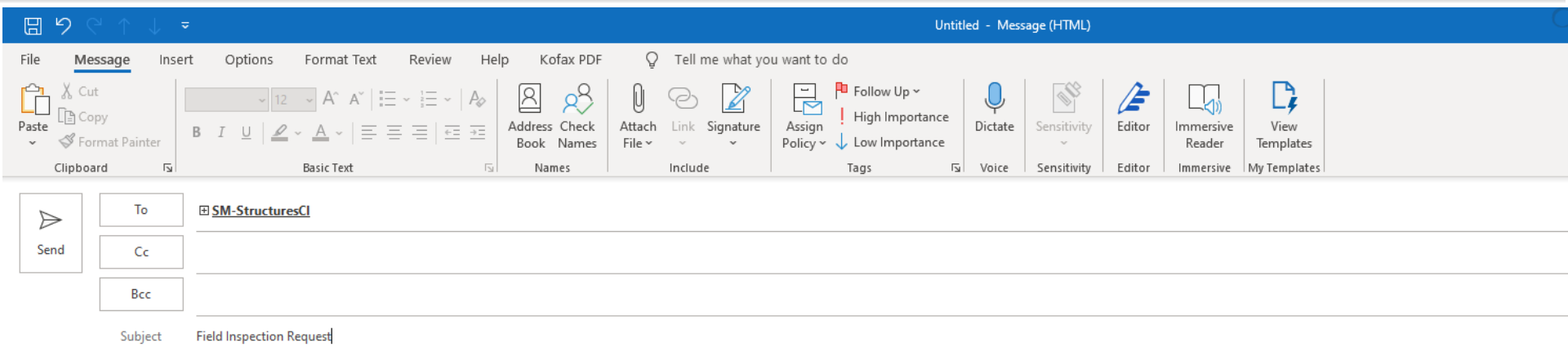
- The roadway should be ready, clean, open to traffic, and free of any construction equipment, etc. at the time of testing.
- The laser profiling MAC login request should be submitted at least 2 weeks prior to testing.

Detailed instructions can be found at [Ride Acceptance for Laser Profile Sample Quick Sheet](#).

Email the Ride Acceptance Team at SM-LaserAcceptance@dot.state.fl.us.



Technical Support and Contacts



Call us or email us if you have any questions. Thank you!
Email the Product Evaluation Team at Product.Evaluation@dot.state.fl.us

Ride Acceptance / Laser Profile

For Laser Profile Ride Acceptance request samples under MAC Material 330, please note:

- The roadway should be ready, clean, open to traffic, and free of any construction equipment, etc. at the time of testing.
- The laser profiling MAC login request should be submitted at least 2 weeks prior to testing.

Detailed instructions can be found at [Ride Acceptance for Laser Profile Sample Quick Sheet](#).

Email the Ride Acceptance Team at SM-LaserAcceptance@dot.state.fl.us.



Contractor QC Plan

- Documents on the Contractor QC Plan

Documents [171]

	Name	Description	Date Uploaded			
1	ExtractPage1.pdf		12/8/2016	View Document	Update	Delete
2	432193-1-52-01 5-2-17.pdf		5/2/2017	View Document	Update	Delete
3	432193-1-52-01 (5-02-17).pdf		5/2/2017	View Document	Update	Delete
4	432193-1-52-01 (5-5-17) Mass.pdf		5/5/2017	View Document	Update	Delete
5	432193-1-52-01 (5-18-17) Drilled Shaft Mass.pdf		5/18/2017	View Document	Update	Delete
6	Argos.pdf		7/10/2017	View Document	Update	Delete
7	432193-1-52-01(7-11-17).pdf		7/11/2017	View Document	Update	Delete
8	432193-1-52-01 (7-12-17).pdf		7/12/2017	View Document	Update	Delete



Contractor QC Plan

- Documents on the Contractor QC Plan
 - ***No Mix Design Reports***
 - ***System administrator will delete these upon discovery***
 - Nonstructural mix design reports can be uploaded while the contract is active
 - Delete before PMCL is generated



Contractor QC Plan

10- [REDACTED], INC

[REDACTED] FLORIDA

QC Plan Accepted for Structural Concrete [7/18/2023]

Mix Design	Category	Environment Code	Intended Use	Material Availability	Program Maintenance User Reviewed
01-1437 [Approved]	Class II (3400 PSI) / Slip Form	Extremely Aggressive	CL II 3400 Slip	Is Available	Yes
01-1411-02 [Approved]	Class I (3000 PSI) / Conventional	Extremely Aggressive	CL I 3000	Is Available	Yes
01-1412-02 [Approved]	Class I Pavement (3000 PSI) / Slip-Form Paving	Extremely Aggressive	CL I 3000 Paving	Is Available	Yes
01-1413-02 [Approved]	Class II (3400 PSI) / Conventional	Extremely Aggressive	CL II 3400	Is Available	Yes
01-1414-02 [Approved]	Class II Bridge Deck (4500 PSI) / Conventional	Extremely Aggressive	CL II 4500 Deck	Is Available	Yes
01-1415-02 [Approved]	Class IV (5500 PSI) / Conventional	Extremely Aggressive	CL IV 5500	Is Available	Yes
01-1438 [Approved]	Class IV (5500 PSI) / Slip Form	Extremely Aggressive	CL IV 5500 Slip	Is Available	Yes
01-1429-02/NC(5:15) [Approved]	Class IV Drilled Shaft	Extremely	CL IV 4000 Drilled Shaft	Is Available	Yes

CONCRETE MIX DESIGN 01-1487-03

Contract Number: T7472

Plant Number: [REDACTED]
INC

Project personnel should note that there may be project specific requirements that may still need to be confirmed before the mix design can be used on the project.



Florida Department of TRANSPORTATION



Contractor QC Plan

Mix Design

[Click to Collaps](#)

[Asphalt Mix Design ShortReport \[End User Report\]](#)

Asphalt Mix Design information for Lab personnel

[Asphalt Mix Design Summary \(APW\) Excel Version](#)

Summarizes all asphalt mix design sample data for a selected project and/or mix design.



ASPHALT MIX DESIGN

SP 22-20206A

Contractor		Intended Use	Structural
Mix Type	SP-9.5	Recycled	Y
Mix Texture	Fine	Gyrations @ Ndes	75
Traffic Level	C		

Sieve	Percent Passing
1"	
3/4"	
1/2"	
3/8"	
No. 4	
No. 8	
No. 16	
No. 30	
No. 50	
No. 100	
No. 200	
Gsb	

Mix Design

[Asphalt Mix Design](#)

[Asphalt Mix Design](#)

[Click to Collapse](#)

Total Binder Content	5.7
Ign. Oven Corr. Factor	
Gmm Corr. Factor	
Mixing Temp. (Plant)	300 °F
Compaction Temp. (Roadway)	300 °F
Spread Rate @ 1"	lb/yd ²
Gmb @ Ndes	
Gmm	
Binder Type	PG 58-22

Va
VMA
VFA
P-200/Pbe
Effective Date 1/4/2022
Expiration Date 12/22/2023
Anti - Strip (%) For dosage rate, see APL.

Anti-Strip Not applicable for FC-5 Designs Containing Lime

Special Use Instructions

Anti-strip to be added. See APL for dosage rate.

Sand Source: [Florida Sand Resources](#)

Transferred from SD 21, 10159A (TL C)



Contractor QC Plan

- Documents on the Contractor QC Plan
 - *No documents with Technicians names and **OLD** TIN format*
 - *Who does this?*
 - *What should the PA do?*
 - *Why do we care?*



Contractor QC Plan

- Temporary storage for easy reference versus long-term storage and retention requirements
 - *Move to appropriate storage repository*



Contractor QC Plan

- Documents that belong in CDMS to the appropriate group and type
 - Pile Installation Plans *without Mix Designs*
 - Shop Drawings
- Certification documents reviewed by SMO to a sample
- Certification documents not reviewed by SMO to CDMS

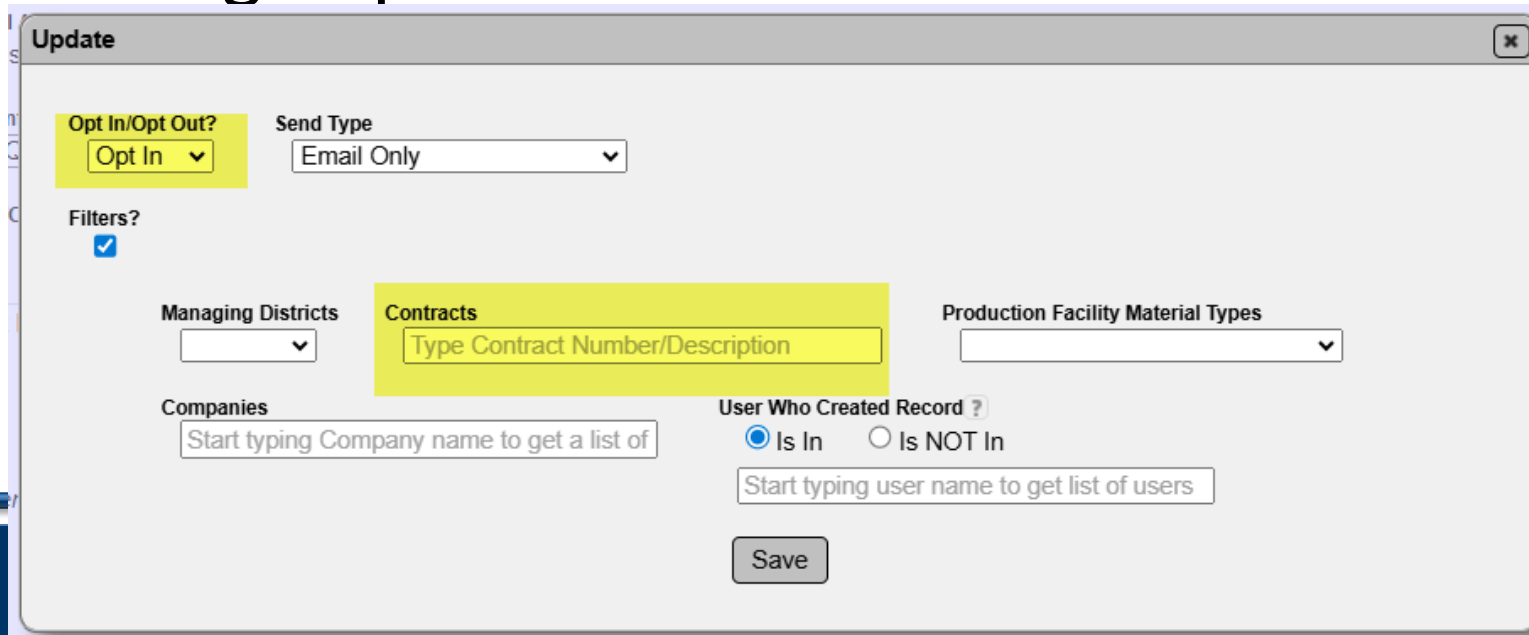


Contractor QC Plan

- System Administrator will delete any these once MC Review is designated as In Final Review
 - Assumption – these are copies and the originals are stored as appropriate

Contractor QC Plan – PA Notifications

- MAC notifications are primarily for the PA
- Sign up and add filters



The screenshot shows a web form titled "Update" with the following fields and options:

- Opt In/Opt Out?:** A dropdown menu with "Opt In" selected.
- Send Type:** A dropdown menu with "Email Only" selected.
- Filters?:** A checkbox that is checked.
- Managing Districts:** A dropdown menu.
- Contracts:** A text input field with the placeholder text "Type Contract Number/Description".
- Production Facility Material Types:** A dropdown menu.
- Companies:** A text input field with the placeholder text "Start typing Company name to get a list of".
- User Who Created Record ?:** Radio buttons for "Is In" (selected) and "Is NOT In".
- User Who Created Record ? (continued):** A text input field with the placeholder text "Start typing user name to get list of users".
- Save:** A button at the bottom center.



Contractor QC Plan – PA Notifications

- CQCP has been created
- CQCP has been submitted with Unapproved Production Facilities*
- CQCP Mix Designs No Longer Approved
- CQCP Mix Design Designated Material not Available



Contractor QC Plan – PA Notifications

- CQPC Lab or Lab Test Method has been Suspended or Closed
- CQCP Production Facility not Approved*
- CQCP Material Submitted
- CQCP Material Removed
- Commercial Inspection Updated



Contractor QC Plan



Susan Musselman, FDOT
State Materials Office

Office 352.955.6669

Cell 352.663.4461

[Susan.Musselman@dot.
state.fl.us](mailto:Susan.Musselman@dot.state.fl.us)