

FINAL ESTIMATES

STATE CONSTRUCTION OFFICE

OLIVIA TOWNSEND

CONSTRUCTION FINAL ESTIMATES ENGINEER

OLIVIA.TOWNSEND@DOT.STATE.FL.US

(850) 414-4303

SHANNON HARRIS

FINAL ESTIMATES SPECIALIST

SHANNON.HARRIS@DOT.STATE.FL.US

(850) 414-4143

TAYLOR CARLQUIST

FINAL ESTIMATES SPECIALIST

TAYLOR.CARLQUIST@DOT.STATE.FL.US

(850) 414-4252

AMANDA ULMER

FINAL ESTIMATES SPECIALIST

AMANDA.ULMER@DOT.STATE.FL.US

(850) 414-4249

OCTOBER 2025

POLL QUESTION

Have you taken the Final Estimates Level 2 Course?

- Yes
- No

POLL QUESTION

How many years of experience in FDOT Project Management do you have?

- 0-2 years
- 3-5 years
- 5-10 years
- 10-20 years
- I'm an expert!



GOALS

WHERE WE'RE GOING:

- What is Final Estimates?
- General Information
- Monthly Estimates
- Final As-Built Plans
- Final Estimate Process

POLL QUESTION

What does Final Estimates mean to you?

- Closeout Process at the end of the project
- Only applies during monthly payments
- Backup documentation throughout the project

WHAT IS FINAL ESTIMATES?

- Starts at the beginning of the project.
- Ensures that the Contractor is paid fairly for the work performed and accepted.
- Ensures that the Department has the proper documentation to justify payment to Contractor
 - Contract quantities
 - Time
 - Material acceptance
- CTQP Level 2 Qualification in Final Estimates

HOW FINAL ESTIMATES IS CALCULATED?

- **Read the Contract**
- Know the Specifications Year and Modifications to the Specifications
- Know the Contract Type – Specification 4-1
 - Conventional ♦
 - Lump Sum ♦
 - Design-Build ♦
- Know the Plans
- Know the Procedures
 - *Construction Project Administration Manual (CPAM)*
 - *Review & Administrative Manual (RAM)*

<https://www.fdot.gov/construction>
Documents and Publications > Manuals

WHAT ARE SOME OF THE CONTRACT DOCUMENTS?

- Contract
- Modifications to the Contract, such as Supplemental Agreements & Work Orders
- The Plans

<https://www.fdot.gov/programmanagement/>
Under Office Divisions > Specifications

- Standard Specifications
- Supplemental Specifications
- Developmental Specifications
- Technical Special Provisions
- Special Provisions

<https://www.fdot.gov/design>
Documents and Publications > Standard Plans

- Standard Plans

ORDER OF PRECEDENCE

Specification 5-2



WHAT ARE SOME HELPFUL RESOURCES?

- CPAM
- RAM
- CTQP Final Estimates Level II Manual ♦
- Final Estimates External Website ♦
 - Final Estimates Guidelist
- Final Estimates SharePoint Site ♦

<https://www.fdot.gov/programmanagement/>

Documents, Publications & Applications > Basis of Estimates (BOE)

- Basis of Estimates (BOE) Manual

POLL QUESTION

Which resources below are binding contract documents **for the Contractor?**

- Basis of Estimates Manual
- Construction Project Administration Manual
- Review and Administration Manual
- Final Estimates Guidelist
- None

HOW ARE PAY ITEMS PAID?

- **Plan Quantity**
 - Designer Quantity

9-3.2 Payment Based on Plan Quantity:

9-3.2.1 Error in Plan Quantity: As used in this Article, the term “substantial error” is defined as the smaller of (1) or (2) below:

1. a difference between the original plan quantity and final quantity of **more than 5%**,
2. a change in quantity which causes a change in the amount payable of **more than \$5,000.**

- **Lump Sum**
 - Same as above
 - Secondary Units are considered
- **Final Measure**
 - Certified Quantities
 - Contractor Measures & Resident Office Spot Checks
 - Final Measure
 - Resident Office Measures

UNITS OF MEASURE ASSIGNED TO PAY ITEMS

- **Units of Measure:**
 - 1 Lump Sum
 - Per Each, Each Day
 - Length - Linear Feet
 - Area - Square feet, Square Yards, Acre
 - Volume - Cubic Feet, Cubic Yards
 - Weight - Lbs, Tons
- This information is found in the Specifications under Method of Measurement ♦
- The Basis of Estimates Manual also has this information, as well as the accuracy required for each unit of measure in BOE Chapter 2.

MONTHLY ESTIMATE PROCESS

- Estimate Cut-Off Dates
 - All on Sunday
 - Typically, the 3rd Sunday
- Monday – Friday is considered Estimates Week

2023

January 15, 2023

February 19, 2023

March 19, 2023

April 16, 2023

May 14, 2023 (2nd Sunday)

June 11, 2023 (2nd Sunday)

July 16, 2023

August 20, 2023

September 17, 2023

October 15, 2023

November 12, 2023 (2nd Sunday)

December 17, 2023

SURVEY TIME

Which of the following are reasons the cutoff dates are not on the typical 3rd Sunday?

- ✓ • End of the Fiscal Year
- Dates are in the Standard Specs
- ✓ • Avoid the Thanksgiving Holidays
- ✓ • Avoid the Christmas Holidays

MONTHLY ESTIMATE PROCESS



CONTRACTOR:

Submit the following (minimum):

- **Certification of Quantities Forms, if applicable**
 - MOT, Signs, etc.
 - Striping
 - Asphalt and Bituminous Material
 - Fuel (LS/DB Only)
- **Certification Disbursement of Previous Periodic Payment to Subcontractors**
 - All estimates except the first
- **Construction Compliance with Specs & Plans**
- **Where to find this information?**
 - CPAM 5.11 and 5.14

<https://www.fdot.gov/construction>
Documents and Publications > Manuals

MONTHLY ESTIMATE PROCESS



RESIDENT OFFICE:

- **Verify Quantities are Reasonable**
 - Remember it's an Estimate not an Invoice
- **Verify the Contractor's Certifications have been filled out correctly**
 - Are forms in the proper format?

<https://pdl.fdot.gov>
Procedural Document Library
 - Are Digital Signatures Valid?
 - Have digital and wet-ink signatures been mixed?
- **Generate the Estimate in AASHTOware Project Construction (PrC)**
 - Includes Adjustments

ITEM DESCRIPTION	ITEM NUMBER	CO NBR	UN IT	Q U A N T I T I E S					UNIT PRICE	AMOUNT TO-DATE
				PLAN	PREVIOUS	THIS EST.	TO-DATE	%		
MOBILIZATION	0101 1		LS	1.000	1.000	+0.000	1.000	100	221,352.7700	221,352.77
MAINTENANCE OF TRAFFIC	0102 1		LS	1.000	0.930	+0.070	1.000	100	165,000.0000	165,000.00
WORK ZONE SIGN	0102 60		ED	14,467.000	8,884.000	+5,370.000	14,254.000	99	0.2500	3,563.50
CHANNELIZING DEVICE- TY	0102 74 1		ED	109,534.000	14,792.000	+8,778.000	23,570.000	22	0.1300	3,064.10
PES I, II, DI, VP, DRUM ARROW BOARD / ADVANCE W ARNING ARROW PANEL.	0102 76		ED	562.000	166.000	+58.000	224.000	40	5.0000	1,120.00
HIGH INTENSITY FLASHING LIGHTS, TEMP, TYPE B	0102 77		ED	1,732.000	2,130.000	+1,471.000	3,601.000	208	0.2500	900.25
TEMPORARY RETROREFLECTI VE PAVEMENT MARKER	0102 78		EA	4,750.000	9,311.000	+0.000	9,311.000	196	2.8000	26,070.80
PORTABLE CHANGEABLE MES SAGE SIGN, TEMPORARY	0102 99		ED	508.000	1,194.000	-4.000	1,190.000	234	15.0000	17,850.00
PORTABLE REGULATORY, SI GN	0102150 1		ED	644.000	392.000	+78.000	470.000	73	5.0000	2,350.00
RADAR SPEED DISPLAY UNI T	0102150 2		ED	644.000	392.000	+78.000	470.000	73	5.0000	2,350.00
SEDIMENT BARRIER	0104 10 3		LF	1,643.000	2,452.000	+0.000	2,452.000	149	2.1700	5,320.84
INLET PROTECTION SYSTEM	0104 18		EA	66.000	66.000	+0.000	66.000	100	148.7300	9,816.18
LITTER REMOVAL	0107 1		AC	3,141.510N	1,443.249	+371.911	1,815.160	58	9.0000	16,336.44
MOWING	0107 2		AC	3,141.510N	1,027.582	+0.318	1,027.900	33	31.0000	31,864.90
CLEARING & GRUBBING	0110 1 1		LS	1.000	1.000	+0.000	1.000	100	8,500.0000	8,500.00
REMOVAL OF EXISTING CON CRETE PAVEMENT	0110 4		SY	1,463.000	1,569.500	+0.500	1,570.000	107	26.0300	40,867.10
BORROW EXCAVATION, TRUC K MEASURE	0120 2 2		CY	4,374.000	3,211.000	+24.000	3,235.000	74	17.0000	54,995.00
REGULAR EXCAVATION (3-R PROJECTS ONLY)	0120 71		LS	1.000	1.000	+0.000	1.000	100	52,000.0000	52,000.00

ESTIMATE CREATED: 11/16/16

COSECT FIN. PROJ.# MANDST JOB NO.

46110 435518-1-52-01 03 -

PROG. NUMBER - 5202

F.A.P. NO. 8886871A

CONTRACTOR: F591683951003 C. W. ROBERTS CONTRACTING, INC.

STATE OF FLORIDA DEPARTMENT OF TRANSPORTATION

TRNSPORT/SITEMANAGER PAY ESTIMATE

PROGRESS EST.NO. 0001

C.C. NO. 314

PANAMA CITY CONSTRU

DESPJ11-1 PAGE 1

CONTR. TYPE: CLS CONSTR LUMP SUM

CONTRACT NO. T3595 ENGLISH

LETTING DATE 07/27/16

NO. OF JOBS ON ESTIMATE 01 / 02

ESTIMATE PERIOD END DATE: 11/13/16

S.R. NO. SR 391 IN BAY CO.

DESCRIPTION: SR 391 AIRPORT ROAD FROM SR 75 (US 231) TO HARRISON AVENUE

CONTRACTOR: F591683951003

C. W. ROBERTS CONTRACTING, INC.

TALLAHASSEE

FL

FROM COMMENCEMENT OF WORK OCT 12, 2016 TO NOV 13, 2016 INCLUSIVE

ITEM DESCRIPTION	ITEM NUMBER	CO NBR	UN IT	Q U A N T I T I E S					UNIT PRICE	AMOUNT TO-DATE
				PLAN	PREVIOUS	THIS EST.	TO-DATE	%		
LUMP SUM CONTRACT, ALTE RNATIVE BIDDING	0999 2		LS	1.000	0.000	+0.542	0.542	54	183,958.2200	99,705.36

LUMP SUM
CONTRACT
ESTIMATE

PAY ITEM ADJUSTMENTS

Types of Pay Item Adjustments

- Contract Adjustments
- Line Item Adjustments

PAY ITEM ADJUSTMENTS (CONTRACT ADJUSTMENTS)

- A+B Incentive-Disincentive
- Arbitration Orders
- Cash Retainage Withheld
- Court Orders
- Damage Recovery
- **Incentive-Disincentive**
- Liquidated Damages
- Lane Rental Incentive-Disincentive
- Liquidated Savings
- No Excuse Bonus
- Retainage (Non-system)
- Revenue Loss Penalty
- Settlement Costs

PAY ITEM ADJUSTMENTS (LINE ITEM ADJUSTMENTS)

- Asphalt Content
- Asphalt Density
- Directed Source Aggregate Price Adjust.
- Temp. Attenuator/Crash Cushion Repair
- Asphalt Sieve Failures
- **Bituminous**
- Contingency-Participating Work Order Amt.
- Contingency-Non-Part Work Order Amt.
- **Composite Pay Factor**
- Concrete Pavement Grinding Incentive
- Concrete Strength Adjustment
- **Fuel Adjustment (Diesel)**
- **Fuel Adjustment (Gasoline)**
- **Material Price Adjustment**
 - **Steel**
 - **Aluminum**
 - **PVC**
 - **Copper**
 - **Thermoplastic**
- Lost or Missing Samples
- Laser Profiler Acceptance Adjustment
- Left in Place at Reduced Pay
- Adj. for deleted work - LS jobs only
- Material Discrepancy Payment Adjustment
- Invoice Matching Adjustment
- Pavement Joint Smoothness Incentive
- Resolution Testing Costs
- Straightedge Adjustment
- Stockpiled Materials Adjustment
- Stockpiled Materials Closure
- Stockpiled Materials Initial Payment
- Substandard Item
- Thickness Adjustment

COMPONENTS OF CONTRACT PLANS SET

ROADWAY PLANS
STRUCTURES PLANSA DETAILED INDEX APPEARS ON THE
KEY SHEET OF EACH COMPONENT

INDEX OF ROADWAY PLANS

SHEET NO.	SHEET DESCRIPTION
1	KEY SHEET
2	SIGNATURE SHEET
2A	SIGNATURE SHEET
2B	SIGNATURE SHEET
2C	SIGNATURE SHEET
2D	SIGNATURE SHEET
2E	SIGNATURE SHEET
2F	SIGNATURE SHEET
3	SUMMARY OF PAY ITEMS
4	TYPICAL SECTIONS
5	SQ 1 - SQ 4
6	PROJ. NOTES, CONTROL PTS & SUM OF DR STR
7	ROADWAY PLAN
8	ROADWAY PROFILE
9	CROSS SECTIONS
10	EROSION AND SEDIMENT CONTROL PLAN
11	TRAFFIC CONTROL PLAN
12	TRAFFIC CONTROL PLAN (RAMP CLOSURE)
13	TRAFFIC CONTROL PLAN (DETOUR PLAN)
14	TRAFFIC CONTROL PLAN (PEDESTRIAN DETOUR PLAN)
15	SIGNING AND PAVEMENT MARKING PLAN
16	END PROJECT
17	END BRIDGE #720094
18	M.P. 15.569

OF REVISED INDEX DRAWINGS
X NO. 600 SHEET NO. 1 to 12 of 12

GOVERNING STANDARDS AND SPECIFICATIONS:

Florida Department of Transportation, 2015 Design Standards and revised Index Drawings as appended herein, and July 2015 Standard Specifications for Road and Bridge Construction, as amended by Contract Documents.

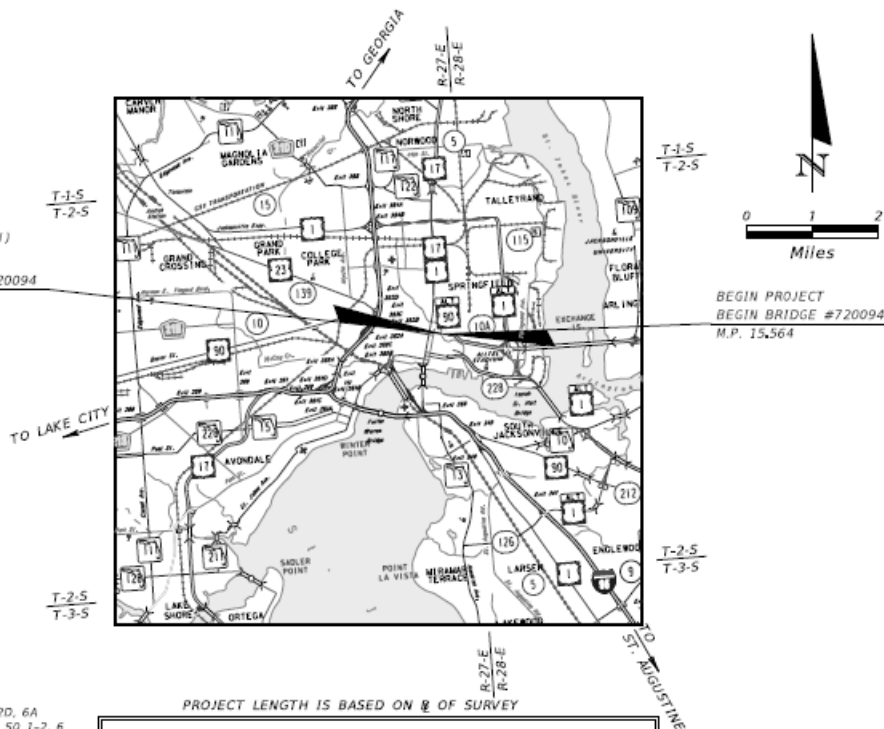
For Design Standards click on the "Design Standards" link at the following web site:
<http://www.dot.state.fl.us/rddesign/>For the Standard Specifications for Road and Bridge Construction click on the "Specifications" link at the following web site:
<http://www.dot.state.fl.us/specificationsoffice/>

REVISIONS:

1	10/22/15	ADDED SHEET NO. 2A AND REVISED STRUCTURES KEY SHEET	4/4/16	ADDED SHEET NO. 2D, 6A REVISED SHEETS 1, 5, 6, 6A, SQ-1, AND STRUCTURES KEY SHEET
2	12/22/15	ADDED SHEET NO. 2B REVISED SHEETS 7, 8 AND 9 AND REVISED STRUCTURES KEY SHEET	5/15/16	ADDED SHEET NO. 2E AND 14A REVISED SHEETS 1, 5, 6, 6A, SQ-1, SQ-2, SQ-3, SQ-4 B-12, 14, 17 REVISED STRUCTURE SHEETS B-01, B01-01, B1-15, B1-30, B1-33 - B1-36, B1-39, B1-37, AND B1-40
3	2/15/15	ADDED SHEET NO. 2C REVISED SHEETS 1, SQ 2, 6, 8-11 AND STRUCTURES KEY SHEET	9/15/16	ADDED SHEET NO. 2F REVISED SHEET 1 REVISED STRUCTURE SHEETS B-01, B1-33, B1-34, B1-35, AND B1-37

STATE OF FLORIDA
DEPARTMENT OF TRANSPORTATION
AS-BUILT PLANS FOR
CONTRACT PLANS

FINANCIAL PROJECT ID 430417-1-52-01

DUVAL COUNTY (72040)
STATE ROAD NO. SR10A

LENGTH OF PROJECT		
	LINEAR FEET	MILES
ROADWAY	0.00	0.000
BRIDGES	26.40	0.005
NET LENGTH OF PROJECT	26.40	0.005
EXCEPTIONS	0.00	0.00
GROSS LENGTH OF PROJECT	26.40	0.005

FDOT PROJECT MANAGER: ERIC SHIMER, P.E.

ROADWAY SHOP DRAWINGS
TO BE SUBMITTED TO:NATHANIEL R WILLBUR
INFRASTRUCTURE ENGINEERS, INC.
2501 ST. JOHNS BLUFF SOUTH, SUITE 103
JACKSONVILLE, FL 32246

PLANS PREPARED BY:

INFRASTRUCTURE ENGINEERS, INC.
2501 ST. JOHNS BLUFF SOUTH, SUITE 103
JACKSONVILLE, FL 32246
PHONE: (407) 957-1660
FAX: (407) 957-8744
FL CERT. NO. 6876
VENDOR NO. 593221706001
CONTRACT NO. C-9856NOTE: THE SCALE OF THESE PLANS MAY
HAVE CHANGED DUE TO REPRODUCTION.NAME OF CONTRACTOR: Brothers' Construction Inc.
NAME OF CONSULTANTS INVOLVED: None
DISTRICT 2 SECRETARY: Greg Evans, P.E.
RESIDENT ENGINEER: Scott Lent, P.E.
PROJECT OVERSIGHT: Robert Gurganious
DATE WORK STARTED: 09/21/2015
DATE WORK FINAL ACCEPTANCE OR COMPLETED: 09/16/2016ROADWAY PLANS
ENGINEER OF RECORD: NATHANIEL R. WILLBUR, P.E.

P.E. NO.: 72236

FISCAL YEAR	SHEET NO.
16	1

AS-BUILT PLAN MARKUPS

Completed as pay items are completed (preferably monthly).

Any changes are:

- Redlined or
- If Engineer of Record has revised sheets, the original will be VOIDED and the correct sheet placed behind it, except for a revised Key Sheet will be placed in front of the voided sheet.

VOID

Marking convention:

- Resident Office: **red**
- Resident Office Quality Assurance: **orange (if used)**
- District Final Estimate Initial Reviewer (QC): **blue**
- District Final Estimate Final Reviewer (PAR): **green**

AS-BUILT PLANS

KEY SHEET

COMPONENTS OF CONTRACT PLANS SET

ROADWAY PLANS
SIGNING AND PAVEMENT MARKING PLANS
SIGNALIZATION PLANS

A DETAILED INDEX APPEARS ON THE
KEY SHEET OF EACH COMPONENT

INDEX OF ROADWAY PLANS

SHEET NO.	SHEET DESCRIPTION
1	KEY SHEET
2-3	SIGNATURE SHEET
4	SUMMARY OF PAY ITEMS
5	TYPICAL SECTION
6	TYPICAL SECTION DETAILS
50-1 - 50-47	SUMMARY OF QUANTITIES
7 - 8	SUMMARY OF DRAINAGE STRUCTURES
9	OPTIONAL MATERIALS TABULATION
10 - 11	BENCHMARKS
12 - 13	REFERENCE POINTS
14	PROJECT NOTES
15 - 40	ROADWAY PLAN
41 - 42	DRAINAGE STRUCTURES
43 - 44	DRAINAGE DETAILS
45 - 47	DRIVEWAY CROSS SECTIONS
48 - 50	STORMWATER POLLUTION PREVENTION PLAN
51 - 65	TEMPORARY TRAFFIC CONTROL PLAN
66 - 67	SUMMARY OF VERIFIED UTILITIES
68 - 71	POTENTIAL CONTAMINATION SITES

LIST OF REVISED INDEX DRAWINGS

INDEX NO.	SHEET NO.
600	1-12 OF 12
619	1-2 OF 2
11200	3 OF 3
11860	4 OF 8
17302	1 OF 1
17346	1-2 AND 13-14
17347	1-5 OF 5
17727	2 OF 2
17841	1 OF 1

RAILROAD CROSSING NO. 624492-H

(SR 35/SR 555)
CSX TRANSPORTATION, INC.
RRMP SV 851.17
STA. 666+40.00 @ SURVEY SR 35/ SR 555



COMPONENT INDEX

JACK AND BORE AS-BUILT DRAWINGS
SIGN SHOP DRAWINGS

EDMS DOC # _____
EDMS DOC # _____

GOVERNING STANDARDS AND SPECIFICATIONS:

Florida Department of Transportation, 2015 Design Standards and revised Index Drawings as appended herein, and July 2015 Standard Specifications for Road and Bridge Construction, as amended by Contract Documents.

For Design Standards click on the "Design Standards" link at the following web site:
<http://www.dot.state.fl.us/rddesign/>

For the Standard Specifications for Road and Bridge Construction click on the "Specifications" link at the following web site:
<http://www.dot.state.fl.us/specificationsoffice/>

STATE OF FLORIDA DEPARTMENT OF TRANSPORTATION

FINAL AS-BUILT PLANS ~~CONTRACT PLANS~~

FINANCIAL PROJECT ID 431278-1-52-01
(FEDERAL FUNDS)

POLK COUNTY (16030 AND 16030-301)

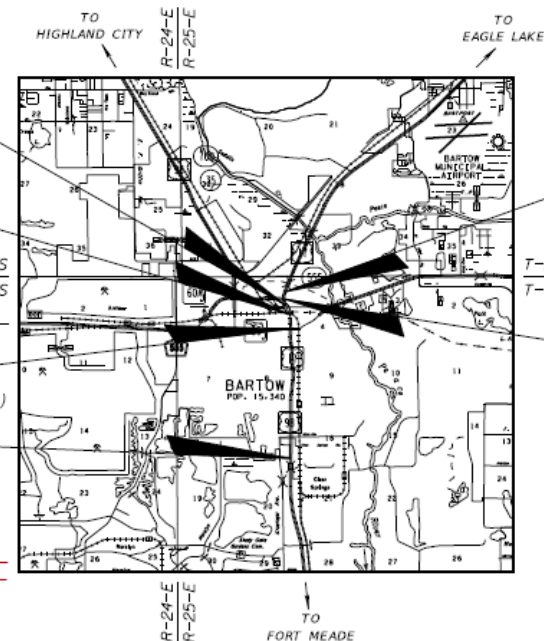
STATE ROAD NO. 35/555

END EXCEPTION
STA. 668+44.33
MP 0.323

BEGIN EXCEPTION
STA. 666+02.69
MP 0.269

STA. 651+81.09
MP 17.918 END (16030000)
MP 0.000 BEGIN (16030301)

BEGIN PROJECT (16030000)
STA. 548+37.23
MP 15.959

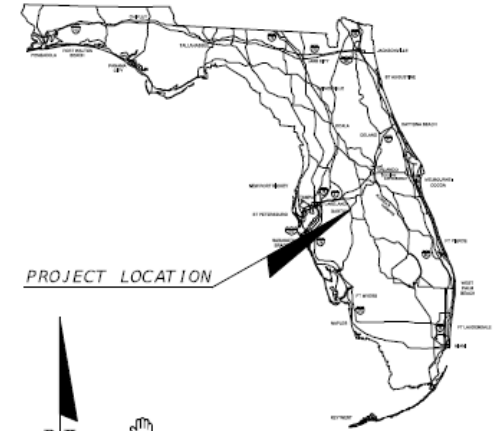


LENGTH OF PROJECT

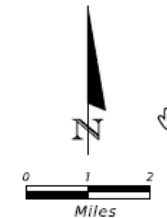
	LINEAR FEET	MILES
ROADWAY	13,433.36	2.544
BRIDGES	0.000	0.000
NET LENGTH OF PROJECT	13,433.36	2.544
EXCEPTIONS	168.15	0.032
GROSS LENGTH OF PROJECT	13,601.51	2.576

FDOT PROJECT MANAGER: M. WAYNE SHELTON

CONSTRUCTION CONTRACT NO. T1623



PROJECT LOCATION



END PROJECT (16030000)
STA. 684+38.74
MP 18.532

T-29-S
T-30-S
TO LAKE WALES

STA. 678+63.33 =
STA. 98+16.05
MP 0.508 END (16030301)
MP 18.423 BEGIN (16030000)

ROADWAY SHOP DRAWINGS
TO BE SUBMITTED TO:
ANDRA G. DIGGS II, P.E.
FLORIDA DEPARTMENT OF TRANSPORTATION
DISTRICT ONE OFFICE
801 N. BROADWAY AVENUE
BARTOW, FL 33830-3809

PLANS PREPARED BY:
FLORIDA DEPARTMENT OF TRANSPORTATION
DISTRICT ONE OFFICE
801 N. BROADWAY AVENUE
BARTOW, FL 33830-3809
(863) 519-2300

NOTE: THE SCALE OF THESE PLANS MAY HAVE
CHANGED DUE TO REPRODUCTION.

NAME OF PRIME CONTRACTOR: _____
NAME OF PRIME CONSULTANT: _____
DISTRICT SECRETARY: _____
RESIDENT ENGINEER: _____
FDOT PROJECT MANAGER: _____
PROJECT ADMINISTRATOR: _____
DATE WORK STARTED: _____
DATE WORK FINAL ACCEPTED: _____

ROADWAY PLANS
ENGINEER OF RECORD: MELISSA M. GRIMES, P.E.

P.E. NO.: 72156

FISCAL YEAR	SHEET NO.
16	1

AS-BUILT PLANS

- Contractor's Plans have a specific placeholder in EDMS. No need to insert in the Final As-built Plans.

DOCUMENT GROUP	DOCUMENT TYPE
CONST21 AS-BUILT PLANS	CONST198 All Plan Sets
	CONST174 Architectural Plans
	CONST186 ITS Plans
	CONST175 Landscaping Plans
	CONST176 Lighting Plans
	CONST177 Miscellaneous Plans <i>As-Built Plans from Contractor</i>
	CONST178 Permanent Traffic Monitor Site Plans
	CONST179 Roadway Plans <i>Asphalt Roadway - As Built Pavement Data (Form 700-050-12)</i>
	CONST185 Shop Drawings
	CONST180 Signalization Plans
	CONST181 Signing and Pavement Marking Plans
	CONST182 Structures
	CONST202 Toll Facility Plans
	CONST183 Utility Plans

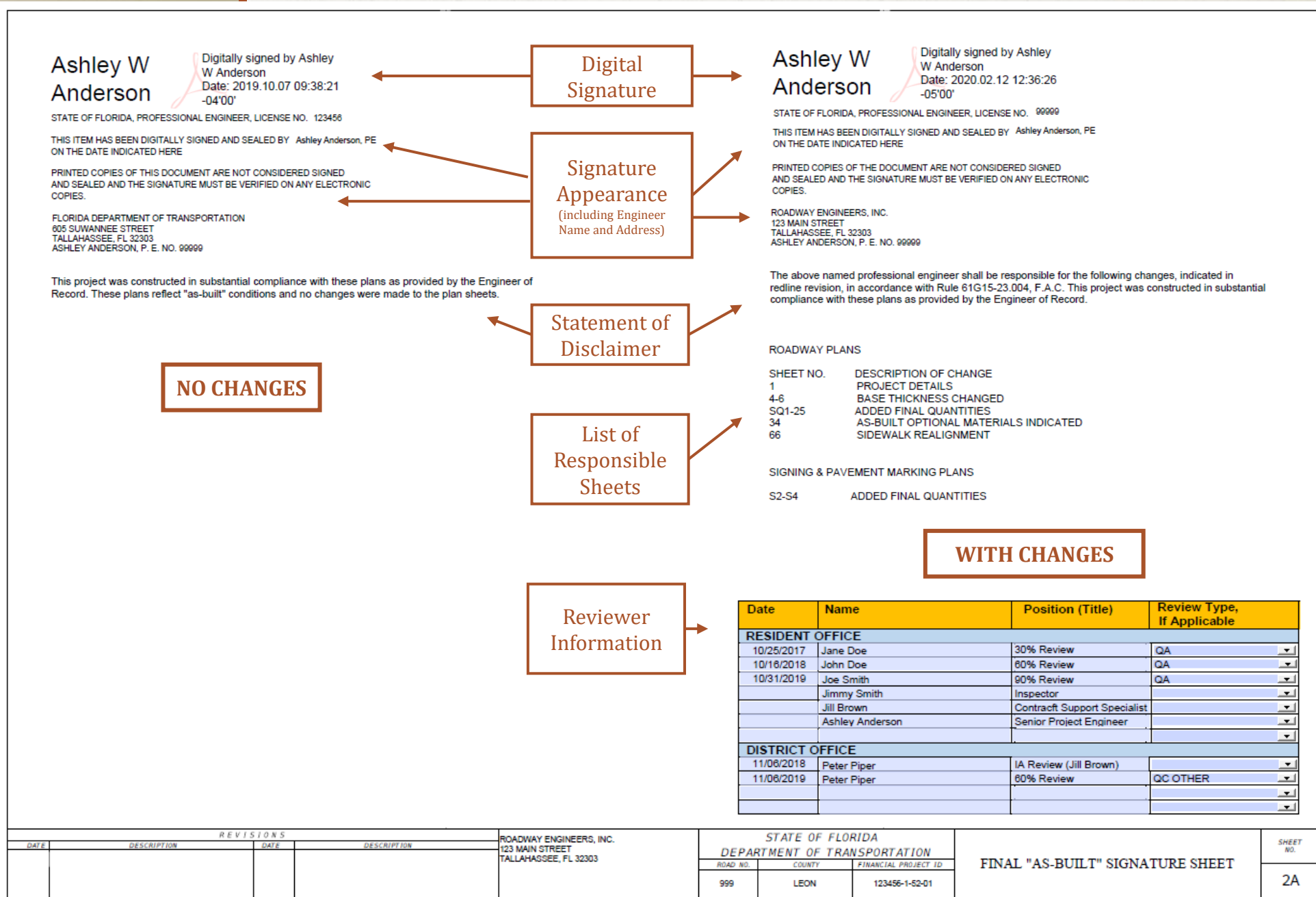
KEY SHEET - CONTRACTOR'S PLANS & SHOP DRAWINGS

- Reference the EDMS number on the Key Sheet instead.

SIGNATURE SHEET - ENGINEER(S) OF RECORD

- When original plans are extracted to create the Final As-Built Plans, the EOR digital signature will disappear.
- This is acceptable.

SIGNATURE SHEETS - RESIDENT ENGINEER



AS-BUILT PLANS

DISCLAIMER STATEMENTS

Resident Office applies a disclaimer when the plans are completed:

- No changes

If **Final As-Built Plan** sets have no changes, the RE shall digitally sign and seal the **Final As-Built Signature Sheet(s)** with a disclaimer that states:

"This project was constructed in substantial compliance with these plans as provided by the Engineer of Record. These plans reflect "as-built" conditions and no changes were made to the plan sheets."

- If changes have been done

Disclaimer to use when changes have been made:

"The above named professional engineer shall be responsible for the following changes, indicated in redline revision, in accordance with Rule 61G15-23.004, F.A.C. This project was constructed in substantial compliance with these plans as provided by the Engineer of Record."

AS-BUILT PLANS

SUMMARY OF QUANTITY SHEETS

- Effective July 2014, no Computation Books
- Plan Summary Boxes for each pay item
- Table where both original and final quantities are documented in the Plans
- Check marks are used when quantity does not change

SUMMARY OF EARTHWORK					
PAY ITEM NO.	PAY ITEM DESCRIPTION	CY		DESIGN NOTES	CONSTRUCTION REMARKS
		P	F		
0120 1	REGULAR EXCAVATION				See EDMS # 1165422, pages 8
	SR 600	1668.00			and 18. See plan sheet 27A
	TOTAL:	1668.00	1830.00		for details on SQ-6A, Plan
					Quantity Analysis.
0120 5	CHANNEL EXCAVATION				
	LAKE PARKER DRAINAGE	507.00	864.00		EDMS # 1169176 for Lake
	SADDLE CREEK	1080.00	969.00		Parker Drainage, and EDMS #
	TOTAL:	1587.00	1833.00		1169178 for Saddle Creek.
0120 6	EMBANKMENT				See EDMS # 1165422, pages 8
	SR 600	3178.00	✓		and 18. See plan sheets 27A
	STA. 1231+99.10 to STA. 1232+48.38 (RT./LT.) BOX CULVERT	3364.00			and 27B for details on SQ-6B.
	STA. 1233+01.38 to STA. 1233+42.44 (RT./LT.) BOX CULVERT	2699.00			Plan Quantity Analysis.
	TOTAL:	9241.00	9381.00		

WHAT IF.....

If no changes are made to the Designer's plans, BUT red check marks are included on the Summary of Quantity sheets to show the Designer's quantities were installed.....

Do these markups to the plans require the disclaimer for changes?

NO

UNIT	QUANTITY		TOTAL		RE AP AS
	P	F	P	F	
(LS)	1.00	✓	1.00	✓	
LB	940.00	✓	940.00	✓	
CY	80.00	✓	80.00	✓	
TN	630.00	✓	630.00	✓	
TN	130.00	✓	130.00	✓	
CV	40.00	✓	40.00	✓	

Disclaimer to use when changes have been made:

"The above named professional engineer shall be responsible for the following changes, indicated in redline revision, in accordance with Rule 61G15-23.004, F.A.C. This project was constructed in substantial compliance with these plans as provided by the Engineer of Record."

AS-BUILT PLANS

SUMMARY OF QUANTITY SHEETS

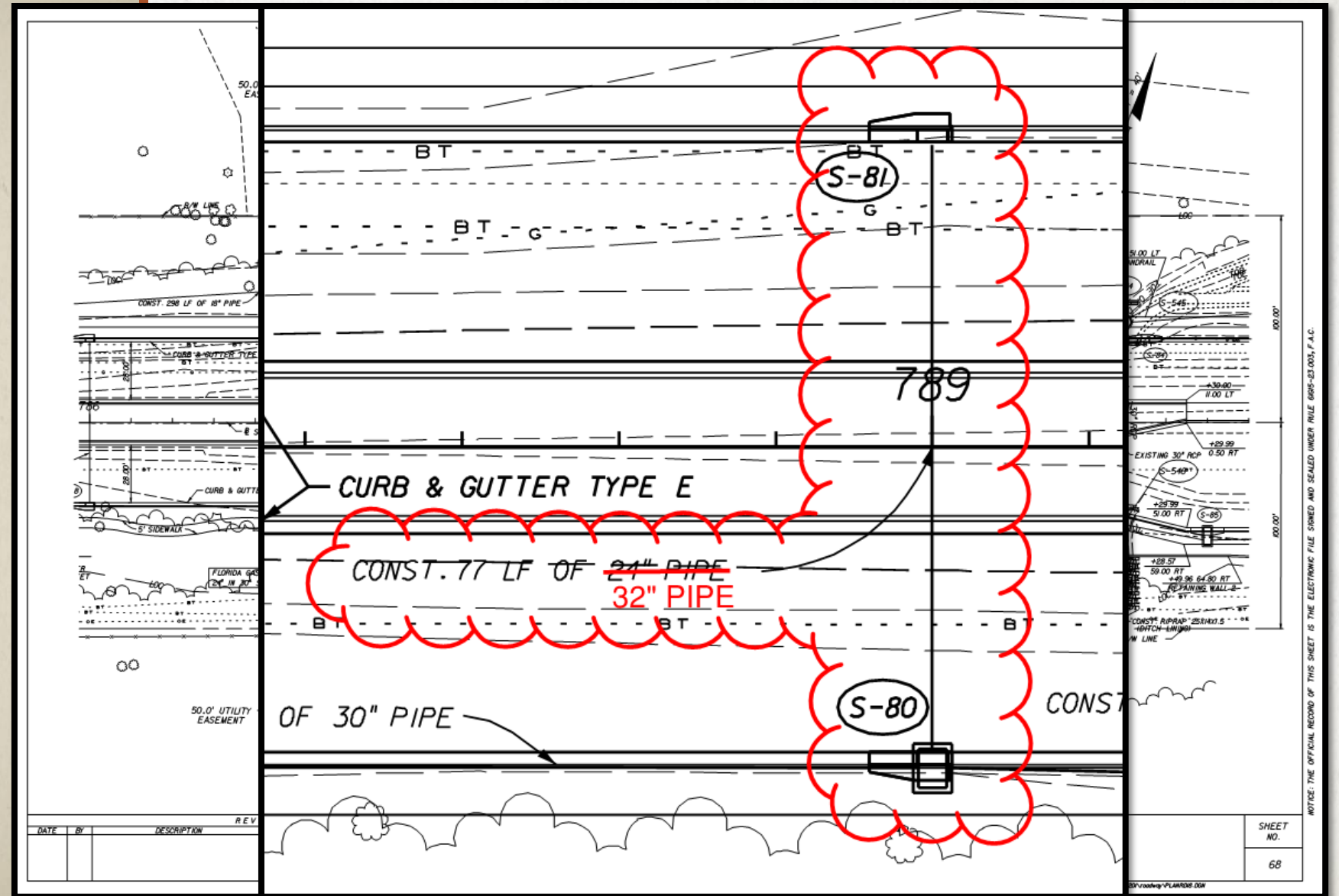
- Effective January 2021, Design will no longer create Plan Summary Boxes
- Estimated Quantities Report details design quantities ♦
- *Form 700-050-10, Pay Item Summary and Certification* details final quantities and references all back up information

<https://scoc.fdot.gov/>

Login > Reports > Central Office (Statewide Reports) > Estimates > Pay Item Summary and Certification

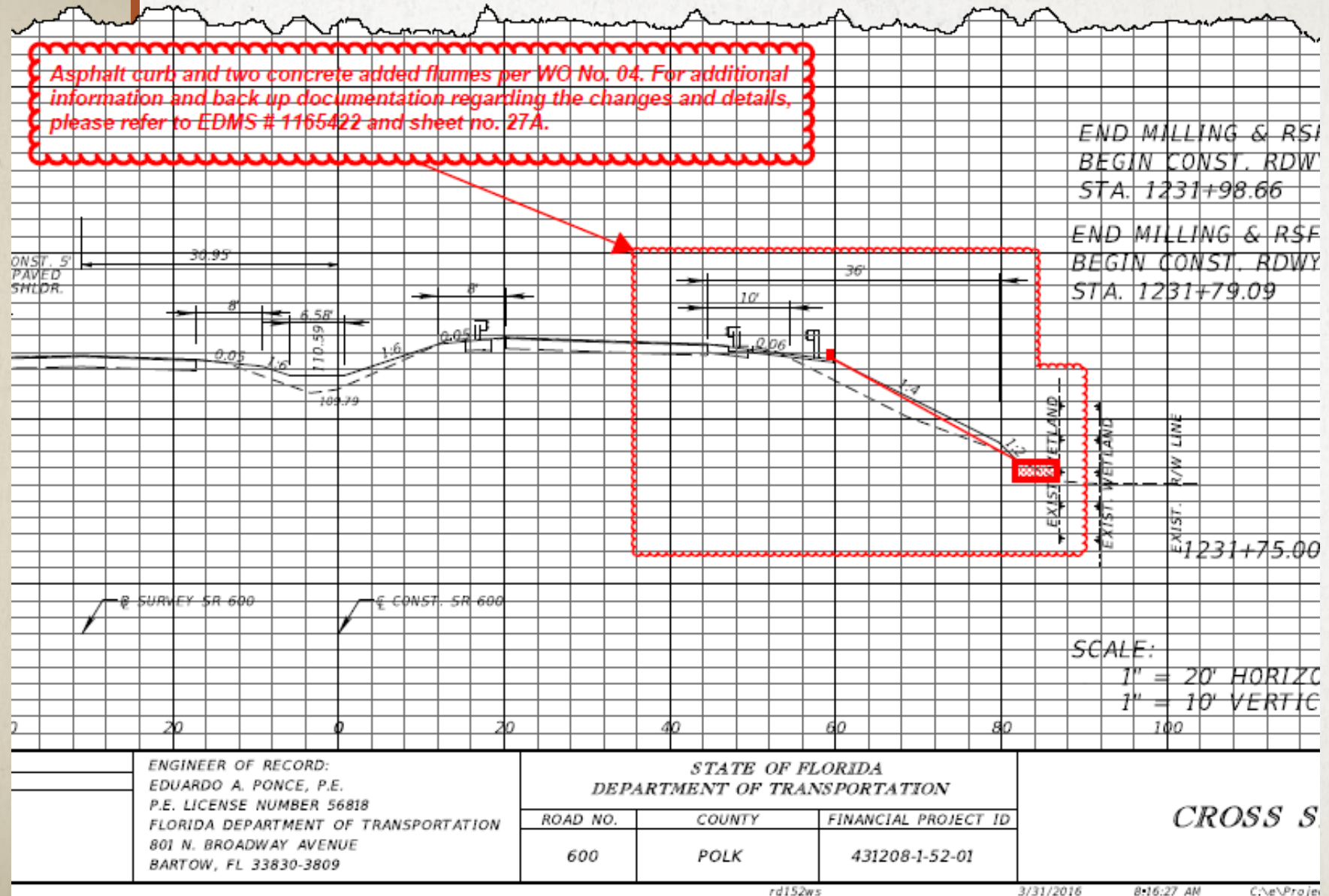
FDOT Pay Item Summary and Certification																
Date:																
District	Contract	Project Id	Federal Id	Line Item	Original Quantity	Quantity Paid	Unit	Item Code	SA	Item Description	EDMS/Page	Unit Price	Item Paid Amount	Line Item Amount	Total Paid Amt	
07-District 7	T7445	43751415201	D720004B	0005	1.00	1.00	LS	0101 1		MOBILIZATION	125941	\$1,239,178.07	\$1,239,178.08	\$0.00	\$1,239,178.08	
07-District 7	T7445	43751415201	D720004B	0010	1.00	1.00	LS	0102 1		MAINTENANCE OF TRAFFIC	526982	\$150,000.00	\$150,000.00	\$0.00	\$150,000.00	
07-District 7	T7445	43751415201	D720004B	0015	1.00	1.00	LS	0102 2 7		SPECIAL DETOUR 7	526982	\$2,500.00	\$2,500.00	\$0.00	\$2,500.00	
07-District 7	T7445	43751415201	D720004B	0020	228.00	1,237.00	HR	0102 14		TRAFFIC CONTROL OFFICER	526982	\$65.00	\$80,405.00	\$0.00	\$80,405.00	
07-District 7	T7445	43751415201	D720004B	0025	19,245.00	36,773.00	ED	0102 60		WORK ZONE SIGN	526982	\$0.25	\$9,193.25	\$0.00	\$9,193.25	
07-District 7	T7445	43751415201	D720004B	0030	4,200.00	0.00	LF	0102 71 15		TEMPORARY BARRIER, F&I, ANCHORED	526982	\$0.01	\$0.00	\$0.00	\$0.00	
07-District 7	T7445	43751415201	D720004B	0035	43,915.00	168,894.00	ED	0102 74 1		CHANNELIZING DEVICE - TYPES I, II, DI, VP, DRUM, OR L	526982	\$0.15	\$25,334.10	\$0.00	\$25,334.10	
07-District 7	T7445	43751415201	D720004B	0040	894.00	894.00	LF	0102 74 7		CHANNELIZING DEVICE - PEDESTRIAN LCD	526982	\$2.75	\$2,458.50	\$0.00	\$2,458.50	
07-District 7	T7445	43751415201	D720004B	0045	430.00	208.00	ED	0102 76		ARROW BOARD / ADVANCE WARNING ARROW PANEL	526982	\$6.00	\$1,248.00	\$0.00	\$1,248.00	
07-District 7	T7445	43751415201	D720004B	0050	2.00	2.00	ED	0102 78		TEMPORARY WORK AREA REFLECTIVE PANEL	526982	\$12,310.00	\$24,620.00	\$0.00	\$24,620.00	

PLAN SHEETS



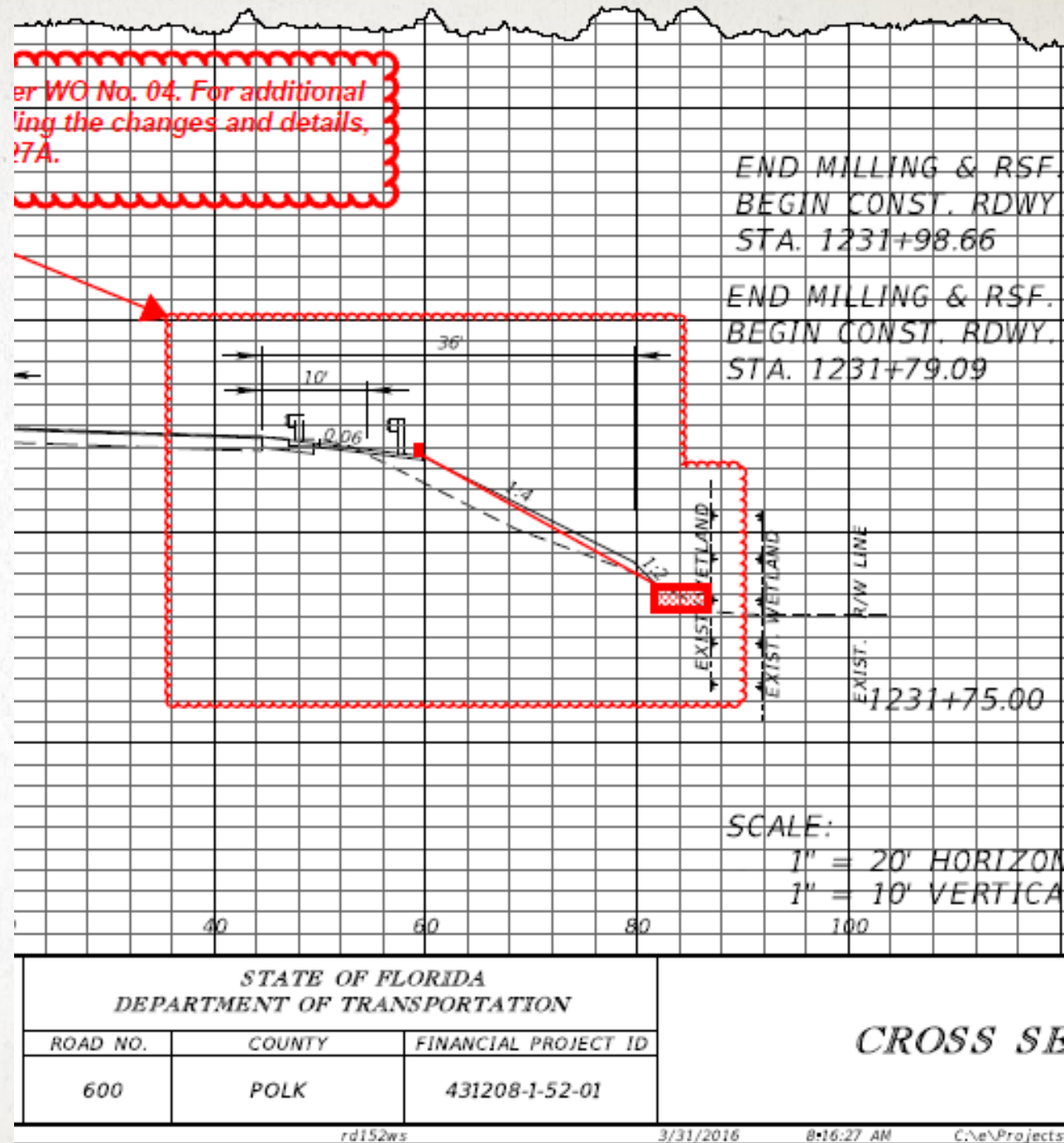
AS-BUILT PLANS

CROSS SECTION SHEETS



AS-BUILT PLANS

CROSS SECTION SHEETS



SPOT THE ERRORS

COMPONENTS OF CONTRACT PLANS SET

ROADWAY PLANS
SIGNING AND PAVEMENT MARKING PLANS
UTILITY PLANS

STATE OF FLORIDA DEPARTMENT OF TRANSPORTATION

FINAL CONTRACT PLANS

~~CONTRACT PLANS~~

FINANCIAL PROJECT ID 431278-1-52-01
(FEDERAL FUNDS)
POLK COUNTY (16030 AND 16030-301)
STATE ROAD NO. 35/555

FINAL AS-BUILT PLANS

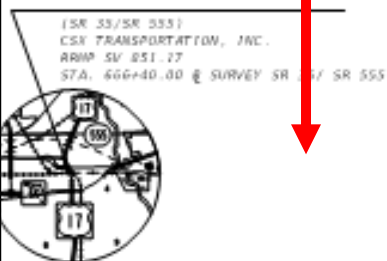
Strike Through
in Red; Don't
Cross Out

INDEX OF ROADWAY PLANS

SHEET NO.	SHEET DESCRIPTION
1	KEY SHEET
2-3	SIGNATURE SHEET
4	SUMMARY OF PAY ITEMS
5	TYPICAL SECTION
6	TYPICAL SECTION DETAILS
50-1 - 50-47	SUMMARY OF QUANTITIES
7 - 8	SUMMARY OF DRAINAGE STRUCTURES
9	OPTIONAL MATERIALS TABULATION
10 - 11	BENCHMARKS
12 - 13	REFERENCE POINTS
14	PROJECT NOTES
15 - 40	ROADWAY PLAN
41 - 42	DRAINAGE STRUCTURES
43 - 44	DRAINAGE DETAILS
45 - 47	DRIVEWAY CROSS SECTIONS
48 - 50	STORMWATER POLLUTION PREVENTION PLAN
51 - 65	TEMPORARY TRAFFIC CONTROL PLAN
66 - 67	SUMMARY OF VERIFIED UTILITIES
68 - 71	POTENTIAL CONTAMINATION SITES

L157
INDEX

Missing
Component
Index



GOVERNING STANDARDS AND SPECIFICATIONS

Florida Department of Transportation, 2015 Design Standards and revised Index Drawings as appended herein, and July 2015 Standard Specifications for Road and Bridge Construction, as amended by Contract Documents.

For Design Standards click on the "Design Standards" link at the following web site:
<http://www.dot.state.fl.us/rddesign/>

For the Standard Specifications for Road and Bridge Construction click on the "Specifications" link at the following web site:
<http://www.dot.state.fl.us/specificationsoffice/>

END EXCEPTION
STA. 668+44.33
MP 0.323

GIN EXCEPTION
A. 666+02.69
MP 0.269

STA. 651+81.09
MP 17.918 END (16030000)
MP 0.000 BEGIN (16030301)

BEGIN PROJECT (16030000)
STA. 548+37.23
MP 15.959

Missing Contract
Information

Should be on
Signature Sheet

LENGTH OF PROJECT		
	LINEAR FEET	MILES
ROADWAY	13,433.36	2.544
BRIDGES	0.000	0.000
NET LENGTH OF PROJECT	13,433.36	2.544
EXCEPTIONS	168.15	0.032
GROSS LENGTH OF PROJECT	13,601.51	2.576

FDOT PROJECT MANAGER: N. WAYNE SHELTON



"The above named professional engineer shall be responsible for the following changes, indicated in redline revision, in accordance with Rule 61G15-23.004, F.A.C. This project was constructed in substantial compliance with these plans as provided by the Engineer of Record."

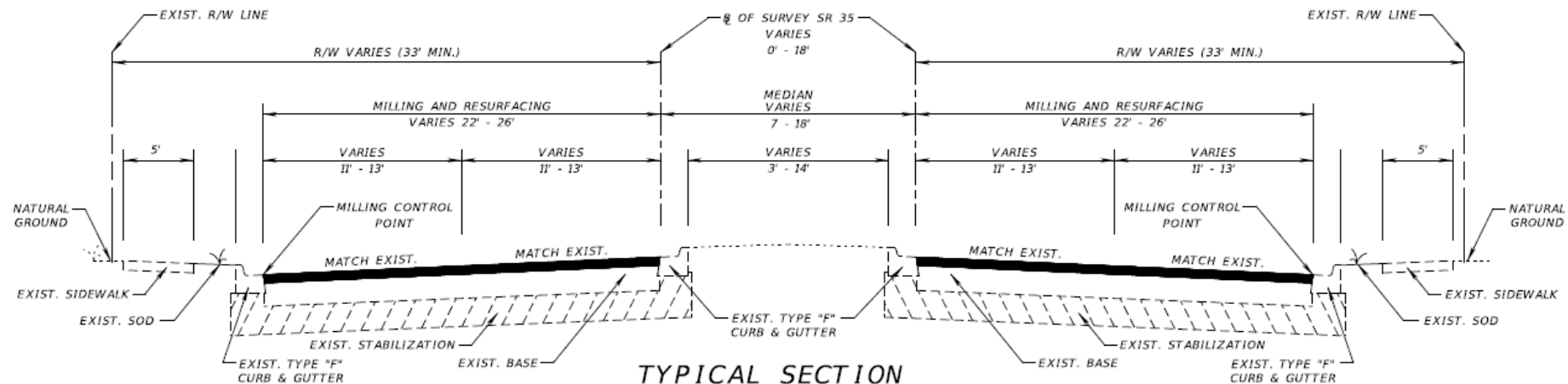
KEY SHEET REVISIONS	
DATE	DESCRIPTION

ROADWAY PLANS
ENGINEER OF RECORD: MELISSA M. GRIFES, P.E.

P.E. NO.: 72156

FISCAL YEAR	SHEET NO.
16	1

NOTICE: THE OFFICIAL RECORD OF THIS SHEET IS THE ELECTRONIC FILE STORED AND SEALED UNDER RULE 61G15-23.003, F.A.C.



TYPICAL SECTION
SR 35/SR 555

STA. 548+37.23 TO STA. 666+02.69
STA. 668+44.33 TO STA. 684+50.00

MAINLINE

MILLING RIGHT SIDE ROADWAY

MILL EXISTING ASPHALT PAVEMENT (3.00" AVG. DEPTH)
RESURFACING RIGHT SIDE ROADWAY

TYPE SP STRUCTURAL COURSE (TRAFFIC C) (1.50")
AND FRICTION COURSE FC-12.5 (TRAFFIC C) (1.50") (PG 76-22, PMA)

MILLING LEFT SIDE ROADWAY

MILL EXISTING ASPHALT PAVEMENT (3.50" AVG. DEPTH)
RESURFACING LEFT SIDE ROADWAY

TYPE SP STRUCTURAL COURSE (TRAFFIC C) (2.00")
AND FRICTION COURSE FC-12.5 (TRAFFIC C) (1.50") (PG 76-22, PMA)

TURNLANES, CROSSOVERS, SHOULDERS, SIDE STREETS, AND APPROACH SLABS

MILLING

MILL EXISTING ASPHALT PAVEMENT (1.50" AVG. DEPTH)

RESURFACING

FRICTION COURSE FC-12.5 (TRAFFIC CLASS 12.5) 76-22, PMA)

TRAFFIC DATA

CURRENT YEAR = 2015 AADT = 14,500
ESTIMATED OPENING YEAR = 2016 AADT = 15,000
ESTIMATED DESIGN YEAR = 2035 AADT = 23,500
K = 9.0% D = 55.3% T = 18.2% (24 HOUR)
DESIGN HOUR T = 9.1%
DESIGN SPEED = 45 MPH

SR 60

STA. 93+65.78 TO STA. 97+65.00 (LT.)
STA. 92+10.58 TO STA. 97+65.00 (RT.)

MAINLINE, TURNLANES, AND RAMPS

MILLING

MILL EXISTING ASPHALT PAVEMENT (1.50" AVG. DEPTH)

RESURFACING

FRICTION COURSE FC-12.5 (TRAFFIC C) (1.50") (PG 76-22, PMA)

NOT TO SCALE

REVISIONS				ENGINEER OF RECORD: MELISSA M. GRIMES, P.E. P.E. LICENSE NUMBER 72156 FLORIDA DEPARTMENT OF TRANSPORTATION 801 N. BROADWAY AVENUE BARTOW, FL 33830-3809	STATE OF FLORIDA DEPARTMENT OF TRANSPORTATION			SHEET NO.
DATE	DESCRIPTION	DATE	DESCRIPTION		ROAD NO.	COUNTY	FINANCIAL PROJECT ID	
					35	POLK	431278-1-52-01	

SPOT THE ERRORS

Missing reference
to backup
documentation

Should be clouded

1

2

REVISIONS						THE LPA GROUP INCORPORATED Ryan Patterson, P.E. #62964 1320 Executive Center Dr. Suite 100 Tallahassee, FL 32301 Ph. (850) 205-0460 C.A. #4307	STATE OF FLORIDA DEPARTMENT OF TRANSPORTATION		PLAN	SHEET NO. 68
DATE	BY	DESCRIPTION	DATE	BY	DESCRIPTION		ROAD NO.	COUNTY		
							10	LEON	219843-1-52-01	

NOTICE: THE OFFICIAL RECORD OF THIS SHEET IS THE ELECTRONIC FILE SIGNED AND SEALED UNDER RULE 68B5-23.003, F.A.C.

4

THE OFFICIAL RECORD OF THIS SHEET IS THE ELECTRONIC FILE DIGITALLY SIGNED AND SEALED UNDER RULE 61G15-23.004, F.A.C.

FINAL ESTIMATE PROCESS

FINAL ACCEPTANCE

- Final Acceptance = End of Construction

What's Next?

- Last Partial Payment is processed
- Prepare to generate the Final Estimate



FINAL ESTIMATE PROCESS

AUTHORITY:
STANDARD SPEC 9-8

9-8 Acceptance and Final Payment.

9-8.1 Acceptance and Final Payment Documents: Whenever the Contractor has completely performed the work provided for under the Contract and the Engineer has performed a final inspection and made final acceptance (as provided in 5-10 and 5-11), and subject to the terms of 8-11, the Engineer will prepare a final estimate showing the value of the work as soon as the Engineer makes the necessary field measurements and computations. The Engineer will correct all prior estimates and payments in the final estimate and payment. The Department will pay the estimate, less any sums that the Department may have deducted or retained under the provisions of the Contract, as soon as practicable after final acceptance of the work, along with all executed supplemental agreements received after final acceptance.

OFFER LETTER

If the Contractor fails to furnish all required Contract Documents as listed in (1) through (9) below within 90 days of the Department's offer of final payment or request for refund of overpayment, the Department may suspend the Contractor's Certificate of Qualification under the provisions of Florida Administrative Code 14-22.

1. The Contractor has agreed in writing to accept the balance due or refund the overpayment, as determined by the Department, as full settlement of his account under the Contract and of all claims in connection therewith, or the Contractor, has through the use of the Qualified Acceptance Letter, accepted the balance due or refunded the overpayment, as determined by the Department, with the stipulation that his acceptance of such payment or the making of such refund does not constitute any bar, admission, or estoppel, or have any effect as to those payments in dispute with the Contractor and the Department. To receive payment based on a Qualified Acceptance Letter, define in writing the dispute or pending claim with full particular of all items of all issues in dispute, including itemized amounts claimed for all particulars of all items, and submit it as part of the Qualified Acceptance Letter. The Contractor further agrees, by submitting a Qualified Acceptance Letter that any pending or future arbitration claim or suit is limited to those particulars, including the itemized amounts, defined in the original Qualified Acceptance Letter, and that he will commence with any such arbitration claim or suit within 820 calendar days from and after the

ACCEPTANCE LETTER

FINAL ESTIMATE PROCESS

AUTHORITY:
STANDARD SPEC 9-8

time of final acceptance of the work and that his failure to file a formal claim within this period constitutes his full acceptance of the Engineer's final estimate and payment. The overpayment refund check from the Contractor, if required, will be considered a part of any Acceptance Letter executed.

2. The Contractor has properly maintained the project, as specified hereinbefore.

3. The Contractor has furnished a sworn affidavit to the effect that the Contractor has paid all bills and no suits are pending (other than those exceptions listed, if any) in connection with work performed under the Contract and that the Contractor has not offered or made any gift or gratuity to any person in a position of trust or confidence of any nature with, any employee of the Department in the performance of the Contract. Include with the listed tort liability exceptions, if any, evidence of adequate insurance coverage as required in 7-13.

4. The Contractor shall execute and deliver by completion of their portion of the affidavit and surety release subsequent to the Contractor's completion of his portion, to final payment to the Contractor and agrees that the making of such payment does not relieve the surety of any of its obligations under the bond.

5. The Contractor has complied with and settled all requirements pertaining to any wage-rate provisions.

6. The Contractor has submitted all required mill tests and analysis reports to the Engineer.

7. The Contractor has furnished the Construction Compliance with Specifications and Plans Certification. Provide the Engineer with a notarized final certification of compliance with the requirements of the contract to the Engineer's final estimate. Certification must be on a form provided by the Engineer.

8. The Contractor has submitted and the Department has accepted all as-built drawings and certified surveys.

9. The Contractor has furnished all required manufacturers' warranties to the Engineer.

**FORM 700-050-21
(a.k.a. Form 21A)**

FORM 700-020-02

FINAL ESTIMATE PROCESS

OFFER LETTER TO THE CONTRACTOR

- Must be submitted to the Contractor within **30 days** from Final Acceptance
- Sent to the Contractor (typically from Resident Office) BUT must be returned to the District Final Estimates Office

The Offer Letter includes:

- Offer Letter – ONLY 1
 - Offer of Final Payment - OR -
 - Request for Refund
- Final Estimate printout
- Acceptance Letter (to be signed by the Contractor). Acceptance Letter gives 2 options:
 - Regular Acceptance - Option of Agreeing with Offer - OR -
 - Qualified Acceptance - Option of Disagreeing with Offer
- Contractor's Affidavit & Surety Release (Form 21-A)
- Other required documents to be returned to the District Final Estimates office

FINAL ESTIMATE PROCESS

FINAL ESTIMATE
DOCUMENTATION
TO THE DISTRICT

- Offer Letter



What's Next?



POLL QUESTION

Do you think there is a deadline for submitting the Final Estimate Documentation to the District?

- No Deadline
- Submit information as items close throughout the project
- Immediately after Final Acceptance
- 30 Days after Final Acceptance
- Before the Contractor's 820 Days to make Claim are up

FINAL ESTIMATE PROCESS

FINAL ESTIMATE DOCUMENTATION TO THE DISTRICT

Resident Office Submittal to the District (WITHIN 30 DAYS of Final Acceptance) with all back up to substantiate the final payment to the Contractor.

The Final Estimates Documentation consists of:

- Offer Letter
- Final As-Built Plans
- Contract Time Documentation
- Material Certification Documents
- Overruns and Underruns
- Required documents outlined on Final Plans and Estimate Transmittal (Form 700-050-20)
 - All quantity backup (Asphalt Lot Packages, Final Measurements, Pile Driving Logs, etc.)
 - Working Drawings, As-Built Load Rating, etc.

FINAL ESTIMATE PROCESS

FINAL PLANS AND ESTIMATES TRANSMITTAL FORM 700-050-20

2008 F33300A DEPARTMENT OF TRANSPORTATION		MESSAGE CONSTRUCTION 2008	
FINAL PLANS AND ESTIMATES TRANSMITTAL			
To: _____	Date: _____		
From: _____	E-mail: _____		
Transmittal Prepared by: _____	Phone: _____		
Financial Project ID(s): _____			
Fed. Aid Project No.: _____	Contract No. _____	County: _____	
Contractor: _____			
Contingency Funds to be Unencumbered: C.P.I. = \$ _____ SA/CO # _____ = \$ _____			
(List each Contingency Fund separately) SA/CO # _____ = \$ _____ SA/CO # _____ = \$ _____			
Overrun Funds to Be Unencumbered = \$ _____			
For Resident Office Use			
We are this date transmitting the Final Estimates Documentation on the above referenced contract. This submission includes the data indicated below:			
PLEASE VERIFY THAT THE DOCUMENTS/INFORMATION BELOW HAVE BEEN ENTERED INTO EDMS.			
Applicable Job Correspondence	Yes <input type="checkbox"/> No <input type="checkbox"/> N/A <input type="checkbox"/>	Offer Letter Date entered in SM	Yes <input type="checkbox"/> No <input type="checkbox"/> N/A <input type="checkbox"/>
Time Correspondence	Yes <input type="checkbox"/> No <input type="checkbox"/> N/A <input type="checkbox"/>	Receipt of Offer Letter entered in SM	Yes <input type="checkbox"/> No <input type="checkbox"/> N/A <input type="checkbox"/>
Schedule of Values (D/B & LS)	Yes <input type="checkbox"/> No <input type="checkbox"/> N/A <input type="checkbox"/>	For Projects using Form 675-030-20 (Asphalt Roadway	
Fuel Adjustment Certifications (D/B & LS)	Yes <input type="checkbox"/> No <input type="checkbox"/> N/A <input type="checkbox"/>	Daily Report of Quality Control - QCRR) submit the Asphalt	
Load Rating Calculations (Structures)	Yes <input type="checkbox"/> No <input type="checkbox"/> N/A <input type="checkbox"/>	Roadway As-Built Pavement Data Form (700-050-12) in	
Asphalt LOT Submittal Packages	Yes <input type="checkbox"/> No <input type="checkbox"/> N/A <input type="checkbox"/>	Excel Format to CO-FinalEstimateSection@dot.state.fl.us	
Bituminous Certifications Form 700-050-66	Yes <input type="checkbox"/> No <input type="checkbox"/> N/A <input type="checkbox"/>	For Projects using Form 675-030-20A (QCRR -	
MOT Certifications Form 700-050-62/67/68	Yes <input type="checkbox"/> No <input type="checkbox"/> N/A <input type="checkbox"/>	Automated Version, submit QCRR in Excel Format	
Buy America Certifications	Yes <input type="checkbox"/> No <input type="checkbox"/> N/A <input type="checkbox"/>	in EDMS AND to State Material's Office (SMO)	
SAs & Work Orders	Yes <input type="checkbox"/> No <input type="checkbox"/> N/A <input type="checkbox"/>	SM-MACQCRRUpload@dot.state.fl.us	Yes <input type="checkbox"/> No <input type="checkbox"/> N/A <input type="checkbox"/>
ITSFM Feature Templates and As-Built to Traffic Ops		EDMS DOC # _____	
(correspondence in EDMS)	Yes <input type="checkbox"/> No <input type="checkbox"/> N/A <input type="checkbox"/>	(Final) Construction Compliance w/ Plans &	
APL Data entered in PTS	Yes <input type="checkbox"/> No <input type="checkbox"/> N/A <input type="checkbox"/>	Specs Form 700-020-02	_____
Shop Drawings	Yes <input type="checkbox"/> No <input type="checkbox"/> N/A <input type="checkbox"/>	Offer Letter	_____
As-Built Drawings (Contractor)	Yes <input type="checkbox"/> No <input type="checkbox"/> N/A <input type="checkbox"/>	Final CPPR Document	_____
Final As-Built Plans (Submitted to DFEO)	Yes <input type="checkbox"/> No <input type="checkbox"/> N/A <input type="checkbox"/>	Pay Item Summary & Certification Sheet	
LFA/UWHCA Closeout Letter	Yes <input type="checkbox"/> No <input type="checkbox"/> N/A <input type="checkbox"/>	Form 700-050-10	_____
Final Estimates Office Record of Final Plans and		Certification as to Accuracy of Final Payment	
Documents Form 700-050-28 Initiated in FES	Yes <input type="checkbox"/> No <input type="checkbox"/> N/A <input type="checkbox"/>	Form 700-050-38	_____
Final Inspection & Acceptance of Fed Aid Project		Overruns and Underruns (SCOC)	_____
Form 700-010-32 Initiated	Yes <input type="checkbox"/> No <input type="checkbox"/> N/A <input type="checkbox"/>	Earthwork Survey Waiver Form 700-050-35	_____
Warranty Date(s) entered in SM and CIM	Yes <input type="checkbox"/> No <input type="checkbox"/> N/A <input type="checkbox"/>	(Original and Final)	_____
Final Acceptance entered in SM (if designated by District)	Yes <input type="checkbox"/> No <input type="checkbox"/> N/A <input type="checkbox"/>	Final Acceptance of Traffic Signal Installation(s)	
CPPR Grade Finalized in CIM	Yes <input type="checkbox"/> No <input type="checkbox"/> N/A <input type="checkbox"/>	and Transfer of Maintenance Form 700-010-22	
Any Pending Supplemental Agreements?			
Any Pending/Possible Time Extensions, Claims or Arbitrations?			
Back Up Documentation			
Pipe Inspection & Video Report	Yes <input type="checkbox"/> No <input type="checkbox"/> N/A <input type="checkbox"/>	Drilled Shaft Records	Yes <input type="checkbox"/> No <input type="checkbox"/> N/A <input type="checkbox"/>
Pile Records	Yes <input type="checkbox"/> No <input type="checkbox"/> N/A <input type="checkbox"/>	Core-out Reports	Yes <input type="checkbox"/> No <input type="checkbox"/> N/A <input type="checkbox"/>
Straightedge Reports (Data Entry Forms)	Yes <input type="checkbox"/> No <input type="checkbox"/> N/A <input type="checkbox"/>		
Composite Pay Factor Summary	_____	Striping Certification Summary	_____
Bituminous Adjustment Summary	_____	SA/VO Summary	_____
Fuel Adjustment Summary	_____	Damage Recovery/Lane Rental Summary	_____
MOT Certification Summary	_____	Penalty Summary (Lost Samples/Low Strength)	_____
Other	_____	Other	_____
Other	_____	Other	_____
Other	_____	Other	_____
For District Final Estimates Office Use			
Collaboration Site Closed	Yes <input type="checkbox"/> No <input type="checkbox"/> N/A <input type="checkbox"/>	Warranty Bonds	Yes <input type="checkbox"/> No <input type="checkbox"/> N/A <input type="checkbox"/>
Final Estimates Office Record of Final Plans and		Final Acceptance entered in SM (if performed by District)	Yes <input type="checkbox"/> No <input type="checkbox"/> N/A <input type="checkbox"/>
Documents Form 700-050-28 Completed	Yes <input type="checkbox"/> No <input type="checkbox"/> N/A <input type="checkbox"/>	Overpayment Check	Yes <input type="checkbox"/> No <input type="checkbox"/> N/A <input type="checkbox"/>
Final As-Built Plans (Submitted to EDMS)	Yes <input type="checkbox"/> No <input type="checkbox"/> N/A <input type="checkbox"/>	Final Inspection & Acceptance of Fed Aid Project	
Are Overrun Funds Unencumbered?	Yes <input type="checkbox"/> No <input type="checkbox"/> N/A <input type="checkbox"/>	Form 700-010-32	_____
Are Contingency Funds Unencumbered?	Yes <input type="checkbox"/> No <input type="checkbox"/> N/A <input type="checkbox"/>	Contractor's Acceptance Letter	_____
Court Orders	Yes <input type="checkbox"/> No <input type="checkbox"/> N/A <input type="checkbox"/>	Contractor's Aff. and Surety Consent (21-A)	_____
Arbitration Rulings	Yes <input type="checkbox"/> No <input type="checkbox"/> N/A <input type="checkbox"/>	Final Interest Payment Log	_____
Final Project Materials Certification Letter			
(PMCL) in MAC	Yes <input type="checkbox"/> No <input type="checkbox"/> N/A <input type="checkbox"/>		

FINAL ESTIMATE PROCESS

REVIEW OF THE FINAL ESTIMATE DOCUMENTATION

- All Information has been submitted to the District Final Estimate Office

What's Next?

- District will conduct a Post Audit Review (PAR) per RAM 3.7.3

Minimum requirements for PAR frequencies					
	\$100M or >	\$50M to \$100M	\$25M to \$50M	\$2M to \$25M	<\$2M
PAR	100%	50%	40%	35%	15%

- If \$\$ mistakes are discovered, the District will submit a **Notifications of Additional Findings** to the Contractor.

POLL QUESTION

What do you think the goals of a Post Audit Review are?

- Zero Dollar Change to Final Estimate ✓
- Zero Procedural Errors ✓
- Improving the Final Estimates Process ✓
- Maintaining positive outcomes ✓

FINAL ESTIMATE PROCESS

POST AUDIT REVIEW



FLORIDA DEPARTMENT OF TRANSPORTATION

RON DeSANTIS
GOVERNOR

1074 Highway 90 East
Chipley, FL 32428 - 0607

KEVIN J. THIBAUT, P.E.
SECRETARY

POST AUDIT REVIEW FOR A CERTIFIED FINAL ESTIMATES

Per the Review & Administration Manual, Topic 700-050-005; Chapter 3: If errors or omissions are listed, the Consultant / In-house will submit a formal report within FOURTEEN(14) calendar days defining what steps will be taken to eliminate these types of issues from recurring on future projects.

This report will be sent to:

Kristin Tadlock, State Final Estimates Engineer: Kristin.Tadlock@dot.state.fl.us

Ed Hudec, District Construction Engineer: Ed.Hudec@dot.state.fl.us

Robby Stone, District Final Estimate Manager: Robby.Stone@dot.state.fl.us

Lead Financial Project Id 218699-2-52-01		Contract Id E3R38	Contract Type CC
Road No./Description SR 30/BRIDGE REPAIR-REHABILITATION,49010000,			Fuel Spec Year 2013
Contractor Name <input type="checkbox"/> Joint Venture PNEUMATIC CONCRETE CO., INC.			
Resident Office Midway Operations Center		CCEI	
FDOT Resident Engineer Corbin, Gabriella		CCEI Sr. Project Engineer	
FDOT Project Administrator Munyon, Patrick		CCEI Project Administrator	
FDOT Project Manager Kerwin, Jeff			
F.E. Level II Stoutamire, William		Review Date 3/6/2019	
Reviewer Bradford, David		Day(s) In Review 1	
Final Acceptance Date 2/19/2019		Offer of Final Payment Date 3/4/2019	
Date Project Received at DFEO 3/6/2019		Days to Submit Offer Letter 13	
Certified Amount \$462,354.19		Final Amount \$462,354.19	
OVER PAYMENT		\$0.00	
UNDER PAYMENT		\$0.00	
ABSOLUTE VALUE		\$0.00	
NET VALUE OF ALL CHANGES		\$0.00	
Review Notes/Findings			
Adjustment Type	Amount	Remarks	
Other - Final Estimate Documentation	\$0.00	This Project Estimate was well prepared and submitted in a timely manner.	

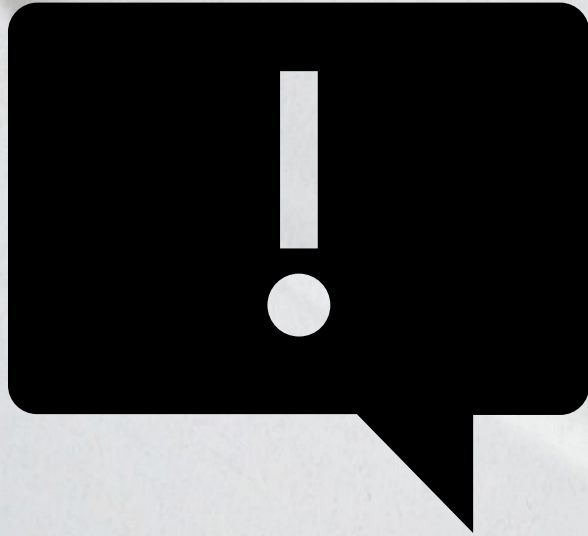
FINAL ESTIMATE PROCESS

CONTRACT CLOSEOUT

What's Next?

- Submit the PAR report to the Resident Office.
 - 14 days to respond if errors are found on how these mistakes will be prevented in the future.
- Pass to the Comptroller for final payment IF all claims have been settled.
 - If not, maximum of 820 days

AND REMEMBER....



The most important thing to remember if you have questions on final estimates is...

- Read your contract
- ReAd yOuR CoNtRacT
- Pretty please read your contract
- READ YOUR CONTRACT!

QUESTIONS?
