

STATE CONSTRUCTION OFFICE

# FINAL ESTIMATES

ASHLEY ANDERSON, PE  
CONSTRUCTION FINAL ESTIMATES ENGINEER  
[ASHLEY.ANDERSON@DOT.STATE.FL.US](mailto:ASHLEY.ANDERSON@DOT.STATE.FL.US)  
(850) 414-4184

AUGUST 18, 2022

# POLL QUESTION

**Have you taken the Final Estimates Level 2 Course?**

- Yes
- No

# POLL QUESTION

**How many years of experience in FDOT Project Management do you have?**

- 0-2 years
- 3-5 years
- 5-10 years
- 10-20 years
- I'm an expert!



## **WHERE WE'RE GOING:**

- What is Final Estimates?
- General Information
- Monthly Estimates
- Final As-Built Plans
- Final Estimate Process



# POLL QUESTION

## **What does Final Estimates mean to you?**

- Closeout Process at the end of the project
- Only applies during monthly payments
- Backup documentation throughout the project

# WHAT IS FINAL ESTIMATES?

- Starts at the beginning of the project.
- Ensures that the Contractor is paid fairly for the work performed and accepted.
- Ensures that the Department has the proper documentation to justify payment to Contractor
  - Contract quantities
  - Time
  - Material acceptance
- CTQP Level 2 Qualification in Final Estimates

# HOW FINAL ESTIMATES IS CALCULATED?

- **Read the Contract**
- Know the Specifications Year and Modifications to the Specifications
- Know the Contract Type – Specification 4-1
  - Conventional ◆
  - Lump Sum ◆
  - Design-Build ◆
- Know the Plans
- Know the Procedures
  - *CPAM*
  - *Review & Administrative Manual*

<https://www.fdot.gov/construction>  
Documents and Publications > Manuals

# WHAT ARE SOME OF THE CONTRACT DOCUMENTS?

- Contract
- Modifications such as Supplemental Agreements & Work Orders
- The Plans

<https://www.fdot.gov/programmanagement/>  
Under Office Divisions > Specifications

- Standard Specifications
- Supplemental Specifications
- Developmental Specifications
- Technical Special Provisions
- Special Provisions

<https://www.fdot.gov/design>  
Documents and Publications > Standard Plans

- Standard Plans



# ORDER OF PRECEDENCE

Specification 5-2



# WHAT ARE SOME OF HELPFUL RESOURCES?

- Construction Project Administration Manual (CPAM)
- Review & Administration Manual (RAM)
- CTQP Final Estimates Level II Manual ◆
- Final Estimates External Website ◆
  - Final Estimates Guidelist
- Final Estimates SharePoint Site ◆

<https://www.fdot.gov/programmanagement/>

Documents, Publications & Applications > Basis of Estimates (BOE)

- Basis of Estimates (BOE) Manual

# POLL QUESTION

Which resources below are binding contract documents **for the Contractor?**

- Basis of Estimates Manual
- Construction Project Administration Manual
- Review and Administration Manual
- Final Estimates Guidelist
- None

# HOW ARE PAY ITEMS PAID?

- **Plan Quantity**
  - Designer Quantity

## **9-3.2 Payment Based on Plan Quantity:**

**9-3.2.1 Error in Plan Quantity:** As used in this Article, the term “substantial error” is defined as the smaller of (1) or (2) below:

1. a difference between the original plan quantity and final quantity of **more than 5%**,
2. a change in quantity which causes a change in the amount payable of **more than \$5,000.**

- **Lump Sum**
  - Same as above
  - Secondary Units are considered
- **Final Measure**
  - Certified Quantities
    - Contractor Measures & Resident Office Spot Checks
  - Final Measure
    - Resident Office Measures

# UNITS OF MEASURE ASSIGNED TO PAY ITEMS

- **Units of Measure:**
  - 1 Lump Sum
  - Per Each, Each Day
  - Length - Linear Feet
  - Area - Square feet, Square Yards, Acre
  - Volume - Cubic Feet, Cubic Yards
  - Weight - Lbs, Tons
- This information is found in the Specifications under Method of Measurement ♦
- The Basis of Estimates Manual also has this information, as well as the accuracy required for each unit of measure in BOE Chapter 2.

# MONTHLY ESTIMATE PROCESS

- Estimate Cut-Off Dates
  - All on Sunday
  - Typically 3<sup>rd</sup> Sunday
- Monday – Friday is considered Estimates Week

**2022**

January 16, 2022

February 20, 2022

March 20, 2022

April 17, 2022

May 15, 2022

June 12, 2022 (2nd Sunday)

July 17, 2022

August 21, 2022

September 18, 2022

October 16, 2022

November 13, 2022 (2nd Sunday)

December 18, 2022

# SURVEY TIME

**Which of the following are reasons the June, November, and December estimate cutoff dates are not on the typical 3<sup>rd</sup> Sunday?**

- End of the Fiscal Year
- Dates are in the Standard Specs
- Avoid the Thanksgiving Holidays
- Avoid the Christmas Holidays

# MONTHLY ESTIMATE PROCESS



## **CONTRACTOR:**

Submit the following (minimum):

- **Certification of Quantities Forms, if applicable**
  - MOT, Signs, etc.
  - Striping
  - Asphalt and Bituminous Material
  - Fuel (LS/DB Only)
- **Certification Disbursement of Previous Periodic Payment to Subcontractors**
  - All estimates except the first
- **Construction Compliance with Specs & Plans**
- **Where to find this information?**
  - CPAM 5.11 and 5.14

<https://www.fdot.gov/construction>  
Documents and Publications > Manuals



# MONTHLY ESTIMATE PROCESS



## **RESIDENT OFFICE:**

- **Verify Quantities are Reasonable**
  - Remember it's an Estimate not an Invoice
- **Verify the Contractor's Certifications have been filled out correctly**
  - Are Digital Signatures Valid?
  - Have digital and wet-ink signatures been mixed?
  - Are forms in the proper format?
- **Generate the Estimate in SiteManager**
  - Includes Adjustments



ESTIMATE CREATED: 11/16/16

STATE OF FLORIDA DEPARTMENT OF TRANSPORTATION

DESPJ11-1 PAGE 1

COSECT FIN. PROJ.# MANDST JOB NO.

TRANSPORT/SITEMANAGER PAY ESTIMATE

CONTR. TYPE: CLS CONSTR LUMP SUM

46110 435518-1-52-01 03 -

PROGRESS EST.NO. 0001

C.C. NO. 314

CONTRACT NO. T3595 ENGLISH

PROG. NUMBER - 5202

PANAMA CITY CONSTRUC

LETTING DATE 07/27/16

F.A.P. NO. 8886871A

NO. OF JOBS ON ESTIMATE 01 / 02

CONTRACTOR: F591683951003 C. W. ROBERTS CONTRACTING, INC.

ESTIMATE PERIOD END DATE: 11/13/16

S.R. NO. SR 391 IN BAY CO.

CONTRACTOR: F591683951003

DESCRIPTION: SR 391 AIRPORT ROAD FROM SR 75 (US 231) TO HARRISON AVENUE

C. W. ROBERTS CONTRACTING, INC.

TALLAHASSEE

FL

FROM COMMENCEMENT OF WORK OCT 12, 2016 TO NOV 13, 2016 INCLUSIVE

ITEM DESCRIPTION	ITEM NUMBER	CO NBR	UNIT	QUANTITIES					UNIT PRICE	AMOUNT TO-DATE
				PLAN	PREVIOUS	THIS EST.	TO-DATE	%		
LUMP SUM CONTRACT, ALTERNATIVE BIDDING	0999 2		LS	1.000	0.000	+0.542	0.542	54	183,958.2200	99,705.36

# LUMP SUM CONTRACT ESTIMATE

# **PAY ITEM ADJUSTMENTS**

## **Types of Pay Item Adjustments**

- Contract Adjustments
- Line Item Adjustments

# PAY ITEM ADJUSTMENTS (CONTRACT ADJUSTMENTS)

- A+B Incentive-Disincentive
- Arbitration Orders
- Cash Retainage Withheld
- Court Orders
- Damage Recovery
- **Incentive-Disincentive**
- Liquidated Damages (Maintenance contract Use ONLY)
- Lane Rental Incentive-Disincentive
- Liquidated Savings
- No Excuse Bonus
- Producer Price Index
- Other Adjustment
- Retainage Previously Released
- Retainage (Non-system)
- Revenue Loss Penalty
- Settlement Costs
- Steel Price Adjustment

# PAY ITEM ADJUSTMENTS (LINE ITEM ADJUSTMENTS)

- Asphalt Content
- Asphalt Density
- Directed Source Aggregate Price Adjust.
- Temp. Attenuator/Crash Cushion Repair
- Asphalt Sieve Failures
- **Bituminous**
- Contingency-Participating Work Order Amt.
- Contingency-Non-Part Work Order Amt.
- **Composite Pay Factor**
- Concrete Pavement Grinding Incentive
- Concrete Strength Adjustment
- **Fuel Adjustment (Diesel)**
- **Fuel Adjustment (Gasoline)**
- **Material Price Adjustment**
  - **Steel**
  - **Aluminum**
  - **PVC**
  - **Copper**
- Lost or Missing Samples
- Laser Profiler Acceptance Adjustment
- Left in Place at Reduced Pay
- Adj. for deleted work - LS jobs only
- Material Discrepancy Payment Adjustment
- Invoice Matching Adjustment
- Pavement Joint Smoothness Incentive
- PRICE
- Resolution Testing Costs
- Straightedge Adjustment
- Stockpiled Materials Adjustment
- Stockpiled Materials Closure
- Stockpiled Materials Initial Payment
- Substandard Item
- Thickness Adjustment

COMPONENTS OF CONTRACT PLANS SET

ROADWAY PLANS  
STRUCTURES PLANS

A DETAILED INDEX APPEARS ON THE  
KEY SHEET OF EACH COMPONENT

INDEX OF ROADWAY PLANS

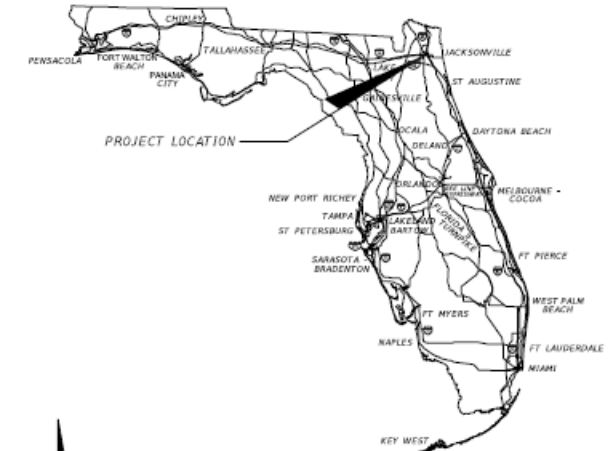
SHEET NO.	SHEET DESCRIPTION
1	KEY SHEET
2	SIGNATURE SHEET
2A	SIGNATURE SHEET
2B	SIGNATURE SHEET
2C	SIGNATURE SHEET
2D	SIGNATURE SHEET
2E	SIGNATURE SHEET
2F	SIGNATURE SHEET
3 - 4	SUMMARY OF PAY ITEMS
5 - 6A	TYPICAL SECTIONS
SQ 1 - SQ 4	SUMMARY OF QUANTITIES
7	PROJ. NOTES, CONTROL PTS & SUM OF DR STR
8	ROADWAY PLAN
9	ROADWAY PROFILE
10	CROSS SECTIONS
11	EROSION AND SEDIMENT CONTROL PLAN
12	TRAFFIC CONTROL PLAN
13	TRAFFIC CONTROL PLAN (RAMP CLOSURE)
14	TRAFFIC CONTROL PLAN (DETOUR PLAN)
15	TRAFFIC CONTROL PLAN (PEDESTRIAN DETOUR PLAN)
16	SIGNING AND PAVEMENT MARKING PLAN
17	END PROJECT
18	END BRIDGE #720094
19	M.P. 15.569

OF REVISED INDEX DRAWINGS  
X NO. 600 SHEET NO. 1 to 12 of 12

STATE OF FLORIDA  
DEPARTMENT OF TRANSPORTATION  
**AS-BUILT PLANS FOR**  
**CONTRACT PLANS**

FINANCIAL PROJECT ID 430417-1-52-01

DUVAL COUNTY (72040)  
STATE ROAD NO. SR10A



ROADWAY SHOP DRAWINGS  
TO BE SUBMITTED TO:

NATHANIEL R WILLBUR  
INFRASTRUCTURE ENGINEERS, INC.  
2511 ST. JOHNS BLUFF SOUTH, SUITE 103  
JACKSONVILLE, FL 32246

PLANS PREPARED BY:

INFRASTRUCTURE ENGINEERS, INC.  
2511 ST. JOHNS BLUFF SOUTH, SUITE 103  
JACKSONVILLE, FL 32246  
PHONE (407) 957-1660  
FAX: (407) 957-8744  
FL CERT. NO. 6876  
VENDOR NO. 593221706001  
CONTRACT NO. C-9856

NOTE: THE SCALE OF THESE PLANS MAY  
HAVE CHANGED DUE TO REPRODUCTION.

NAME OF CONTRACTOR: Brothers' Construction Inc.  
NAME OF CONSULTANTS INVOLVED: None  
DISTRICT 2 SECRETARY: Greg Evans, P.E.  
RESIDENT ENGINEER: Scott Lent, P.E.  
PROJECT OVERSITE: Robert Gurganious  
DATE WORK STARTED: 09/21/2015  
DATE WORK FINAL ACCEPTANCE OR COMPLETED: 09/16/2016

GOVERNING STANDARDS AND SPECIFICATIONS:

Florida Department of Transportation, 2015 Design Standards and revised Index Drawings as appended herein, and July 2015 Standard Specifications for Road and Bridge Construction, as amended by Contract Documents.

For Design Standards click on the "Design Standards" link at the following web site:  
<http://www.dot.state.fl.us/rddesign/>

For the Standard Specifications for Road and Bridge Construction click on the "Specifications" link at the following web site:  
<http://www.dot.state.fl.us/specificationsoffice/>

REVISIONS:

NO.	DATE	DESCRIPTION
1	10/22/15	ADDED SHEET NO. 2A AND REVISED STRUCTURES KEY SHEET
2	12/22/15	ADDED SHEET NO. 2B REVISED SHEETS 7, 8 AND 9 AND REVISED STRUCTURES KEY SHEET
3	2/15/15	ADDED SHEET NO. 2C REVISED SHEETS 1, SQ 2, 6, 8-11 AND STRUCTURES KEY SHEET
4	4/4/16	ADDED SHEET NO. 2D, 6A REVISED SHEETS 1, SQ 1-2, 6 AND STRUCTURES KEY SHEET
5	8/15/16	ADDED SHEET NO. 2E AND 14A REVISED SHEETS 1, 5, 6, 6A, 50-1, 50-2, 50-3, 50-4 8-12, 14, 17 REVISED STRUCTURE SHEETS B-01, B01-01, B1-15, B1-30, B1-33 - B1-36, B1-39, B1-37, AND B1-40
6	9/15/16	ADDED SHEET NO. 2F REVISED SHEET 1 REVISED STRUCTURE SHEETS B-01, B1-33, B1-34, B1-35, AND B1-37

PROJECT LENGTH IS BASED ON 1/4 OF SURVEY

LENGTH OF PROJECT		
	LINEAR FEET	MILES
ROADWAY	0.00	0.000
BRIDGES	26.40	0.005
NET LENGTH OF PROJECT	26.40	0.005
EXCEPTIONS	0.00	0.00
GROSS LENGTH OF PROJECT	26.40	0.005

FDOT PROJECT MANAGER: ERIC SHIMER, P.E.

KEY SHEET REVISIONS	
DATE	DESCRIPTION
10/22/15	ADDED SHEET NO. 2A
12/22/15	ADDED SHEET NO. 2B
2/15/16	ADDED SHEET NO. 2C
	UPDATE FAC RULE
4/4/16	ADDED SHEET NO. 2D AND SHEET 6A
8/15/16	ADDED SHEET NO. 2E AND 14A
9/15/16	ADDED SHEET NO. 2F

ROADWAY PLANS  
ENGINEER OF RECORD: NATHANIEL R. WILLBUR, P.E.

P.E. NO.: 72236

FISCAL YEAR	SHEET NO.
16	1

**AS-BUILT  
PLANS**

# AS-BUILT PLAN MARKUPS

Completed as pay items are completed (preferably monthly).

## Any changes are:

- Redlined or
- If Engineer of Record has revised sheets, the original will be VOIDED and the correct sheet placed behind it, except for a revised Key Sheet will be placed in front of the voided sheet.

**VOID**

## Marking convention:

- Resident Office: **red**
- Resident Office Quality Assurance: **orange (if used)**
- District Final Estimate Initial Reviewer (QC): **blue**
- District Final Estimate Final Reviewer (PAR): **green**



# AS-BUILT PLANS

# KEY SHEET

## COMPONENTS OF CONTRACT PLANS SET

ROADWAY PLANS  
SIGNING AND PAVEMENT MARKING PLANS  
SIGNALIZATION PLANS

A DETAILED INDEX APPEARS ON THE  
KEY SHEET OF EACH COMPONENT

### INDEX OF ROADWAY PLANS

SHEET NO.	SHEET DESCRIPTION
1	KEY SHEET
2-3	SIGNATURE SHEET
4	SUMMARY OF PAY ITEMS
5	TYPICAL SECTION
6	TYPICAL SECTION DETAILS
50-1 - 50-47	SUMMARY OF QUANTITIES
7 - 8	SUMMARY OF DRAINAGE STRUCTURES
9	OPTIONAL MATERIALS TABULATION
10 - 11	BENCHMARKS
12 - 13	REFERENCE POINTS
14	PROJECT NOTES
15 - 40	ROADWAY PLAN
41 - 42	DRAINAGE STRUCTURES
43 - 44	DRAINAGE DETAILS
45 - 47	DRIVEWAY CROSS SECTIONS
48 - 50	STORMWATER POLLUTION PREVENTION PLAN
51 - 65	TEMPORARY TRAFFIC CONTROL PLAN
66 - 67	SUMMARY OF VERIFIED UTILITIES
68 - 71	POTENTIAL CONTAMINATION SITES

### LIST OF REVISED INDEX DRAWINGS

INDEX NO.	SHEET NO.
600	1-12 OF 12
619	1-2 OF 2
11200	3 OF 3
11860	4 OF 8
17302	1 OF 1
17346	1-2 AND 13-14
17347	1-5 OF 5
17727	2 OF 2
17841	1 OF 1

RAILROAD CROSSING NO. 624492-H  
(SR 35/SR 555)  
CSX TRANSPORTATION, INC.  
RRMP SV 851.17  
STA. 666+40.00 @ SURVEY SR 35/ SR 555



### COMPONENT INDEX

JACK AND BORE AS-BUILT DRAWINGS  
SIGN SHOP DRAWINGS

EDMS DOC # \_\_\_\_\_  
EDMS DOC # \_\_\_\_\_

### GOVERNING STANDARDS AND SPECIFICATIONS:

Florida Department of Transportation, 2015 Design Standards and revised Index Drawings as appended herein, and July 2015 Standard Specifications for Road and Bridge Construction, as amended by Contract Documents.

For Design Standards click on the "Design Standards" link at the following web site:  
<http://www.dot.state.fl.us/rddesign/>

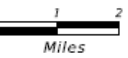
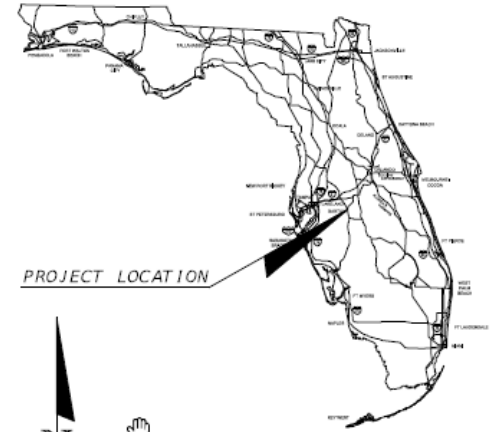
For the Standard Specifications for Road and Bridge Construction click on the "Specifications" link at the following web site:  
<http://www.dot.state.fl.us/specificationsoffice/>

## STATE OF FLORIDA DEPARTMENT OF TRANSPORTATION

### FINAL AS-BUILT PLANS ~~CONTRACT PLANS~~

FINANCIAL PROJECT ID 431278-1-52-01  
(FEDERAL FUNDS)  
POLK COUNTY (16030 AND 16030-301)  
STATE ROAD NO. 35/555

CONSTRUCTION CONTRACT NO. T1623



ROADWAY SHOP DRAWINGS  
TO BE SUBMITTED TO:  
ANDRA G. DIGGS II, P.E.  
FLORIDA DEPARTMENT OF TRANSPORTATION  
DISTRICT ONE OFFICE  
801 N. BROADWAY AVENUE  
BARTOW, FL 33830-3809

PLANS PREPARED BY:  
FLORIDA DEPARTMENT OF TRANSPORTATION  
DISTRICT ONE OFFICE  
801 N. BROADWAY AVENUE  
BARTOW, FL 33830-3809  
(863) 519-2300

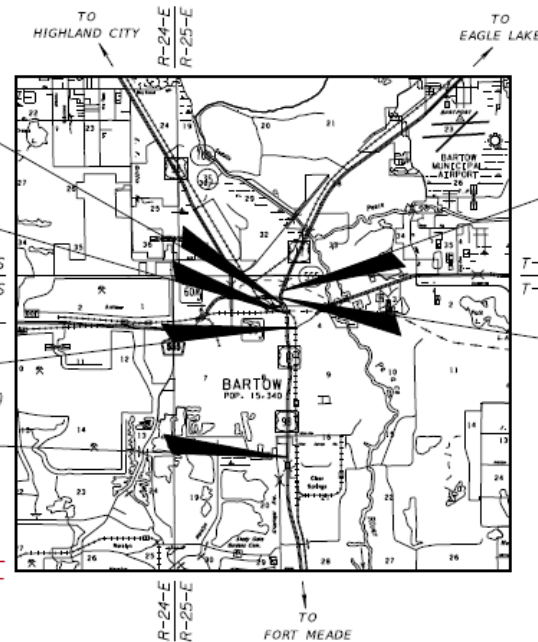
NOTE: THE SCALE OF THESE PLANS MAY HAVE  
CHANGED DUE TO REPRODUCTION.

NAME OF PRIME CONTRACTOR: \_\_\_\_\_  
NAME OF PRIME CONSULTANT: \_\_\_\_\_  
DISTRICT SECRETARY: \_\_\_\_\_  
RESIDENT ENGINEER: \_\_\_\_\_  
FDOT PROJECT MANAGER: \_\_\_\_\_  
PROJECT ADMINISTRATOR: \_\_\_\_\_  
DATE WORK STARTED: \_\_\_\_\_  
DATE WORK FINAL ACCEPTED: \_\_\_\_\_

ROADWAY PLANS  
ENGINEER OF RECORD: MELISSA M. GRIMES, P.E.

P.E. NO. 72156

FISCAL YEAR	SHEET NO.
16	1



END EXCEPTION  
STA. 668+44.33  
MP 0.323

BEGIN EXCEPTION  
STA. 666+02.69  
MP 0.269

STA. 651+81.09  
MP 17.918 END (16030000)  
MP 0.000 BEGIN (16030301)

BEGIN PROJECT (16030000)  
STA. 548+37.23  
MP 15.959

END PROJECT (16030000)  
STA. 684+38.74  
MP 18.532

T-29-S TO LAKE WALES  
T-30-S

STA. 678+63.33 =  
STA. 98+16.05  
MP 0.508 END (16030301)  
MP 18.423 BEGIN (16030000)

### LENGTH OF PROJECT

	LINEAR FEET	MILES
ROADWAY	13,433.36	2.544
BRIDGES	0.000	0.000
NET LENGTH OF PROJECT	13,433.36	2.544
EXCEPTIONS	168.15	0.032
GROSS LENGTH OF PROJECT	13,601.51	2.576

### KEY SHEET REVISIONS

DATE	DESCRIPTION

FDOT PROJECT MANAGER: M. WAYNE SHELTON

# AS-BUILT PLANS

- Contractor's plans have a specific placeholder in EDMS. No need to insert in the Final As-built Plans.

DOCUMENT GROUP	DOCUMENT TYPE
CONST21 AS-BUILT PLANS	CONST198 All Plan Sets
	CONST174 Architectural Plans
	CONST186 ITS Plans
	CONST175 Landscaping Plans
	CONST176 Lighting Plans
	<b>CONST177 Miscellaneous Plans</b> <i>As-Built Plans from Contractor</i>
	CONST178 Permanent Traffic Monitor Site Plans
	CONST179 Roadway Plans <i>Asphalt Roadway - As Built Pavement Data (Form 700-050-12)</i>
	<b>CONST185 Shop Drawings</b>
	CONST180 Signalization Plans
	CONST181 Signing and Pavement Marking Plans
	CONST182 Structures
	CONST202 Toll Facility Plans
CONST183 Utility Plans	

## KEY SHEET - CONTRACTOR'S PLANS & SHOP DRAWINGS


- Reference the EDMS number on the Key Sheet instead.

# AS-BUILT PLANS

# SIGNATURE SHEET - ENGINEER(S) OF RECORD

THIS DOCUMENT HAS BEEN DIGITALLY SIGNED & SEALED BY:

Digitally signed by Patrick W Hatton  
Date: 2016.10.05 08:37:02 -04'00'



**Patrick W Hatton**

PRINTED COPIES OF THIS DOCUMENT ARE NOT CONSIDERED SIGNED & SEALED. THE SIGNATURE MUST BE VERIFIED ON THE ELECTRONIC DOCUMENTS.

SRD, INC.  
3812 COCONUT PALM DR., STE. 100  
TAMPA, FL 33619  
CERTIFICATION OF AUTHORIZATION: 00008828  
PATRICK W, HATTON, P.E. NO. 72302

THE ABOVE NAMED PROFESSIONAL ENGINEER SHALL BE RESPONSIBLE FOR THE FOLLOWING SHEETS IN ACCORDANCE WITH RULE 61G15-23.004, F.A.C.

**ROADWAY PLANS:**

SHEET NO.	SHEET DESCRIPTION
1	KEY SHEET
2	SIGNATURE SHEET
3 - 5	SUMMARY OF PAY ITEMS
6 - 10	DRAINAGE MAP
11 - 12	TYPICAL SECTIONS
13 - 19	TYPICAL SECTION DETAILS
50-1 - 50-34	SUMMARY OF QUANTITIES
10	SUMMARY OF DRAINAGE STRUCTURES
19 - 20	OPTIONAL MATERIALS TABULATION
21	PROJECT NOTES
22 - 24	REFERENCE POINTS
25 - 27	ROADWAY PLANS
48 - 50	INTERSECTION DETAIL
51 - 55	DRAINAGE STRUCTURES
56 - 57	SPECIAL DETAILS
58 - 116	CROSS SECTIONS
117 - 162	DRIVEWAY HALF SECTION
143 - 145	STORM WATER POLLUTION PREVENTION PLAN
146	TRAFFIC CONTROL GENERAL NOTES
147 - 149	TEMPORARY TRAFFIC CONTROL PLAN
150	SUMMARY OF VERIFIED UTILITIES
151 - 173	UTILITY ADJUSTMENT SHEETS

- When original plans are extracted to create the Final As-Built Plans, the EOR digital signature will disappear.
- This is acceptable.

REVISIONS				SRD, Inc. 3812 Coconut Palm Dr., Ste. 100 Tampa, FL 33619 Phone No (813) 621-2159 Certificate No. 00008828 Patrick Wayne Hatton, P.E.	STATE OF FLORIDA DEPARTMENT OF TRANSPORTATION			<b>SIGNATURE SHEET</b>	SHEET NO. 2
DATE	DESCRIPTION	DATE	REVISION/NO.		ROAD NO.	COUNTY	FINANCIAL PROJECT ID		
				574	HILLSBOROUGH	434736-452-01			

# AS-BUILT PLANS

## DISCLAIMER STATEMENTS

Resident Office applies a disclaimer when the plans are completed:

- No changes

If **Final As-Built Plan** sets have no changes, the RE shall digitally sign and seal the **Final As-Built Signature Sheet(s)** with a disclaimer that states:

*"This project was constructed in substantial compliance with these plans as provided by the Engineer of Record. These plans reflect "as-built" conditions and no changes were made to the plan sheets."*

- If changes have been done

Disclaimer to use when changes have been made:

*"The above named professional engineer shall be responsible for the following changes, indicated in redline revision, in accordance with Rule 61G15-23.004, F.A.C. This project was constructed in substantial compliance with these plans as provided by the Engineer of Record."*

# AS-BUILT PLANS

# SIGNATURE SHEETS - RESIDENT ENGINEER

**Ashley W Anderson**  
Digitally signed by Ashley W Anderson  
 Date: 2019.10.07 09:38:21 -04'00'  
 STATE OF FLORIDA, PROFESSIONAL ENGINEER, LICENSE NO. 123456  
 THIS ITEM HAS BEEN DIGITALLY SIGNED AND SEALED BY Ashley Anderson, PE ON THE DATE INDICATED HERE  
 PRINTED COPIES OF THIS DOCUMENT ARE NOT CONSIDERED SIGNED AND SEALED AND THE SIGNATURE MUST BE VERIFIED ON ANY ELECTRONIC COPIES.  
 FLORIDA DEPARTMENT OF TRANSPORTATION  
 805 SUWANNEE STREET  
 TALLAHASSEE, FL 32303  
 ASHLEY ANDERSON, P. E. NO. 99999

This project was constructed in substantial compliance with these plans as provided by the Engineer of Record. These plans reflect "as-built" conditions and no changes were made to the plan sheets.

**Digital Signature**

**Signature Appearance**  
(including Engineer Name and Address)

**Statement of Disclaimer**

**List of Responsible Sheets**

**Reviewer Information**

**Ashley W Anderson**  
Digitally signed by Ashley W Anderson  
 Date: 2020.02.12 12:36:26 -05'00'  
 STATE OF FLORIDA, PROFESSIONAL ENGINEER, LICENSE NO. 99999  
 THIS ITEM HAS BEEN DIGITALLY SIGNED AND SEALED BY Ashley Anderson, PE ON THE DATE INDICATED HERE  
 PRINTED COPIES OF THE DOCUMENT ARE NOT CONSIDERED SIGNED AND SEALED AND THE SIGNATURE MUST BE VERIFIED ON ANY ELECTRONIC COPIES.  
 ROADWAY ENGINEERS, INC.  
 123 MAIN STREET  
 TALLAHASSEE, FL 32303  
 ASHLEY ANDERSON, P. E. NO. 99999

The above named professional engineer shall be responsible for the following changes, indicated in redline revision, in accordance with Rule 61G15-23.004, F.A.C. This project was constructed in substantial compliance with these plans as provided by the Engineer of Record.

**ROADWAY PLANS**

SHEET NO.	DESCRIPTION OF CHANGE
1	PROJECT DETAILS
4-6	BASE THICKNESS CHANGED
SQ1-25	ADDED FINAL QUANTITIES
34	AS-BUILT OPTIONAL MATERIALS INDICATED
66	SIDEWALK REALIGNMENT

**SIGNING & PAVEMENT MARKING PLANS**

S2-S4	ADDED FINAL QUANTITIES
-------	------------------------

**NO CHANGES**

**WITH CHANGES**

Date	Name	Position (Title)	Review Type, If Applicable
<b>RESIDENT OFFICE</b>			
10/25/2017	Jane Doe	30% Review	QA
10/18/2018	John Doe	80% Review	QA
10/31/2019	Joe Smith	90% Review	QA
	Jimmy Smith	Inspector	
	Jill Brown	Contract Support Specialist	
	Ashley Anderson	Senior Project Engineer	
<b>DISTRICT OFFICE</b>			
11/08/2018	Peter Piper	IA Review (Jill Brown)	
11/08/2019	Peter Piper	80% Review	QC OTHER

REVISIONS				ROADWAY ENGINEERS, INC. 123 MAIN STREET TALLAHASSEE, FL 32303	STATE OF FLORIDA DEPARTMENT OF TRANSPORTATION			FINAL "AS-BUILT" SIGNATURE SHEET	SHEET NO. 2A
DATE	DESCRIPTION	DATE	DESCRIPTION		ROAD NO.	COUNTY	FINANCIAL PROJECT ID		
				999	LEON	123456-1-52-01			

# AS-BUILT PLANS

## SUMMARY OF QUANTITY SHEETS

- Effective July 2014, no Computation Books
- Plan Summary Boxes for each pay item
- Table where both original and final quantities are documented in the Plans
- Check marks are used when quantity does not change

SUMMARY OF EARTHWORK

PAY ITEM NO.	PAY ITEM DESCRIPTION	CY		DESIGN NOTES	CONSTRUCTION REMARKS
		P	F		
0120 1	REGULAR EXCAVATION				
	SR 600	1668.00			
	TOTAL:	1668.00	1830.00		See EDMS # 1165422, pages 8 and 18. See plan sheet 27A for details on SQ-6A, Plan Quantity Analysis.
0120 5	CHANNEL EXCAVATION				
	LAKE PARKER DRAINAGE	507.00	864.00		
	SADDLE CREEK	1080.00	969.00		
	TOTAL:	1587.00	1833.00		EDMS # 1169176 for Lake Parker Drainage, and EDMS # 1169178 for Saddle Creek.
0120 6	EMBANKMENT				
	SR 600	3178.00	✓		
	STA. 1231+99.10 to STA. 1232+48.38 (RT./LT.) BOX CULVERT	3364.00			
	STA. 1233+01.38 to STA. 1233+42.44 (RT./LT.) BOX CULVERT	2699.00			
	TOTAL:	9241.00	9381.00		See EDMS # 1165422, pages 8 and 18. See plan sheets 27A and 27B for details on SQ-6B, Plan Quantity Analysis.

# WHAT IF.....

If no changes are made to the Designer's plans, BUT red check marks are included on the Summary of Quantity sheets to show the Designer's quantities were installed.....

**Do these markups to the plans require the disclaimer for changes?**

**NO**

UNIT	QUANTITY		TOTAL		RE AP AS
	P	F	P	F	
(LS)	1.00	✓	1.00	✓	
LB	940.00	✓	940.00	✓	
CY	80.00	✓	80.00	✓	
TN	630.00	✓	630.00	✓	
TN	130.00	✓	130.00	✓	
CY	40.00	✓	40.00	✓	

Disclaimer to use when changes have been made:

*"The above named professional engineer shall be responsible for the following changes, indicated in redline revision, in accordance with Rule 61G15-23.004, F.A.C. This project was constructed in substantial compliance with these plans as provided by the Engineer of Record."*

# AS-BUILT PLANS

## SUMMARY OF QUANTITY SHEETS

- Effective January 2021, no Plan Summary Boxes
- Estimated Quantities Report details design quantities ◆
- *Form 700-050-10, Pay Item Summary and Certification* details final quantities and references all back up information

<https://scoc.fdot.gov/>

Login > Reports > Central Office (Statewide Reports) > Estimates > Pay Item Summary and Certification

STATE OF FLORIDA DEPARTMENT OF TRANSPORTATION  
PAY ITEM SUMMARY AND CERTIFICATION SHEET

Contract Details

Contract: T5557

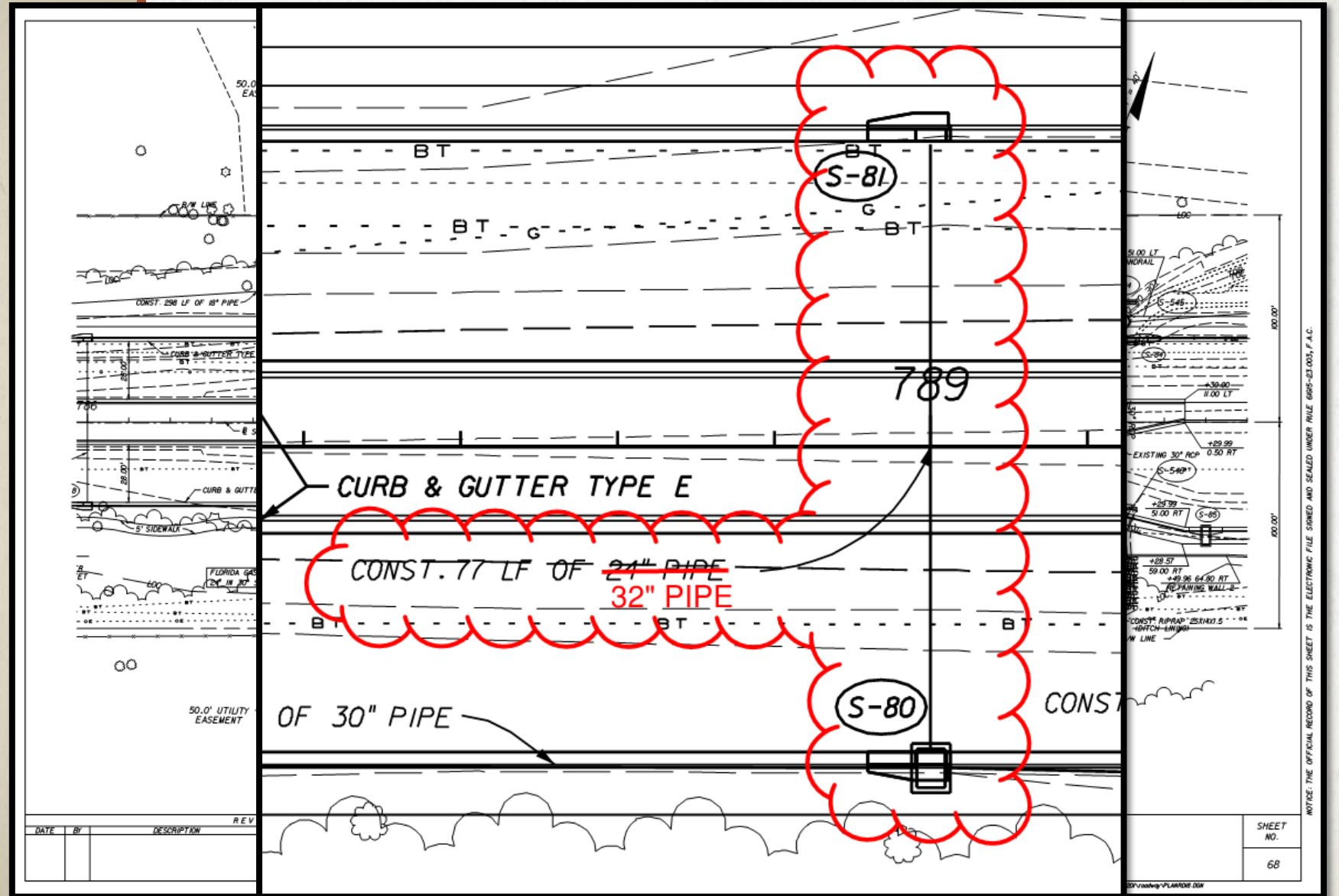
District: 05

Quantity	Unit	Item Code	SA #	Item Description	EDMS Doc /Page #	Unit Price	Item Paid Amount	Line Item Adjustment Amount	Total Item Paid Amount
<u>Related Details</u>									
Project: 24019615201		FAP: N/A	Project Work Paid: \$55,147,468.72						
1.000	LS	0101 1		MOBILIZATION ,24019615201 ,		\$5,300,000.0000	\$5,300,000.00	\$ .00	\$5,300,000.00
1.000	LS	0102 1		MAINTENANCE OF TRAFFIC ,24019615201 ,		\$1,050,000.0000	\$1,050,000.00	\$ .00	\$1,050,000.00
1.000	LS	0102 1	105	MAINTENANCE OF TRAFFIC		\$240,758.4700	\$240,758.47	\$ .00	\$240,758.47
1.000	LS	0102 2 1		SPECIAL DETOUR 1 ,24019615201 ,		\$250,000.0000	\$250,000.00	\$ .00	\$250,000.00



# AS-BUILT PLANS

## PLAN SHEETS



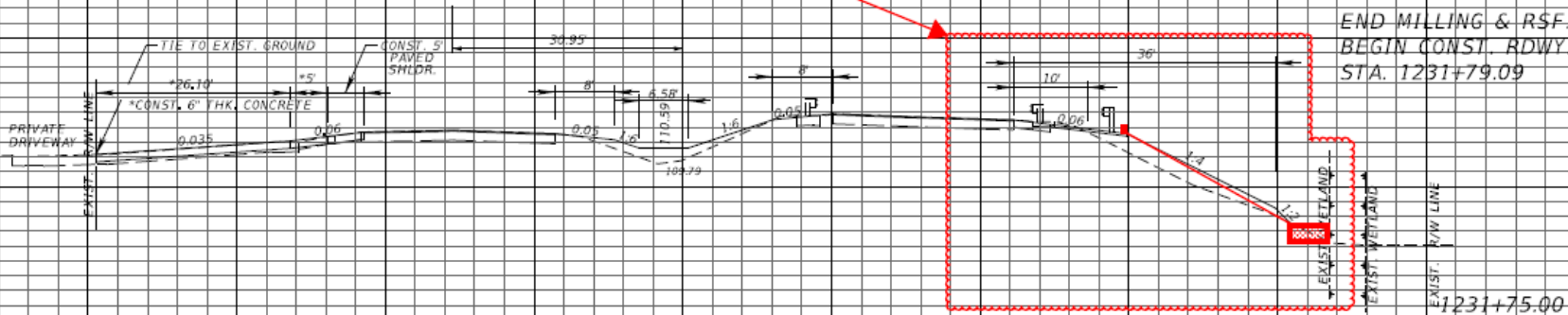
# AS-BUILT PLANS CROSS SECTION SHEETS

Asphalt curb and two concrete added flumes per WC No. 04. For additional information and back up documentation regarding the changes and details, please refer to EDMS # 1165422 and sheet no. 27A.

END MILLING & RSF, LT.  
BEGIN CONST. RDWY, LT.  
STA. 1231+98.66

END MILLING & RSF, RT.  
BEGIN CONST. RDWY, RT.  
STA. 1231+79.09

118  
116  
114  
112  
110  
108  
106  
104  
102  
100



8.50  
7.04  
37.26  
31.50

SCALE:  
1" = 20' HORIZONTAL  
1" = 10' VERTICAL

REVISIONS

DATE	DESCRIPTION	DATE	DESCRIPTION

ENGINEER OF RECORD:  
EDUARDO A. PONCE, P.E.  
P.E. LICENSE NUMBER 56818  
FLORIDA DEPARTMENT OF TRANSPORTATION  
801 N. BROADWAY AVENUE  
BARTOW, FL 33830-3809

STATE OF FLORIDA DEPARTMENT OF TRANSPORTATION		
ROAD NO.	COUNTY	FINANCIAL PROJECT ID
600	POLK	431208-1-52-01

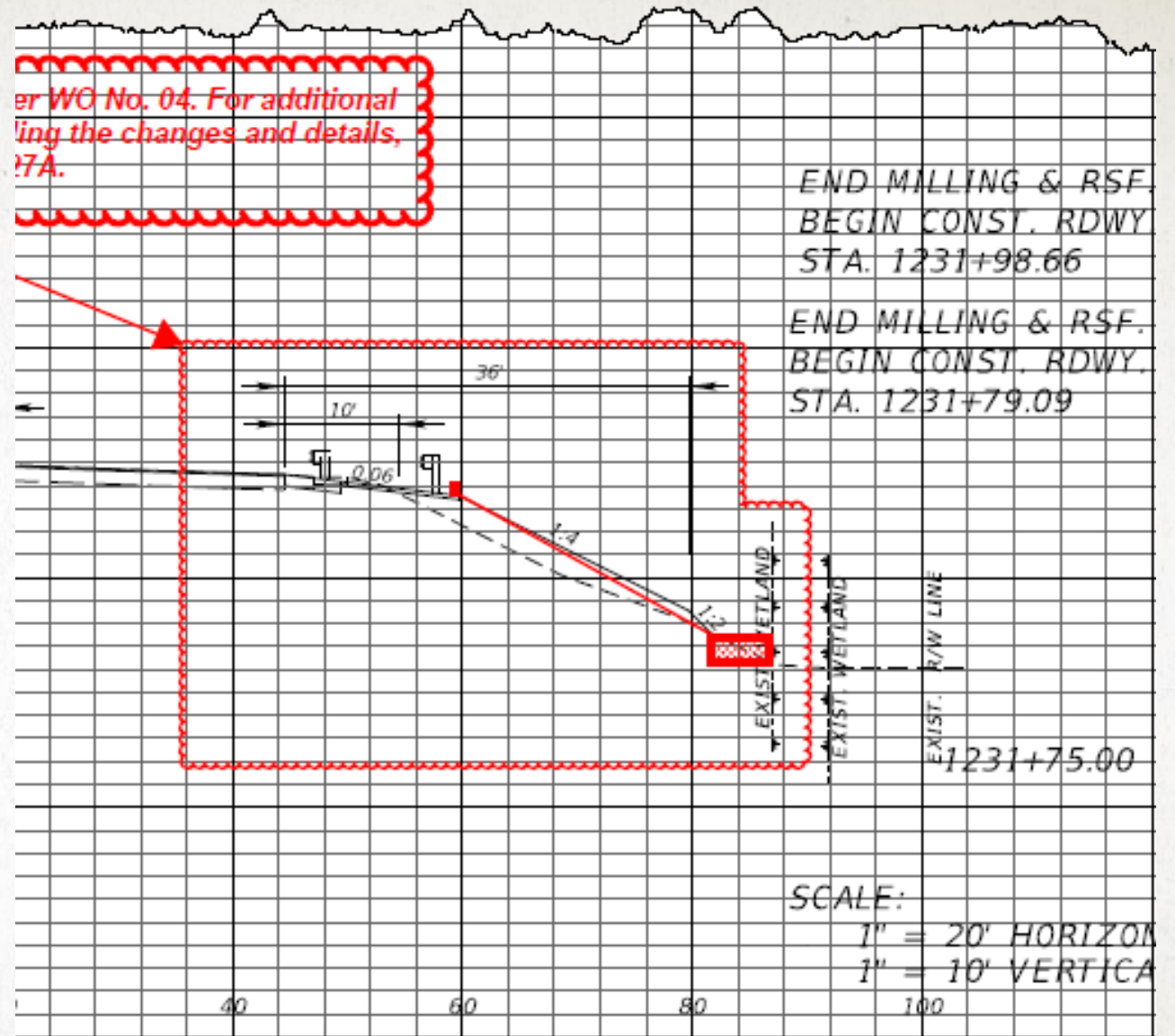
CROSS SECTIONS

SHEET NO.  
53

THE OFFICIAL RECORD OF THIS SHEET IS THE ELECTRONIC FILE DIGITALLY SIGNED

# AS-BUILT PLANS

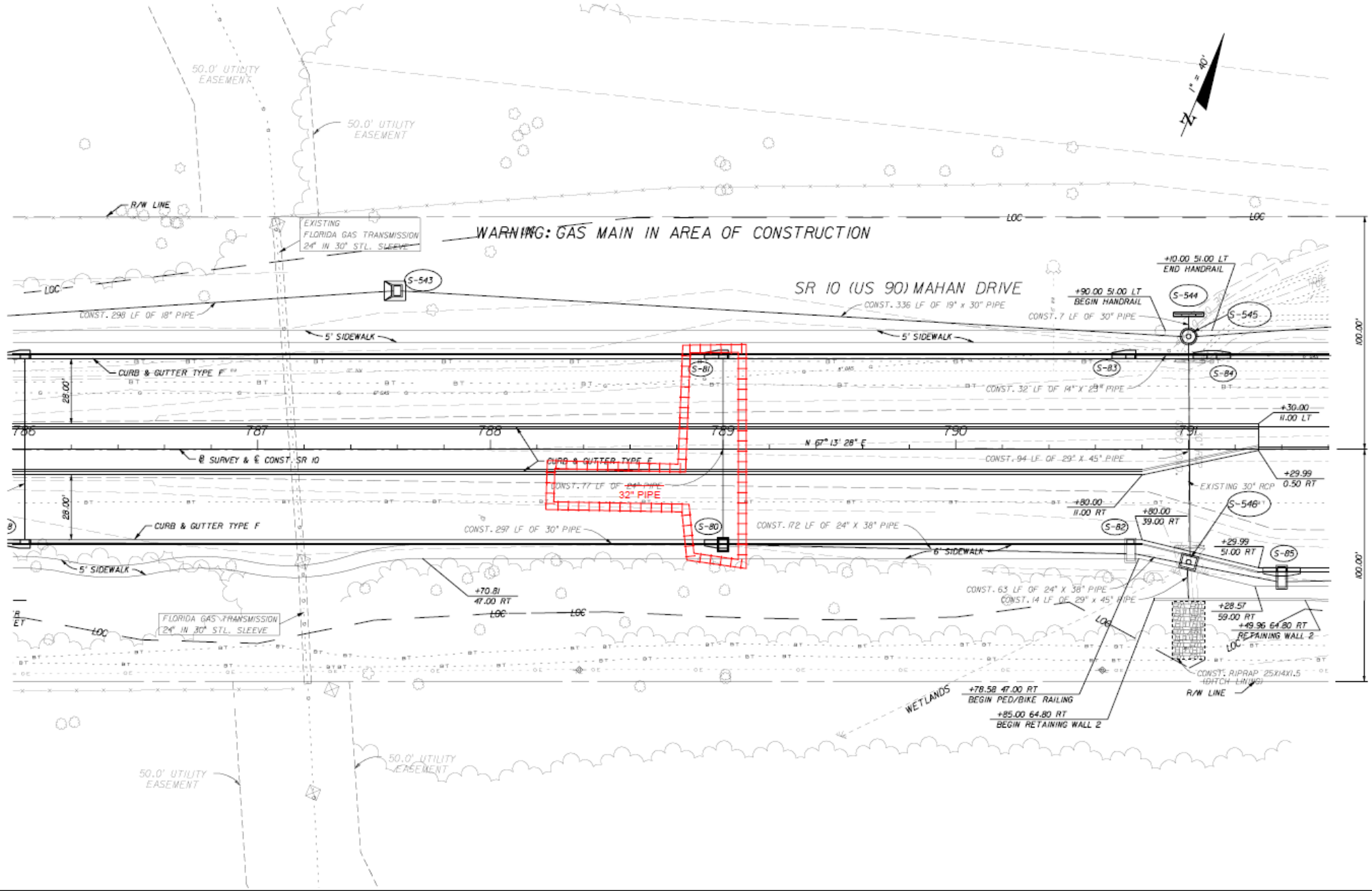
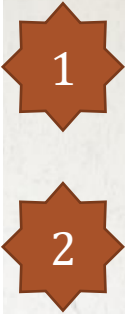
## CROSS SECTION SHEETS



STATE OF FLORIDA DEPARTMENT OF TRANSPORTATION		
ROAD NO.	COUNTY	FINANCIAL PROJECT ID
600	POLK	431208-1-52-01

CROSS SE

# SPOT THE ERRORS



NOTICE: THE OFFICIAL RECORD OF THIS SHEET IS THE ELECTRONIC FILE SIGNED AND SEALED UNDER RULE 68B5-23.003, F.A.C.

REVISIONS

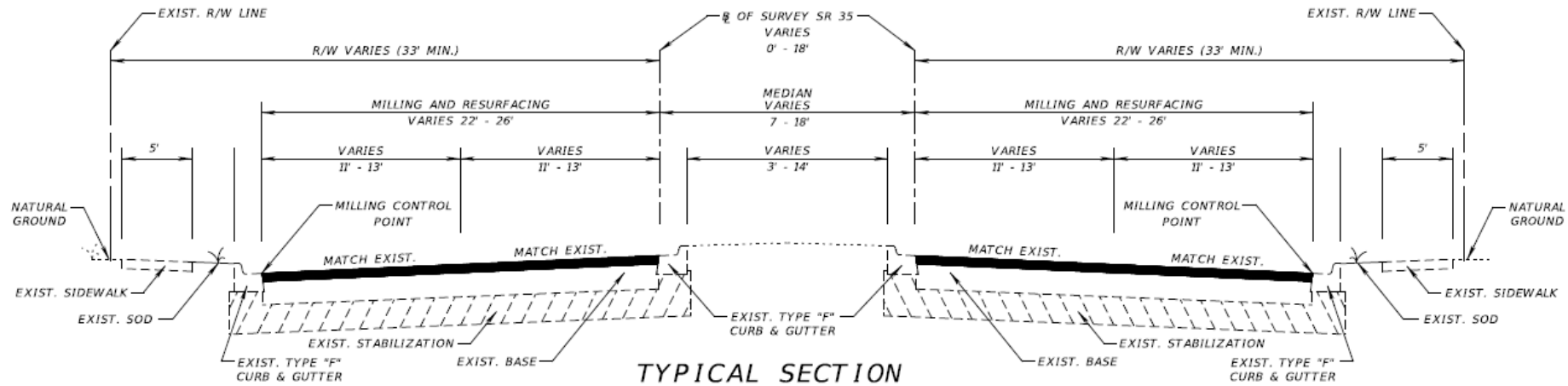
DATE	BY	DESCRIPTION	DATE	BY	DESCRIPTION

THE LPA GROUP INCORPORATED  
 Ryan Patterson, P.E. #62964  
 1320 Executive Center Dr. Suite 100  
 Tallahassee, FL 32301  
 Ph. (850) 205-0460 C.A. #4307

STATE OF FLORIDA DEPARTMENT OF TRANSPORTATION		
ROAD NO.	COUNTY	FINANCIAL PROJECT ID
10	LEON	219843-1-52-01

**PLAN**

SHEET NO.  
**68**



**TYPICAL SECTION  
SR 35/SR 555**

STA. 548+37.23 TO STA. 666+02.69  
 STA. 668+44.33 TO STA. **684+50**

**MAINLINE**

**MILLING RIGHT SIDE ROADWAY**

MILL EXISTING ASPHALT PAVEMENT (3.00" AVG. DEPTH)  
 RESURFACING RIGHT SIDE ROADWAY

TYPE SP STRUCTURAL COURSE (TRAFFIC C) (1.50")  
 AND FRICTION COURSE FC-12.5 (TRAFFIC C) (1.50") (PG 76-22, PMA)

**MILLING LEFT SIDE ROADWAY**

MILL EXISTING ASPHALT PAVEMENT (3.50" AVG. DEPTH)  
 RESURFACING LEFT SIDE ROADWAY

TYPE SP STRUCTURAL COURSE (TRAFFIC C) (2.00")  
 AND FRICTION COURSE FC-12.5 (TRAFFIC C) (1.50") (PG 76-22, PMA)

**TURNLANES, CROSSOVERS, SHOULDERS,  
SIDE STREETS, AND APPROACH SLABS**

**MILLING**

MILL EXISTING ASPHALT PAVEMENT (1.50" AVG. DEPTH)

**RESURFACING**

FRICTION COURSE FC-12.5 (TRAFFIC C) **(2")** 76-22, PMA)

**SR 60**

STA. 93+65.78 TO STA. 97+65.00 (LT.)  
 STA. 92+10.58 TO STA. 97+65.00 (RT.)

**MAINLINE, TURNLANES, AND RAMPS**

**MILLING**

MILL EXISTING ASPHALT PAVEMENT (1.50" AVG. DEPTH)

**RESURFACING**

FRICTION COURSE FC-12.5 (TRAFFIC C) (1.50") (PG 76-22, PMA)

**TRAFFIC DATA**

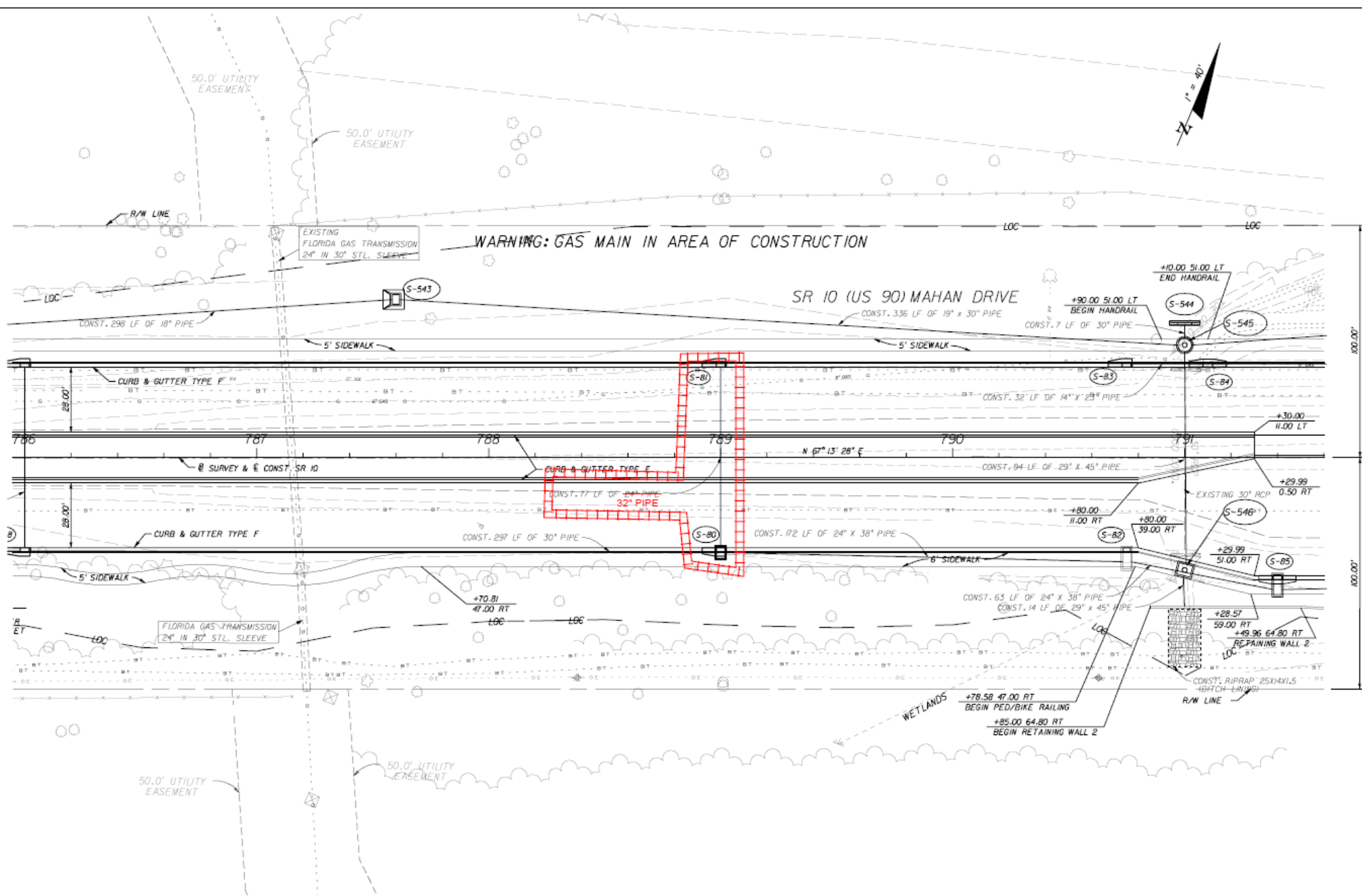
CURRENT YEAR = 2015 AADT = 14,500  
 ESTIMATED OPENING YEAR = 2016 AADT = 15,000  
 ESTIMATED DESIGN YEAR = 2035 AADT = 23,500  
 K = 9.0% D = 55.3% T = 18.2% (24 HOUR)  
 DESIGN HOUR T = 9.1%  
 DESIGN SPEED = 45 MPH

NOT TO SCALE

REVISIONS				ENGINEER OF RECORD: MELISSA M. GRIMES, P.E. P.E. LICENSE NUMBER 72156 FLORIDA DEPARTMENT OF TRANSPORTATION 801 N. BROADWAY AVENUE BARTOW, FL 33830-3809	STATE OF FLORIDA DEPARTMENT OF TRANSPORTATION			SHEET NO.  5
DATE	DESCRIPTION	DATE	DESCRIPTION		ROAD NO.	COUNTY	FINANCIAL PROJECT ID	
					35	POLK	431278-1-52-01	

**TYPICAL SECTION**

# SPOT THE ERRORS



1

2

REVISIONS					
DATE	BY	DESCRIPTION	DATE	BY	DESCRIPTION

THE LPA GROUP INCORPORATED  
 Ryan Patterson, P.E. #62964  
 1320 Executive Center Dr. Suite 100  
 Tallahassee, FL 32301  
 Ph. (850) 205-0460 C.A. #4307

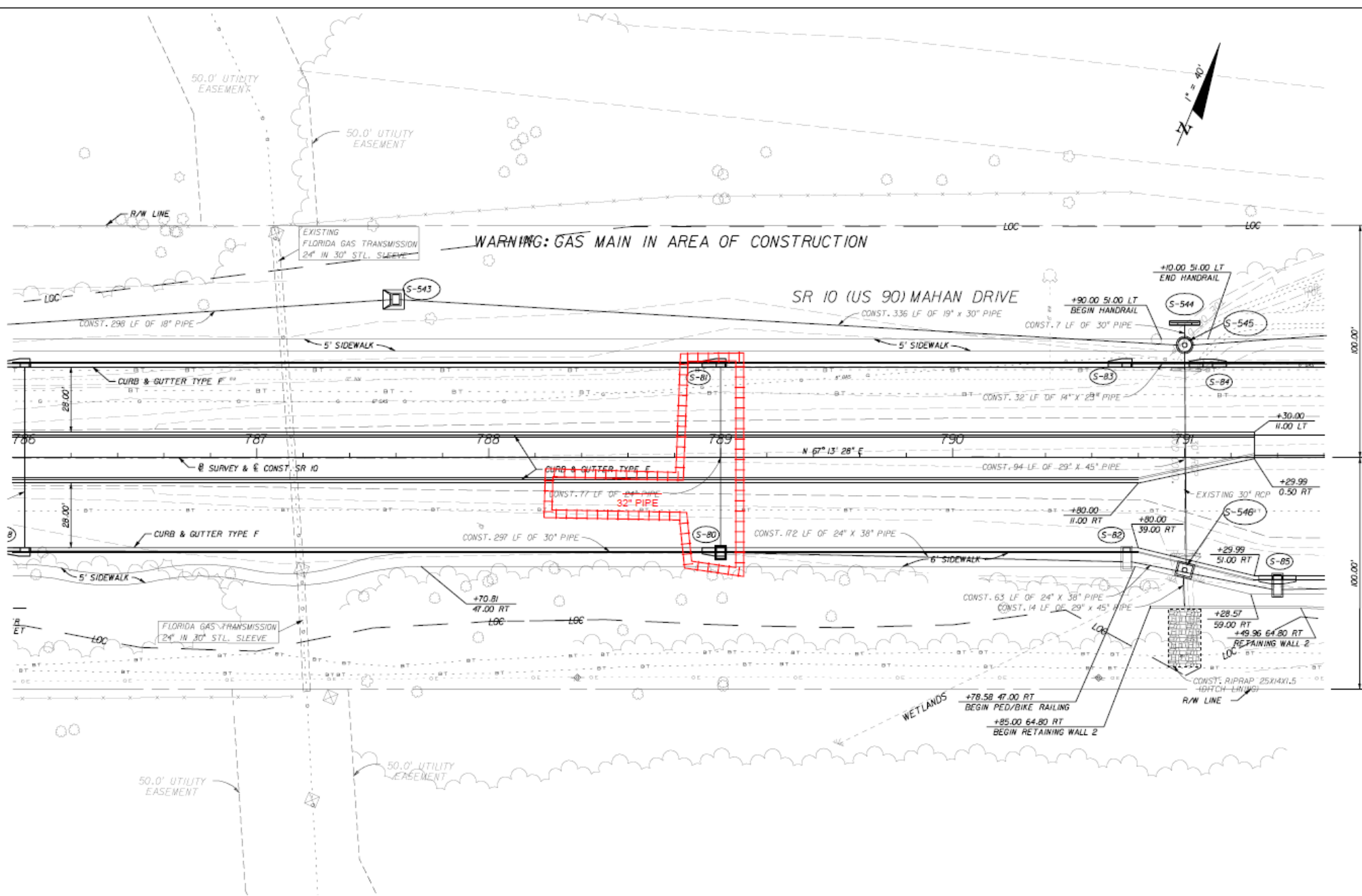
STATE OF FLORIDA DEPARTMENT OF TRANSPORTATION		
ROAD NO.	COUNTY	FINANCIAL PROJECT ID
10	LEON	219843-1-52-01

PLAN

SHEET NO.  
68

NOTICE: THE OFFICIAL RECORD OF THIS SHEET IS THE ELECTRONIC FILE SIGNED AND SEALED UNDER RULE 68B5-23.003, F.A.C.

# SPOT THE ERRORS



1

2

NOTICE: THE OFFICIAL RECORD OF THIS SHEET IS THE ELECTRONIC FILE SIGNED AND SEALED UNDER RULE 68B5-23.003, F.A.C.

REVISIONS					
DATE	BY	DESCRIPTION	DATE	BY	DESCRIPTION

THE LPA GROUP INCORPORATED  
 Ryan Patterson, P.E. #62964  
 1320 Executive Center Dr. Suite 100  
 Tallahassee, FL 32301  
 Ph. (850) 205-0460 C.A. #4307

STATE OF FLORIDA DEPARTMENT OF TRANSPORTATION		
ROAD NO.	COUNTY	FINANCIAL PROJECT ID
10	LEON	219843-1-52-01

PLAN

SHEET NO.  
68

# SPOT THE ERRORS

- 1
- 2
- 3
- 4
- 5

## COMPONENTS OF CONTRACT PLANS SET

- ROADWAY PLANS
- SIGNING AND PAVEMENT MARKING PLANS
- SIGNALIZATION PLANS

A DETAILED INDEX APPEARS ON THE KEY SHEET OF EACH COMPONENT

### INDEX OF ROADWAY PLANS

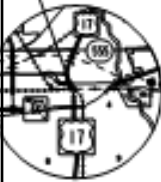
SHEET NO.	SHEET DESCRIPTION
1	KEY SHEET
2-3	SIGNATURE SHEET
4	SUMMARY OF PAY ITEMS
5	TYPICAL SECTION
6	TYPICAL SECTION DETAILS
50-1 - 50-47	SUMMARY OF QUANTITIES
7 - 8	SUMMARY OF DRAINAGE STRUCTURES
9	OPTIONAL MATERIALS TABULATION
10 - 11	BENCHMARKS
12 - 13	REFERENCE POINTS
14	PROJECT NOTES
15 - 40	ROADWAY PLAN
41 - 42	DRAINAGE STRUCTURES
43 - 44	DRAINAGE DETAILS
45 - 47	DRIVEWAY CROSS SECTIONS
48 - 50	STORMWATER POLLUTION PREVENTION PLAN
51 - 65	TEMPORARY TRAFFIC CONTROL PLAN
66 - 67	SUMMARY OF VERIFIED UTILITIES
68 - 71	POTENTIAL CONTAMINATION SITES

### LIST OF REVISED INDEX DRAWINGS

INDEX NO.	SHEET NO.
600	1-12 OF 12
819	1-2 OF 2
11200	3 OF 3
11060	4 OF 8
17502	1 OF 1
17346	1-2 AND 13-14
17547	1-5 OF 5
17727	2 OF 2
17047	3 OF 1

RAILROAD CROSSING NO. 62492-H

(SR 35/SR 555)  
 CSX TRANSPORTATION, INC.  
 ARMP SV 051.17  
 STA. 666+40.00 @ SURVEY SR 35/ SR 555



### GOVERNING STANDARDS AND SPECIFICATIONS

Florida Department of Transportation, 2015 Design Standards and revised Index Drawings as appended herein, and July 2015 Standard Specifications for Road and Bridge Construction, as amended by Contract Documents.

For Design Standards click on the "Design Standards" link at the following web site:  
<http://www.dot.state.fl.us/rddesign/>

For the Standard Specifications for Road and Bridge Construction click on the "Specifications" link at the following web site:  
<http://www.dot.state.fl.us/specificationsoffice/>

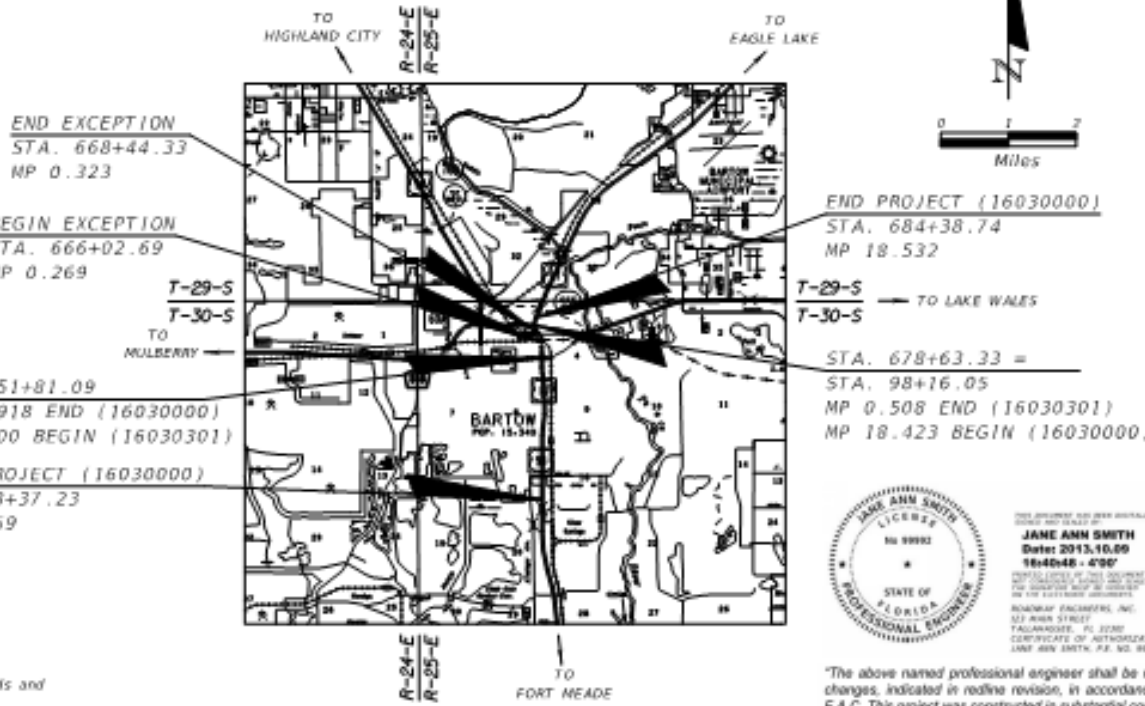
## STATE OF FLORIDA DEPARTMENT OF TRANSPORTATION

### FINAL CONTRACT PLANS ~~CONTRACT PLANS~~

FINANCIAL PROJECT ID 431278-1-52-01  
 (FEDERAL FUNDS)  
 POLK COUNTY (16030 AND 16030-301)  
 STATE ROAD NO. 35/555



PROJECT LOCATION



ROADWAY SHOP DRAWINGS TO BE SUBMITTED TO:  
 ANDRA G. DIGGS II, P.E.  
 FLORIDA DEPARTMENT OF TRANSPORTATION  
 DISTRICT ONE OFFICE  
 801 N. BROADWAY AVENUE  
 BARTON, FL 33830-3809

PLANS PREPARED BY:  
 FLORIDA DEPARTMENT OF TRANSPORTATION  
 DISTRICT ONE OFFICE  
 801 N. BROADWAY AVENUE  
 BARTON, FL 33830-3809  
 (863) 519-2300

NOTE: THE SCALE OF THESE PLANS MAY HAVE CHANGED DUE TO REPRODUCTION.



THIS DRAWING WAS PREPARED BY  
 JANE ANN SMITH  
 Date: 2013.10.09  
 16x40x48 - 4'00"  
 THE FOLLOWING PLAN OR DRAWING IS THE CONTRACT COPY TO BE USED BY THE CONTRACTOR.  
 ROADWAY ENGINEERS, INC.  
 121 ANNA STREET  
 TALLAHASSEE, FL 32301  
 CERTIFICATE OF AUTHORIZATION: 12345  
 LICENSE NO. 98982

"The above named professional engineer shall be responsible for the following changes, indicated in redline revision, in accordance with Rule 61G15-23.004, F.A.C. This project was constructed in substantial compliance with these plans as provided by the Engineer of Record."

LENGTH OF PROJECT		
	LINEAR FEET	MILES
ROADWAY	13,433.36	2.544
BRIDGES	0.000	0.000
NET LENGTH OF PROJECT	13,433.36	2.544
EXCEPTIONS	168.15	0.032
GROSS LENGTH OF PROJECT	13,601.51	2.576

FDOT PROJECT MANAGER: N. WAYNE SHELTON

KEY SHEET REVISIONS	
DATE	DESCRIPTION

ROADWAY PLANS  
 ENGINEER OF RECORD: MELISSA M. GRIBBS, P.E.

P.E. NO.: 72156

FISCAL YEAR	SHEET NO.
16	1

NOTICE: THE OFFICIAL RECORD OF THIS SHEET IS THE ELECTRONIC FILE STORED AND SEALED UNDER RULE 61G15-23.003, F.A.C.





# FINAL ESTIMATE PROCESS

## FINAL ACCEPTANCE

- Final Acceptance = End of Construction

## What's Next?

- Last Partial Payment is processed
- Prepare to generate the Final Estimate



# FINAL ESTIMATE PROCESS

**AUTHORITY:**

***STANDARD SPEC 9-8***

## **9-8 Acceptance and Final Payment.**

**9-8.1 Acceptance and Final Payment Documents:** Whenever the Contractor has completely performed the work provided for under the Contract and the Engineer has performed a final inspection and made final acceptance (as provided in 5-10 and 5-11), and subject to the terms of 8-11, the Engineer will prepare a final estimate showing the value of the work as soon as the Engineer makes the necessary measurements and computations. The Engineer will correct all prior estimates and payments in the final estimate and payment. The Department will pay the estimate, less any sums that the Department may have deducted or retained under the provisions of the Contract, as soon as practicable after final acceptance of the work, along with all executed supplemental agreements received after final acceptance.

If the Contractor fails to furnish all required Contract Documents as listed in (1) through (9) below within 90 days of the Department's offer of final payment or request for refund of overpayment, the Department may suspend the Contractor's Certificate of Qualification under the provisions of Florida Administrative Code 14-22.

1. The Contractor has agreed in writing to accept the balance due or refund the overpayment, as determined by the Department, as full settlement of his account under the Contract and of all claims in connection therewith, or the Contractor, has through the use of the Qualified Acceptance Letter, accepted the balance due or refunded the overpayment, as determined by the Department, with the stipulation that his acceptance of such payment or the making of such refund does not constitute any bar, admission, or estoppel, or have any effect as to those payments in dispute with the Contractor and the Department. To receive payment based on a Qualified Acceptance Letter, define in writing the dispute or pending claim with full particular of all items of all issues in dispute, including itemized amounts claimed for all particulars of all items, and submit it as part of the Qualified Acceptance Letter. The Contractor further agrees, by submitting a Qualified Acceptance Letter that any pending or future arbitration claim or suit is limited to those particulars, including the itemized amounts, defined in the original Qualified Acceptance Letter, and that he will commence with any such arbitration claim or suit within 820 calendar days from and after the

# FINAL ESTIMATE PROCESS

## AUTHORITY:

## STANDARD SPEC 9-8

time of final acceptance of the work and that his failure to file a formal claim within this period constitutes his full acceptance of the Engineer's final estimate and payment. The overpayment refund check from the Contractor, if required, will be considered a part of any Acceptance Letter executed.

2. The Contractor has properly maintained the project, as specified hereinbefore.

3. The Contractor has furnished a sworn affidavit to the effect that the Contractor has paid all bills and no suits are pending (other than those exceptions listed, if any) in connection with work performed under the Contract and that the Contractor has not offered or made any gift or gratuity to any person of a special nature with, any employee of the Department in the performance of the Contract. Include with the listed tort liability exceptions, if any, evidence of adequate insurance coverage as required in 7-13.

**FORM 700-050-21  
(a.k.a. Form 21A)**

4. The Contractor has submitted the Contractor's portion of the affidavit and surety release subsequent to the Contractor's completion of his portion, to final payment to the Contractor and agrees that the making of such payment does not relieve the surety of any of its obligations under the bond.

5. The Contractor has complied with and settled all requirements pertaining to any wage-rate provisions.

6. The Contractor has submitted all required mill tests and analysis reports to the Engineer.

7. The Contractor has furnished the Construction Compliance with Specifications and Plans Certification. Provide the Engineer with a notarized final certification of compliance with the requirements of the Contract to the Engineer's final estimate. Certification must be on a form provided by the Engineer.

**FORM 700-020-02**

8. The Contractor has submitted and the Department has accepted all as-built drawings and certified surveys.

9. The Contractor has furnished all required manufacturers' warranties to the Engineer.

# FINAL ESTIMATE PROCESS

## OFFER LETTER TO THE CONTRACTOR

- Must be submitted to the Contractor within **30 days** from Final Acceptance
- Sent to the Contractor (typically from Resident Office) BUT must be returned to the District Final Estimates Office

### The Offer Letter includes:

- Offer Letter – ONLY 1
  - Offer of Final Payment - OR -
  - Request for Refund
- Final Estimate printout
- Acceptance Letter (to be signed by the Contractor). Acceptance Letter gives 2 options:
  - Regular Acceptance - Option of Agreeing with Offer - OR -
  - Qualified Acceptance - Option of Disagreeing with Offer
- Contractor's Affidavit & Surety Release (Form 21-A)
- Other required documents to be returned to the District Final Estimates office

- Offer Letter



## What's Next?

# FINAL ESTIMATE PROCESS

FINAL ESTIMATE  
DOCUMENTATION  
TO THE DISTRICT



# POLL QUESTION

**Do you think there is a deadline for submitting the Final Estimate Documentation to the District?**

- No Deadline
- Submit information as items close throughout the project
- Immediately after Final Acceptance
- 30 Days after Final Acceptance
- Before the Contractor's 820 Days to make Claim are up

# FINAL ESTIMATE PROCESS

## FINAL ESTIMATE DOCUMENTATION TO THE DISTRICT

Resident Office Submittal to the District (WITHIN 30 DAYS of Final Acceptance) with all back up to substantiate the final payment to the Contractor.

The Final Estimates Documentation consists of:

- Offer Letter
- Final As-Built Plans
- Contract Time Documentation
- Material Certification Documents
- Overruns and Underruns
- Required documents outlined on Final Plans and Estimate Transmittal (Form 700-050-20)
  - All quantity backup (Asphalt Lot Packages, Final Measurements, Pile Driving Logs, etc.)
  - Working Drawings, As-Built Load Rating, etc.



# FINAL ESTIMATE PROCESS

## FINAL PLANS AND ESTIMATES TRANSMITTAL FORM 700-050-20

STATE OF FLORIDA DEPARTMENT OF TRANSPORTATION  
CONSTRUCTION

**FINAL PLANS AND ESTIMATES TRANSMITTAL**

To: \_\_\_\_\_ Date: \_\_\_\_\_  
 From: \_\_\_\_\_ E-mail: \_\_\_\_\_  
 Transmittal Prepared by: \_\_\_\_\_ Phone: \_\_\_\_\_  
 Financial Project ID(s): \_\_\_\_\_  
 Fed. Aid Project No.: \_\_\_\_\_ Contract No. \_\_\_\_\_ County: \_\_\_\_\_  
 Contractor: \_\_\_\_\_

Contingency Funds to be Unencumbered: C.P.I. = \$ \_\_\_\_\_ SA/CO # \_\_\_\_\_ = \$ \_\_\_\_\_  
(List each Contingency Fund separately)  
 SA/CO # \_\_\_\_\_ = \$ \_\_\_\_\_ SA/CO # \_\_\_\_\_ = \$ \_\_\_\_\_  
 Overrun Funds to Be Unencumbered = \$ \_\_\_\_\_

---

**For Resident Office Use**

We are this date transmitting the Final Estimates Documentation on the above referenced contract. This submission includes the data indicated below:  
 PLEASE VERIFY THAT THE DOCUMENTS/INFORMATION BELOW HAVE BEEN ENTERED INTO EDMS.

Applicable Job Correspondence	Yes <input type="checkbox"/> No <input type="checkbox"/> Part <input type="checkbox"/> N/A <input type="checkbox"/>	Offer Letter Date entered in SM	Yes <input type="checkbox"/> No <input type="checkbox"/> Part <input type="checkbox"/> N/A <input type="checkbox"/>
Time Correspondence	Yes <input type="checkbox"/> No <input type="checkbox"/> Part <input type="checkbox"/> N/A <input type="checkbox"/>	Receipt of Offer Letter entered in SM	Yes <input type="checkbox"/> No <input type="checkbox"/> Part <input type="checkbox"/> N/A <input type="checkbox"/>
Schedule of Values (D/B & LS)	Yes <input type="checkbox"/> No <input type="checkbox"/> Part <input type="checkbox"/> N/A <input type="checkbox"/>	For Projects using Form 675-030-20 (Asphalt Roadway Daily Report of Quality Control - QCRR), submit the Asphalt Roadway As-Built Pavement Data Form (700-050-12) in Excel Format to <a href="mailto:CO-FinalEstimateSection@dot.state.fl.us">CO-FinalEstimateSection@dot.state.fl.us</a>	Yes <input type="checkbox"/> No <input type="checkbox"/> Part <input type="checkbox"/> N/A <input type="checkbox"/>
Fuel Adjustment Certifications (D/B & LS)	Yes <input type="checkbox"/> No <input type="checkbox"/> Part <input type="checkbox"/> N/A <input type="checkbox"/>	For Projects using Form 675-030-20A (QCRR - Automated Version), submit QCRR in Excel Format in EDMS AND to State Material's Office (SMO) <a href="mailto:SM-MACQCRRUpload@dot.state.fl.us">SM-MACQCRRUpload@dot.state.fl.us</a>	Yes <input type="checkbox"/> No <input type="checkbox"/> Part <input type="checkbox"/> N/A <input type="checkbox"/>
Load Rating Calculations (Structures)	Yes <input type="checkbox"/> No <input type="checkbox"/> Part <input type="checkbox"/> N/A <input type="checkbox"/>	EDMS DOC # _____	
Asphalt LOT Submittal Packages	Yes <input type="checkbox"/> No <input type="checkbox"/> Part <input type="checkbox"/> N/A <input type="checkbox"/>	(Final) Construction Compliance w/ Plans & Specs Form 700-020-02	_____
Bituminous Certifications Form 700-050-66	Yes <input type="checkbox"/> No <input type="checkbox"/> Part <input type="checkbox"/> N/A <input type="checkbox"/>	Offer Letter	_____
MOT Certifications Form 700-050-62/67/68	Yes <input type="checkbox"/> No <input type="checkbox"/> Part <input type="checkbox"/> N/A <input type="checkbox"/>	Final CPPR Document	_____
Buy America Certifications	Yes <input type="checkbox"/> No <input type="checkbox"/> Part <input type="checkbox"/> N/A <input type="checkbox"/>	Pay Item Summary & Certification Sheet	Form 700-050-10 _____
SAs & Work Orders	Yes <input type="checkbox"/> No <input type="checkbox"/> Part <input type="checkbox"/> N/A <input type="checkbox"/>	Certification as to Accuracy of Final Payment	Form 700-050-38 _____
ITSFM Feature Templates and As-Built to Traffic Ops (correspondence in EDMS)	Yes <input type="checkbox"/> No <input type="checkbox"/> Part <input type="checkbox"/> N/A <input type="checkbox"/>	Final Estimates Office Record of Final Plans and Documents Form 700-050-28 Initiated in FES	Yes <input type="checkbox"/> No <input type="checkbox"/> Part <input type="checkbox"/> N/A <input type="checkbox"/>
APL Data entered in PTS	Yes <input type="checkbox"/> No <input type="checkbox"/> Part <input type="checkbox"/> N/A <input type="checkbox"/>	Final Inspection & Acceptance of Fed Aid Project Form 700-010-32 Initiated	Yes <input type="checkbox"/> No <input type="checkbox"/> Part <input type="checkbox"/> N/A <input type="checkbox"/>
Shop Drawings	Yes <input type="checkbox"/> No <input type="checkbox"/> Part <input type="checkbox"/> N/A <input type="checkbox"/>	Warranty Date(s) entered in SM and CIM	Yes <input type="checkbox"/> No <input type="checkbox"/> Part <input type="checkbox"/> N/A <input type="checkbox"/>
As-Built Drawings (Contractor)	Yes <input type="checkbox"/> No <input type="checkbox"/> Part <input type="checkbox"/> N/A <input type="checkbox"/>	Final Acceptance entered in SM (if signed by District)	Yes <input type="checkbox"/> No <input type="checkbox"/> Part <input type="checkbox"/> N/A <input type="checkbox"/>
Final As-Built Plans (Submitted to DFEO)	Yes <input type="checkbox"/> No <input type="checkbox"/> Part <input type="checkbox"/> N/A <input type="checkbox"/>	CPPR Grade Finalized in CIM	Yes <input type="checkbox"/> No <input type="checkbox"/> Part <input type="checkbox"/> N/A <input type="checkbox"/>
LFA/UWHCA Closeout Letter	Yes <input type="checkbox"/> No <input type="checkbox"/> Part <input type="checkbox"/> N/A <input type="checkbox"/>	Any Pending Supplemental Agreements?	Yes <input type="checkbox"/> No <input type="checkbox"/> Part <input type="checkbox"/> N/A <input type="checkbox"/>
Final Estimates Office Record of Final Plans and Documents Form 700-050-28 Initiated in FES	Yes <input type="checkbox"/> No <input type="checkbox"/> Part <input type="checkbox"/> N/A <input type="checkbox"/>	Any Pending/Possible Time Extensions, Claims or Arbitrations?	Yes <input type="checkbox"/> No <input type="checkbox"/> Part <input type="checkbox"/> N/A <input type="checkbox"/>
Final Inspection & Acceptance of Fed Aid Project Form 700-010-32 Initiated	Yes <input type="checkbox"/> No <input type="checkbox"/> Part <input type="checkbox"/> N/A <input type="checkbox"/>	<b>Back Up Documentation</b>	
Warranty Date(s) entered in SM and CIM	Yes <input type="checkbox"/> No <input type="checkbox"/> Part <input type="checkbox"/> N/A <input type="checkbox"/>	Pipe Inspection & Video Report	Yes <input type="checkbox"/> No <input type="checkbox"/> Part <input type="checkbox"/> N/A <input type="checkbox"/>
Final Acceptance entered in SM (if signed by District)	Yes <input type="checkbox"/> No <input type="checkbox"/> Part <input type="checkbox"/> N/A <input type="checkbox"/>	Pile Records	Yes <input type="checkbox"/> No <input type="checkbox"/> Part <input type="checkbox"/> N/A <input type="checkbox"/>
CPPR Grade Finalized in CIM	Yes <input type="checkbox"/> No <input type="checkbox"/> Part <input type="checkbox"/> N/A <input type="checkbox"/>	Straightedge Reports (Data Entry Forms)	Yes <input type="checkbox"/> No <input type="checkbox"/> Part <input type="checkbox"/> N/A <input type="checkbox"/>
Any Pending Supplemental Agreements?	Yes <input type="checkbox"/> No <input type="checkbox"/> Part <input type="checkbox"/> N/A <input type="checkbox"/>	Composite Pay Factor Summary	_____
Any Pending/Possible Time Extensions, Claims or Arbitrations?	Yes <input type="checkbox"/> No <input type="checkbox"/> Part <input type="checkbox"/> N/A <input type="checkbox"/>	Bituminous Adjustment Summary	_____
<b>For District Final Estimates Office Use</b>			
Collaboration Site Closed	Yes <input type="checkbox"/> No <input type="checkbox"/> Part <input type="checkbox"/> N/A <input type="checkbox"/>	Fuel Adjustment Summary	_____
Final Estimates Office Record of Final Plans and Documents Form 700-050-28 Completed	Yes <input type="checkbox"/> No <input type="checkbox"/> Part <input type="checkbox"/> N/A <input type="checkbox"/>	MOT Certification Summary	_____
Final As-Built Plans (Submitted to EDMS)	Yes <input type="checkbox"/> No <input type="checkbox"/> Part <input type="checkbox"/> N/A <input type="checkbox"/>	Other _____	_____
Are Overrun Funds Unencumbered?	Yes <input type="checkbox"/> No <input type="checkbox"/> Part <input type="checkbox"/> N/A <input type="checkbox"/>	Other _____	_____
Are Contingency Funds Unencumbered?	Yes <input type="checkbox"/> No <input type="checkbox"/> Part <input type="checkbox"/> N/A <input type="checkbox"/>	Other _____	_____
Court Orders	Yes <input type="checkbox"/> No <input type="checkbox"/> Part <input type="checkbox"/> N/A <input type="checkbox"/>	Other _____	_____
Arbitration Rulings	Yes <input type="checkbox"/> No <input type="checkbox"/> Part <input type="checkbox"/> N/A <input type="checkbox"/>	Other _____	_____
Final Project Materials Certification Letter (PMCL) in MAC	Yes <input type="checkbox"/> No <input type="checkbox"/> Part <input type="checkbox"/> N/A <input type="checkbox"/>	Other _____	_____

# FINAL ESTIMATE PROCESS

## REVIEW OF THE FINAL ESTIMATE DOCUMENTATION

- All Information has been submitted to the District Final Estimate Office

## What's Next?

- District will conduct a Post Audit Review (PAR) per RAM 3.7.3

Minimum requirements for PAR frequencies					
	\$100M or >	\$50M to \$100M	\$25M to \$50M	\$2M to \$25M	<\$2M
PAR	100%	50%	40%	35%	15%

- If \$\$ mistakes are discovered, the District will submit a **Notifications of Additional Findings** to the Contractor.

# POLL QUESTION

**What do you think the goals of a Post Audit Review are?**

- Zero Dollar Change to Final Estimate
- Zero Procedural Errors
- Improving the Final Estimates Process
- Maintaining positive outcomes

# FINAL ESTIMATE PROCESS

## POST AUDIT REVIEW



FLORIDA DEPARTMENT OF TRANSPORTATION

RON DeSANTIS  
GOVERNOR

1074 Highway 90 East  
Chipley, FL 32428 - 0607

KEVIN J. THIBAUT, P.E.  
SECRETARY

### POST AUDIT REVIEW FOR A CERTIFIED FINAL ESTIMATES

Per the Review & Administration Manual, Topic 700-050-005; Chapter 3: If errors or omissions are listed, the Consultant / In-house will submit a formal report within FOURTEEN(14) calendar days defining what steps will be taken to eliminate these types of issues from recurring on future projects.

This report will be sent to:

Kristin Tadlock, State Final Estimates Engineer: Kristin.Tadlock@dot.state.fl.us

Ed Hudec, District Construction Engineer: Ed.Hudec@dot.state.fl.us

Robby Stone, District Final Estimate Manager: Robby.Stone@dot.state.fl.us

<b>Lead Financial Project Id</b> 218699-2-52-01	<b>Contract Id</b> E3R38	<b>Contract Type</b> CC
<b>Road No./Description</b> SR 30/BRIDGE REPAIR-REHABILITATION,49010000,		<b>Fuel Spec Year</b> 2013
<b>Contractor Name</b> <input type="checkbox"/> Joint Venture PNEUMATIC CONCRETE CO., INC.		
<b>Resident Office</b> Midway Operations Center	CCEI	
<b>FDOT Resident Engineer</b> Corbin, Gabriella	CCEI Sr. Project Engineer	
<b>FDOT Project Administrator</b> Munyon, Patrick	CCEI Project Administrator	
<b>FDOT Project Manager</b> Kerwin, Jeff		
<b>F.E. Level II</b> Stoutamire, William	<b>Review Date</b> 3/6/2019	
<b>Reviewer</b> Bradford, David	<b>Day(s) in Review</b> 1	
<b>Final Acceptance Date</b> 2/19/2019	<b>Offer of Final Payment Date</b> 3/4/2019	
<b>Date Project Received at DFEO</b> 3/6/2019	<b>Days to Submit Offer Letter</b> 13	
<b>Certified Amount</b> \$462,354.19	<b>Final Amount</b> \$462,354.19	
	OVER PAYMENT	\$0.00
	UNDER PAYMENT	\$0.00
	ABSOLUTE VALUE	\$0.00
	NET VALUE OF ALL CHANGES	\$0.00
<b>Review Notes/Findings</b>		
<b>Adjustment Type</b>	<b>Amount</b>	<b>Remarks</b>
Other - Final Estimate Documentation	\$0.00	This Project Estimate was well prepared and submitted in a timely manner.

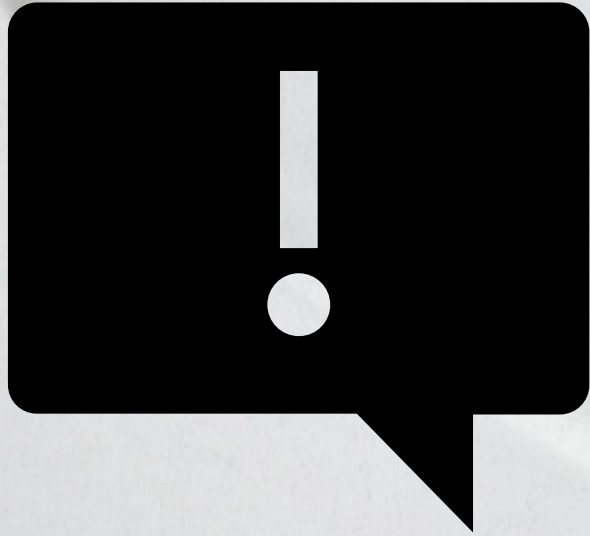
# FINAL ESTIMATE PROCESS

## CONTRACT CLOSEOUT

# What's Next?

- Submit the PAR report to the Resident Office.
  - 14 days to respond if errors are found on how these mistakes will be prevented in the future.
- **Pass to the Comptroller for final payment IF all claims have been settled.**
  - If not, maximum of 820 days

# AND REMEMBER....



**The most important thing to remember if you have questions on final estimates is...**

- Read your contract
- ReAd yOuR CoNtRacT
- Pretty please read your contract
- **READ YOUR CONTRACT!**

**QUESTIONS?**

---