

BROWSER SETTINGS

I. Getting Started

A. Personalize Your Internet Home Page –

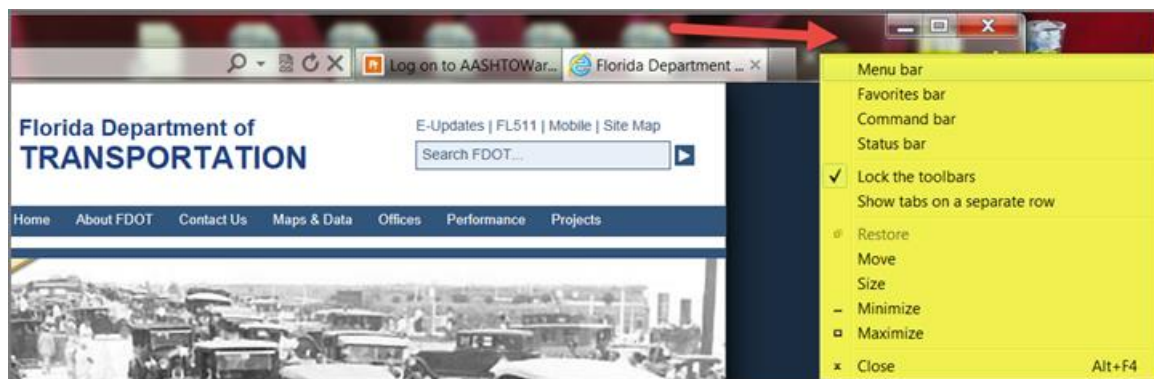
First things first. Before we actually get into the new AASHTOWare Project application, commonly known as “Preconstruction,” let’s take a moment to go over a couple of Internet features to insure we’re all on the same page.

Not all web HomePages appear the same. In this training, everyone will need to have a Menu bar at the very top of their HomePage. Follow the steps outlined to insure everyone has the same page.

1. Open your Internet page.



2. Place the cursor at the very top of the page (red arrow) and right click the cursor.



3. A “Page Option” window will open and offer several possible display changes for the web page. Click on **MENU BAR**. Now your Internet pages will display the Menu Bar across each of your Internet pages. This will make it easier for you to quickly check your settings in the future.
4. With the Menu Bar now on the top of your internet pages, we are ready to start with Browser Settings.

B. Setting the Browser Mode for IE10

The browser mode should be set to IE10 at all times. When you initially log on to the Trns•port software, the browser mode must be set to IE10 Compatibility View.

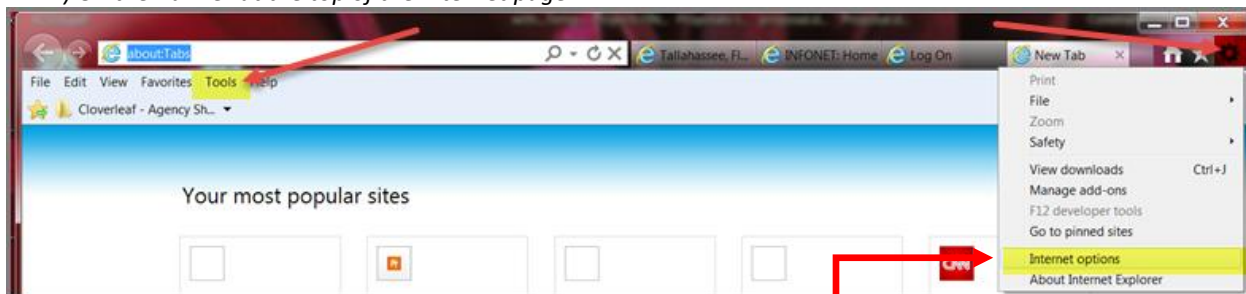
Follow these steps to verify the correct setting:

1. Open the Internet Explorer browser and click **"Tools."**



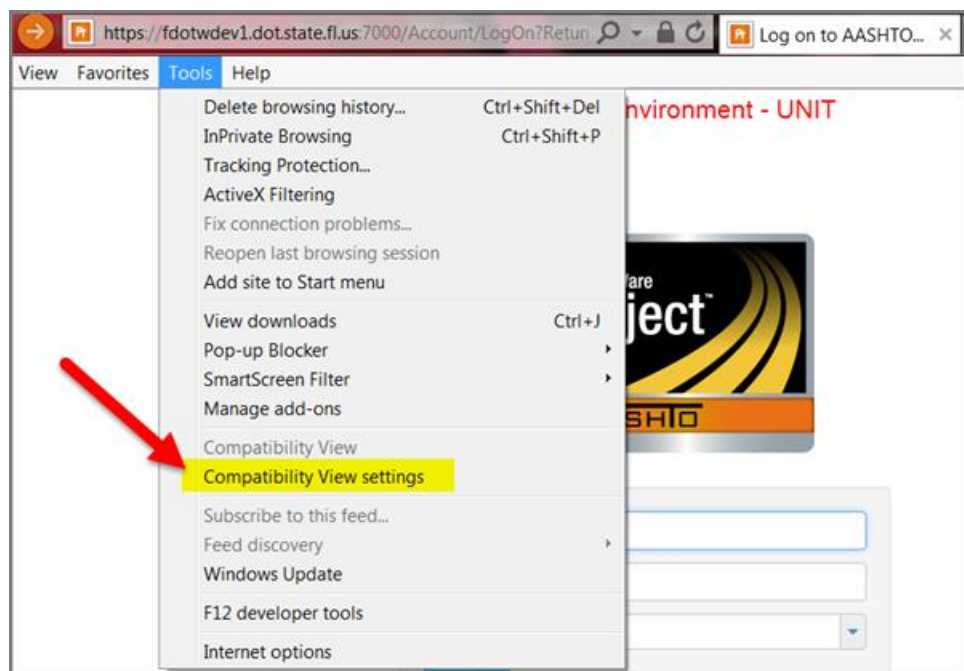
(Special Note: There are two locations for "TOOLS:")

1) On the Banner at the top of the Internet page:



2) And on right side of "Preconstruction" window:

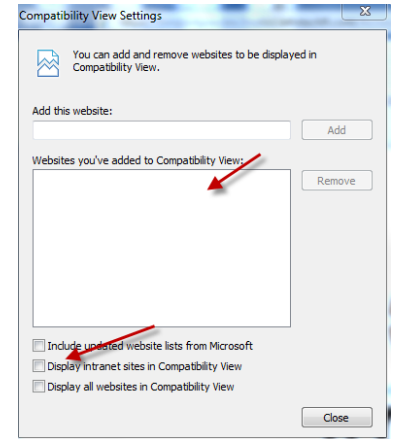
2. From the **"Tools"** menu, select **"Compatibility View Settings."** The browser opens the **Compatibility View Settings** dialog window.



3. In the “**Compatibility View Settings**” window, verify the field is blank and none of the boxes are checked. (See arrows in figure above.)

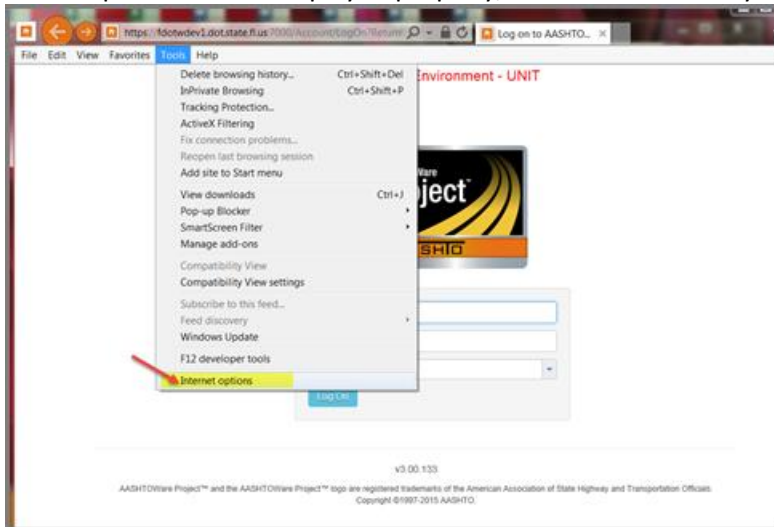
4. Click **Close**.

That’s all there is to it. Now your browser settings are ready to correctly display “Preconstruction” pages. Whenever you have problems with viewing something in “Preconstruction” that you know you should be able to see, check your “**BROWSER SETTINGS**.” More often than not, there is something out of whack here, especially if a major software update has been implemented recently.



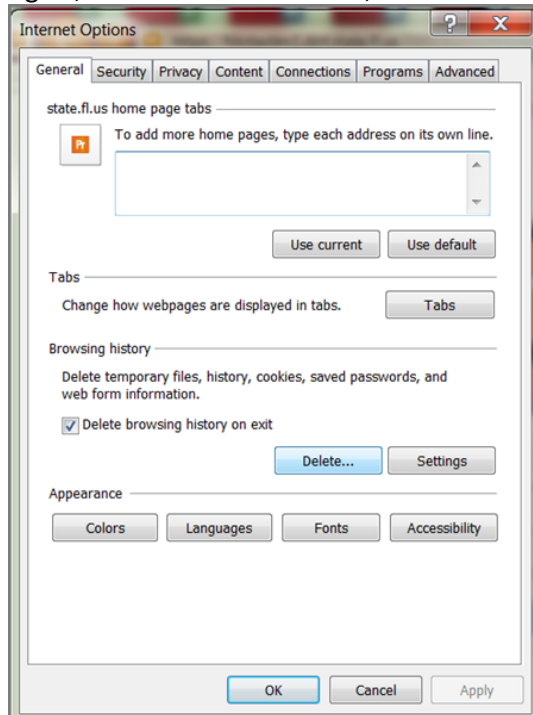
C. Setting Internet Options - Enabling DOM Storage

For components to be displayed properly, the browser security needs to be set to enable **DOM** storage.

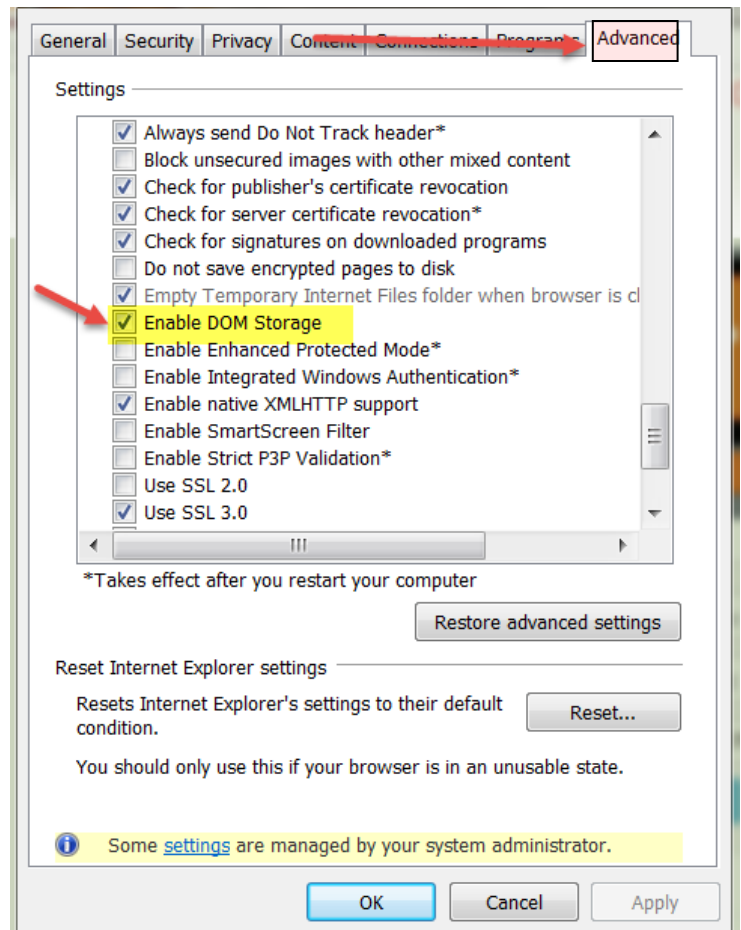


Follow these steps to verify this setting:

1. Again, from the “Tools” menu, select “Internet Options.” The browser opens an Internet Options dialog window.



2. In the Internet Options window, select the “Advanced” tab.
3. In the “SETTING” box at the top of the tab, scroll down to the “Security” section and find the “Enable DOM Storage” to select. Make sure the box in front of this option is checked.



4. To save this change, click “OK.”

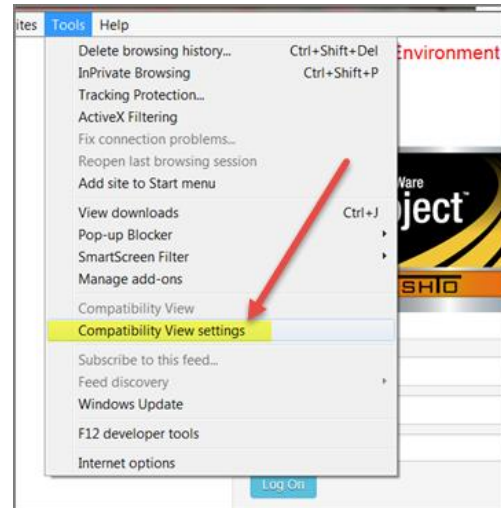
Note: It is recommended that these settings be rechecked if the following situations occur:

- A.) Difficulty accessing Trans*port through the “**Log on**” process.
- B.) Screens within the Application not refreshing accurately.
- C.) Receive an error message “error generating component.”

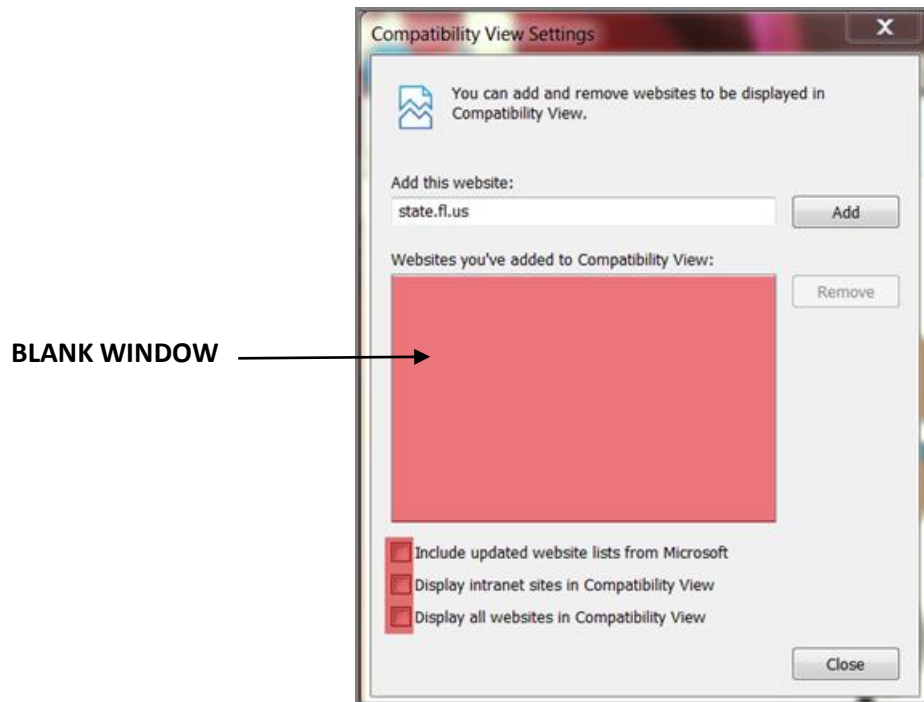
Periodically, check your browser mode easily by following these steps.

1. Check the Browser Settings BY OPENING “Compatibility

Setting.”:



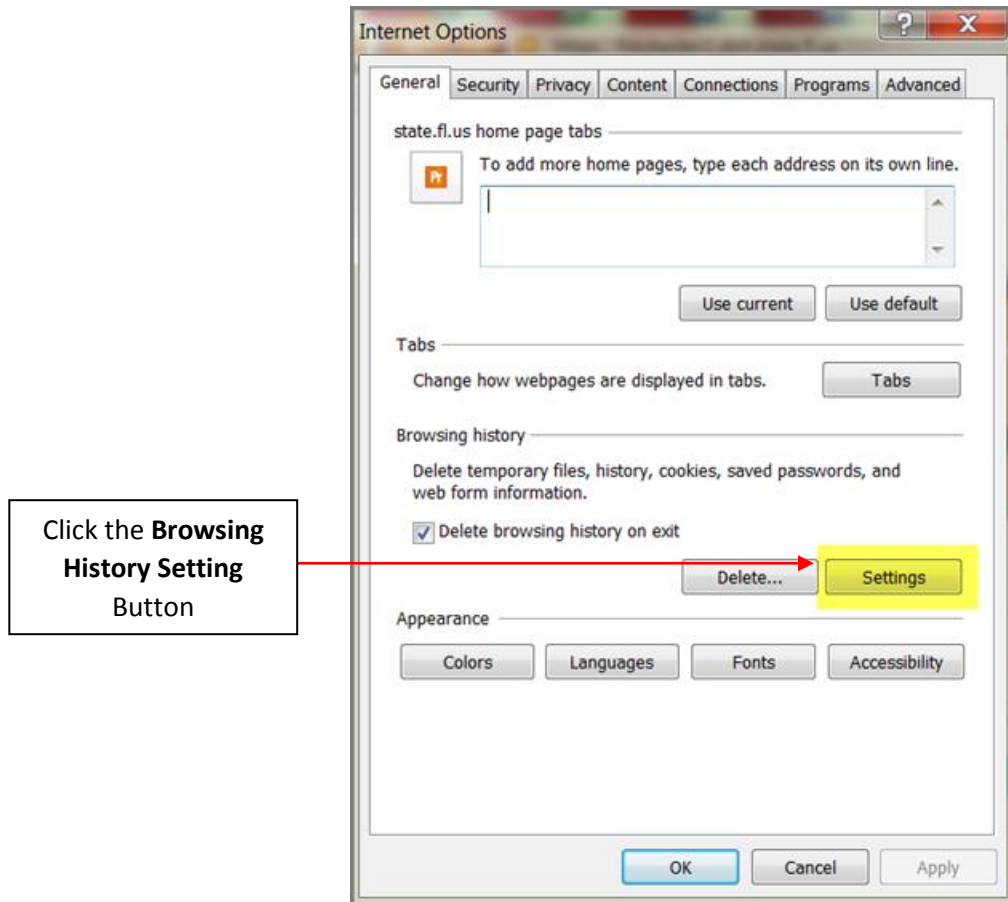
2. With the Compatibility View Setting window open, insure all red white highlighted areas are blank.

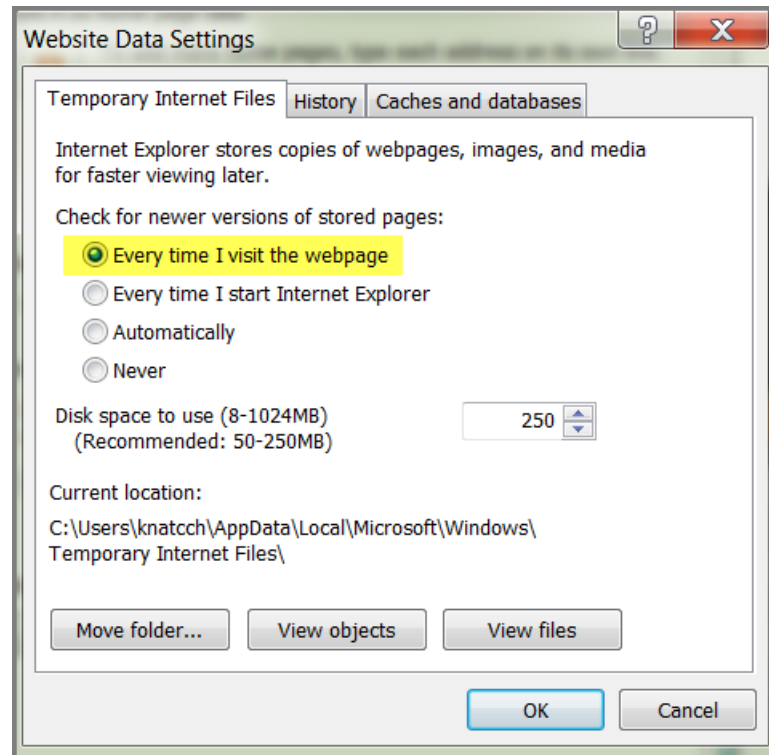


3. Do this periodically to insure your browser is set correctly.

D. Change the Default Setting -BROWSING HISTORY SETTING

There is one other setting you should check from time to time to insure it is set as indicated below. Under the Browser History section of the “Internet Options” page, find the “Setting” button. When you click on the button pictured below the “Temporary Internet Files and History Settings” page will open:





Notice the first radio button “Every time I visit the webpage” is filled. **Make sure this button is filled.** If it isn’t, click the button at the beginning of the sentence. This is the correct setting for the Web-Preconstruction application of TRNS*PORT. With this option selected, the various pages will open quicker since the system will not have to do elaborate searches to find the pages. This step can potentially save the system, and therefore you, time.

From this point forward, everything is exactly the same as outlined under IE9 instructions above.

E. LOGIN

Once the Browser settings have been checked and adjusted, if necessary, the application is ready for you to Login. The same network credentials used to log into FDOT, your FDOT userid and password, are used to work in “Preconstruction.”

1. Enter your regular FDOT USERID
2. Normal Network password
3. Be sure the correct DOMAIN is selected from the dropdown options. (In some cases, the domain is preset to default to the correct domain.)

