



Florida Department of Transportation

CHARLIE CRIST
GOVERNOR

Office of Construction
605 Suwannee Street MS-31
Tallahassee, FL 32399-0450 Tel. 850-414-4150 Fax 850-412-8021

STEPHANIE KOPELOUSOS
SECRETARY

April 30, 2009

This Memo Has Expired

DCE MEMORANDUM NO: 10-09
(FHWA Approved: 4-30-09)

**TO: DISTRICT CONSTRUCTION ENGINEERS
DISTRICT STRUCTURES DESIGN ENGINEERS**

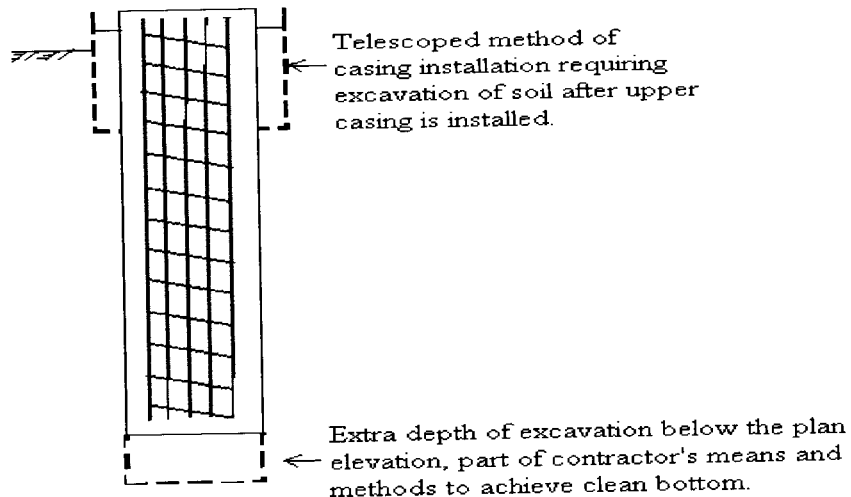
FROM: David A. Sadler, P.E., Director, Office of Construction
Robert Robertson, P.E., State Structures Design Engineer

COPIES: District Materials Engineers, District Geotechnical Engineers, District Traffic Operations Engineers, Jeffrey Ger (FHWA), Paul Steinman, Larry Jones, Sastry Putcha

SUBJECT: CLARIFICATION OF SPECIFICATION 455-16.2 and 455-20 (d)

This memo is issued to clarify Specification 455-20(d) regarding the required concrete cover during the installation of drilled shafts to support mast arms, cantilever signs, overhead truss signs, high mast light poles or other miscellaneous structures, and provide an exception to Specification 455-16.2 Splicing Cage for these shafts as described in the situations shown in the figure below.

Drilled shaft with oversized hole at the top and/or extra depth at the bottom, resulting from contractor's means and methods.



DCE MEMORANDUM 10-09

April 30, 2009

Page 2

1. Specification 455-15.8.3 requires providing a temporary surface casing during the installation of drilled shafts for miscellaneous structures. During this process, the contractor may elect to provide a casing, larger in diameter than shown in the plans. However, this method of excavation results in an oversized diameter of the shaft for the length of the casing. The O.D. of the installed casing shall not be greater than 24 inches larger than the diameter of the cage. Soil removed due to the oversized excavation, must be filled with the drilled shaft concrete at no additional expense to the department. Meet the reinforcement cover requirements per Specification 455-20(d).

The contractor must take all the necessary precautions during the placement of the reinforcement cage through the oversized hole to meet the construction tolerances per Specification 455-20 and 455-21. The Drilled Shaft Installation Plan 455-15.1.2 (7) should indicate the details of shaft reinforcement, including methods to ensure centering/required cover, cage integrity during placement, placement procedures, and cage support.

2. If the excavation is over excavated below the required tip elevation, to facilitate meeting the shaft cleanliness requirements of Specification 455-15.11.4.1 or another reason related to the contractor's means and methods, reinforcement bars need not be spliced in accordance with Specification 455-16.2 if the contractor can maintain the top elevation of the cage as given in the plans.

However, if maintaining the correct top elevation of the reinforcement is not possible, or differing site conditions require the need for additional structural length as determined by the District Geo-technical Engineer, the contractor must splice the reinforcement bars per Specifications 455-16.2 and provide concrete spacers per specification 455-16.3.

All details regarding any means or methods which would result in either of the above scenarios should be described by the contractor in the Drilled Shaft Installation Plan per Specification 455-15.1.2.

If you have further questions, please call Sastry Putchu at 850-414-4148.

SR/pw