

FDOT Construction Software Release Notes and Installation Guide

This document is provided as a guide to install software updates. Therefore, it is strongly recommended that you read through this entire document prior to installing the updates.

Release Notes

The **FDOT Construction Software** includes the following programs:

1. FDOT Quantities Programs (Version 2008-2009)
2. Multi-Line Earthwork (Version 7.2.0)

This is the full installation of the FDOT Construction Software. No changes were made to the Multi-Line Earthwork program. Changes to the FDOT Quantities Programs (previously known as Engineering Menu) are as follows:

1. Daily Report For Trucking Borrow Material program – Fixed a printing error in the report generated by the program.
2. Coreout Averages program – Added notation of “Shy” for cores failing to meet minimum specification thickness to match the PCR Post program.
3. Coreout Averages program – Corrected an issue where the first line of core data is skipped when printing by changing the behavior of the pull-down functions for Comments, New Page and Subtotal. The comments option now inserts a new line and disables all row fields except the last column. The New Page and Subtotal options disables all row fields.

Manuals for these programs are available in PDF format from the Engineering/CADD Systems Office website at the following url's:

FDOT Quantities Programs

<http://www.dot.state.fl.us/ecso/downloads/documentation/QuantitiesPrograms/QuantitiesPrograms.shtm>

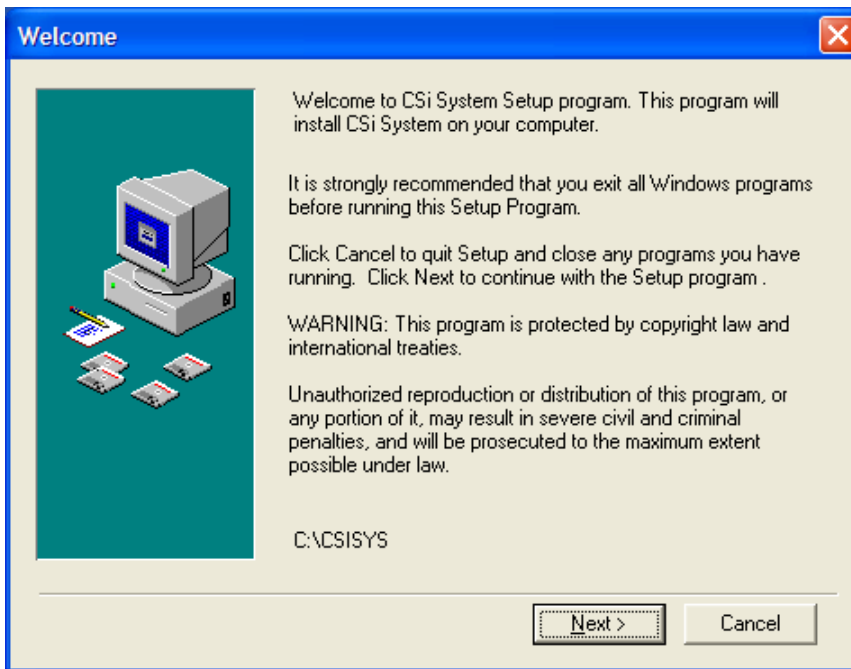
Multi-Line Earthwork

<http://www.dot.state.fl.us/ecso/downloads/documentation/MultiLineEarthwork/MultiLineEarthwork.shtm>

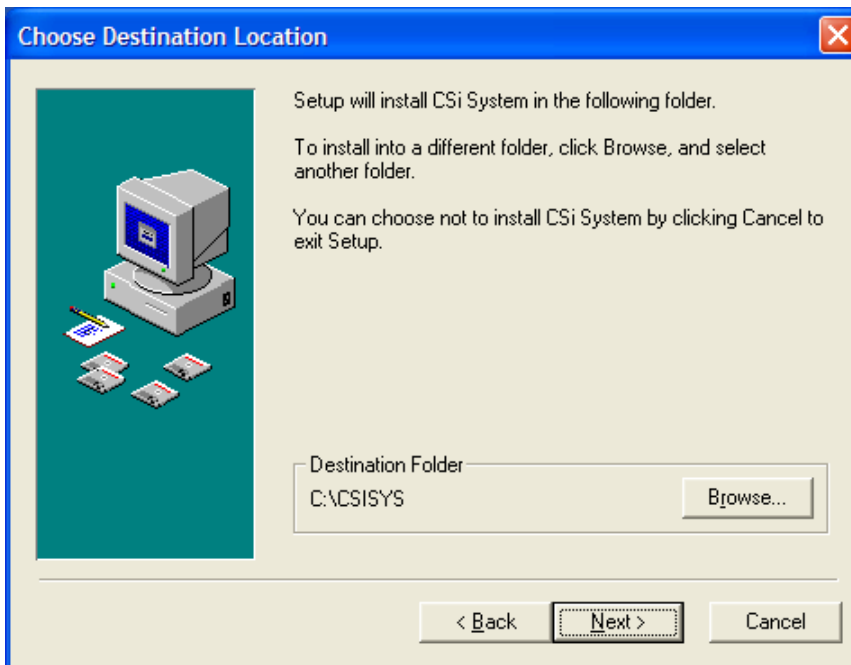
FDOT Construction Software Installation Guide

1. To install, unzip the software installation to the local hard drive. All contents of the zip file will be located in a folder named CSISYS. Navigate to the CSISYS directory and double-click **FDOTSetup.EXE**. It is not necessary to uninstall previous versions of the software for this installation.

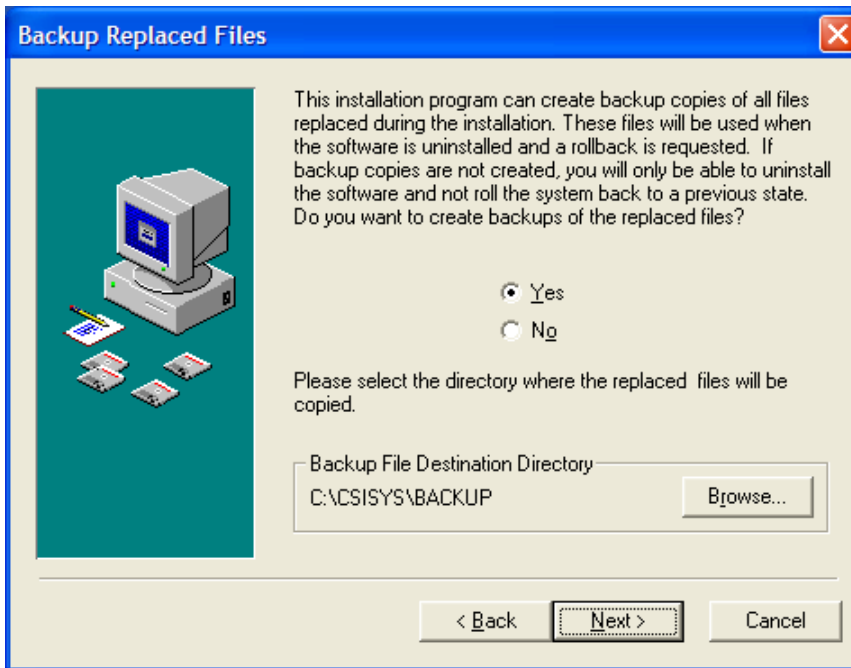
2. Welcome displays. Click **Next** to continue.



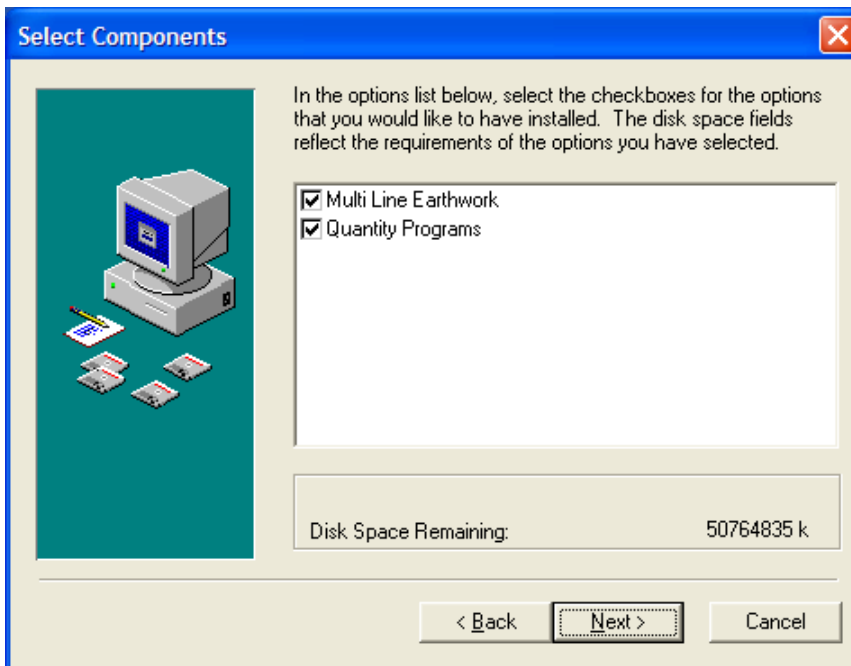
3. Choose Destination Location displays. Set this to the programs' current hard drive location, generally the default (C:\CSISYS), and click **Next** to continue.



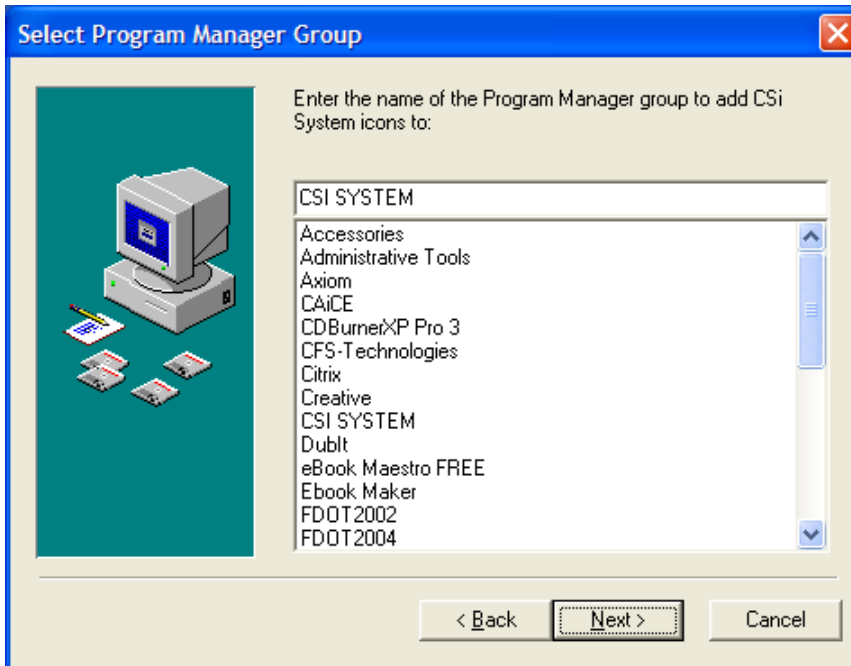
4. Backup Replaced Files displays. Accept the default (**Yes**) and click **Next** to continue.



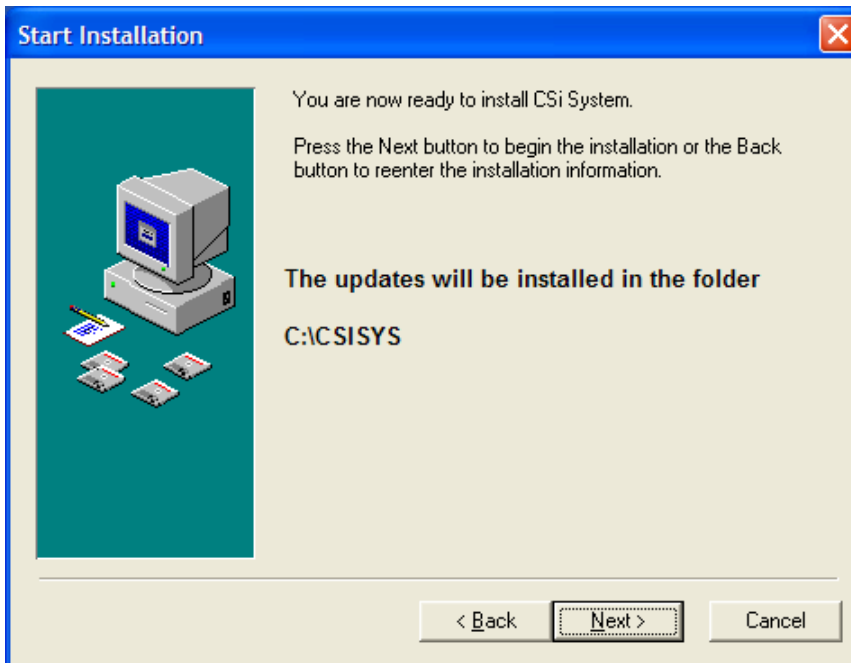
5. Select Components displays. Select the program(s) to install and click **Next** to continue. By default, both programs are selected for installation. For new installations, leave both checkboxes populated. To update a previous installation, only the Quantity Programs checkbox should be populated.



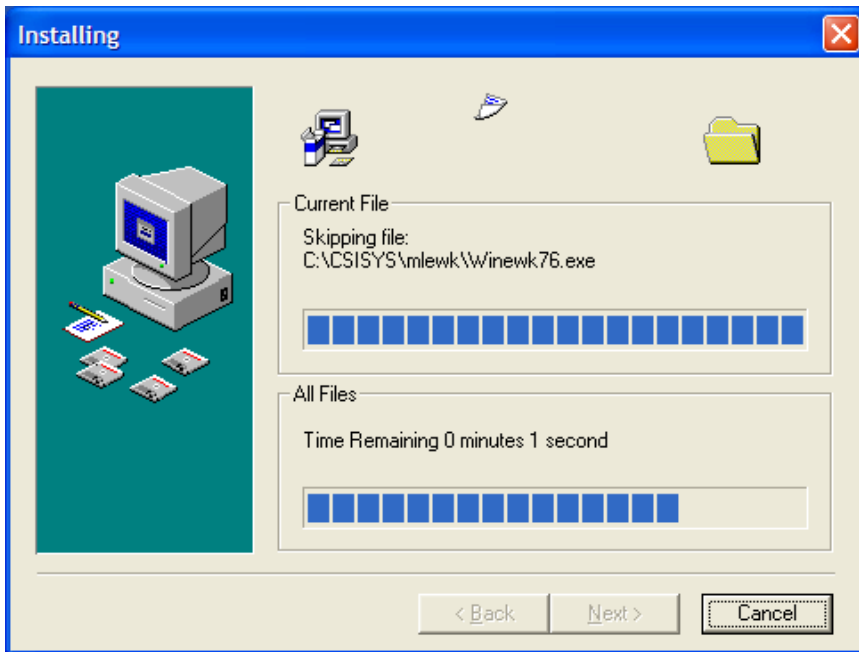
6. Select Program Manager Group displays. Accept the default (**CSI SYSTEM**) and click **Next** to continue.



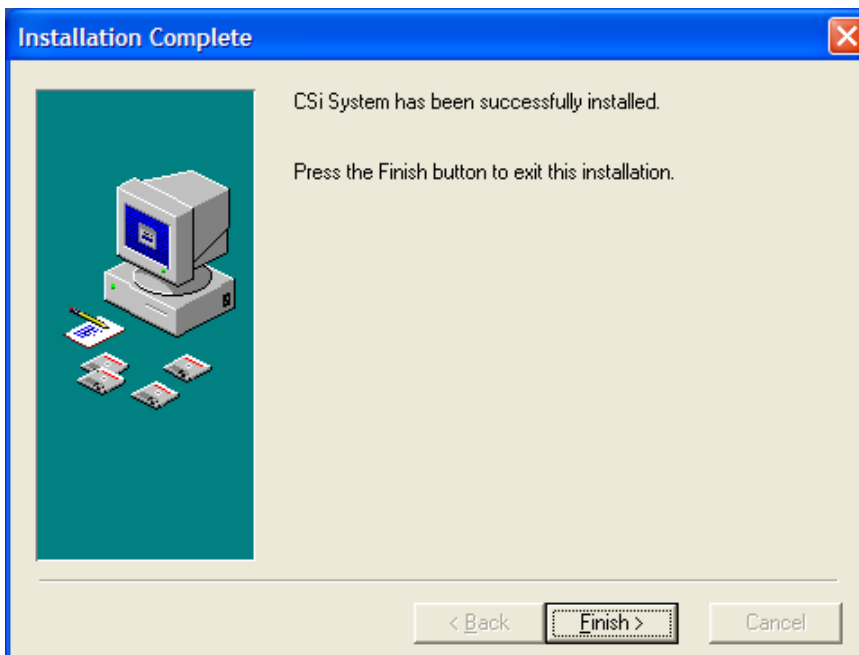
7. Start Installation displays. Click **Next** to continue.



8. Installing appears while the program(s) are installing.



9. Installation Complete appears when the program(s) finish installing. Click **Finish** to complete the installation.



IMPORTANT:

In order for the FDOT Construction Software to run correctly, modify rights must be given to the programs' directory (Destination Folder); generally C:\CSISYS. Otherwise, a Warning dialog reading "Error 0203 error in saving message" appears.

Also included in the download are e-manuals for the FDOT Construction Software. These are comparable to the PDF versions listed on page 1 of this document. Though these manuals are convenient for use online, it is strongly recommended that the PDF versions be used for printing.

After installation, the e-manuals are located in the folder named “E-Manuals” in the programs’ directory, generally C:\CSISYS. Double-clicking **startCD.exe** in the “E-Manuals” folder launches the e-manuals. Then simply click on the e-manual cover you want to open. Instructions on how to navigate the e-manuals can be found in the on-line help.



It is recommended that a shortcut be added to the desktop for easy access of the e-manuals.