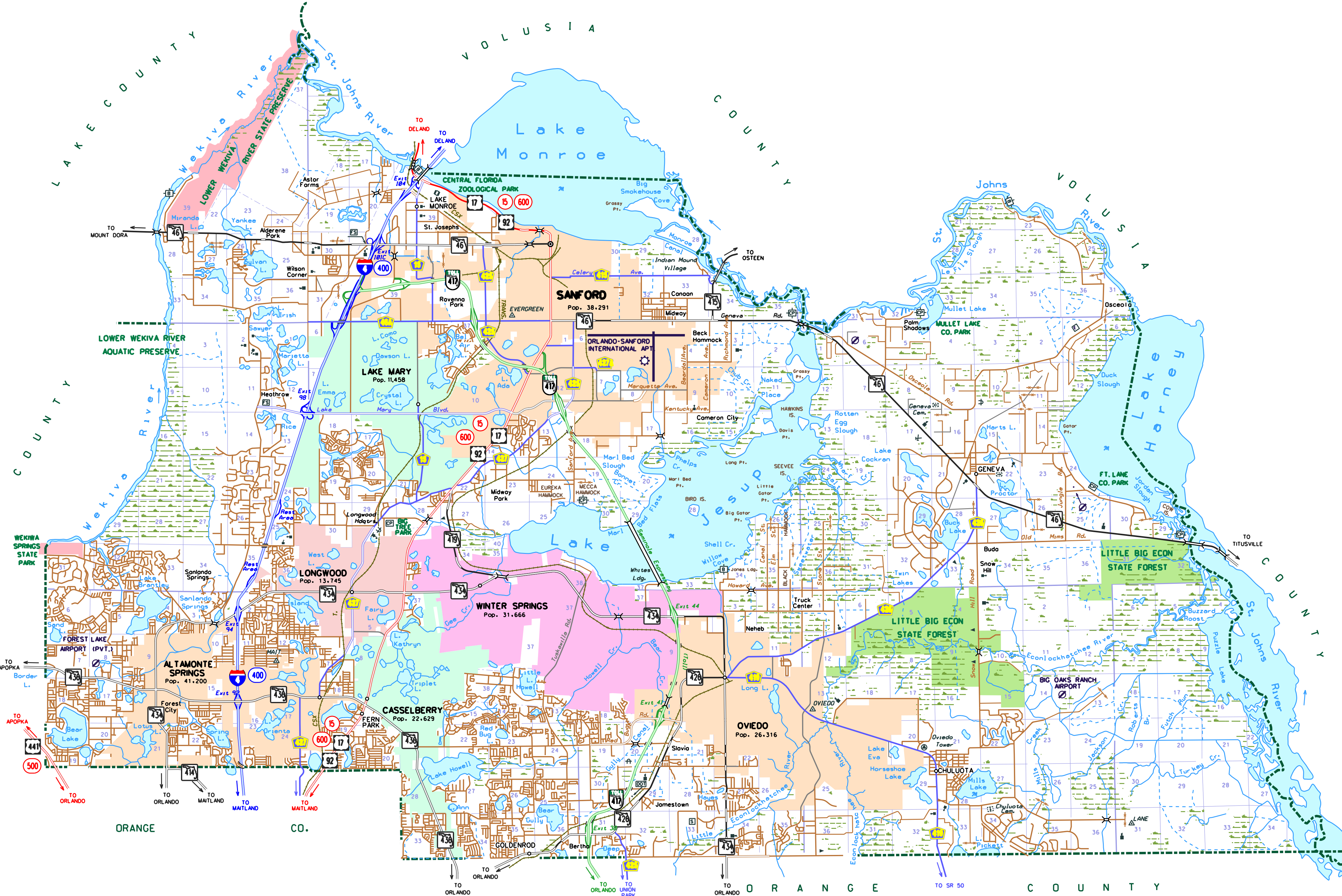


GENERAL LEGEND

- INTERSTATE HIGHWAY
- LIMITED ACCESS TOLL ROAD
- DIVIDED U.S. HIGHWAY
- DIVIDED STATE HIGHWAY
- DIVIDED COUNTY HIGHWAY
- LOCAL DIVIDED ROAD
- U.S. HIGHWAY
- STATE HIGHWAY
- COUNTY HIGHWAY
- LOCAL HARD SURFACE ROAD
- LOCAL IMPROVED SURFACE ROAD
- LOCAL UNIMPROVED SURFACE ROAD
- PRIVATE ROAD
- INTERSTATE ROUTE
- TOLL ROUTE
- U.S. ROUTE
- STATE ROUTE
- DIVISION OF PLANNING ROUTE DESIGNATION
- COUNTY ROUTE
- RAILROAD TRACK
- MULTIPLE RAILROAD TRACK
- RAILROAD STATION
- GRADE CROSSING
- RAILROAD BELOW
- LANDING AREA OR STRIP
- COMMERCIAL OR MUNICIPAL AIRPORT
- RUNWAYS
- CANAL OR DRAINAGE DITCH
- NARROW STREAM
- WIDE STREAM
- LAKE, RESERVOIR OR POND
- INTERMITTENT POND
- MARSH OR SWAMP
- HIGHWAY BRIDGE
- HIGHWAY GRADE SEPARATION
- COUNTY BOUNDARY LINE
- CIVIL TOWNSHIP BOUNDARY
- LAND GRANT LINE
- SECTION LINE
- STATE FOREST
- PARK OR RECREATIONAL AREA
- INCORPORATED AREAS
- COUNTY SEAT
- OTHER CITY OR VILLAGE
- WAYSIDE PARK OR SMALL PARK
- SMALL COUNTY PARK
- PARK WITH BOAT RAMP
- COUNTY PARK WITH BOAT RAMP
- BOAT RAMP
- RECREATIONAL AREA OR HISTORIC SITE
- SCENIC SITE
- POST OFFICE
- SCHOOL
- CHURCH
- CEMETERY
- CHURCH WITH CEMETERY
- TOLL HOUSE OR WEIGHT STATION
- MINE OR QUARRY
- FIRE CONTROL HEADQUARTERS
- LOOKOUT TOWER
- FIRE STATION
- DEPARTMENT OF TRANSPORTATION FACILITY
- SOLID WASTE MANAGEMENT FACILITY
- POWER SUBSTATION
- COMMUNICATIONS FACILITY
- LOCKED GATE OR FENCE
- TRIANGULATION STATION
- LOCATION OF SYMBOL



This map was compiled from U. S. Geological Survey quadrangle maps, Florida Dept. of Transportation aerial photography completed Dec., 2002, General Land Office plans, road inventory surveys completed Jan., 2004 and other available map data.

This map was compiled using interactive computer graphic methodologies.

This map was prepared on the Transverse Mercator projection, 1983 North American Datum, Florida system of coordinates, East Zone.

The railroad stations on this map do not necessarily denote the presence of a depot or like facility. It may be only a point, such as a platform or siding, designated for the receipt or delivery of freight.

No attempt has been made to show all drainage canals or ditches.

All populations are taken from the 2000 United States census. In 2000 the population of Seminole County was 365,196. There are 321 square miles in the county.

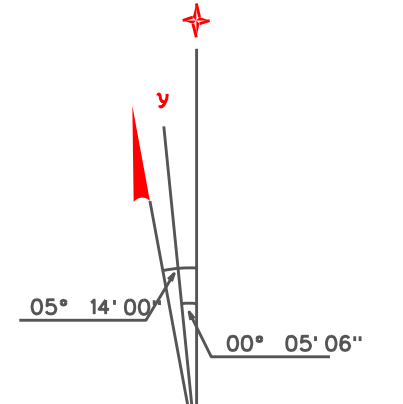
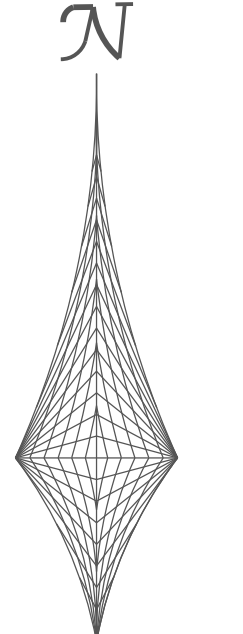
No claim is made for the basic cartographic source material taken from a work or works of the United States Government.

Due to the scale of this map, the Florida Department of Transportation assumes no responsibility for inaccuracies in road alignments, configurations of intersections or other related data.

Corporate boundaries are determined using all available descriptions at the date of revision. The Florida Department of Transportation Surveying and Mapping Office is not responsible for inaccuracies resulting from unknown or unobtainable information.

Maps of this series are in the public domain. The maps are compiled and published using public tax monies and are copyrighted to prevent reproduction and resale for profit.

For the price and availability of this map, contact Mass and Publications, Florida Department of Transportation, Tallahassee, FL 32399-0450. Phone (850) 414-4050.



GRID NORTH AT TRIANGULATION STATION "OVIEDO" IS 00° 05' 06\"/>



GENERAL HIGHWAY MAP
SEMINOLE COUNTY
FLORIDA

PREPARED BY THE
SURVEYING AND MAPPING OFFICE
STATE OF FLORIDA
DEPARTMENT OF TRANSPORTATION
IN COOPERATION WITH THE
U.S. DEPARTMENT OF TRANSPORTATION
FEDERAL HIGHWAY ADMINISTRATION

MARCH, 2004
COPYRIGHT FLORIDA DEPARTMENT OF TRANSPORTATION 2004

| REVISIONS | |
|------------------------|-------------|
| FEATURES | DATE |
| State Maintained Roads | March, 2004 |
| SR. 46 | June, 2010 |
| | |
| | |

