

# FDOT CADD Office Updates – July 2022 Q&A

**Q: Can we get a copy of these questions and answers?**

A: Yes. Here it is!

**Q: For companies still working in 10.09 and slowly transitioning to 10.10, can 10.09 files be opened and worked on in 10.10? We're at Phase IV for some of our 10.09 projects and are afraid of losing data by making the late transition.**

A: There are no known risks in moving to 10.10. We recommend upgrading to the latest version on ORD projects. Opening in 10.10 will convert the files to 10.10 versions.

**Q: Does Plan Set Manager work with ProjectWise?**

A: As always, FDOT's default response is we do not support ProjectWise. But, it will work in single or bulk mode as long as the files are local (or located in PW Drive).

**Q: For automated quantities, we've been running into an issue with station and quantity accuracy. Civil AccuDraw stationing does not match station limits provided by the EQ report. Typically, the values are off by a few hundredths.**

A: This will depend on the element type being measured, we've updated some of the measurements in the latest release.

**Q: Do the summary tables typically populate line items at random? We have a number of alignments for a particular project and each line item varies. Is there a way to get them to populate in groups of the same alignment versus randomly populating?**

A: What version of the software are you using? Pretty sure that was addressed in the previous release.

**Q: Will pay item and pay Item descriptions populate for additional summary table pages? For instance, we have 300 pages of a cleaning and sealing joints pay item and the first summary table will be the only one with the pay item and pay item description. Previously, if we had a run over table, those pay items/descriptions would show as such with (CONTINUED)**

A: Because of the limitations of the applications, the fact that the EQ Report is a continuous scrolling and searchable PDF, and the fact that pay items should never be repeated within the same summary table, the preference to repeat the pay item and description at the top of each page is no longer allowed. The Summary Reports Builder is NOT a print to PDF, and because it extracts the data from the Excel files and formats it based on the PDF requirements, it is not possible to determine where the page breaks will occur, and in keeping with the BOE requirement to not modify the outputs of the CADD software, it is NOT recommended to go through the extra effort of manually trying to locate where the page breaks would occur and force the continued labels into the Excel file. This should be documented in the BOE in the near future.

**Q: For automated quantities based on shapes (no 3D model), is there an easy way to identify a particular shape or group's quantity (i.e. milling, superpave, etc)? A pay item and thickness were assigned but the only way to get a tonnage for instance was to run the takeoff manager and get the spreadsheet output each time.**

A: The 2D shapes' properties only display the area in the element properties and the tonnage is not determined until the Quantity Takeoff Manger combines the area and thickness values with a formula retrieved from FDOTConnect resource files for calculation.

**Q: From a reviewing standpoint, when the quantities are outputted to the summary tables, it's difficult to take a sum of all the line items, especially when you have 5+ sheets, since each cell is a text and not a number. Any suggestions to backchecking these sums?**

A: The summary tables will no longer be split into multiple worksheets, so this should be much less of an issue going forward.

**Q: Can I save the file in a lower version?**

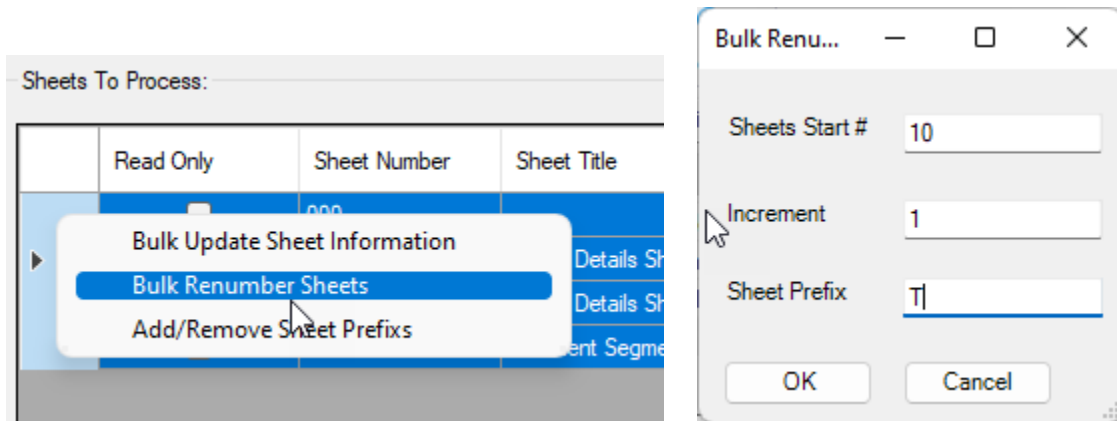
A: Under the File backstage area you can use the "Civil Tools" to downgrade a file, note as you will be warned, you may lose data.

**Q: Is the plan set manager locked into the sheet model only?**

A: Yes, it will only work on sheet models

**Q: Does the plan set manager allow for easy renumbering similar to the other product in SS10 that we will not name?**

A: Yes. Right click the sheet(s) you would like to renumber and select "Bulk Renumber Sheets", fill out the starting sheet number, the increment value, and a sheet prefix (if desired).



**Q: What about Lighting quantities (Poles/PullBoxes) are working on 10.10?**

A: Lighting tools are being developed/expanded. Expect to see more robust options in the October maintenance release.

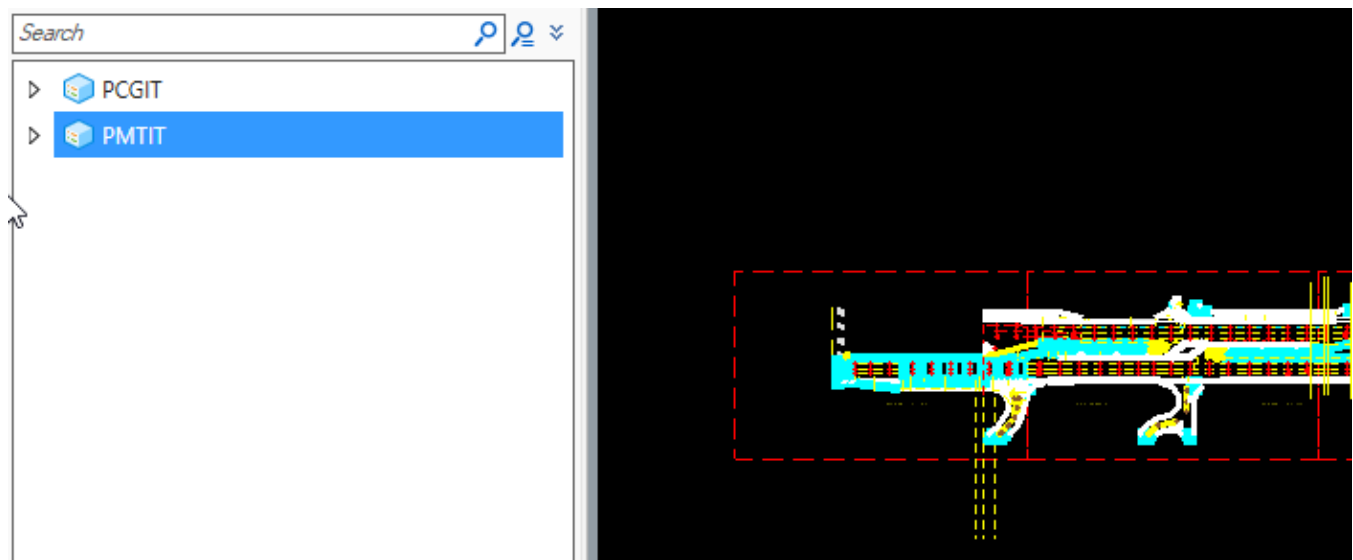
**Q: Will the plan sheet manager work with plan sheets created using the previous 10.10 version?**

A: PlanSet Manager will only be able to mine the sheet number from pre-July FDOT software. You would just need to replace the border (or re-sheet sheets using the new Sheet Seeds).

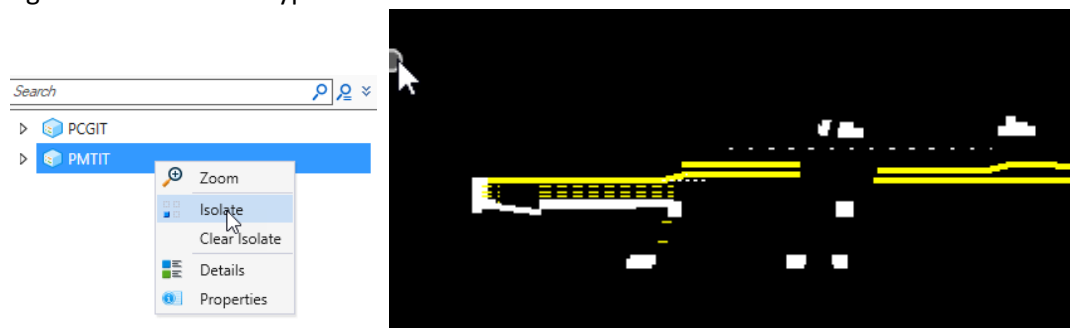
**Q: Is there a way that quantity related pay items be highlighted in any way?? we need that tool to back check quantities**

A: The best way to highlight and isolate quantity shapes is to use the Explorer > Items tool. Refer to the Automated Quantities training guide, Chapter 2 starting on page 2-22 or the related video for Chapters 1 & 2, starting around the 47:35 mark. The slowdown issues seen in previous versions of ORD seem to be resolved with more recent releases and the Explorer is one of the best review/troubleshooting tools.

Using the “Items” tab in Explorer you will see the itemtypes listed that are available to view. Just clicking on the itemtype will highlight those items with that itemtype



You can right click on the itemtype and select “Isolate” to turn off all elements that do not have that itemtype



applied.

Select “Clear Isolate” to turn everything back on.

You can use the Search method to isolate down to specific payitems within the itemtypes

**Q: Asphalt quantities should work for 2D since RRR projects are not being paid to be designed?**

A: It is able to be calculated with 2D shapes, you just cannot get a tonnage value without running the computation/summary table.

**Q: Do we need to install MR1 before MR2?**

A: No. MR2 is a cumulative maintenance release. Please uninstall any previous version of FDOTConnect10.10 before installing MR2.

**Q: Any plans to add guide signs through the sign tool?**

A: There is a workflow for placing signs from GuideSign shown in the Traffic Tools training guide.

**Q: Previously we have had issues with automated marking quantities where elements perpendicular to the alignment where the station does not recognize. Has this been fixed or been an issue for anyone?**

A: This issue should be resolved in MR2, This is a bug in the actual Bentley programming interface, we have been able to work around many of these issues with the latest release but still may appear sometimes.

**Q: For ongoing SS10 Projects that may take a year to be completed, are there specific compatibility concerns now that it is no longer supported?**

A: The CADD Office has sunset our FDOTSS10 software and is no longer updating the FDOTSS10 resources. One concern is that you will not have the most up to date pay-items and other up-to-date resources. We are currently addressing SS10 projects on a case-by-case basis, potentially recommending upgrading to FDOTConnect10.10 for the completion of a project.

**Q: Will the plan set manager place digital delivery note on the side of the sheets?**

A: Yes, it is dependent on the Professional of Record property selected.

**Q: Is the Traffic Tool Hotfix included in MR2?**

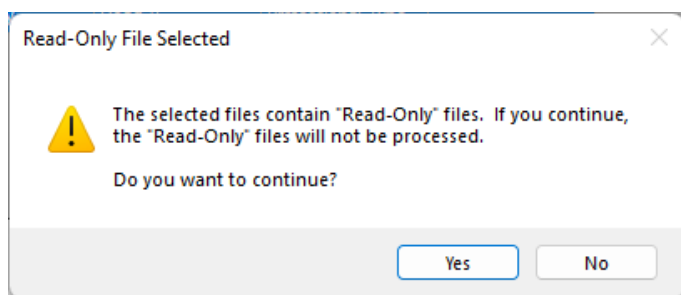
A: Yes. The latest MR contains all previous hotfixes.

**Q: in the multi sheet border editor, if the batch process encounters a open/locked file, what will the batch process do?**

A: The locked will show in a red color and the "Read Only" checkbox will be shown in the grid. The file cannot be modified so you will be warned that the file will be skipped if you attempt to modify it.

Sheets To Process:

	Read Only	Sheet Number	Sheet Title	Professional Name	FPID	Middle Cour
	<input type="checkbox"/>	000		Professional Name	Project ID	Middle Cty
	<input checked="" type="checkbox"/>	500	Sheet Title	Joe Engineer	666-111-999	Gulf
	<input checked="" type="checkbox"/>	530	New Sheet Title ...	Jane Surveyor	666-111-999	Gulf
	<input checked="" type="checkbox"/>	000		Professional Name	XXXXXX-X-XX-XX	
	<input type="checkbox"/>	510	Bridge Details Sh...	Bob Builder	666-111-999	Gulf
	<input type="checkbox"/>	520	Bridge Details Sh...	Bob Builder	666-111-999	Gulf
	<input type="checkbox"/>	000	Abutment Segme...	Professional Name	Project ID	Middle Cty



**Q: How many rows can the Quantity Takeoff Manager use now?**

A: The Quantity Takeoff Manager now writes to Sheet1 and will create an unlimited number of rows. The new Excel sheets will not work with previous versions of FDOTConnect, but all older Excel files will still work with the updated 10.10.02.00 version.

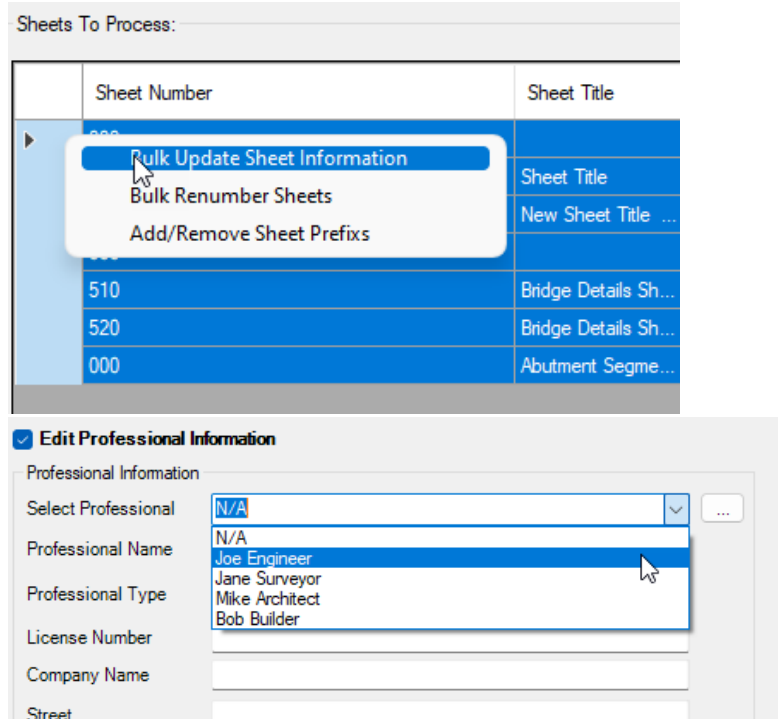
**Q: Is FDOT connect 10.10 already certified for use with Windows 11 or will it be certified soon?**

A: FDOTConnect10.10 is not yet officially certified for use with Windows 11, however we have a number of people in the office that are testing it on Windows 11. If you choose to move forward to Windows 11, please keep us posted on any issues that you encounter.

**Q: Do I still need to add the EOR (the first time) to each sheet individually, or can I use the new tool to add the EOR?**

A: The new tool will allow you to update any of the sheet information in bulk format with a single step.

Select all the sheets you would like to set the EOR. Right click on the grid and select “Bulk Update Sheet Information”, enable the checkbox “Edit Professional Information”, select the Engineer, and press OK.



**Q: Does the New Sheet Manger Tool replace the need to use the Sheet Index to create a PSET?**

A: PlanSet Manager is in no way tied to PSET though it will read sheetnumbers that are set using PlanSet Manager.

You can create PSETs from within Plan Set Manager by pressing the “Create “Set” button, it will use either the FDOT Black and White or Color pdf driver depending on the option selected in the “Print Color Options” area. Once the PSet is created, the PSet can opened in Print Organizer and be modified to use any drivers options that are available with any other PSet. You can also generate pdf files straight from within Plan Set Manager using the “Plot Sheets” button.

**Q: Sometimes in Structures we need two lines for the sheet name as well as the Project name is that an option?**

A: The solution with older borders was to add spaces into those fields to force a wrap, that will still work with this release. If that needs to be addressed please let us know.