

*State of Florida*  
*Department of Transportation*



**FDOT Connect2023**  
**Installation Guide**

SEPTEMBER 2023

**PLEASE READ THIS ENTIRE DOCUMENT PRIOR TO INSTALLATION.**

**THIS GUIDE CONTAINS CRITICAL INFORMATION ON SOFTWARE VERSIONS  
AND ADDITIONAL CONFIGURATION STEPS NECESSARY FOR  
A SUCCESSFUL INSTALLATION OF THE FDOT SOFTWARE.**

**NOTE: AFTER INSTALLING BENTLEY CONNECT EDITION APPLICATIONS, DO NOT LAUNCH THE  
APPLICATION UNTIL YOU HAVE INSTALLED THE FDOTCONNECT2023 SOFTWARE FIRST**

**FAILING TO FOLLOW THE STEP BY STEP INSTRUCTIONS OUTLINED IN THIS GUIDE WILL NECESSITATE  
UNINSTALLING AND REINSTALLING THE SOFTWARE.**

PRODUCTION SUPPORT CADD OFFICE

TALLAHASSEE, FLORIDA

<http://www.fdot.gov/cadd/>

# Table of Contents

## Introduction to FDOTConnect2023 and Quick Start Guide

Workstation Only Install for Standalone Workstation .....	3
Client / Server Install for FDOTConnect2023 .....	3
A Note About Side-By-Side Installations .....	Error! Bookmark not defined.

## Installing FDOTConnect2023

Installing Bentley OpenRoads Designer CE .....	4
Installing FDOTConnect2023 Workstation – <i>Standalone Workstation</i> .....	6
Installing FDOTConnect2023 Server Installation – <i>CLIENT / SERVER Install</i> .....	8
Installing FDOT Connect Client – <i>CLIENT / SERVER Install</i> .....	10

## Launching FDOTConnect2023 and Troubleshooting

Launching FDOTConnect2023 for OpenRoads Designer .....	13
Troubleshooting .....	Error! Bookmark not defined.

***Please see “Supported Software Versions” on the FDOTCADD Website for information regarding software version and certified platforms.***

**[Current Supported Versions \(fdot.gov\)](http://fdot.gov)**

# Installation Quick Guide

FDOTConnect2023 is certified for use with Bentley Connect Edition applications of the 2023 schema. For specific certified version numbers, please see the FDOTConnect2023 section of the “Supported Software Versions” of the CADD Office Website: [Current Supported Versions \(fdot.gov\)](https://www.fdot.gov/cadd-office-website/current-supported-versions)

Note: This installation guide describes the steps for installing FDOTConnect2023 for OpenRoads Designer. *The steps to install FDOTConnect2023 for Microstation Connect Edition or OpenBridge Modeler are essentially the same.*

Through selecting the default installation options, FDOTConnect2023 can be installed as a side-by-side installation, co-existing with previous versions of FDOTConnect and the Bentley software.

## Workstation Only Install for Standalone Workstation

For a standalone workstation installation of the FDOTConnect2023 workspace for use with Bentley Connect Edition software such as OpenRoads Designer Connect Edition and Microstation Connect Edition:

1. First, install Bentley OpenRoads Designer
  - a. We recommend right-clicking the installer and selecting “**Run As Administrator.**”
  - b. Select the defaults when installing OpenRoads Designer.
2. Second, install FDOTConnect2023
  - a. A typical workstation installation location would be “C:\FDOTConnect2023\”
  - b. Launch “Workspace Doctor” from the FDOTConnect2023 desktop folder. Select the “Configure” button.
  - c. Restart your machine before launching FDOTConnect2023
  - d. Select “Custom Configurations from the OpenRoads backstage and the FDOT workspace from the OpenRoads Designer workspace selection dropdown before creating a project.
3. See the rest of this installation guide for full installation instructions.

## Client / Server Install for FDOTConnect2023

To install the FDOTConnect2023 workspace for use with Bentley OpenRoads Designer Connect Edition and other Connect Edition software such as Microstation Connect Edition:

1. First, install FDOTConnect2023 Server Only Install on your CADD server and take note of the location in which you have installed it, bearing in mind that it can co-exist side-by-side with an existing installation of previous versions of the FDOTConnect software if installed in a separate location.
2. Second, install Bentley OpenRoads Designer on the client machine
  - a. Be sure to right-click on the installation .EXE and select “**Run As Administrator.**”
  - b. Take the defaults when installing OpenRoads Designer
3. Second, install FDOTConnect2023 Client Only Install on the client machine
  - a. The typical local client installation location for a Client Only Install is C:\FDOTConnect2023\.

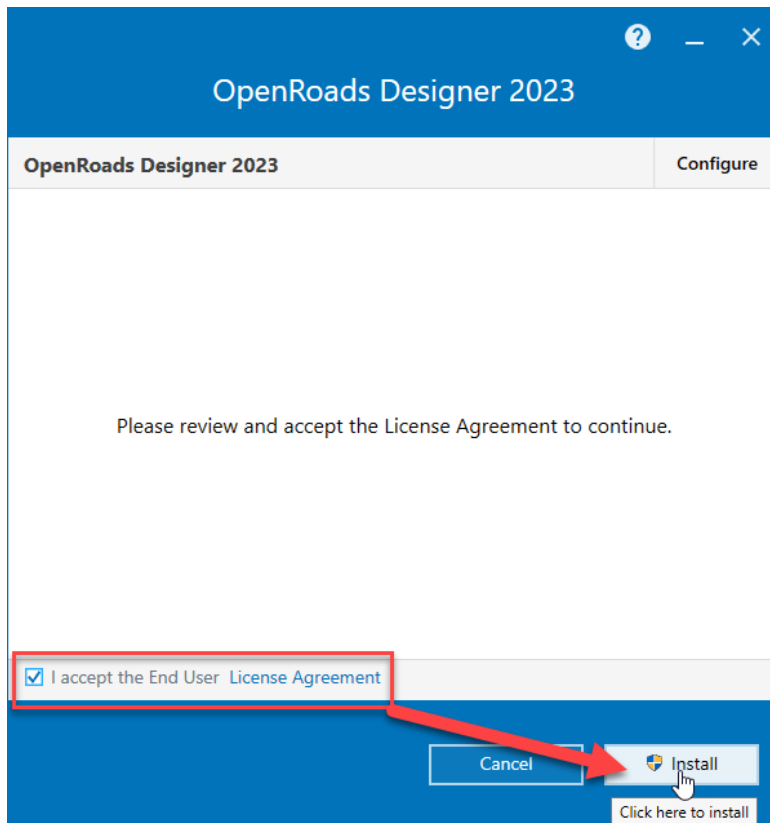
- b. Launch “Workspace Doctor” from the FDOTConnect2023 desktop folder. Select the “Configure” button.
- c. After installing the FDOTConnect2023 Client Only Install, restart the machine and launch FDOTConnect2023 from the icon in the FDOTConnect2023 desktop folder.
- d. Select “Custom Configurations from the OpenRoads backstage and the FDOT workspace from the OpenRoads Designer workspace selection dropdown before creating a project.

**Do not install FDOTConnect2023 Server on top of the same location as existing installations of previous FDOTConnect software.**

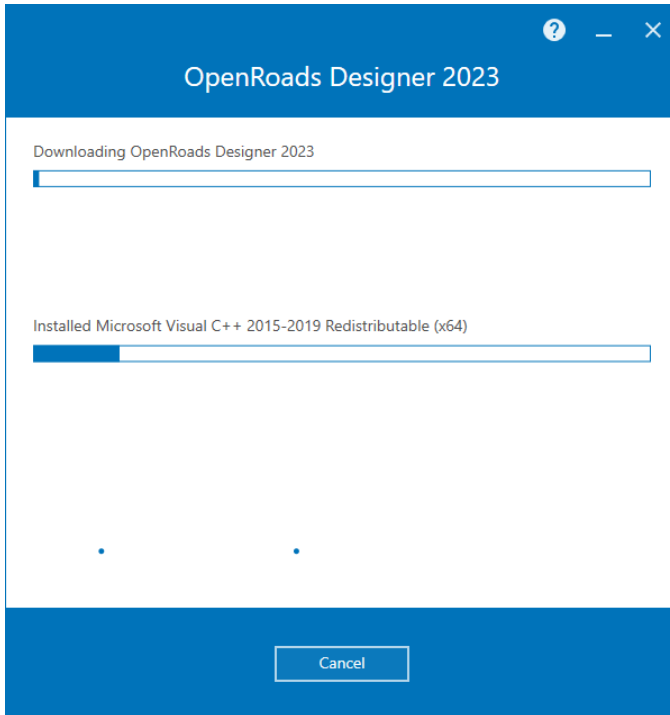
## Installing Bentley OpenRoads Designer CE

The first step to installing FDOTConnect2023 is to install OpenRoads Designer CE or other supported Bentley Connect Edition Applications before running the FDOTConnect2023 Install.

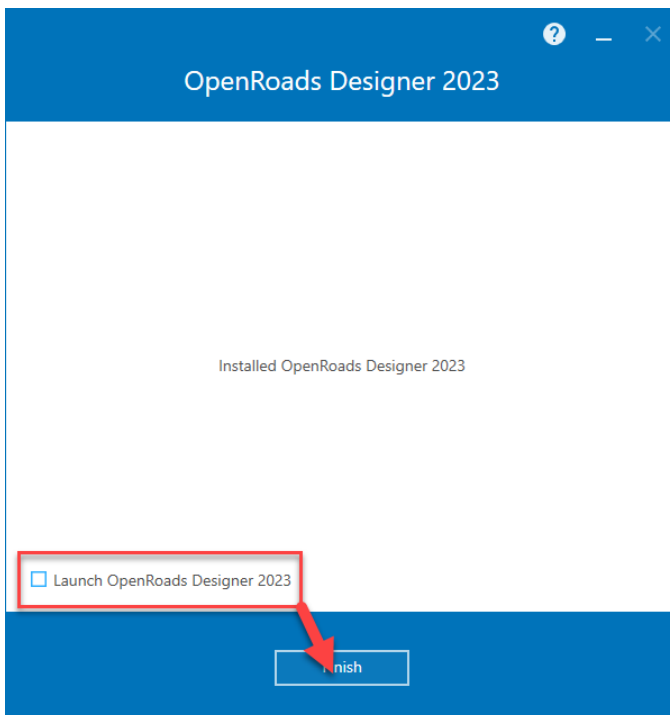
1. Launch the installer .EXE for Bentley OpenRoads Designer Connect Edition. Accept the License Agreement and select “Install” as shown below.



2. Wait patiently as OpenRoads Designer is installed.



3. Upon completion, be sure to **UNCHECK** "Launch OPenRoads Designer" before selecting "Finish." This is a critical step in proper installation and configuration of the FDOT software. Do not launch OpenRoads Designer before installing the FDOT software.



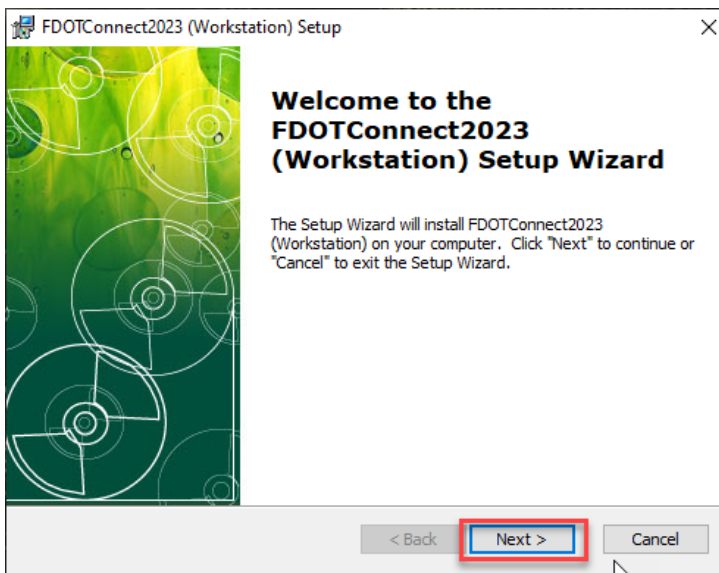
## Installing FDOTConnect2023 Workstation – Standalone Workstation

After installing Bentley OpenRoads Designer, you may now install FDOTConnect2023 Workstation Only Install. Typical FDOTConnect2023 Workstation installation location is: C:\FDOTConnect2023\

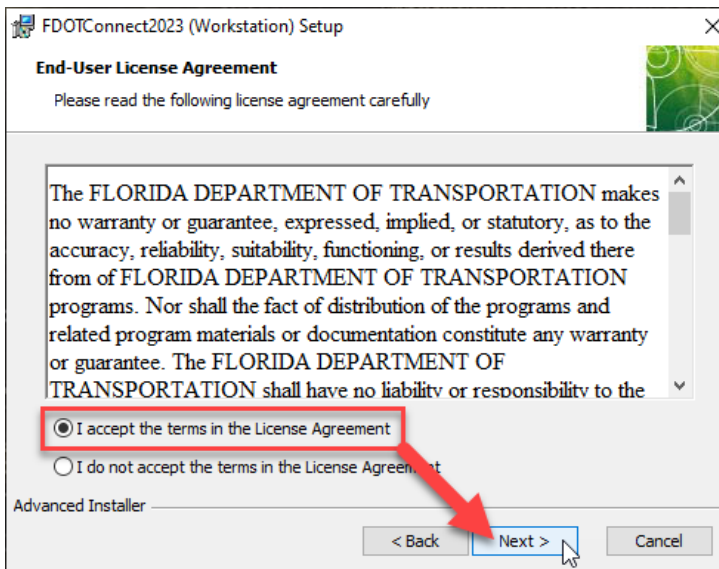
This location allows FDOTConnect2023 to co-exist with a side-by-side installation of FDOTConnect10.11 for 10.11 versions of the Bentley Connect Edition applications.

Double click FDOTConnectWorkstation2023.MSI to begin installation.

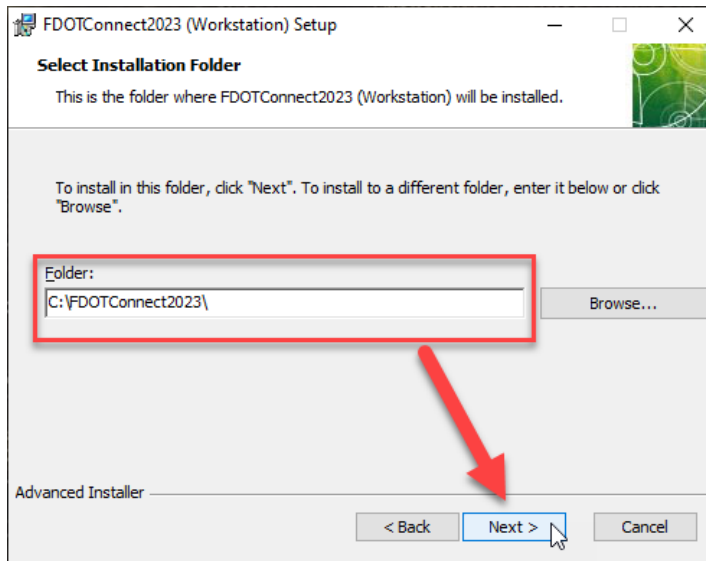
1. The first dialog of the installer appears. Select “NEXT.”



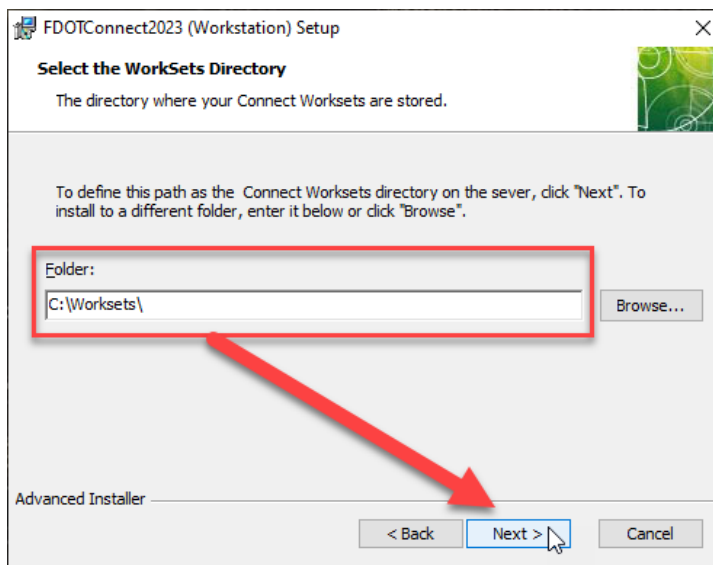
2. Accept the terms of the license agreement and select “NEXT.”



3. Confirm the installation location of the FDOTConnect2023 Workstation.



4. Confirm the location for your Worksets or Projects and select "NEXT."



**Note: While the Worksets folder can be set to a custom location such as a server, it is critical that the Worksets folder is NOT set to any location INSIDE the FDOTConnect2023 installation folder.**

5. Select "INSTALL" to complete the installation, and then restart the computer.

## Installing FDOTConnect2023 Server Installation – CLIENT / SERVER Install

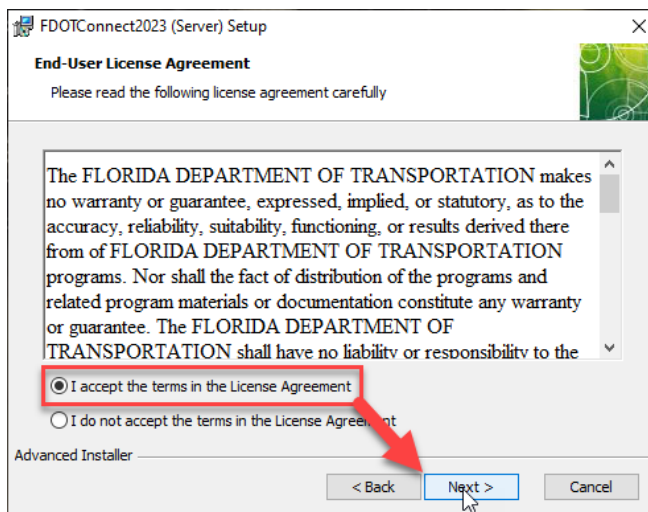
After installing OpenRoads Designer CE or other supported Bentley Connect Edition applications on client machines, the next step is to install the Server installation on your CADD server.

You can install the FDOTConnect2023 Server Only Install directly by logging into your server and installing it on the shared local hard drive or from a client machine, being sure to specify the desired location to install the Server Only Install.

1. Double-click the FDOTConnect2023 Server installation .MSI to launch the installation wizard.

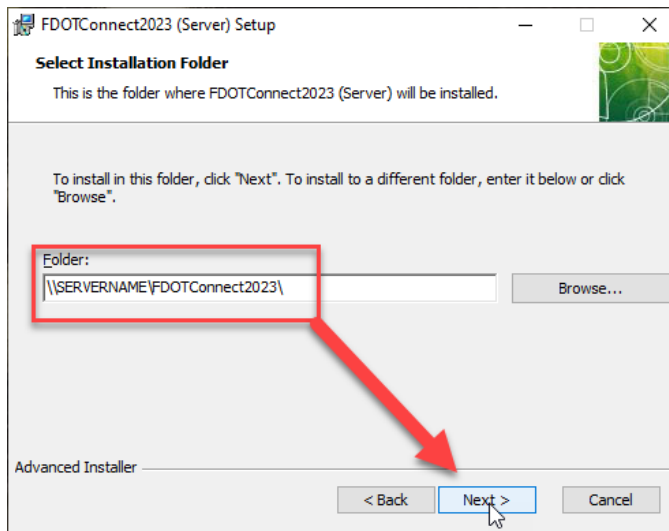


2. The FDOT Connect Server Setup dialog appears. Click "NEXT."



3. Accept the terms of the License Agreement and select "NEXT."





4. Specify the installation location on the Server. (In the above example, the installation is being performed on a server named "SERVERNAME").
5. Select "**NEXT.**"
6. Select "**INSTALL.**"
7. Wait patiently while FDOTConnect2023 Server is installed to your CADD Server.
8. When installation is complete, select "**FINISH**"

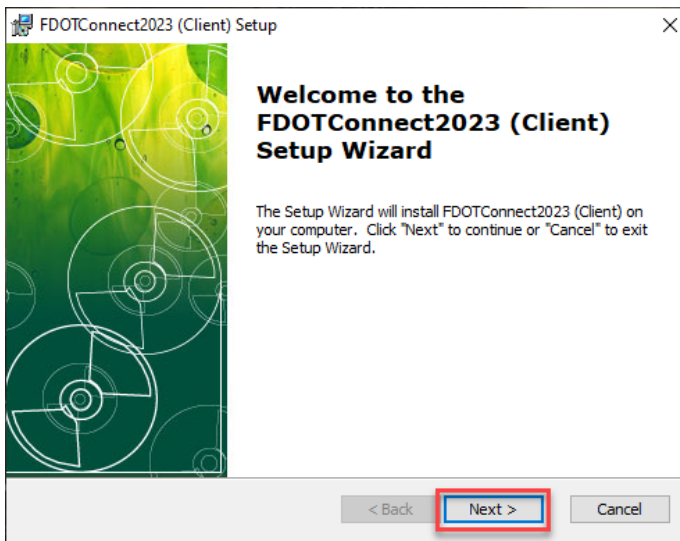
## Installing FDOT Connect Client – CLIENT / SERVER Install

After installing FDOTConnect2023 Server Only Install and Bentley OpenRoads Designer CE, you may now install FDOTConnect2023 Client. In the standard FDOT installation practices, FDOT Connect Client is installed to “C:\FDOTConnect2023\” on the client machine and is the default installation location specified by the installer.

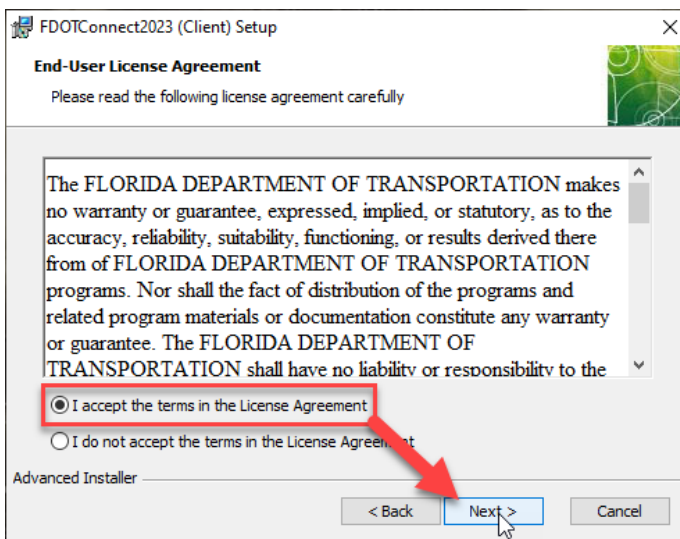
This location allows for side-by-side installation with existing FDOTConnect10.11 software.

Double click FDOTConnectClient2023.MSI to begin installation.

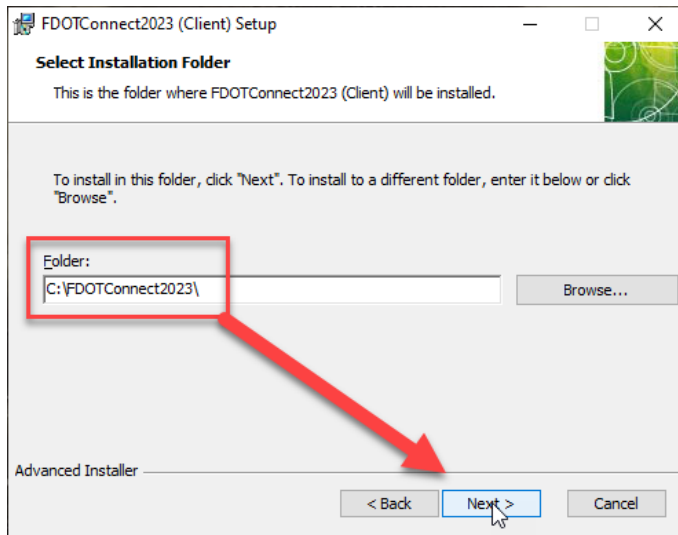
1. The first dialog of the installer appears. Select “NEXT.”



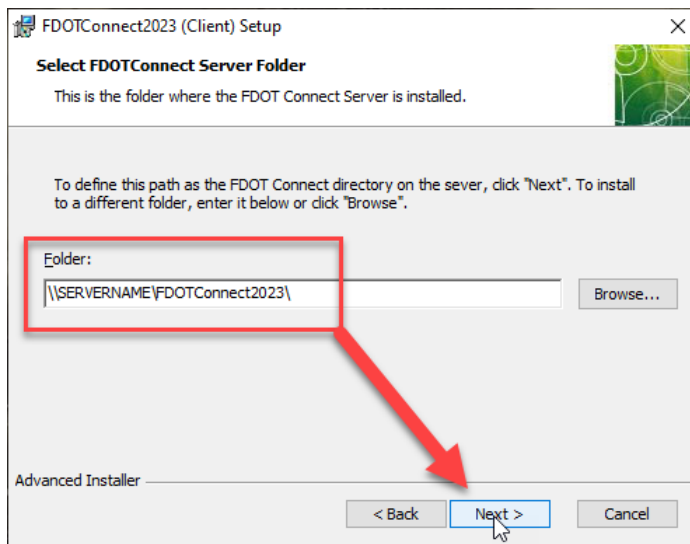
2. Accept the terms of the license agreement and select “NEXT.”



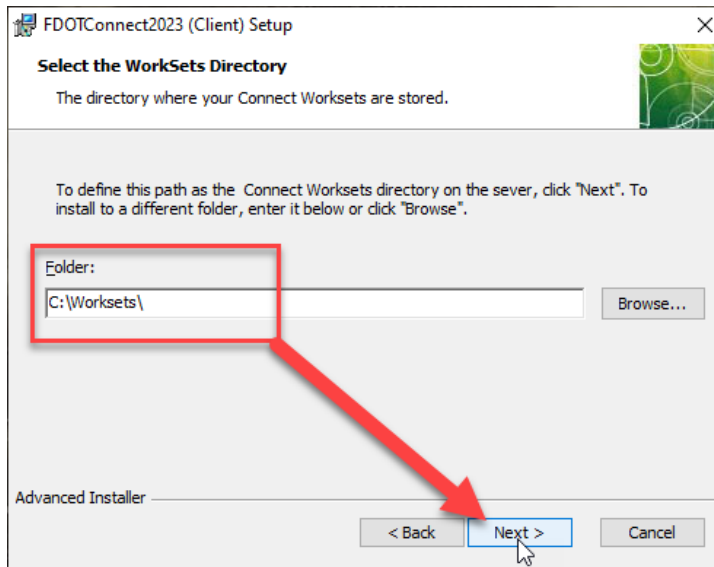
3. Confirm the installation location of the FDOTConnect2023 Client on the local client machine.



4. The dialog now prompts you for the location of the FDOTConnect2023 Server Installation. You can enter the Server location in the field or select the browse button to browse to the location of your FDOTConnect2023 Server installation. Click "NEXT" to continue.



6. Define the location for your Worksets or Projects and select “NEXT.”



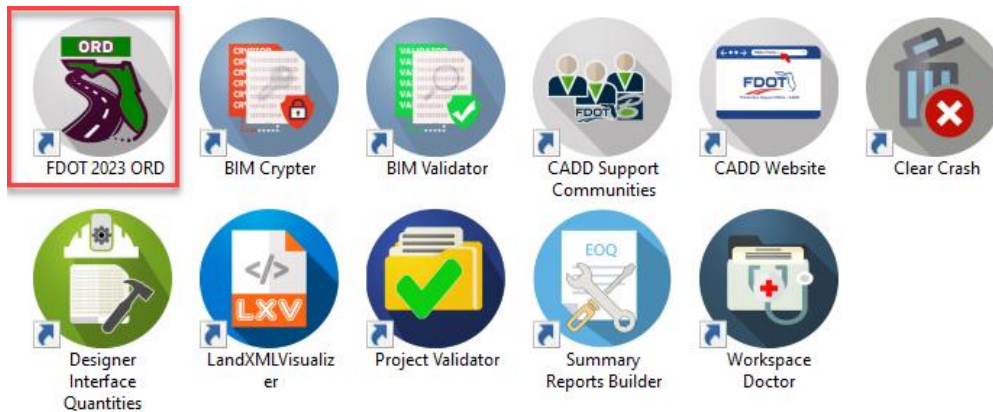
**Note:** While the Worksets folder can be set to a custom location such as a server, it is critical that the Worksets folder is NOT set to any location INSIDE the FDOTConnect2023 folder.

5. Select “INSTALL” to complete the installation.

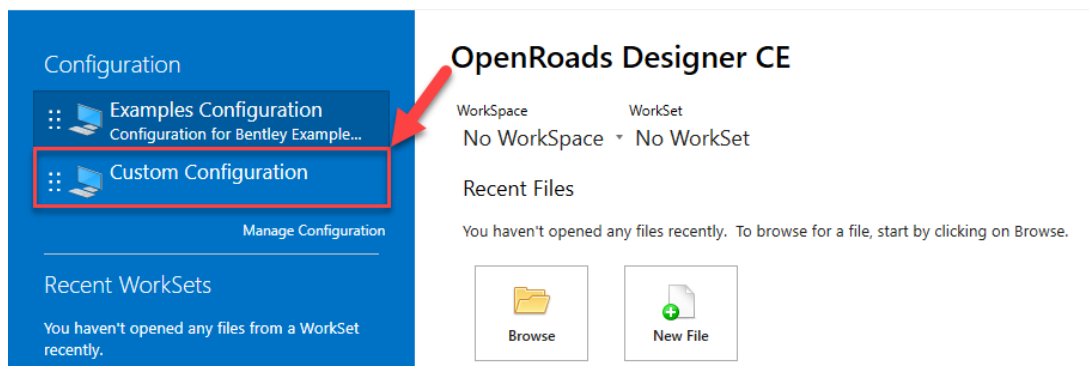
## Launching FDOTConnect2023 for OpenRoads Designer

To use FDOTConnect2023 and the FDOT workspace for OpenRoads Designer Connect Edition and other Bentley Connect Edition applications, it is critical to launch the application from the FDOT launch shortcuts in the FDOTConnect2023 desktop folder or the FDOT launch shortcuts on the desktop.

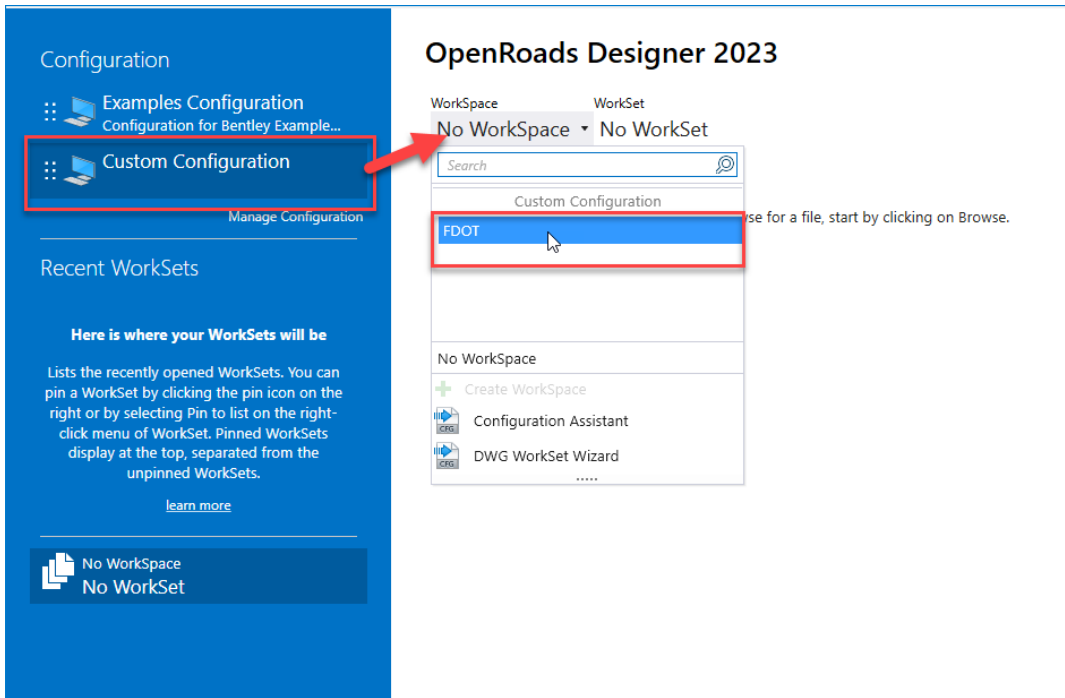
Launching OpenRoads from the default Bentley launch shortcut, or simply double-clicking a DGN file to launch OpenRoads Designer will NOT allow you to access all of the FDOT resources correctly.



1. Double-click the FDOT launch shortcut corresponding to the desired application. (e.g., “FDOT 2023 ORD” to launch OpenRoads Designer Connect Edition with FDOTConnect2023)

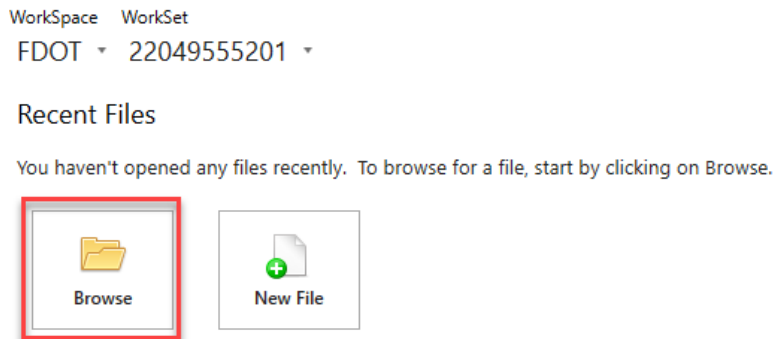


2. In the OpenRoads backstage, in the upper left, select “Custom Configuration” to access the custom configurations, including the FDOT workspace.



3. After selecting “Custom Configuration,” access the Workspace Selection Menu and select the FDOT workspace.

## OpenRoads Designer 2023



4. You can now select a Workset from the Workset Selection Menu, and browse for a file within that Workset.

**Note: No work should be done in the 0\_WORKSET\_TEMPLATE workset. This is the template from which all FDOT worksets are created. Also, no file should ever be opened while the 0\_WORKSET\_TEMPLATE is set as the active workset.**